

EXPAND EXAM RMS.

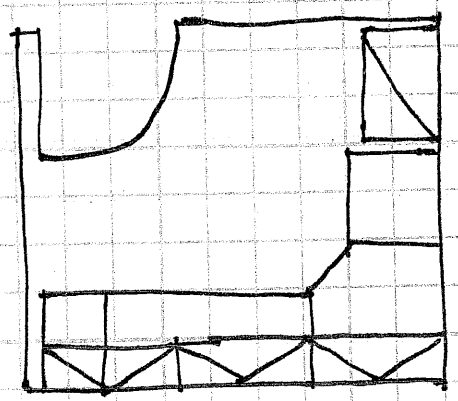
FURNITURE PLAN

SCALE: 3/8" = 1'-0"

A

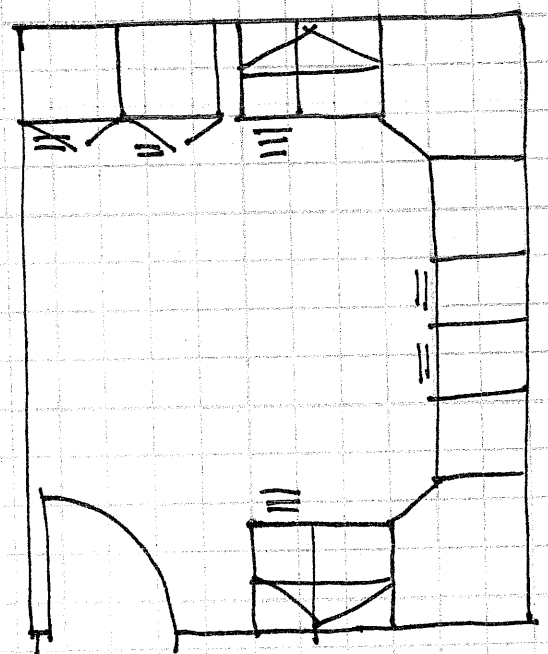
SERVING
ELEVATOR

DOWN



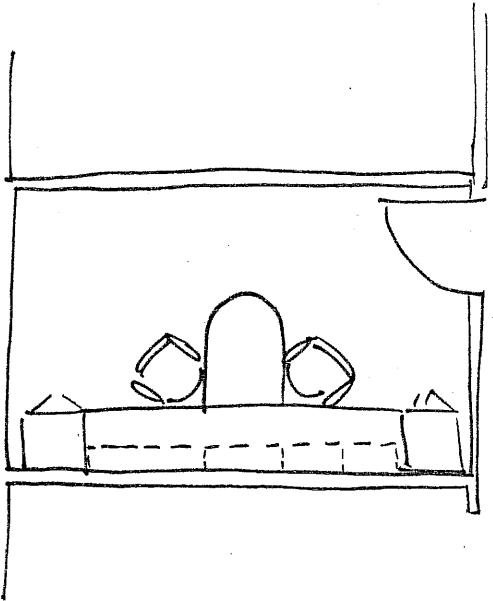
GR33A-14

WALL MOUNTED



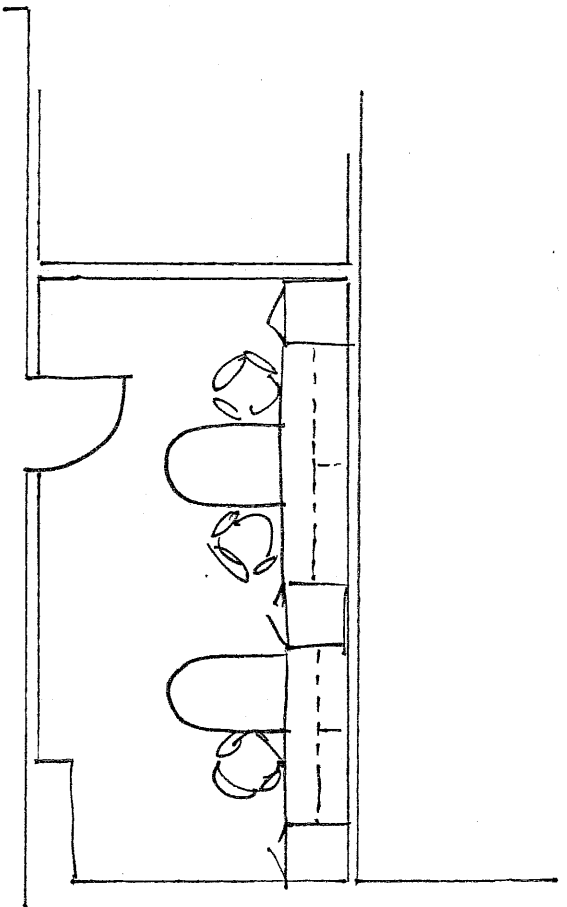
1A02-T.2

FREE STANDING

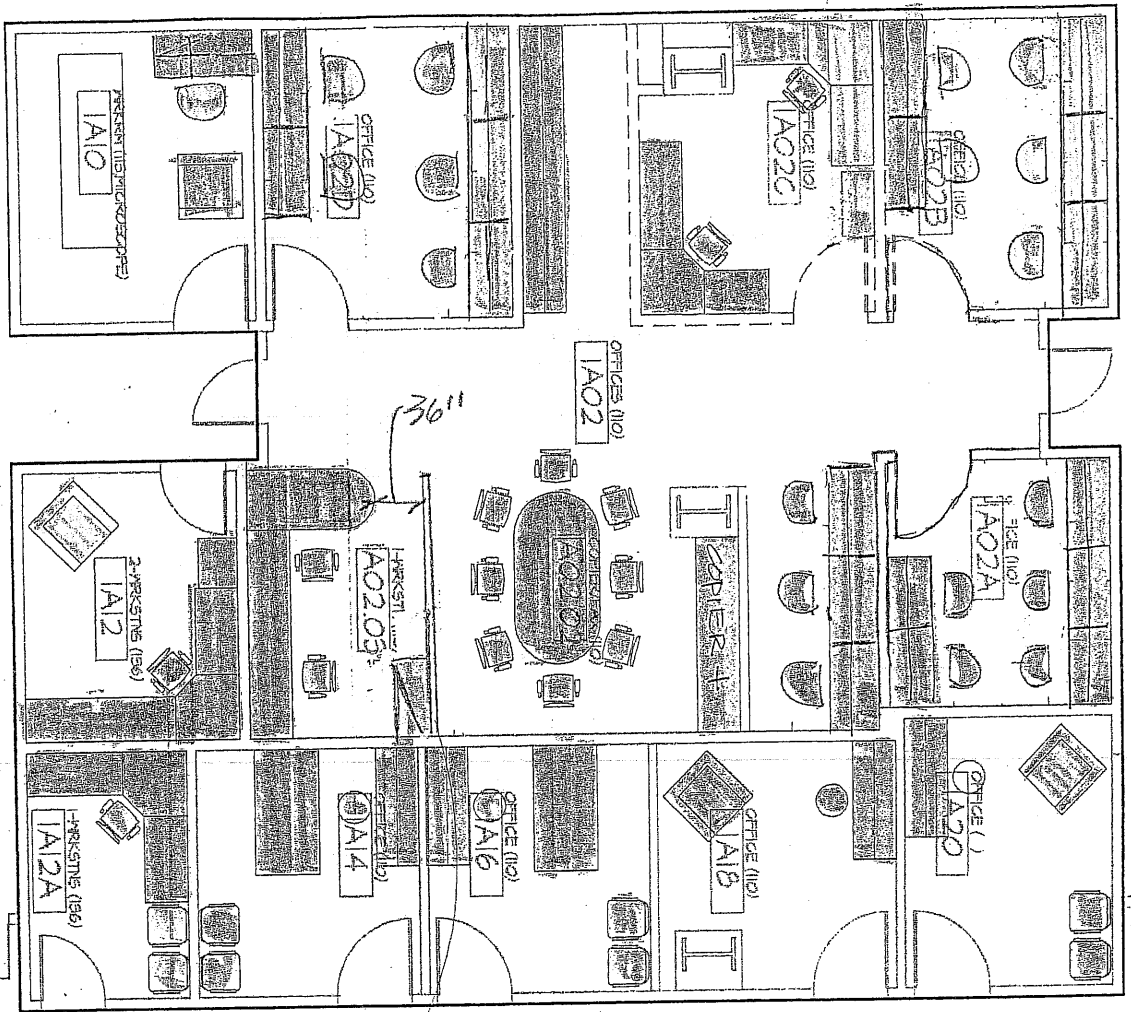


GA21-3
MENTAL
HEALTH

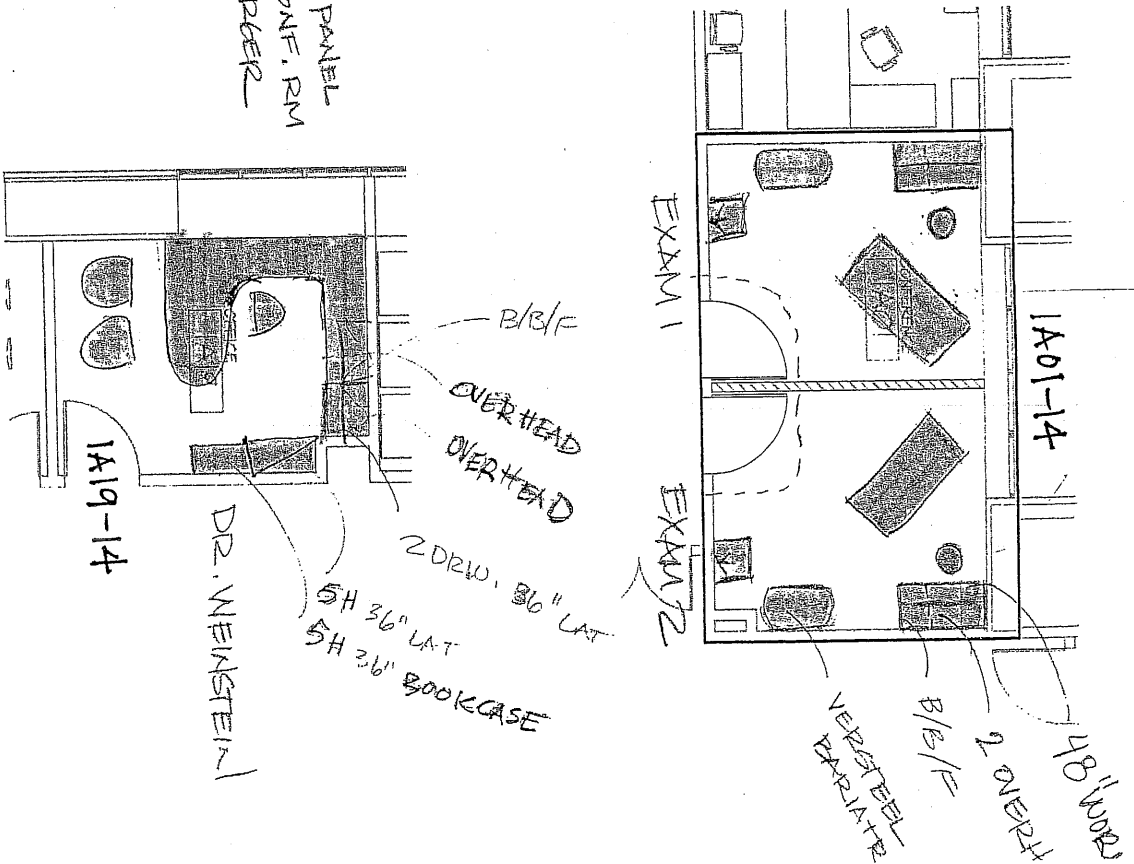
FURNITURE PLAN



GC02-3
MENTAL HEALTH



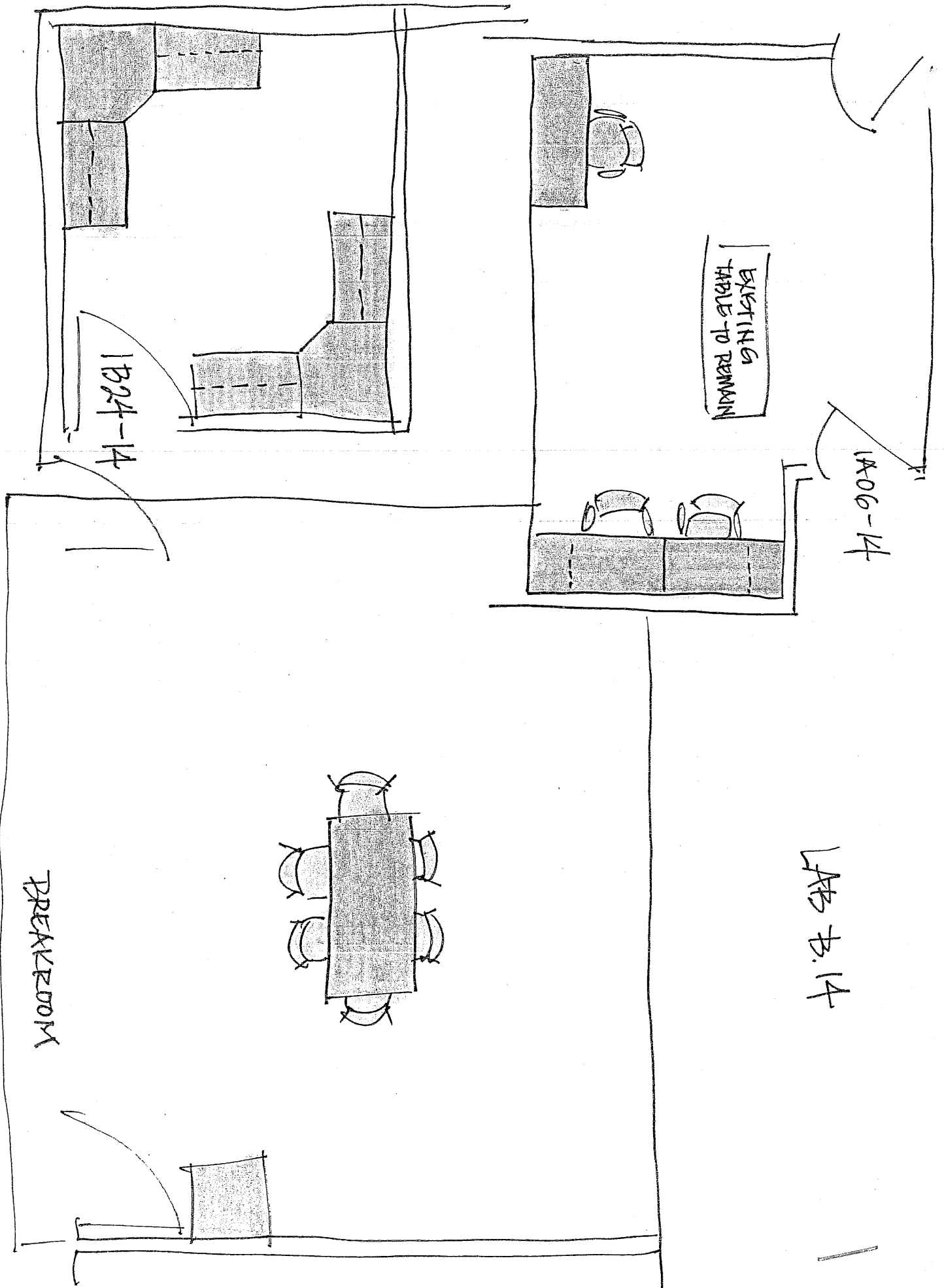
SLIDE PANEL
50 CONF. RM
IS LARGER

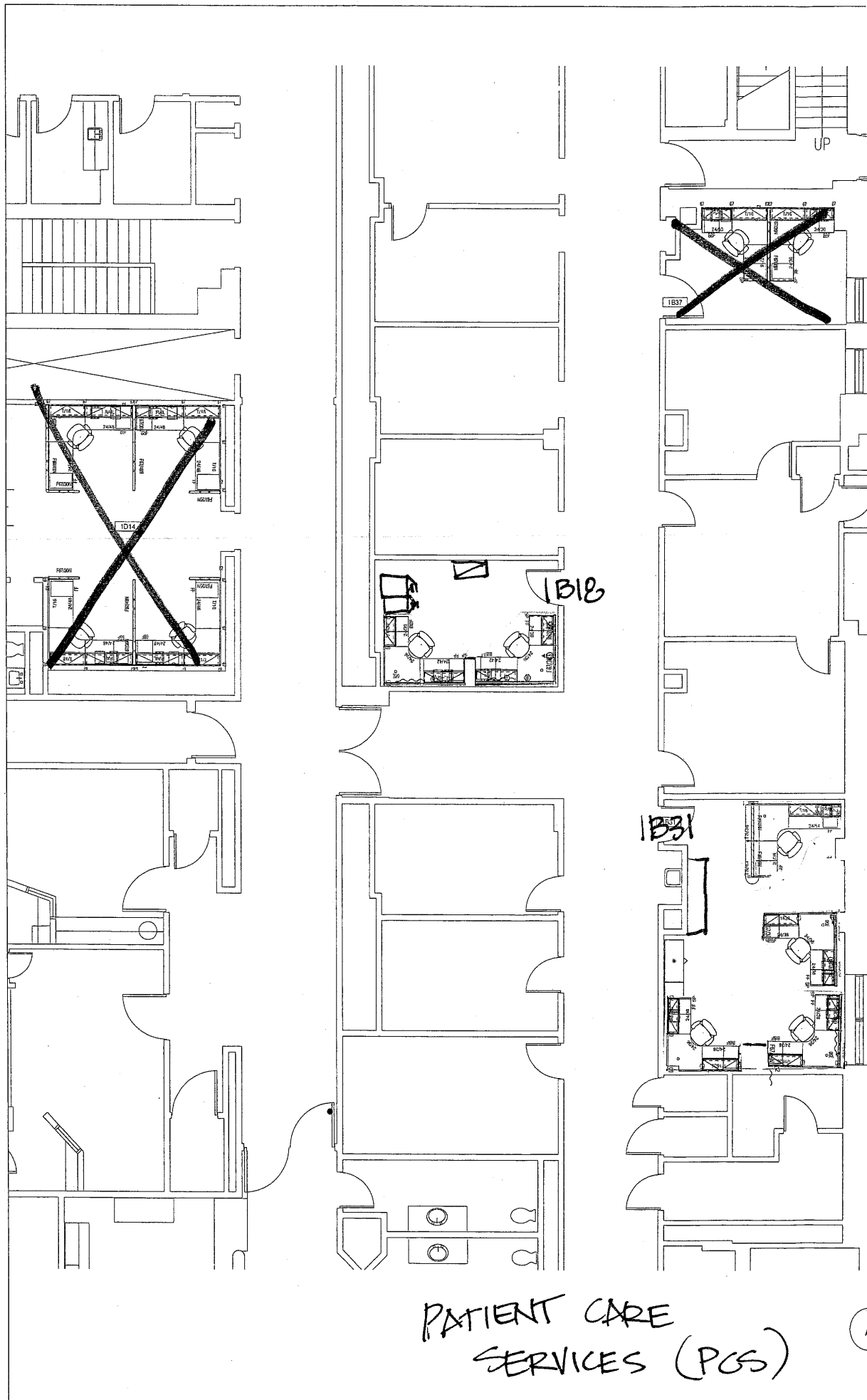


ACI - Holistic/Pain (~2661 sf)
Estimated Construction Cost
Estimated Furniture Cost
Estimated Construction Time

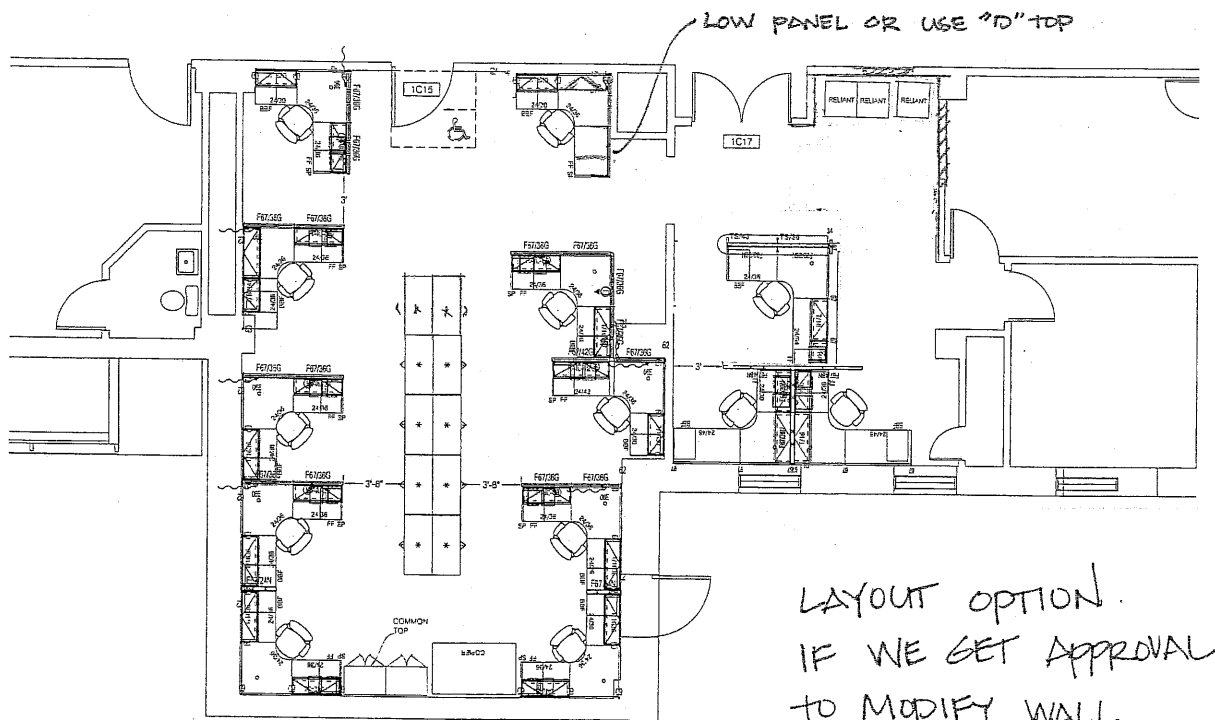
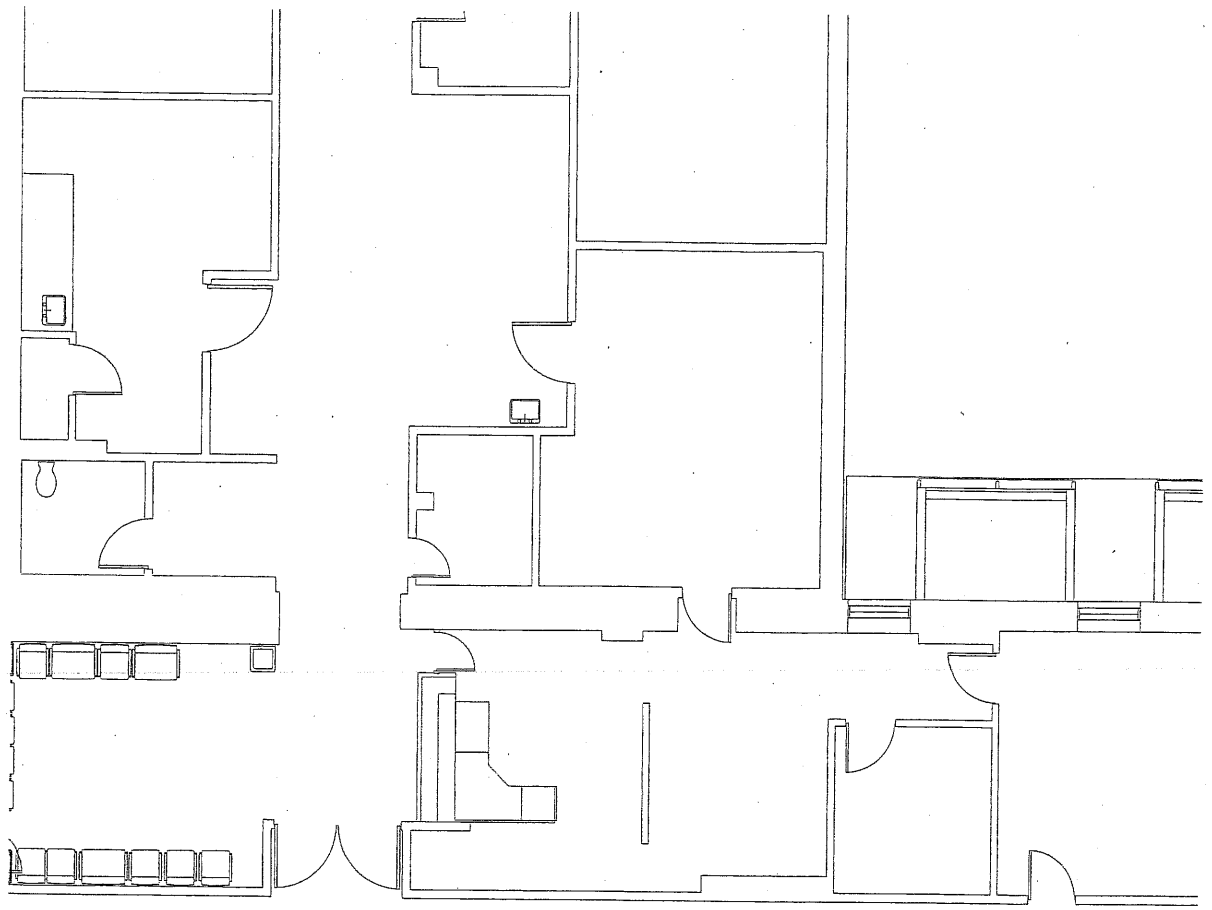
Holistic

R





B.1 1st floor

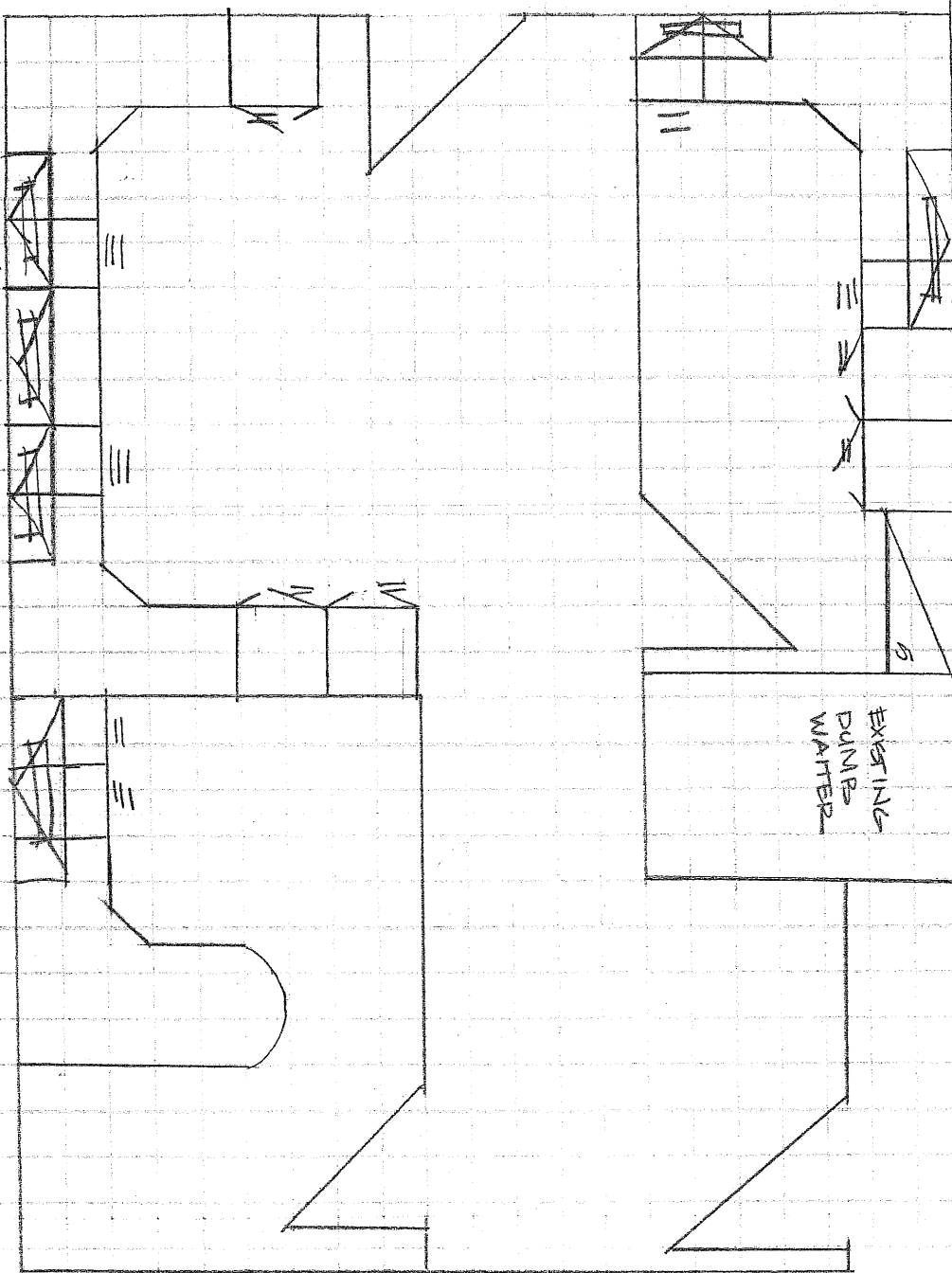


TURE PLAN
" = 1'-0"

PROSTHETICS IC15-1 + IC17-1

OPTION 1

RADIOLOGY 1D14B-1, 1D14C-1, 1D14D-1



Cambridge Sound Management Layout Notes

GENERAL NOTES:

1. The information contained in your layout is the recommended design by Cambridge Sound Management (CSM) Engineers.
2. CSM encourages that the layout is followed as close as possible to result in the most optimal sound masking installation and resulting production experience.
3. Any deviation from this layout is at the discretion of the installer and may result in less than ideal sound masking conditions.
4. All CSM control modules have auxiliary inputs to connect to audio sources such as paging or background music. Should your installation include auxiliary audio sources, please refer to the appropriate Installation & Operations Guide prior to installing the CSM QT control module.
5. Consider all Local Building Codes when installing the emitters and control module(s).
6. Each zone is differentiated by color in the "Sound Masking Key" on the layout. See a sample key diagram to the right.
7. The QT-300 and QT-600 control modules have network capability.
8. A System Drawings fee is included on the quote, which encompasses the layout placement, project revisions and wiring diagram. The Systems Drawings fee is only charged once the job is awarded. Wiring diagrams are typically provided after the Purchase Order is received, but can be provided in advance of award if warranted.

Sound Masking Key

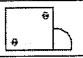
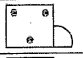
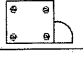
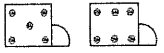
●	Open Office Area
●	Enclosed Office Area
●	Conference Area

LAYOUT NOTES

1. Cambridge Sound Management's corporate website includes several Installation & Operations guides, videos and installation checklists to assist you in the planning and completion of the physical installation of the sound masking solution. We recommend that all of our partners complete Cambridge Sound Management's Certification Program to ensure you have the training and knowledge to perform installation activities with the highest quality outcome.

- [Installation & Operations Guides](#)
- [QT System Layout Video](#)
- [CSM Certification Program](#)
- [Pre-Installation Checklist](#)
- [System Planning and Layout Guide](#)

LAYOUT GUIDELINES

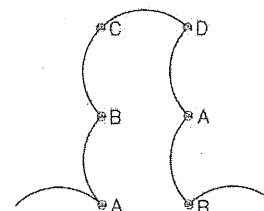
OPEN OFFICES / HALLWAYS		PRIVATE OFFICES		RECOMMENDED PRIVATE OFFICE LAYOUT
CEILING HEIGHT	EMITTER GRID SPACING	ROOM SIZE	EMITTER QUANTITY	
< 8'-5"	8' X 8'	< 180 SQ FT	2	
8'-6" - 11'-6"	10' X 10'	181 - 260 SQ FT	3	
11'-7" - 14'	12' X 12'	261 - 340 SQ FT	4	
> 14'	CALL CSM	> 341 SQ FT	+ 1 FOR EVERY 80 SQ FT MORE	

2. Emitter grid spacing is determined by ceiling height and should be no less than eight (8) foot centers and no more than twelve (12) foot centers. However, emitters may be moved up to two (2) feet in any direction to avoid conflicts with lights, vents or other ceiling fixtures.
3. Emitters must be between two (2) and six (6) feet from any given wall, soffit or other structure(s) that will block sound.
4. As a best practice, emitters should be centered in ceiling tiles.
5. Each Zone consists of two (2) available runs. Each run of daisy-chains can have up to sixty (60) emitters (or combination of emitters and room controls) OR 1,000 feet of cable, whichever comes first.
6. All CSM sound masking solutions utilize four masking channels (A, B, C, D). Avoid having emitters of the same channel next to another to avoid channel interference. Catty-corner is acceptable. CSM emitters have self-configuring channel assignment based on their position in the daisy chain. See diagram to the right.

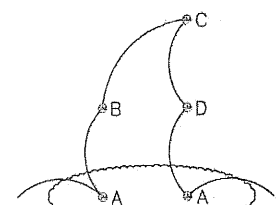
CONTACT US

- Need additional assistance with the layout of a Cambridge Sound Management solution?

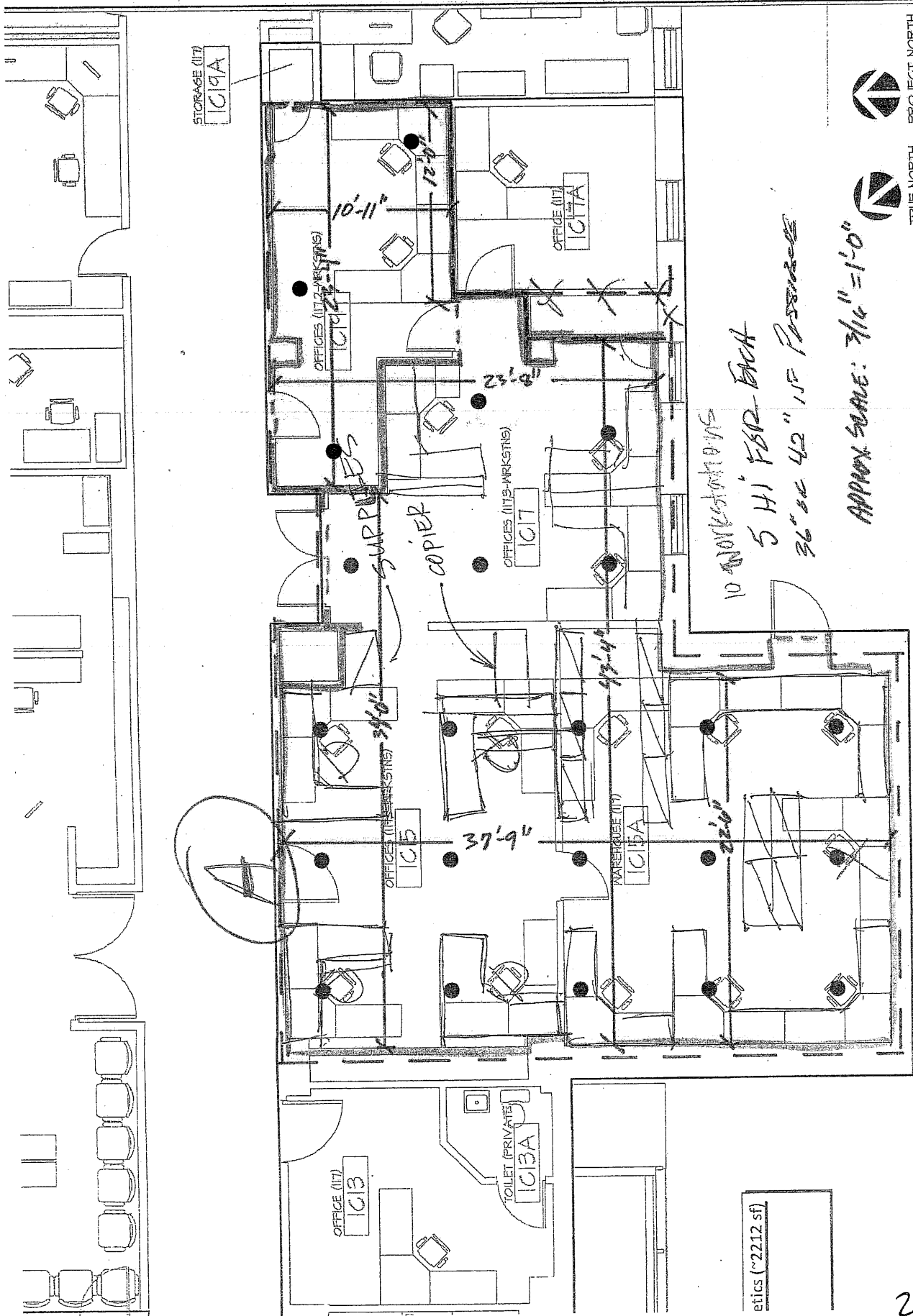
Contact Cambridge Design Team: 800-219-8199 or e-mail designteam@CSMqt.com



CORRECT



INCORRECT



Date

Project Title

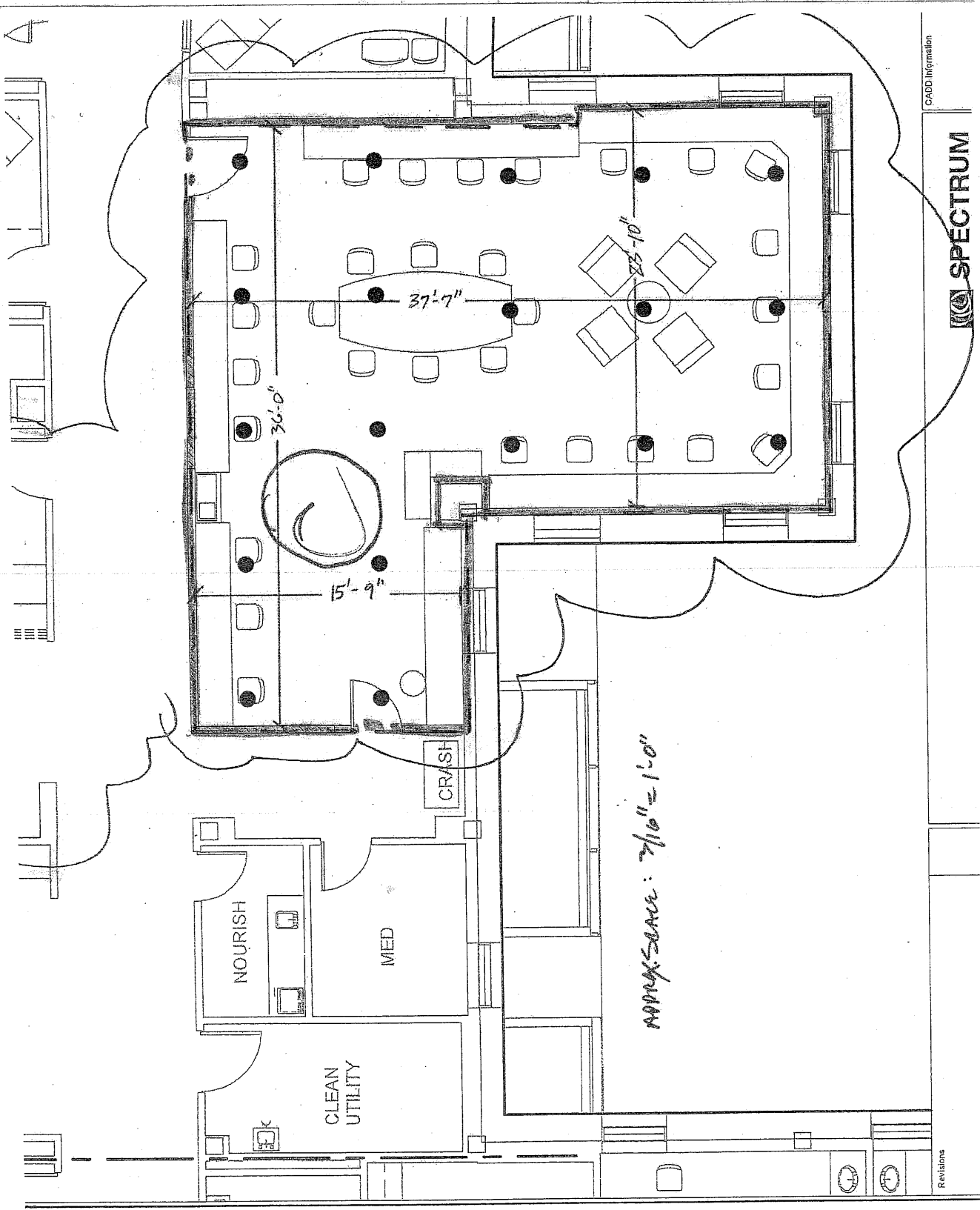
Drawing Title

CADD Information

etics (~2212 sf)

APPROX SCALE: 3/16" = 1'-0"

10 WORKSTATIONS
5 41" FDR EACH
36" x 42" 15' PASSAGE



CADD Information

SPECTRUM

Revisions

