

**A FURNITURE PLAN**  
SCALE: 1/4" = 1'-0"

DRAWN: JIMATH  
DATE: 4.18.14  
REV:  
CORE: 25550

**HENRIKSEN  
BUTLER**  
240 SOUTH 400 EAST 801 353 5801 or  
SALT LAKE CITY UT 84141 801 338 4336 fax  
www.henriksenbutler.com

VA MEDICAL CENTER  
INPATIENT PHARMACY - BLDG 1

CLIENT APPROVAL ☐ APPROVED ☐ APPROVED AS NOTED ☐ NOT APPROVED  
I HAVE REVIEWED THESE PLANS AND THEY  
CONFORM TO OUR REQUIREMENTS. SIGNATURE: \_\_\_\_\_  
I UNDERSTAND THAT ANY MODIFICATIONS  
TO THESE PLANS WILL BE MADE IN  
ADDITIONAL CHARGES. DATE: \_\_\_\_\_

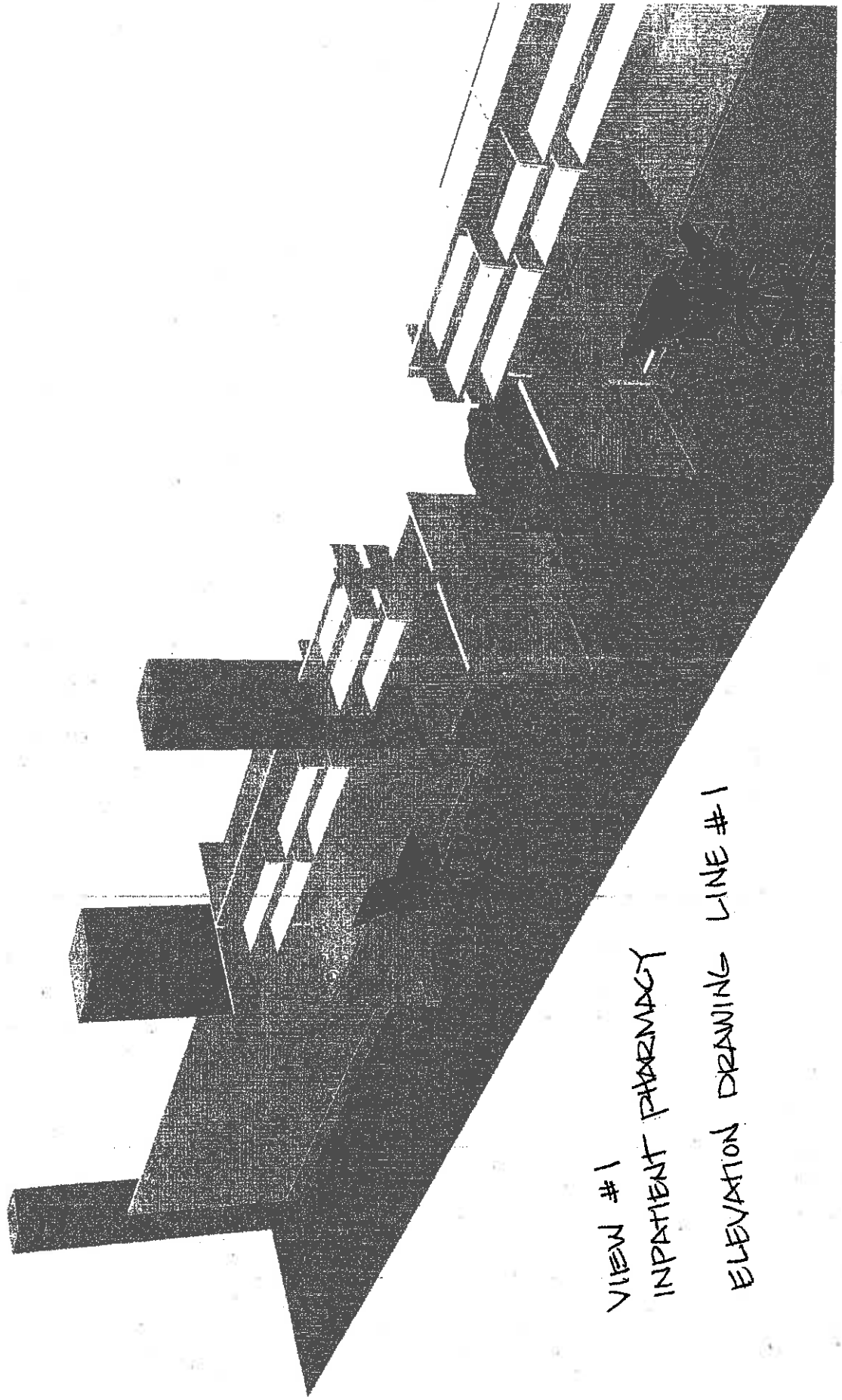
THE DRAWING MATERIAL AND DESIGN CONCEPTS ON THIS PAGE REMAIN AT ALL TIMES PROPERTY OF  
HENRIKSEN BUTLER DESIGN GROUP, LLC. REPRODUCTION OF THE MATERIAL AND DESIGN CONCEPTS  
HEREIN IS PROHIBITED WITHOUT WRITTEN CONSENT OF HENRIKSEN BUTLER DESIGN GROUP, LLC.

ACAD: 25550VA  
ZAD: 25550VA  
ACT HQR: MM

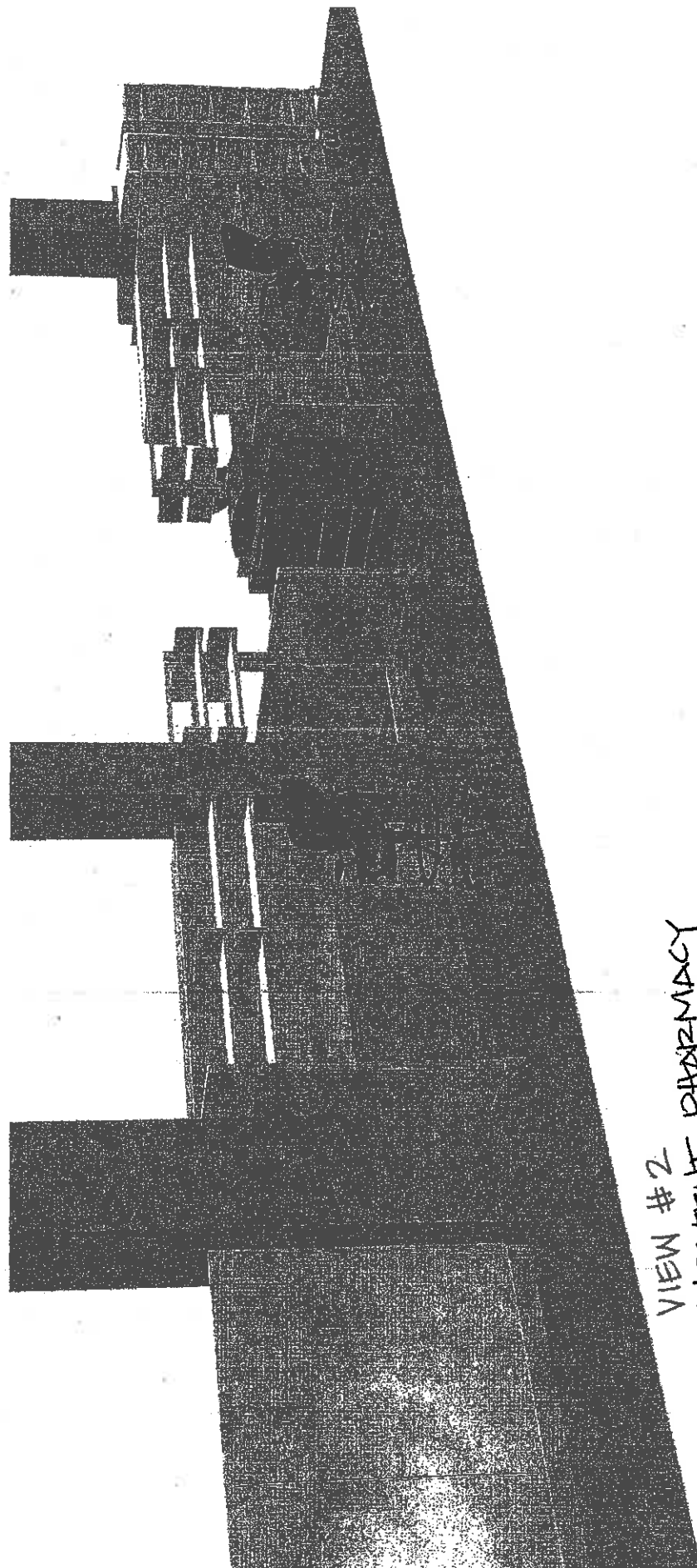
**HermanMiller**  
certified dealer

INPATIENT PHARMACY  
FLOOR PLAN DRAWING LINE # 1

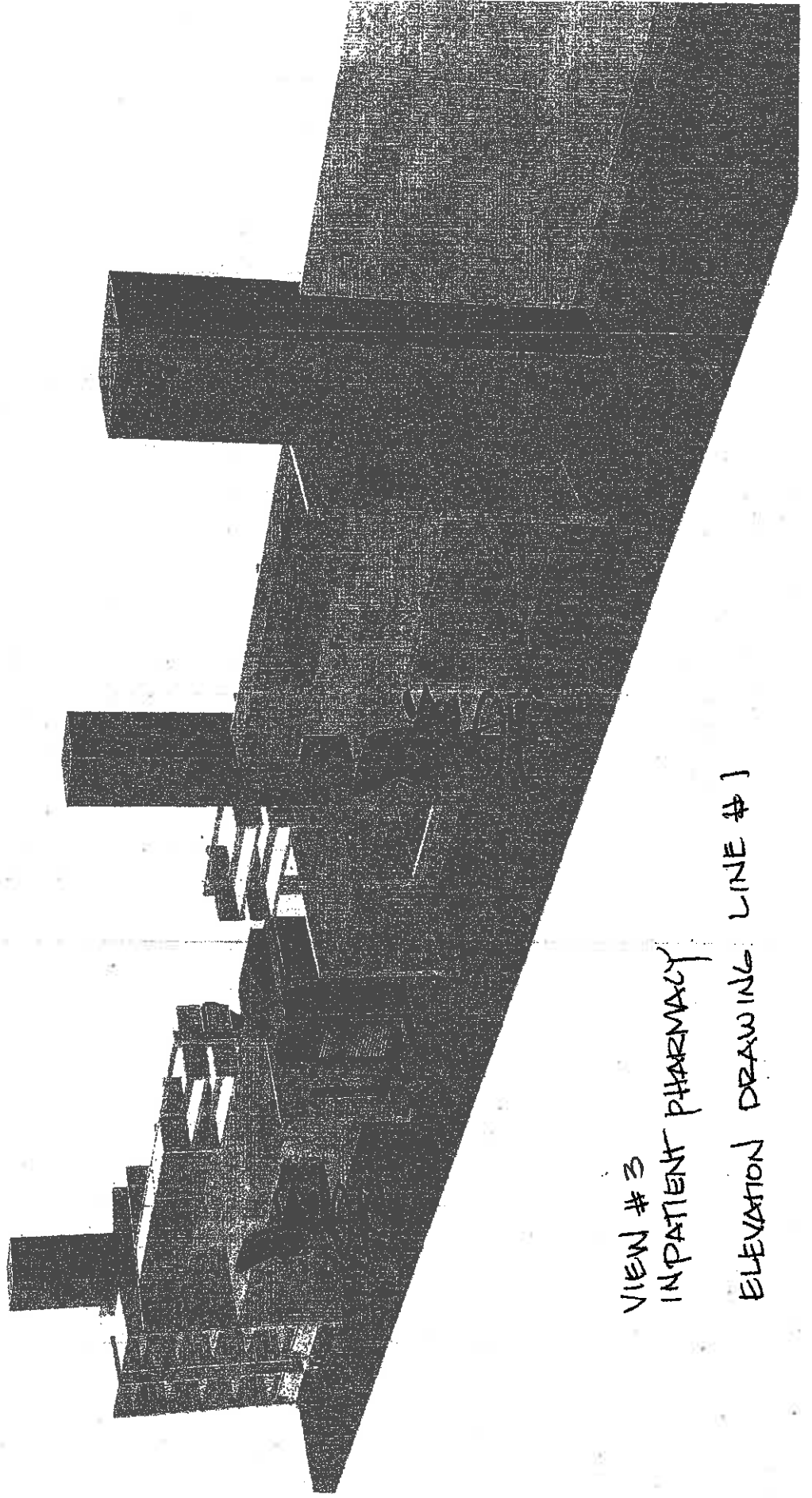
1 of 4



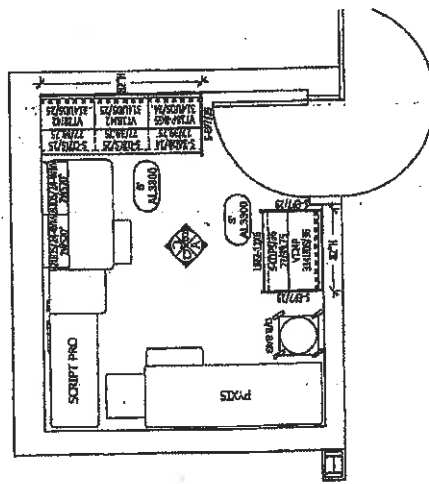
VIEW #1  
INPATIENT PHARMACY  
ELEVATION DRAWING LINE #1



VIEW #2  
INPATENT PHARMACY  
ELEVATION DRAWING LINE #1



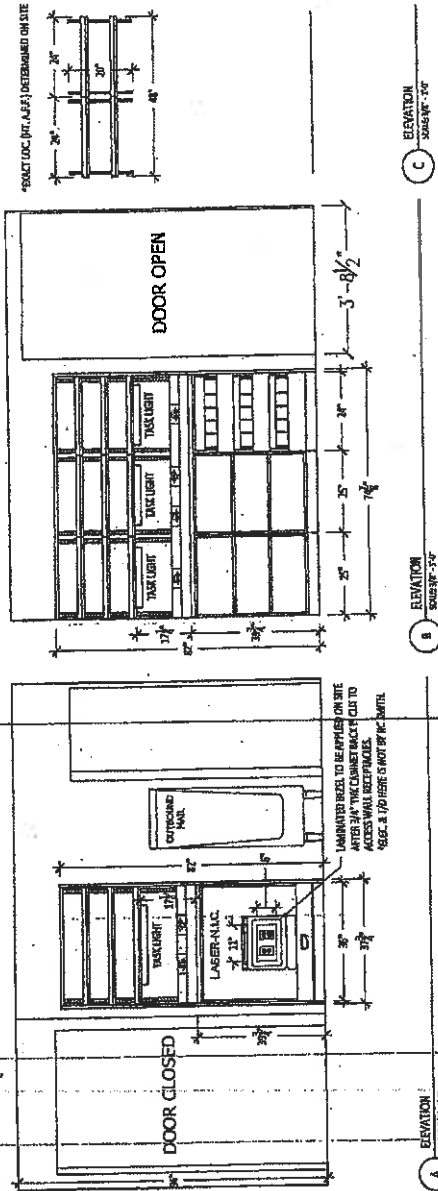
VIEW #3  
INPATIENT PHARMACY  
ELEVATION DRAWING LINE #1



INSTALLATION NOT BY R.C. SMITH

# FIXTURE FLOOR PLAN

SCALE: 1/4" = 1'-0"



DRAWING FOR LINE # 7  
OUTPATIENT PHARMACY  
FILLING STATIONS  
VAULT



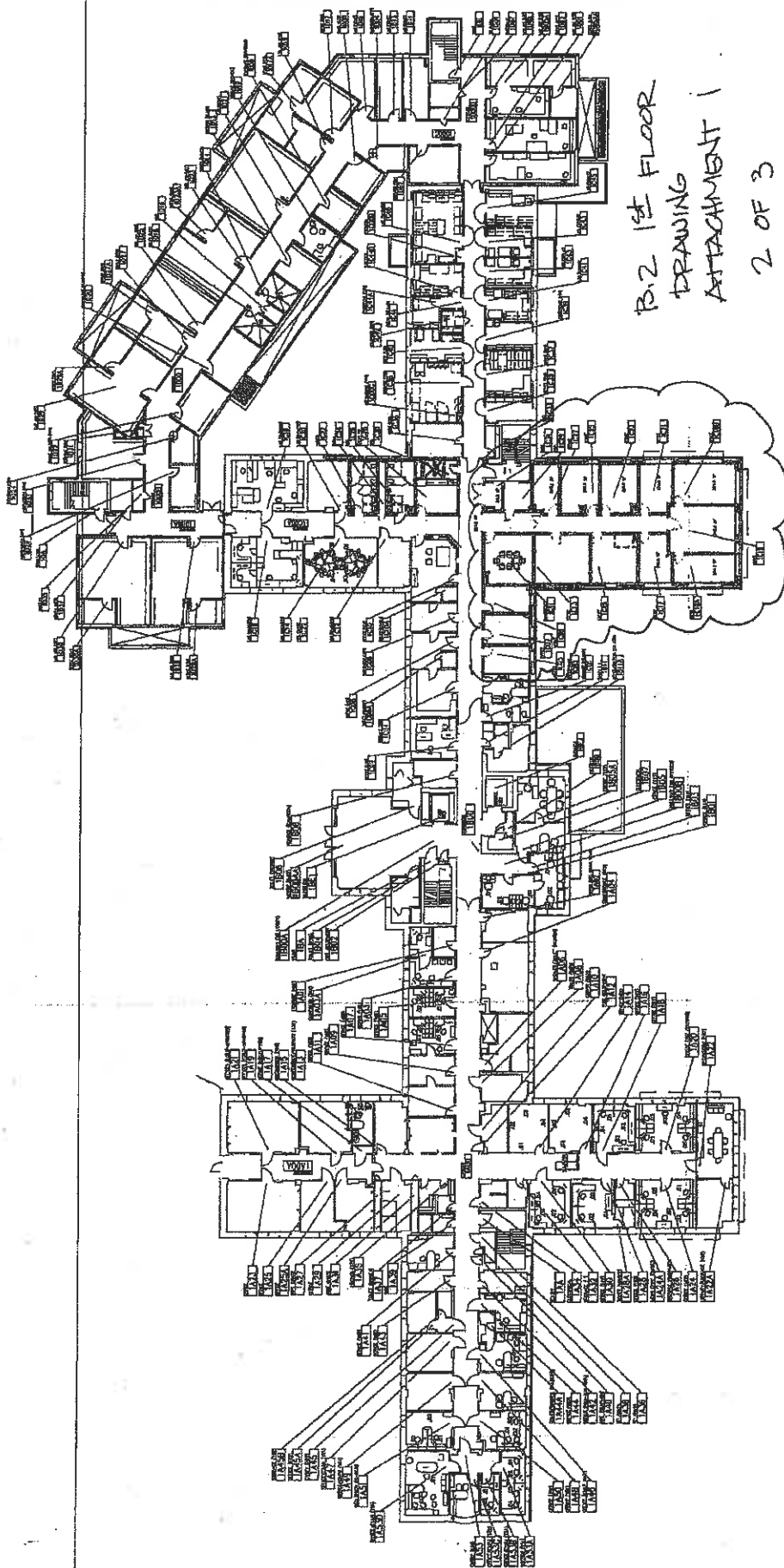
R.C. Smith Company  
14200 Southcross Drive West  
Burnsville, MN 55306  
(952) 854-0711 (952) 854-5160 FAX  
HTTP://WWW.RCSMITH.COM

DESCRIPTION:

DATE: REV. B - 7/16/14  
DRAWN BY: C.D.  
SCALE: AS NOTED  
DISK REF. #: UT-10786

VA HEALTH CARE SALT LAKE CITY  
OUTPATIENT PHARMACY - VAULT LOC.  
500 Foothill Blvd, Bldg 1 OF PHARMACY  
SALT LAKE CITY, UT 84143





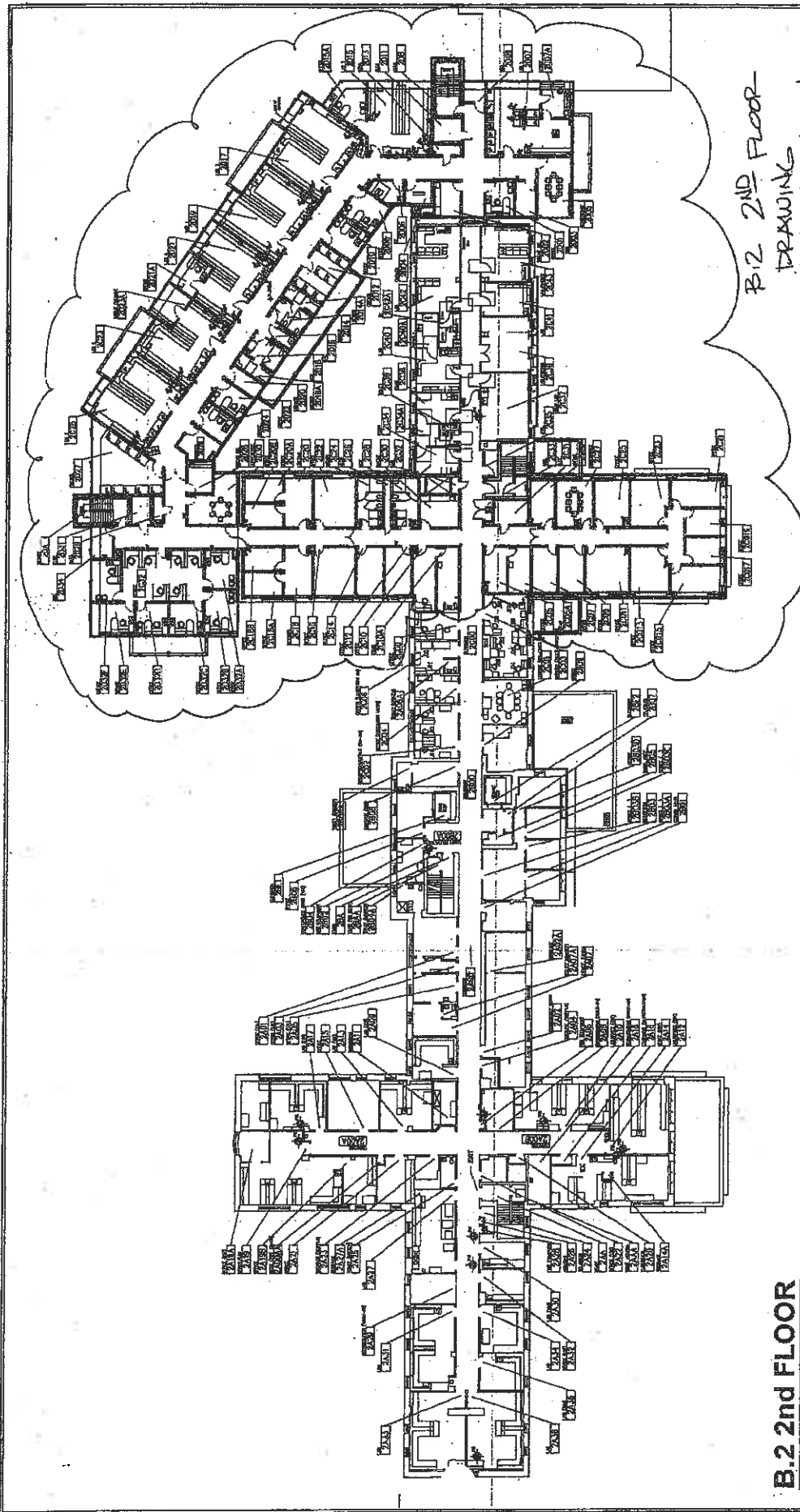
B.2 1st FLOOR  
DRAWING  
ATTACHMENT 1  
2 OF 3

**B.2 1st FLOOR**  
1/32"=1'-0"



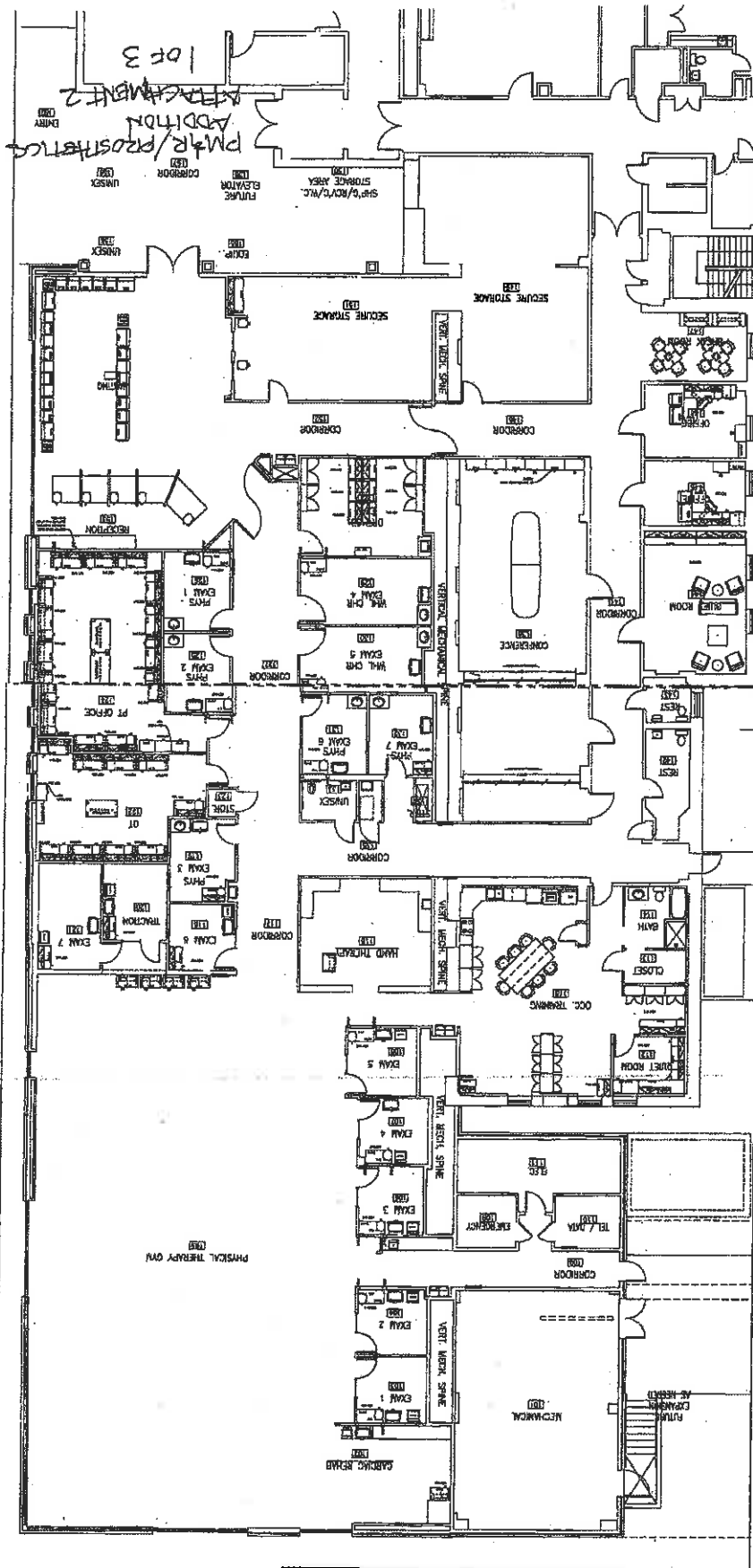
Project Title B.2 FIRST FLOOR PLAN		Project No. 02/13	Department of Veterans Affairs
Design Approved: [Signature]		Project Manager B.2	Drawing Number A-2
Date 02/13		Project Location VAMC, SLC, UTAH	Revision 1 of 4
Approved: [Signature] Project Engineer		Approved: [Signature] Project Manager	Approved: [Signature] Project Engineer

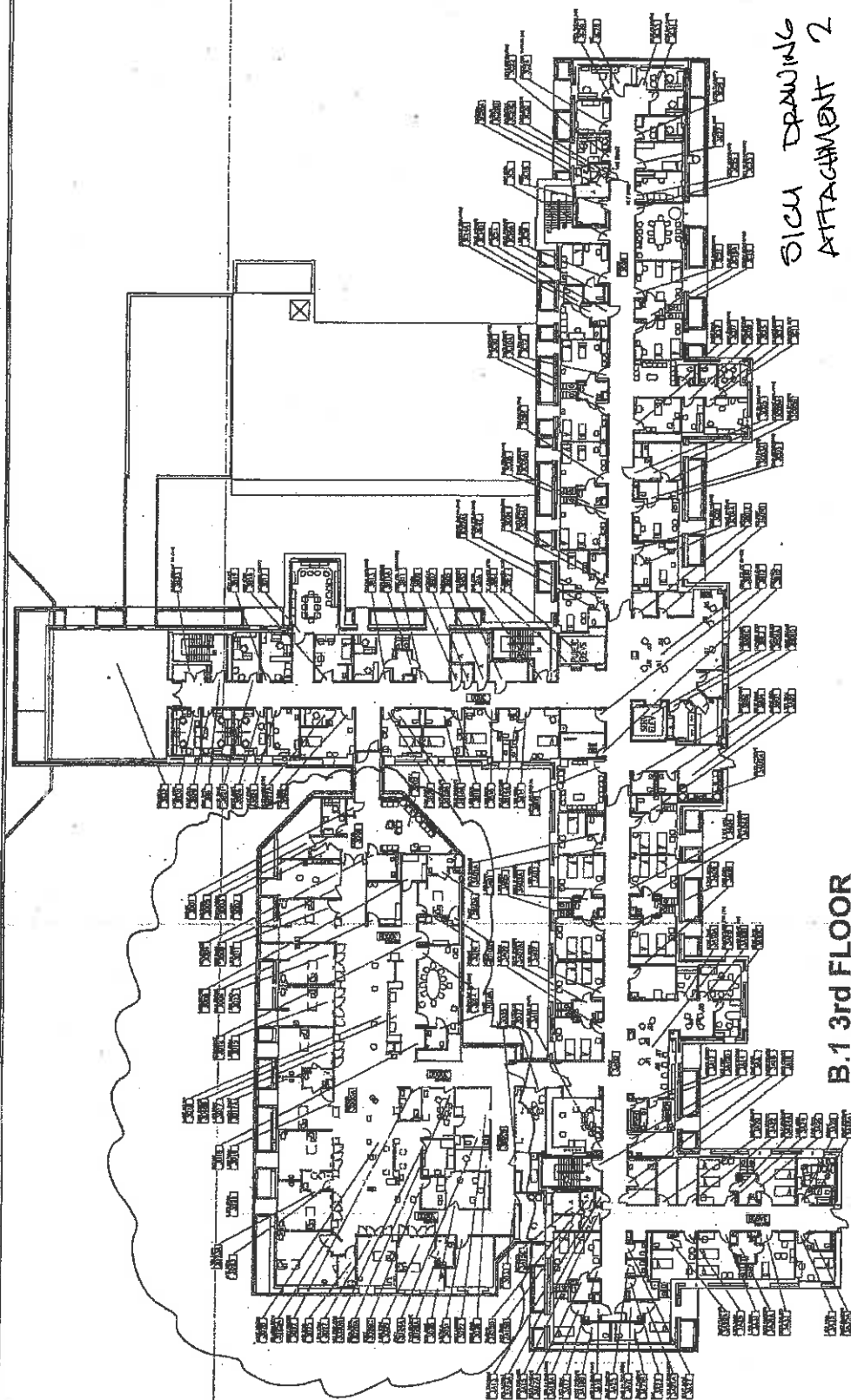




B-2 2ND FLOOR  
DRAWING  
ATTACHMENT 1  
30F3

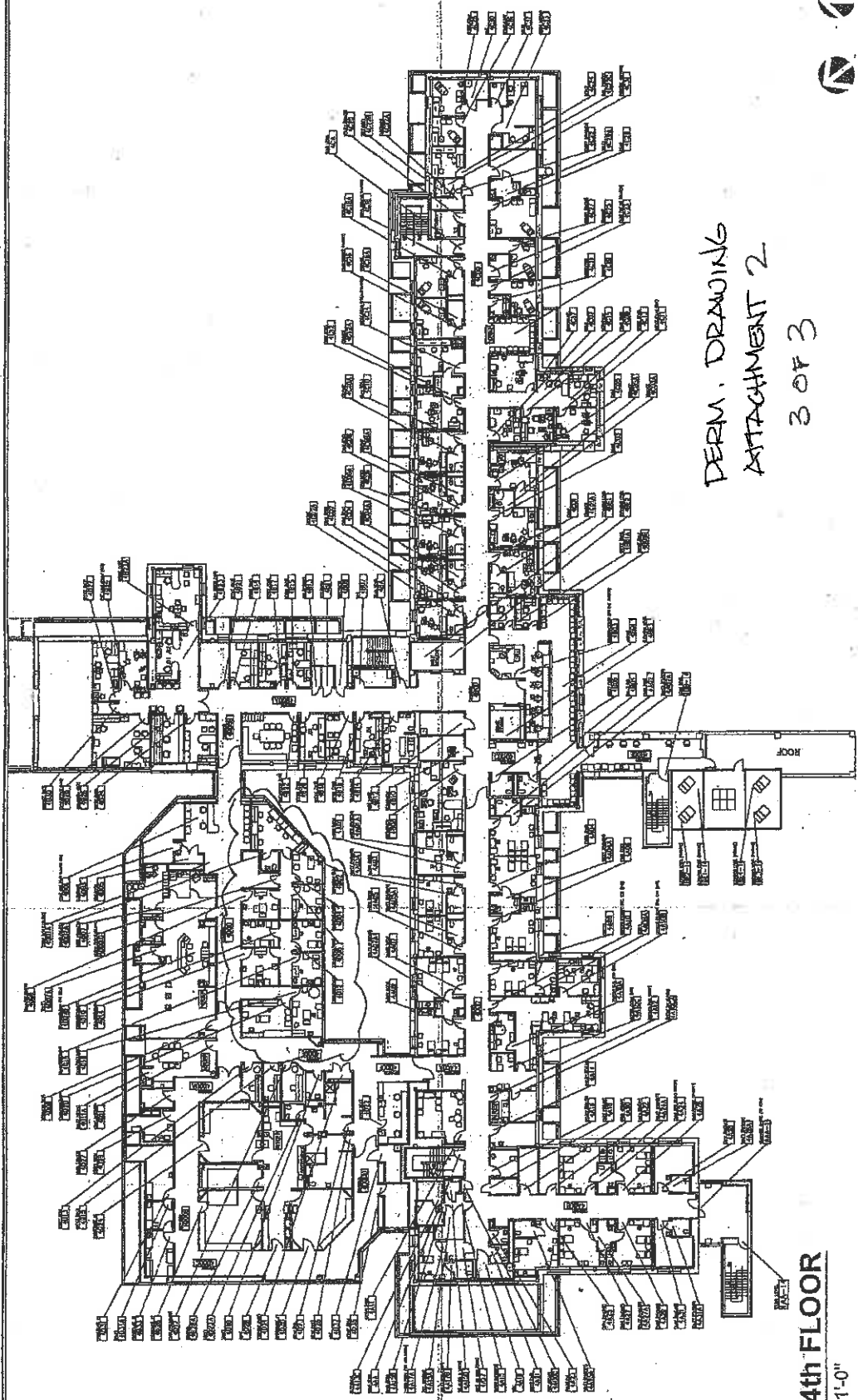
[illegible]





SICU DRAWING  
ATTACHMENT 2  
2 OF 3

650 University CAD/CIT 100B/ARCH151-4-5		Project File B.1 THIRD FLOOR PLAN		Project No. ARCHITECTURAL ASBUILTS		Date 02/13	
				Project No. A-4		Date 4-8	
		Approved Approved Initial Date Revisi		Items CRYAN		Building Number B. 1	
		Approved Approved Date, Expanding		Initial Initial		Location VAMC, SLC, UTAH.	



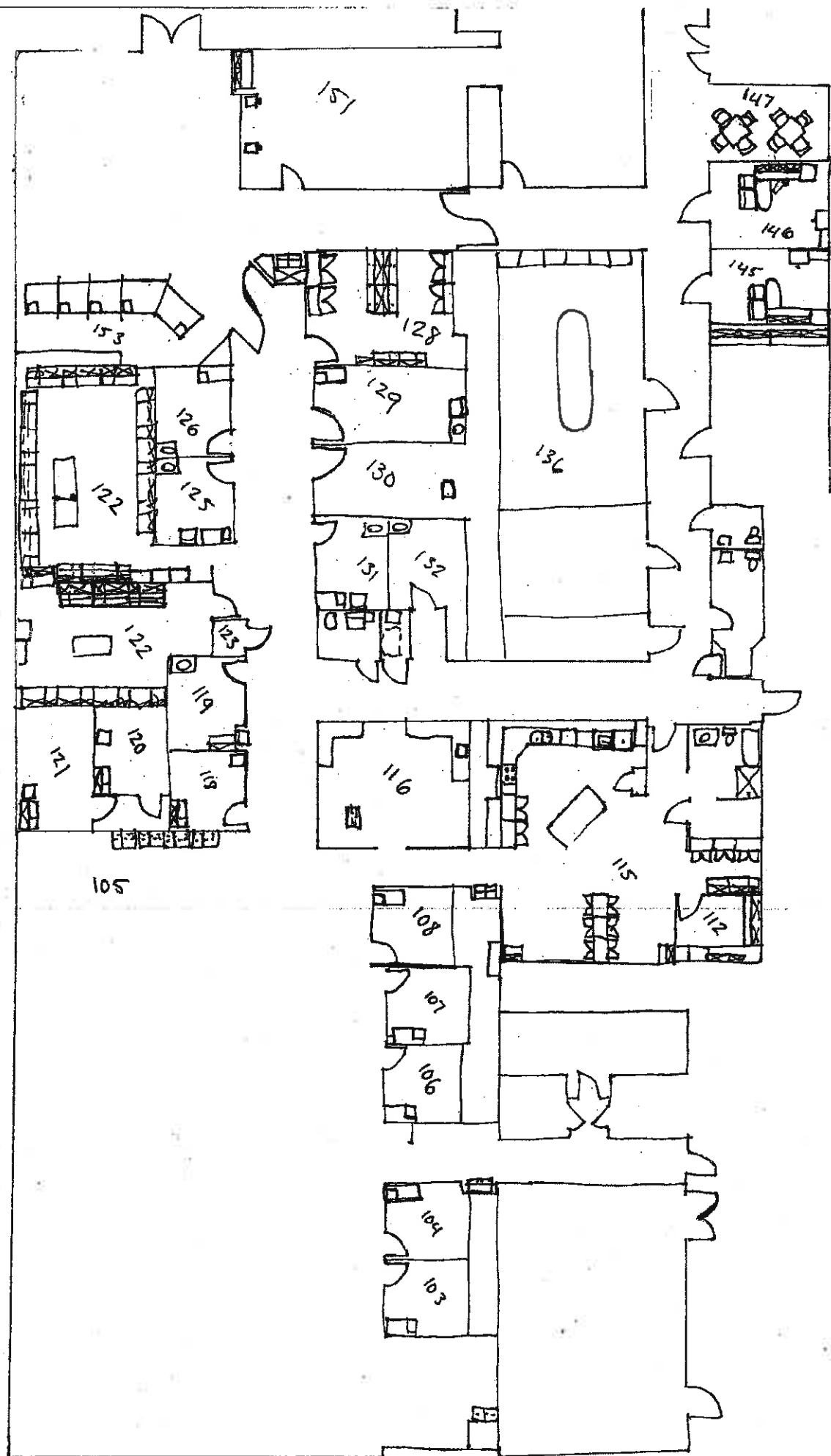
DERM. DRAWING  
ATTACHMENT 2  
3 OF 3

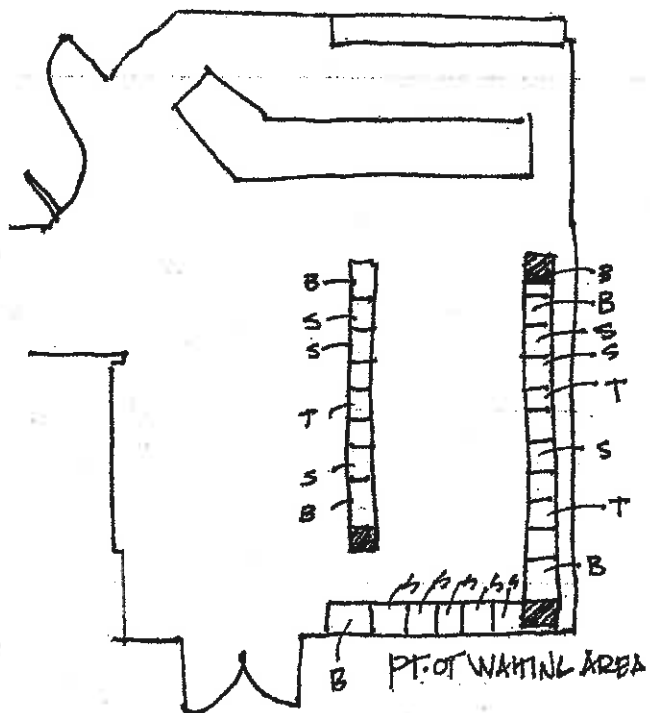
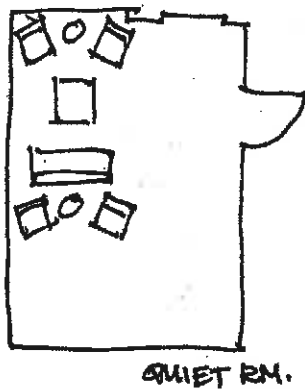
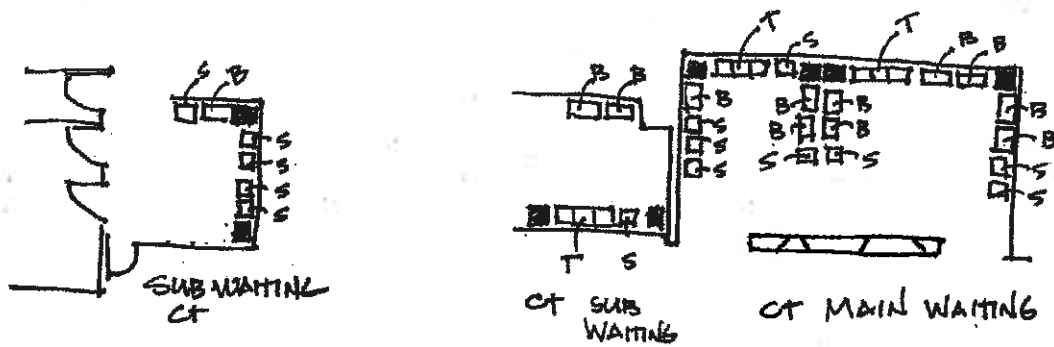
**B.1 4th FLOOR**  
1/32"=1'-0"



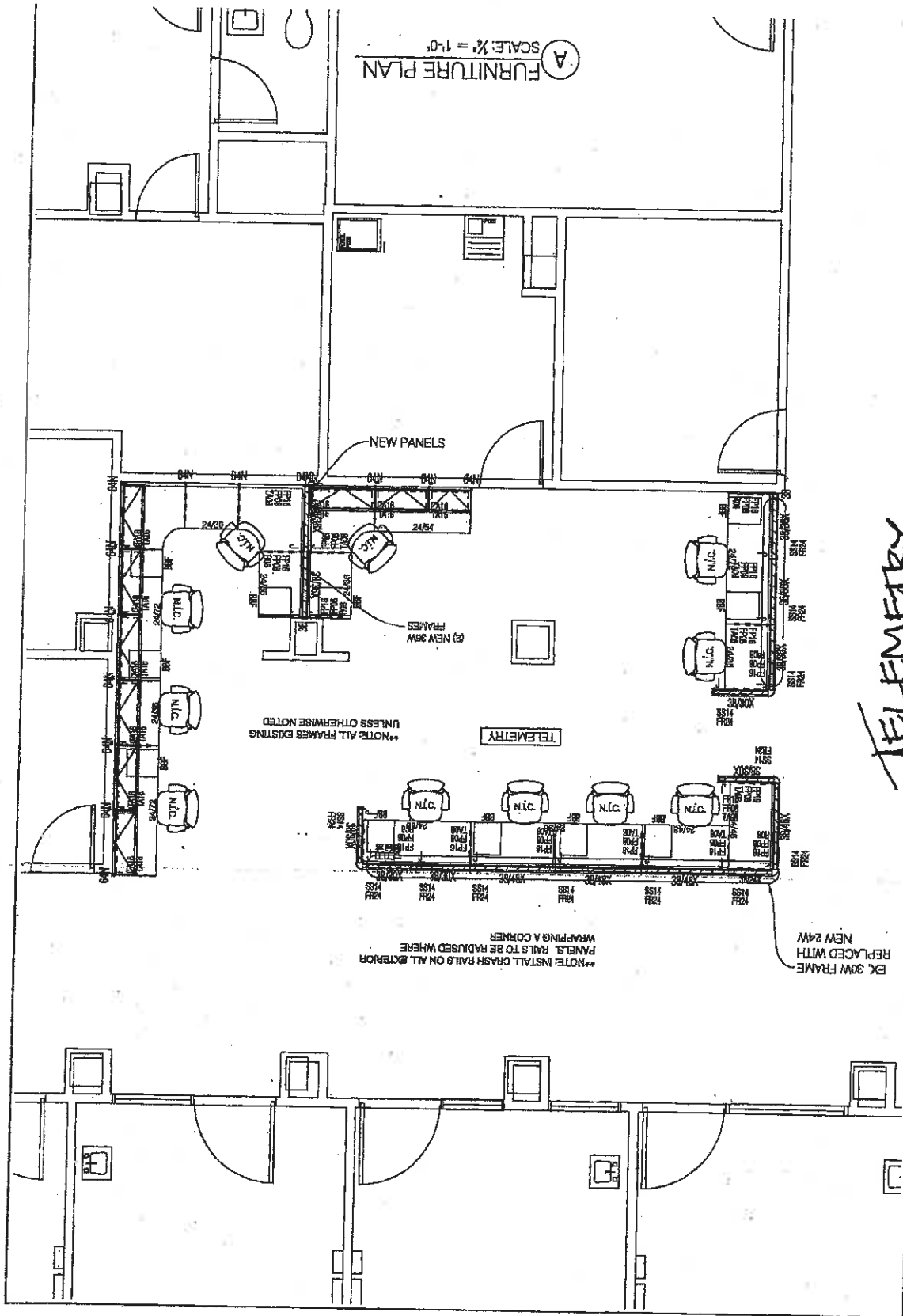
Drawing Title <b>ARCHITECTURAL ASBLUTS</b>		Date 02/13	Project No. A-5
Drawing Subtitle <b>B.1 FLOOR PLAN</b>		Design CRYAN	Location A-5
Drawing Scale 1/32"=1'-0"		Approved [Signature]	
Drawing Date 02/13		Approved Date 02/13	

Department of  
Public Affairs



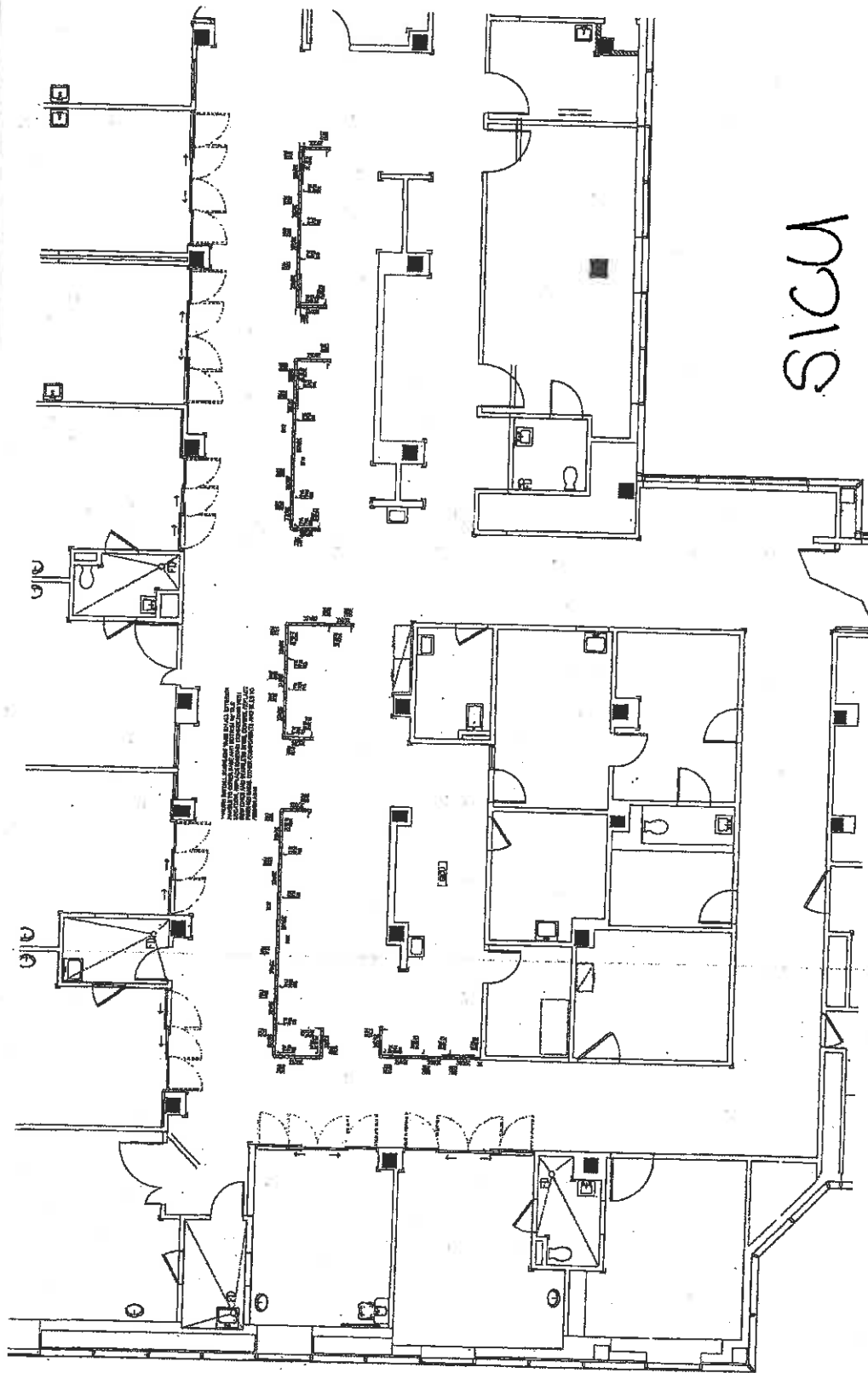


DRAWING  
PT. OT . CT



(A) FURNITURE PLAN  
SCALE: 1/8" = 1'-0"

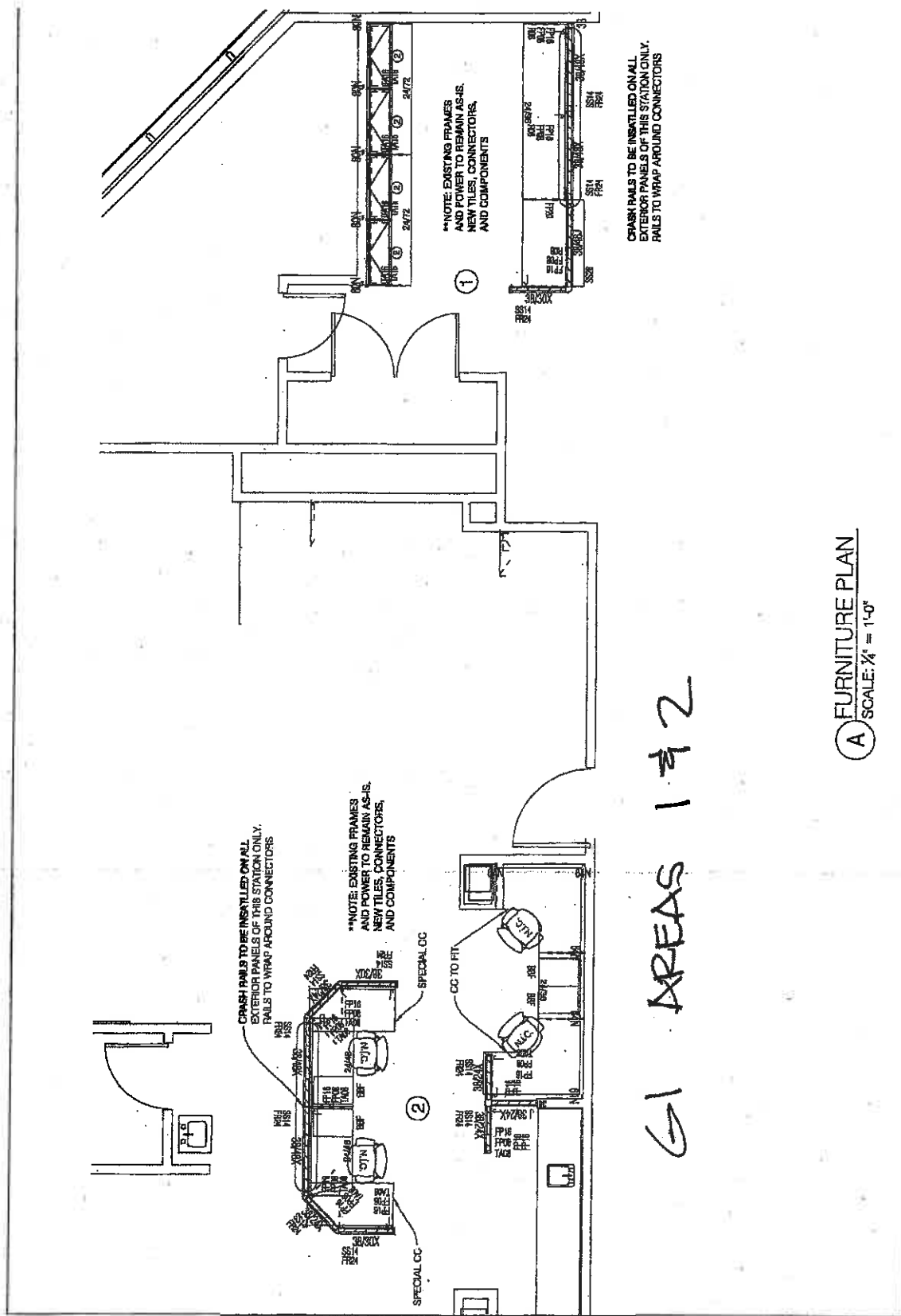
TELEMETRY



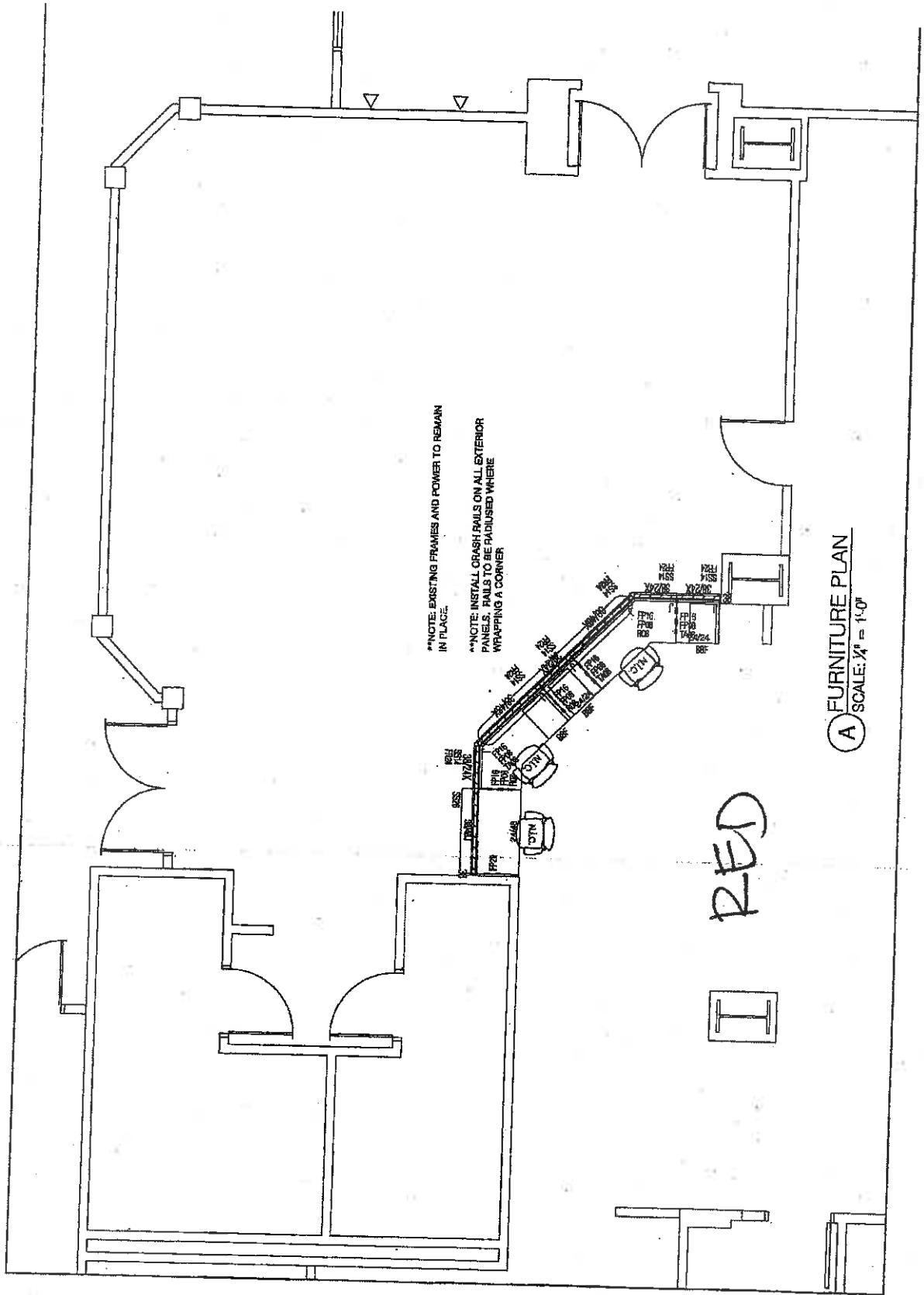
SICU

FURNITURE PLAN  
SCALE: 1/8" = 1'-0"

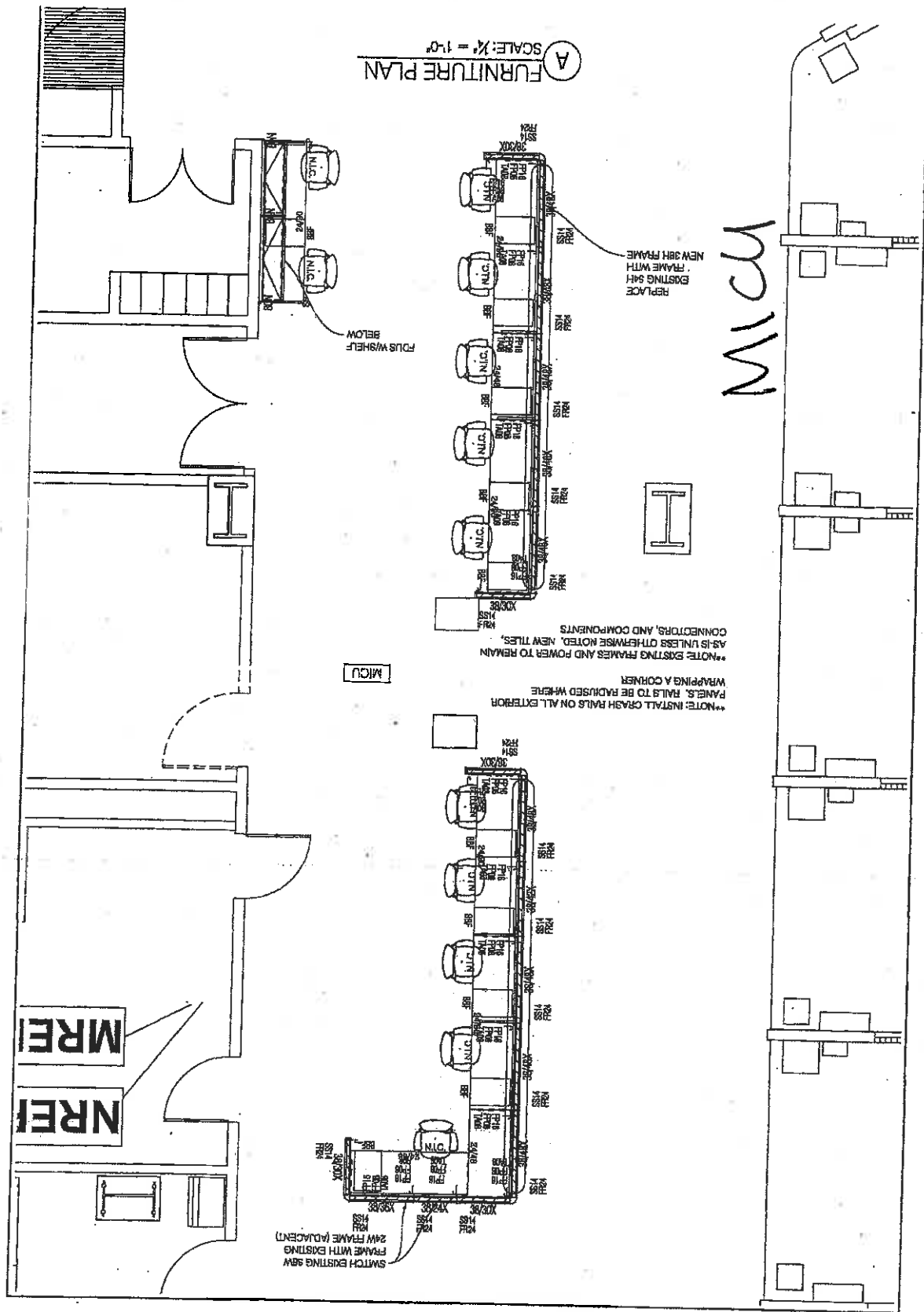




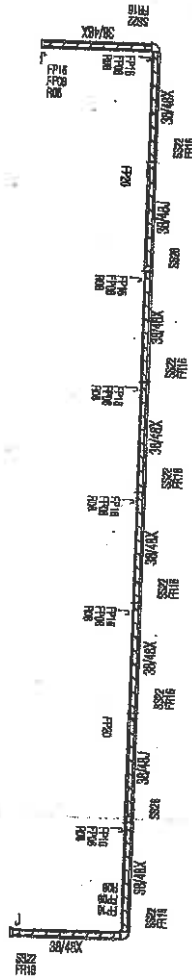
A FURNITURE PLAN  
SCALE: 1/4" = 1'-0"







A FURNITURE PLAN  
SCALE: 1/4" = 1'-0"



NOTE: REPLACE EXISTING BOTTOM TILE WITH TOILET FLOOR  
STAINLESS TILES IN ALL EXTERIOR LOCATIONS. REPLACE  
EXISTING CONNECTORS WITH NEW AND STAINLESS COVERS.  
ALL OTHER COMPONENTS AND TILES TO REMAIN AS-IS

BLUE

A FURNITURE PLAN  
SCALE: 1/4" = 1'-0"