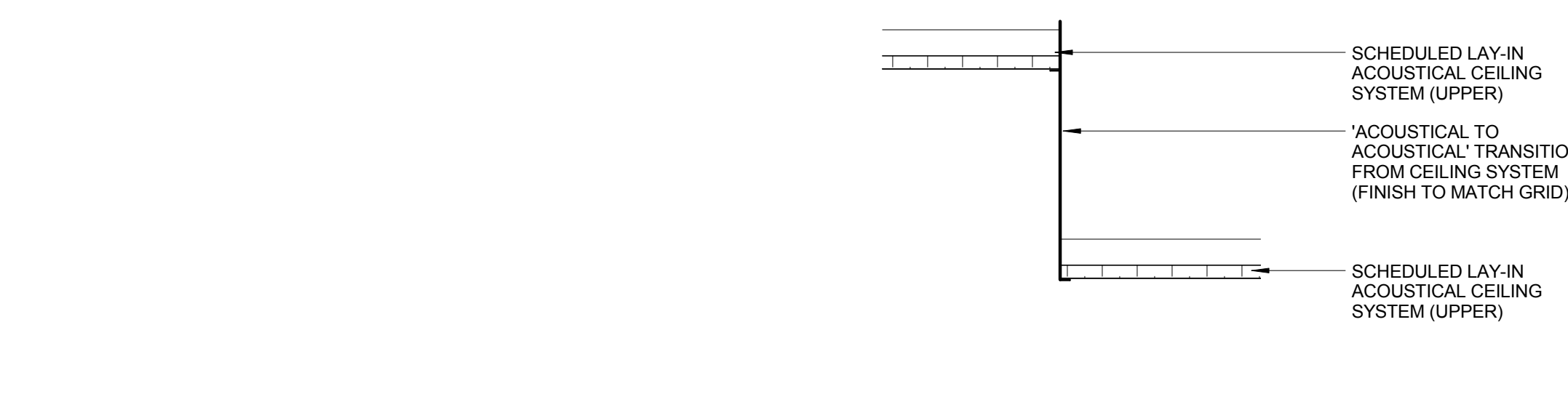


three inches = one foot
one and one half inch = one foot
one inch = one foot
three quarters inch = one foot
one half inch = one foot
three eighths inch = one foot
one quarter inch = one foot
one eighth inch = one foot
one sixteenth inch = one foot

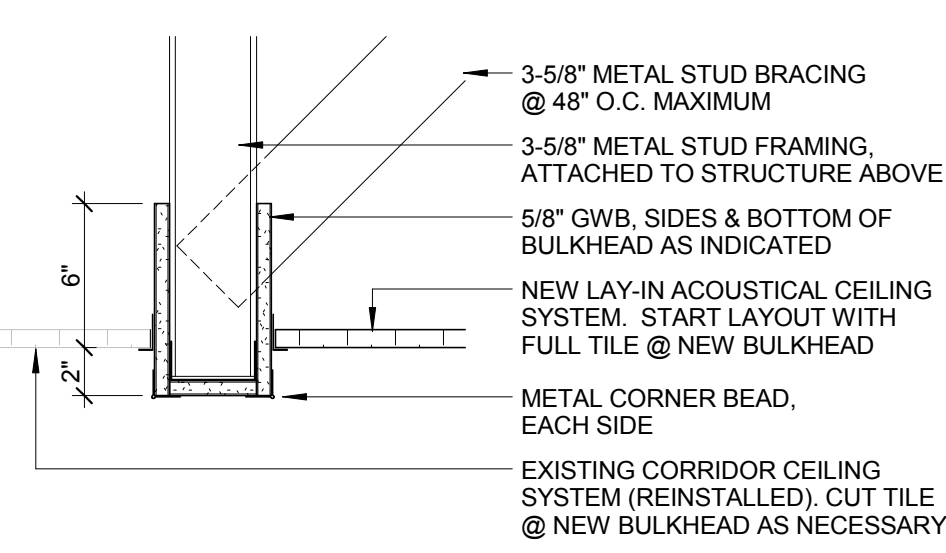
A
B
C
D
E
F

16
8
4
0

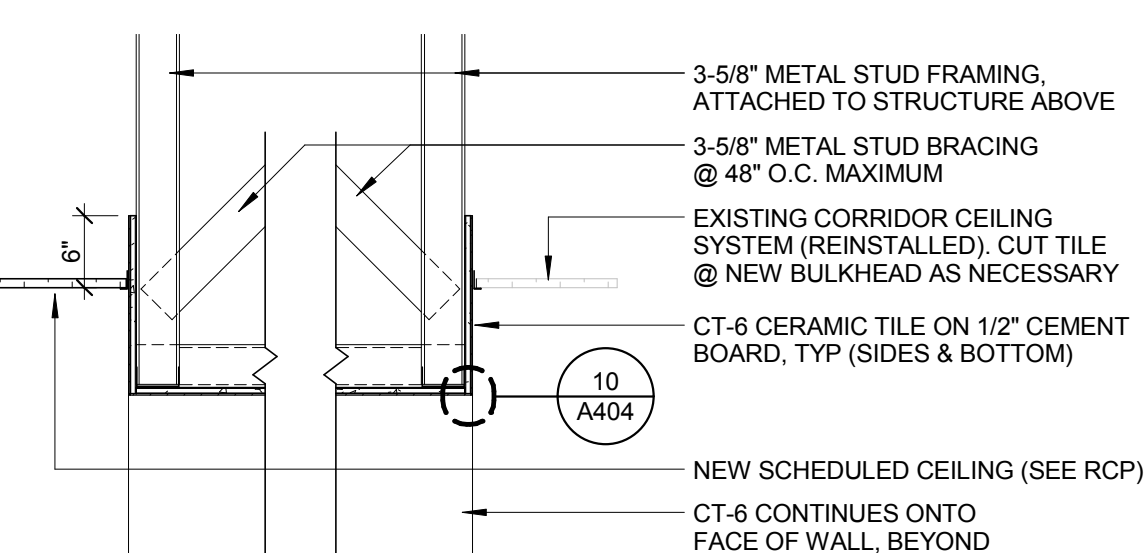
one eighth inch = one foot



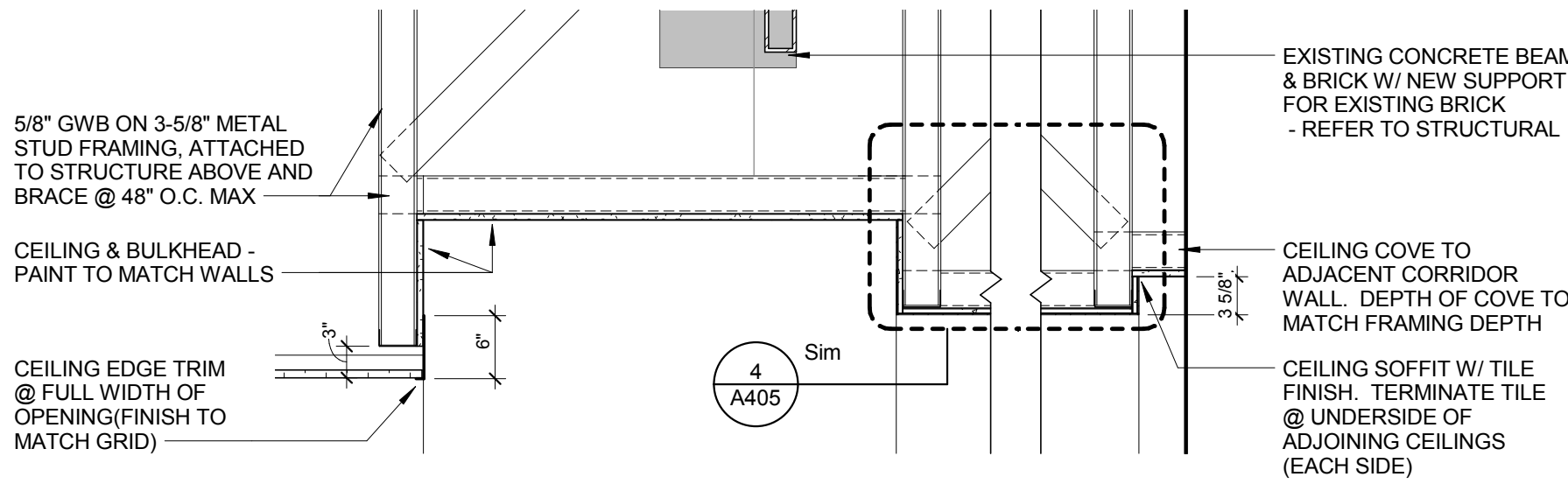
6 CEILING DETAIL - TRANSITION DETAIL
1 1/2" = 1'-0"



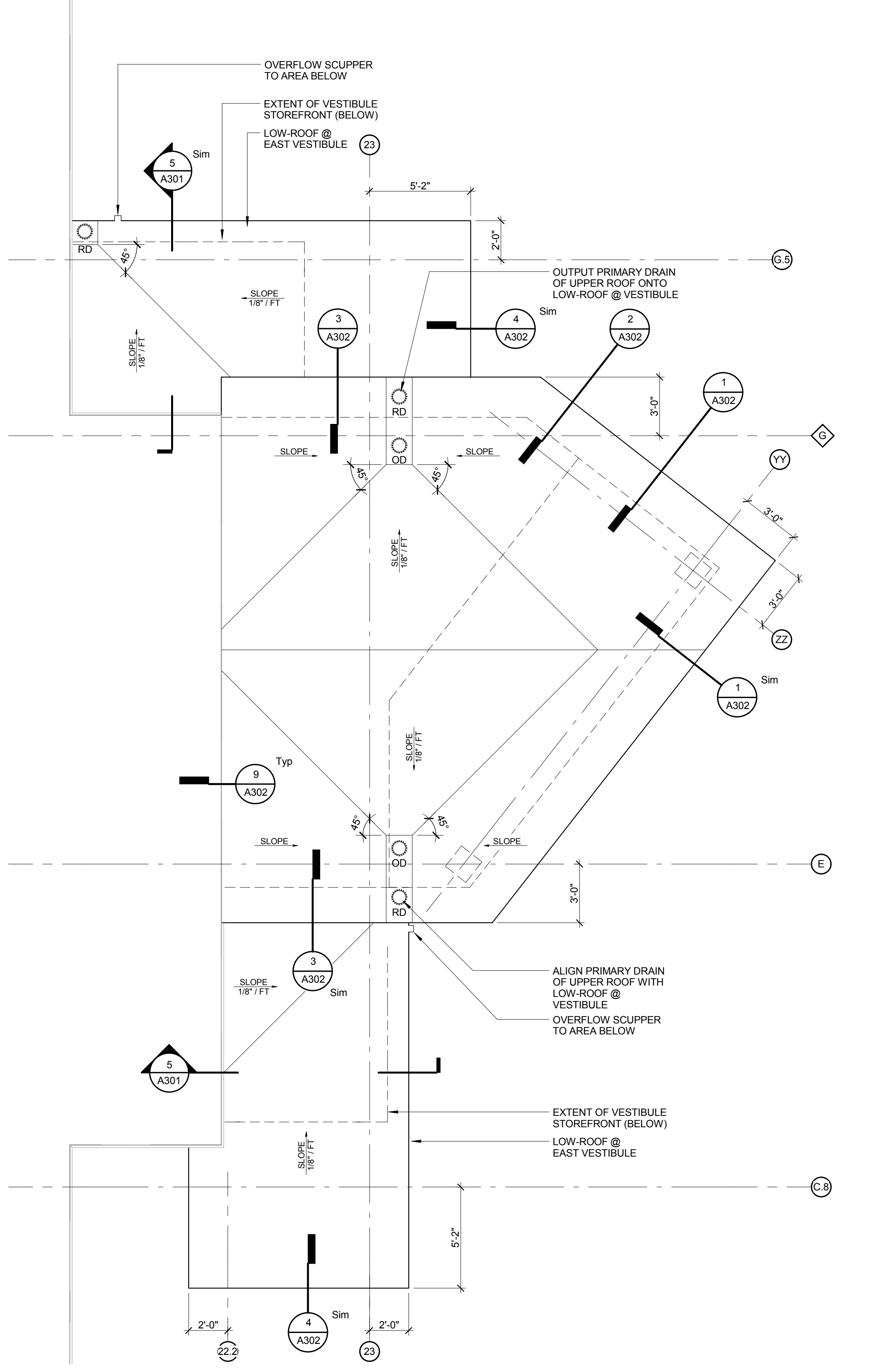
5 CEILING DETAIL BULKHEAD @ EXISTING / NEW CEILINGS
1 1/2" = 1'-0"



4 SECTION - ENTRY CEILING W/ TILE
3/4" = 1'-0"



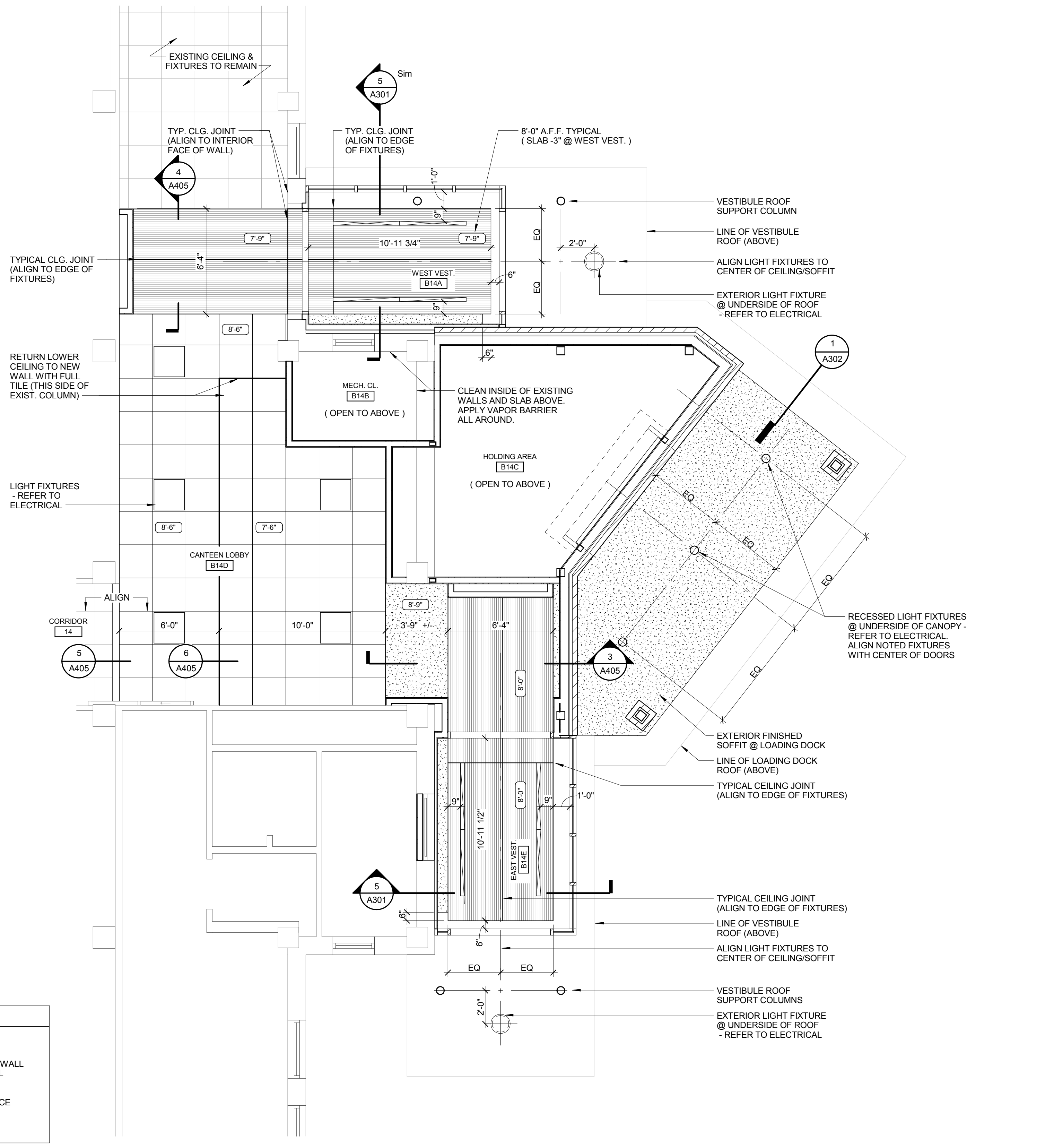
3 CEILING SECTION - EAST VESTIBULE ENTRY
3/4" = 1'-0"



2 LOADING DOCK ROOF PLAN
1/4" = 1'-0"

REFLECTED CEILING PLAN SYMBOL LEGEND	
	2' x 2' LAY-IN ACOUSTICAL TILE CEILING SYSTEM. SEE ROOM FINISH SCHEDULE FOR SPECIFIC TYPE
	GYPSUM BOARD BULKHEAD/ SUSPENDED GYPSUM BOARD SYSTEM
	CERAMIC TILE (CT-6) OVER 1/2\"/>
	CEILING HEIGHT
	AREA OF WORK

- GENERAL NOTES:**
- SEE FIRE PROTECTION DRAWING SHEETS FOR SPRINKLER HEAD LAYOUT
 - REFLECTED CEILING PLANS SHOW CEILING MOUNTED ITEMS ONLY. ADDITIONAL WALL MOUNTED LIGHTING, HVAC ITEMS, EXIT SIGNS, ETC. ARE INDICATED ON INDIVIDUAL ELECTRICAL AND HVAC FLOOR PLAN SHEETS.
 - WHERE INDIVIDUAL CEILINGS WERE REMOVED AS PART OF DEMOLITION, REPLACE WITH A NEW CEILING TO MATCH THE EXISTING THAT WAS REMOVED.
 - CEILING DETAILS ARE DIMENSIONED FROM FACE OF FINISH.



1 LOADING DOCK ENTRY - REFLECTED CEILING PLAN
1/4" = 1'-0"

CONSULTANTS:		ARCHITECTS/ENGINEERS:		Drawing Title LOADING DOCK ENTRY RCP AND ROOF PLAN		Project Title BUILDING 9 - SECOND FLOOR RENOVATION		Project Number 542-13-105		Office of Construction and Facilities Management Department of Veterans Affairs	
				Approved: Project Director		Location: 1400 Blackhorse Hill Road Coatesville, PA 19320		Building Number 9			
Revisions:		Date		Date 05 / 12 / 14		Checked BB		Drawn JB			
								Drawing Number A405			
								Dwg. 54 of 125			