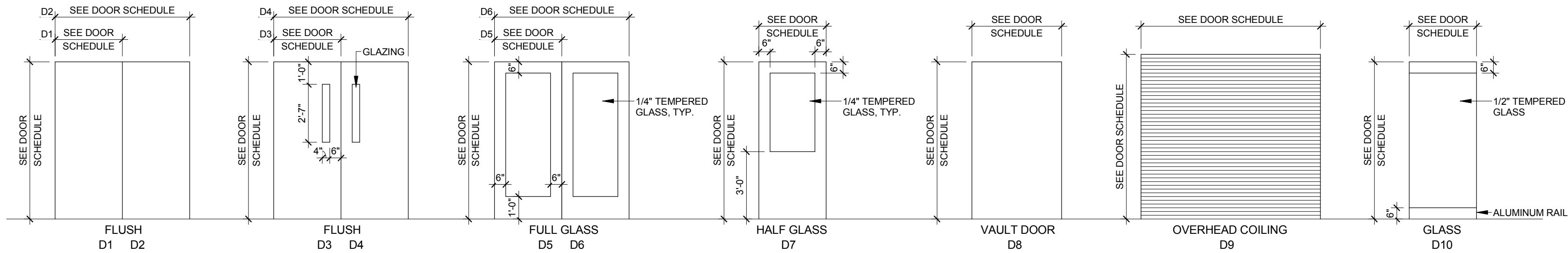
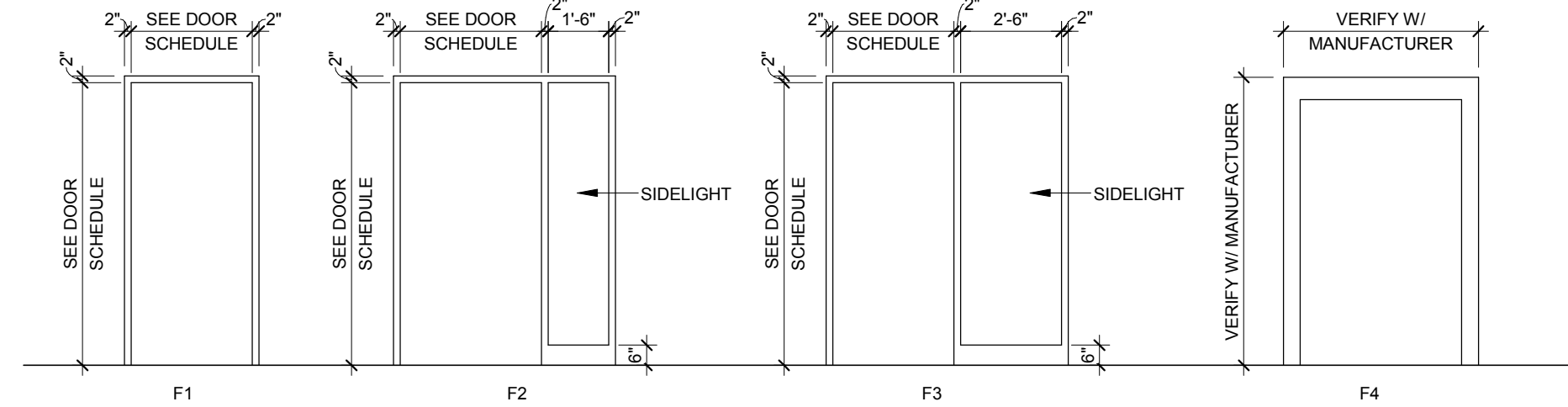


three inches = one foot
one and one half inch = one foot
one inch = one foot
three quarters inch = one foot
one half inch = one foot
three eighths inch = one foot
one quarter inch = one foot
one eighth inch = one foot



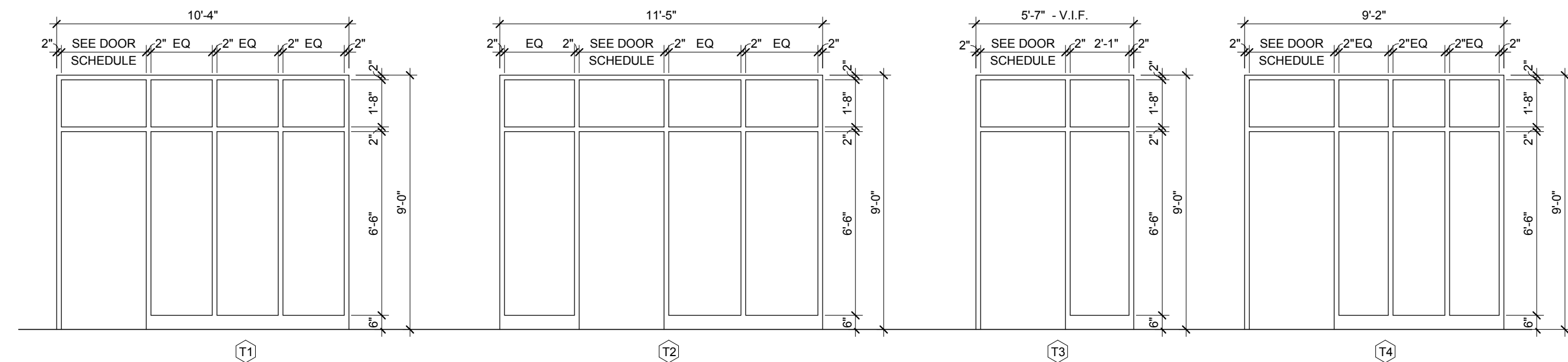
1 DOOR TYPES

1/4" = 1'-0"



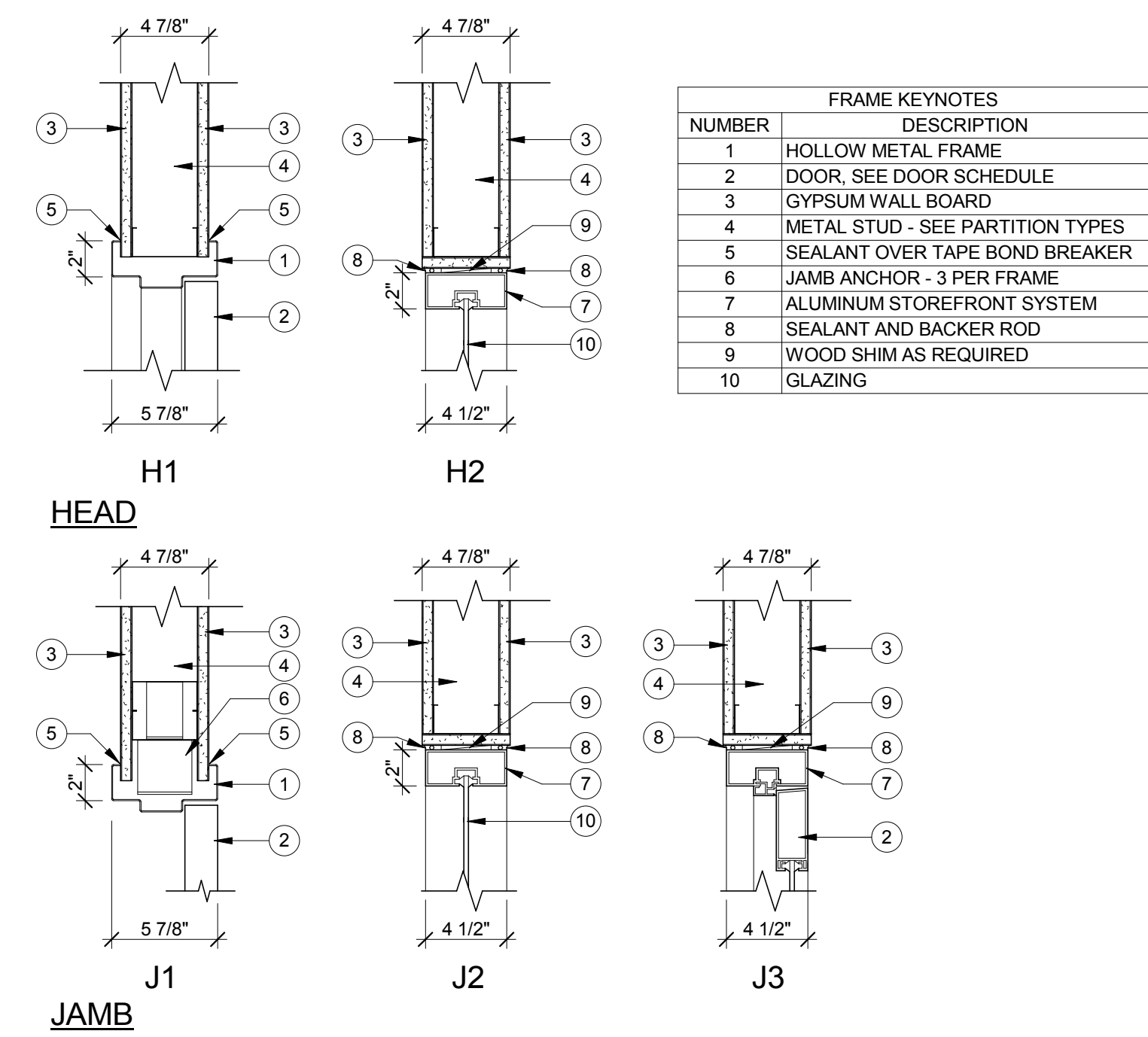
2 FRAME TYPES

1/4" = 1'-0"



3 STOREFRONT TYPES

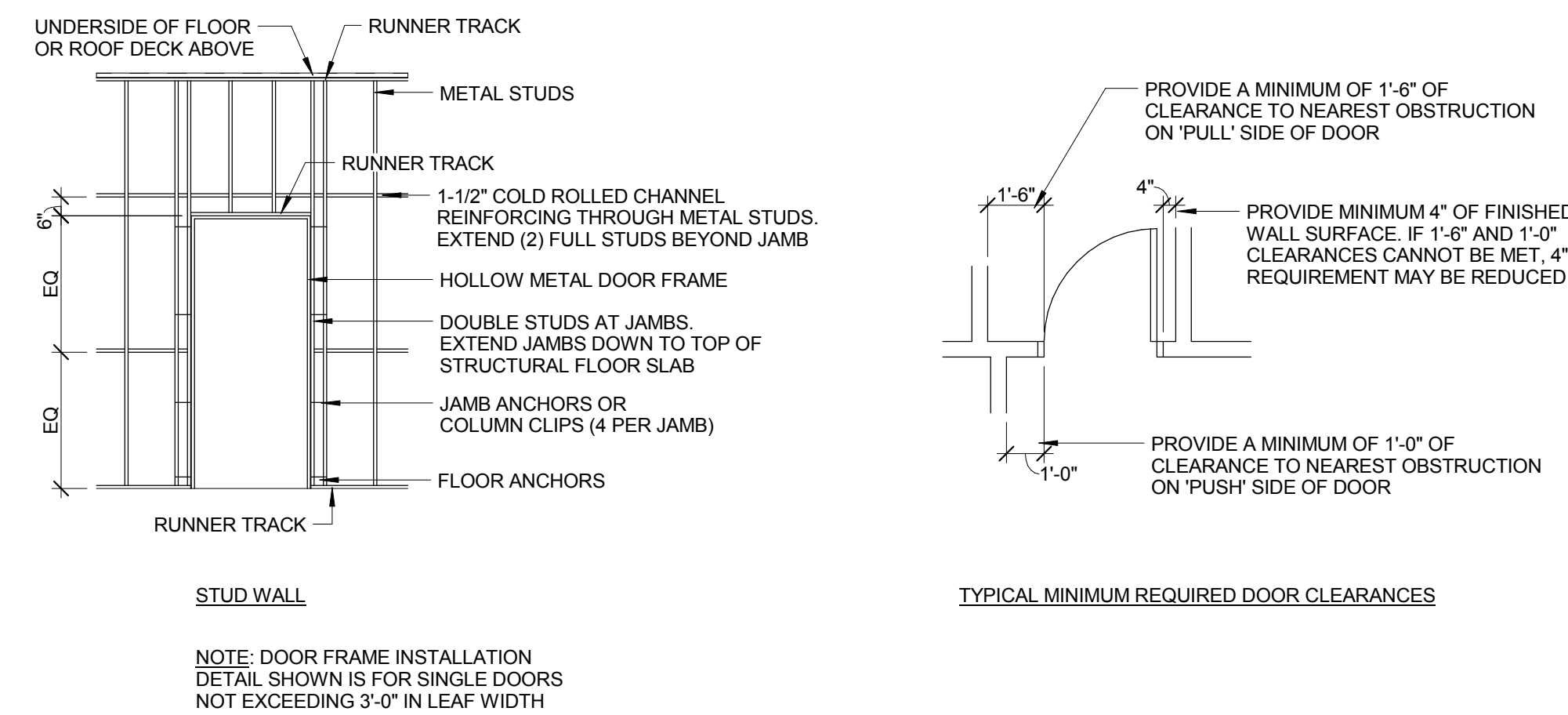
1/4" = 1'-0"



4 INTERIOR DOOR FRAME DETAILS

1 1/2" = 1'-0"

DOOR SCHEDULE																
DOOR									FRAME		FRAME	FRAME	FRAME	HARDWARE SET		COMMENTS
NO.	PAIR	WIDTH	HEIGHT	THICKNESS	TYPE	MATERIAL	FIRE RATING	UNDERCUT	TYPE	MATERIAL	HEAD	JAMB	SILL			
00-BASEMENT																
B01/A		3'-4"	6'-7"	1 3/4"	D8	STEEL	-	-	F4	STEEL	PER MFGR	PER MFGR		-		SECURITY VAULT DOOR WITH PASS-THRU DAYGATE
B13/A		3'-0"	7'-0"	1 3/4"	D1	WOOD	-	-	F1	HM	H1	J1		-		TEMPORARY DOOR
B14/A	PAIR	3'-0"	7'-10"	1 3/4"	D6	ALUM	-	-		ALUM				17		AUTO OPERATOR
B14/B	PAIR	3'-0"	7'-10"	1 3/4"	D6	ALUM	-	-						18		AUTO OPERATOR
B14/C		3'-0"	7'-0"	1 3/4"	D1	HM	-	-	F1	HM	H1		J1	6		
B14/D		3'-0"	7'-2"	1 3/4"	D1	HM	-	-		HM				18		
B14/E		8'-0"	7'-4"	1"	D9	STEEL	-	-	MFGR.	STEEL				1		INSULATED, SEE ENLARGED PLAN FOR DETAILS
B14/F	PAIR	3'-0"	7'-0"	1 3/4"	D1	HM	-	-	F1	HM	H1	J1		1		
B14/G	PAIR	3'-0"	7'-10"	1 3/4"	D6	ALUM	-	-		ALUM			J1	17		AUTO OPERATOR
B14/H	PAIR	3'-0"	7'-10"	1 3/4"	D6	ALUM	-	-		ALUM				16		AUTO OPERATOR
01-FIRST FLOOR																
100/A		3'-0"	7'-0"	1 3/4"	D1	WOOD	60 MIN.	-	F1	HM	H1	J1		6		
101/A		3'-0"	7'-0"	1 3/4"	D1	WOOD	-	-	F1	HM	H1	J1		7		
102/A	PAIR	3'-0"	7'-0"	1 3/4"	D2	WOOD	-	-	F1	HM	H1	J1		19		
02-SECOND FLOOR																
202/A		3'-0"	7'-0"	1 3/4"	D3	WOOD	-	-	F3	HM	H1	J1		11		
203/A		3'-0"	7'-0"	1 3/4"	D1	WOOD	-	-	F1	HM	H1	J1		7		
204/A		3'-0"	7'-0"	1 3/4"	D1	WOOD	-	-	F1	HM	H1	J1		6		
205/A		3'-0"	7'-0"	1 3/4"	D1	WOOD	-	-	F1	HM	H1	J1		9		
206/A		3'-0"	7'-0"	2"	D10	ALUM	-	-	T2	ALUM	H2	J2		11		
208/A		3'-0"	7'-0"	1 3/4"	D1	WOOD	-	3/4"	F1	HM	H1	J1		13		
209/A		3'-0"	7'-0"	1 3/4"	D1	WOOD	-	-	F1	HM	H1	J1		7		
210/A		3'-0"	7'-0"	1 3/4"	D1	WOOD	-	-	F1	HM	H1	J1		7		
211/A		3'-0"	7'-0"	1 3/4"	D1	WOOD	-	-	F1	HM	H1	J1		7		
213/A		3'-0"	7'-0"	1 3/4"	D1	WOOD	-	-	F1	HM	H1	J1		7		
214/A		3'-0"	7'-0"	1 3/4"	D1	WOOD	-	-	F1	HM	H1	J1		7		
215/A		3'-0"	7'-0"	1 3/4"	D1	WOOD	-	3/4"	F1	HM	H1	J1		13		
216/A		2'-6"	7'-0"	1 3/4"	D3	WOOD	-	-	F1	HM	H1	J1		9		
217/A		3'-0"	7'-0"	1 3/4"	D1	WOOD	-	-	F1	HM	H1	J1		7		
217/B		2'-0"	7'-0"	1 3/4"	D1	WOOD	-	-	F1	HM	H1	J1		5		
218/A		3'-0"	7'-0"	1 3/4"	D1	WOOD	-	-	F1	HM	H1	J1		7		
219/A		3'-0"	7'-0"	1 3/4"	D1	WOOD	-	-	F1	HM	H1	J1		7		
220/A		3'-0"	7'-0"	1 3/4"	D1	WOOD	-	-	F1	HM	H1	J1		5		
221/A	PAIR	3'-0"	7'-0"	1 3/4"	D4	WOOD	-	-	F1	HM	H1	J1		2		
222/A		3'-0"	7'-0"	1 3/4"	D1	WOOD	-	-	F1	HM	H1	J1		5		
223/A		3'-0"	7'-0"	1 3/4"	D1	WOOD	-	-	F1	HM	H1	J1		7		
224/A		3'-0"	7'-0"	1 3/4"	D3	WOOD	-	-	F1	HM	H1	J1		10		
226/A		3'-0"	7'-0"	2"	D10	ALUM	-	-	T3	ALUM	H2	J2,J3		3		
227/A		3'-0"	7'-0"	1 3/4"	D1	WOOD	-	3/4"	F1	HM	H1	J1		14		
228/A		3'-0"	7'-0"	1 3/4"	D1	WOOD	-	3/4"	F1	HM	H1	J1		14		
229/A		3'-0"	7'-0"	2"	D10	ALUM	-	-	S1	ALUM	H2	J2,J3		10		
230/A		3'-0"	7'-0"	1 3/4"	D1	WOOD	-	-	F1	HM	H1	J1		7		
231/A		3'-0"	7'-0"	1 3/4"	D3	WOOD	-	-	F3	HM	H1	J1		12		
231/B		3'-0"	7'-0"	1 3/4"	D1	WOOD	-	-	F1	HM	H1	J1		7		
232/A		3'-0"	7'-0"	2"	D10	ALUM	-	-	T1 sim.	ALUM	H2	J2,J3		10		
234/A		3'-0"	7'-0"	1 3/4"	D1	WOOD	-	3/4"	F1	HM	H1	J1		6		
235/A		3'-0"	7'-0"	1 3/4"	D1	WOOD	-	3/4"	F1	HM	H1	J1		14		
236/A		3'-0"	7'-0"	1 3/4"	D1	WOOD	-	3/4"	F1	HM	H1	J1		14		
238/A		3'-0"	7'-0"	1 3/4"	D3	WOOD	-	-	F1	HM	H1	J1		10		
240/A		3'-0"	7'-0"	1 3/4"	D1	WOOD	-	-	F1	HM	H1	J1		7		
242/A		3'-0"	7'-0"	1 3/4"	D3	WOOD	-	-	F1	HM	H1	J1		9		
243/A		3'-0"	7'-0"	1 3/4"	D1	WOOD	-	-	F1	HM	H1	J1		7		
245/A		3'-0"	7'-0"	1 3/4"	D1	WOOD	-	-	F1	HM	H1	J1		7		
246/A		3'-0"	7'-0"	1 3/4"	D1	WOOD	-	-	F1	HM	H1	J1		7		
247/A		3'-0"	7'-0"	1 3/4"	D1	WOOD	-	-	F1	HM	H1	J1		7		
249/A		3'-0"	7'-0"	1 3/4"	D1	WOOD	-	-	F1	HM	H1	J1		7		
250/A	PAIR	3'-0"	7'-0"	1 3/4"	D4	WOOD	-	-	F1	HM	H1	J1		2		
251/A		3'-0"	7'-0"	1 3/4"	D3	WOOD	-	-	F1	HM	H1	J1		5		
252/A		3'-0"	7'-0"	1 3/4"	D1	WOOD	-	-	F1	HM	H1	J1		7		
254/A		3'-0"	7'-0"	2"	D10	ALUM	-	-	T4	ALUM	H2	J2,J3		11		
255/A		3'-0"	7'-0"	1 3/4"	D3	WOOD	-	-	F1	HM	H1	J1		10		
256/A		3'-0"	7'-0"	1 3/4"	D1	WOOD	-	3/4"	F1	HM	H1	J1		5		
C3/A	PAIR	3'-0"	7'-0"	1 3/4"	D4	WOOD	-	-	F1	HM	H1	J1		2		
C4/A		3'-6"	7'-0"	1 3/4"	D7	WOOD	-	-	F2	HM	H1	J1		11		
C8/A		3'-6"	7'-0"	1 3/4"	D7	WOOD	-	-	F2	HM	H1	J1		11		
C9/A	PAIR	3'-0"	7'-0"	1 3/4"	D4	WOOD	-	-	F1	HM	H1	J1		2		



5 DOOR INSTALLATION DETAIL

1/4" = 1'-0"

FULLY SPRINKLERED BID DOCUMENTS

Revisions:		Date		CONSULTANTS:		ARCHITECTS/ENGINEERS:		Drawing Title DOOR SCHEDULE & DETAILS		Project Title BUILDING 9 - SECOND FLOOR RENOVATION		Project Number 542-13-105		Office of Construction and Facilities Management	
								Approved: Project Director		Location: 1400 Blackhorse Hill Road Coatesville, PA 19320		Building Number 9		Drawing Number A601	
										Date 05 / 12 / 14		Checked BB		Drawn SB	
												Dwg. 56 of 125		Department of Veterans Affairs	