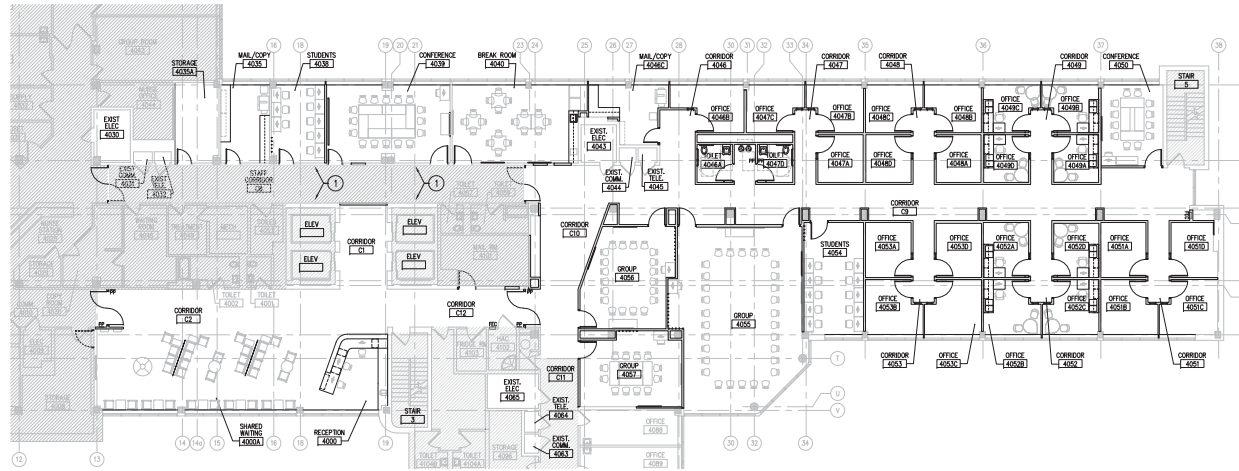




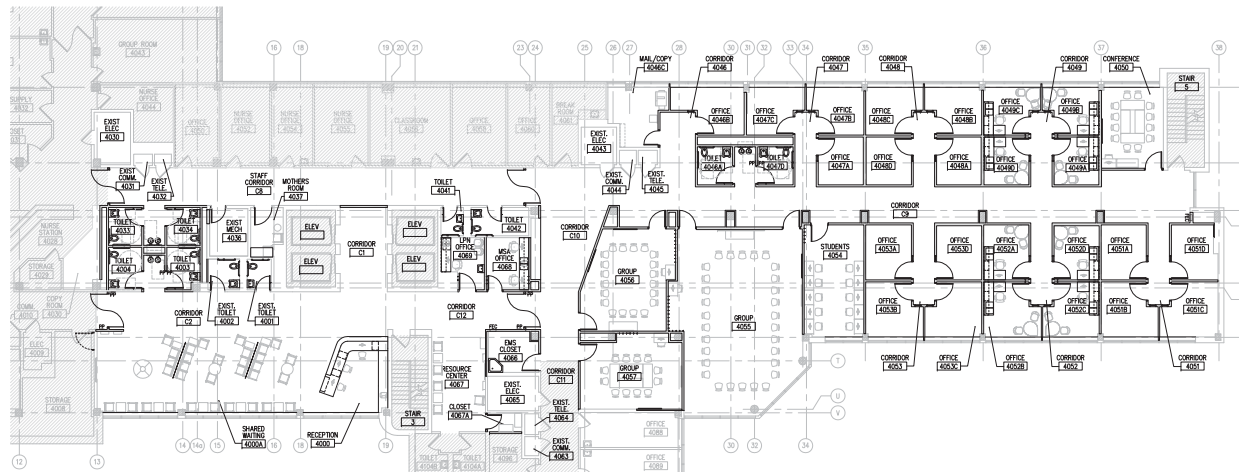
**Office of
Construction
and Facilities
Management**

ALTERNATE KEY NOTES

- EXISTING CORRIDOR DOORS TO BE REMOVED. PATCH AND REPAIR WALL.

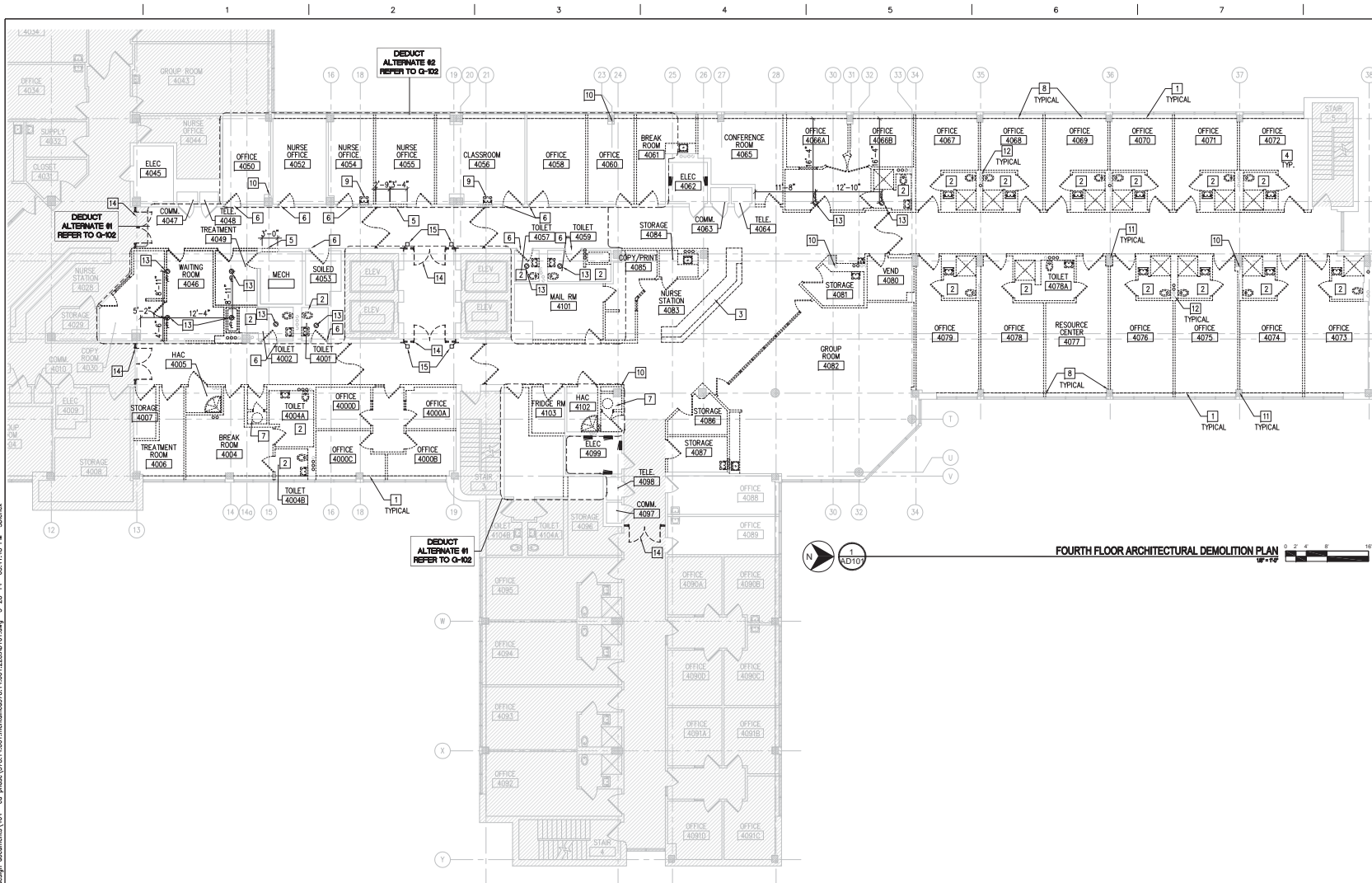


DEDUCT ALTERNATE #1 - IF ACCEPTED
SHEET 10

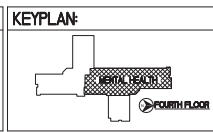


DEDUCT ALTERNATE #2 - IF ACCEPTED
SHEET 10

<p>ISSUED FOR BID 4/4/2014</p> <p>REV CD SUBMISSION 3/3/2014</p> <p>DESIGN DEVELOPMENT SUBMISSION 1/8/2014</p> <p>SCHEMATIC DESIGN SUBMISSION 10/1/2013</p> <p>DATE</p>	<p>KEYPLAN:</p> <p>FOURTH FLOOR</p>	<p>ENGINEERS + CONSULTANTS:</p> <p>SEPSTEIN</p> <p>Architecture Interior Design Engineering Construction</p> <p>880 N. LaSalle Street Chicago, IL 60610-3999 773.644.9100 www.sepstein.com</p>	<p>ARCHITECT + ENGINEERS:</p> <p>Bancroft</p> <p>700 North Dearborn Street Chicago, IL 60610-3999 773.644.9100 www.bancroft.com</p>	<p>Drawing Title DEDUCT ALTERNATE 1 + 2 PLANS</p> <p>Approved Project Director</p> <p>VAPACOS PLANNING AND ENGINEERING</p>	<p>Project Title Edward Hines, Jr. VA Hospital Renovate Building 228 4th Floor, Mental Health</p> <p>Location HOMER, IL</p> <p>Date 4/4/2014</p> <p>Checked DM</p> <p>Drawn BD</p>	<p>Project Number 10270-14-001</p> <p>Building Number 228</p> <p>Drawing Number G-103</p>	<p>Office of Construction and Facilities Management</p>
---	-------------------------------------	---	--	--	--	---	---



ISSUED FOR BID	4/4/2004
60% CD SUBMISSION	3/3/2004
DESIGN DEVELOPMENT SUBMISSION	1/8/2004
SCHEMATIC DESIGN SUBMISSION	10/1/2003
Revised	Date



ENGINEERS + CONSULTANTS:

SEPSTEIN

Architectural
Structural
Engineering
Construction

880 N. Fulton Street
Chicago, IL 60610-1000
773.661.9100
www.sepstein.com

ARCHITECT + ENGINEERS:

Bancroft

700 Michigan Street, Suite 100
Chicago, IL 60611
773.661.9100
www.bancroft.com

Drawing Title:
FOURTH FLOOR ARCHITECTURAL DEMOLITION PLAN

Approved Project Director:
VAPACOS PLANNING AND ENGINEERING

Project Title:
Edward Hines, Jr. VA Hospital
Renovate Building 228
4th Floor, Mental Health

Location:
Ft. Belvoir, L

Date:
4/4/2004

Checked:
DM

Drawn:
BD

Project Number:
9070-10-001

Building Number:
228

Drawing Number:
AD-101

Office of Construction and Facilities Management

