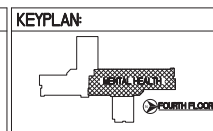
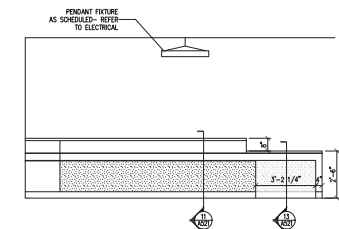
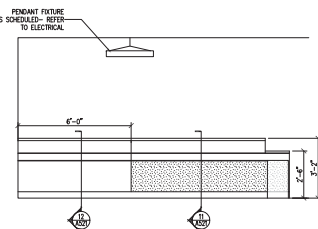
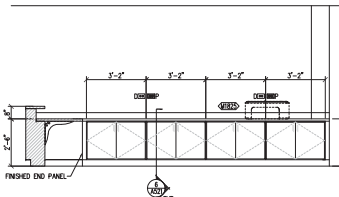
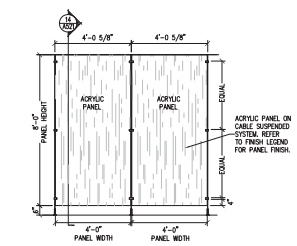
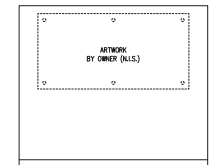
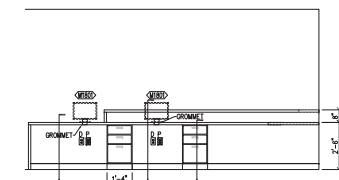
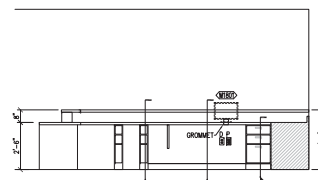
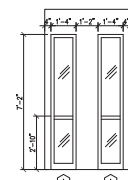
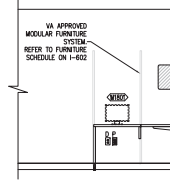
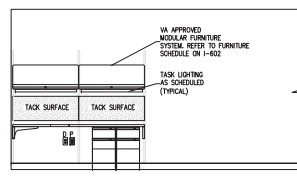
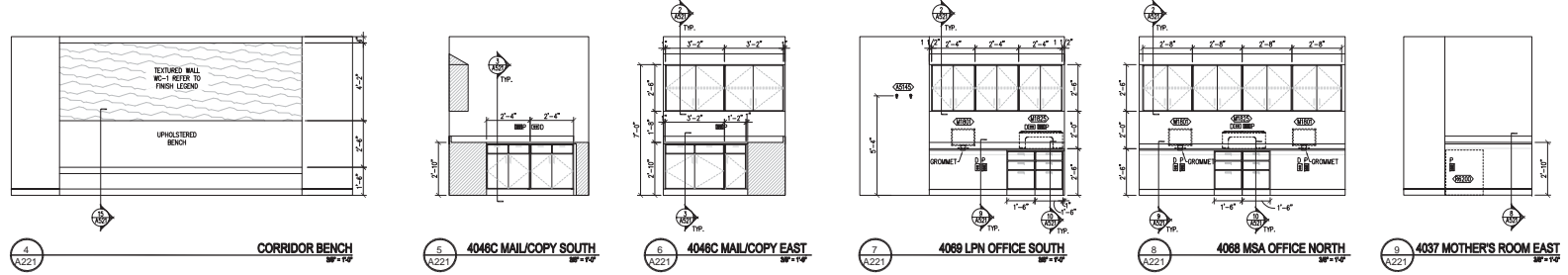
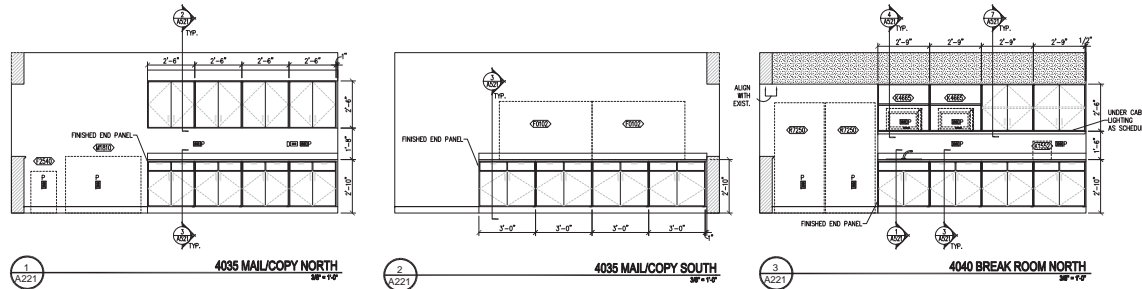


ELEVATION GENERAL NOTES

1. ALL CABINETS SHOULD BE LOCKABLE.

INTERIOR ELEVATION LEGEND

- | | |
|--------------------|----------------------------------|
| ELECTRICAL OUTLETS | WINDOW TAG |
| DATA & PHONE | DOOR TAG |
| LIGHT SWITCHES | EQUIPMENT TAG
SEE SHEET 1-602 |



ENGINEERS + CONSULTANTS
SEPSTEIN
Architecture
Interior
Engineering
Construction
880 VL Pulte Street
Chicago, IL 60614-3889
T 312.661.9100
www.sepsteinllc.com

ARCHITECT + ENGINEERS
Bancroft
BANCROFT ARCHITECTS + ENGINEERS
700 Nicholas Blvd. Suite 100
Oak Brook, IL 60452
T 847.491.1000 Fax 847.491.1003

Drawing Title
INTERIOR ELEVATIONS
Approved Project Director
VAPACOS PLANNING AND ENGINEERING

Project Title
Edward Hines, Jr. VA Hospital
Renovate Building 228
4th Floor, Mental Health
Location
FARMER, L.

Project Number
9079-14-001
Building Number
228
Drawing Number
A-221

Office of
Construction
and Facilities
Management

ISSUED FOR BID
DESIGN DEVELOPMENT SUBMISSION
SCHEMATIC DESIGN SUBMISSION
4/4/2014
3/3/2014
1/3/2014
10/1/2013
Date

VA FORM 08-6231

ISSUED FOR BID- NOT FOR CONSTRUCTION



Project Title Edward Hines, Jr. VA Hospital Renovate Building 228 4th Floor, Mental Health		Project Number 0078-14-001		Office of Construction and Facilities Management
		Building Number 228		
Location 19425, L		Drawing Number A-521		
Date 4/4/2014	Checked DM	Drawn MD		