



MOUNTING HEIGHTS FOR ELECTRICAL DEVICES

DEVICE	MOUNTING HEIGHTS
LIGHT SWITCHES, WALL MOUNTED OCCUPANCY SENSORS	4" TO CENTERLINE OF BOX
DISCONNECT SWITCHES, MOTOR STARTERS, MOTOR PUSH BUTTONS	EXCEPTION: 44" MAXIMUM TO TOP ABOVE COUNTERS WHICH ARE 30"-25"
WALL MOUNTED EXIT SIGNS	60" TO CENTERLINE
CEILING MOUNTED EXIT SIGNS	80" TO CENTERLINE OF SIGN OR CENTERED IN WALL AREA BETWEEN TOP OF DOOR AND CEILING.
RECEPIELES	80" TO BOTTOM INTUNE.
	16" TO BOTTOM OF BOX.
	EXCEPTION: 44" MAXIMUM TO TOP ABOVE COUNTERS WHICH ARE 30"-25"
SPECIAL OUTLETS OR RECEPTALS	16" TO BOTTOM OF BOX OR AS NOTED ON DRAWINGS.
	EXCEPTION: 44" MAXIMUM TO TOP ABOVE COUNTERS WHICH ARE 30"-25"
FLUORO OR WIREROD	AS NOTED ON DRAWINGS.
CLOCK OUTLETS	12" CEILING TO CENTERLINE OR 7'-0" TO CENTERLINE IF CEILING IS OVER 8'-0"
DAILY/COMMUNICATION OR TELEPHONE OUTLETS	16" TO BOTTOM OF BOX.
TELEPHONE OUTLETS - WALL TYPE	54" TO HALL CENTER (NON-ACCESSIBLE).
PAY TYPE TELEPHONE OUTLETS	44" TO HIGHEST OPERABLE PART (SIDE OR FORWARD ACCESS).
THE ALARM MANUAL FULL STATIONS	44" MAXIMUM TO CON. SUT.
THE ALARM AUDIBLE ONLY DEVICES	40" TO CENTERLINE OF BOX - NOT MORE THAN 5'-0" FROM EXIT.
THE ALARM VISUAL ONLY DEVICES OR A COMBINATION OF ALARM VISUAL AND VISUAL DEVICES	NOT LESS THAN 80" TO TOP OR 6" BELOW CEILING, WITH 18" VIEW OF DEVICES.
WALL MOUNTED REMOTE INDICATOR LIGHT	80" TO TOP OF DEVICE OR NOT MORE THAN 18" FROM BOTTOM OF DEVICE.
AREA OF SWITCH TELEPHONE	80" TO CENTERLINE OF DEVICE OR 6" BELOW CEILING, WHICHEVER IS LOWER.
CALL OR AT SWITCH WITH PULL CHAIN TO FLOOR	SAME AS TELEPHONE - ACCESSIBLE.
CARD READER	44" TO CENTERLINE OF BOX MINIMUM (OUTLETS, LOCATED OUT OF SPINNY AREA).
INTERCOM STATION	48" TO HIGHEST OPERABLE PART (SIDE OR FORWARD ACCESS).
SOUND SYSTEM VOLUME CONTROL	54" TO HIGHEST OPERABLE PART (SIDE ACCESS).
MICROPHONE OUTLETS	54" TO HIGHEST OPERABLE PART (SIDE ACCESS).
TEMPERATURES	48" TO HIGHEST OPERABLE PART (SIDE OR FORWARD ACCESS).
TEMPERATURE/HUMIDITY SENSORS	54" TO HIGHEST OPERABLE PART (SIDE ACCESS).
	60" TO CENTER LINE OF BOX.

1. ALL DIMENSIONS ARE CONSIDERED FROM FINISHED FLOOR AND, UNLESS NOTED OTHERWISE, SHALL NOT VARY. RAISED FLOORS SHALL BE CONSIDERED FINISHED FLOOR.
2. ALL DIMENSIONS SHALL BE COORDINATED WITH ARCHITECTURAL DETAILS AND MAY BE ADJUSTED TO CONFORM WITH ARCHITECTURAL REQUIREMENTS AS LONG AS NO CODE RESTRICTION IS VIOLATED.
3. OUTLETS INSTALLED LOWER THAN 15" AFF (FORWARD REACH) AND 9" AFF (SIDE REACH) ARE IN

.....

1. EXIT SIGNS SHALL NOT BE INSTALLED IN A MANNER THAT THE SIGN WILL BLOCK FIRE ALARM VISUAL DEVICES.
2. FOR LIGHTING FIXTURES MOUNTING HEIGHTS SEE SCHEDULE AND DRAWINGS.

[illegible]

KEYPLANE



ENGINEERS + CONSULTANTS

Architecture
Interiors
Engineering
Construction

9900 W. Fullon Street
Chicago, IL 60661-1256
T 312.454.9100
www.epottingbold.com

EPSTEIN

ARCHITECT + ENGINEERS:



Drawing Title

Approved Project Director

VAPACOS PLANNING AND ENGINEERING

[illegible]

Renovate Building 228 4th Floor, Mental Health	Location HHS, IL	Date 4/4/2014	Checked M88	Drawn KA
---	---------------------	------------------	----------------	-------------

Office of



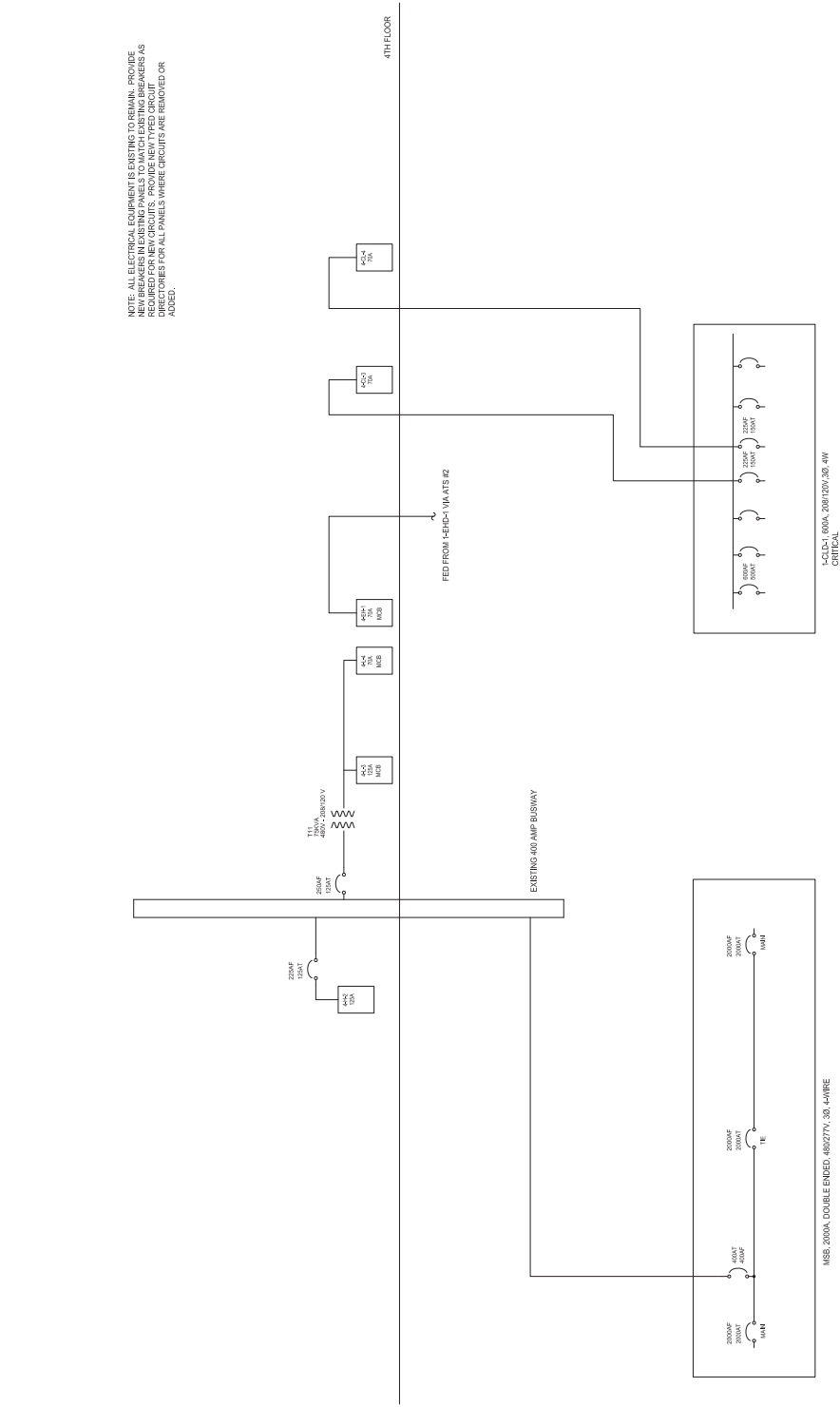
ELECTRICAL GENERAL NOTES

- [illegible]

- [illegible]

GENERAL NOTES - DEMOLITION

- [illegible]



EXISTING ONE-LINE DIAGRAM

1ST FLOOR

					985/E FOR BID	04/07/2014
					985/COT SUBMISSION	03/03/14
					DESIGN DEVELOPMENT SUBMISSION	07/01/14
					Bids/quote	Data


ENGINEERS + CONSULTANTS

SEPSTEIN

Architecture
Civil Engineering
Mechanical Engineering
Construction

4900 W. Fullerton Street
Chicago, IL 60630-1099
T 312.664.0100
www.sepcorp.com


ARCHITECT + ENGINEERS:

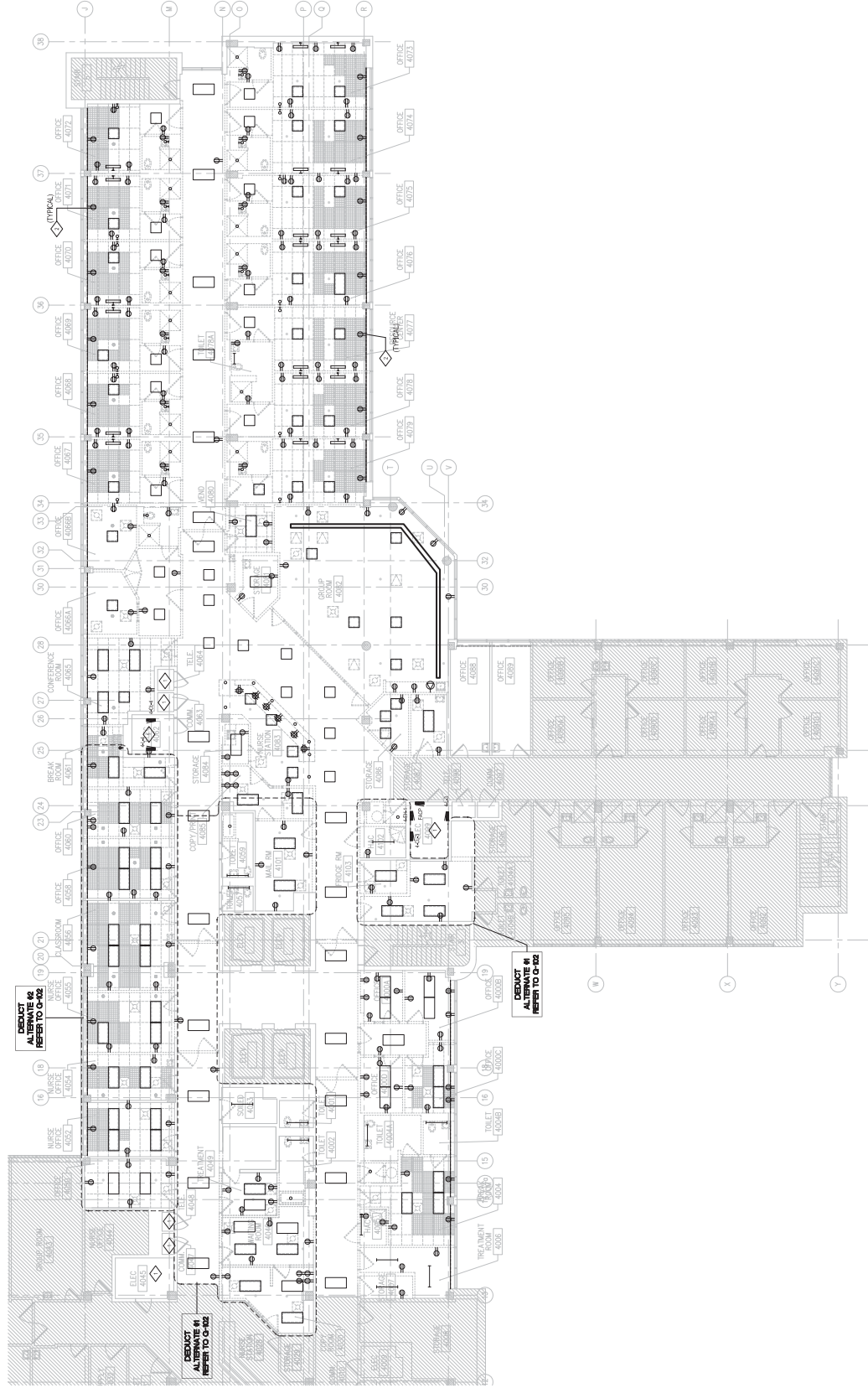
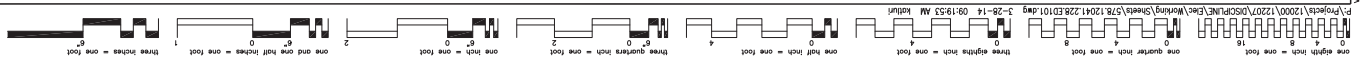
 **Bancroft**

BANCROFT ARCHITECTS + ENGINEERS

100 Newport Road, Suite 403
Billerica, MA 01821
Tel: 978/667-0007
Fax: 978/667-0008

Drawing No: ELECTRICAL EXISTING ONE-LINE DIAGRAM	Project No: Edward Hines, Jr. VA Hospital Renovate Building 228 4th Floor, Mental Health						
Approved Project Director	Location MHSB L						
VAPANCES PLANNING AND ENGINEERING	<table><tr><td>Date</td><td>Created</td><td>Drawn</td></tr><tr><td>4/4/2014</td><td>MBB</td><td>NA</td></tr></table>	Date	Created	Drawn	4/4/2014	MBB	NA
Date	Created	Drawn					
4/4/2014	MBB	NA					

Project Number 6578-14-001	Building Number 228	Drawing Number E-010	Office of Construction and Facilities Management 
-------------------------------	------------------------	-------------------------	--



GENERAL NOTES

1. ALL LIGHT FIXTURES, EXT. SIGNS, WIRING DEVICES, NURSE CALL DEVICES, TELECOM DATA LINES AND CABLES, CONDUIT AND WIRING WITHIN AREA OF REMODEL TO BE REMOVED.
2. ALL EXISTING ELECTRICAL PANELS WITHIN THE AREA OF THE PROJECT ARE TO BE REMOVED.
3. ALL EXISTING LIGHT FIXTURES WITHIN THE AREA OF THE PROJECT ARE TO BE REMOVED. THE EXISTING LIGHTING WITHIN THE ELECTRICAL CLOSETS, TELECOM CLOSETS, AND THE STAIRWAYS IS TO BE REMOVED.
4. SEE ARCHITECTURAL DRAWINGS FOR ADDITIONAL DETAIL INFORMATION.
5. CONTRACTOR SHALL REMOVE ALL CIRCUITS CONDUITS AND WIRING FOR ALL ITEMS TO BE DEMOLISHED PER GENERAL NOTE 1. BACK TO ELECTRICAL PANELS TO BE REMOVED. CONTRACTOR SHALL REMOVE ALL EXISTING ELECTRICAL PANELS WITHIN AREA OF REMODEL. SHALL BE RECONNECTED TO THE EXISTING PANELS FEEDING THESE ITEMS IF RELOCATION OF THE EXISTING CIRCUIT INTERRUPTS TO THESE DEVICES OUTSIDE THE AREA OF THIS PROJECT.
6. REMOVE ALL WALL MOUNTED FITTINGS WITHIN THE AREA OF DEMOLITION FOR THE PROJECT.

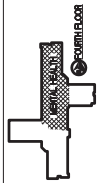
KEY NOTES

- NET NOTES**
- | | |
|---|--|
| 1 | EXISTING LIGHTING, SWITCHING, AND RECEPTACLES TO REMAIN. |
| 2 | DEMO ALL EXTERIOR WALL RECEPTACLES AND REPLACE WITH A BLANK COVER PLATE. |

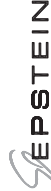
FOURTH FLOOR ELECTRICAL DEMOLITION PLAN



KEYPLANE



ENGINEERS + CONSULTANTS:



Architecture
Interiors
Engineering
Construction

600 W. Fulton Street
Chicago, IL 60661-1269
T 312.454.9100

ARCHITECT + ENGINEERS:



103	103	103
-----	-----	-----

Drawing Title
FOURTH FLOOR E

Approved Project Director

Drawing Title
FOURTH FLOOR ELECTRICAL DEMOLITION PLAN

Project Title
Edward Hines, Jr. VA Hospital
Renovate Building 228

Project Number
6578-14-001

Office of
Construction
and Facilities
Management

VA FORM 08-6231

ISSUED FOR BID - NOT FOR CONSTRUCTION

