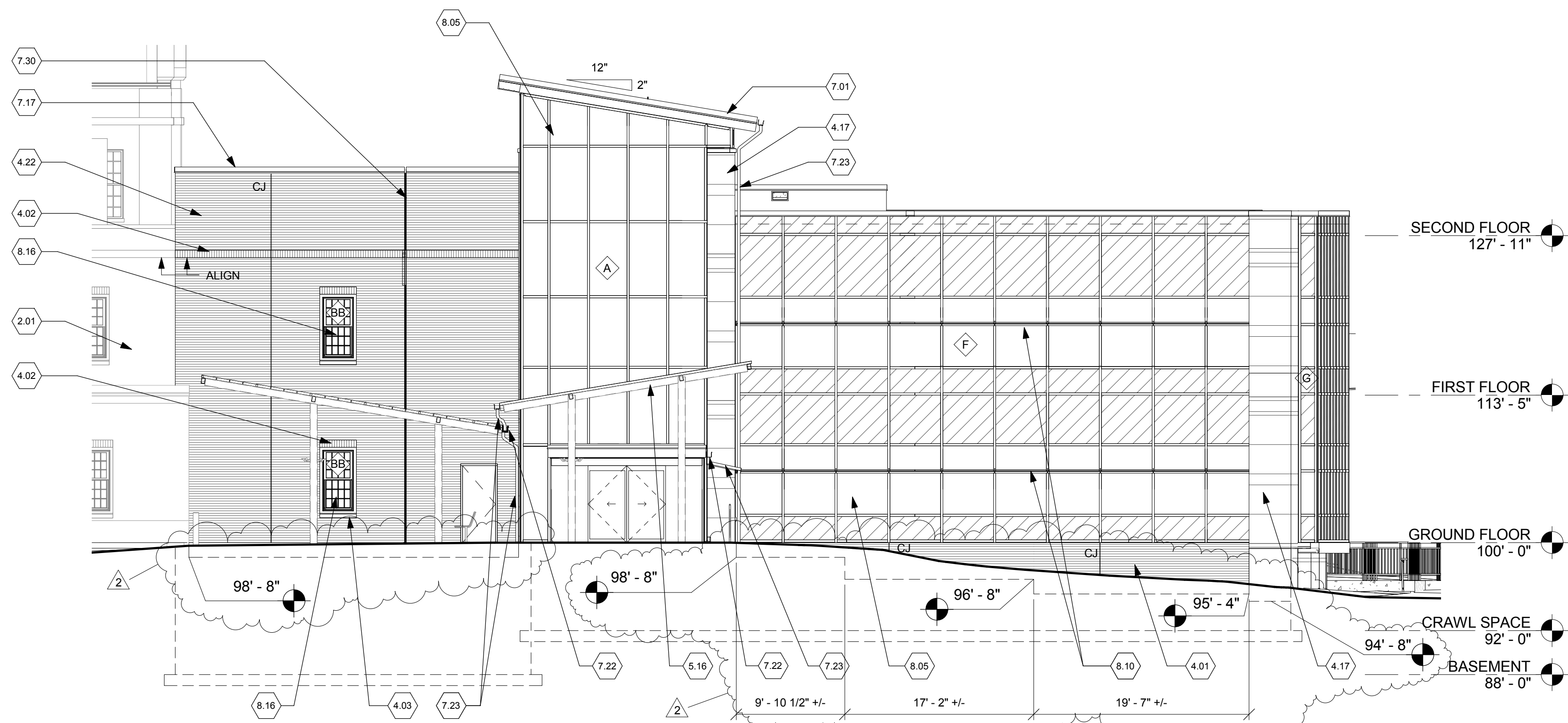
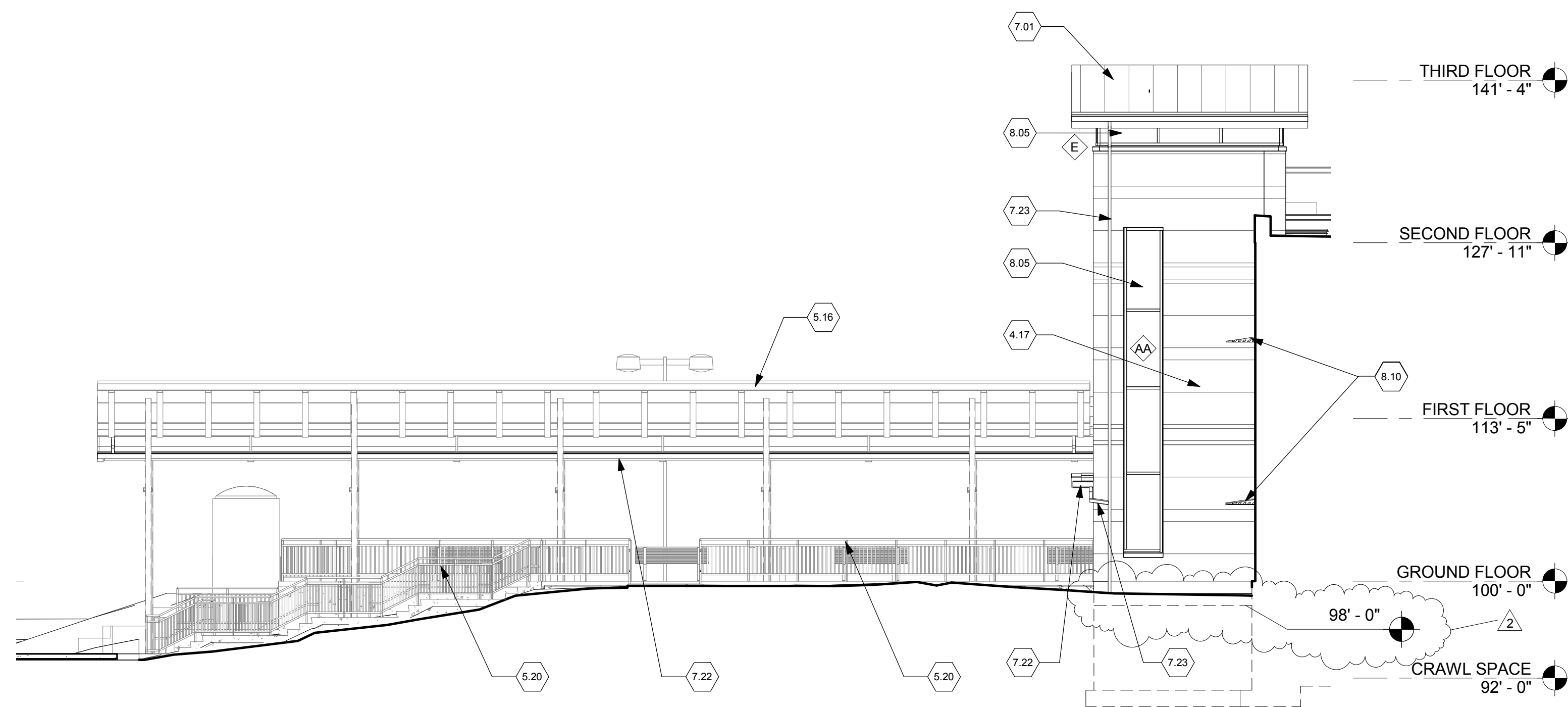


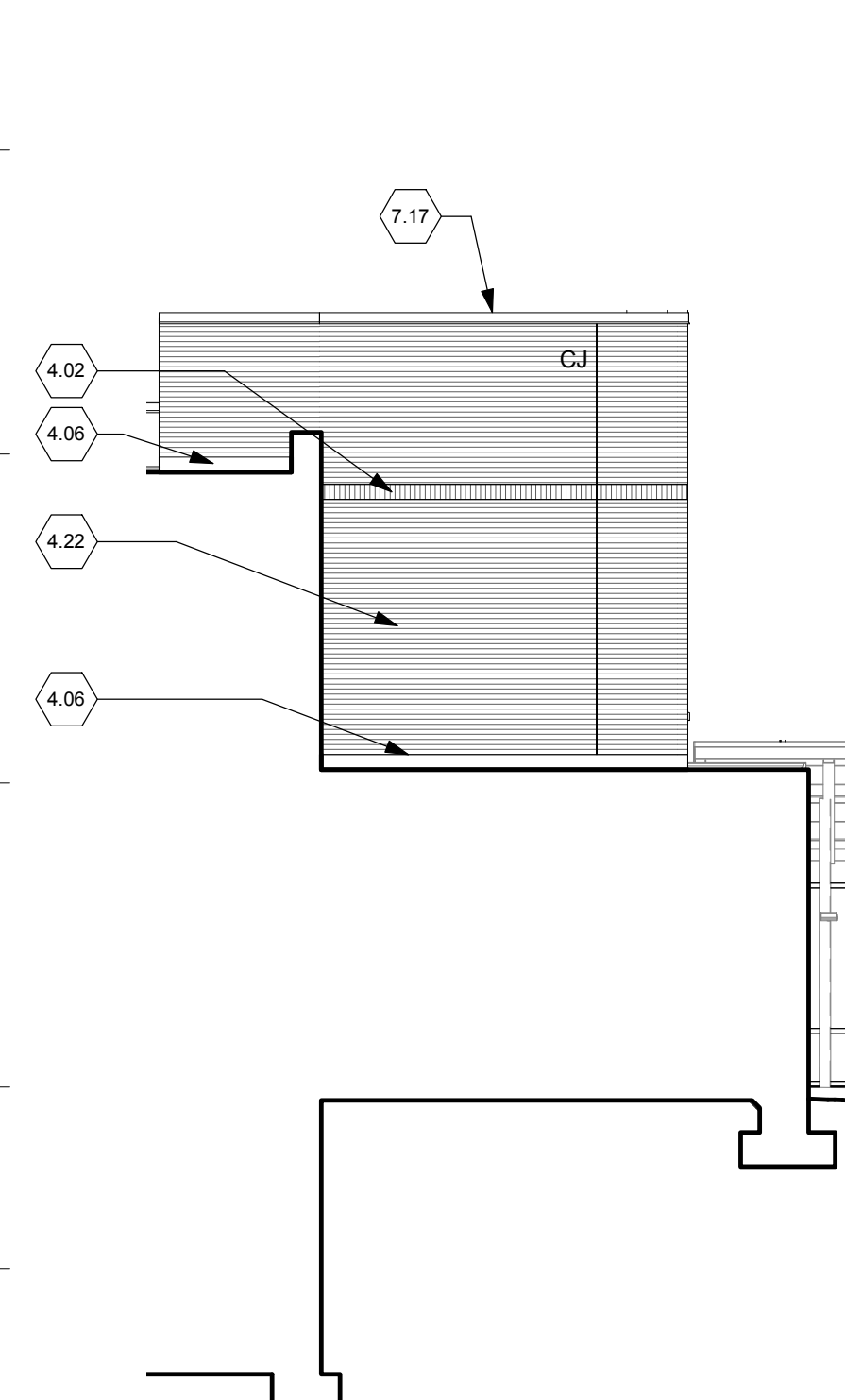
three inches = one foot  
one and one-half inches = one foot  
one inch = one foot  
three-quarters inch = one foot  
one-half inch = one foot  
three-eighths inch = one foot  
one-quarter inch = one foot  
one-eighth inch = one foot



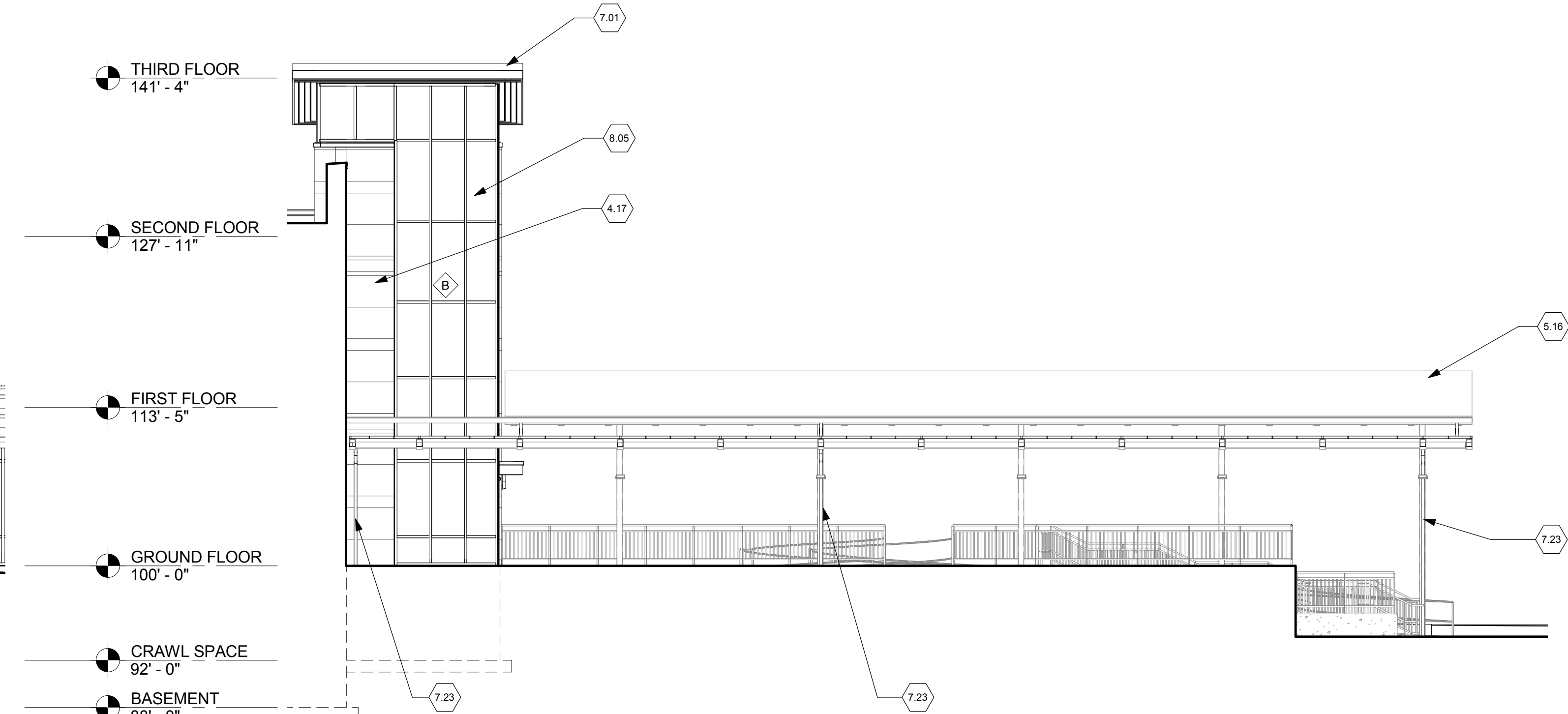
4 EAST ELEVATION  
Scale: 1/8" = 1'-0"



3 NORTH ELEVATION  
Scale: 1/8" = 1'-0"



2 SOUTH ELEVATION  
Scale: 1/8" = 1'-0"



1 SOUTH ELEVATION  
Scale: 1/8" = 1'-0"

ELEVATION NOTES

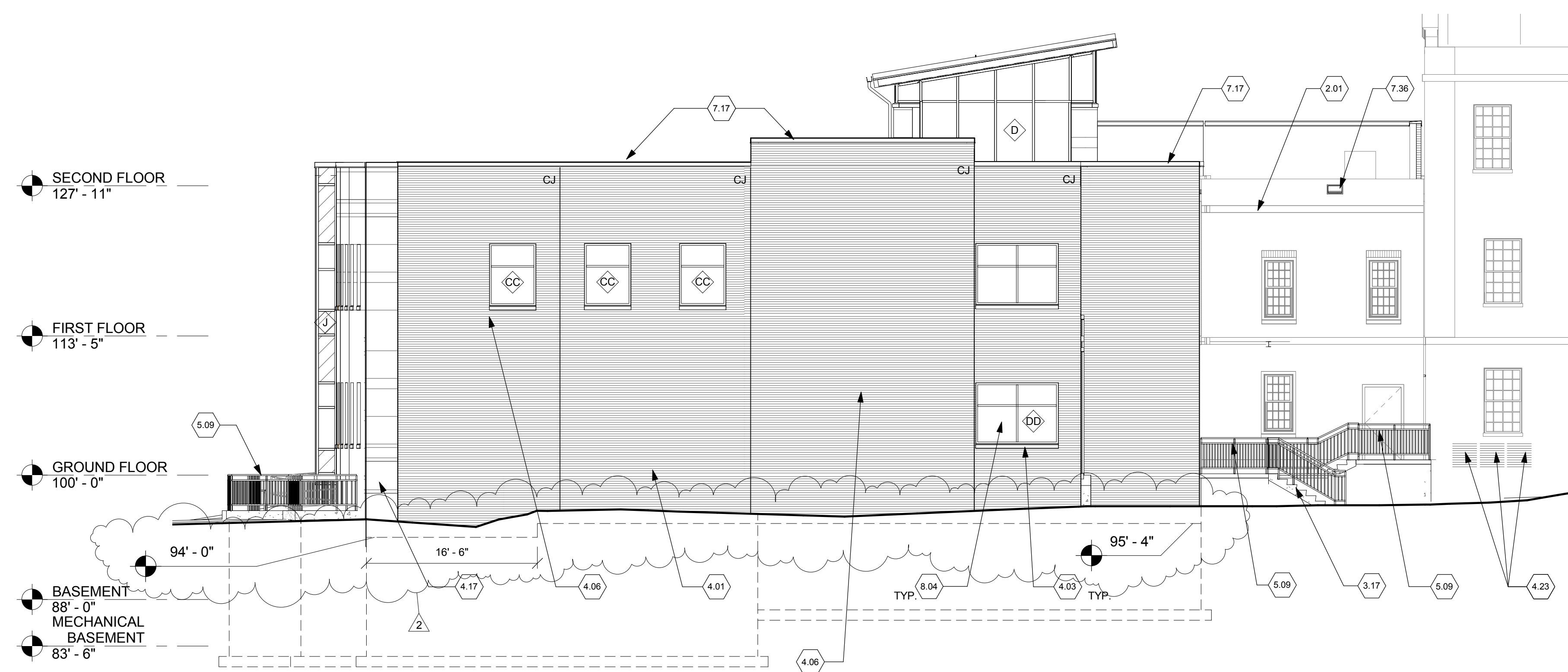
- 2.01 Existing construction.
- 4.01 Brick veneer.
- 4.02 Brick soldier course.
- 4.03 Cast stone sill
- 4.06 Thru-wall flashing.
- 4.17 Cast Stone Veneer.
- 4.22 New brick veneer to match existing construction. Provide rigid insulation. Verify air space in field.
- 5.16 Canopy and framing by others.
- 5.20 Railing by others.
- 7.01 Roof assembly: Standing seam metal roof over continuous ice and water shield over 3" minimum insulation thickness over 2" metal deck.
- 7.17 Prefinished aluminum coping.
- 7.22 Prefinished gutter.
- 7.23 Prefinished metal downspout. See Civil Drawings for connection to storm piping.
- 7.30 2" insulated building expansion joint
- 8.05 Aluminum curtainwall system.
- 8.10 Aluminum sunshade.
- 8.16 New aluminum window to match existing.

FULLY SPRINKLERED

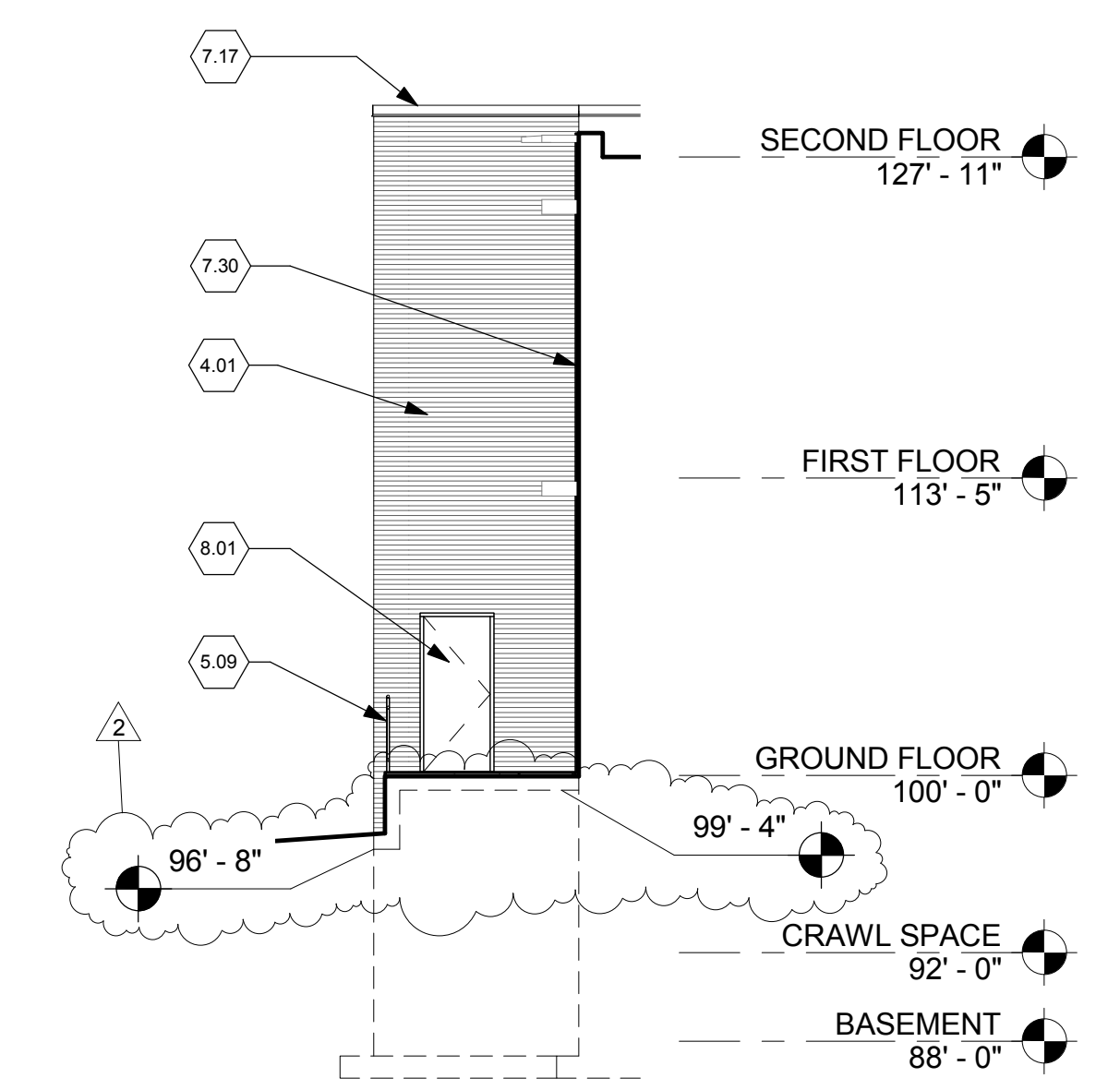
CONSULTANTS:		ARCHITECT/ENGINEERS:		Drawing Title		Project Title		Project No.		Office of Construction and Facilities Management	
		JOHN POE ARCHITECTS		EXTERIOR ELEVATIONS		CLINICAL ADDITION TO B31		VA Project No. 538-110		Department of Veterans Affairs	
		116 EAST THIRD STREET DAYTON, OHIO 45402-2190		Approved: Project Director		Chillicothe, Ohio		JPA Project No. 10017.00		Building Number 31	
		937 461 3290 PHONE 937 461 0280 FAX jpa@johnpoe.com				Date 5/23/2014		Checked: JR		Drawn: NS	
										Drawing Number A401	
										Dwg. 30 of 130	
Revisions		Bid Documents 5/23/2014									
Amendment #5 8/29/2014		Date									



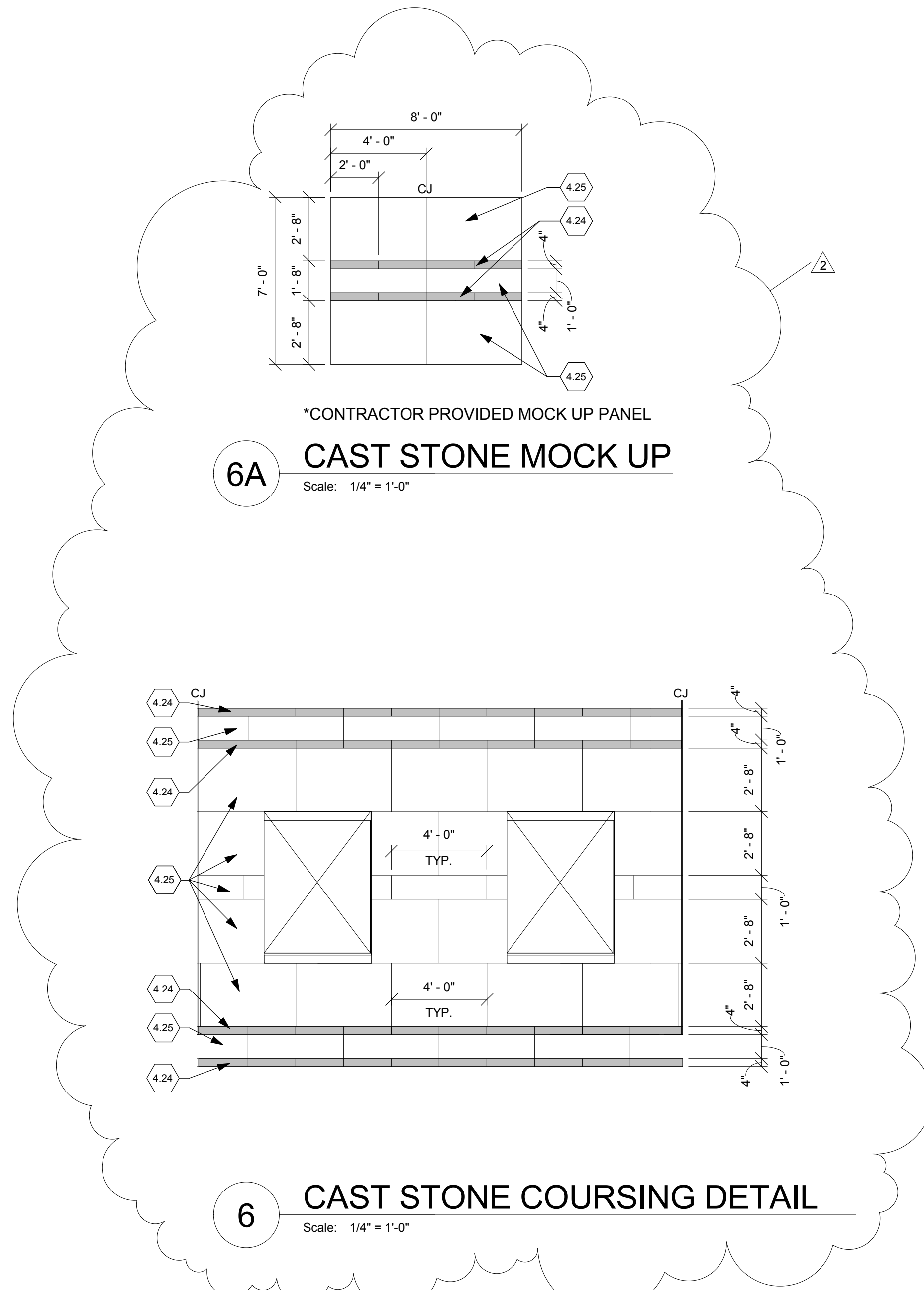
three inches = one foot  
one and one-half inches = one foot  
one inch = one foot  
three-quarters inch = one foot  
one-half inch = one foot  
three-eighths inch = one foot  
one-quarter inch = one foot  
one-eighth inch = one foot



8 WEST ELEVATION  
Scale: 1/8" = 1'-0"

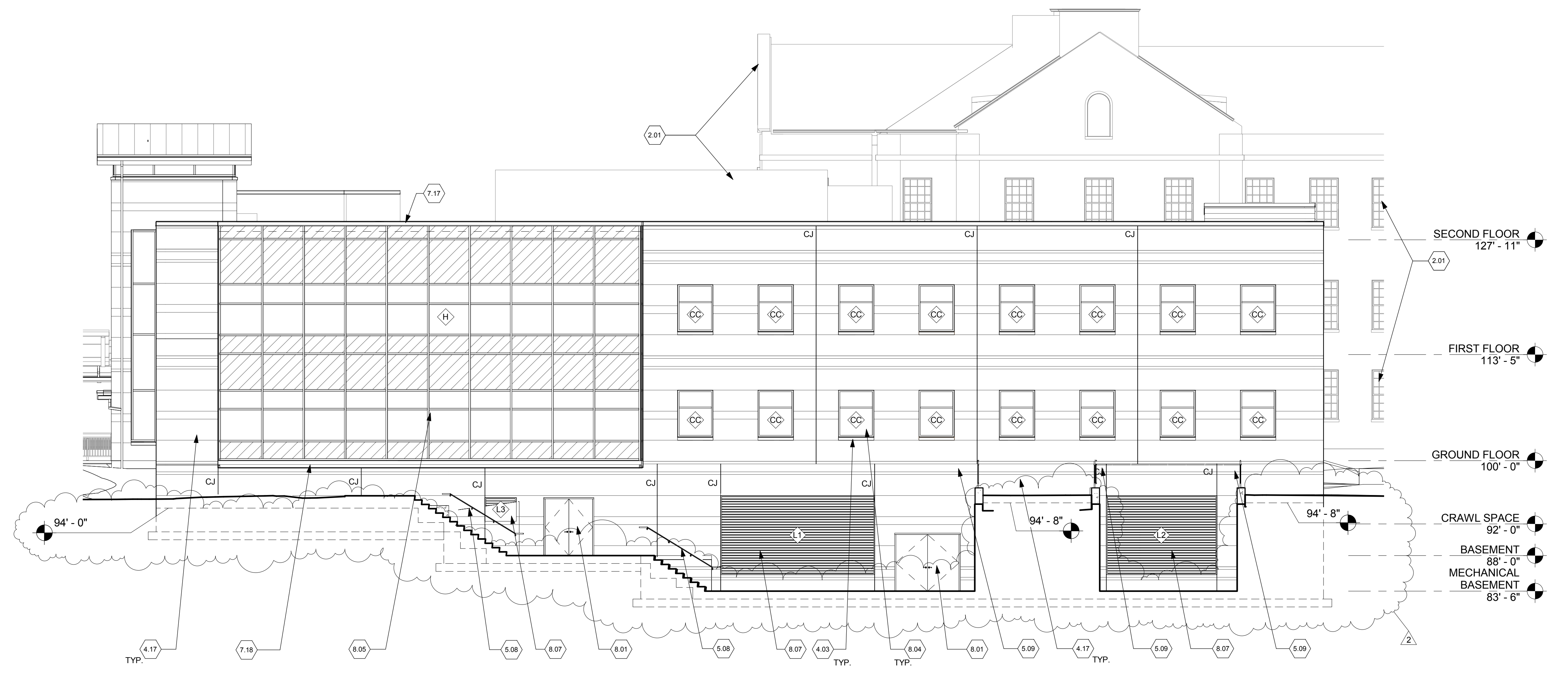


7 SOUTH ELEVATION  
Scale: 1/8" = 1'-0"



6A CAST STONE MOCK UP  
Scale: 1/4" = 1'-0"

6 CAST STONE COURSING DETAIL  
Scale: 1/4" = 1'-0"



5 NORTH ELEVATION  
Scale: 1/8" = 1'-0"

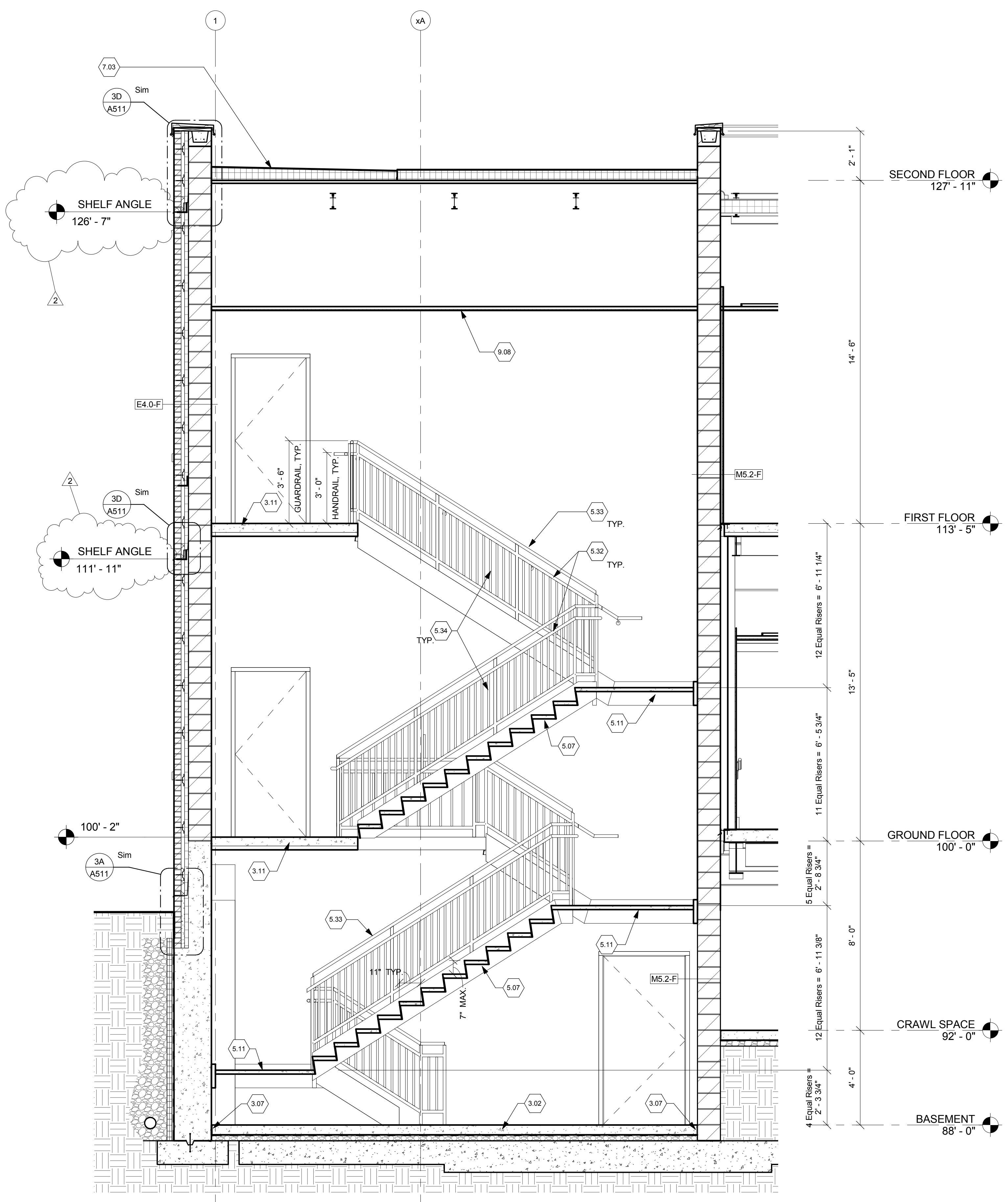
FULLY SPRINKLERED

CONSULTANTS:		ARCHITECT/ENGINEERS:		Drawing Title		Project Title		Project No.		Office of Construction and Facilities Management	
		JOHN POE ARCHITECTS		EXTERIOR ELEVATIONS		CLINICAL ADDITION TO B31		VA Project No. 538-110		Department of Veterans Affairs	
		116 EAST THIRD STREET DAYTON, OHIO 45402-2100		Approved: Project Director		Chillicothe, Ohio		JPA Project No. 10017.00		Building Number 31	
		937 461 3290 PHONE 937 461 0280 FAX jpa@johnpoe.com				Date 5/23/2014		Checked: JR		Drawn: NS	
										Drawing Number A402	
										Dwg. 31 of 130	

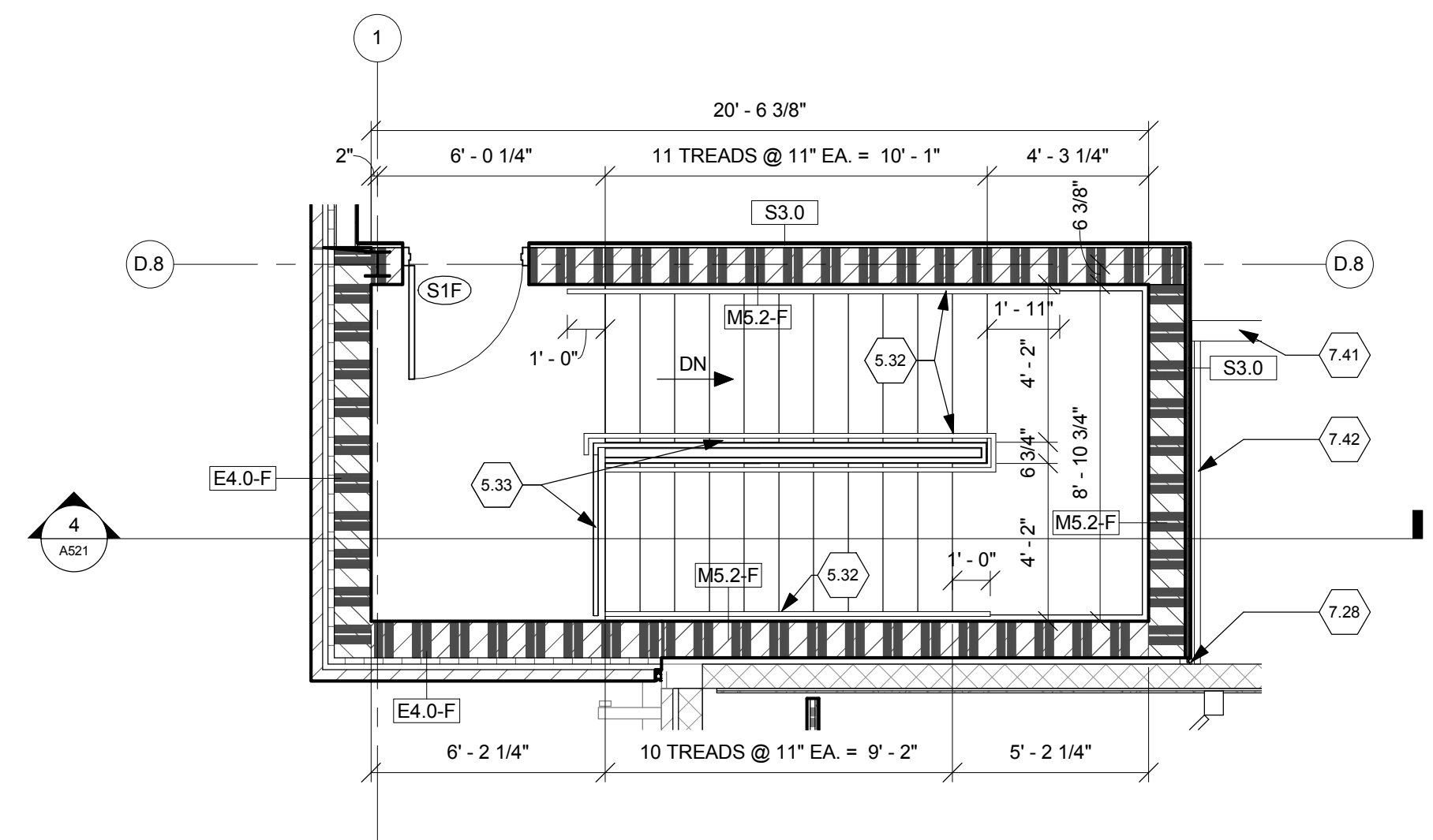
Revisions

Bid Documents	5/23/2014
Amendment #5	8/29/2014
Date	

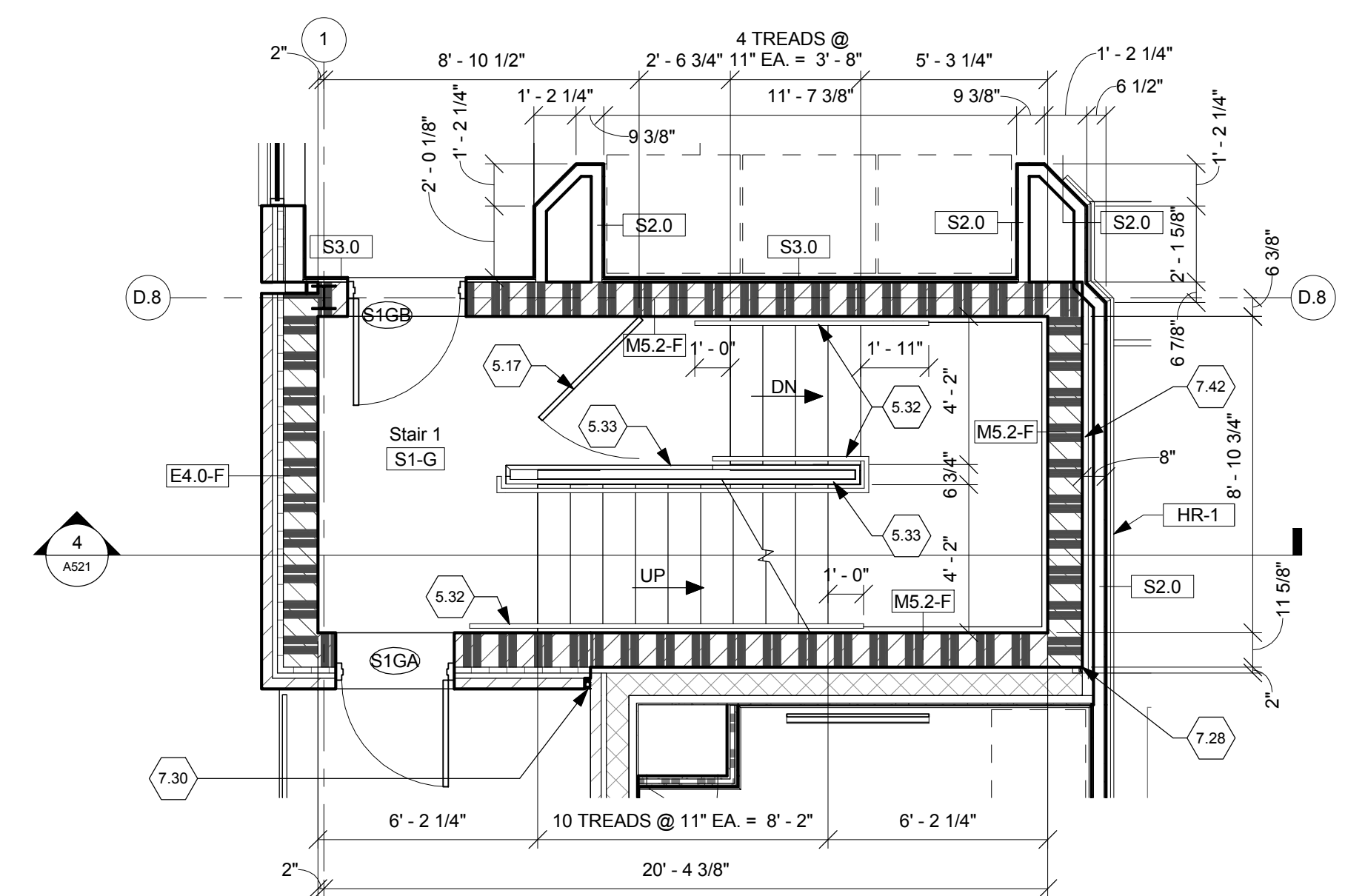
three inches = one foot  
one and one-half inches = one foot  
one inch = one foot  
three-quarters inch = one foot  
one-half inch = one foot  
three-eighths inch = one foot  
one-quarter inch = one foot  
one-eighth inch = one foot



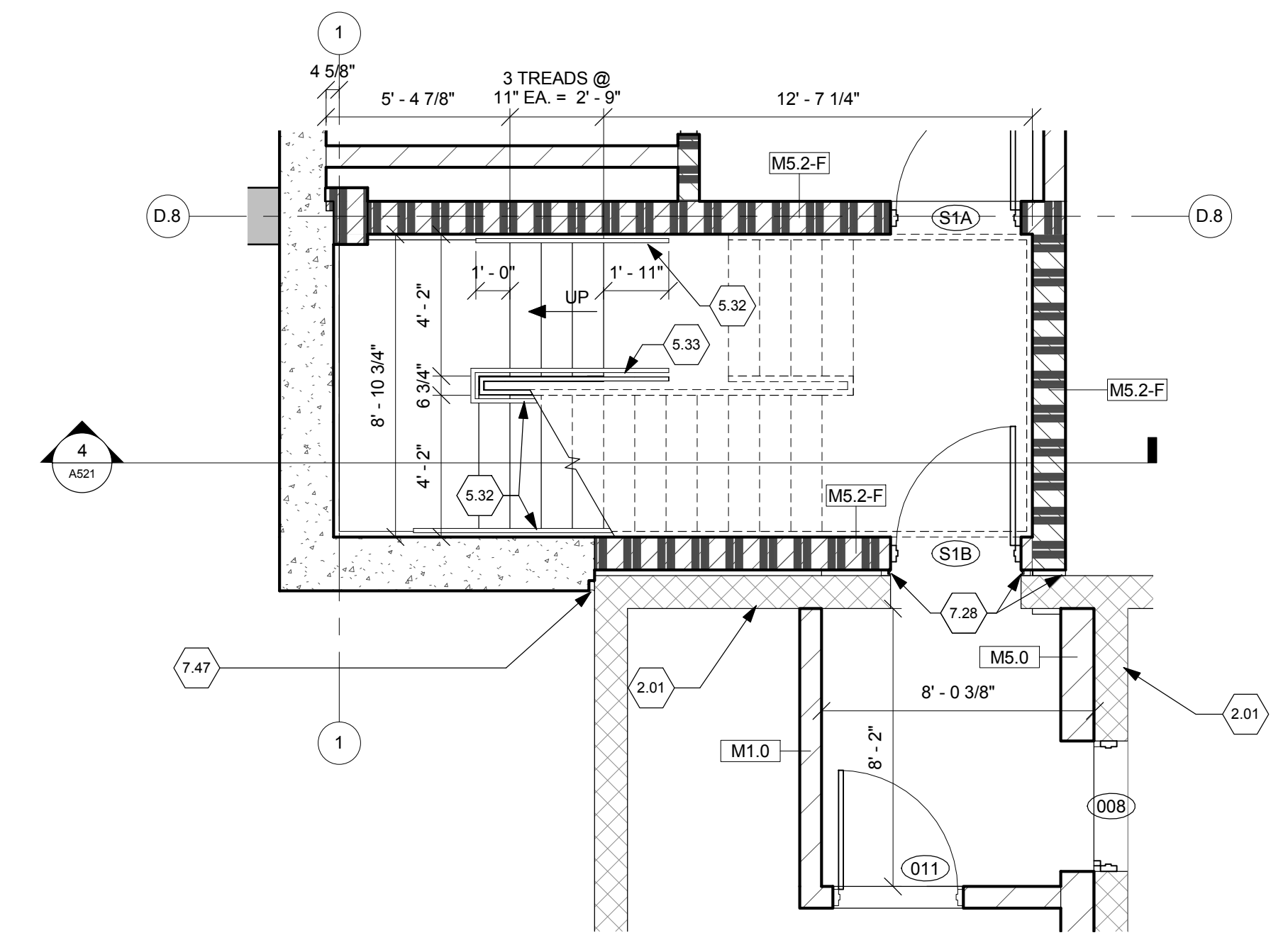
4 STAIR SECTION  
Scale: 3/8" = 1'-0"



3 STAIR PLAN - FIRST FLOOR  
Scale: 1/4" = 1'-0"



2 STAIR PLAN - GROUND FLOOR  
Scale: 1/4" = 1'-0"



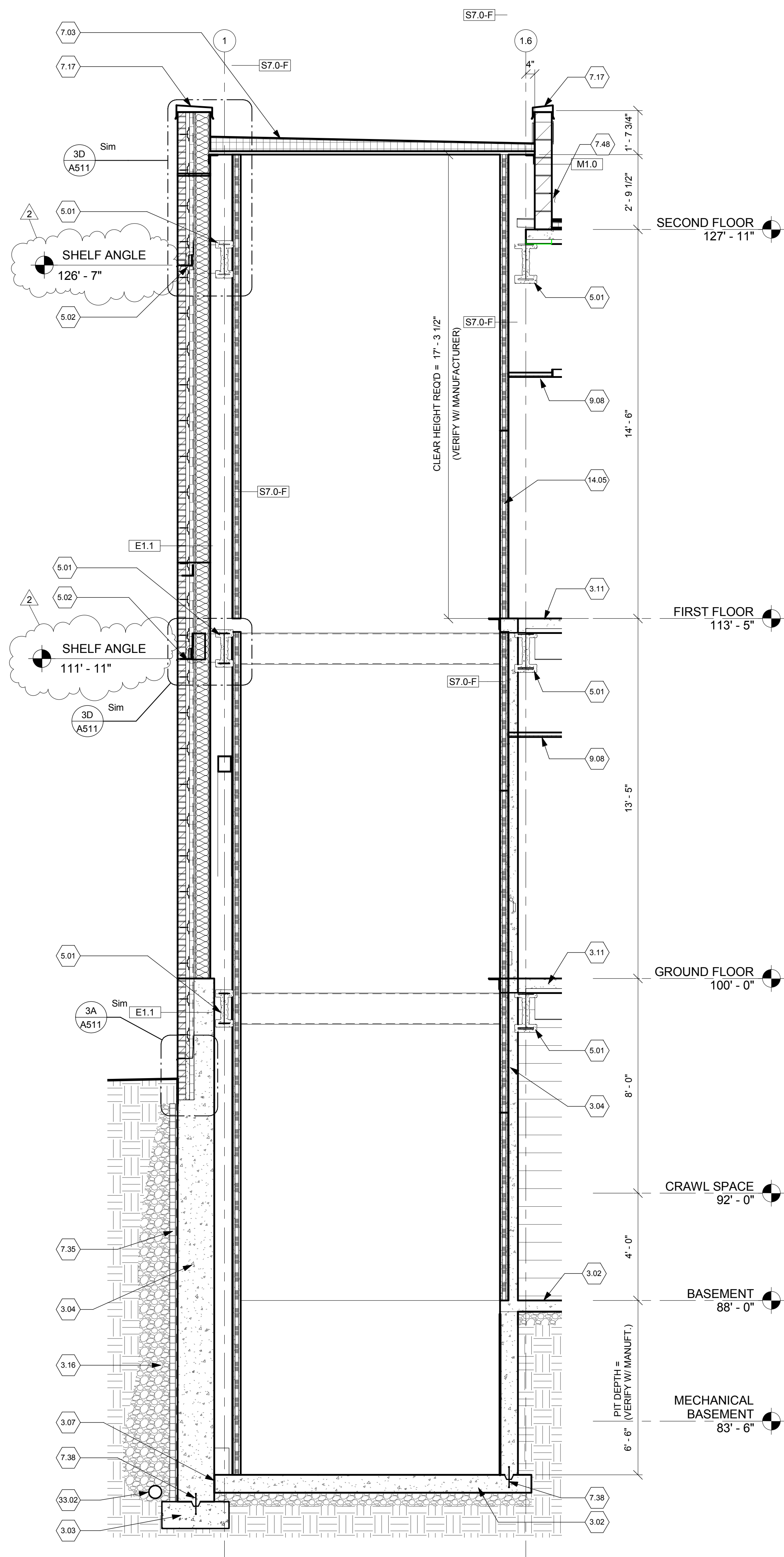
1 STAIR PLAN - BASEMENT  
Scale: 1/4" = 1'-0"

- STAIR NOTES
- 2.01 Existing construction.
  - 3.02 Concrete slab over vapor barrier over 6" compacted aggregate base. See Structural Drawings.
  - 3.07 1/2" expansion material.
  - 3.11 Concrete slab on metal deck. See Structural Drawings.
  - 5.07 Metal pan and concrete stair.
  - 5.11 Landing framing and concrete by Stair Manufacturer.
  - 5.17 Steel self-closing barrier gate.
  - 5.32 Painted steel handrail, 1-1/2" ID. Grind all joints smooth and factory prime.
  - 5.33 Painted steel guardrail, 1-1/2" ID. Grind joints smooth and factory prime.
  - 5.34 3/4" steel pickets @ 4" o.c. Factory prime.
  - 7.03 Roof assembly: EPDM membrane over sloped tapered insulation. 3" minimum insulation thickness over 1 1/2" metal deck. Provide 1 hour rated sprayed-on fireproofing on interior side of exposed deck and structure. Assembly shall be installed to allow for future removal.
  - 7.17 Prefinished aluminum coping.
  - 7.28 Fire-rated wall to wall expansion joint cover assembly.
  - 7.30 2" insulated building expansion joint
  - 7.41 Fire-rated floor to floor expansion joint cover assembly
  - 7.42 Fire-rated wall to floor expansion joint cover assembly
  - 7.47 2" continuous waterproof expansion joint.
  - 9.08 Suspended acoustic ceiling tile/grid.

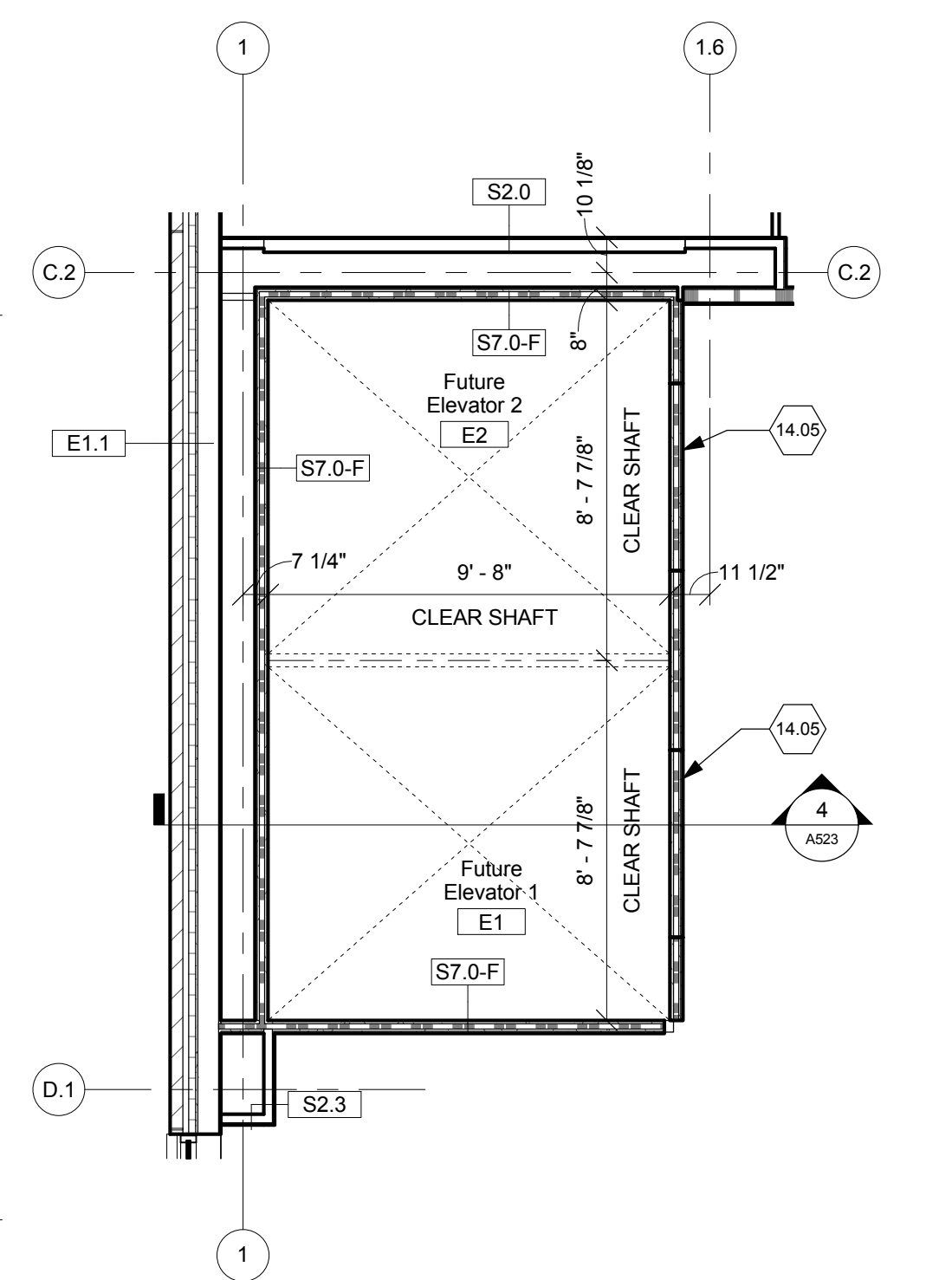
FULLY SPRINKLERED

<div>Revisions</div> <table><tr><td>2</td><td>Bid Documents</td><td>5/23/2014</td></tr><tr><td></td><td>Amendment #5</td><td>8/29/2014</td></tr><tr><td></td><td></td><td>Date</td></tr></table>		2	Bid Documents	5/23/2014		Amendment #5	8/29/2014			Date	CONSULTANTS:		<div>STATE OF OHIO JOHN A. POE REGISTERED ARCHITECT</div>		ARCHITECT/ENGINEERS: <div>JOHN POE ARCHITECTS</div> <div>116 EAST THIRD STREET DAYTON, OHIO 45402-2130</div> <div>937 461 3290 PHONE 937 461 0280 FAX jpo@johnpoe.com</div>		Drawing Title STAIR PLANS & DETAILS Approved: Project Director		Project Title CLINICAL ADDITION TO B31 Location Chillicothe, Ohio Date 5/23/2014 Checked JR Drawn NS		Project No. VA Project No. 538-110 JPA Project No. 10017.00 Building Number 31 Drawing Number A521 Dwg. 41 of 130		Office of Construction and Facilities Management Department of Veterans Affairs	
2	Bid Documents	5/23/2014																						
	Amendment #5	8/29/2014																						
		Date																						

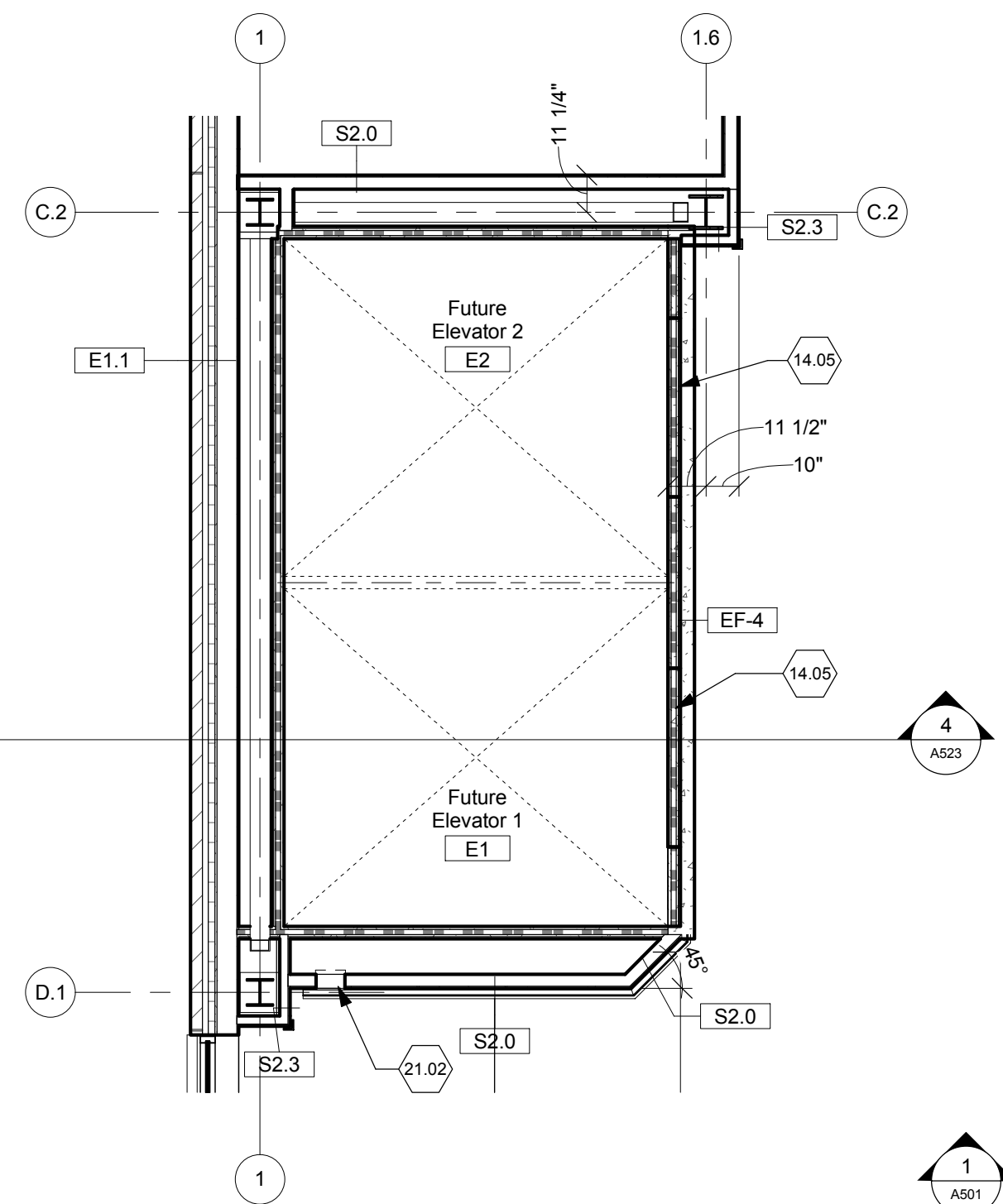




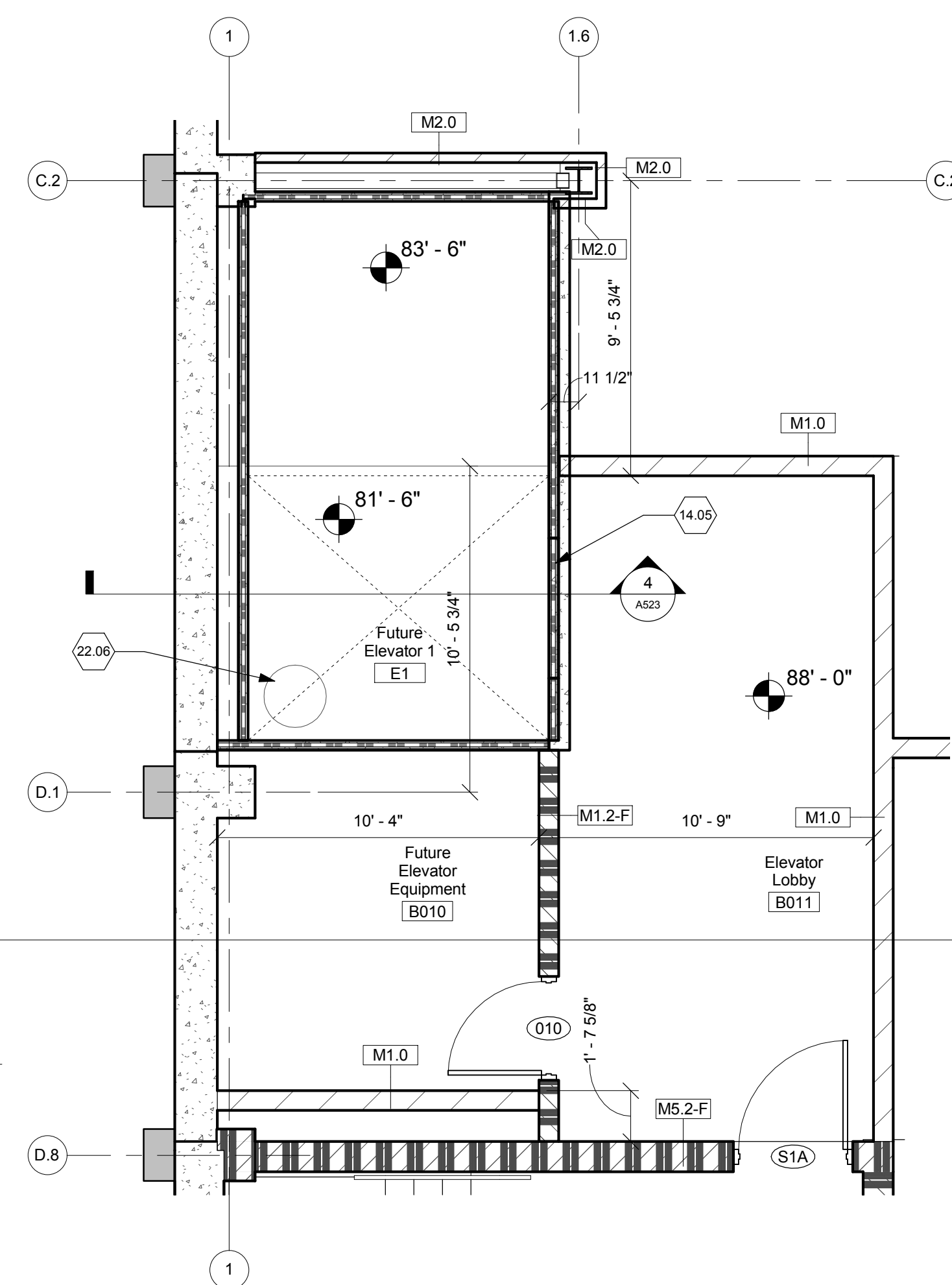
4 ELEVATOR SECTION  
Scale: 3/8" = 1'-0"



3 ELEVATOR - FIRST FLOOR  
Scale: 1/4" = 1'-0"

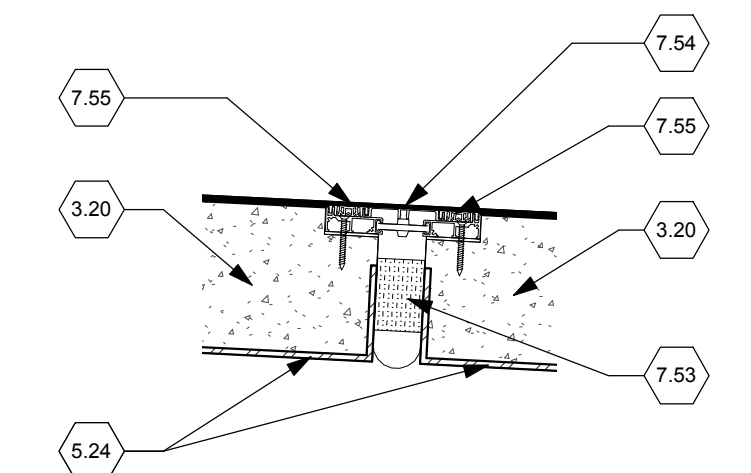


2 ELEVATORS - GROUND FLOOR  
Scale: 1/4" = 1'-0"

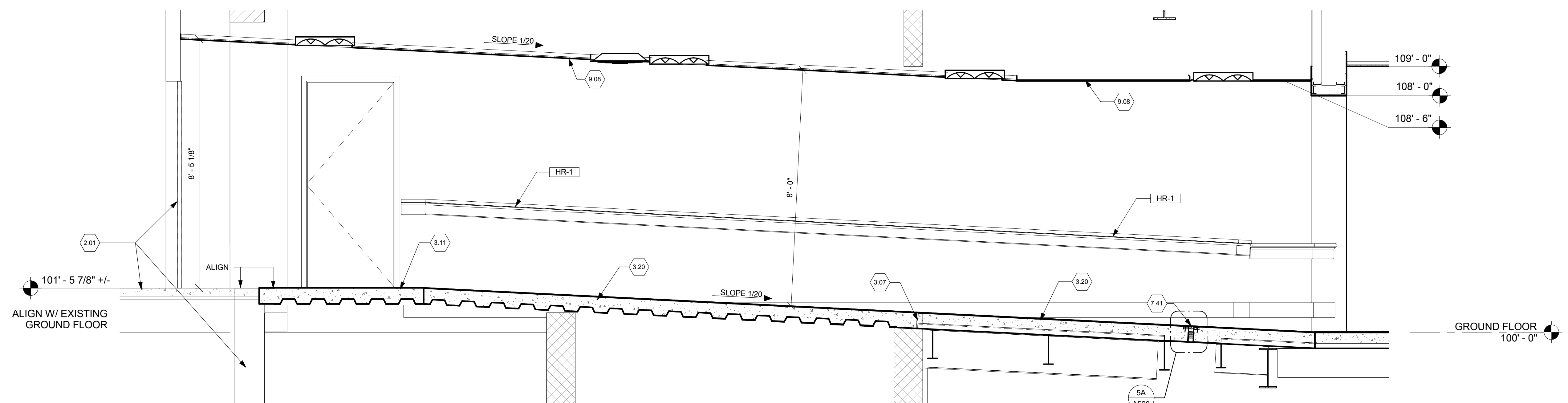


1 ELEVATORS - BASEMENT  
Scale: 1/4" = 1'-0"

- ELEVATOR NOTES**
- 2.01 Existing construction.
  - 3.02 Concrete slab over vapor barrier over 6" compacted aggregate base. See Structural Drawings.
  - 3.03 Concrete footing. See Structural Drawings.
  - 3.04 Concrete foundation. See Structural Drawings.
  - 3.07 1/2" expansion material.
  - 3.11 Concrete slab on metal deck. See Structural Drawings.
  - 3.16 Granular (drainage) fill.
  - 3.20 Concrete ramp with 1:20 slope. See Structural Drawings.
  - 5.01 Steel beam protected with 2 hour-rated sprayed-on fireproofing. See Structural Drawings.
  - 5.02 Steel angle. See Structural Drawings.
  - 5.24 Continuous steel bent plate / pour stop. See Structural Drawings.
  - 7.03 Roof assembly: EPDM membrane over sloped tapered insulation, 3" minimum insulation thickness over 1 1/2" metal deck. Provide 1 hour rated sprayed-on fireproofing on interior side of exposed deck and structure. Assembly shall be installed to allow for future removal.
  - 7.17 Prefinished aluminum coping.
  - 7.35 2 1/2" rigid polystyrene insulation with drainage channels - R-12 min. over bituminous sheet waterproofing.
  - 7.38 Continuous waterstop.
  - 7.41 Fire-rated floor to floor expansion joint cover assembly
  - 7.48 Termination bar. Located under reglet flashing.
  - 7.53 2-hour rated fire stop per expansion joint manufacturer.
  - 7.54 Continuous aluminum center plate.
  - 7.55 Suspended acoustic ceiling tile/grid.
  - 14.05 Provide knock-out panel for future elevator doors.
  - 21.02 Recessed fire extinguisher cabinet. Coordinate cabinet size with Owner-provided fire extinguisher.
  - 22.08 Sump. See Plumbing Drawings.
  - 33.02 Continuous 6" perimeter drain tile. See Civil Drawings for connection to storm piping.



5A DETAIL  
Scale: 1 1/2" = 1'-0"

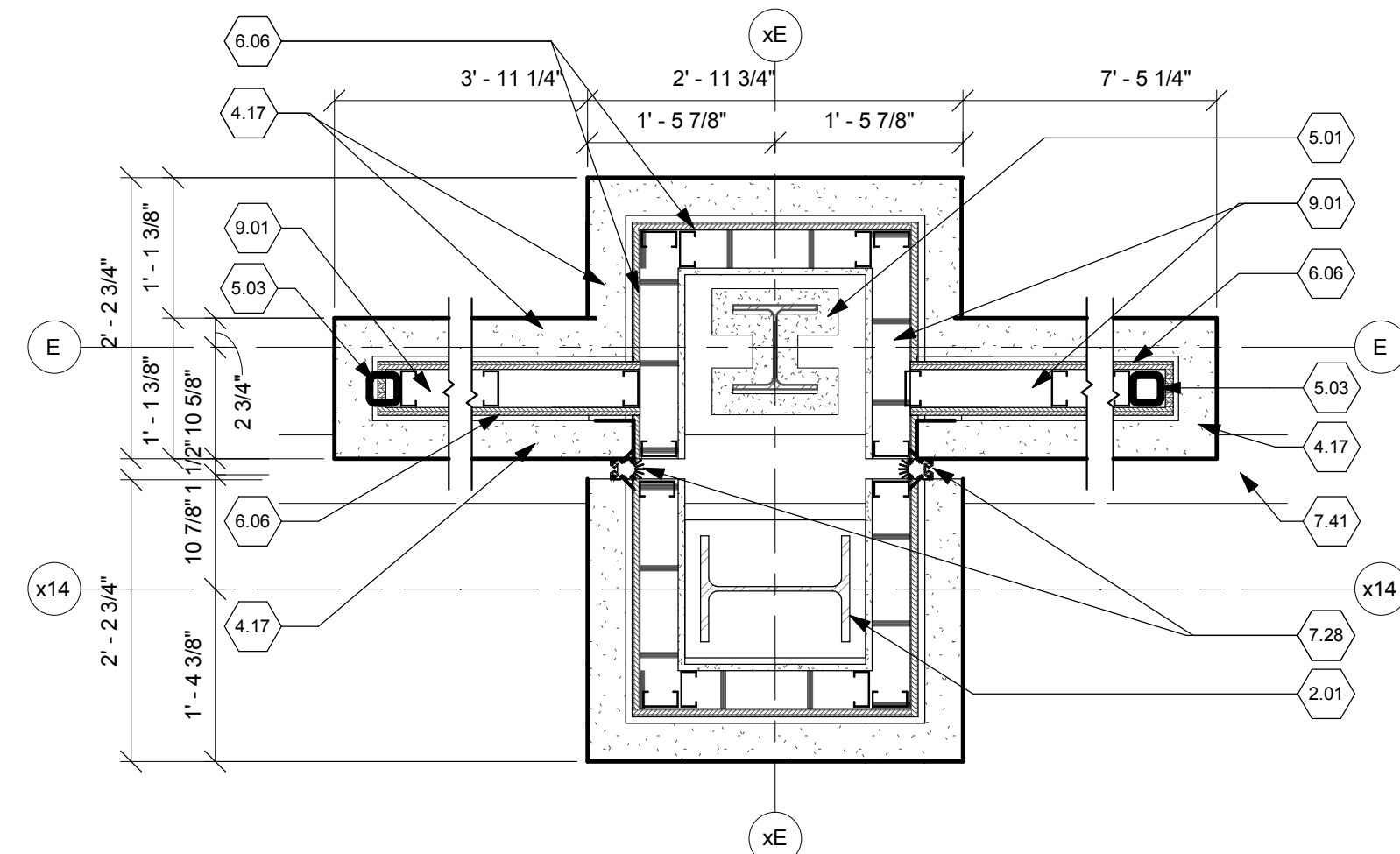


5 RAMP SECTION  
Scale: 1/2" = 1'-0"

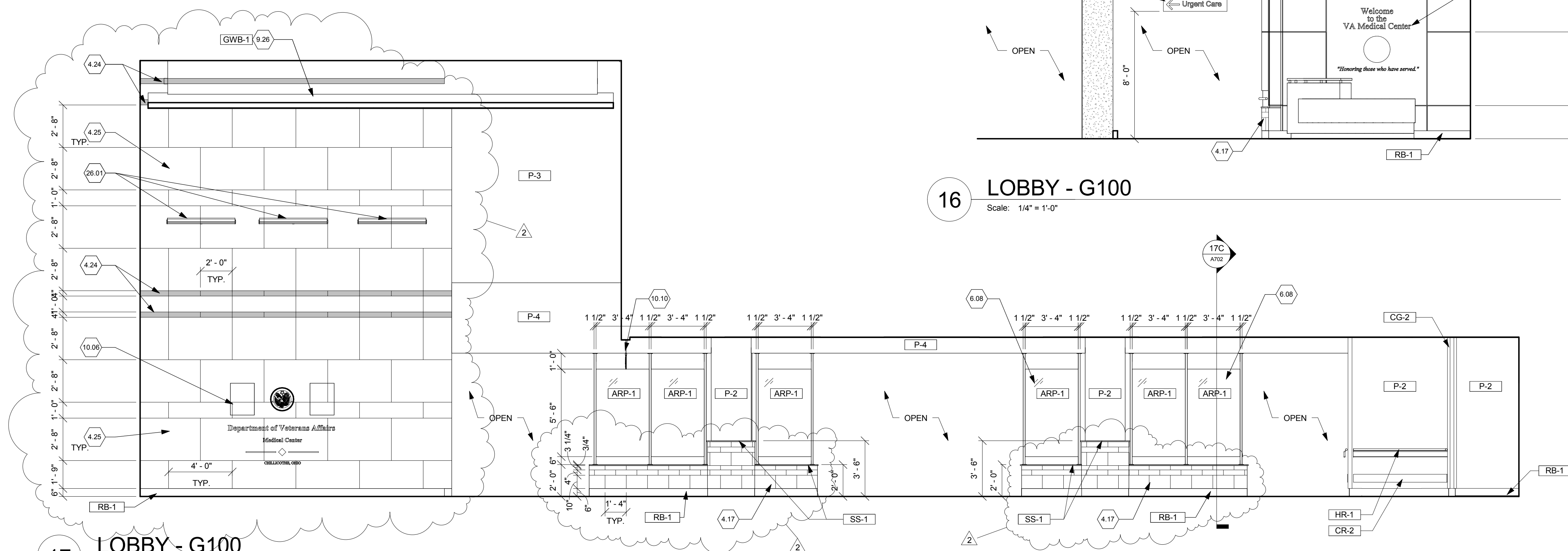
FULLY SPRINKLERED

																																																																																																																																																																																																																																																																																																																																																																																																																																																																																																																																																																																																																																																																																																																																																																																																																																																																																																																																																																																																																																																																																																																																																																																																																																																																																																																																																																																																																																																																																																																																																																									</
--	--	--	--	--	--	--	--	--	--	--	--	--	--	--	--	--	--	--	--	--	--	--	--	--	--	--	--	--	--	--	--	--	--	--	--	--	--	--	--	--	--	--	--	--	--	--	--	--	--	--	--	--	--	--	--	--	--	--	--	--	--	--	--	--	--	--	--	--	--	--	--	--	--	--	--	--	--	--	--	--	--	--	--	--	--	--	--	--	--	--	--	--	--	--	--	--	--	--	--	--	--	--	--	--	--	--	--	--	--	--	--	--	--	--	--	--	--	--	--	--	--	--	--	--	--	--	--	--	--	--	--	--	--	--	--	--	--	--	--	--	--	--	--	--	--	--	--	--	--	--	--	--	--	--	--	--	--	--	--	--	--	--	--	--	--	--	--	--	--	--	--	--	--	--	--	--	--	--	--	--	--	--	--	--	--	--	--	--	--	--	--	--	--	--	--	--	--	--	--	--	--	--	--	--	--	--	--	--	--	--	--	--	--	--	--	--	--	--	--	--	--	--	--	--	--	--	--	--	--	--	--	--	--	--	--	--	--	--	--	--	--	--	--	--	--	--	--	--	--	--	--	--	--	--	--	--	--	--	--	--	--	--	--	--	--	--	--	--	--	--	--	--	--	--	--	--	--	--	--	--	--	--	--	--	--	--	--	--	--	--	--	--	--	--	--	--	--	--	--	--	--	--	--	--	--	--	--	--	--	--	--	--	--	--	--	--	--	--	--	--	--	--	--	--	--	--	--	--	--	--	--	--	--	--	--	--	--	--	--	--	--	--	--	--	--	--	--	--	--	--	--	--	--	--	--	--	--	--	--	--	--	--	--	--	--	--	--	--	--	--	--	--	--	--	--	--	--	--	--	--	--	--	--	--	--	--	--	--	--	--	--	--	--	--	--	--	--	--	--	--	--	--	--	--	--	--	--	--	--	--	--	--	--	--	--	--	--	--	--	--	--	--	--	--	--	--	--	--	--	--	--	--	--	--	--	--	--	--	--	--	--	--	--	--	--	--	--	--	--	--	--	--	--	--	--	--	--	--	--	--	--	--	--	--	--	--	--	--	--	--	--	--	--	--	--	--	--	--	--	--	--	--	--	--	--	--	--	--	--	--	--	--	--	--	--	--	--	--	--	--	--	--	--	--	--	--	--	--	--	--	--	--	--	--	--	--	--	--	--	--	--	--	--	--	--	--	--	--	--	--	--	--	--	--	--	--	--	--	--	--	--	--	--	--	--	--	--	--	--	--	--	--	--	--	--	--	--	--	--	--	--	--	--	--	--	--	--	--	--	--	--	--	--	--	--	--	--	--	--	--	--	--	--	--	--	--	--	--	--	--	--	--	--	--	--	--	--	--	--	--	--	--	--	--	--	--	--	--	--	--	--	--	--	--	--	--	--	--	--	--	--	--	--	--	--	--	--	--	--	--	--	--	--	--	--	--	--	--	--	--	--	--	--	--	--	--	--	--	--	--	--	--	--	--	--	--	--	--	--	--	--	--	--	--	--	--	--	--	--	--	--	--	--	--	--	--	--	--	--	--	--	--	--	--	--	--	--	--	--	--	--	--	--	--	--	--	--	--	--	--	--	--	--	--	--	--	--	--	--	--	--	--	--	--	--	--	--	--	--	--	--	--	--	--	--	--	--	--	--	--	--	--	--	--	--	--	--	--	--	--	--	--	--	--	--	--	--	--	--	--	--	--	--	--	--	--	--	--	--	--	--	--	--	--	--	--	--	--	--	--	--	--	--	--	--	--	--	--	--	--	--	--	--	--	--	--	--	--	--	--	--	--	--	--	--	--	--	--	--	--	--	--	--	--	--	--	--	--	--	--	--	--	--	--	--	--	--	--	--	--	--	--	--	--	--	--	--	--	--	--	--	--	--	--	--	--	--	--	--	--	--	--	--	--	--	--	--	--	--	--	--	--	--	--	--	--	--	--	--	--	--	--	--	--	--	--	--	--	--	--	--	--	--	--	--	--	--	--	--	--	--	--	--	--	--	--	--	--	--	--	--	--	--	--	--	--	--	--	--	--	--	--	--	--	--	--	--	--	--	--	--	--	--	--	--	--	--	--	--	--	--	--	--	--	--	--	--	--	--	--	--	--	--	--	--	--	--	--	--	--	--	--	--	--	--	--	--	--	--	--	--	--	--	--	--	--	--	--	--	--	--	--	--	--	--	--	--	--	--	--	--	--	--	--	--	--	--	--	--	--	--	--	--	--	--	--	--	--	--	--	--	--	--	--	--	--	--	--	--	--	--	--	--	--	--	--	--	--	--	--	--	--	--	--	--	--	--	--	--	--	--	--	--	--	--	--	--	--	--	--	--	--	--	--	--	--	--	--	--	--	--	--	--	--	--	--	--	--	--	--	--	--	--	--	--	--	--	--	--	--	--	--	--	--	--	--	--	--	--	--	--	--	--	--	--	--	--	--	--	--	--	--	--	--	--	--	--	--	--	--	--	--	--	--	--	--	--	--	--	--	--	--	--	--	--	--	--	--	--	--	--	--	--	--	--	--	--	--	--	--	--	--	--	--	--	--	--	--	--	--	--	--	--	--	--	--	--	--	--	--	--	--	--	--	--	--	--	--	--	--	--	--	--	--	--	--	--	--	--	--	--	--	--	--	--	--	--	--	--	--	--	--	--	--	--	--	--	--	--	--	--	--	--	--	--	--	--	--	--	--	--	--	--	--	--	--	--	--	--	--	--	--	--	--	--	--	--	--	--	--	--	--	--	--	--	--	--	--	--	--	--	--	--	--	--	--	--	--	--	--	--	--	--	--	--	--	--	--	--	--	--	--	--	--	--	--	--	--	--	--	--	--	--	--	--	--	--	--	--	--	--	--	--	--	--	--	--	--	--	--	--	--	--	--	--	--	--	--	--	--	--	--	--	--	--	--	--	--	--	--	--	--	--	--	--	--	--	--	--	--	--	--	--	--	--	--	--	--	--	--	--	--	--	--	--	--	--	--	--	--	--	--	--	--	--	--	--	--	--	--	--	--	--	--	--	--	--	--	--	--	--	--	--	--	--	--	--	--	--	--	--	--	--	--	--	--	--	--	--	--	--	--	--	--	--	--	--	--	--	--	--	--	--	--	--	--	--	--	--	--	--	--	--	--	--	--	--	--	--	--	--	--	--	--	--	--	--	--	--	--	--	--	--	--	--	--	--	--	--	--	--	--	--	--	--	--	--	--	--	--	--	--	--	--	--	--	--	--	--	--	--	--	--	--	--	--	--	--	--	--	--	--	--	--	--	--	--	--	--	--	--	--	--	--	--	--	--	--	--	--	--	--	--	--	--	--	--	--	--	--	--	--	--	--	--	--	--	--	--	--	--	--	--	--	--	--	--	--	--	--	--	--	--	--	--	--	--	--	--	--	--	--	--	--	--	--	--	--	--	--	--	--	----

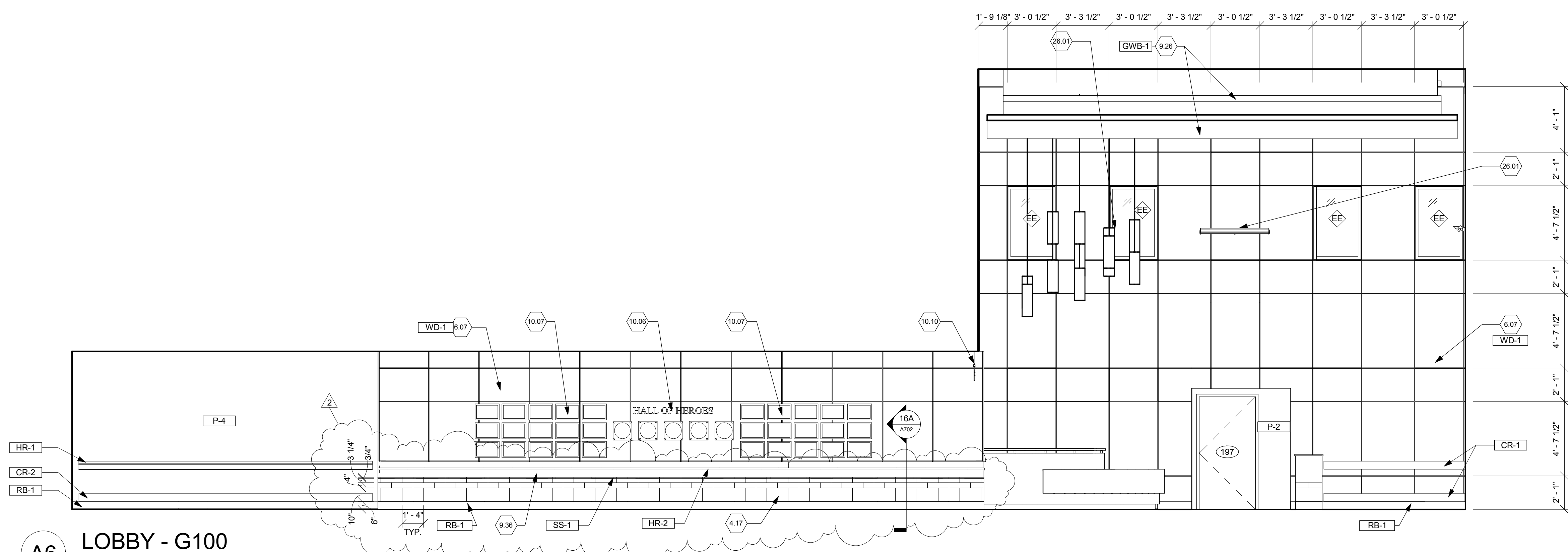




17A PLAN DETAIL @ LOBBY WALL LOW  
Scale: 3/4" = 1'-0"



17 LOBBY - G100  
Scale: 1/4" = 1'-0"



**A6** LOBBY - G100  
Scale: 1/4" = 1'-0"

2.01 Existing construction.

4.17 Cast Stone Veneer.

4.24 Cast stone veneer - rock face.

4.25 Cast stone veneer - smooth face.

5.01 Steel beam protected with 2 hour-rated sprayed-on fireproofing. See Structural Drawings.

5.03 Steel tube. See Structural Drawings.

6.01 Continuous fire retardant treated blocking as required. Pressure-treated at all exterior locations.

6.04 Solid surface sill.

6.06 3/4" fire-resistant treated plywood.

6.07 Wood wall panel system.

6.08 Translucent resin panel system.

6.11 Wall panel edge trim.

6.14 Blocking as required.

6.15 Stainless steel base plate.

6.17 Stainless steel bracket clip.

6.18 3/8" gauge acrylic resin panel.

7.28 Fire-rated wall to wall expansion joint cover assembly.

7.41 Fire-rated floor to floor expansion joint cover assembly

9.01 3 5/8" 20 ga. metal studs @ 16" o.c.

9.06 5/8" type "X" gypsum board

9.12 Gypsum board soffit. See Detail 1/A307.

9.15 Resilient base.

9.26 5/8" Type "X" gypsum board on 3 5/8" metal stud framing. Paint GWB-1.

9.36 Wood veneer stained to match WD-1.

10.06 Dimensional signage and seals. Provided by Owner. Relocated and installed by Contractor. Coordinate exact location with COTR.

10.07 Relocated plaques. Provided by Owner. Relocated and installed by Contractor. Coordinate exact location with COTR.

10.10 Overhead sign. See Signage on A902.


10.11 Metal handrail.

26.01 Light fixture. See Electrical Drawings.

16 LOBBY - G100  
Scale: 1/4" = 1'-0"

## FULLY SPRINKLERED

Office of  
Construction  
and Facilities  
Management

 Department of  
Veterans Affairs