



THP Limited, Inc.
100 East Eighth Street
Cincinnati, Ohio 45202
Phone: 513.241.3222
Fax: 513.241.2981
www.thpltd.com

PROJECT CLINICAL ADDITION		THP # 08301.15	DRAWING NUMBER SKS-002
TITLE REVISED DETAIL 39/S503			
ISSUE			
BY FJE/SET		DATE 08/28/14	

TYPICAL STAIR TOWER
REINFORCING #5 AT 32"
VERT INSIDE FACE.

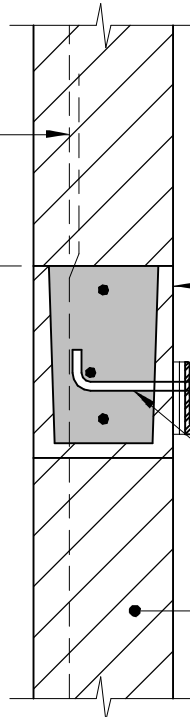
T/BEAM
99'-4"
112'-8"
127'-4"

16" DEEP BOND BEAM.
REINFORCE WITH
(3) #6 CONTINUOUS.

B/LEDGE
SEE ARCH.

PROVIDE 5/8" DIA
J-BOLTS AT 16" O.C.

12" CMU WALL



39

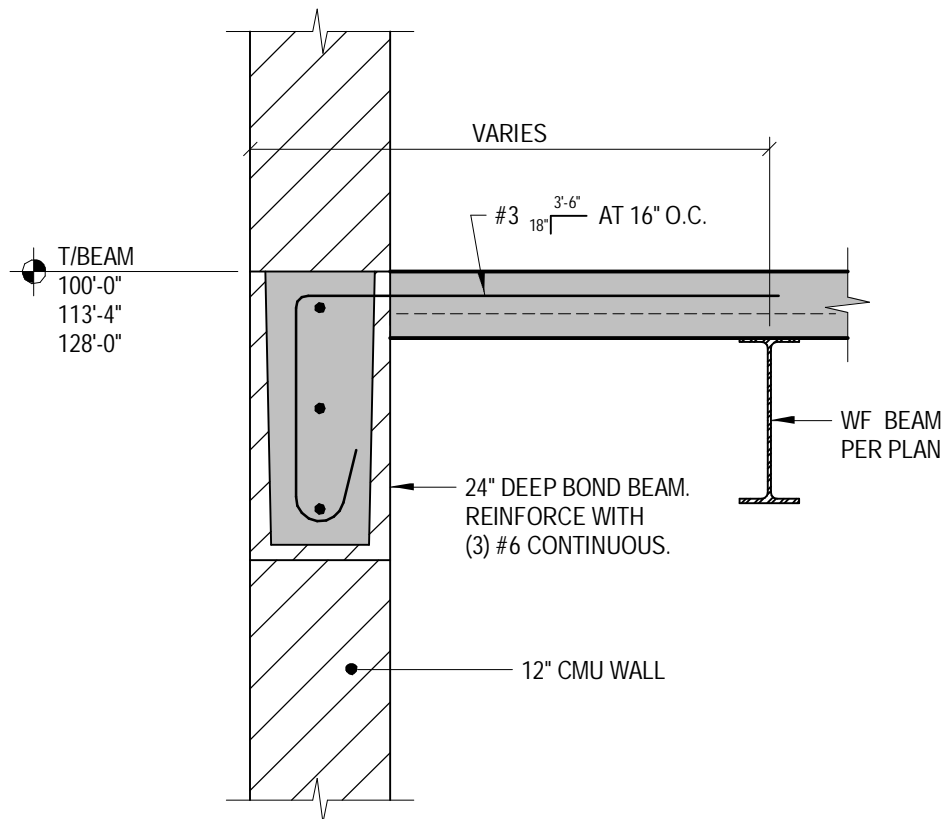
SECTION

SKS-002 3/4" = 1'-0"



THP Limited, Inc.
100 East Eighth Street
Cincinnati, Ohio 45202
Phone: 513.241.3222
Fax: 513.241.2981
www.thpltd.com

PROJECT CLINICAL ADDITION		THP # 08301.15	DRAWING NUMBER SKS-001
TITLE REVISED DETAIL 38/S503			
ISSUE			
BY FJE/SET	DATE 08/28/14		



38 SECTION
SKS-001 3/4" = 1'-0"