

A  
three inches = one foot  
1  
one and one half inches = one foot  
B  
2  
one inch = one foot  
C  
three quarters inch = one foot  
D  
one half inch = one foot  
E  
three eighths inch = one foot  
F  
one quarter inch = one foot  
16  
one eighth inch = one foot

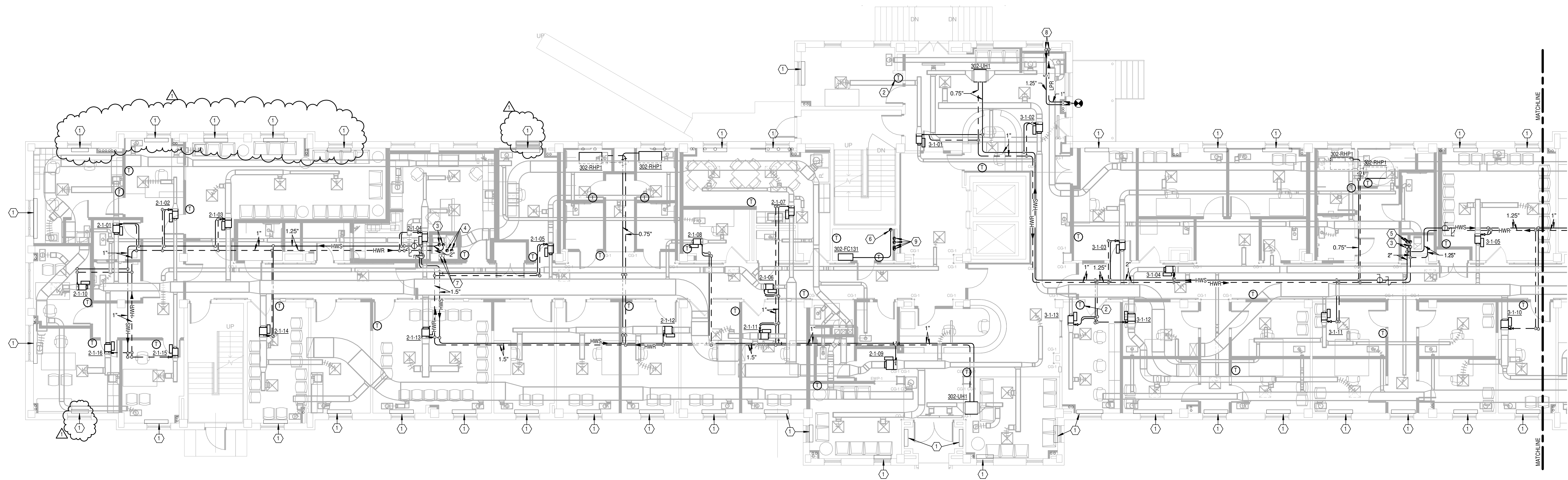
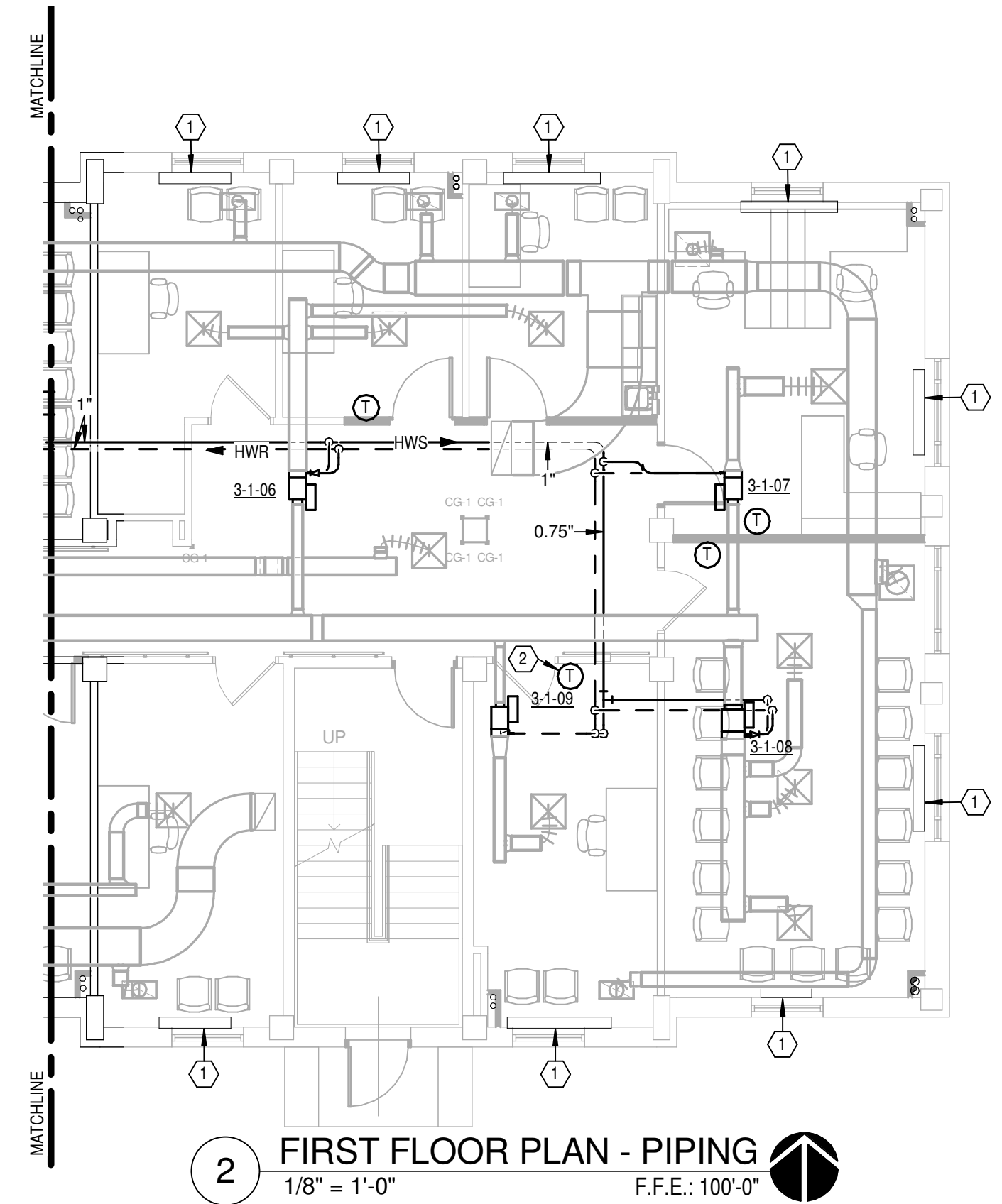
8/27/2014 10:14 AM

GENERAL NOTES

- A REFER TO SHEET H0.1 FOR LEGEND, ABBREVIATIONS AND ADDITIONAL GENERAL NOTES.  
B RUNOUT PIPING TO TERMINAL UNITS SHALL BE 0.75" SIZE UNLESS OTHERWISE NOTED.

NOTES

- 1 EXISTING STEAM CONVECTOR TO REMAIN. REMOVE EXISTING SELF-CONTAINED STEAM CONTROL VALVE AND REPLACE WITH ODC. REFER TO DETAIL ON SHEET H0.6 AND CONTROL DIAGRAM ON SHEET H0.10.  
2 FISH THERMOSTAT WIRES THROUGH EXISTING WALL.  
3 3" HEATING HOT WATER SUPPLY AND RETURN PIPES DOWN. REFER TO SHEET H3.1-0 FOR CONTINUATION. 2.5" HEATING HOT WATER SUPPLY AND RETURN PIPES UP. REFER TO SHEET H3.1-2 FOR CONTINUATION.  
4 5" CHILLED WATER SUPPLY AND RETURN PIPES UP AND DOWN. REFER TO SHEETS H3.1-0 AND H3.1-2 FOR CONTINUATION.  
5 4" CHILLED WATER SUPPLY AND RETURN PIPES UP AND DOWN. REFER TO SHEETS H3.1-0 AND H3.1-2 FOR CONTINUATION.  
6 PROVIDE REFRIGERANT PIPING AND ACCESSORIES PER MANUFACTURER'S RECOMMENDATIONS. APPROXIMATE ROUTE SHOWN.  
7 EXISTING 2" STEAM SUPPLY AND 1.25" STEAM CONDENSATE RETURN PIPES UP TO FLOOR ABOVE AND DOWN TO FLOOR BELOW. REFER TO SHEETS H3.1-0 AND H3.1-2 FOR CONTINUATION.  
8 STEAM AND CONDENSATE PIPING DOWN. REFER TO SHEET H3.1-0 FOR CONTINUATION.  
9 EXTEND FULL SIZE VENT PIPING FROM BASEMENT UP THRU ROOF. REFER TO SHEETS H4.1-0 AND H2.1-4.



1 FIRST FLOOR PLAN - PIPING  
1/8" = 1'-0"  
F.F.E.: 100'-0"

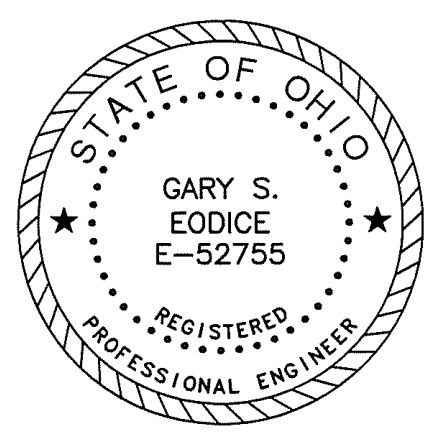
3023.00

1. ADDENDUM 3  
Revisions

8/27/14  
Date

App Architecture  
creative focused design

615 Woodside Drive, Englewood, Ohio 45322  
T 937.836.8898 F 937.832.3696  
www.app-arch.com



Revised By:

Drawing Title  
FIRST FLOOR PLAN - PIPING

Approved: Project Manager  
CHRIS MOORHEAD

Approved: Service Chief  
PHILIP KIRK

Project Title  
MODERNIZE MENTAL HEALTH SERVICES

Building Number  
302

Checked  
DLE

Drawn  
WJS

Location  
4100 WEST THIRD STREET  
DAYTON, OH 45428

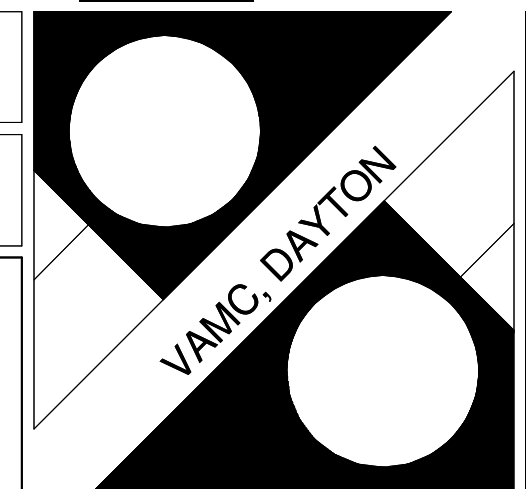
Date  
05/29/2014

Project No.  
552-14-103

Drawing No.  
H3.1-1

Heapy Engineering  
MEP Design Technology Planning Commissioning Energy  
Nationally Recognized Leader in Sustainability

1400 W Dorothy Lane, Dayton, OH 45409-1310  
Ph 937-224-0861 Fax 937-224-5777 www.heapy.com  
HEAPY PROJECT No: 2013-04004 FIRM LICENSE No: 01528



VA  
Department of  
Veterans Affairs