

three inches = one foot

one and one half inch = one foot

one inch = one foot

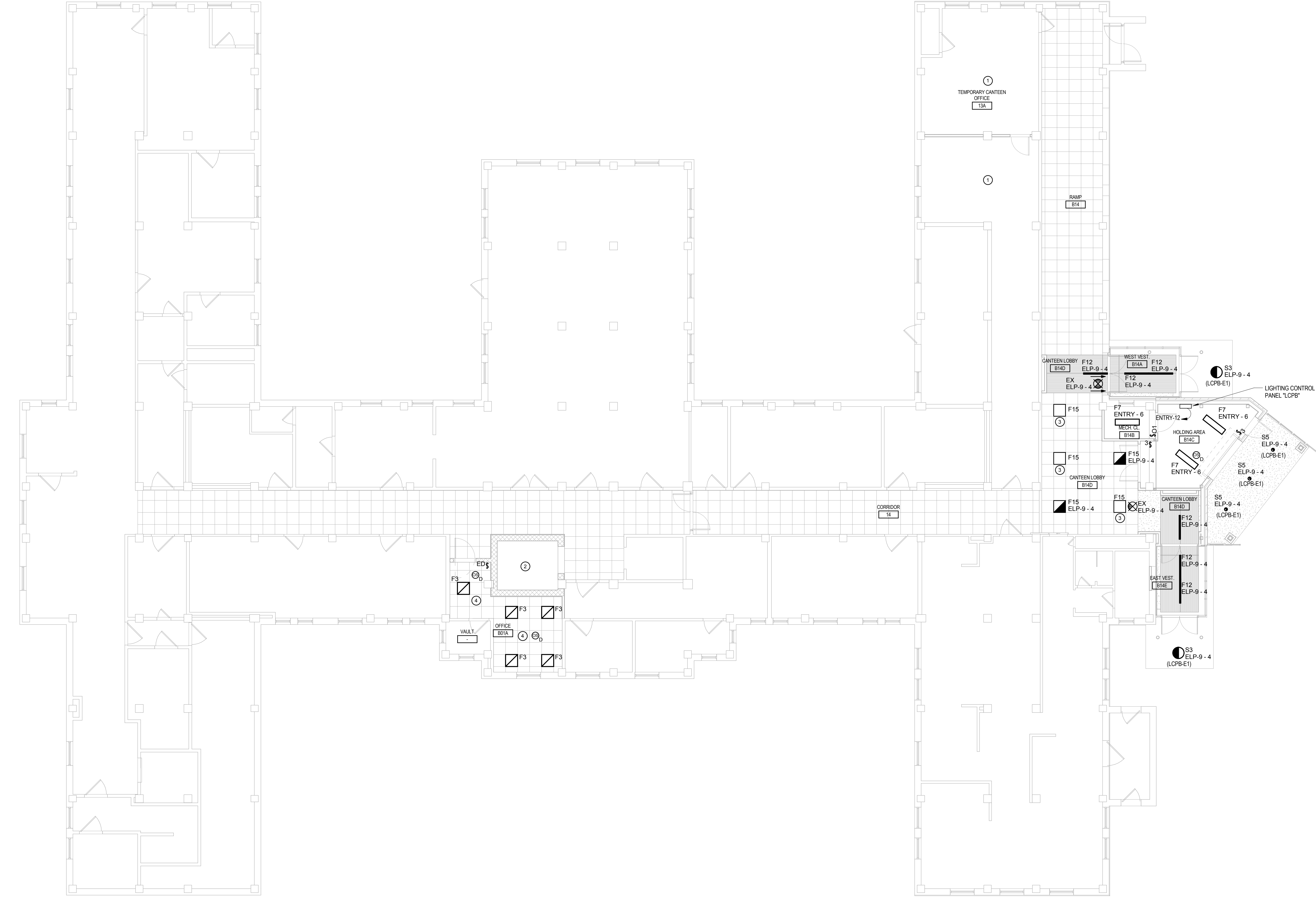
three quarters inch = one foot

one half inch = one foot

three eighths inch = one foot

one quarter inch = one foot

one eighth inch = one foot



1 LIGHTING PLAN - BASEMENT FLOOR  
1/8" = 1'-0"

OCCUPANCY SENSOR INSTALLATION GUIDELINES

- THE OCCUPANCY SENSORS INDICATED ON THE DRAWINGS ARE SHOWN FOR DESIGN INTENT ONLY. THE EXACT QUANTITY OF SENSORS SHALL BE DETERMINED BY THE ELECTRICAL CONTRACTOR PRIOR TO INSTALLING SENSORS BASED ON THE MANUFACTURERS LITERATURE.
- PROVIDE 100% COVERAGE OF EACH INDIVIDUAL ROOMSPACE SHOWN ON THE DRAWINGS.
- DO NOT INSTALL SENSORS PRIOR TO SUBMITTING COVERAGE LAYOUTS FOR EACH INDIVIDUAL ROOM TO THE ENGINEER FOR APPROVAL. EACH ROOM SHALL BE SUBMITTED SEPARATELY FOR REVIEW.
- DO NOT INSTALL SENSORS SUCH THAT THEY CAN POTENTIALLY "SEE" THROUGH OPEN DOORWAYS.
- INSTALL ALL LOW VOLTAGE POWER PACKS DIRECTLY ABOVE THE LOCAL WALL SWITCHES IN THE AREA.
- SENSOR OPERATION SHALL BE AS FOLLOWS:
  - OCCUPANT ENTERS ROOM AND THEY MUST MANUALLY TURN ON LIGHTS.
  - SENSOR TURNS OFF LIGHTS AFTER 10 MINUTES OF INACTIVITY.
  - UPON SENSING ACTIVITY LIGHTS TURN BACK ON.
- DO NOT INSTALL ULTRASONIC OR DUAL TECHNOLOGY SENSORS WITHIN 24" OF SUPPLY DIFFUSERS.

LIGHTING GENERAL NOTES

- ALL EXIT SIGNS SHALL BE POWERED FROM THE CIRCUIT INDICATED AND UNSWITCHED.
- EMERGENCY BATTERY BALLASTS SHALL HAVE AN UNSWITCHED LEG PROVIDED TO EACH FIXTURE.
- ALL NORMAL EMERGENCY FIXTURES POWERED BY AN EMERGENCY GENERATOR SHALL HAVE A BODINE GT200 OR EQUAL ON THE CIRCUIT TO PERMIT LOCAL CONTROL WITH THE ADJACENT FIXTURES.
- COORDINATE FINAL LOCATIONS OF FIXTURES WITH THE REFLECTED CEILING PLAN. ANY CONFLICTS SHALL BE BROUGHT TO THE ATTENTION OF THE ARCHITECT AND ENGINEER.
- COORDINATE ALL MOUNTING HEIGHTS WITH THE ARCHITECT AND ENGINEER PRIOR TO ROUGH-IN.
- WHERE MORE THAN ONE SWITCH OCCURS IN THE SAME LOCATION, THEY SHALL BE INSTALLED IN GANG TYPE BOX UNDER ONE COVERPLATE. MINIMUM CONDUIT SIZE 3/4". MINIMUM WIRE SIZE SHALL BE #12 AWG. ALL WIRE TO BE STRANDED COPPER.

NUMBERED NOTES

(This Drawing)

- EXISTING LIGHT FIXTURES SHALL BE REMOVED AND RELOCATED IF NECESSARY TO ACCOMMODATE THE NEW PARTITION WALL. EXISTING CIRCUITING AND SWITCHING SHALL BE RETAINED.
- REFER TO DRAWING E601 FOR ELEVATOR PIT LIGHTING REQUIREMENTS.
- NEW CORRIDOR LIGHT FIXTURES SHALL BE CONNECTED TO EXISTING CORRIDOR LIGHTING CIRCUIT AND SWITCHING SCHEDULED TO BE DEMOLISHED.
- CONNECT NEW LIGHT FIXTURES TO EXISTING LIGHTING CIRCUIT PRESENTLY FEEDING THIS ROOM.

RELAY PANEL SCHEDULE						PANEL NAME: LCPB		
LOAD INFORMATION						CONTROL TYPE		
RELAY #	DESCRIPTION	LOAD TYPE	PANEL	CIRCUIT	STEP DIM	0-10v DIM	PHOTOCELL	LV SWITCH
NORMAL SECTION								
N1	SITE LIGHT BOLLARDS	LIGHTING	ENTRY	8			X	X
N2	SPARE							
EMERGENCY SECTION								
E1	EGRESS LTG - LOADING DOCK	LIGHTING	ELP9	4			X	X
E2	SPARE							
NOTES:								
1. PANEL SHALL BE UL924 LISTED.								

LIGHTING SEQUENCE OF OPERATION:

- RELAYS N1& E1 SHALL BE CONTROLLED BY THE TIMECLOCK FROM 6:00p.m. - 6:00a.m. (M-F)
- DURING THE WEEKENDS THE LIGHTING SHALL BE CONTROLLED VIA PHOTOCELL OR OWNER CUSTOM SCHEDULE. COORDINATE WITH OWNER ANY SCHEDULING.

Revisions:

Date

CONSULTANTS:

HOPE FURRER Associates, Inc.

ARCHITECTS/ENGINEERS:

A/E works

6587 HAMILTON AVENUE  
PITTSBURGH, PENNSYLVANIA 15206  
PH: 412.287.7333 FAX: 412.287.7334  
www.ae-works.com

Drawing Title

LIGHTING PLAN - BASEMENT FLOOR

Approved: Project Director

Project Title

BUILDING 9 - SECOND FLOOR RENOVATION

Location: 1400 Blackhorse Hill Road  
Coatesville, PA 19320

Date

05 / 12 / 14

Checked

JJD

Drawn

JMZ

Project Number

542-13-105

Building Number

9

Drawing Number

E100

Dwg. 103 of 125

Office of Construction and Facilities Management

Department of Veterans Affairs