

1
2
3
4
5
6
7
8
9
10
11
12
13
14
15
16

three inches = one foot
one and one half inch = one foot

one and one half inch = one foot
one inch = one foot

one inch = one foot
three quarters inch = one foot

three quarters inch = one foot
one half inch = one foot

one half inch = one foot
one quarter inch = one foot

one quarter inch = one foot
three eighths inch = one foot

three eighths inch = one foot
one eighth inch = one foot

one eighth inch = one foot
one sixteenth inch = one foot

A

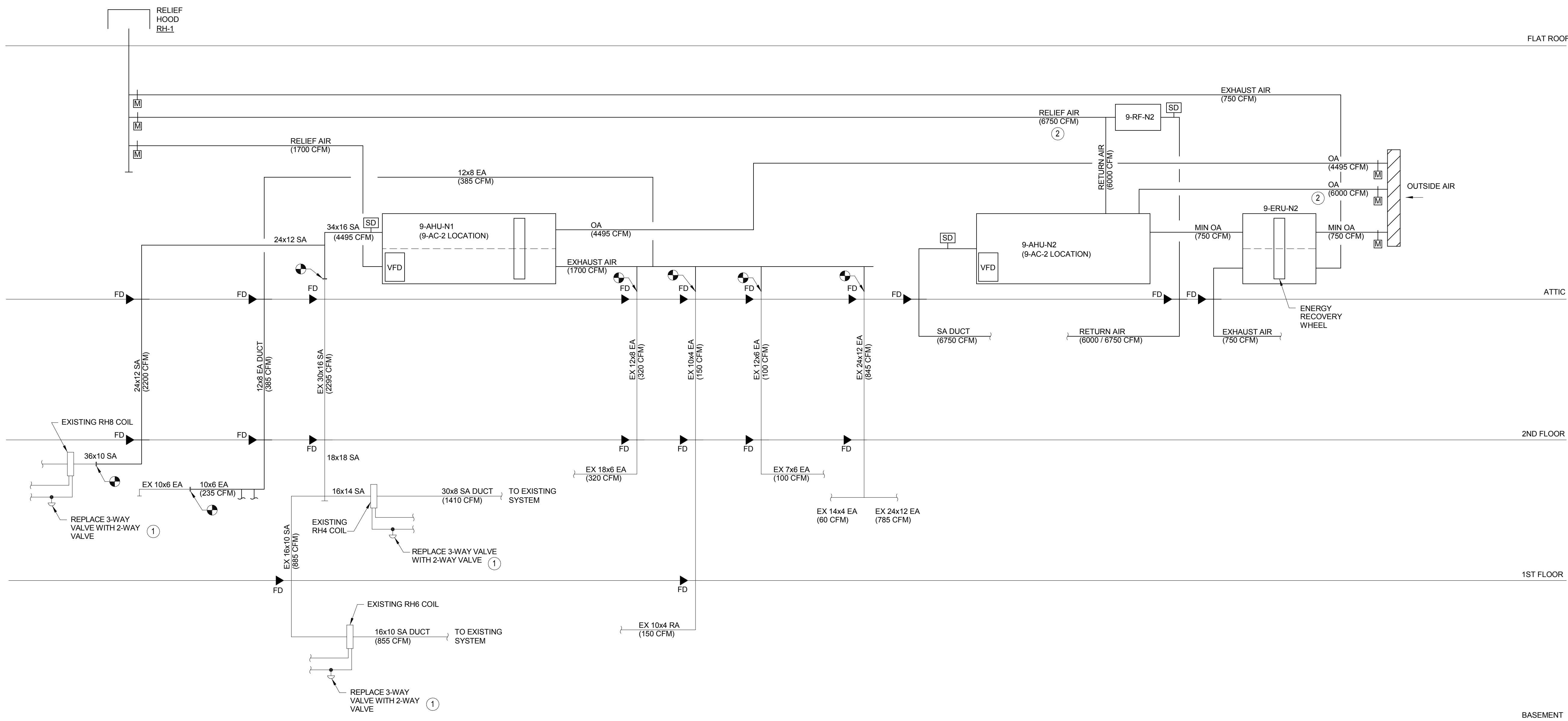
B

C

D

E

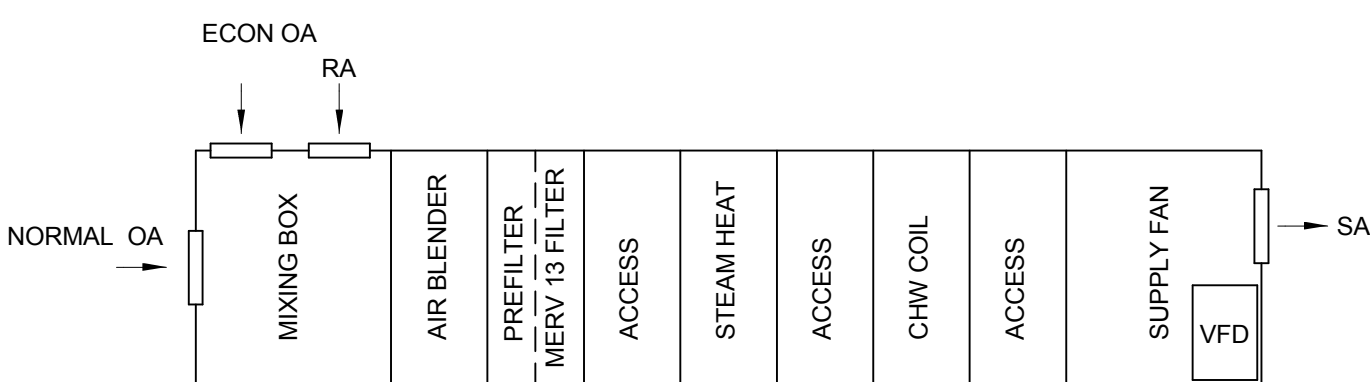
F



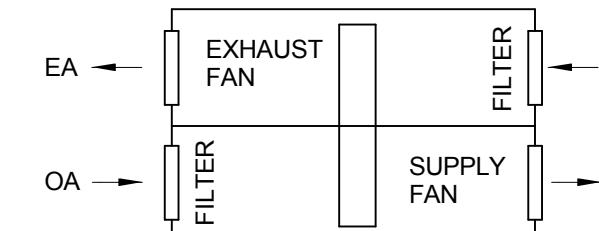
1 AIR HANDLING UNIT RISER DIAGRAM

HVAC KEY NOTES:

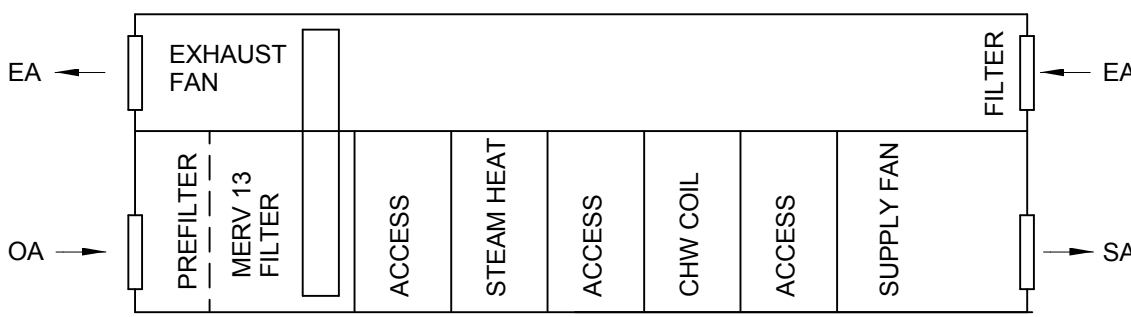
- 1 NEW 2-WAY VALVE TO HAVE ELECTRIC ACTUATOR AND WIRED TO NEW BUILDING DDC SYSTEM.
- 2 USED FOR ECONOMIZER OPERATION ONLY.



2 AIR HANDLING UNIT DETAIL

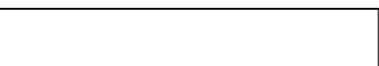





3 ENERGY RECOVERY UNIT DETAIL



4 VENTILATION AIR UNIT

FULLY SPRINKLERED
BID DOCUMENTS

		CONSULTANTS:				ARCHITECTS/ENGINEERS:		Drawing Title HVAC RISER DIAGRAM		Project Title BUILDING 9 - SECOND FLOOR RENOVATION		Project Number 542-13-105		Office of Construction and Facilities Management 	
						 6587 HAMILTON AVENUE PITTSBURGH, PENNSYLVANIA 15206 PH: 412.287.7333 FAX: 412.287.7334 www.ae-works.com		Approved: Project Director		Location: 1400 Blackhorse Hill Road Coatesville, PA 19320		Building Number 9			
Revisions:		Date						Date 05 / 12 / 14		Checked SPL		Drawn SPL		Drawing Number H601 Dwg. 93 of 125	