



ENGINEERS  
ARCHITECTS

THE KPA GROUP  
1 KAISER PLAZA, SUITE 445  
OAKLAND, CALIFORNIA 94612  
PHONE: (510) 271-6701 FAX (510) 271-6707

## ADDENDUM NO. 2

---

PROJECT:  
Sunnyvale New Office and Labs  
Department of Veterans Affairs  
VAPAHCS  
1080 Innovation Way  
Sunnyvale, CA 94085

VA'S PROJECT No.: 640-379

### NOTICE TO CONTRACTOR

This addenda modifies the original Documents dated May 9, 2014, as noted below and is subject to all of the requirements of those documents. The changes, additions, or deletions as set forth herein shall form a part of the Contract Documents; all other conditions shall remain unchanged

#### **Description:**

Addendum No. 2 to Drawings for the subject project is as follows:

- I. Drawings Changes– Replace with revised Sheets; changes are shown with revision delta 2 and cloud.
  - A. Sheet GI000 – Site Cover Sheet: Delete reference to Alternatives at top of notation box. This lists four alternatives. Alternatives shall be per General Requirements and the (3) three Alternates listed on the Cover Sheet.
  - B. Sheet CU102 – Site Utility Plan: Revise Alternative Number 2. Add to alternative. Extend 2” domestic water line from existing incoming water supply located at Grids F & 10 along hallway to new Fie Room 111. This line will provide domestic water only, no fire water.
  - C. Sheets SS102 & SS103. Clarify location of steel angles at bottom of beams.
- II. Specifications Changes
  - A. Section 01 57 19, Temporary Environmental Controls, Part 1, 1.4 Submittals, Add, provide a SWPPP per City of Sunnyvale requirements.
  - B. Section 08 71 00, Door Hardware, Part 2 Products, 2.5. Change lock cylinders from (6) six pin to (7) pin

ATTACHMENTS:

Drawing GI000, dated May 9, 2014.  
Drawing SS103, dated May 9, 2014.  
Drawing SS202, dated May 9, 2014.

**END ADDENDUM NO. 2**



three inches = one foot  
one and one half inches = one foot  
one inch = one foot  
three quarters inch = one foot  
one half inch = one foot  
three eighths inch = one foot  
one quarter inch = one foot  
one eighth inch = one foot



# DEPARTMENT OF VETERANS AFFAIRS

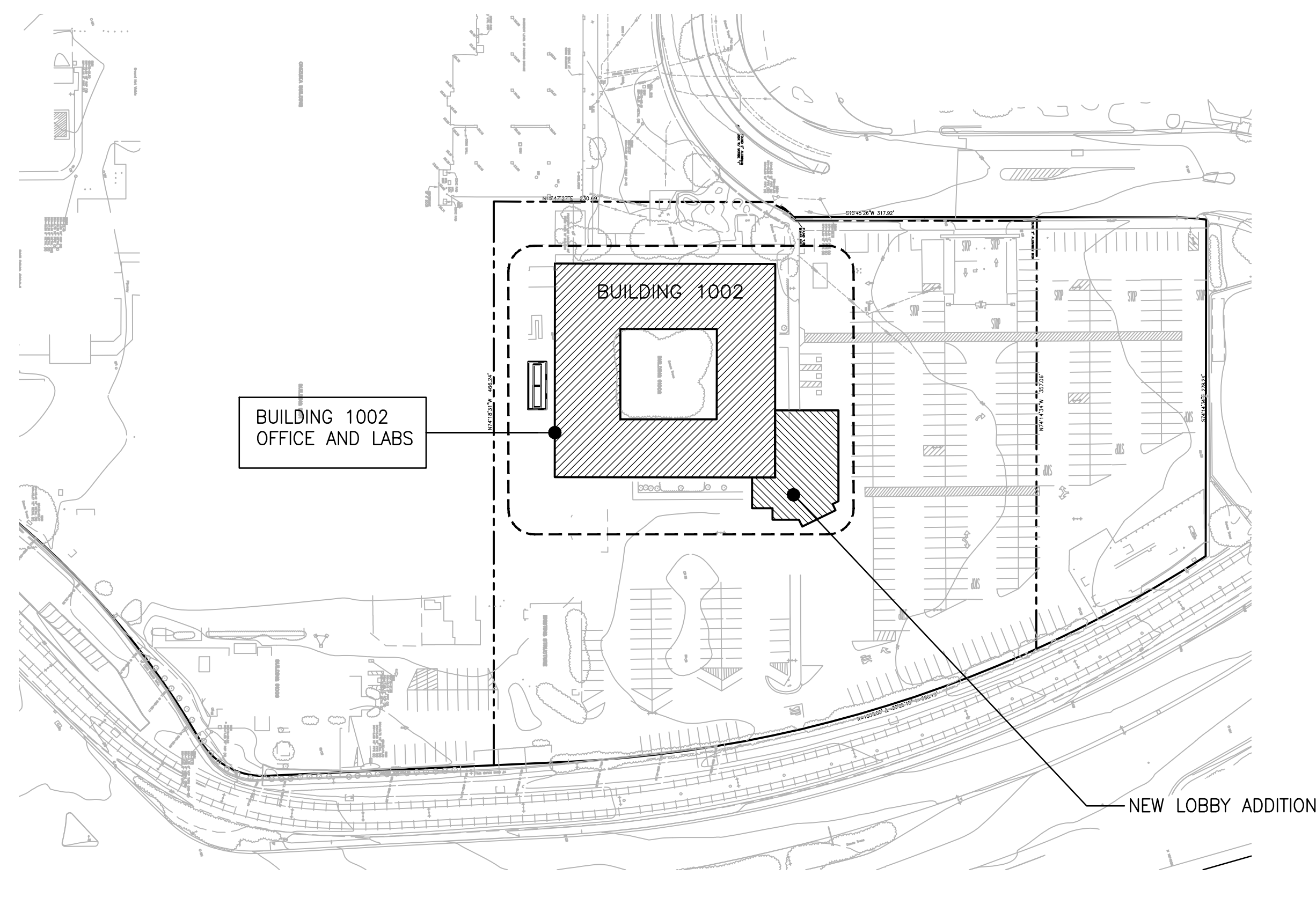
PALO ALTO HEALTH CARE SYSTEM  
3801 MIRANDA AVE, PALO ALTO CA

## NEW OFFICE AND LABS

### 1080 INNOVATION WAY, SUNNYVALE, CA

VA PROJECT No. 640-379

SITE PLAN



DEDUCT ALTERNATES:

- ALTERNATIVE No. 1**
- DELETE ONE ELEVATOR (EQUIPMENT)
  - DELETE WALL PANELS - NORTH ELEVATION
  - REDUCE METAL STUD WITH - NORTH WALL\DELETE ENTRANCE CANOPY
- ALTERNATIVE No. 2**
- DELETE TOILET ROOMS (1ST & 2ND FLOORS)
  - DELETE EXTENSION WATER & FIRE MAINS
  - DELETE SECURITY EQUIPMENT & CAMERAS
  - DELETE SPRAY INSULATION @ PATIO
- ALTERNATIVE No. 3**
- DELETE DECORATIVE GLASS (GL4,6 & 7)
  - DELETE TERRAZZO FLOORING
  - DELETE RETRACTABLE ACOUSTICAL WALL
  - DELETE INTERIOR MILLWORK
  - DELETE INTERIOR WOOD WALL PANELS.

PROJECT DESCRIPTION:

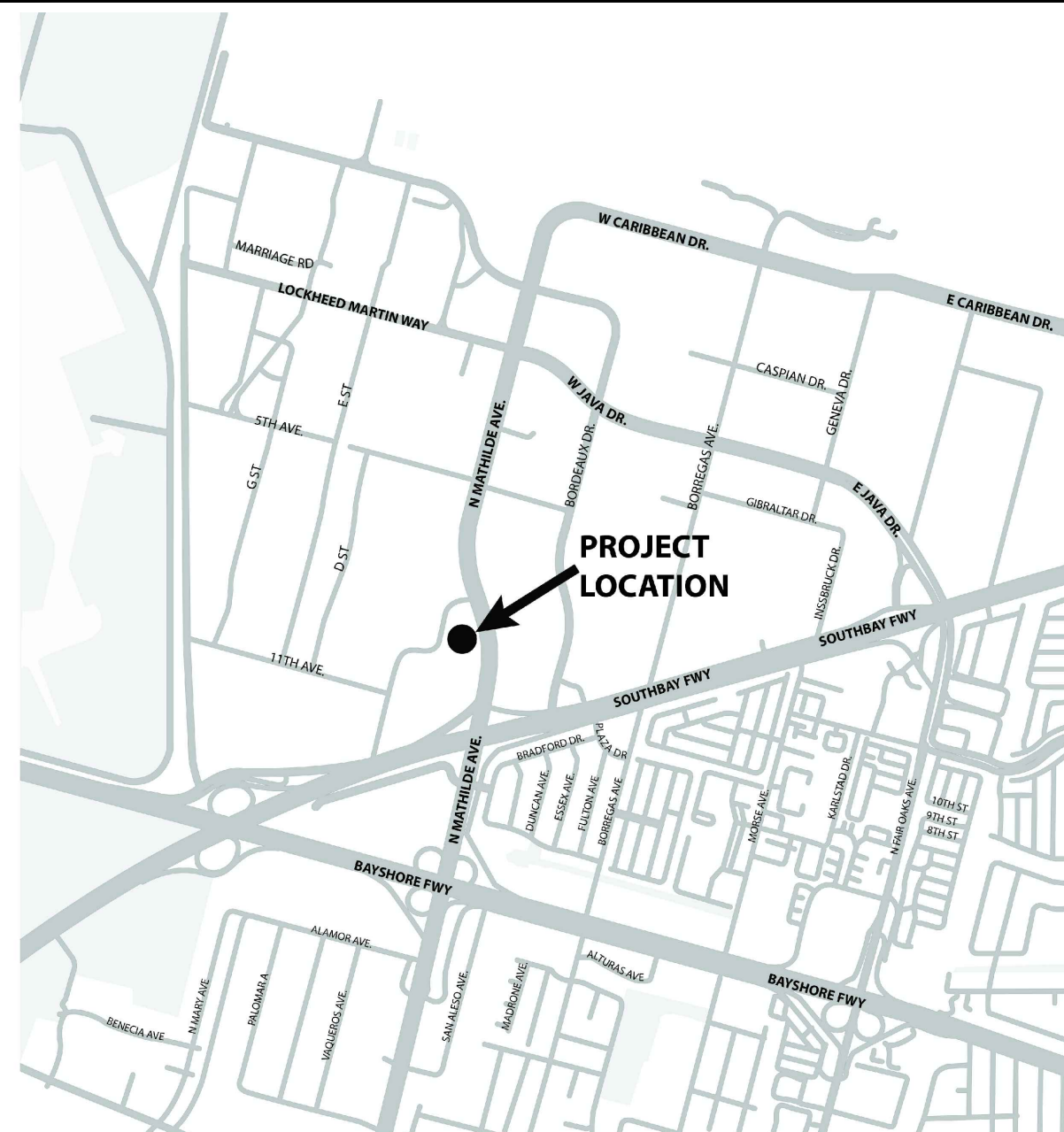
AN EXISTING STEEL FRAMED BUILDING, IDENTIFIED AS BUILDING 1002, IS A TWO STORY OFFICE BUILDING SURROUNDING A CENTRAL COURTYARD WITH APPROXIMATELY 51,000+/- SQ. FT. OF GROSS FLOOR AREA (25,500 SQ. FT. PER FLOOR) THAT WILL RECEIVE SEISMIC STRUCTURAL UPGRADING.

A NEW LOBBY ADDITION OF APPROXIMATELY 7,050 FT. WILL BE CONSTRUCTED AT THE NORTH-EAST CORNER OF EXISTING OFFICE BUILDING 1002. THE NEW LOBBY ADDITION WILL CONTAIN ELEVATORS, STAIRWAY, LOBBY, ENTRY, CIRCULATION AND OTHER FUNCTIONS.

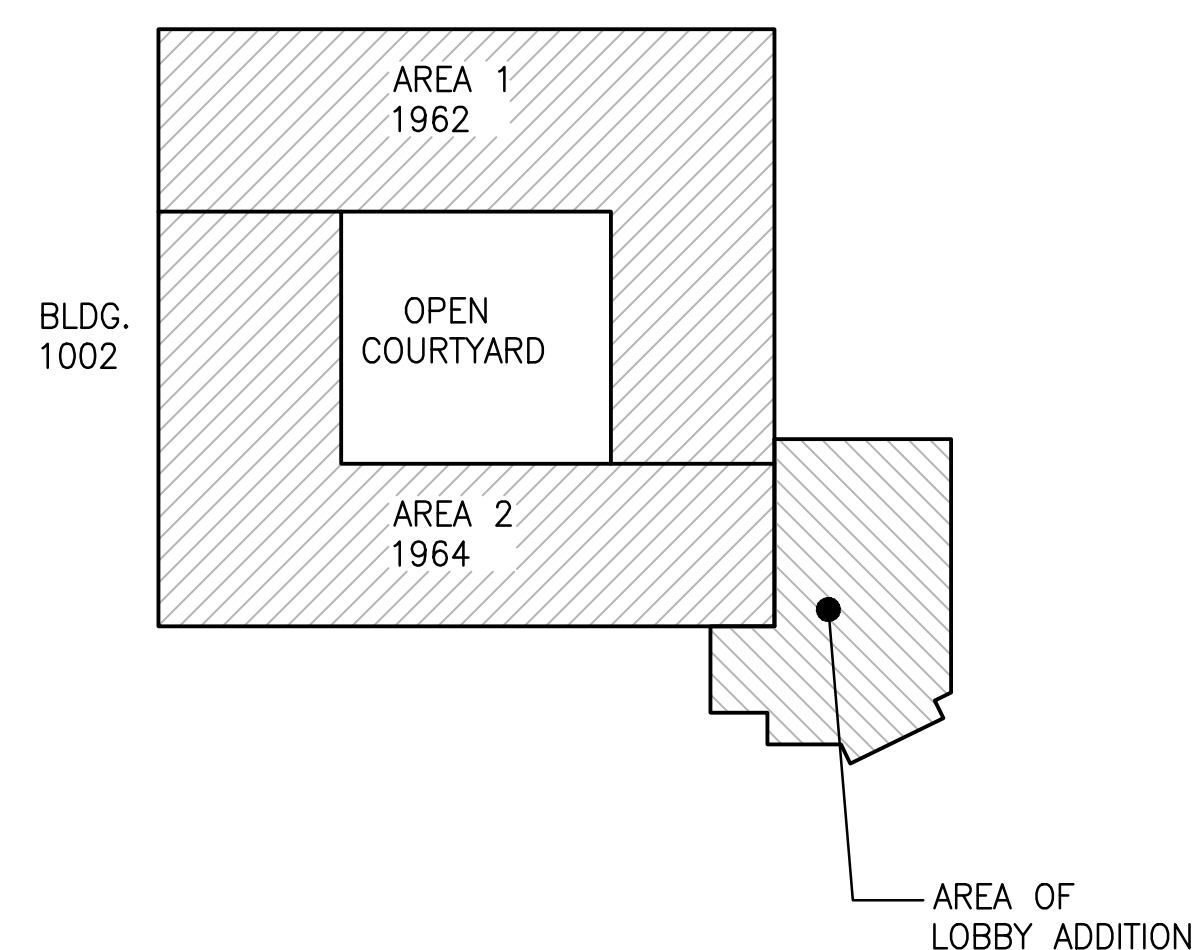
A PORTION OF THE EXISTING BUILDING WILL BE REMODELED ADJACENT TO THE NEW LOBBY ADDITION. THIS REMODELED AREA WILL CONTAIN OFFICES, TOILETS, CIRCULATION ELECTRICAL AND COMMUNICATION ROOMS AND OTHER FUNCTIONS.

SITE UTILITIES WILL BE RELOCATED AND EXTENDED.

VICINITY PLAN



KEY PLAN



Revisions:	
ADDENDUM 2	9/08/14
Date	

CONSULTANTS:



Syska Hennessy Group, Inc.  
425 California Street  
Suite 700  
San Francisco, CA 94104  
Tel: 415.268.9060  
Fax: 415.835.0385  
www.syska.com

Stamp and Signature

ARCHITECT/ENGINEERS:



ENGINEERS ARCHITECTS  
ONE KAISER PLAZA SUITE 445  
OAKLAND CALIFORNIA 94612  
TEL 510.271.6701 FAX 510.271.6707  
©THE KPA GROUP 2013  
KPA Project No. 563.00

Drawing Title  
COVER SHEET

Approved Project Director  
-  
VAPAHCS PLANNING AND ENGINEERING

Project Title  
NEW OFFICE  
AND LABS

Location  
1080 INNOVATION WAY, SUNNYVALE, CA 94085  
Date  
05/09/2014  
Checked  
FMR  
Drawn  
KPA

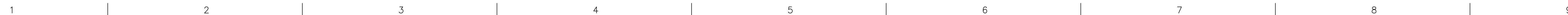
Project Number  
640-379  
Building Number  
1002  
Drawing Number  
68000  
Dwg. of






Office of  
Construction  
and Facilities  
Management

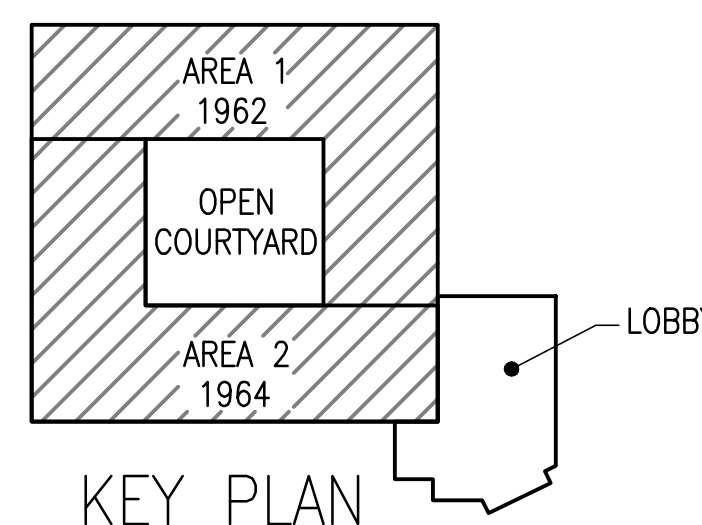


FULLY SPRINKLERED





1. ALL EXISTING BUILDING INFORMATION IS BASED ON ORIGINAL CONSTRUCTION DOCUMENTS. ORIGINAL CONSTRUCTION DOCUMENTS ARE INCLUDED FOR REFERENCE.
2.  DENOTES NEW STEEL DIAGONAL BRACES
3. , , ....  DENOTE EXISTING CONNECTION IMPROVEMENTS. SEE SS302 AND SS303.
4.  WELD EACH SIDE OF NEW BEAM TOP FLANGES TO EXISTING DECK WITH 1/8 INCHES FILLET WELDS, 2 INCHES LONG @ 24 INCHES, TYPICAL.



**1 ROOF FRAMING PLAN**

$3/32" = 1'-0"$

0 4' 8' 12' 16' 20'

UPDATED: 9/8/2014 11:46 AM

