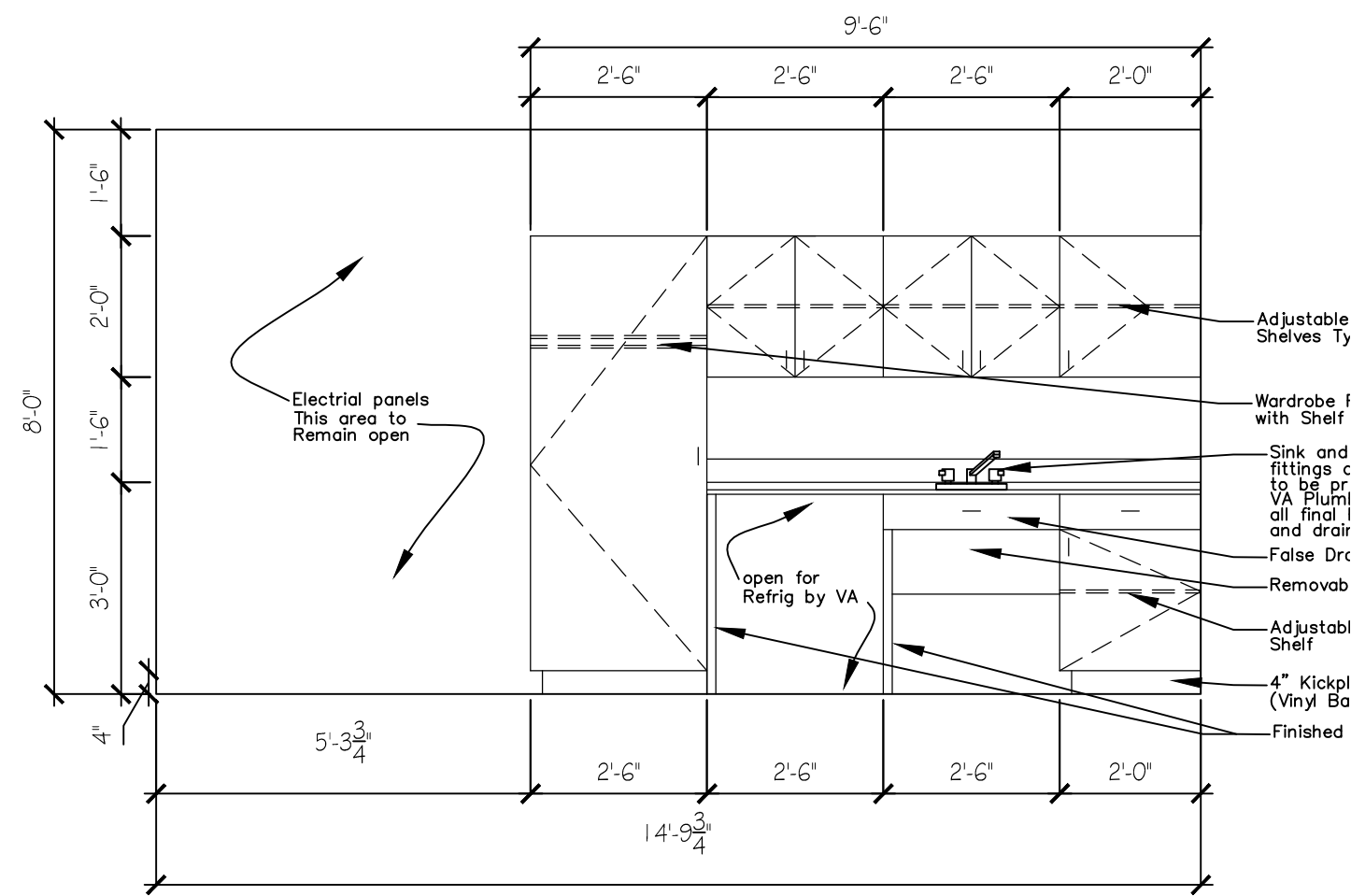
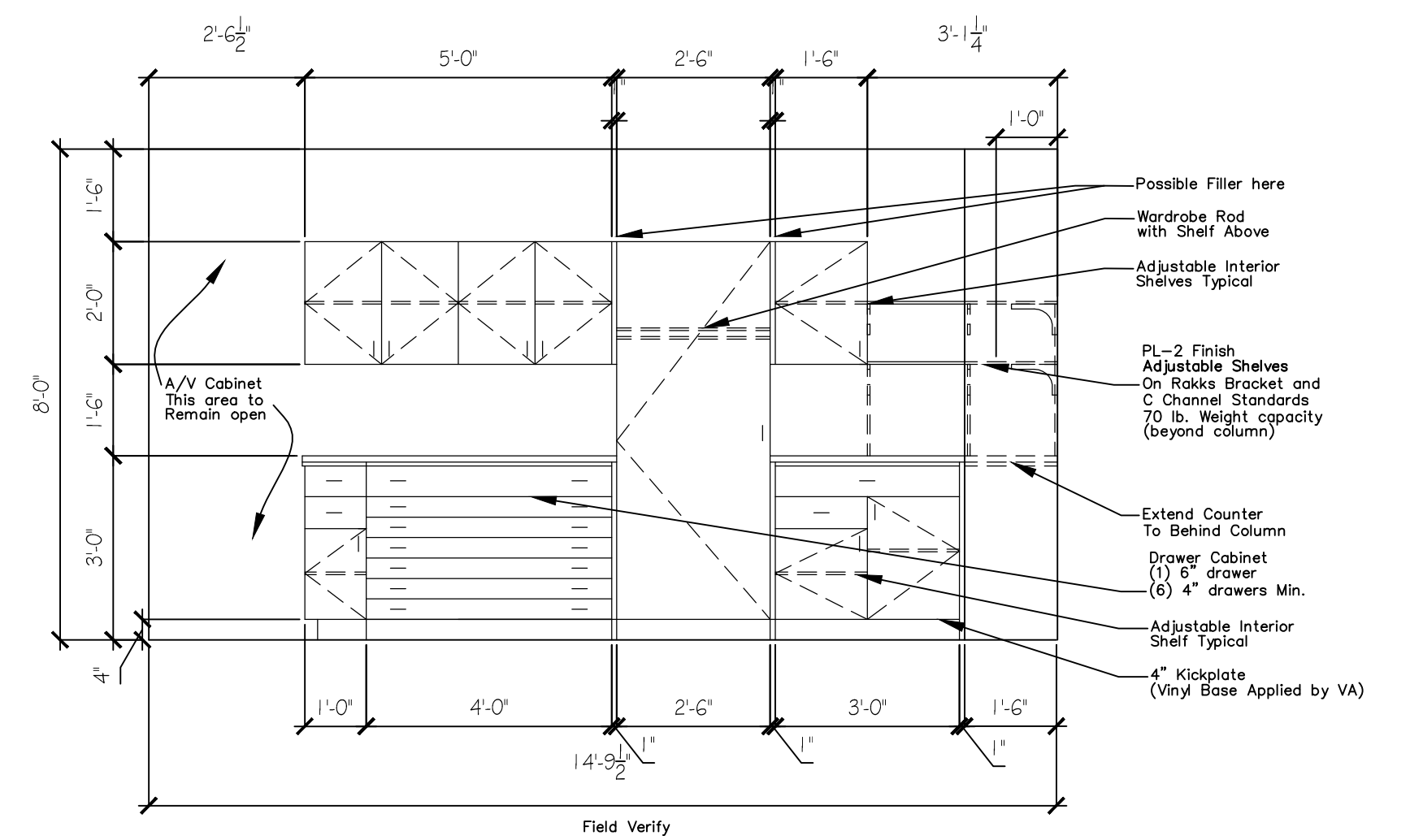


1 Proposed Floor Plan – Sacristy Room
SK-2 Scale: 1/2" = 1'-0"



Elevation A



Elevation B

2 Elevations
SK-2 Scale: 1/2" = 1'-0"

Finish Legend		Hardware Legend		Plumbing Legend	
PL-1	Formica Beluga Beige 3698-58 Matte Finish – Countertops	H-1	Hafele Carmel Collection Door and Drawer Pulls 107.18.612 Brushed Nickel Finish 115mm x 19mmx96mmx24mm	S-1	Elkay Gourmet Celebrity Stainless Stell Single Bowl Top Mount Sink CR17213 17" x 21 1/4" x 6 7/8" 3 hole, 3 1/2" size, LK99 Drain fitting
PL-2	Formica Earthen Warp 5880-58 Matte Finish – Wall and Base Cabinets	H-2	Rakks C style wall standard SC series – clear anodized aluminum finish with BU Universal Bracket for 70 lb. min. weight	F-1	Chicago Faucet – Hot and cold water sink faucet 1100-G2E3-317AB 8" center, 5 1/4" rigid swing gooseneck spout with 4" wristblande handles or 895-317ABCP 4" center 3 1/2" rigid swing gooseneck spout with 4" wristblade handles
PL-3	Standard White Melamine finished shelving for all interior cabinet finishes including but not limited to all surfaces of cabinet interiors, interior shelves and drawer interiors	H-3	Rakks C style wall standard SC series – clear anodized aluminum finish		
PL-4	Formica Oiled Olivewood Artisan Finish #5481-43 – interior and exterior finish of cabinetry and doors	H-4	Hafele Aximat 300 Hinges		
		H-5	Hafele Sliding and Roller shutter system – pocket door hinges Accuride series		

General Notes

- All Drawers shall have Accuride full extention or telescoping full extension, self closing ball bearing drawer slides
- All Cabinet doors shall have adjustable concealed hinges unless noted otherwise
- All Cabinet bases shall have 4" kicks ready for vinyl cove base – to be supplied and installed by VA
- Contractor shall provide sink and faucet with drain fitting, VA Plumbing shop to complete all necessary water supply and drain hookups.
- Contractor shall be responsible to field verify all dimensions and provide full millwork shop drawings for VA review and approval
- All Countertops shall be post-formed front edge.
- Only Countertop at sink area shall receive a 4" back splash.
- All Cabinet with exposed sides visible shall received finished surfaces with called out plastic laminate finish to match cabinet faces.

<small>UNAUTHORIZED ALTERATION OR ADDITION TO THIS DRAWING IS A VIOLATION OF SECTION 7209, SUBDIVISION 3 OF THE NEW YORK STATE EDUCATION LAW</small>	NO.	DATE	REVISIONS
PROJECT PROJ. ARCHITECT: DESIGNED BY: DCS DRAWN BY: DCS CHECKED BY: APPROVED BY:			
SCALE: AS NOTED			
STRATTON VA MEDICAL CENTER 113 HOLLAND AVENUE, ALBANY, NEW YORK SK-2 Chapel Sacristy Chapel Renovations DATE: 05.14.2014 PROJ NO. SHEET: 1 OF 1			