

## **THIS IS A SPECIAL NOTICE TO CORRECT THE PRESENTATION OF THE FLOOR PLANS**

This is a combined synopsis/solicitation for commercial items prepared in accordance with the format in FAR Subpart 12.6, as supplemented with additional information included in this notice. This announcement constitutes the only solicitation; quotes are being requested and a written solicitation will not be issued. This solicitation VA251-14-Q-0679 is issued as a request for quotes (RFQ). This solicitation document and incorporated provisions and clauses are those in effect through Federal Acquisition Circular (FAC) 2005-12. The North American Industry Classification System (NAICS) number is 332510 and the business size standard is 500 employees. Requestors shall state their business size on their proposal. They must perform installation to exact specifications of the Herman Miller brand. All responsible sources may submit a proposal which shall be considered by the contracting officer.

### **Requested Items:**

This is a healthcare facility STAFF LOCKER ROOM LOCKER requirement. This is a new facility. It is essential that the locker room spaces are furnished with enough lockers to accommodate the new and immediate future staff -expected count 300 staff. The spaces are divided into (2) - 1 side accommodating women's shower and enough space for (72) 12w x 15d single units or (144) two tier units and 1 side accommodating men's shower and enough space for (72) 12w x 15d single units or (144) two tier units. The preferred layout is attached for verification. Two Tier units @ 72" overall height are requested with an optional sloped top and 3" optional base included. Lockers will accommodate a removable combination lock.

There is also need for (1) count 36" pedestal for each locker room. (2 total).

Because units will be nearer a humidity source and because of the need for odor control in a close space and because of the need for low maintenance and high durability, these lockers and benches will be HDPE (high-density polyethylene) which will hold up to the use-abuse and have a 20-year warranty against rust, corrosion and delamination.

Need to be direct ship to location by Sept.30, 2014

Upon award, the VA will require that the bill of materials is tagged by VA PO# for ease of follow-up and installation.

ALL PRODUCTS MUST BE MANUFACTURED IN A FRIENDLY COUNTRY.

REFERENCE UNITED STATES DEPARTMENT OF STATE FOR MORE INFORMATION.

Warranty service and follow-up on product provided shall be offered and provided in a written format for clarification.

### **SECTION B: Requirements:**

(HDPE) locker units and benches

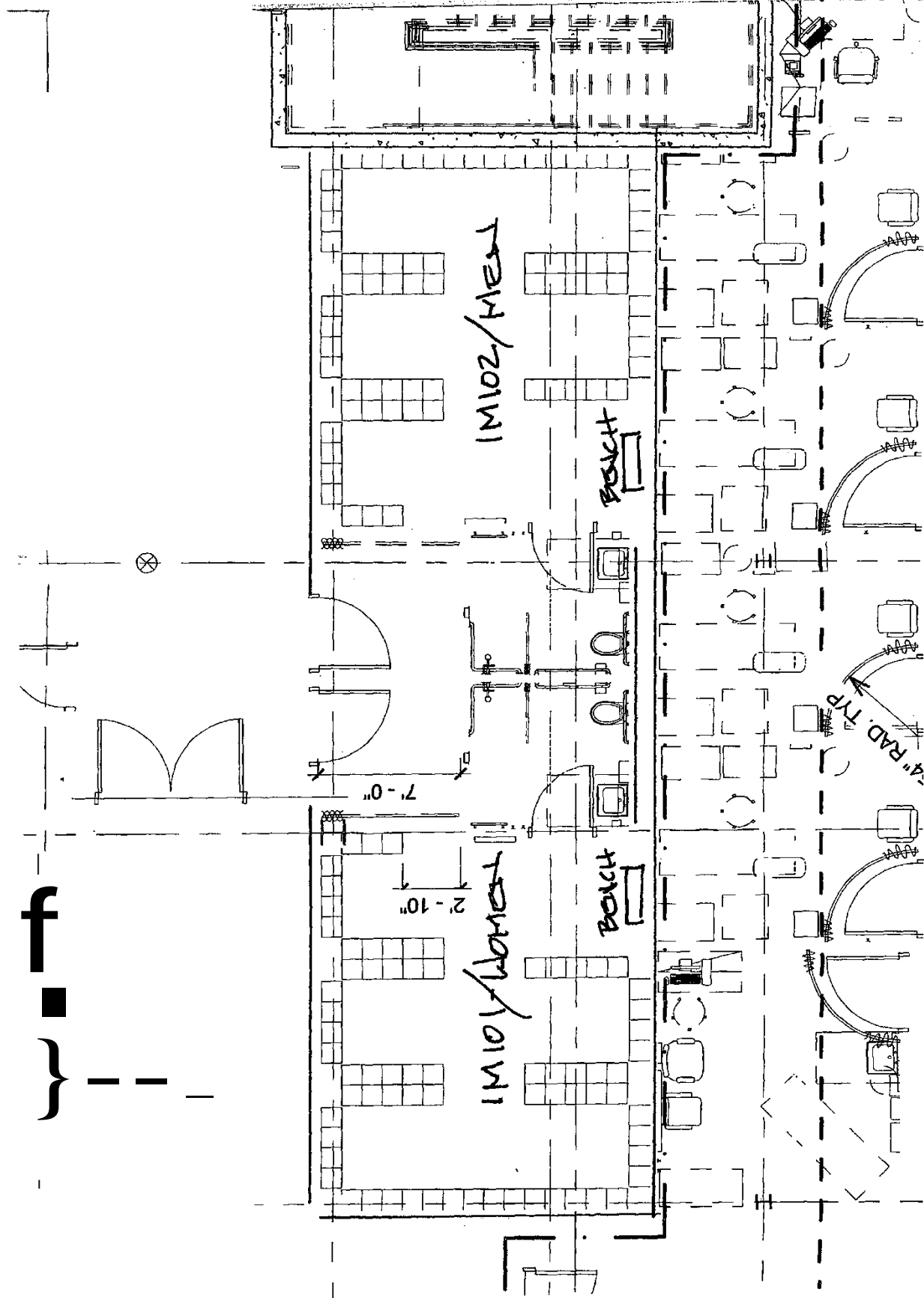
### **SECTION C:**

Delivery will be FOB Destination

Offers shall be submitted to Chris Hinson, Contract Specialist, at [Chris.Hinson@va.gov](mailto:Chris.Hinson@va.gov) no later than Tuesday, September 15, 2014 at 12:00PM, EST. For information regarding this solicitation, please contact Chris Hinson at [Chris.Hinson@va.gov](mailto:Chris.Hinson@va.gov).

STAFF STABLES -  
 WATER ROOMS -  
 WATER UTILITIES.

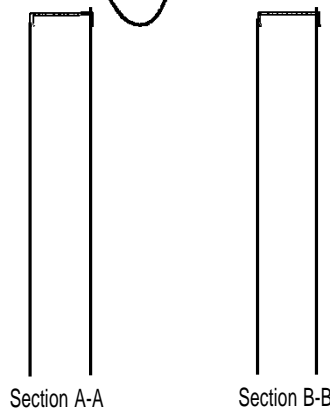
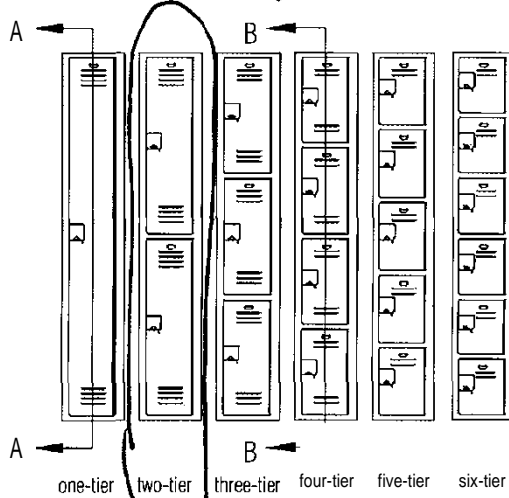
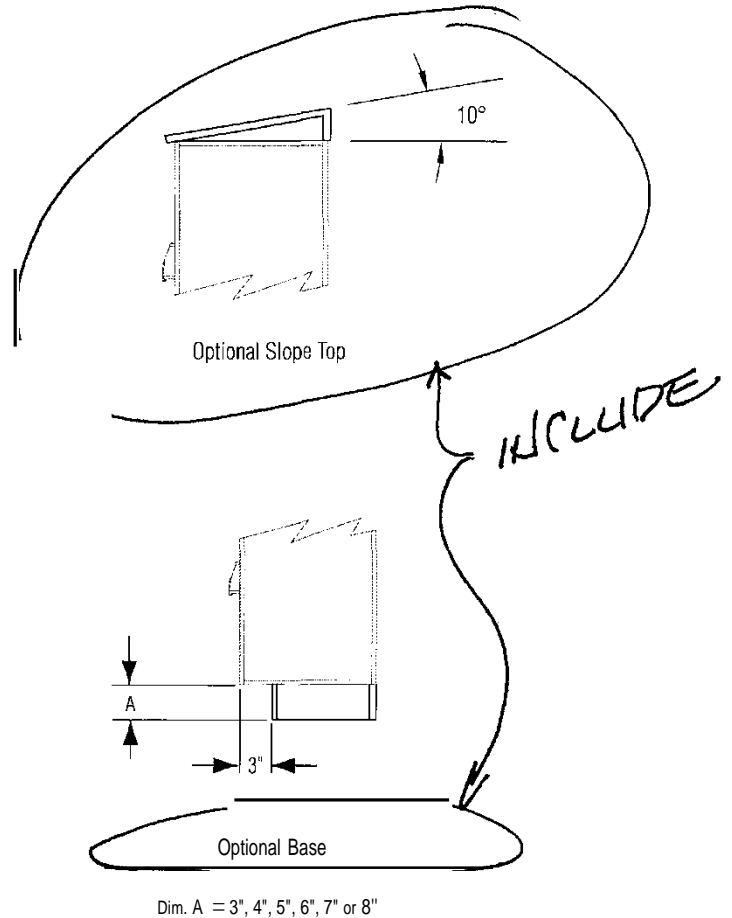
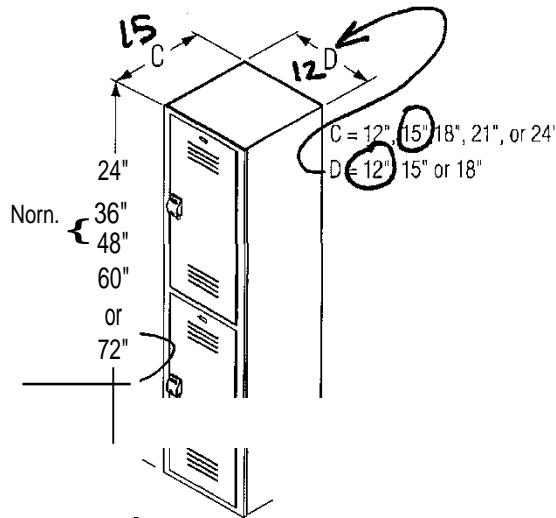
f



QTY: 144 TOTAL  
UNITS



# LENOXLQ,CKER Lenox Locker - Solid Plastic



OL- D Ca lb-E:....

tfVZ7-  
foftt'0

fe.Ae - \-t-\C-L.UPE- ',

(-t--L ) 4?lP<sub>1</sub> f

dc

- Tough, attractive, solid plastic never needs painting; resists dents and scratches
- Impervious to moisture -lockers will not rust or delaminate
- Made from 30% pre-consumer recycled HOPE plastic
- Durable, vandal resistant all-welded construction
- Wide range of sizes, tiers, colors and options
- ADA compliant handle operation
- 20-year warranty against rust, delamination or breakage under normal use\*
- Lockers ship assembled; optional top, end panel and base assembled at the job site
- US Patent Numbers: 6,685,285 -6,792,661 -6,793,299 -7,029,078 -7,223,317 -7,278,695 -7,510,249 -7,699,412 -7,789,471 -8,113,602
- Other Patents Pending

### Construction - Standard Features

#### Sizes

Standard Sizes:

Wide Deep  
Tiers  
Actual Locker Height  
Tall  
See Table

	24"1As"	36"1/2"	48"3/4"	60"	72"
1	X	X	X	X	X
4	X	X	X	X	X
5		X	X	X	X
6			X	X	X

#### Doors and Frames

Constructed of  $W$ " thick High Density Polyethylene (HOPE) with homogeneous color and a matte finish texture. Dirt or graffiti are easily removed with standard industrial cleaners. Frames are welded to locker box to provide a secure, rigid assembly. Doors have ventilation slots.

#### Sides, Tops, Bottoms, Dividers and Shelves

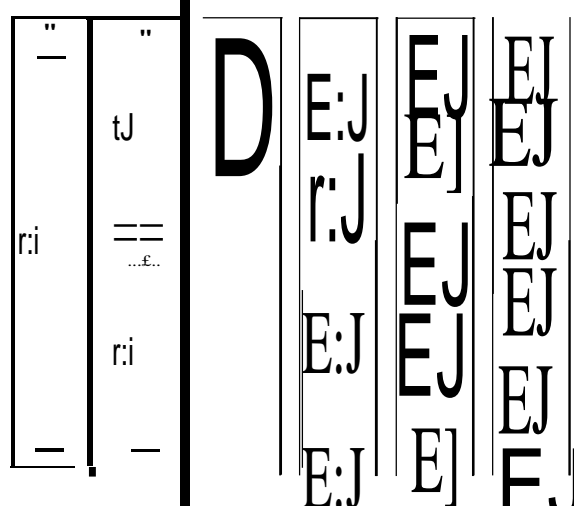
Constructed of  $Y$ " thick white HOPE with a smooth finish. Sides and back of box are formed from a single sheet of HOPE with fused corners. Top, bottom and dividers are welded to frame without metal fasteners or dovetail joints. Shelves, provided in one-tier lockers only, are slid into corresponding grooves in sides and back. Shelves are located 12" from locker top. Gussets, standard in one-tier lockers only, provide added support for the box.

#### Latch Bar

Full-length latch bar is constructed of  $Y$ " thick 100% pre-consumer recycled black High Density Polyethylene (HOPE) with a smooth finish. Runs entire length of door, providing a continuous security latching system. Latch lifts up to open and returns to closed position after door is closed. Latch bar is secured to locker door with stainless steel security torx-head shoulder screws.

\* Normal use further defined as lockers installed in a climate-controlled environment, away from direct sunlight.

<sup>1</sup>Dove Stone locker will have white hinge and handle. Starry Night locker will have black hinge and handle.



#### Hinge

Heavy-duty, full-length piano hinge is constructed of 18 gauge, type 304 stainless steel. Hinge wraps around edges of the door and the frame and is secured with stainless steel security torx-head screws. Hinge is powder coated to match locker color<sup>1</sup> and is field replaceable.

#### Handle

Constructed of injection molded plastic. Ergonomically designed handle is ADA compliant -operates with less than 5 lbs. of force. Handle is secured through latch bar to door with stainless steel security torx-head screws.

#### Hasp

Constructed of 12 gauge stainless steel. Accepts standard padlocks with  $\frac{1}{2}$ " diameter (nominal). (Long shackle padlocks should not be used.) Secured to door behind latch bar with stainless steel screws.

#### Coat Hook

Double hook constructed of black polycarbonate. Furnished in 36", 48", 60" and 72" one-tier and 60" and 72" two-tier lockers only. Hook hangs centered under shelves in one-tier and under locker top in two-tier lockers. Secured to shelves and tops with stainless steel screws.

**m** Wood bases are not recommended.

