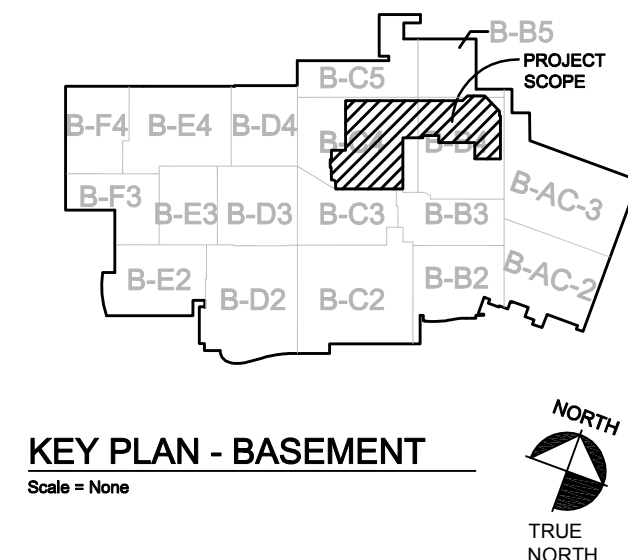
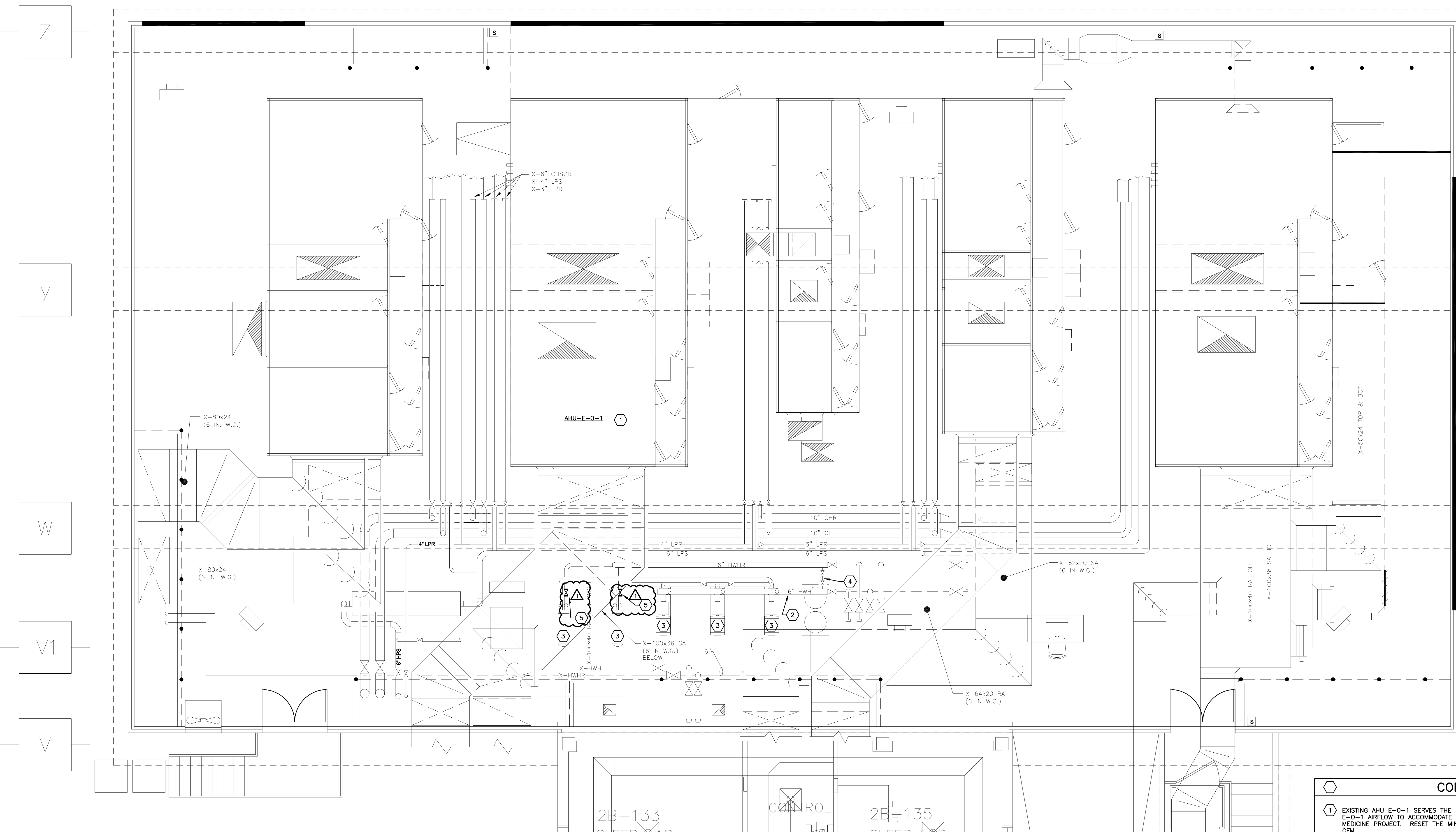


three inches = one foot
one and one half inch = one foot
one inch = one foot
three quarters inch = one foot
one half inch = one foot
one quarter inch = one foot
one eighth inch = one foot



27 29 30 32 33 34 35 36



EAST PENTHOUSE HVAC PLAN
SCALE: 1/4" = 1'-0"
0' 2' 4' 8' 16'

- CODED NOTES:**
- 1 EXISTING AHU E-0-1 SERVES THE NEW NUCLEAR MEDICINE PROJECT. REBALANCE AHU E-0-1 AIRFLOW TO ACCOMMODATE THE ADDITIONAL 18,000 CFM SERVING THE NEW NUCLEAR MEDICINE PROJECT. RESET THE MINIMUM OUTSIDE AIR TO 30% OF MAXIMUM UNIT SUPPLY CFM.
 - 2 FURNISH AND INSTALL CHAM-CLIF AND PRESSURE SENSOR TO HEATING HOT WATER SUPPLY. RESET DIFFERENTIAL PRESSURE SETPOINT FOR HEATING HOT WATER PUMPS TO MEET FLOW REQUIREMENTS OF PROJECT.
 - 3 THREE EXISTING PUMPS AND TWO EXISTING HEAT EXCHANGERS MAKE-UP THE HEATING HOT WATER REHEAT SYSTEM SERVING THIS PROJECT AS WELL AS ADJOINING AREAS IN THE BASEMENT. CONFIGURE AND COMMISSION CONTROLS AND NEW PRESSURE SENSOR FOR THIS SYSTEM.
 - 4 EXISTING DIFFERENTIAL PRESSURE SENSOR. MODIFY CONTROLS TO USE THE NEW DIFFERENTIAL PRESSURE SENSOR TO CONTROL THE PUMP VFDs IN LIEU OF THE EXISTING SENSOR.
 - 5 PROVIDE NEW 4" TWO POSITION MOTOR OPERATED 24 VOLT ISOLATION CONTROL VALVE.

		CONSULTANTS:				ARCHITECT:		Drawing Title		Project Title		Project Number		Office of Facilities Management	
		 2217 East 9th Street, Suite 350 Cleveland OH 44115-1257 216-875-0100 / (F) 216-875-0111 barberhoffman.com		 13212 Shaker Square Suite 204 Cleveland, Ohio 44120 P. 216.752.1800 F.216.752.3833		EAST PENTHOUSE HVAC PLAN		EXPAND AND RENOVATE NUCLEAR MEDICINE AND RADIOLOGY		541-14-101					
								Approved: Project Director		Location		Building Number		1-H7	
										VAMC - WADE PARK		1			
										Date		Checked		Drawn	
										1-17-2014		BMW		DAD	
												Dwg. of			