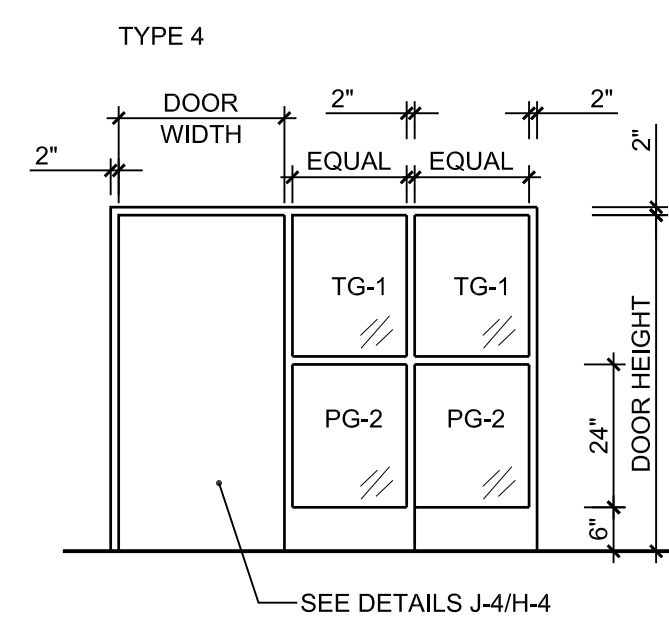
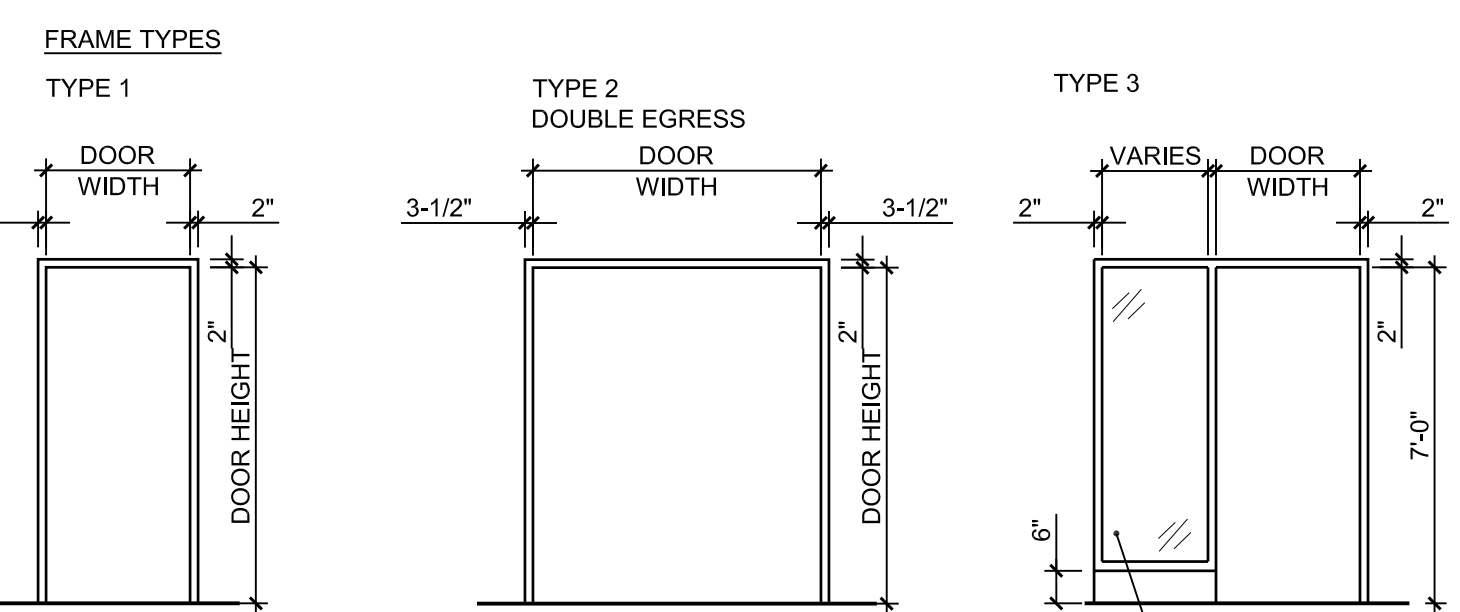
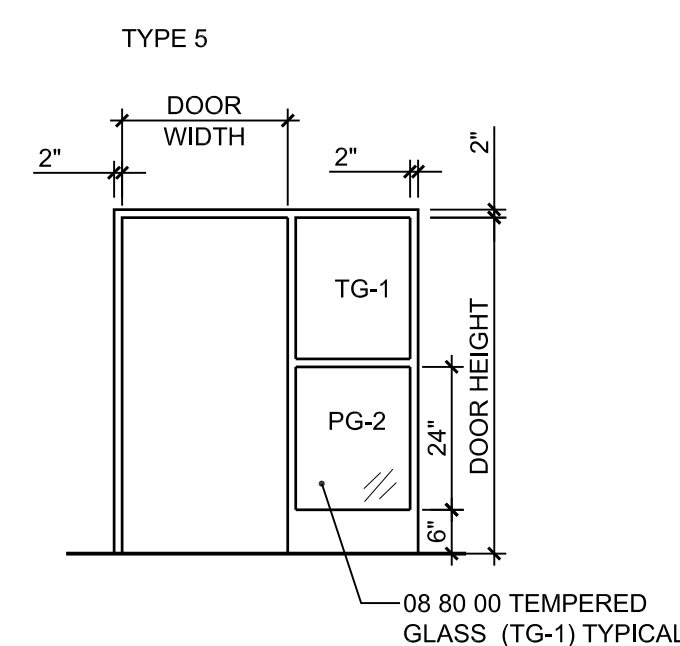


- [illegible]



LEAD LINED WINDOW JAMB

SCAN ROOM

SEE DETAIL

1 1/2" TYP

2" HOLLOW METAL FRAME W/LEAD SHIELDING - SEE WALL TYPE FOR THICKNESS -

2" ON LEAD LINED SIDE

1 3/8" ON CONTROL ROOM SIDE

ATTACH PER MFR. RECOMMENDATIONS - GROUT SOLID

CONTROL ROOM

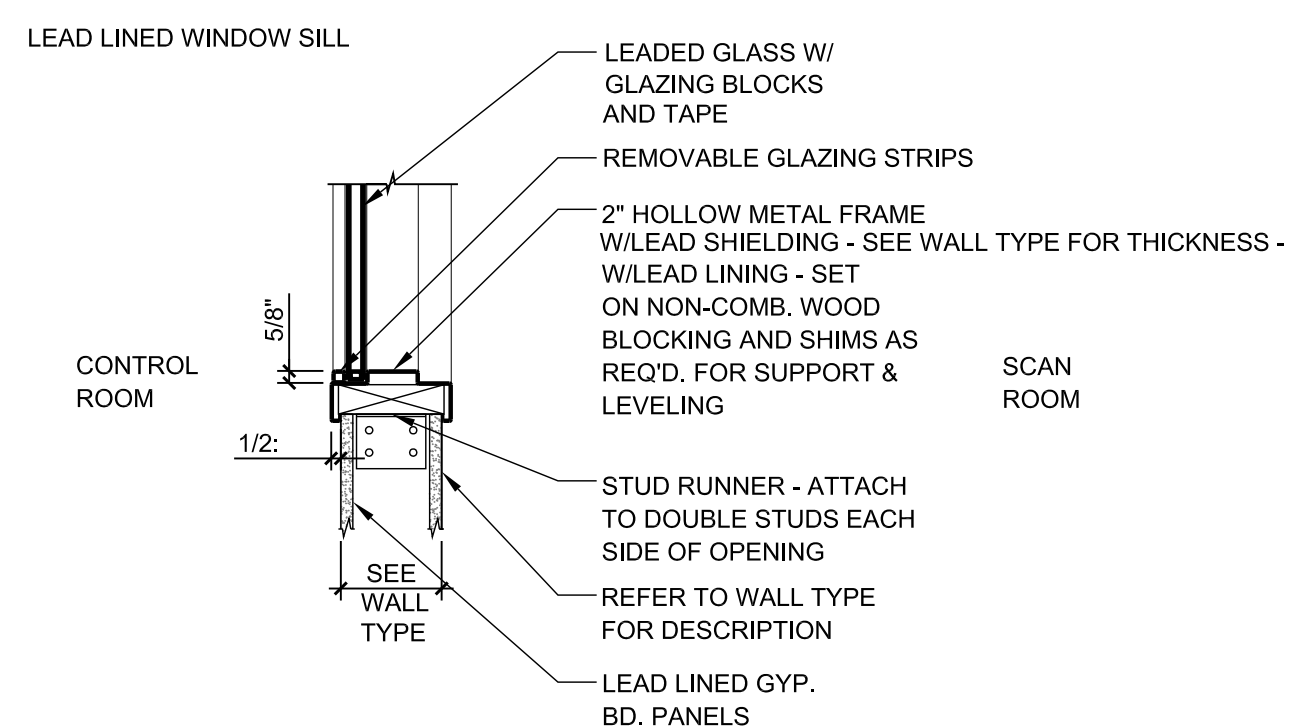
1/2" TYP

DOUBLE STUDS (WELDED) EACH SIDE OF FRAME OPENING

LEADED GLASS W/ GLAZING BLOCKS AND TAPE

REMOVABLE GLAZING STRIPS

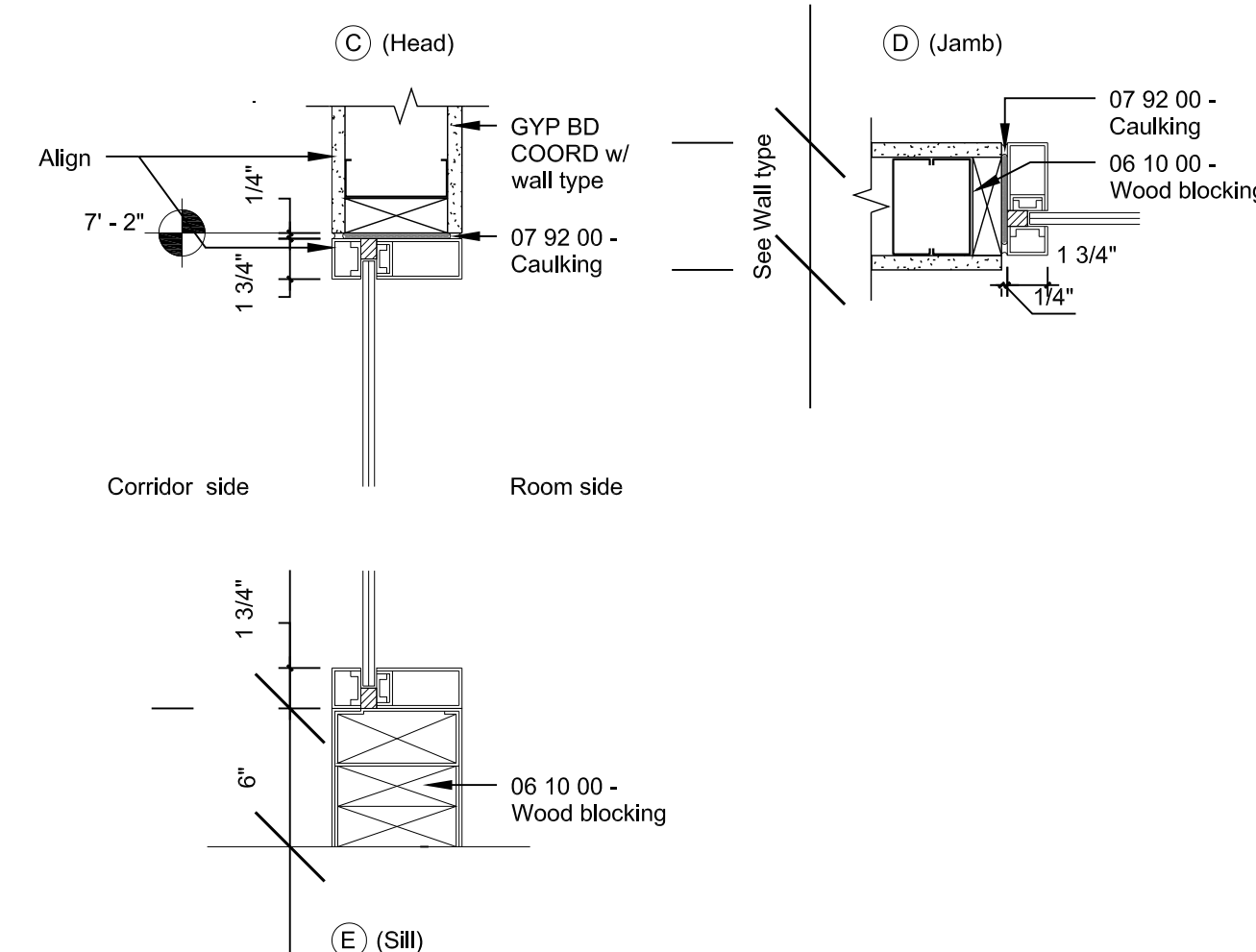
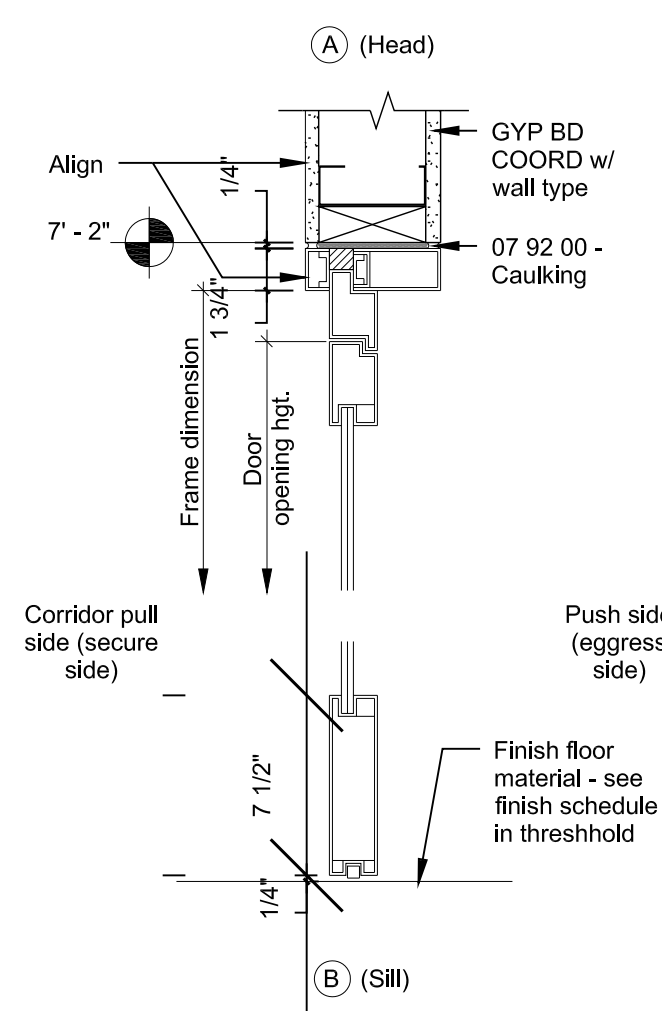
REFER TO WALL TYPE FOR DESCRIPTION



DOOR					FRAME					
NUMBER	WIDTH	HEIGHT	TYPE	LABEL	MATERIAL	TYPE	JAMB	HEAD	NOTES	
BC-402	3'-6"	7'-0"	C	-	ALUM	4	J-4	H-4	5, 6	
BC-402A	PR 4'-0"	7'-0"	B	20 MIN	HM	2	J-2	H-2		
BC-425	4'-0 1/11'-0"	7'-0"	A	45MIN	HM	1	J-1	H-1		
BC-430	PR 3'-8"	7'-0"	B	-	HM	2	J-2	H-2	6	
BC-431	3'-0"	7'-0"	A	45MIN	HM	1	J-1	H-1		
BC-432	3'-0"	7'-0"	A	-	HM	1	J-1	H-1		
BC-433	4'-0"	7'-0"	A	-	HM	1	J-1	H-1		
BC-434	4'-0"	7'-0"	A	-	HM	1	J-1	H-1		
BC-435	4'-0"	7'-0"	A	-	HM	1	J-1	H-1		
BC-436	4'-0"	7'-0"	A	-	HM	1	J-1	H-1		
BC-437	4'-0"	7'-0"	A	-	HM	1	J-1	H-1		
BC-441	3'-0"	7'-0"	A	-	HM	1	J-1	H-1		
BC-442	3'-0"	7'-0"	A	-	HM	1	J-1	H-1		
BC-443	3'-0"	7'-0"	A	-	HM	1	J-1	H-1		
BC-444	3'-0"	7'-0"	A	-	HM	1	J-1	H-1		
BC-445	4'-0"	7'-0"	A	-	HM	1	J-1	H-1		
BC-446	3'-0"	7'-0"	A	-	HM	1	J-3	H-3	4	
BC-446A	3'-0"	7'-0"	A	-	HM	1	J-1	H-1	4	
BC-446B	3'-0"	7'-0"	A	-	HM	1	J-1	H-1	4	
BC-447	4'-0"	7'-0"	A	-	HM	1	J-1	H-1		
BC-448	3'-0"	7'-0"	A	-	HM	1	J-3	H-3	4	
BC-449	3'-0"	7'-0"	A	-	HM	1	J-1	H-1		
BC-450	PR 3'-8"	7'-0"	B	20MIN	HM	2	J-2	H-2	6	
BC-451	3'-0"	7'-0"	A	-	HM	1	J-1	H-1		
BC-452	4'-0 1/11'-0"	7'-0"	A	-	HM	1	J-1	H-1		
BC-453	4'-0 1/11'-0"	7'-0"	A	-	HM	1	J-3	H-3	4	
BC-454	3'-0"	7'-0"	A	-	HM	1	J-3	H-3	4	
BC-454A	3'-0"	7'-0"	A	-	HM	1	J-3	H-3	4	
BC-454B	3'-0"	7'-0"	A	-	HM	1	J-3	H-3	4	
BC-461	3'-0"	7'-0"	A	-	HM	1	J-1	H-1		
BC-462	3'-0"	7'-0"	A	-	HM	1	J-1	H-1		
BC-465	3'-0"	7'-0"	A	-	HM	1	J-1	H-1		
BC-466	3'-0"	7'-0"	A	45MIN	HM	1	J-1	H-1		
BC-467	3'-0"	7'-0"	A	-	HM	1	J-1	H-1		
BC-468	4'-0 1/11'-0"	7'-0"	A	-	HM	1	J-3	H-3	4	
BC-470B	PR 3'-8"	7'-0"	B	-	HM	2	J-2	H-2	6	
BC-470BA	PR 3'-8"	7'-0"	B	20MIN	HM	2	J-2	H-2	6	
BC-471	3'-0"	7'-0"	A	-	HM	1	J-1	H-1		
BC-471A	3'-0"	7'-0"	A	-	HM	1	J-1	H-1		
BC-472	3'-0"	7'-0"	A	-	HM	1	J-1	H-1		
BC-473	3'-6"	7'-0"	A	-	HM	1	J-1	H-1		
BC-474	3'-0"	7'-0"	A	-	HM	1	J-1	H-1	4	
BC-474A	4'-0 1/11'-0"	7'-0"	A	-	HM	1	J-1	H-1		
BC-475	3'-0"	7'-0"	A	-	HM	1	J-1	H-1	4	
BC-475A	4'-0 1/11'-0"	7'-0"	A	-	HM	1	J-1	H-1		
BC-479	3'-0"	7'-0"	A	-	HM	1	J-1	H-1		
BC-500A	PR 3'-8"	7'-0"	B							

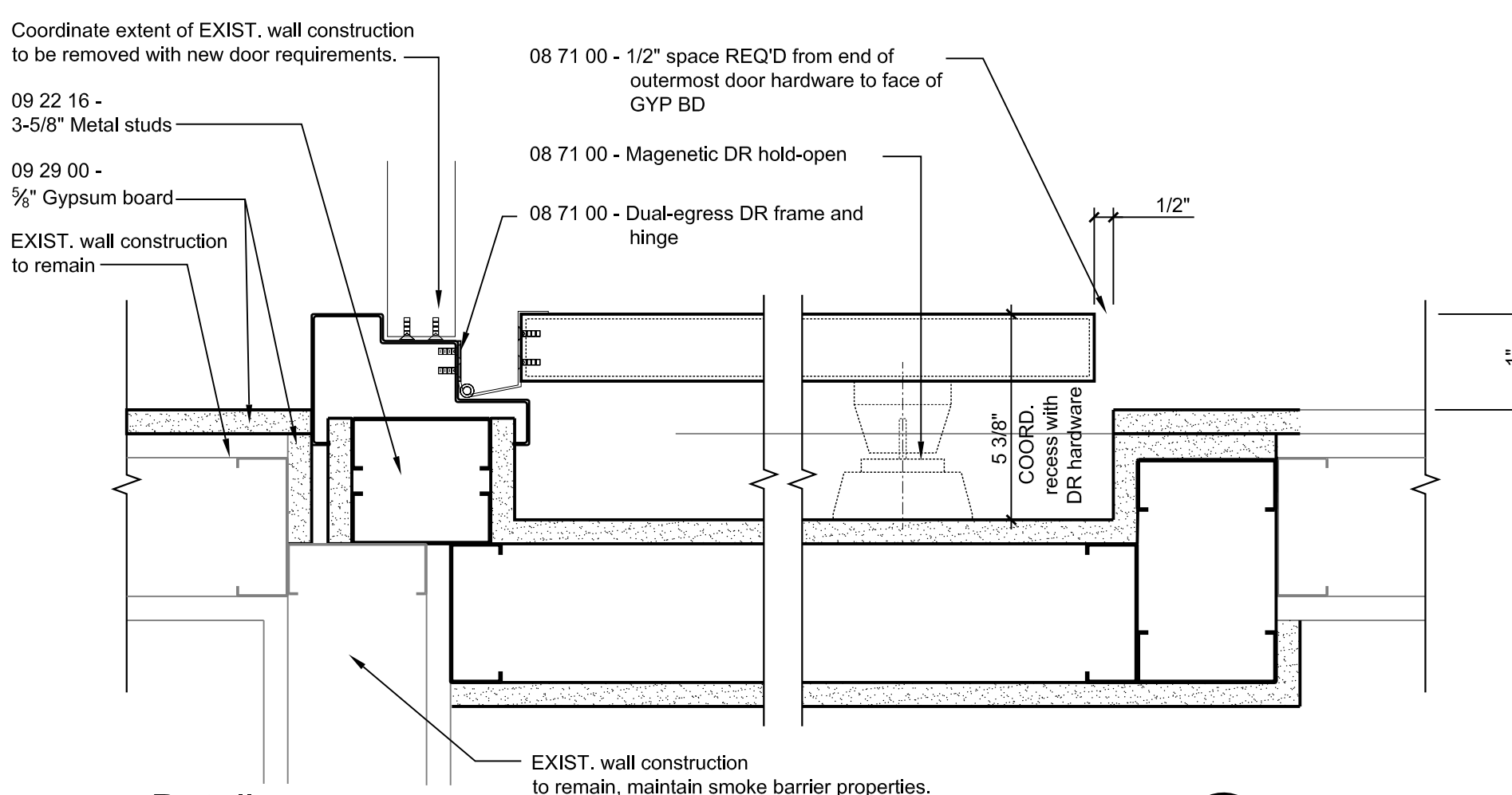
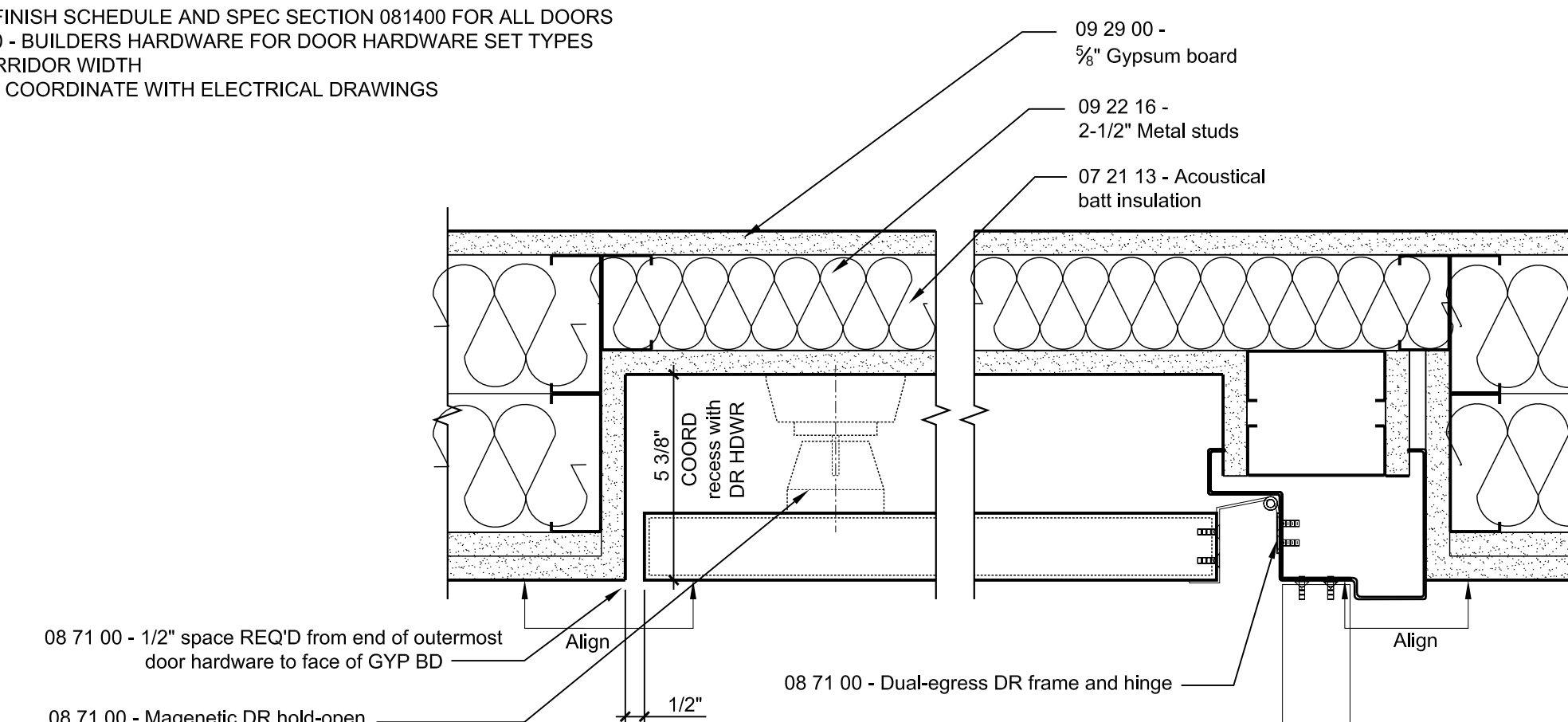
- DOOR SCHEDULE NOTES:
- COORDINATE FINISH WITH FINISH SCHEDULE AND SPEC SECTION 081400 FOR ALL DOORS
 - SEE SPEC SECTION 08 71 00 - BUILDERS HARDWARE FOR DOOR HARDWARE SET TYPE
 - 1 MAGNETIC HOLD OPEN DEVICE REQUIRED - CONNECT TO FACILITY FIRE ALARM. COORDINATE WITH ELEC. DRAWINGS
 - 2 MOUNT ROBE HOOK ON ROOM SIDE OF DOOR BOTH SIDED HORIZONTALLY.
 - 3 PAINT ALL EXISTING DOORS AND FRAMES ON BOTH SIDES
 - 4 LEAD UNED DOOR (SEE WALL TYPE FOR THICKNESS)
 - 5 NON-RATED STOREFRONT-SEE ALSO LIFE SAFETY DRAWING +02.1 FOR SPRINKLERING REQUIREMENTS
 - 6 AUTOMATIC DOOR OPENER - COORDINATE W ELECTRICAL DRAWINGS

TYPE: ALUM Storefront
SEE PLAN FOR
WALL TYPE



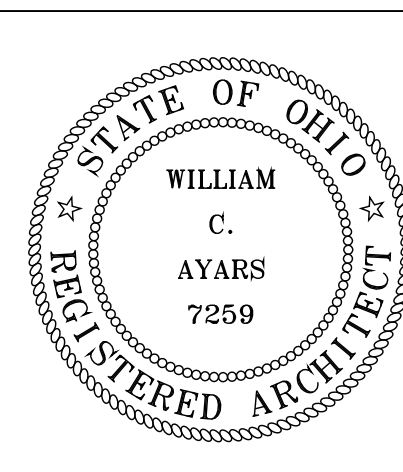
DOOR				FRAME		TYPE	JAMB	HEAD	NOTES
NUMBER	WIDTH	HEIGHT	TYPE	LABEL	MATERIAL				
BB-400A	PR 3'-10"	7'-0"	B	20MINS	HM	2	J-2	H-2	1,2
BB-400AB	4'-0"	7'-0"	B	-	HM	5	J-1	H-1	
BB-426	3'-0"	7'-0"	A	-	HM	1	J-1	H-1	
BB-427	3'-0"	7'-0"	A	-	HM	1	J-1	H-1	
BB-427A	3'-0"	7'-0"	A	-	HM	1	J-1	H-1	
BB-428	3'-0"	7'-0"	A	-	HM	1	J-1	H-1	
BB-429	3'-0"	7'-0"	A	-	HM	1	J-1	H-1	
BB-430	4'-0"	7'-0"	B	20MINS	HM	3	J-1	H-1	
BB-431	3'-0"	7'-0"	A	-	HM	1	J-1	H-1	
BB-432	3'-0"	7'-0"	A	-	HM	1	J-1	H-1	
BB-433	3'-0"	7'-0"	A	-	HM	1	J-1	H-1	
BB-434	3'-0"	7'-0"	A	-	HM	1	J-1	H-1	
BB-435	3'-0"	7'-0"	A	-	HM	1	J-1	H-1	
BB-436	3'-0"	7'-0"	A	-	HM	1	J-1	H-1	
BB-437	3'-0"	7'-0"	A	-	HM	1	J-1	H-1	
BB-438	3'-0"	7'-0"	A	-	HM	1	J-1	H-1	
BB-440	4'-0"	7'-0"	B	20MINS	HM	3	J-1	H-1	
BB-441	3'-0"	7'-0"	A	-	HM	1	J-1	H-1	
BB-442	3'-0"	7'-0"	A	-	HM	1	J-1	H-1	
BB-443	3'-0"	7'-0"	A	-	HM	1	J-1	H-1	
BB-444	3'-0"	7'-0"	A	-	HM	1	J-1	H-1	
BB-445	3'-0"	7'-0"	A	-	HM	1	J-1	H-1	
BB-450	3'-0"	7'-0"	B	20MINS	HM	3	J-1	H-1	
BB-451	3'-0"	7'-0"	B	-	HM	1	J-1	H-1	
BB-452	3'-0"	7'-0"	A	-	HM	1	J-1	H-1	
BB-453	3'-0"	7'-0"	A	-	HM	1	J-1	H-1	
BB-454	3'-0"	7'-0"	A	-	HM	1	J-1	H-1	
BB-455	3'-0"	7'-0"	A	-	HM	1	J-1	H-1	
BB-456	3'-0"	7'-0"	A	-	HM	1	J-1	H-1	
BB-457	3'-0"	7'-0"	A	-	HM	1	J-1	H-1	
BB-458	3'-0"	7'-0"	A	-	HM	1	J-1	H-1	
BB-459	3'-0"	7'-0"	A	-	HM	1	J-1	H-1	
BB-460	3'-0"	7'-0"	B	20MINS	HM	3	J-1	H-1	
BB-461	3'-0"	7'-0"	A	-	HM	1	J-1	H-1	
BB-462	3'-0"	7'-0"	A	-	HM	1	J-1	H-1	
BB-463	3'-0"	7'-0"	A	-	HM	1	J-1	H-1	
BB-464	3'-0"	7'-0"	A	-	HM	1	J-1	H-1	
BB-465	3'-0"	7'-0"	A	-	HM	1	J-1	H-1	
BB-466	3'-0"	7'-0"	A	-	HM	1	J-1	H-1	
BB-467	3'-0"	7'-0"	A	-	HM	1	J-1	H-1	
BB-468	3'-0"	7'-0"	A	-	HM	1	J-1	H-1	
B481	3'-0"	7'-0"	A	-	HM	1	J-1	H-1	
B482	3'-0"	7'-0"	A	-	HM	1	J-1	H-1	
B483	3'-0"	7'-0"	A	-	HM	1	J-1	H-1	

- DOOR SCHEDULE NOTES:**
- COORDINATE FINISH WITH FINISH SCHEDULE AND SPEC SECTION 081400 FOR ALL DOORS
 - SEE SPEC SECTION 08 71 00 - BUILDERS HARDWARE FOR DOOR HARDWARE SET TYPES
- 1 FIELD VERIFY EXISTING CORRIDOR WIDTH
- 2 AUTOMATIC DOOR OPENER COORDINATE WITH ELECTRICAL DRAWINGS



CONSULTANTS:

 <p>FREDRICK, FREDRICK & HELLER ENGINEERS, INC. 672 EAST ROYALTON ROAD BROADVIEW HTS., OHIO 44147 TEL (440) 546-9696 FAX: (440) 546-9699</p>	 <p>BARBER & HOFFMAN, INC. <i>Consulting Engineers</i> 2217 East 9th Street, Suite 350 Cleveland OH 44115-1257 216-875-0100/ (F) 216-875-0111 barberhoffman.com</p>
--	---



● **Perspectus**
architecture

DESIGN AND CONSTRUCTION DOCUMENTS AS INSTRUMENTS OF SERVICE ARE GIVEN IN CONFIDENCE AND REMAIN THE PROPERTY OF PERSPECTUS ARCHITECTURE. THE USE OF THIS DESIGN AND THESE CONSTRUCTION DOCUMENTS FOR PURPOSES OTHER THAN THE SPECIFIC PROJECT NAMED HEREIN IS STRICTLY PROHIBITED WITHOUT THE EXPRESSED WRITTEN CONSENT OF PERSPECTUS ARCHITECTURE.



Department of
Veterans Affairs