



MV CONTROLS, INC.

Manufacturer's Representative

111 Canfield Avenue • Suite A-13 • Randolph, NJ 07869-3007
(973) 927-9090 • Fax (973) 927-1414 • NY Tel (212) 687-9136 • NY Tel (914) 835-3500

November 13, 2009

Regiment Construction Corp.

Attn: Mr. Michael Bassily

Job: VA Hospital, Bronx, NY
2nd Floor Sector "E" M.E.R

Re: Advanced Steam Technologies
Series CX-1000LB Steam to Steam Generator

PO #: TBD

BILL OF MATERIAL

CLEAN STEAM GENERATOR

Includes the following:

- Steam to steam generator
- Model CX-1000LB-30H-7L
- A vertical unfired steam generator with stainless steel construction, with 150 PSI ASME stamp. The unit will be delivered on a skid with all supports necessary for pad mounting. It will be a self-contained unit, including the following accessories:
 - Boiler and separation vessel
 - Water level gauge
 - Level controller with high and low level alarms
 - Pressure gauges
 - Automatic valve to control clean steam pressure
 - System for automatic blowdown
 - Painted steel frame
 - Piping, valves, traps and unions
 - 120 volt control panel and enclosure, pre-wired (supply voltage by contractor)
- Start-up supervision by the Manufacturer or Representative
- Thermal insulation by the contractor
- The unit shall have a clean steam "rated" capacity of 1000 lb/hr of steam at 7 PSIG by using supply steam of 30 PSIG

CONTROL POINTS SHALL BE COORDINATED
TO INTERFACE INTO BMS
AS INDICATED

VA BRONX BUILDING100

PROJECT DATA SHEET

Steam to steam generator

Model CX-1000LB-30H-7L

A vertical unfired steam generator with stainless steel construction, with 150 psi ASME stamp. The unit will be delivered on a skid with all the supports necessary for pad mounting. It will be a self contained unit, including all the following accessories:

Boiler and separation vessel.

Water-level gauge.

Level controller with high and low level alarms.

Pressure gauges.

Automatic valve to control clean steam pressure.

System for automatic blowdown.

Painted steel frame.

Piping, valves, traps and unions.

120 volt control panel and enclosure, pre wired (supply voltage by contractor).

Start-up supervision by the Manufacturer or Representative

*BRONX STEAM GENERATOR
BY ELECTRICAL CONNECTION
TO PROVIDE POWER AS
REQUIRED*

HEAT EXCHANGER CALCULATION

Heat Load 1114392 BTU/h

LMTD 97.58 deg. F

Min. Oversizing 0 %

Fluid

Inlet Temperature 274.03 deg. F

Outlet Temperature 273.00 deg. F

Mass Flow 1199.9 lb/h

Pressure 30.00 psig

Reference Temperature 274.03 deg. F

Density 0.1012 lb/ft3

Heat Capacity 0.5029 BTU/lbF

Thermal Conductivity 0.0157 BTU/ft2hF

Heat Transfer Area 107.6 ft2

Fouling Factor 0.01 ft2hF/BTU

OHTC Clean 232 BTU/ft2hF

OHTC Fouling 98 BTU/ft2hF

Oversize 58 %

Hot Side-Tubes

Saturated steam

274.03 deg. F

273.00 deg. F

1199.9 lb/h

30.00 psig

Cold Side-Shell

Water

60.00 deg. F

240.00 deg. F

1001.0691 lb/h

10.00 psig

150.00 deg. F

61.1585 lb/ft3

0.9973 BTU/lbF

0.3799 BTU/ft2hF

Connections:

Steam inlet 3" 30 psig

Clean Steam outlet 4" 10 psig

Water inlet 1/2" 60 psi potable

110VAC power for controls

Blowdown 1/2"

Potable Fill 1/2"

1000 PPH CLEAN STEAM OUTPUT AT 10 PSI

1200 PPH HP 30 PSI REQUIRED

DESCRIPTION

1000 #/HOUR CLEAN STEAM GENERATOR

*MAIN STEAM PIPE INTO THE
STEAM GENERATOR UNIT SHALL
BE AS FOLLOWS
Discharge: 4"
SECTION: 4"*

Advanced
Steam Technology

Phone 877-629-4843
www.advancedsteam.com

SIZE

FSCM NO

DWG NO

REV

CS 091111 MWWWAB

0

FULL FILENAME

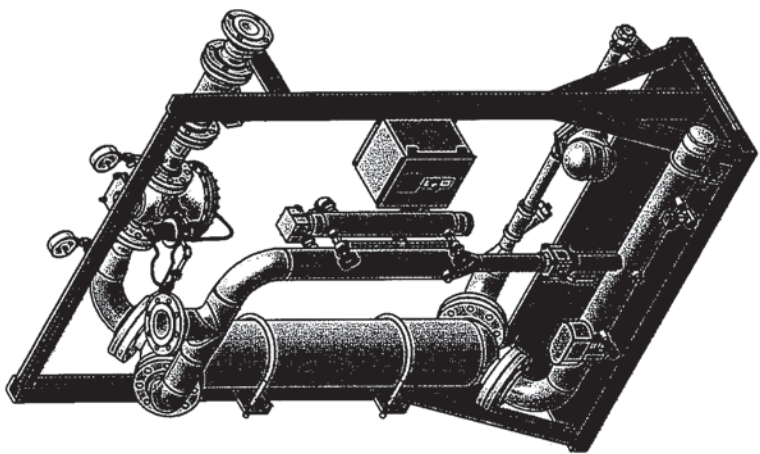
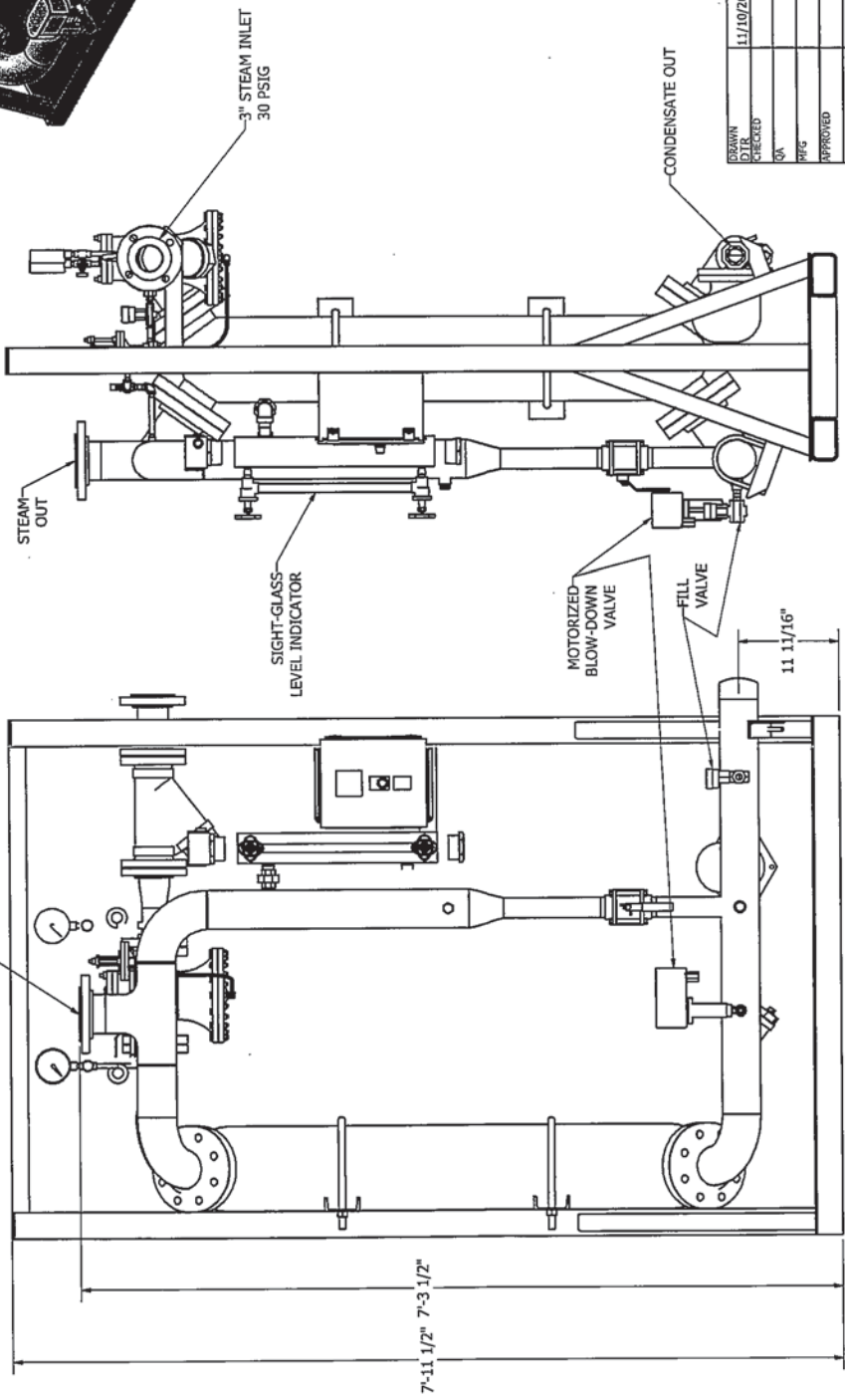
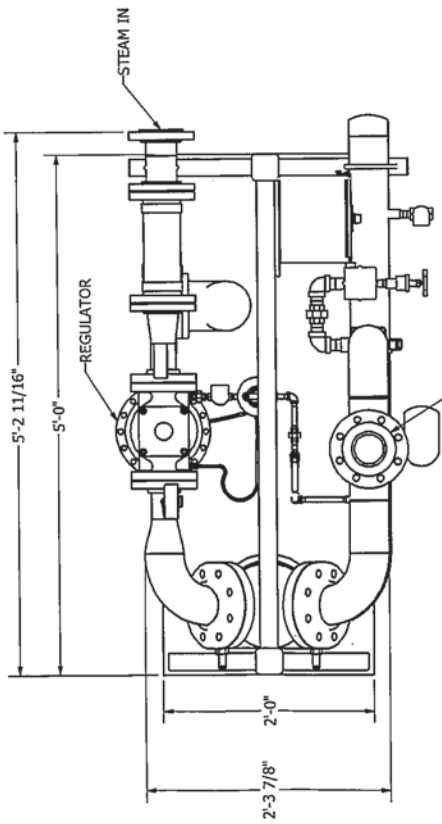
C:\DOCUMENTS AND SETTINGS\WTD\MY DOCUMENTS\ADVANCEDTEAM\CUSTOMERS\VA BRONX\DATA SHEET.VSD

SCALE

1 : 16

SHEET

1 OF 2



DATE	11/10/2009
DRAWN	QA
CHECKED	QA
APPROVED	QA
TITLE	STEAM GENERATOR CONFIGURATION
SIZE	C
DWG NO	1000pph SteamGen
REV	
SCALE	
SHEET	1 OF 1

Advanced
Steam Technology