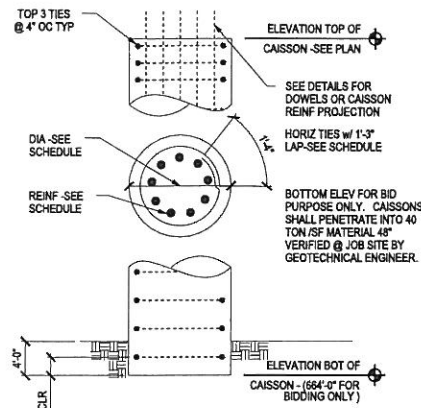


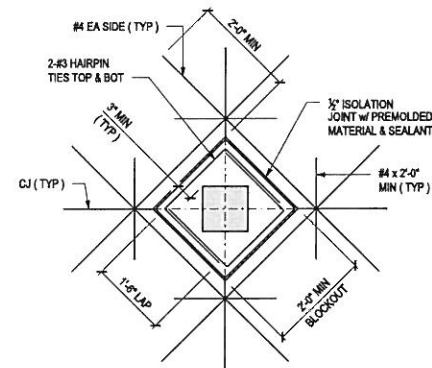
1 TYP FOUNDATION WALL AT GRADE BEAM

CAISSON AND CAP SCHEDULE							
MARK	CAISSON			CAP			REMARKS
	DIA	VERT REINF	TIES	LENGTH x WIDTH	DEPTH	REINF	
A	30"	12 #8	#4 @ 18"	3'-0" x 3'-0"	3'-0"	(4) #6 EA WAY	
B	36"	14 #8	#4 @ 18"	3'-6" x 3'-6"	3'-0"	(4) #6 EA WAY	
C	48"	24 #8	#4 @ 18"	4'-6" x 4'-6"	3'-0"	(6) #6 EA WAY	
D	54"	32 #8	#4 @ 18"	5'-0" x 5'-0"	3'-0"	(6) #6 EA WAY	
E	(4) - 48"	24 #8	#4 @ 18"		3'-0"		SEE 8/1-S8 FOR CAP DIM & REINF
F	(6) - 48"	24 #8	#4 @ 18"		3'-0"		SEE 9/1-S8 FOR CAP DIM & REINF
G	(3) - 30"	12 #8	#4 @ 18"		3'-0"		SEE 13/1-S8 FOR CAP DIM & REINF
H	(2) - 36"	14 #8	#4 @ 18"		3'-0"		SEE 14/1-S8 FOR CAP DIM & REINF
J	20"	4 #6	#3 @ 12"	3'-0" x 3'-0"	2'-6"	(4) #6 EA WAY	EXTEND REINF 20'-0" BELOW BOT OF CAP

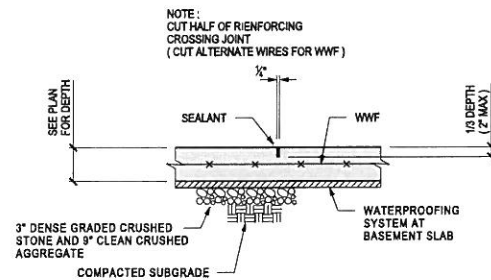
GRADE BEAM SCHEDULE							
MARK	SIZE		REINFORCING				REMARKS
	WIDTH	DEPTH	TOP	BOTTOM	MIDDLE	TIES	
GB-1	18"	18"	6 - #7	6 - #7		#3 CLOSED STIRRUPS - 1 @ 8" OC AT ENDS, REMAINDER AT 12" OC	CONT TOP AND BOT BARS; HK AT ENDS
GB-2	24"	24"	8 - #7	8 - #7		#4 CLOSED STIRRUPS - 1 @ 8" OC AT ENDS, REMAINDER AT 12" OC	CONT TOP AND BOT BARS; HK AT ENDS



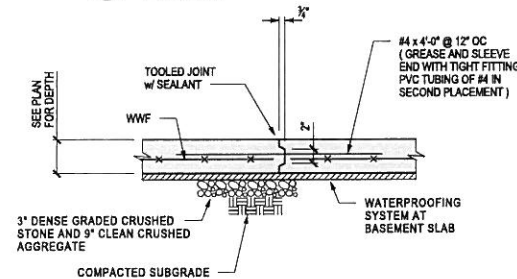
2 TYPICAL CAISSON DETAIL



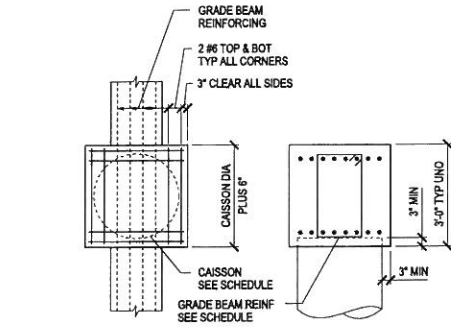
5 TYP ISOLATION JOINT AT INTERIOR CONC COLUMN



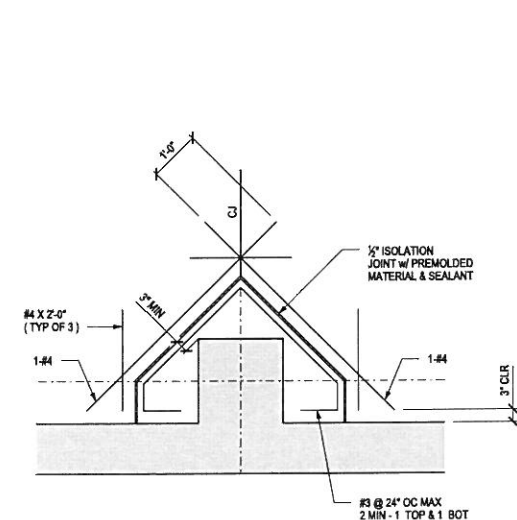
7 TYP CONTROL JOINT - SAW CUT (= CJ ON PLAN)



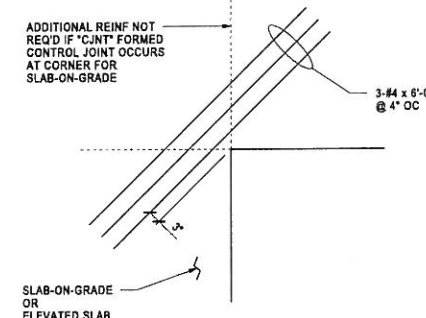
8 TYP CONTROL JOINT - FORMED (= CJ ON PLAN WHEN REQUIRED - OPTIONAL AT OTHER LOCATIONS)



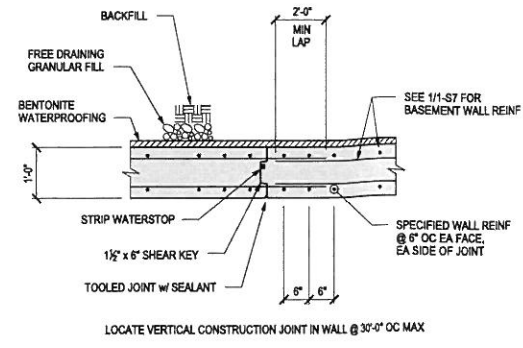
3 TYPICAL CAISSON CAP REINFORCING DETAIL



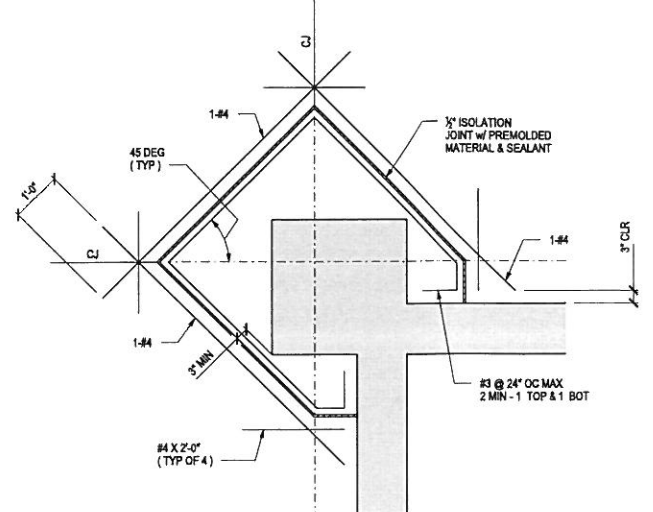
6 TYP ISOLATION JOINTS AT BASEMENT WALL PIERS



9 TYP ADDITIONAL SLAB REINF AT RE-ENTRANT CORNER



4 TYP BASEMENT WALL CONSTRUCTION JOINT



10 TYP PIER PLAN

Revisions	Date	Revisions	Date	Revisions	Date

VA FORM 08-6231, FEB. 1983

Heery International Inc.  
125 South Dubuque Street,  
Suite 500,  
Iowa City, IA 52240-4003  
319.354.4700

project number  
**11-25503**

Drawing Title  
**FOUNDATION DETAILS AND SCHEDULES**

CONSTRUCTION DOCUMENTS

Project Title  
**EXPAND BLDG. 1 FOR PACT AMBULATORY CARE, RADIOLOGY, EGRESS STAIRWELL**

Building No. **BLDG 1** Checked **JC** Drawn **NS**

Location  
**ICVA HEALTH CARE SYSTEM**

Date  
**11/08/2013**

Project No.  
**636-201**

DRAWING NO.  
**1-S7**

Department of Veterans Affairs