



Veterans  
Administration

# Barrier Free Design Handbook

A Supplement to  
Uniform Federal  
Accessibility Standards



December 1, 1986  
H-08-13

Office of Facilities

## FOREWORD

VA Construction Standard, CD-28, "Accommodations for the Physically Handicapped," requires compliance with this handbook to insure that VA construction projects incorporate these requirements for making VA facilities accessible to physically handicapped persons.

A checklist for barrier-free design is contained in this handbook to assist the VA construction staff and those responsible for the elimination of architectural barriers in both new and existing VA facilities.

This handbook is a supplement to the Uniform Federal Accessibility Standards (UFAS) (41 CFR Part 101-19). Where there is a difference in VA and UFAS scope and/or technical requirements, the more stringent requirement, offering the greater accessibility, takes precedence. All recommendations for changes or improvements should be sent to the Architectural Accessibility Compliance Office (088B1).



G.E. NEUMANN  
Director, Office of Facilities

Copies of the Uniform Federal Accessibility Standards may be obtained from:

Architectural and Transportation  
and Barriers Compliance Board  
330 C Street, S.W.  
Washington, DC 20202

DISTRIBUTION: RPC: 0833  
FD

## CONTENTS

1. PURPOSE .....	1
4. ACCESSIBLE SPACES AND ELEMENTS .....	2
4.1 Accessible Sites and Exterior Facilities: New Construction .....	2
4.2 Space Allowance and Reach Range .....	2
4.3 Accessible Route .....	5
4.5 Ground and Floor Surfaces .....	5
4.6 Parking and Passenger Loading Zones .....	5
4.8 Ramps .....	7
4.9 Stairs .....	7
4.10 Elevators .....	7
4.11 Platform Lifts .....	9
4.13 Doors .....	9
4.14 Entrances .....	12
4.16 Water Closets .....	12
4.17 Toilet Stalls .....	12
4.22 Toilet Rooms .....	14
4.26 Handrails, Grab Bars, and Tub and Shower Seats ....	14
4.27 Controls and Operating Mechanisms .....	14
4.28 Alarms .....	15
5. RESTAURANTS AND CAFETERIAS .....	15
6. HEALTH CARE .....	15
FIGURES	
Fig. 1 Dimension Data .....	3
Fig. 2 Reach Data .....	4
Fig. 3 Accessible Parking .....	6
Fig. 4 Stair Handrails and Extensions.....	8
Fig. 5 Manuevering Clearance for Doors.....	10
Fig. 6 Accessible Route Clearances.....	11
Fig. 7 Toilet Room and Toilet Stalls .....	13
CHECKLIST FOR BARRIER FREE DESIGN .....	16

**BARRIER FREE DESIGN HANDBOOK**  
**VA SUPPLEMENT TO**  
**UNIFORM FEDERAL ACCESSIBILITY STANDARDS**

**1. PURPOSE**

This handbook sets forth additional design requirements for the construction and renovation of buildings and facilities, owned, leased or funded by the Veterans Administration (VA), so that physically handicapped persons will have ready access to, and use of such buildings and facilities. Since the handbook incorporates VA's more stringent requirements, it is intended mainly for the use of the VA staff and contracted Architect/Engineer firms involved in developing criteria, designing, constructing and renovating VA buildings and facilities. The handbook is a supplement to the Uniform Federal Accessibility Standard (UFAS), which is the government wide standard for accessibility. Paragraph numbers correspond to UFAS paragraph numbers. Only those paragraphs that differ from UFAS are included. When there is a difference in VA and UFAS scope and/or technical requirements the more stringent VA requirement takes precedence.

The Architectural Barriers Act of 1968, Public Law 90-480, "insures that certain buildings financed with Federal funds are so designed and constructed as to be accessible to the physically handicapped." To comply with Public Law 90-480, the VA is required to meet the Uniform Federal Accessibility Standards (41 CFR Part 101-19) employed by the General Services Administration (GSA). This Federal Standard, as well as the Architectural and Transportation Barriers Compliance Board "Minimum Guidelines and Requirements for Accessible Design" and the American National Standard, ANSI A117.1-1980 "Specifications for Making Buildings and Facilities Accessible to and Usable by Physically Handicapped People" were consulted in the preparation of this handbook.

#### 4. ACCESSIBLE SPACES & ELEMENTS: SCOPE & TECHNICAL REQUIREMENTS

##### 4.1 ACCESSIBLE SITES AND EXTERIOR FACILITIES: NEW CONSTRUCTION

###### 4.1.1(5)(e)

- 4 Spinal Cord Injury (SCI) facilities: A dedicated lot of 1.5 parking spaces per SCI bed.
- 5 Where parking is provided, the following accessible spaces should be included for vans adapted for disabled drivers:
  - Regular areas -- 1% of total parking spaces
  - Outpatient facilities -- 3% of total spaces provided
- 6 The size of accessible parking spaces for vans shall be at least 16'-0" wide and 21'-0" long. (If access aisles are already in place, the width may be reduced to 11'-0".)
- 7 Identify accessible van parking space appropriately.

###### 4.1.4

###### Occupancy Classifications.

(9)(b) Institutional occupancies used for medical or other treatment or care of persons, some of whom are suffering from physical or mental illness, disease or infirmity including:

###### Long Term Care Facilities:

- Nursing Home Care Units
- Domiciliaries
- Intermediate Care Nursing Units

###### General Purpose Hospital

- Medical Nursing Units
- Surgical Nursing Units
- Mental Health and Behavioral Nursing Units

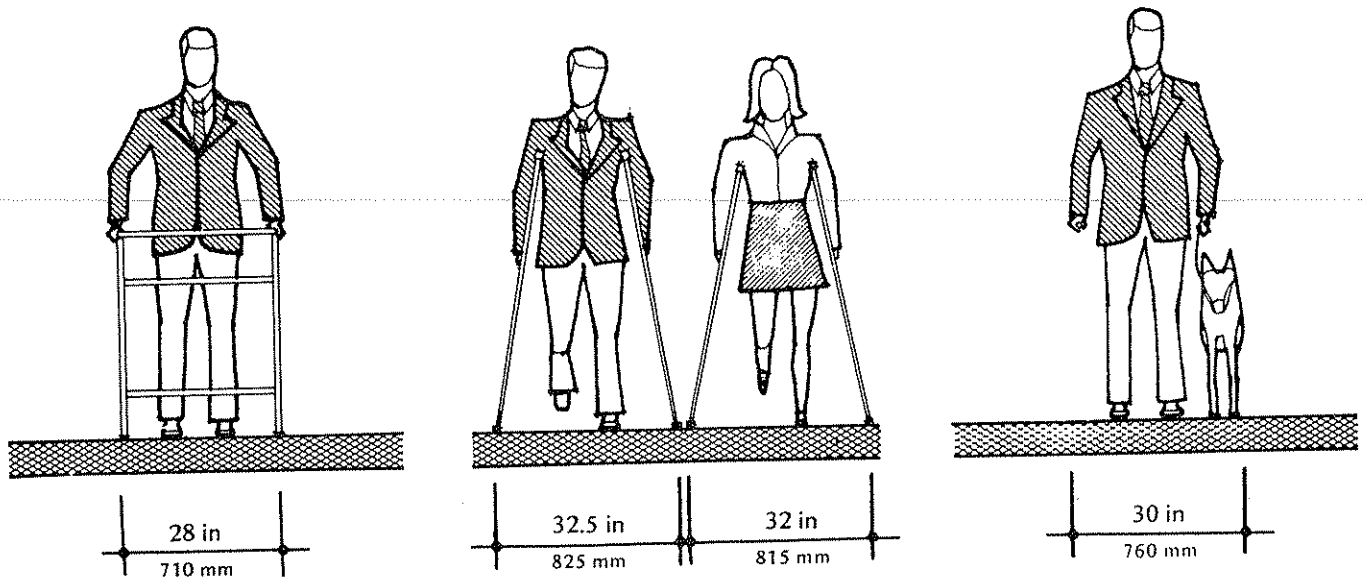
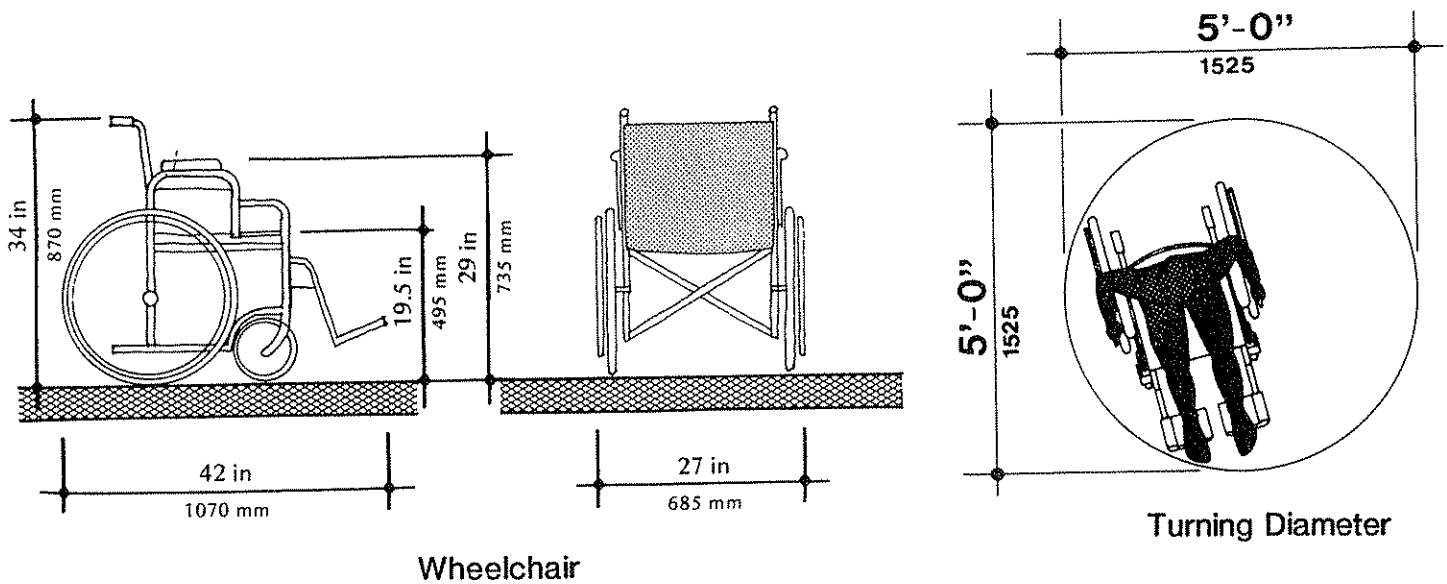
###### Special Purpose Hospital

- Neurological Nursing Units
- Orthopedic Nursing Units
- Rehabilitation Nursing Units
- Spinal Cord Injury Units

###### 4.2

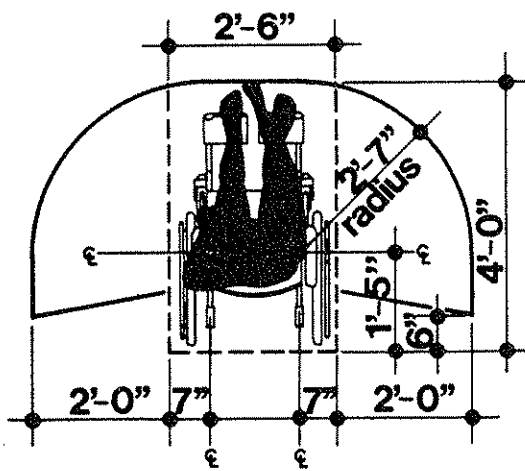
###### SPACE ALLOWANCE AND REACH RANGES

Figures 1 and 2 relate to anthropometrics and spatial, reach, sensory, and manipulative consideration affecting the physically impaired.



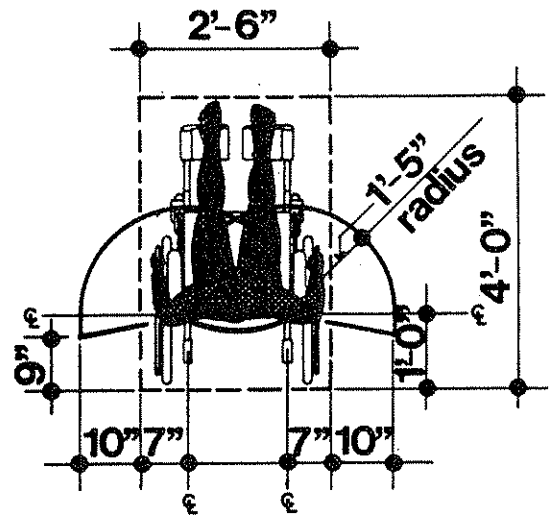
## Dimension Data

Figure 1



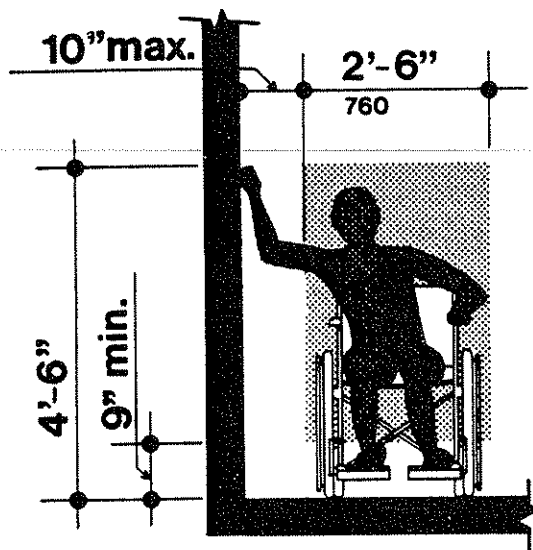
## reach range

objects 4'-0" high max.

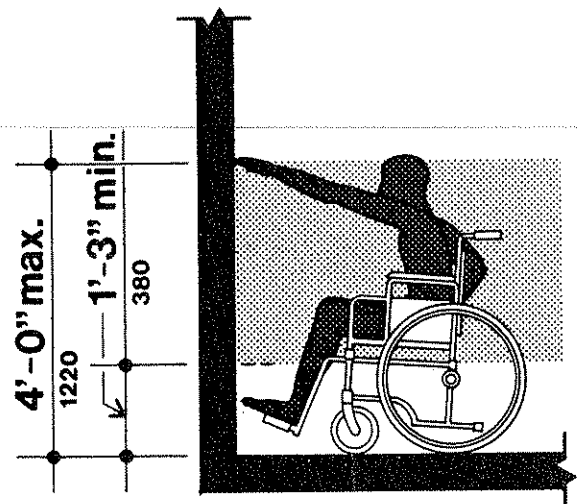


## reach range

objects 4'-6" high max.



## side reach



## forward reach

Reach Data

Figure 2



### **4.3 ACCESSIBLE ROUTE**

- 4.3.3 Accessible walks shall be free of steps and abrupt changes of level. The clear width shall be at least 5'-0".
- 4.3.7 The walk slope shall not exceed 1:33. A walk with a slope exceeding 1:33 shall be treated as a ramp, but walk width shall apply.
- 4.3.9 Where doors open onto an accessible route provide a clear and level platform, measuring a minimum of 6'-0" x 6'-0".
- 4.3.9.1 The exterior platform shall extend a minimum of 1'-6" beyond the latch side of single doors, and 6" beyond both sides of double-leaf doorways.
- 4.3.11 Provide level rest zones for accessible walks which have running slopes between 1:50 and 1:33. The rest zones shall be spaced at no more than 200 feet apart and measure a minimum of 5'-0" long by the full width of the walk.

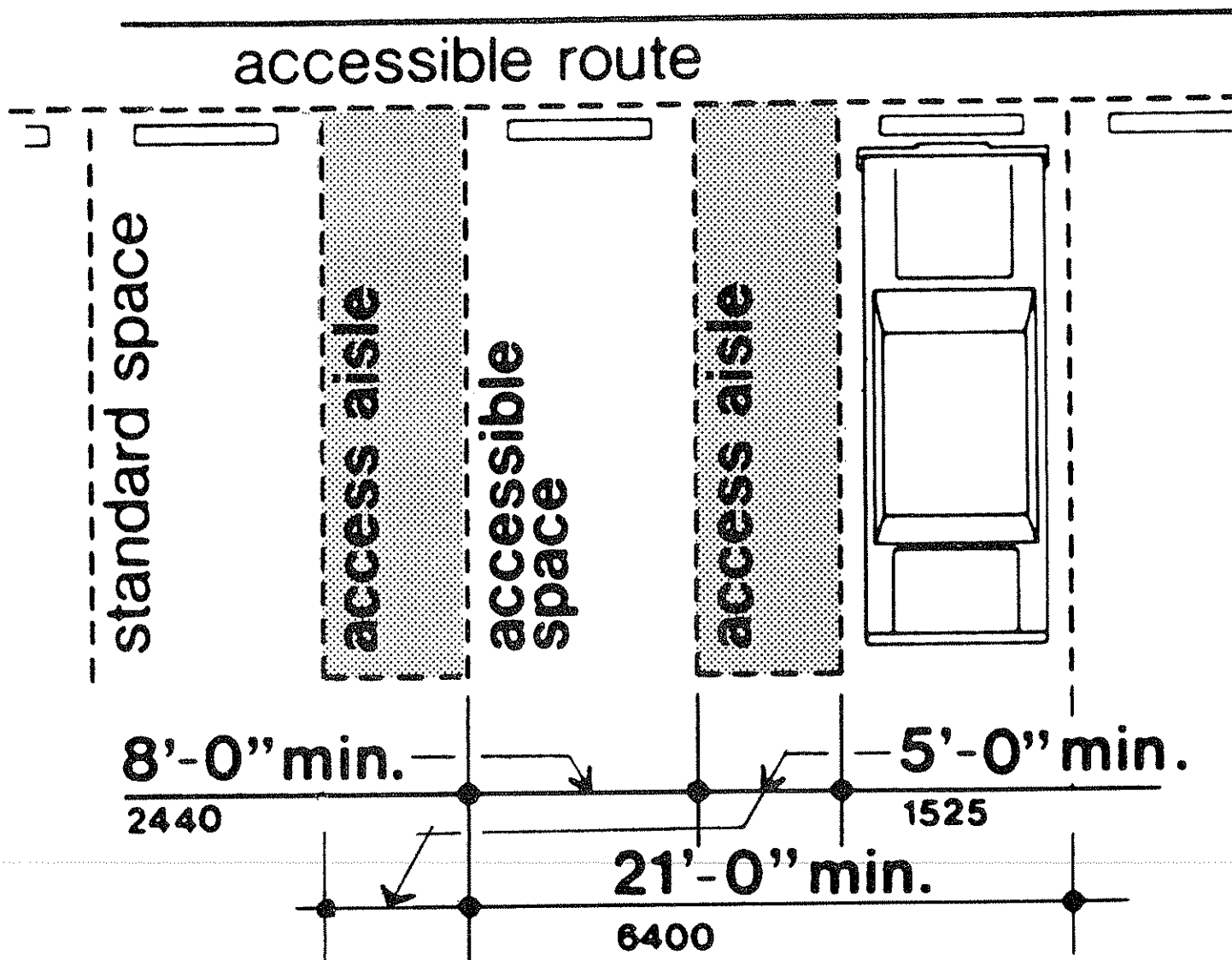
### **4.5 GROUND AND FLOOR SURFACES**

- 4.5.3 Carpets. Carpet or carpet tile used on an accessible ground or floor surface shall be securely attached with no cushion or pad. It shall have a level loop low profile or a level cut pile low profile. The maximum pile or combined pile and cushion thickness shall not exceed 1/4". Exposed edges of carpet shall be fastened to floor surfaces and have trim along the entire length of the exposed edge.

- 4.6 Parking And Passenger Loading Zones.** Locate passenger loading area as close as possible to an accessible entrance. Primary building entrances should have as much curb depressed as possible to allow multiple passenger loading zones for patient pick-up/drop-off.

- 4.6.3.1 Provide access aisles, measuring at least 5'-0" wide, on both sides of each parking space. Access aisles shall blend with the adjoining walk. (See Fig.3) Mark the access aisles to prevent vehicles parking within their limits.
- 4.6.3.2 Identify accessible parking spaces as reserved for the handicapped through the display of the "International Symbol of Accessibility." In large lots (more than 200 spaces), provide routing signage at the entrance to the lot and other locations to direct handicapped drivers to the accessible parking spaces. Install the signage according to the criteria in the VA manual, M-00-2, Signage System Standards Manual, as prescribed by VA Construction Standard 15-2.





NOTE: Accessible spaces for vans must be 11'-0" wide, have access aisles, and be designated for vans only.

Accessible Parking  
Figure 3

4.6.5 Locate passenger loading zone as close as possible to an accessible entrance.

#### **4.8 Ramps.**

4.8.2 Ramps shall have a maximum slope of 1:20. Ramps with slopes from 1:33 to 1:24 shall not exceed 40'-0" in length. Ramps with slopes from 1:25 to 1:20 shall not exceed 35'-0" in length. Ramps with a slope exceeding 1:20 or a rise exceeding 20" shall have a platform lift or elevator for vertical access.

4.8.3 The width of ramps shall not be less than 4'-0".

4.8.4 Provide level landings at the top, bottom and change of direction of each ramp run and at 35' or 40' intervals on straight run ramps depending on the slope.

4.8.4.1 Where doors open onto a ramp, provide a clear and level platform, measuring a minimum of 6'-0" x 6'-0". The exterior platform shall extend a minimum of 1'-6" beyond the latch side of single doors, and 6" beyond both sides of double-leaf doorways.

4.8.5 Install handrails at a height of 2'-9", measured from the ramp surface to the top of the handrail.

#### **4.9 Stairs.**

4.9.1 Stairs shall be at least 3'-8" wide.

4.9.2 The maximum height of risers shall be 7".

4.9.4.5 Stair handrails shall be mounted at a height of 2'-9", measured from the tread nosing to the top of the handrail. (See Fig. 4)

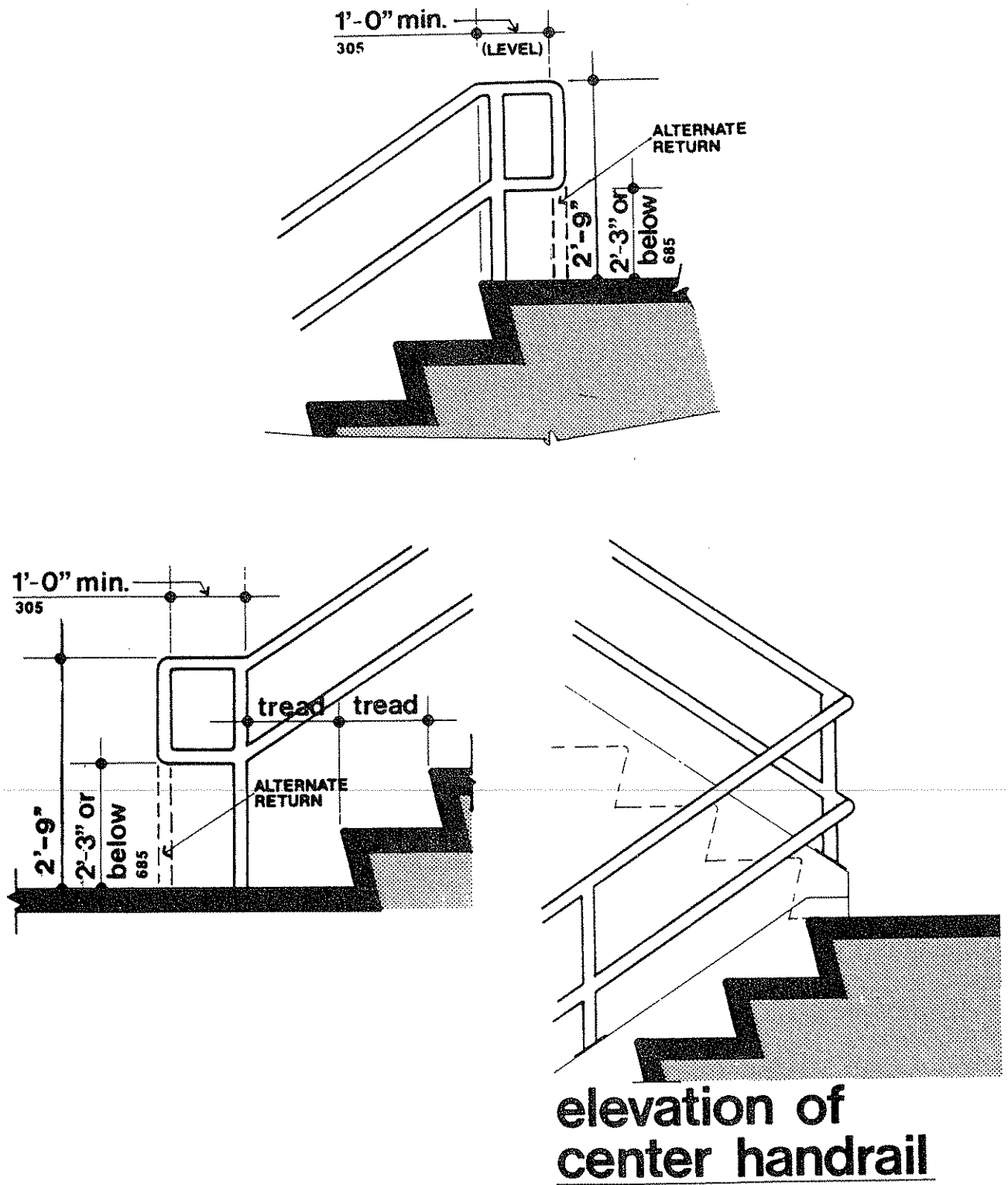
#### **4.10 Elevators.**

4.10.9 The minimum clear width for elevator doors shall be 4'-0".

4.10.10 Floor covering in the car shall have a nonslip, firm surface which permits easy movement of wheelchairs. Carpeting is not permitted.

4.10.11 The minimum illumination of car controls, platform, car threshold and landing sill shall be 20 foot candles.

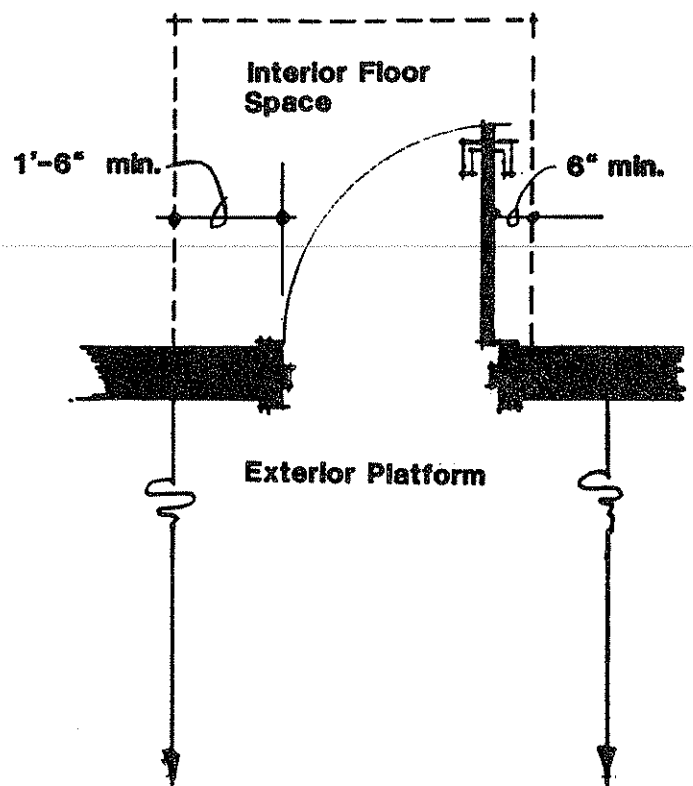
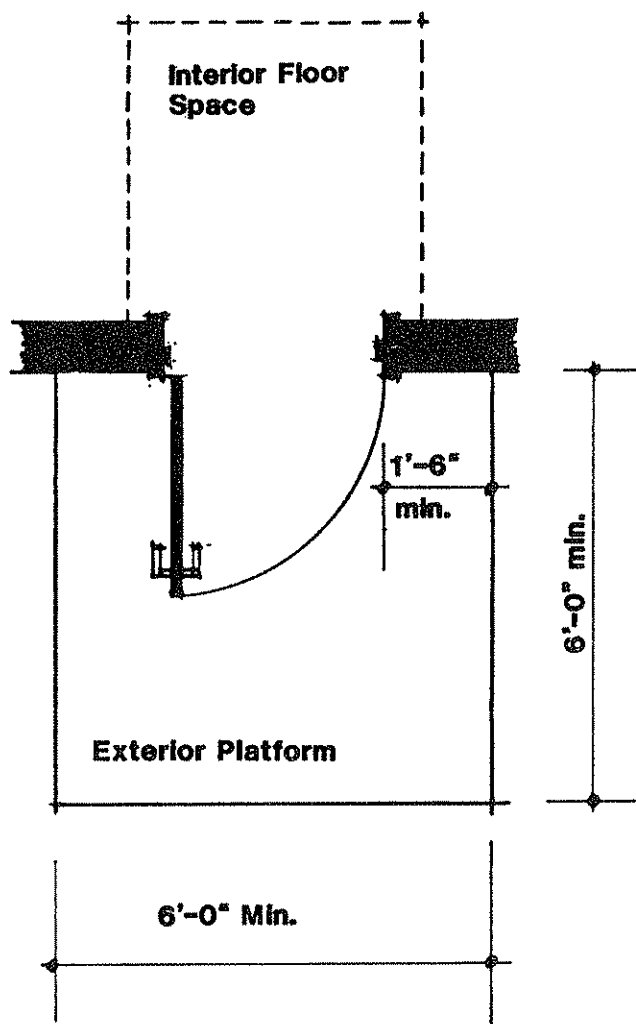
4.10.14 Provide a means of two-way communication between the elevator car and an area staffed 24 hours a day. This system shall consist of an emergency intercom station activated by the alarm button.



## Stair Handrails and Extensions

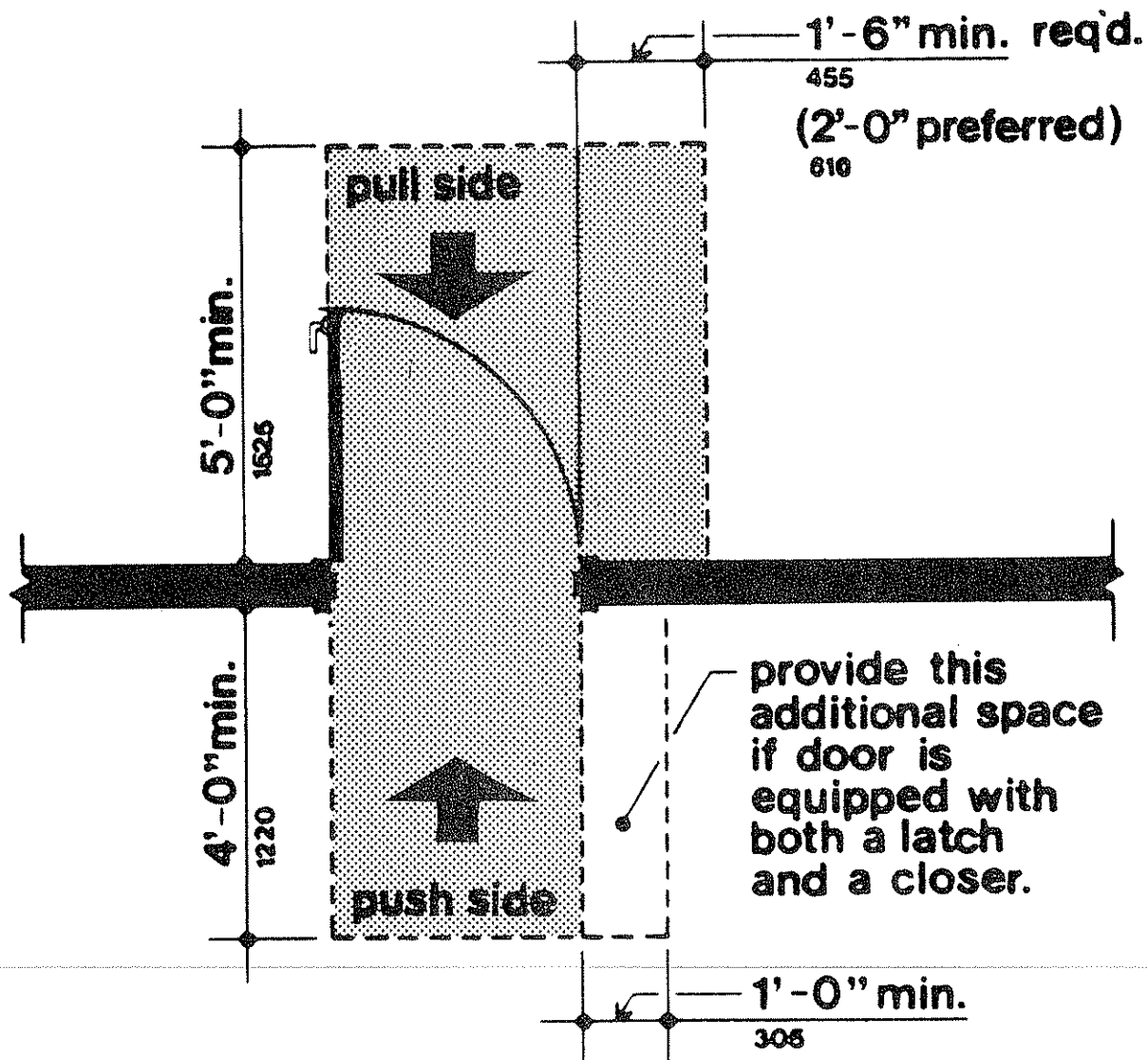
Figure 4

- 4.10.15 Install double handrails on the rear and two sidewalls of the car with the tops of the handrails measuring 2'-6" and 3'-6", respectively, above the finished floor of the car.
- 4.11 Platform Lifts.**
- 4.11.2 Platform lifts, erected to accommodate handicapped users, shall be capable of safely and comfortably transporting an occupied wheelchair, and shall be fully operable by the occupant or aide. All operating controls shall be mounted within easy reach and no higher than 3'-4". Platform minimum size is 12 square feet (3'-0" wide by 4'-0" deep). Maximum size is 18 square feet. Minimum capacity is 450 lbs. A clear floor space of 5'-0" x 5'-0" shall be provided at the point of entrance to and exit from the platform lift.
- 4.13 Doors.**
- 4.13.6 For doors that are not automatic and that open onto walkways and ramps provide exterior platforms and clear interior floor spaces which meet the requirements of this section.
- 4.13.6.1 The exterior platform shall be clear and level. It shall measure a minimum of 6'-0" x 6'-0". The platform shall extend a minimum of 1'-6" beyond the latch side of single doors, and 6" beyond both sides of double-leaf doorways. (See Fig. 5)
- 4.13.6.2 The clear interior floor space shall be level, have a depth of a minimum of 4'-0" and extend a minimum of 1'-6" beyond the latch side of the door. (See Fig. 5)
- 4.13.13 Where manual doors open onto corridors and other pedestrian paths of travel, the floor areas shall be clear and level. They shall extend at least 5'-0" from the pull side of the door and a minimum of 4'-0" from the push side of the door. The clear floor spaces shall extend a minimum of 1'-6" beyond the latch side of the door. (See Fig. 6)
- 4.13.14 In order to prevent the footrest on wheelchairs from catching on door stiles, the bottom surface of all doors, except automatic doors, shall be flush up to a minimum height of 1'-0", measured from the finished floor, or shall be equipped with a kickplate or bottom rail of the same dimension on the push side of the door.



## Maneuvering Clearance for Doors

Figure 5



## Accessible Route Clearances

Figure 6

#### **4.14 Entrances.**

- 4.14.3 All main, outpatient and other frequently used entrances shall be accessible. Identify accessible entrances through the display of the "International Symbol of Accessibility" and prominently placed routing signs.

#### **4.16 Water Closets.**

- 4.16.3 Accessible water closets shall be wall mounted at a height of 1'-4", measured from the finished floor to the top of the rim.

**Exception.** Water closets for SCI patients shall be mounted at a height of 1'-3", measured from the finished floor to the top of the rim.

- 4.16.4 Position grab bars as shown in Fig. 7. Grab bars shall be mounted at a height of 2'-9", measured from the finished floor to the center line of the grab bar.

**Exception.** Where water closets are equipped with bedpan washers, split handrails may be used on the rear wall.

#### **4.17 Toilet Stalls.**

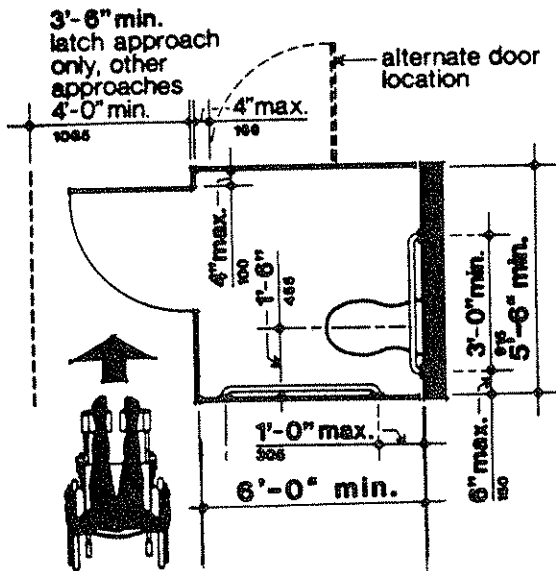
- 4.17.3 All accessible toilet rooms with stalls shall have a minimum of one Type "A" stall (side-transfer stall). A Type "A" stall shall measure a minimum of 5'-6" wide by 6'-0" deep, clear internal dimensions. Refer to Fig. 16 and VA Architectural Standard Detail No. 12 for dimensions and arrangements of elements within a Type "A" stall.

**Exception.** In instances of alteration work, in areas other than SCI areas, where provision of a standard stall (Fig. 7, A) is structurally impracticable or where plumbing code requirements prevent combining existing stalls to provide space, an alternate stall (Fig. 7, B) may be provided in lieu of the standard stall.

A Type "B" stall shall measure a minimum of 3'-6" by 6'-6" deep, clear dimensions. Refer to Fig. 7 for dimensions and arrangement of elements within a Type "B" toilet stall.

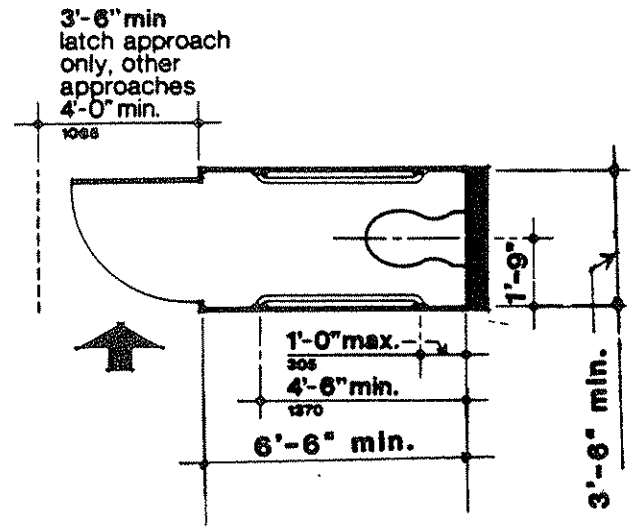
- 4.17.5 Doors to accessible toilet stalls shall swing out. Door should have handle on both sides and a latch inside that requires no tight grasping, pinching, or twisting of the wrist and operable with one hand.





standard stall

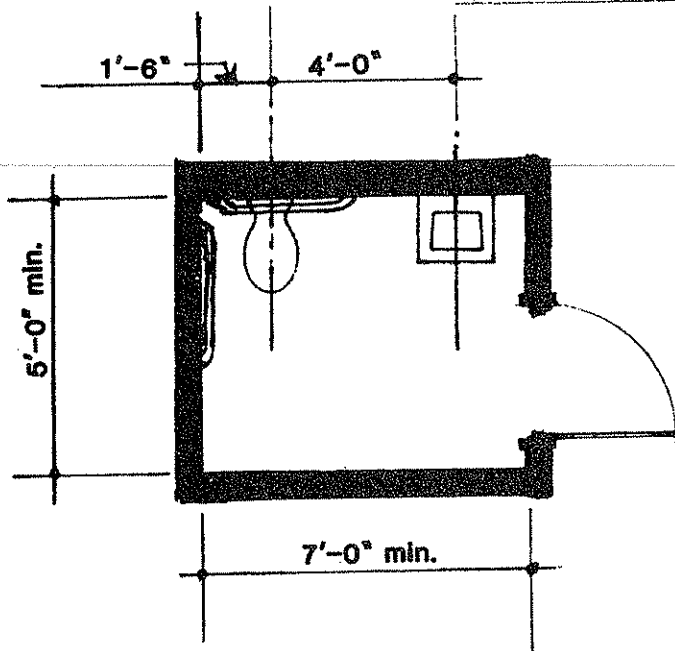
A



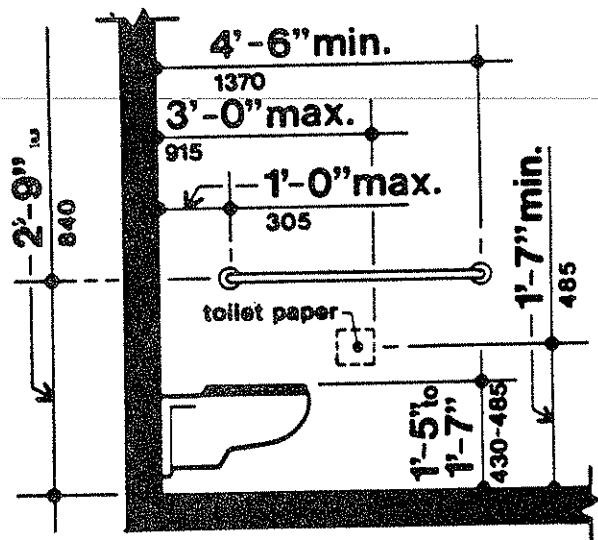
alternate stall

B

## Toilet stalls



toilet room



## Toilet Room and Toilet Stalls

Figure 7

#### **4.22 Toilet Rooms.**

- 4.22.1 All public and common use toilet rooms shall be accessible. Number and location of accessible patient and staff toilet rooms shall comply with VA Handbook H-08-9, "Planning Criteria for VA Facilities."
- 4.22.2 Entrance doorways to toilet rooms shall have a minimum clear width of 3'-0".
- 4.22.3 The toilet room shall have a minimum unobstructed floor space of 5'-0" in diameter, measured 1'-0" above the floor, for turning a wheelchair without conflict with overhanging fixtures or plumbing.
- 4.22.7.1 Where towel racks, disposal units, dispensers, vending machines, and appliances are provided, at least one of each type shall be mounted with operating mechanisms or controls located no higher than 3'-4" above the finished floor. Controls shall comply with the requirements in section 4.27, "Controls."
- 4.22.7.2 Where shelves are provided, at least one shall be mounted no higher than 3'-4" above the finished floor.
- 4.22.8 Public and staff accessible toilet rooms shall be identified by posting the "International Symbol of Accessibility" on or adjacent to the entry door. (Refer to the VA manual M-00-2, "Signage System Standards Manual," as prescribed by VA Construction Standard 15-2.)

#### **4.26 Handrails, Grab Bars, and Tub and Shower Seats.**

- 4.26.1 Corridor Handrails. Where corridor handrails are required, they shall be mounted at a height of 2'-9", measured from the finished floor to the top of the handrail.

#### **4.27 Controls and Operating Mechanisms.**

- 4.27.1 All controls intended for public or occupant use, for example, light switches, dispenser controls, etc., shall be placed along accessible paths of travel and in unobstructed locations accessible to handicapped individuals.
- 4.27.3 Mount controls no higher than 3'-4" above the finished floor unless specified in this handbook.

**4.28 Alarms.**

- 4.28.1 In facilities where alarm systems are required, provide both an audible and a visual signal.
- 4.28.3 A visual alarm device shall be provided adjacent to each exit door and near each audible alarm and shall flash in conjunction with the audible alarm. The frequency of visual alarms shall be less than 5 Hz. Both alarm signals shall operate from the same power source.
- 4.28.5 Install pull stations no higher than 4'-0", measured from the finished floor to the centerline of the device.

**5. RESTAURANTS AND CAFETERIAS.**

- 5.1 At least 5% of the tables shall have knee clearance of 2'-5" above the finished floor. The clearance shall not be obstructed by bracing, skirts, fascias, or table bases.
- 5.5 Tray lines shall be continuous through serving and dispensing areas to cashier stations as shown on VA "List of Dietetic Equipment Symbols," Detail 502/7.

**6. HEALTH CARE.**

- 6.5 Nurses Station & Reception Areas. Each nurses' station, and reception area shall have a work surface that is accessible in accordance with 4.32. If a privacy screen, or dwarf partition, is placed around the work surface, the screen, or partition, must have a 3'-0" opening to provide access to the counter, or work surface, from both sides.

**CHECKLIST  
FOR  
BARRIER FREE DESIGN**

**VA FACILITY/PROJECT** \_\_\_\_\_

**LOCATION** \_\_\_\_\_

This checklist is intended for in-house use for, but not limited to, the following purposes:

- (1) By A/E's, VA project leaders and Construction personnel in the preparation and/or review of project layouts, plans, specifications, architectural details and construction to insure the incorporation of minimum accessibility requirements.
- (2) In reviews of all VA new construction, addition and renovation projects for accessibility compliance.
- (3) In surveys of existing VA facilities for barrier free deficiencies.

The initial headings and numbering sequence of the checklist sections conform to the format employed in the Uniform Federal Accessibility Standard to allow for convenient cross referencing.

	YES	NO
<b>4.3 Walks</b>		
a. Free of steps or abrupt changes of level.	_____	_____
b. Minimum width of 5'-0".	_____	_____
c. Maximum gradient of 1:33 (otherwise considered a ramp complying with Section 4.5, "Ramps").		
d. Cross slopes no greater than 1:50.	_____	_____
e. Walks with gradients from 1:50 to 1:33 have rest areas every 200'.	_____	_____
f. Changes in level are blended to common level by grading, curb cuts or ramps.	_____	_____

	YES	NO
g. Firm, nonslip surface.	_____	_____
h. Free of gratings, manholes, etc.	_____	_____
i. Level platforms (minimum of 6'-0" x 6'-0") at doors.	_____	_____
<b>4.4 Hazards</b>		
Accessible paths of travel are free of hazardous side protrusions.	_____	_____
<b>4.5 Carpet</b>		
Carpet is securely attached and has a low-cut pile and tight weave.	_____	_____
<b>4.5 Floors</b>		
a. Firm and slip-resistant surface.	_____	_____
b. Changes in level between 1/4" and 1/2" are beveled with a slope no greater than 1:2. (Changes in level up to 1/4" require no edge treatment.)	_____	_____
c. Changes in level greater than 1/2" comply with Section 4.8, "Ramps."	_____	_____
d. All floors on which SCI services are provided are free from changes of level.	_____	_____
<b>4.6 Parking</b>		
a. Number of accessible parking spaces are provided as follows:		
Approximately 3% of employee and visitor spaces.	_____	_____
At outpatient facilities, 10% of total number of parking spaces.	_____	_____
At SCI facilities, a dedicated lot with 1.5 spaces for each SCI bed.	_____	_____

	YES	NO
b. Located conveniently to accessible entrances.	_____	_____
c. Identified by accessibility symbols and routing signage where necessary.	_____	_____
d. Spaces are at least 8'-0" wide with access aisles on each side.	_____	_____
e. Spaces 11'-0" wide with access aisles for specially adapted vans.	_____	_____
f. Access aisles are at least 5'-0" wide with surface slope not exceeding 1:50.	_____	_____
g. Smooth transition from access aisle to adjacent walkway.	_____	_____
h. Minimum clear width of adjacent walkways not reduced by vehicle overhang.	_____	_____

#### 4.6 Passenger Loading Area

a. In a safe area and clearly designated for passenger arrival and departure.	_____	_____
b. Close as possible to accessible entrance.	_____	_____
c. Zoned to prohibit parking.	_____	_____
d. Ramped to sidewalk level.	_____	_____
e. Access aisles, measuring at least 5'-0" wide by 20'-0" long and parallel and level with the vehicle pull-up space.	_____	_____
f. Passenger loading areas at health care facilities are protected by canopy or roof overhang.	_____	_____
g. Communication system for assistance provided at Spinal Cord Injury (SCI) units.	_____	_____

	YES	NO
<b>4.7 Curb Ramps</b>		
a. Provided wherever a walk crosses a curb.	_____	_____
b. Located or protected to prevent obstruction by parked vehicles or street furnishings.	_____	_____
c. Maximum slope, 1:12.	_____	_____
d. Minimum width, 3'-0".	_____	_____
e. Smooth transition from curb ramp to street or grade level.	_____	_____
f. Firm, slip-resistant surface.	_____	_____
<b>4.8 Ramps</b>		
a. Maximum slope, 1:20.	_____	_____
b. Slope of 1:33 to 1:24: ramp no greater than 40' in length.	_____	_____
c. Slope of 1:25 to 1:20: ramp no greater than 35' in length.	_____	_____
d. Cross slope no greater than 1:50.	_____	_____
e. Minimum clear width, 4'-0".	_____	_____
f. Top and bottom landings are at least 5'-0" long.	_____	_____
g. Intermediate landings at 35' or 40' intervals are at least 5'-0" long.	_____	_____
h. Where doors swing onto a ramp landing, the landing is level and at least 6'-0" x 6'-0".	_____	_____
i. Where required, handrails are installed on both sides.	_____	_____
Handrails are mounted at a height of 2'-9" and extend 1'-0" beyond beginning and end of ramp.	_____	_____



	YES	NO
j. Firm, slip-resistant surface.	_____	_____
k. Ramp curbs are at least 4" high by 4" wide.	_____	_____

#### 4.9 Stairs

a. Minimum width of stairs, 3'-8".	_____	_____
b. Treads and risers are of uniform size on a single flight of stairs.	_____	_____
c. Maximum riser height, 7".	_____	_____
d. Closed risers.	_____	_____
e. Minimum tread width, 11".	_____	_____
f. Slip-resistant tread surface.	_____	_____
g. Nosings neither abrupt nor square.	_____	_____
h. Handrails on both sides of stair.	_____	_____
1-1/2" diameter.	_____	_____
1-1/2" space between handrail and mounting surface.	_____	_____
Height of handrails, 2'-9".	_____	_____
Handrails are free of sharp edges.	_____	_____
Wall surfaces behind handrails are smooth.	_____	_____
Ends of handrails are smooth.	_____	_____
Handrails extend 1'-0" on one side beyond the top riser and 1'-11" on one side beyond the bottom riser.	_____	_____
i. Stairways are well illuminated.	_____	_____

#### 4.10 Elevators

- |   |       |       |
|---|-------|-------|
| a. In multi-story facilities each level is served by an elevator, interior ramp or platform lift. | _____ | _____ |
| b. Automatic operation.   | _____ | _____ |
| c. Self-leveling plus/minus 1/2".   | _____ | _____ |
| d. Minimum clear width of elevator doors, 4'-0".  | _____ | _____ |
| e. Doors are equipped with safety reopening device.   | _____ | _____ |
| f. Minimum car size, 6'-8" x 4'-6".   | _____ | _____ |
| g. Auxiliary control panel, centered at 3'-0" above car floor.                                    | _____ | _____ |
| h. Hall call buttons, centered at 3'-4" above the finished floor.                                 | _____ | _____ |
| i. Call and operating buttons, raised and illuminated.  | _____ | _____ |
| j. Audible and visual signals operate when the car is passing through the floors it serves.       | _____ | _____ |
| k. Emergency alarm system.  | _____ | _____ |
| l. Intercom system.   | _____ | _____ |
| m. Double set of handrails, 2'-6" and 3'-6".  | _____ | _____ |
| n. Floor surface of car is firm and slip resistant.   | _____ | _____ |

#### 4.11 Platform Lifts

- |   |       |       |
|---|-------|-------|
| a. Capable of safely and comfortably transporting an occupied wheelchair. | _____ | _____ |
|---|-------|-------|

	YES	NO
b. Fully operable by wheelchair occupant or aide.	_____	_____
c. Controls mounted within easy reach and no higher than 3'-4".	_____	_____
d. Clear floor space of 5'-0" x 5'-0" at the point of entrance to and exit from the lift.	_____	_____

#### 4.13 Doors and Doorways

a. Minimum 3'-8" door to all patient bedrooms.	_____	_____
Minimum 3'-10" door to all patient bedrooms in SCI units.	_____	_____
b. Minimum 2'-10" clear opening to all other rooms.	_____	_____
c. Level approaches to doors.	_____	_____
d. 1'-6" clearance at latch side of all doors, except acute care patient bedroom doors.	_____	_____
e. Minimum clearance between manual doors in series, 4'-0" plus the width of the door.	_____	_____

#### 4.14 Entrances

a. All main, outpatient, and other highly used entrances are accessible.	_____	_____
b. They are connected by an accessible walk to accessible parking and public streets.	_____	_____
c. They are connected to all accessible elements (e.g. elevators and ramps) and spaces throughout a building by paths of travel at least 3'-0".	_____	_____
d. Signage at accessible entrances.	_____	_____
f. Maximum opening force for interior hinged doors is 5 lbf.	_____	_____

- g. Thresholds are flush with finished floor or beveled with a slope no greater than 1:2.
- h. Operating devices on doors are easy to operate with one hand.
- i. Knurled surface on operating hardware of doors leading to hazardous areas.
- j. Bottom rail (kickplate) is at least 1'-0" high.
- k. Automatic doors are used in high-use areas.

_____	_____
_____	_____
_____	_____
_____	_____
_____	_____

#### 4.15 Water Fountains

- a. Installed as shown on VA Architectural Standard Detail No. 4C.
- b. Spout height no higher than 3'-0".

_____	_____
_____	_____

#### 4.22 Toilet Rooms

- a. Public and common use toilet rooms are usable by the physically handicapped.
- b. Signage for accessible toilet rooms.
- c. Minimum width of entrance doors to toilet rooms, 3'-0".
- d. Minimum space between vestibule doors, 4'-0" plus the width of the door swinging into the space.
- e. Clear turning space of 5'-0".
- f. Minimum clear width of doorways to toilet stalls, 2'-8".
- g. Wheelchair "side-transfer stall", minimum 5'-6" wide x 6'-0" deep.
- h. Wheelchair "front-transfer stall", minimum 3'-6" wide by 6'-6" deep.

_____	_____
_____	_____
_____	_____
_____	_____
_____	_____
_____	_____
_____	_____
_____	_____

	YES	NO
i. Water closet, top of rim 1'-4" above finished floor (1'-3" in SCI units).	_____	_____
j. Grab bars, 2'-9" above finished floor. 1-1/2" in diameter.	_____	_____
1-1/2" space between grab and mounting surface.	_____	_____
Handrails are free of sharp edges.	_____	_____
Wall surfaces behind grab bars are smooth.	_____	_____
k. Urinal basin lip, 1'-3" above finished floor.	_____	_____
l. Lavatory, minimum underneath clearance of 2'-5".	_____	_____
m. Faucets easily operated (preferably lever type).	_____	_____
n. Mirrors, shelves and dispensers, a maximum height of 3'-4" above finished floor.	_____	_____

#### 4.26 Corridor Handrails

a. 1-1/2" diameter.	_____	_____
b. 1-1/2" space between handrail and mounting surface.	_____	_____
c. Height of handrails, 2'-9".	_____	_____
d. Handrail sections are free of sharp edges.	_____	_____
e. Wall surfaces behind handrails are smooth.	_____	_____
f. Ends of handrails are rounded.	_____	_____

