

9



Department  
Mathematics

A

B

C

D

E

F

A

B

C

D

E

F

three inches = one foot

one and one half inches = one foot

one inch = one foot

three quarters inch = one foot

one half inch = one foot

one quarter inch = one foot

one eighth inch = one foot

one quarter inch = one foot

one eighth inch = one foot

one quarter inch = one foot

one eighth inch = one foot

one eighth inch = one foot

Project: 14000141005 USCP/ONE Plumb Working Sheets: 14105-P-101.dwg 7-10-14 04:47:21 PM csp/maza



1

1/4" = 1'-0"

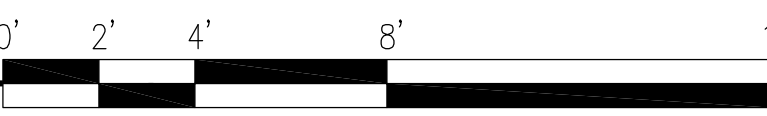
PLUMBING PLAN - DEMO



2

1/4" = 1'-0"

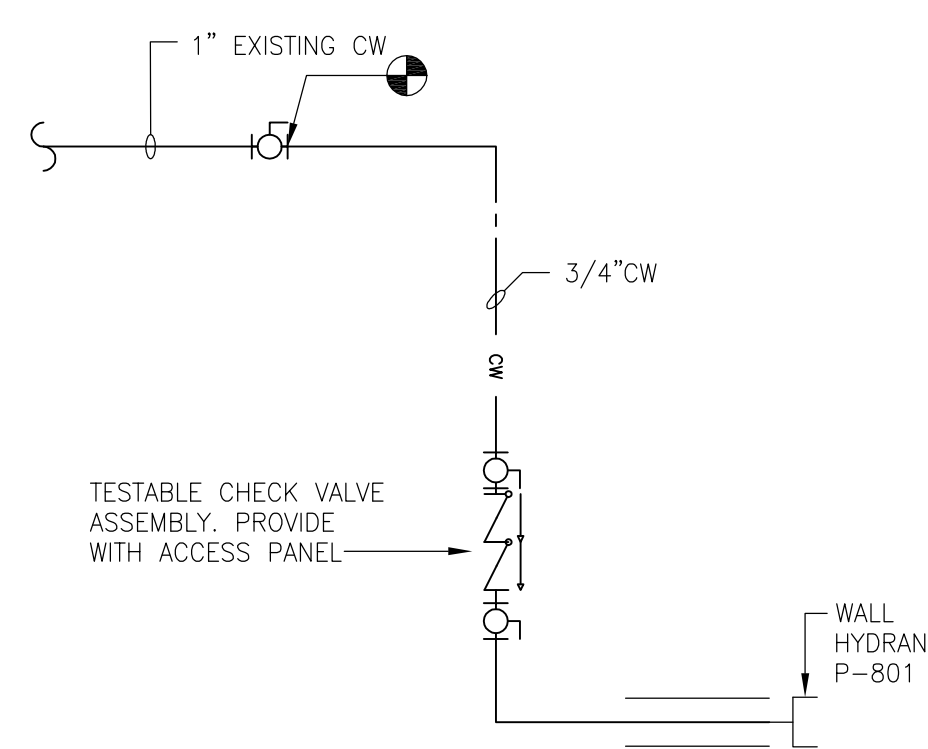
PLUMBING PLAN - NEW



3

NTS

WALL HYDRANT RISER DIAGRAM



### GENERAL NOTES

1. ALL WORK SHALL BE COORDINATED WITH BUILDING OPERATIONS AND OTHER TRADES.
2. IT IS THE RESPONSIBILITY OF THE CONTRACTOR TO REMOVE FROM SITE AND PROPERLY DISPOSE OF ALL MATERIALS AND DEBRIS GENERATED BY THE PLUMBING DEMOLITION.
3. EXISTING COLD WATER PIPING AND STORM PIPING SHALL BE PROTECTED FROM DAMAGE, DUST AND DEBRIS DURING CONSTRUCTION.

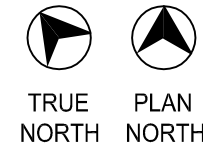
### DEMOLITION KEY NOTES

- 1 REMOVE 4" STORM DRAIN LINE DOWN ALONG WALL. REMOVE CLEANOUT AND FITTING TO UNDERGROUND STORM LINE. CUT SLAB AS REQUIRED. CLEAN/PREPARE PIPING FOR NEW WORK.
- 2 REMOVE 4" STORM DRAIN LINE ABOVE CEILING. PIPING SHALL BE CUT BELOW UNDERSIDE OF ROOF AS REQUIRED TO ACCOMMODATE NEW WORK. CLEAN/PREPARE PIPING FOR NEW WORK.
- 3 REMOVE COLD WATER PIPING INSIDE WALL. REMOVE FROM CONNECTION TO BALL VALVE. CLEAN/PREPARE PIPING FOR NEW WORK.
- 4 REMOVE HOSE BIBB IN THIS LOCATION AND ASSOCIATED PIPING. PATCH WALL AS REQUIRED TO MATCH EXISTING.
- 5 ROOF DRAIN IN THIS LOCATION TO REMAIN. DEMOLITION WORK SHALL NOT COMPROMISE INTEGRITY OF ROOF OR WEATHER PROOFING.

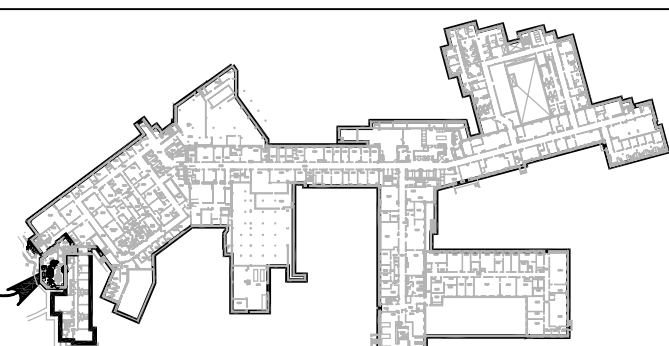
### NEW WORK KEY NOTES

- 1 EXTEND EXISTING 4" UNDERGROUND STORM LINE TO ACCOMMODATE NEW STORM LEADER LOCATION. CUT SLAB AS REQUIRED FOR INSTALLATION OF NEW PIPING. PROVIDE APPROPRIATE BEDDING AND FILL FREE OF ROCKS OR DEMOLITION DEBRIS. REFER TO PROJECT MANUAL FOR ACCEPTABLE MATERIALS. PATCH SLAB TO MATCH EXISTING.
- 2 NEW 4" STORM LINE UP ALONG WALL.
- 3 CONNECT NEW 4" STORM LINE TO EXISTING ROOF DRAIN.
- 4 CONNECT NEW 3/4" COLD WATER LINE DOWNSTREAM FROM BALL VALVE. ROUTE COLD WATER PIPING ABOVE CEILING.
- 5 NEW NON-FREEZE WALL HYDRANT P-801. BRASS OPERATING ROD WITH CASING OF BRONZE PIPE OF SUFFICIENT LENGTH TO EXTEND THROUGH WALL AND PLACE VALVE INSIDE BUILDING. PROVIDE WITH TESTABLE CHECK VALVE ON RISER. PROVIDE WALL PANEL FOR ACCESSIBILITY.
- 6 3/4" COLD WATER LINE DOWN ALONG WALL.

#### KEY PLAN:



AREA OF WORK



#### ENGINEERS + CONSULTANTS:

**SEPSTEIN**

Architecture  
Interiors  
Engineering  
Construction  
600 W. Fulton Street  
Chicago, IL 60661-1259  
T: 312.454.9100  
www.epsteinglobal.com

#### ARCHITECT + ENGINEERS:

**Bancroft**  
BANCROFT ARCHITECTS + ENGINEERS

700 Nicholas Blvd., Suite 403  
Elk Grove Village, IL 60007  
T: 847.952.9362 F: 847.952.9403

#### Drawing Title

DEMOLITION AND NEW WORK PLUMBING  
FLOOR PLANS

#### Approved Project Director

#### Project Title

William S. Middleton  
VA Hospital  
SITE PREP FOR 3T MRI

#### Location

MADISON, WISCONSIN

#### Date

7/14/2014

#### Checked

PV

#### Drawn

CE

#### Project Number

607-14-110

#### Building Number

1

#### Drawing Number

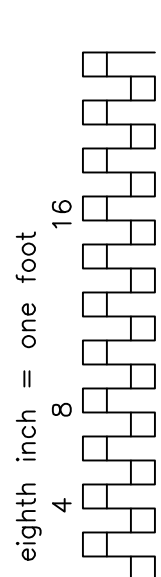
P-101



Office of  
Construction  
and Facilities  
Management



9

 Department of  
Veterans Affairs

10. IN EVENT OF CONFLU AMBIGUITY OR INCONSISTENCY IN OR BETWEEN THE ELEMENTS COMPRISING THE CONTRACT DOCUMENTS, NOT CLARIFIED BY A MODIFICATION, THE CONTRACTOR SHALL BE RESPONSIBLE FOR THE INTERPRETATION OF THE CONTRACT DOCUMENTS AND THE QUALITY OR BETTER QUALITY OF PRODUCTS AND THE WORK IN ACCORDANCE WITH THE INTERPRETATION BY ARCHITECT OF WHICH CONFLICTING REQUIREMENT GOVERNS, UNLESS HE SHALL HAVE, BEFORE SUBMISSION OF HIS BID, ASKED FOR AND OBTAINED WRITTEN DECISION OF THE ARCHITECT AS TO WHICH REQUIREMENT SHALL GOVERN. IF THE ARCHITECT'S DECISION IS IN FAVOR OF THE ARCHITECT DECIDES TO ACCEPT A LESSER QUANTITY OR LOWER QUALITY OF PRODUCTS AND WORK, THE CONTRACTOR SHALL REMIT TO THE OWNER THE DIFFERENCE BETWEEN THE COST OF THE GREATER QUANTITY AND THE COST OF THE GREATER QUANTITY OR BETTER QUALITY OF PRODUCTS AND WORK.

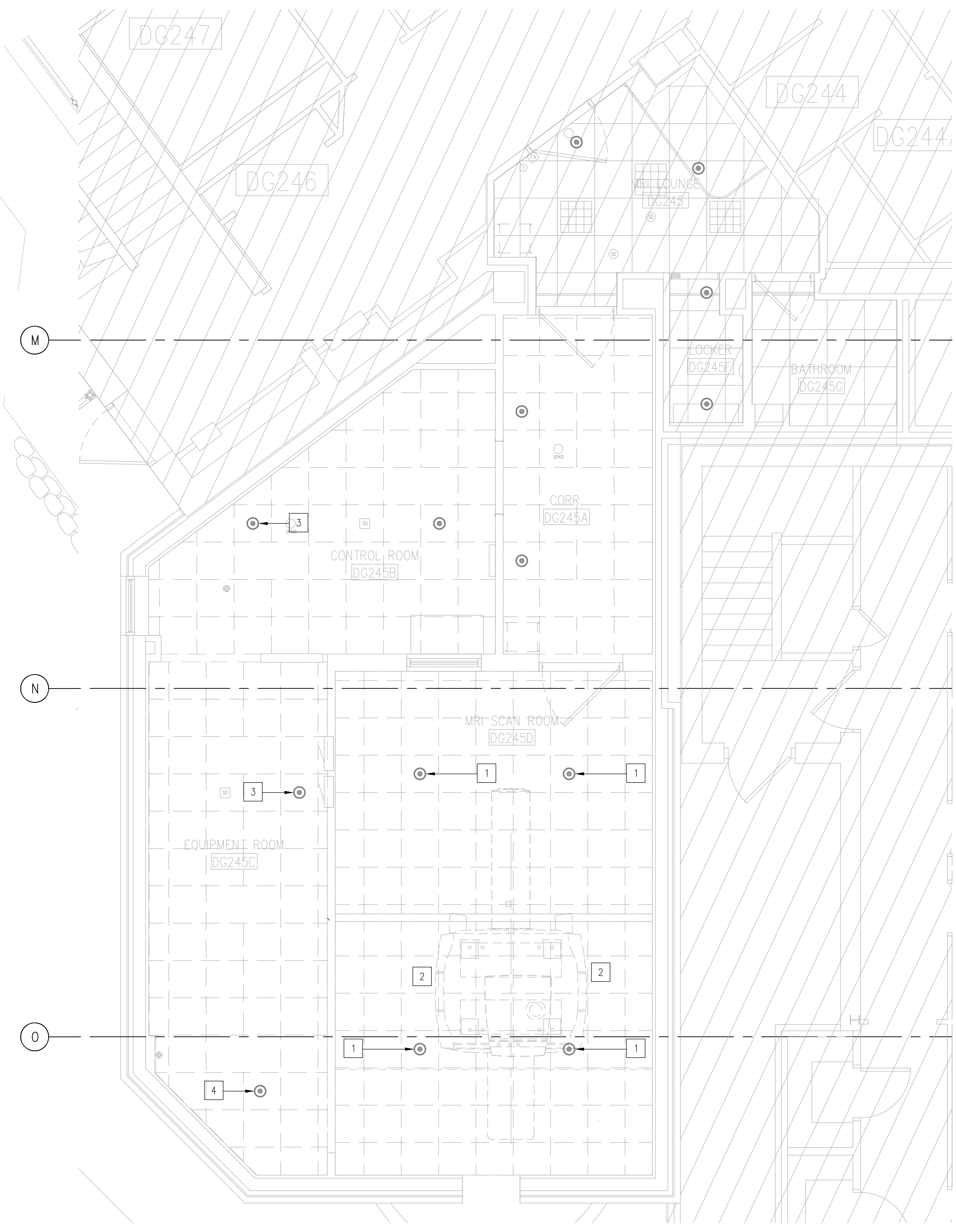
| SYMBOL | DESCRIPTION                 | SYMBOL | DESCRIPTION                           |
|--------|-----------------------------|--------|---------------------------------------|
|        | COLD WATER                  | AP     | ACCESS PANEL                          |
|        | SPRINKLER PIPE              | AFF    | ABOVE FINISHED FLOOR                  |
|        |                             | BFF    | BELOW FINISHED FLOOR                  |
|        | FLUSH MOUNTED HEAD          | BFP    | BACKFLOW PREVENTER                    |
|        | SEMI-RECESSED HEAD          | BLDG   | BUILDING                              |
|        | PENDENT HEAD                | CONTR. | CONTRACTOR                            |
|        | UPRIGHT HEAD                | DN     | DOWN                                  |
|        | SIDEWALL SPRINKLER HEAD     | EXIST  | EXISTING                              |
|        |                             | FBO    | FURNISHED BY OTHERS                   |
|        | FIRE EXTINGUISHER           | FDC    | FIRE DEPARTMENT CONNECTION            |
|        | FIRE PUMP                   | FHC    | FIRE HOSE CABINET                     |
|        | FIRE HYDRANT                | FP     | FIRE PUMP                             |
|        | DRY PIPE VALVE              | GAL    | GALLON                                |
|        | PRE-ACTION VALVE            | GEN.   | GENERAL                               |
|        |                             | GPM    | GALLON PER MINUTE                     |
|        |                             | HP     | HORSE POWER                           |
|        | BACKFLOW PREVENTER ASSEMBLY | JP     | JOCKEY PUMP                           |
|        | REDUCER                     | NC     | NORMALLY CLOSED                       |
|        | DIRECTION OF FLOW           | NIC    | NOT IN CONTRACT                       |
|        | CAP ON END OF PIPE          | NO     | NORMALLY OPEN                         |
|        | GATE VALVE                  | PD     | PUMP DISCHARGE                        |
|        | GLOBE VALVE                 | PIV    | POST INDICATOR VALVE                  |
|        | CHECK VALVE                 | PRV    | PRESSURE REDUCING VALVE               |
|        | BALL VALVE                  | S/F    | SQUARE FEET                           |
|        | BUTTERFLY VALVE             | TYP.   | TYPICAL                               |
|        | DELUGE VALVE                |        |                                       |
|        | UNION                       |        |                                       |
|        | PIPE GUIDE/SLEEVE           |        |                                       |
|        | PRESSURE GAUGE              |        |                                       |
|        | FIRE HOSE RACK/CABINET      |        |                                       |
|        | RISER                       |        |                                       |
|        | BRANCH (TOP CONNECTION)     |        |                                       |
|        | BRANCH (BOTTOM CONNECTION)  |        |                                       |
|        | RISE OR DROP                |        |                                       |
|        | RISER DOWN                  |        | POINT OF CONNECTION                   |
|        | RISER UP                    |        | DETAIL NUMBER                         |
|        | VALVE ON RISER              |        |                                       |
|        | POST INDICATOR VALVE        |        | FIRE PROTECTION EQUIPMENT ITEM NUMBER |

9

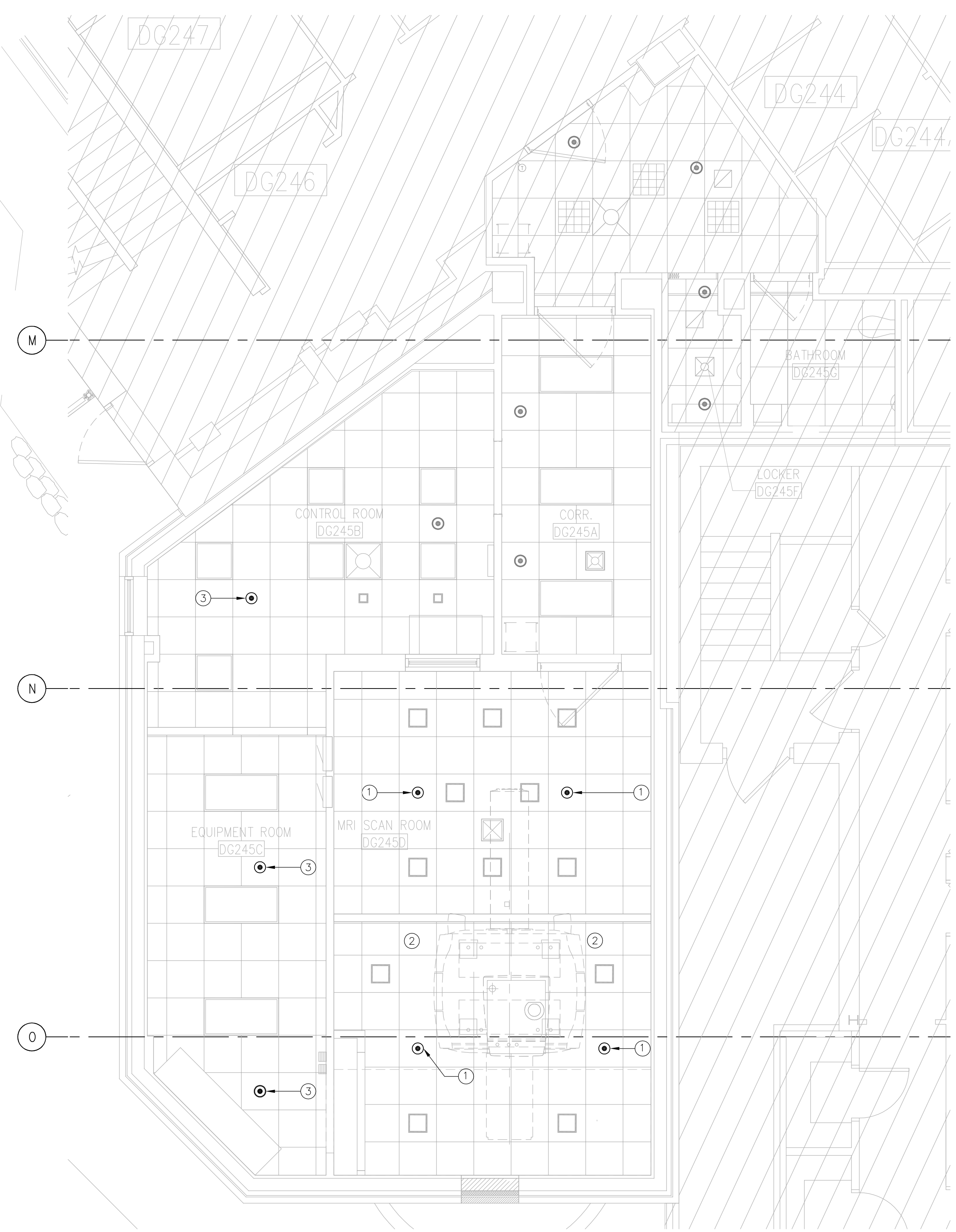
100% CONSTRUCTION DOCUMENTS- 7/14/2014 - ISSUED FOR CONSTRUCTION



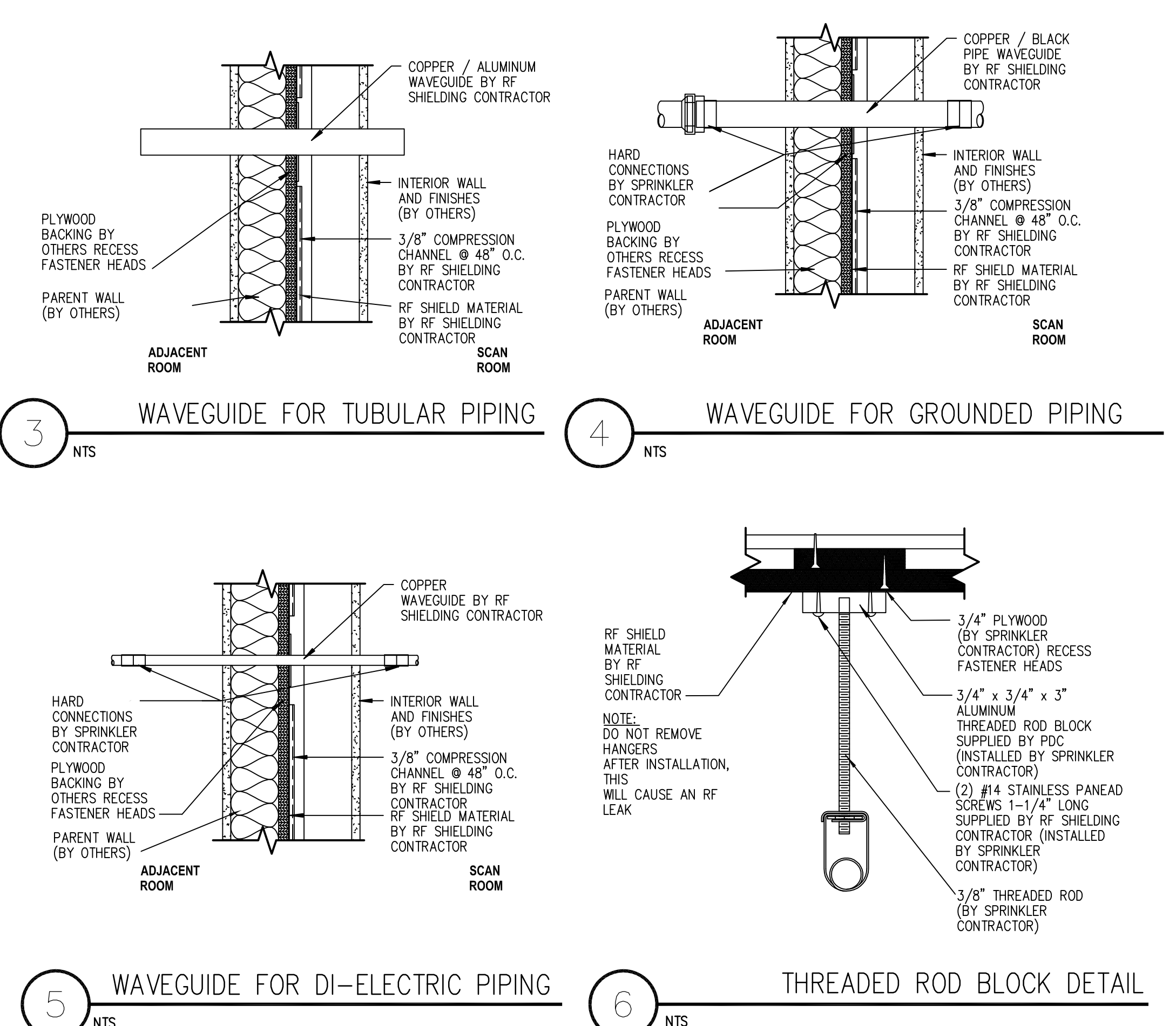
three inches = one foot  
one and one half inches = one foot  
one inch = one foot  
three quarters inch = one foot  
one half inch = one foot  
three eighths inch = one foot  
one quarter inch = one foot  
one eighth inch = one foot



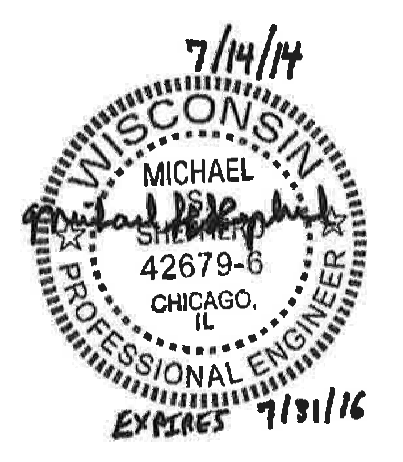
**1** FIRE PROTECTION PLAN - DEMO  
1/4" = 1'-0"



**2** FIRE PROTECTION PLAN - NEW  
1/4" = 1'-0"



- ### GENERAL NOTES
- DEMOLITION WORK SHALL BE COORDINATED WITH BUILDING OPERATIONS AND OTHER TRADES.
  - RELOCATION OF SPRINKLER HEADS SHALL NOT COMPROMISE OVERALL EFFICIENCY OF THE SPRINKLER SYSTEM.
  - INSTALLATION OF NEW WORK SHALL BE COORDINATED WITH BUILDING OPERATIONS AND OTHER TRADES.
  - ALL NEW PIPING, SPRINKLER HEADS, VALVES, HANGERS AND ASSOCIATED ACCESSORIES IN MRI SCAN ROOM SHALL BE OF NON-FERROUS MATERIALS.
  - REMOVED SPRINKLER HEADS SHALL NOT BE REUSED.
  - EXISTING WAVE GUIDES WHERE PIPING PENETRATES RADIO FREQUENCY SHIELDING SHALL REMAIN.
  - WAVEGUIDE DETAILS ABOVE ARE PROVIDED AS A REFERENCE ONLY. SPRINKLER CONTRACTOR SHALL COORDINATE WITH RF SHIELDING CONTRACTOR FOR ADEQUATE WAVEGUIDE ATTACHMENTS.
  - ALL NEW SPRINKLER HEADS SHALL BE INSTALLED IN THE CENTER OF THE CEILING TILES.
- ### DEMOLITION KEY NOTES
- REMOVE SPRINKLER HEAD IN THIS LOCATION TO ALLOW REMOVAL OF MEDICAL EQUIPMENT AND INSTALLATION OF NEW 3T MRI EQUIPMENT. CLEAN/PREPARE PIPING FOR INSTALLATION OF NEW SPRINKLER HEADS.
  - REMOVE SPRINKLER PIPING AND ASSOCIATED HANGERS LOCATED ABOVE CEILING. DO NOT REMOVE HANGER'S THREADED ROD BLOCK.
  - REMOVE EXISTING SPRINKLER HEAD IN THIS LOCATION. CLEAN/PREPARE PIPING FOR INSTALLATION OF NEW SPRINKLER HEADS.
  - REMOVE SPRINKLER HEAD AND ASSOCIATED PIPING IN THIS LOCATION TO ALLOW REMOVAL AND INSTALLATION OF MECHANICAL AND ELECTRICAL EQUIPMENT.
- ### NEW WORK KEY NOTES
- INSTALL NEW SPRINKLER HEAD IN THIS LOCATION.
  - INSTALL NEW SPRINKLER PIPING ABOVE CEILING AS REQUIRED TO ACCOMMODATE INSTALLATION OF NEW SPRINKLER HEADS. ROD BLOCKS AND PANHEADS FOR NEW HANGERS TO BE PROVIDED BY RADIO FREQUENCY SHIELDING CONTRACTOR AND TO BE INSTALLED BY SPRINKLER CONTRACTOR.
  - INSTALL NEW SPRINKLER HEAD IN THIS LOCATION. MODIFY EXISTING SPRINKLER PIPING AS REQUIRED.



|   |  |   |  |   |  |   |  |   |  |                                     |  |   |
|---|--|---|--|---|--|---|--|---|--|-------------------------------------|--|---|
| <b>KEY PLAN:</b><br>  |  | <b>ENGINEERS + CONSULTANTS:</b><br><br>Architecture<br>Interiors<br>Engineering<br>Construction<br>600 W. Fulton Street<br>Chicago, IL 60661-1259<br>T: 312.454.9100<br>www.epsteinglobal.com |  | <b>ARCHITECT + ENGINEERS:</b><br><br>700 Nicholas Blvd. Suite 403<br>Elk Grove Village, IL 60007<br>T: 847.952.9362 F: 847.952.9403 |  | <b>Drawing Title</b><br>FIRE PROTECTION FLOOR PLANS |  | <b>Project Title</b><br>William S. Middleton<br>VA Hospital<br>SITE PREP FOR 3T MRI |  | <b>Project Number</b><br>607-14-110 |  | <b>Office of<br/>Construction<br/>and Facilities<br/>Management</b><br> |
| <b>Approved Project Director</b><br>MADISON, WISCONSIN  |  | <b>Date</b><br>7/14/2014  |  | <b>Checked</b><br>PV  |  | <b>Drawn</b><br>CE                                  |  | <b>Drawing Number</b><br>FP-101   |  |                                     |  |   |
| <b>100% SUBMITTAL</b><br>7/14/2014<br><b>95% SUBMITTAL</b><br>5/20/2014<br><b>75% SUBMITTAL</b><br>3/11/2014<br><b>Revisions:</b><br>Date |  |   |  |   |  |   |  |   |  |                                     |  |   |