

GENERAL NOTES

- A THE INTENTION OF PHASE 1 IS TO MAKE PREPARATIONS TO SWITCH OVER TO TEMPORARY COOLING.
- B REFER TO SHEET M001 FOR LEGEND, ABBREVIATIONS AND ADDITIONAL GENERAL NOTES.

NOTES

1. EXISTING AIR HANDLING UNIT TO REMAIN.
2. EXISTING DUCTWORK TO REMAIN.
3. EXISTING PIPING TO REMAIN.
4. PIPING BEING REMOVED UNDER PROJECT NUMBER 539-13-107.
5. PROVIDE PLENUM BOX FULL SIZE OF OUTSIDE AIR CONNECTION.
6. FASTEN UNIT TO FLOOR OR SUSPEND FROM STRUCTURE WITH VIBRATION ISOLATORS.
7. PROVIDE MANUAL DAMPER, FOR BALANCING OR ISOLATION IN PHASE 2.
8. CONNECTION TO EXISTING UTILITY SHALL TAKE PLACE AT NIGHT, ON A HOLIDAY, OR OVER A WEEKEND. COORDINATE WITH PROJECT ENGINEER.
9. TRANSITION DUCT TO FULL SIZE OF UNIT CONNECTION. PROVIDE FLEXIBLE DUCT CONNECTOR.
10. PROVIDE TEMPORARY 1/20 HP AUTOMATIC CONDENSATE DRAIN PUMP WITH 80GPH CAPACITY, 115V CORD AND PLUG.
11. DISCHARGE CONDENSATE INTO EXISTING FLOOR DRAIN.
12. TERMINATE DUCT FOR EXTENSION IN PHASE 2.
13. REMOVE EXISTING DUCTWORK AND ASSOCIATED DAMPERS, SUPPORTS, ETC.
14. REMOVE EXISTING DUCTWORK BACK TO THIS POINT AND CAP FOR RECONNECTION IN PHASE 2.
15. REFER TO ENLARGED PLAN ON THIS SHEET FOR MORE DETAIL.
16. EXISTING RETURN FAN TO REMAIN.
17. EXISTING OUTSIDE AIR INTAKE PLENUM.

BID ITEM 4

DELETE ALL WORK ON THE SHEET AND PROVIDE SIX 1.5 TON TEMPORARY 120V CORD AND PLUG TEMPORARY INDOOR COOLING UNITS WHILE 1-AHU21 IS OUT OF SERVICE. LOCATE UNITS AND EXTEND HEAT DISCHARGE DUCTS AS DIRECTED BY PROJECT ENGINEER.

FAN COIL UNIT NOTES

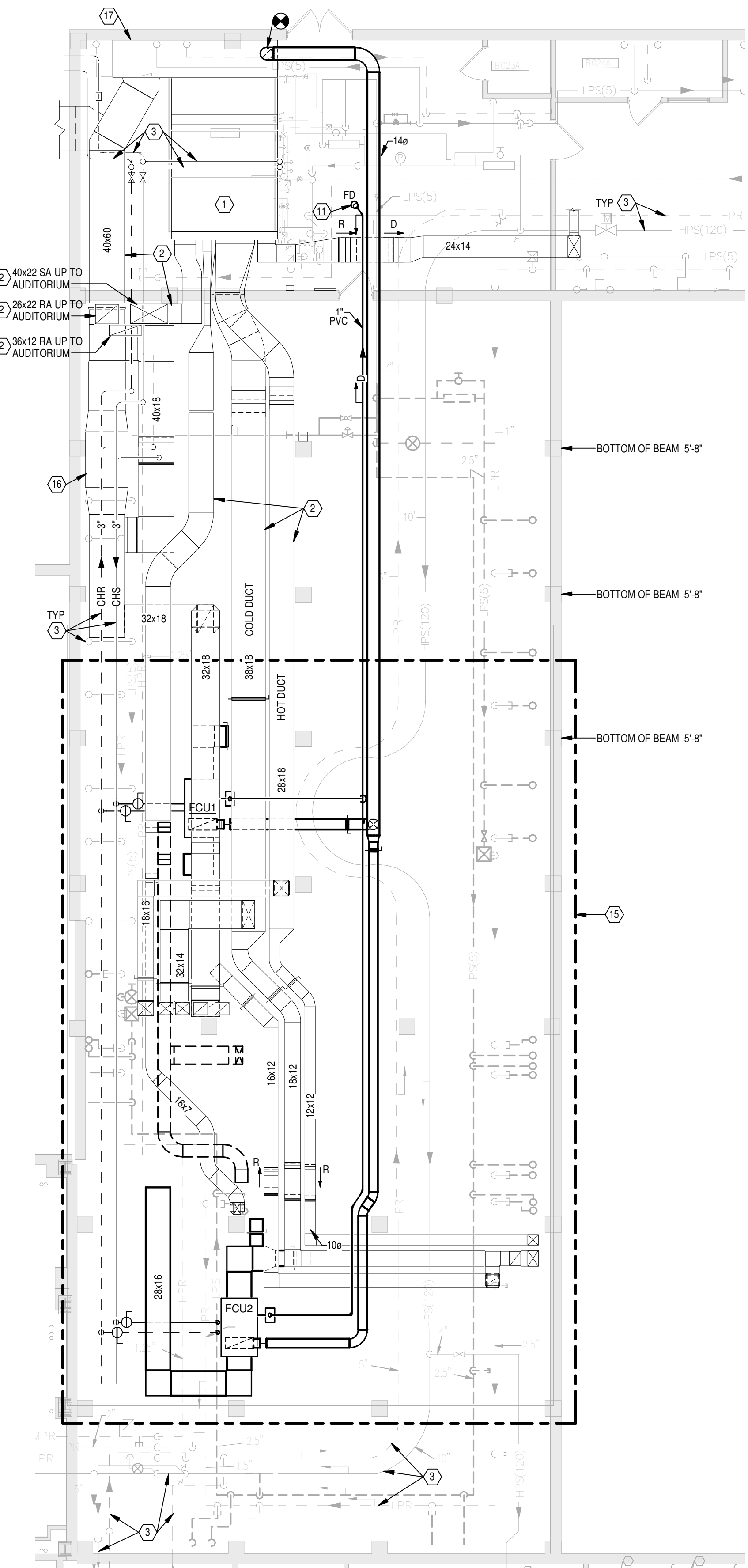
- 1 SHUT-OFF VALVE
- 2 UNION
- 3 MANUAL AIR VENT
- 4 AUTOMATIC TWO-PORT, NORMALLY OPEN CONTROL VALVE
- 5 0.75" CONDENSATE DRAIN PIPE. CONNECT TO UNIT PAN WITH FLEXIBLE POLYETHYLENE TUBING
- 6 FLOW CONTROLLER WITH INTEGRAL PRESSURE-TEMPERATURE TEST PLUGS
- 7 STRAINER
- 8 PRESSURE-TEMPERATURE TEST PLUG
- 9 SAME SIZE AS RUNOUT PIPING AND FACTORY ASSEMBLED.
- 10 REDUCER, IF REQUIRED.

FAN-COIL UNIT PIPING

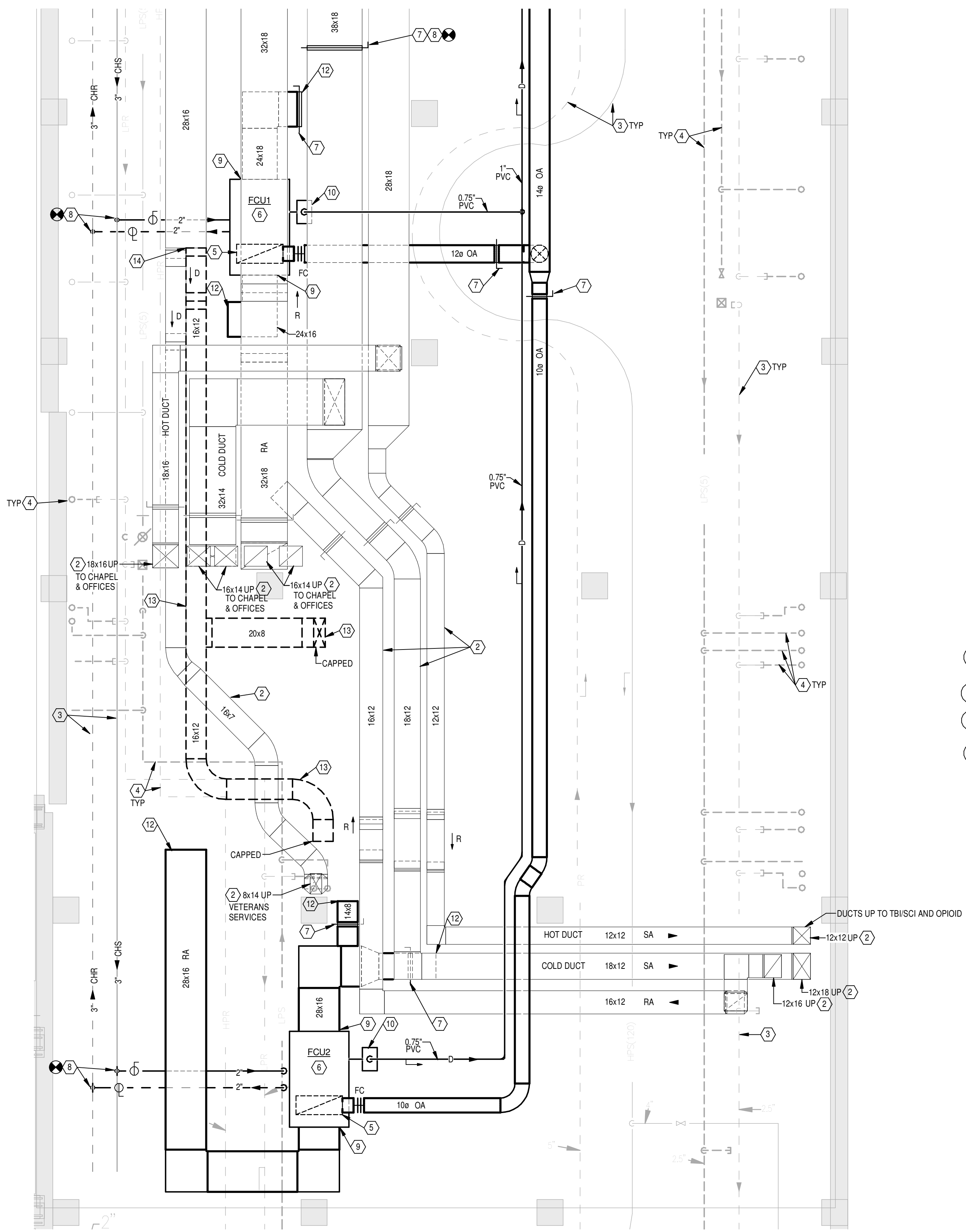
SCALE: NONE

WALL RATINGS

- 2 HOUR RATED FIRE WALL
- 1 HOUR RATED FIRE WALL
- 2 HOUR RATED FIRE/SMOKE WALL
- 1 HOUR RATED FIRE/SMOKE WALL
- 1 HOUR RATED SMOKE WALL



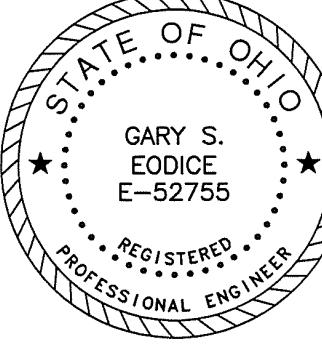
PHASE 1 - BASEMENT FLOOR PLAN - DUCTWORK



PHASE 1 - ENLARGED BASEMENT FLOOR PLAN

Revisions	Amendment 1	10/20/2014
1		

CONSULTANTS:



ARCHITECT/ENGINEERS:

**Heapy Engineering**

MEP Design Technology Planning Commissioning Energy

Nationally Recognized Leader in Sustainability

1400 W Dorothy Lane, Dayton, OH 45409-1310

Ph 937-224-0861 Fax 937-224-5777 www.heapy.com

HEAPY PROJECT No.: 2013-04024 FIRM LICENSE No.: 01528

Drawing Title
PHASE 1 - BASEMENT FLOOR PLAN
Approved: Project Director

Project Title
INSTALL NEW HVAC IN AUDITORIUM
Location
Cincinnati, Ohio
Date
05/23/2014
Checked
DLE
Drawn
WJS
Project No.
VA Project No. 539-15-202
Building Number
1
Drawing Number
MH101
Dwg. of
xx
Office of Construction and Facilities Management
Department of Veterans Affairs