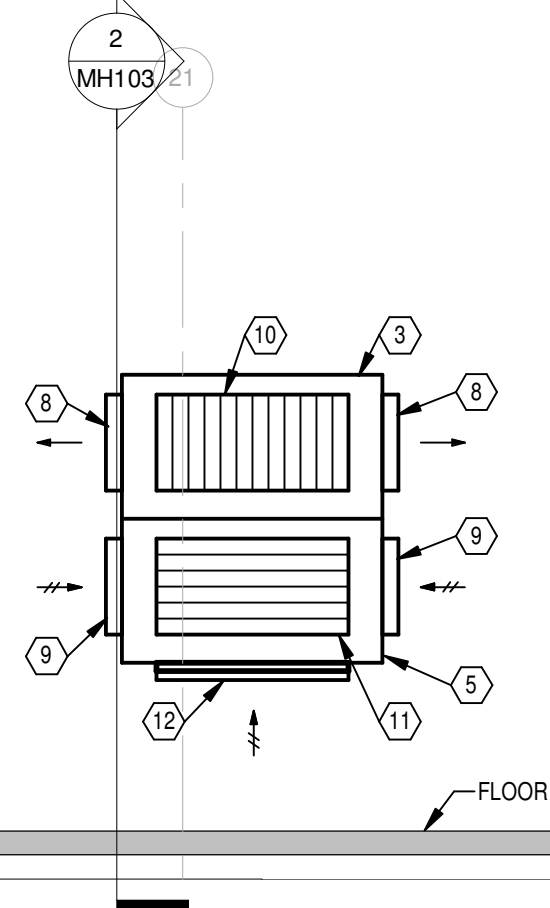


2 TEMPORARY A/C UNIT SECTION

Scale: 1/4" = 1'-0"



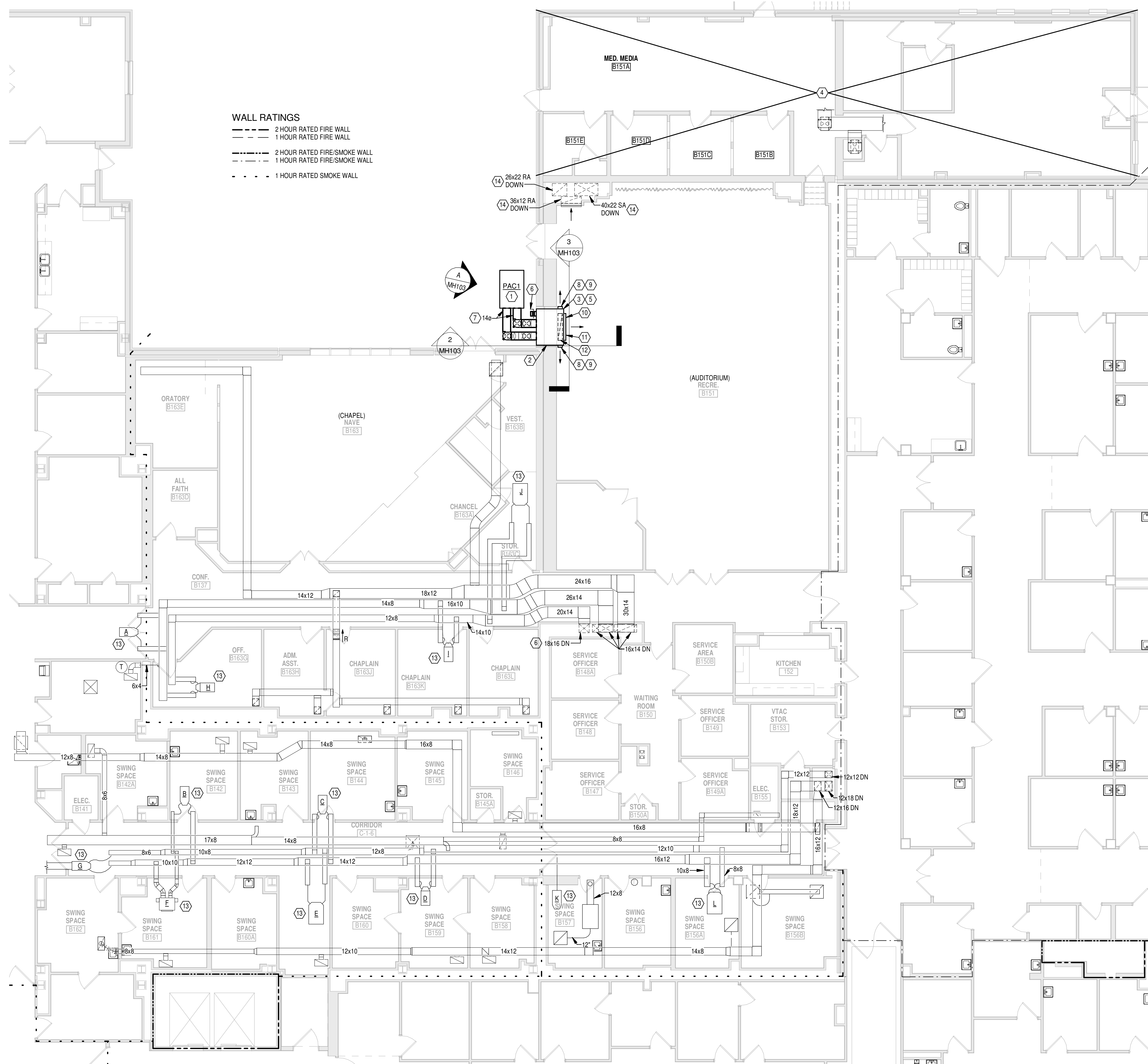
3 SHEET METAL PLENUM BOX SECTION

Scale: 1/4" = 1'-0"



PICTURE "A"

SCALE: N.T.S.



PHASE 2 - FIRST FLOOR PLAN

Scale: 1/8" = 1'-0"

GENERAL NOTES

- WORK ON THIS SHEET SHALL TAKE PLACE OVER A WEEKEND.
- THE INTENTION OF PHASE 2 IS TO TIE-IN TEMPORARY COOLING SYSTEMS AND PREPARE FOR AHU21 SHUT DOWN AND REPLACEMENT.
- REFER TO SHEET M001 FOR LEGEND, ABBREVIATIONS AND ADDITIONAL GENERAL NOTES.

NOTES

- PROVIDE TEMPORARY AIR CONDITIONING UNIT FOR AUDITORIUM DURING REPLACEMENT OF AHU21.
- REMOVE WINDOW FOR TEMPORARY AIR CONDITIONING OF AUDITORIUM. SET ASIDE FOR REINSTALLATION IN PHASE 3.
- PROVIDE DOUBLE WALL INSULATED SHEET METAL PLENUM BOX HALF THE SIZE OF WINDOW OPENING FOR SUPPLY AIR.
- TEMPORARY AIR CONDITIONING OF MEDICAL MEDIA IS BEING PROVIDED BY VA OUTSIDE OF THIS PROJECT SCOPE.
- PROVIDE SHEET METAL PLENUM BOX HALF THE SIZE OF WINDOW OPENING FOR RETURN AIR.
- PROVIDE TQ2-8"x24" RETURN AIR GRILLE AND MANUAL DAMPER. BALANCE TO 480 CFM OUTSIDE AIR.
- EXTEND SUPPLY AND RETURN DUCTWORK FROM TEMPORARY A/C UNIT TO SHEET METAL PLENUM BOX.
- PROVIDE TQ1-8"x24" SUPPLY AIR GRILLE. AIR DEVICE TO SUPPLY APPROXIMATELY 600CFM. NO BALANCING REQUIRED.
- PROVIDE TQ3-8"x24" RETURN AIR GRILLE. AIR DEVICE TO RETURN APPROXIMATELY 430 CFM. NO BALANCING REQUIRED.
- PROVIDE TQ1-48"x24" SUPPLY AIR GRILLE. AIR DEVICE TO SUPPLY APPROXIMATELY 3600CFM. NO BALANCING REQUIRED.
- PROVIDE TQ2-48"x24" RETURN AIR GRILLE. AIR DEVICE TO RETURN APPROXIMATELY 2590 CFM. NO BALANCING REQUIRED.
- PROVIDE TQ3-8"x24" RETURN AIR GRILLE ON BOTTOM OF PLENUM BOX. AIR DEVICE TO RETURN APPROXIMATELY 870 CFM. NO BALANCING REQUIRED.
- EXISTING AIR TERMINAL UNIT TO REMAIN.
- EXISTING DUCTWORK TO REMAIN.

BID ITEM 3

DELETE ALL WORK ON THE SHEET AND PROVIDE FOUR 1.5 TON TEMPORARY 120V CORD AND PLUG TEMPORARY INDOOR COOLING UNITS WHILE 1-AHU21 IS OUT OF SERVICE.