

three inches = one foot  
one and one-half inches = one foot  
one inch = one foot  
three-quarters inch = one foot  
one-half inch = one foot  
three-eighths inch = one foot  
one-quarter inch = one foot  
one-eighth inch = one foot

### GENERAL NOTES

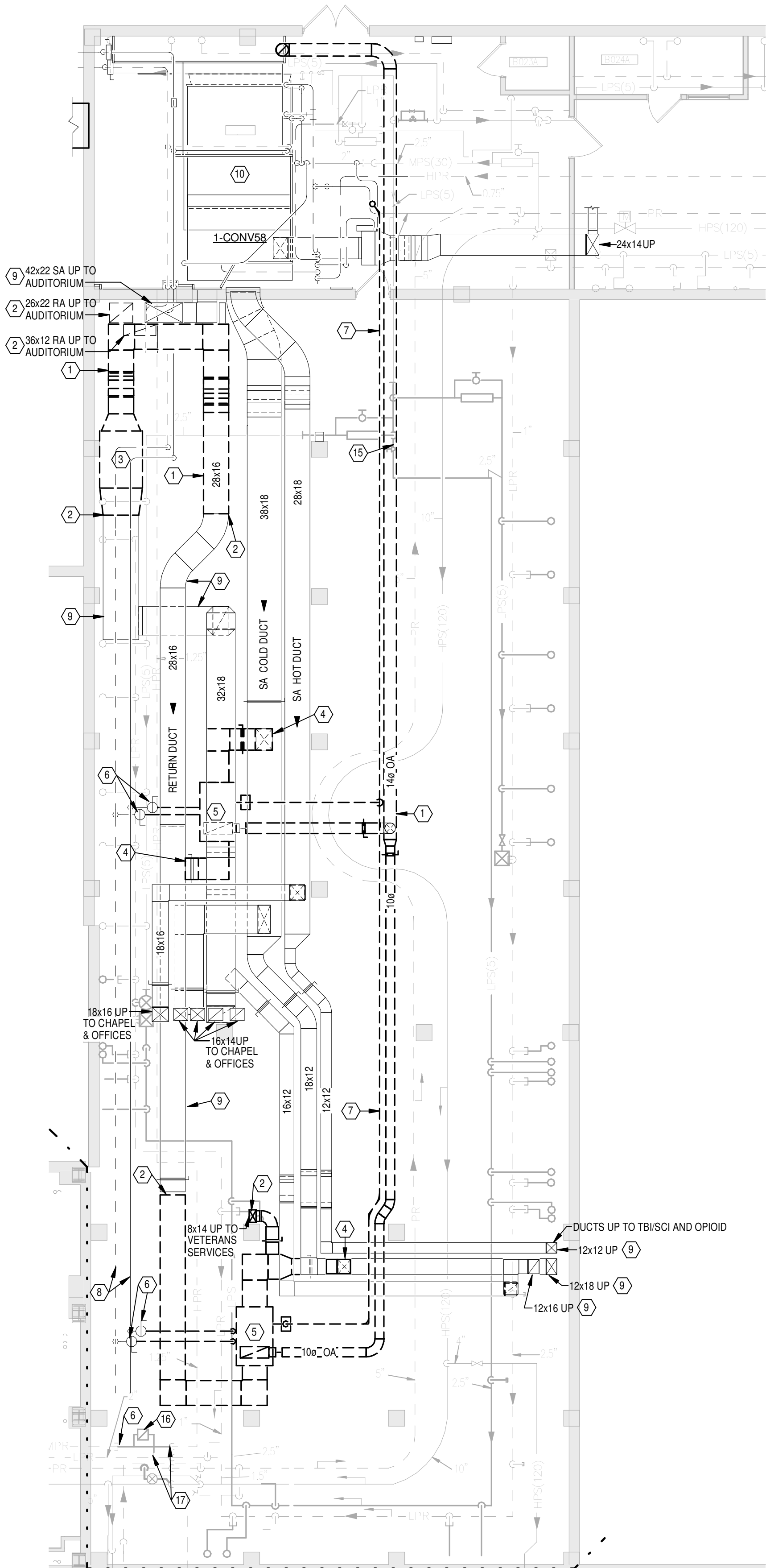
- A WORK ON THIS SHEET SHALL TAKE PLACE OVER A WEEKEND.  
B THE INTENTION OF PHASE 4 IS TO REMOVE TEMPORARY COOLING SYSTEMS IN BASEMENT AND FINALIZE REPLACEMENT AND START-UP OF AHU21.  
C REFER TO SHEET M001 FOR LEGEND, ABBREVIATIONS AND ADDITIONAL GENERAL NOTES.

### NOTES

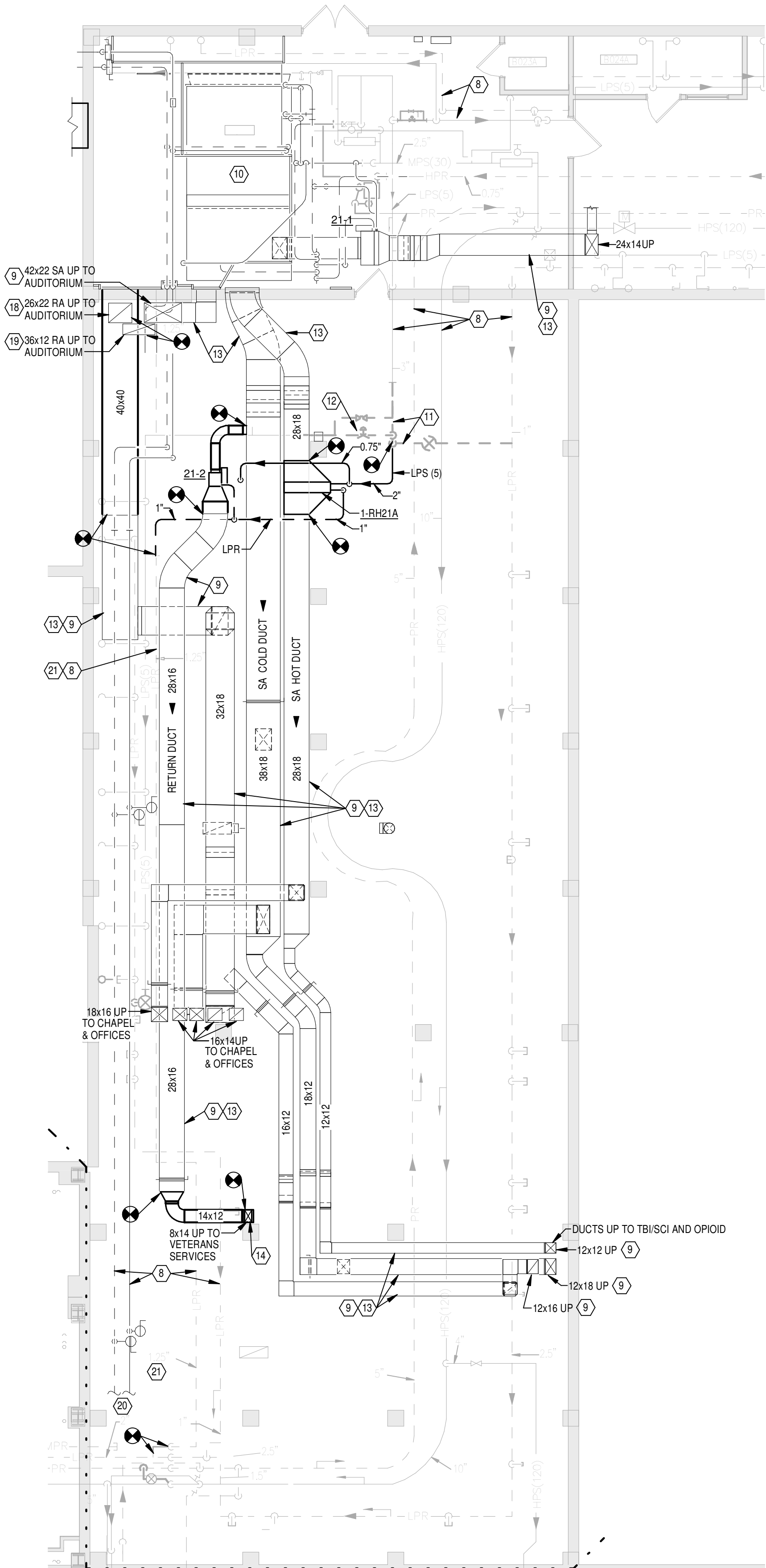
- REMOVE EXISTING DUCTWORK AND ASSOCIATED DAMPERS, SUPPORTS, ETC.
- REMOVE DUCTWORK BACK TO THIS POINT FOR RECONNECTION IN NEW WORK.
- REMOVE EXISTING RETURN FAN AND ASSOCIATED DUCTWORK, CONTROLS, ETC.
- REMOVE DUCTWORK BACK TO THIS POINT AND CAP.
- REMOVE EXISTING FAN COIL UNIT AND ASSOCIATED DUCTWORK, PIPING, ETC. TURN FAN COIL UNIT AND CONDENSATE PUMP OVER TO OWNER.
- REMOVE EXISTING PIPING BACK TO THIS POINT AND CAP.
- REMOVE EXISTING PIPING AND ASSOCIATED HANGERS, ETC.
- EXISTING PIPING TO REMAIN.
- EXISTING DUCTWORK TO REMAIN.
- NEW AIR HANDLING UNIT.
- PIPING BEING PROVIDED UNDER VA PROJECT NUMBER 539-13-107.
- NEW CONTROL VALVE BEING PROVIDED UNDER VA PROJECT NUMBER 539-13-107.
- IN PHASE 3, ALL EXISTING 1" AHU21 SUPPLY DUCTWORK UPSTREAM OF AIR TERMINAL UNITS SHALL BE TESTED AND SEALED USING "AEROSEAL" PRODUCT. AFTER SPECIFIED TRADITIONAL DUCT SEALING PROCESS IS COMPLETE, THE "AEROSEAL" DUCT SEALING SHALL BE DELETED UNDER BID ITEM 2.
- TRANSITION AND CONNECT TO EXISTING DUCT BELOW FLOOR SLAB.
- REMOVE SECTION OF PIPE AS REQUIRED FOR EXTENSION IN NEW WORK.
- REMOVE CONDENSATE TRAP AND ASSOCIATED PIPING, ETC.
- REMOVE PIPING BACK TO THIS POINT FOR RECONNECTION IN NEW WORK.
- EXTEND DUCT DOWN AND CONNECT TO NEW 40x40 RETURN AIR DUCT.
- EXTEND TWO 12x12 DUCTS FROM EXISTING 36x12 DUCT AND CONNECT TO NEW 40x40 RETURN AIR DUCT.
- EXTEND 1.25" LPR AND TIE INTO EXISTING.
- EXISTING HPR PIPE TO BE USED AS LPR.

### WALL RATINGS

- 2 HOUR RATED FIRE WALL  
1 HOUR RATED FIRE WALL  
2 HOUR RATED FIRE/SMOKE WALL  
1 HOUR RATED FIRE/SMOKE WALL  
1 HOUR RATED SMOKE WALL



**PHASE 4 - BASEMENT FLOOR PLAN - REMOVALS**  
Scale: 1/8" = 1'-0"



**PHASE 4 - BASEMENT FLOOR PLAN - NEW WORK**  
Scale: 1/8" = 1'-0"

<div>10/20/2014 8:15:49 AM</div> <table><tr><td>1</td><td>Amendment 1</td><td>10/20/2014</td></tr><tr><td>Revisions</td><td></td><td>Date</td></tr></table>			1	Amendment 1	10/20/2014	Revisions		Date	CONSULTANTS:			<div><div><div>STATE OF OHIO</div><div>GARY S. EDDICE</div><div>E-52755</div><div>REGISTERED PROFESSIONAL ENGINEER</div></div></div>	ARCHITECT/ENGINEERS: <div><div><div><div>h</div><div>Heapy Engineering</div><div>MEP Design Technology Planning Commissioning Energy</div><div>Nationally Recognized Leader in Sustainability</div></div><div>1400 W Dorothy Lane, Dayton, OH 45409-1310</div><div>Ph 937-224-0861 Fax 937-224-5777 www.heapy.com</div><div>HEAPY PROJECT No.: 2013-04024 FIRM LICENSE No.: 01528</div></div></div>			<div>Drawing Title</div> <div>PHASE 4 - BASEMENT FLOOR PLANS</div> <div>Approved: Project Director</div>			<div>Project Title</div> <div>INSTALL NEW HVAC IN AUDITORIUM</div> <div>LocationCincinnati, Ohio</div> <div>Date05/23/2014</div> <div>CheckedDLE</div> <div>DrawnWJS</div>			<div>Project No.</div> <div>VA Project No. 539-15-202</div> <div>Building Number</div> <div>1</div> <div>Drawing Number</div> <div>MH105</div> <div>Dwg. of xx</div> <div><div>Office of Construction and Facilities Management</div><div>Department of Veterans Affairs</div></div>		
1	Amendment 1	10/20/2014																						
Revisions		Date																						