

DEMOLITION PLAN LEGEND:

- NOTES:
1. SEE MECHANICAL DRAWINGS FOR PLUMBING, HVAC AND FIRE PROTECTION DEMOLITION.
 2. SEE ELECTRICAL DRAWINGS FOR POWER, LIGHTING AND COMMUNICATIONS DEMOLITION.
 3. SEE ASBESTOS ABATEMENT DRAWINGS FOR ABATEMENT WORK.

REMOVE INTERIOR PARTITION FROM FLOOR TO UNDERSIDE OF STRUCTURE ABOVE. PREPARE ALL ADJACENT SURFACES TO RECEIVE NEW CONSTRUCTION AND SCHEDULED FINISH.

- REMOVE DOOR, FRAME AND HARDWARE
- TEMPORARY CONSTRUCTION PARTITION
- EXISTING TEMPORARY DOOR

- PROTECT EXISTING ELECTRICAL CHASE DURING ALL CONSTRUCTION PHASES.
- REMOVE LEAD LINED WALLS AND DOORS. SEE ABATEMENT DRAWINGS AND SPECIFICATIONS.
- REMOVE EXISTING CEILING SYSTEM, SUPPORTS, TIES, AND RELATED EQUIPMENT. COORDINATE WITH ELECTRICAL WORK ON REMOVAL, AND/OR RELOCATION OF LIGHTS, CONDUIT, TIES, SUPPORTS AND RELATED WIRING. COORDINATE WITH MECHANICAL ON REMOVAL OF DIFFUSERS, GRILLES AND RELATED DUCTWORK AND EQUIPMENT. CONTRACTOR SHALL VERIFY FIXTURES FOR SALVAGE OR RELOCATION PRIOR TO COMMENCING DEMOLITION.

- REMOVE EXISTING FLOOR FINISH AND BASE FROM ENTIRE ROOM TO TOP OF STRUCTURAL SLAB OR SUBFLOOR AS REQUIRED FOR NEW CONSTRUCTION. PATCH AND LEVEL EXISTING FLOOR TO RECEIVE NEW FLOOR FINISH AS SCHEDULED. LEVEL PER NEW FLOOR FINISH MANUFACTURER'S RECOMMENDATIONS. PATCH EXISTING WALL AS REQUIRED TO RECEIVE NEW WALL BASE AS SCHEDULED.
- APPROXIMATE AREA OF EXISTING DEPRESSED SLAB.
- REMOVE PORTION OF WALL AS REQUIRED FOR NEW OPENING. PATCH AND PREPARE ADJACENT SURFACES TO MATCH EXISTING OR SCHEDULED FINISH. TEMPORARILY PROTECT ADJACENT OCCUPIED AREAS UNTIL WORK IS COMPLETED.

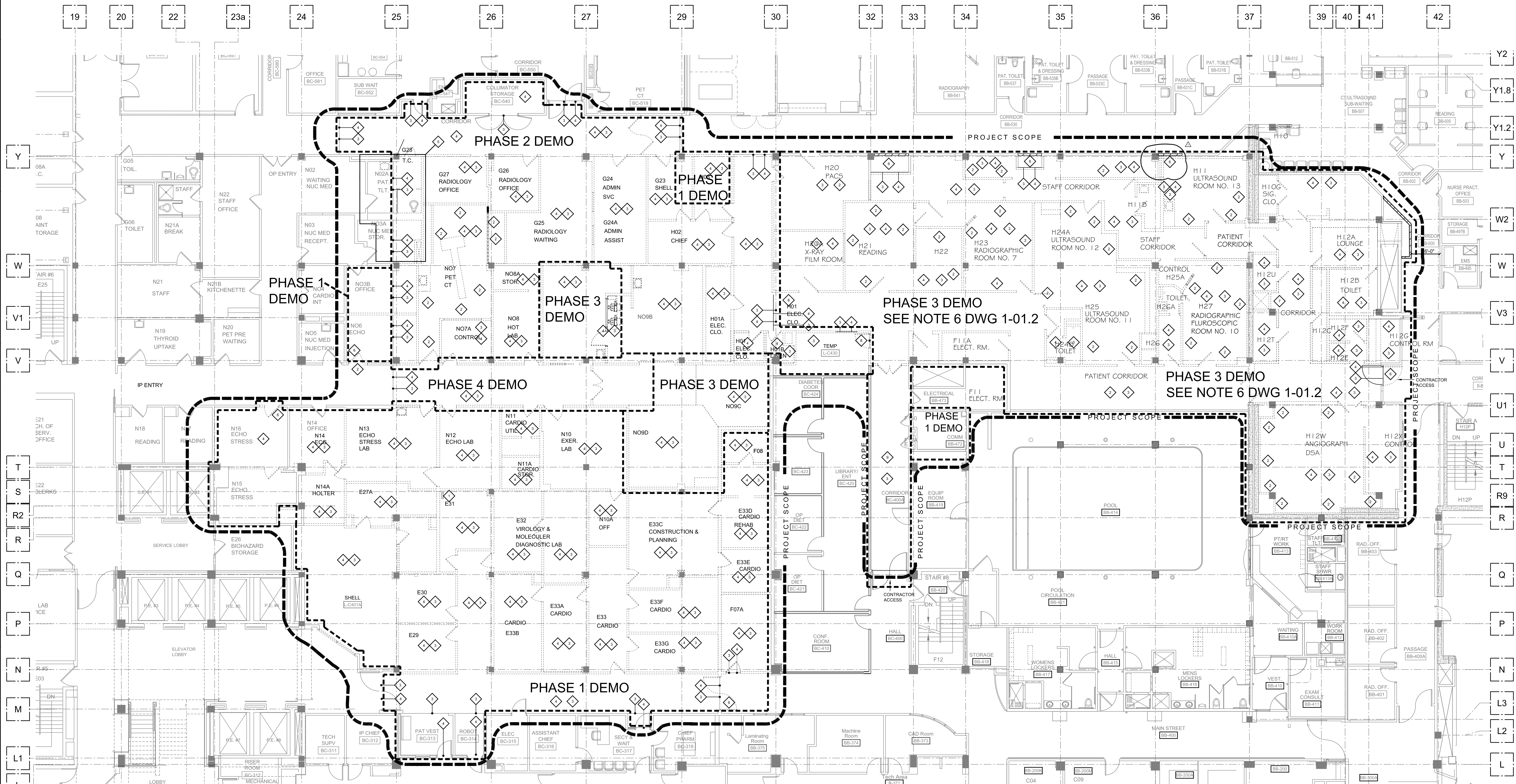
- REMOVE PORTION OF WALL AS REQUIRED FOR NEW OPENING.
- REMOVE EXISTING DUMBWATER IN ITS ENTIRETY THROUGH OUT THE PROJECT AREA
- TEMPORARILY SEAL DOORS DURING CONSTRUCTION
- REMOVE EXISTING FLOORING

KEY PLAN - BASEMENT

Scale = None

NORTH

TRUE NORTH



Partial Basement Floor Demolition Plan

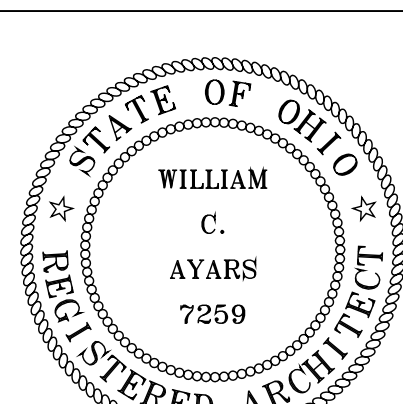
Scale 1/8" = 1'-0"

Amendment 03	10/21/14
Bid Issue	01/17/14
Revisions:	Date

CONSULTANTS:

FREDRICK, FREDRICK & HELLER ENGINEERS, INC.
672 EAST ROYALTON ROAD
BROADVIEW HTS., OHIO 44147
TEL: (440) 546-9696
FAX: (440) 546-9699

BARBER & HOFFMAN, INC.
Consulting Engineers
2217 East 9th Street, Suite 350
Cleveland OH 44115-1257
216-875-0100 / (F) 216-875-0111
barberhoffman.com



ARCHITECT:

Perspectus architecture
13212 Shaker Square Suite 204 Cleveland, Ohio 44120
P. 216.752.1800 F. 216.752.3833

DESIGN AND CONSTRUCTION DOCUMENTS AS INSTRUMENTS OF SERVICE ARE GIVEN IN CONFIDENCE AND REMAIN THE PROPERTY OF PERSPECTUS ARCHITECTURE. THE USE OF THIS DESIGN AND THESE CONSTRUCTION DOCUMENTS FOR PURPOSES OTHER THAN THE SPECIFIC PROJECT NAMED HEREIN IS STRICTLY PROHIBITED WITHOUT THE WRITTEN CONSENT OF PERSPECTUS ARCHITECTURE.

Drawing Title
PARTIAL BASEMENT DEMOLITION PLAN - ALL PHASES

Approved: Project Director

Project Title
EXPAND AND RENOVATE NUCLEAR MEDICINE AND RADIOLOGY

Location
VAMC - WADE PARK

Date
1-17-2014

Checked
RN

Drawn
PRM

Project Number
541-14-101

Building Number
1

Drawing Number

1-03.1

Dwg. of

FULLY SPRINKLERED

Office of Facilities Management

Department of Veterans Affairs