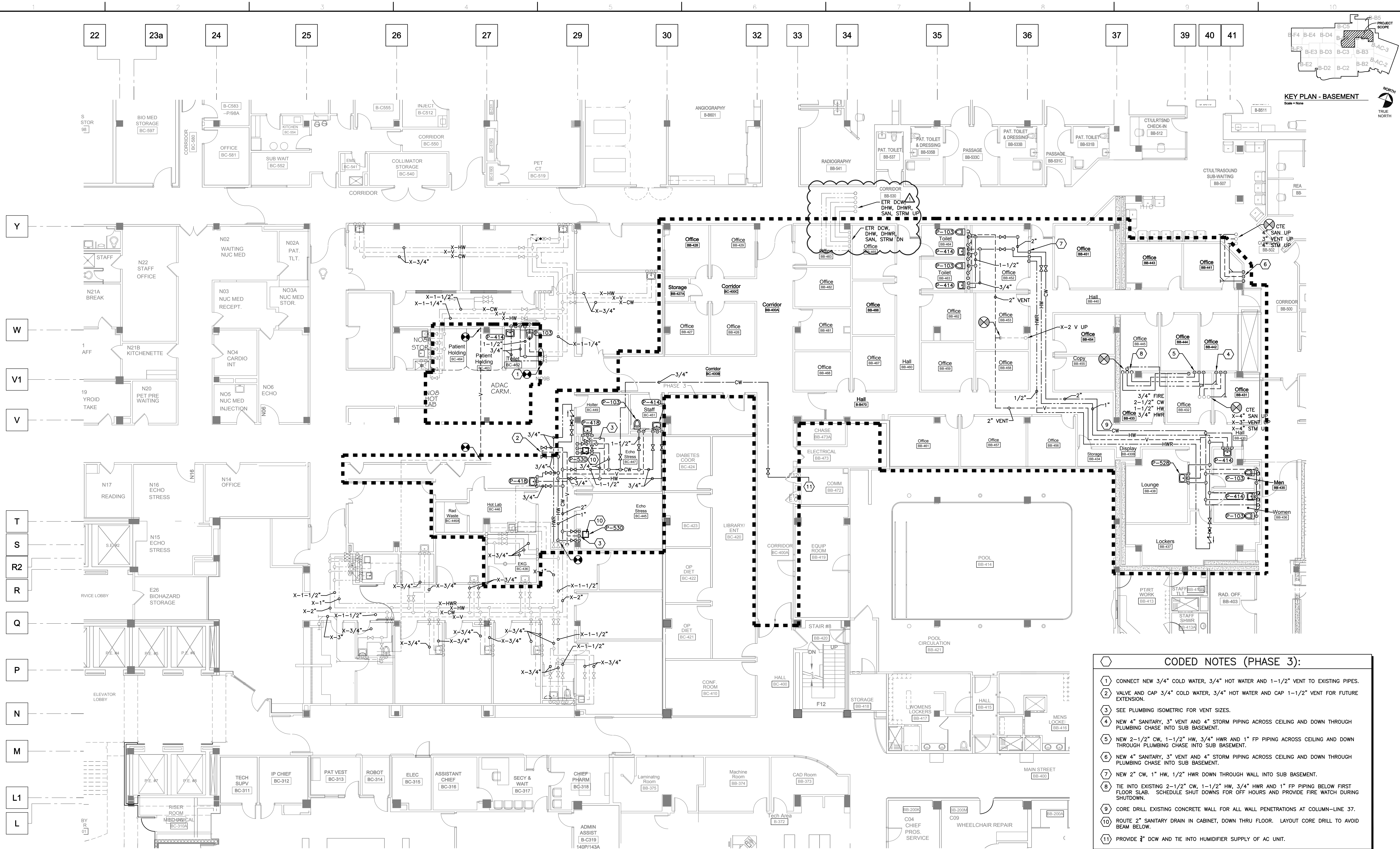


three eighths inch = one foot  
one eighth inch = one foot  
one quarter inch = one foot  
one half inch = one foot  
one inch = one foot  
one and one half inch = one foot  
two inch = one foot  
three inch = one foot  
four inch = one foot  
five inch = one foot  
six inch = one foot  
seven inch = one foot  
eight inch = one foot  
nine inch = one foot  
ten inch = one foot  
eleven inch = one foot  
twelve inch = one foot  
thirteen inch = one foot  
fourteen inch = one foot  
fifteen inch = one foot  
sixteen inch = one foot  
seventeen inch = one foot  
eighteen inch = one foot  
nineteen inch = one foot  
twenty inch = one foot  
twenty one inch = one foot  
twenty two inch = one foot  
twenty three inch = one foot  
twenty four inch = one foot  
twenty five inch = one foot  
twenty six inch = one foot  
twenty seven inch = one foot  
twenty eight inch = one foot  
twenty nine inch = one foot  
thirty inch = one foot  
thirty one inch = one foot  
thirty two inch = one foot  
thirty three inch = one foot  
thirty four inch = one foot  
thirty five inch = one foot  
thirty six inch = one foot  
thirty seven inch = one foot  
thirty eight inch = one foot  
thirty nine inch = one foot  
forty inch = one foot  
forty one inch = one foot  
forty two inch = one foot  
forty three inch = one foot  
forty four inch = one foot  
forty five inch = one foot  
forty six inch = one foot  
forty seven inch = one foot  
forty eight inch = one foot  
forty nine inch = one foot  
fifty inch = one foot  
fifty one inch = one foot  
fifty two inch = one foot  
fifty three inch = one foot  
fifty four inch = one foot  
fifty five inch = one foot  
fifty six inch = one foot  
fifty seven inch = one foot  
fifty eight inch = one foot  
fifty nine inch = one foot  
sixty inch = one foot  
sixty one inch = one foot  
sixty two inch = one foot  
sixty three inch = one foot  
sixty four inch = one foot  
sixty five inch = one foot  
sixty six inch = one foot  
sixty seven inch = one foot  
sixty eight inch = one foot  
sixty nine inch = one foot  
seventy inch = one foot  
seventy one inch = one foot  
seventy two inch = one foot  
seventy three inch = one foot  
seventy four inch = one foot  
seventy five inch = one foot  
seventy six inch = one foot  
seventy seven inch = one foot  
seventy eight inch = one foot  
seventy nine inch = one foot  
eighty inch = one foot  
eighty one inch = one foot  
eighty two inch = one foot  
eighty three inch = one foot  
eighty four inch = one foot  
eighty five inch = one foot  
eighty six inch = one foot  
eighty seven inch = one foot  
eighty eight inch = one foot  
eighty nine inch = one foot  
ninety inch = one foot  
ninety one inch = one foot  
ninety two inch = one foot  
ninety three inch = one foot  
ninety four inch = one foot  
ninety five inch = one foot  
ninety six inch = one foot  
ninety seven inch = one foot  
ninety eight inch = one foot  
ninety nine inch = one foot  
one hundred inch = one foot



PARTIAL BASEMENT PLUMBING PLAN - PHASE 3  
SCALE: 1/8" = 1'-0"  
1

- CODED NOTES (PHASE 3):**
- CONNECT NEW 3/4" COLD WATER, 3/4" HOT WATER AND 1-1/2" VENT TO EXISTING PIPES.
  - VALVE AND CAP 3/4" COLD WATER, 3/4" HOT WATER AND CAP 1-1/2" VENT FOR FUTURE EXTENSION.
  - SEE PLUMBING ISOMETRIC FOR VENT SIZES.
  - NEW 4" SANITARY, 3" VENT AND 4" STORM PIPING ACROSS CEILING AND DOWN THROUGH PLUMBING CHASE INTO SUB BASEMENT.
  - NEW 2-1/2" CW, 1-1/2" HW, 3/4" HWR AND 1" FP PIPING ACROSS CEILING AND DOWN THROUGH PLUMBING CHASE INTO SUB BASEMENT.
  - NEW 4" SANITARY, 3" VENT AND 4" STORM PIPING ACROSS CEILING AND DOWN THROUGH PLUMBING CHASE INTO SUB BASEMENT.
  - NEW 2" CW, 1" HW, 1/2" HWR DOWN THROUGH WALL INTO SUB BASEMENT.
  - TIE INTO EXISTING 2-1/2" CW, 1-1/2" HW, 3/4" HWR AND 1" FP PIPING BELOW FIRST FLOOR SLAB. SCHEDULE SHUT DOWNS FOR OFF HOURS AND PROVIDE FIRE WATCH DURING SHUTDOWN.
  - CORE DRILL EXISTING CONCRETE WALL FOR ALL WALL PENETRATIONS AT COLUMN-LINE 37.
  - ROUTE 2" SANITARY DRAIN IN CABINET, DOWN THRU FLOOR. LAYOUT CORE DRILL TO AVOID BEAM BELOW.
  - PROVIDE 3" CW AND TIE INTO HUMIDIFIER SUPPLY OF AC UNIT.

<b>CONSULTANTS:</b>		<b>ARCHITECT:</b>		<b>Project Title</b>		<b>Project Number</b>		<b>Office of Facilities Management</b>	
 <b>FREDRICK, FREDRICK &amp; HELLER ENGINEERS, INC.</b> 672 EAST ROYALTON ROAD BROADVIEW HTS., OHIO 44147 TEL: (440) 546-8888 FAX: (440) 546-8889		 <b>Perspectus</b> architecture 13212 Shaker Square Suite 204 Cleveland, Ohio 44120 P. 216.752.1800 F. 216.752.3833		<b>EXPAND AND RENOVATE NUCLEAR MEDICINE AND RADIOLOGY</b>		541-14-101		<b>Department of Veterans Affairs</b>	
 <b>BARBER &amp; HOFFMAN, INC.</b> Consulting Engineers 2217 East 9th Street, Suite 350 Cleveland OH 44115-1257 216-875-0100/(F) 216-875-0111 barberhoffman.com		 <b>Brian Widowski</b> Professional Engineer FFH #13027		<b>Location</b> <b>VAMC - WADE PARK</b>		Building Number 1		<b>1-P5.3</b>	
Amendment 03 Bid Issue Revisions:		Approved: Project Director		Date 1-17-2014		Checked BMW		Dwg. of	
10/21/14 01/17/14 Date				Drawn DAD					