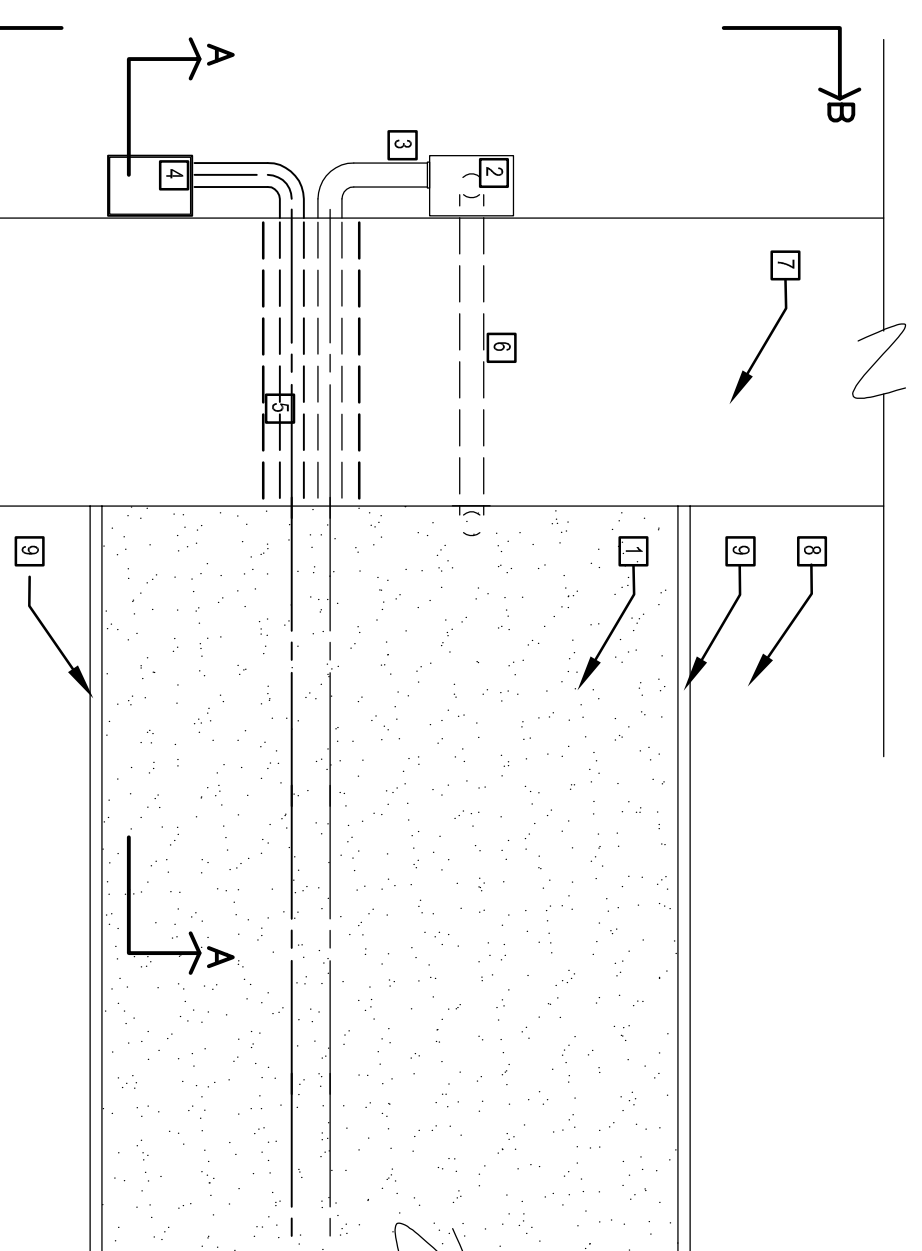
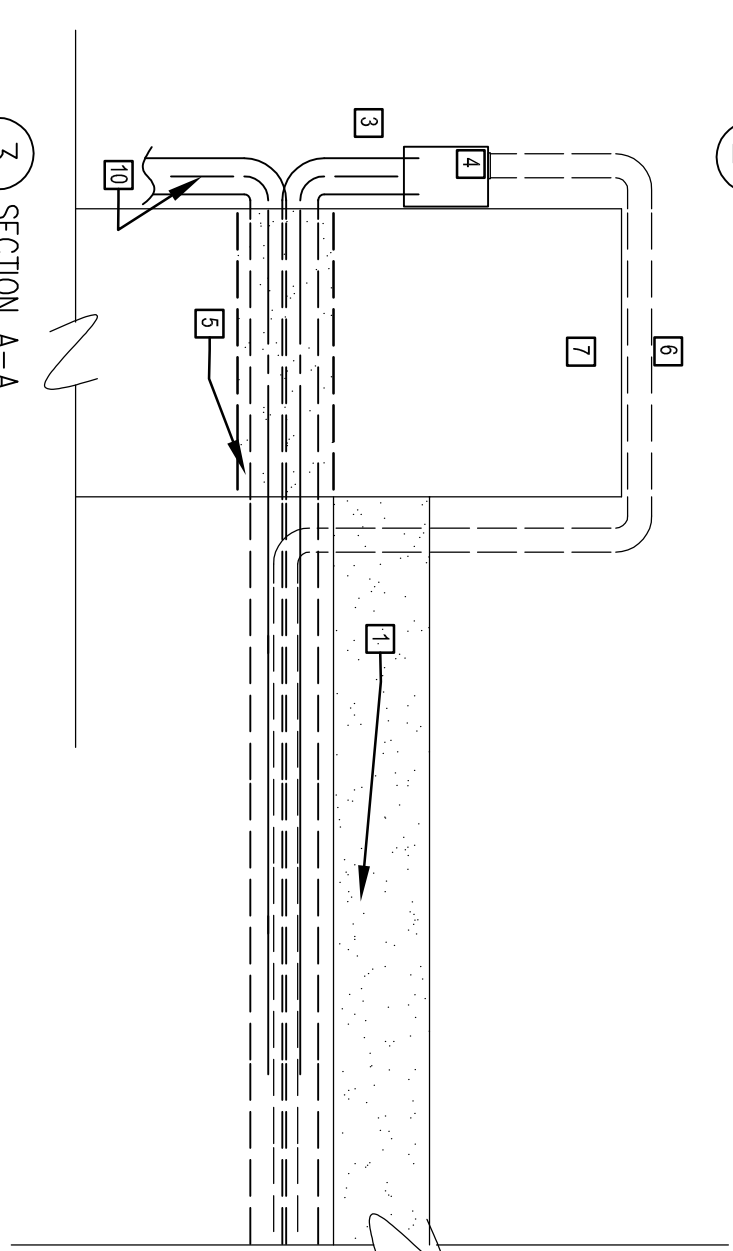


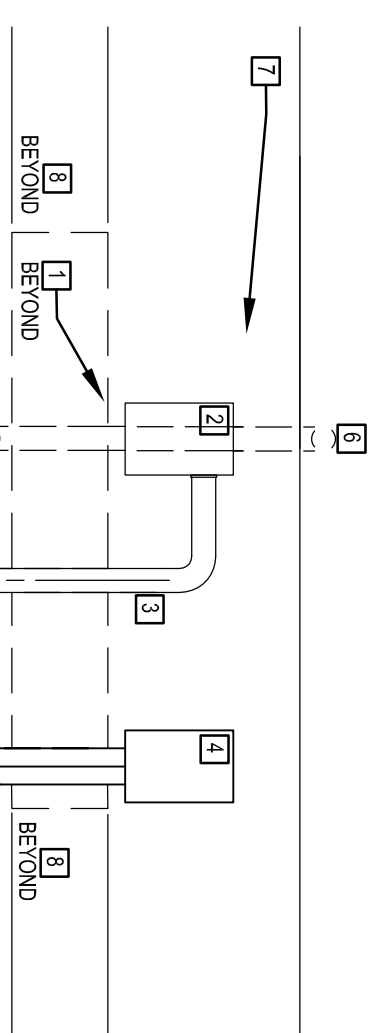
① CONDUIT SCHEMATIC DETAIL  
SCALE: 3/4"=1'-0"



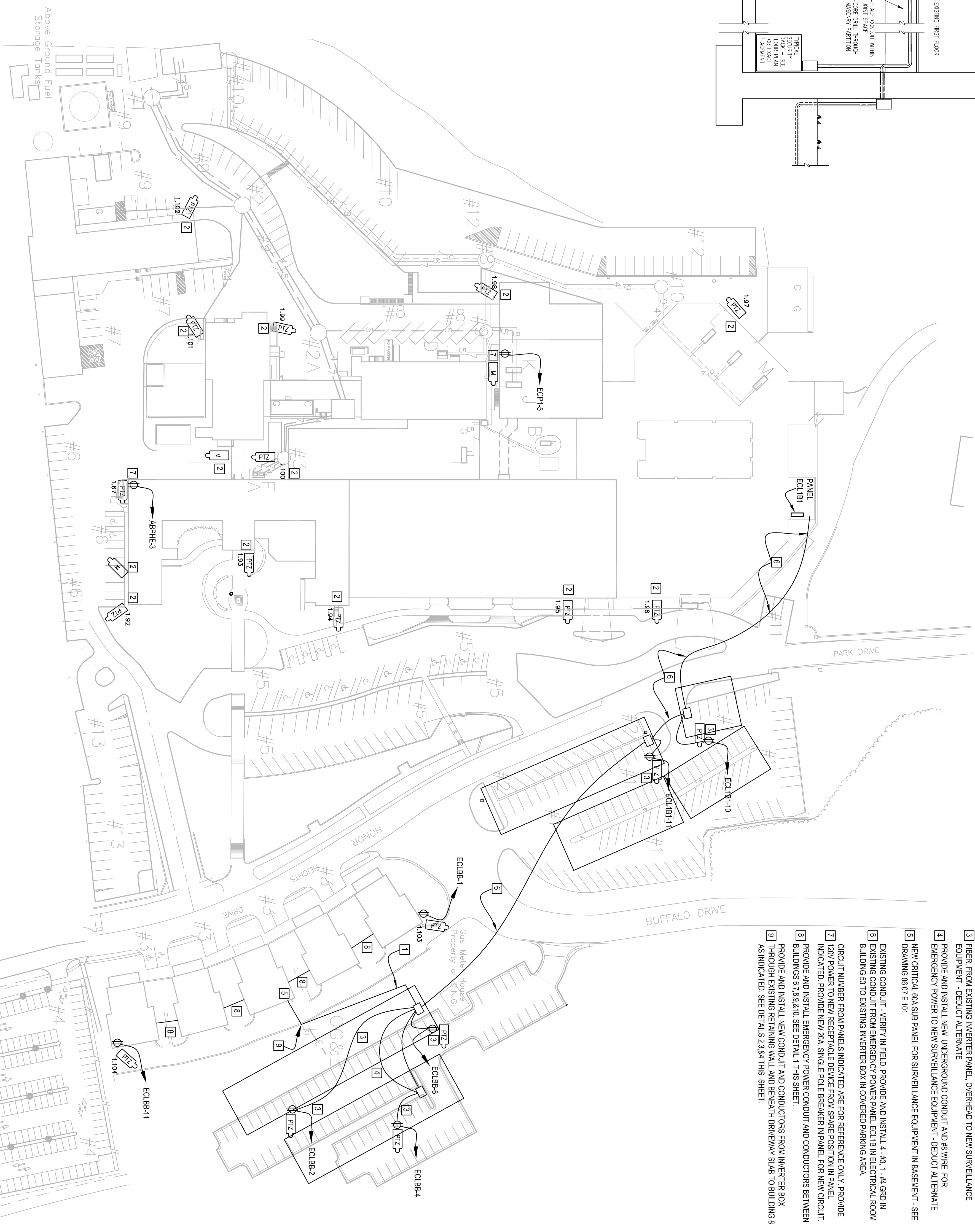
② PLAN



3 SECTION A-A



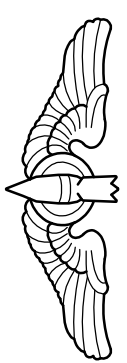
4 ELEVATION B-B  
CONDUIT DETAILS  
SCALE: 1 1/2"=1'-0"



**SITE PLAN**  
SCALE: 1" = 50'-0"

[illegible]

CONSULTANTS:



ARCHITECTS/ENGINEERS

Dept. of Veterans Affairs  
Jack C. Montgomery  
Medical Center  
1011 Honor Height Drive  
Muskogee, Oklahoma 74401

APPROVED: CHIEF VA POLICE
APPROVED:
APPROVED:
APPROVED:

APPROVEDPresident A.F.G.E. 2250
APPROVED
APPROVED
APPROVED

APPROVEDEnergy Engineer
APPROVEDSafety Manager
APPROVEDInfection Control Nurse
APPROVEDIndustrial Hygienist

APPROVEDMedical Center Director
APPROVEDAssociate Director
APPROVEDChief of Staff
APPROVEDChief of Engineering Services

Drawing Title:  
**ELECTRICAL SITE  
PLAN**

Scale:  
**AS SHOWN**

Building Number: **00**

<b>Project Title:</b>		
<b>REPLACE SURVEILLANCE SYSTEM</b>		
<b>Approved:</b>	<b>Checked By:</b>	<b>Drawn By:</b>
TWC - JCM/VAMC	CKE	WMW
<b>Location:</b>		
Jack G. Montgomery VA Medical Center - Muskogee, OK		

Date: MM - DD - YY  
08 - 23 - 13

Project No.  
623.12.105

Drawing No.  
00 E001

Dwg. 06 of 122



### KEYED NOTES:

- 1 PROVIDE INSTALL 4 x 4, 1/4" MIN. IN 1/2" C. FROM EXISTING INTERFER BOX TO UNDERGROUND, UP EXISTING RETAINING WALL, AND BRUSH DRIVEWAY SLAB TO NEW PANEL EC203 IN BUILDING 8.
- 2 CONNECT NEW REPLACEMENT CABLES TO EXISTING POWER, TYPICAL.
- 3 PROVIDE AND INSTALL NEW CONDUIT AND WIRE FOR EMERGENCY POWER AND SIGNAL LIGHTS TO NEW PANEL, OVERHEAD TO NEW SIGNAL LIGHTS.
- 4 REMOVE AND INSTALL NEW UNDERGROUND CONDUIT AND WIRE FOR EMERGENCY POWER TO NEW SIGNAL LIGHTS EQUIPMENT - DETECT / ALTERNATE DRAWING 96 07 OF 101
- 5 NEW CIRCUIT FOR SURVEILLANCE EQUIPMENT IN BASEMENT - SEE DRAWING 96 07 OF 101
- 6 EXISTING CONDUIT - REMOVE IN FIELD. PROVIDE AND INSTALL 4 x 4, 1/4" MIN. IN 1/2" C. FROM EXISTING INTERFER BOX TO NEW SIGNAL LIGHTS EQUIPMENT ROOM.
- 7 BUILDING 53 TO EXISTING INTERFER BOX IN COVERED PARKING AREA.
- 8 CIRCUIT NUMBER FOR PANELS INDICATED ARE FOR REFERENCE ONLY. PROVIDE 120V POWER TO NEW RECEPTACLE DEVICE FROM SPARE POSITION IN PANEL. INDICATED PROVIDE NEW 240V SINGLE POLE BREAKER IN PANEL FOR NEW CIRCUIT. PROVIDE AND INSTALL EMERGENCY POWER CONDUIT AND CONDUCTORS FROM BUILDING 53 TO 83.03. SEE DETAIL 1. THIS SHEET.
- 9 BUILDING 53 TO 83.03. SEE DETAIL 1. THIS SHEET.
- 10 PROVIDE AND INSTALL NEW CONDUIT AND CONDUCTORS FROM INTERFER BOX AS THROUGH EXISTING RETAINING WALL, AND BRUSH DRIVEWAY SLAB TO BUILDING 53. THROUGH EXISTING DETAILS 2.34 AND 11. SHEET.