












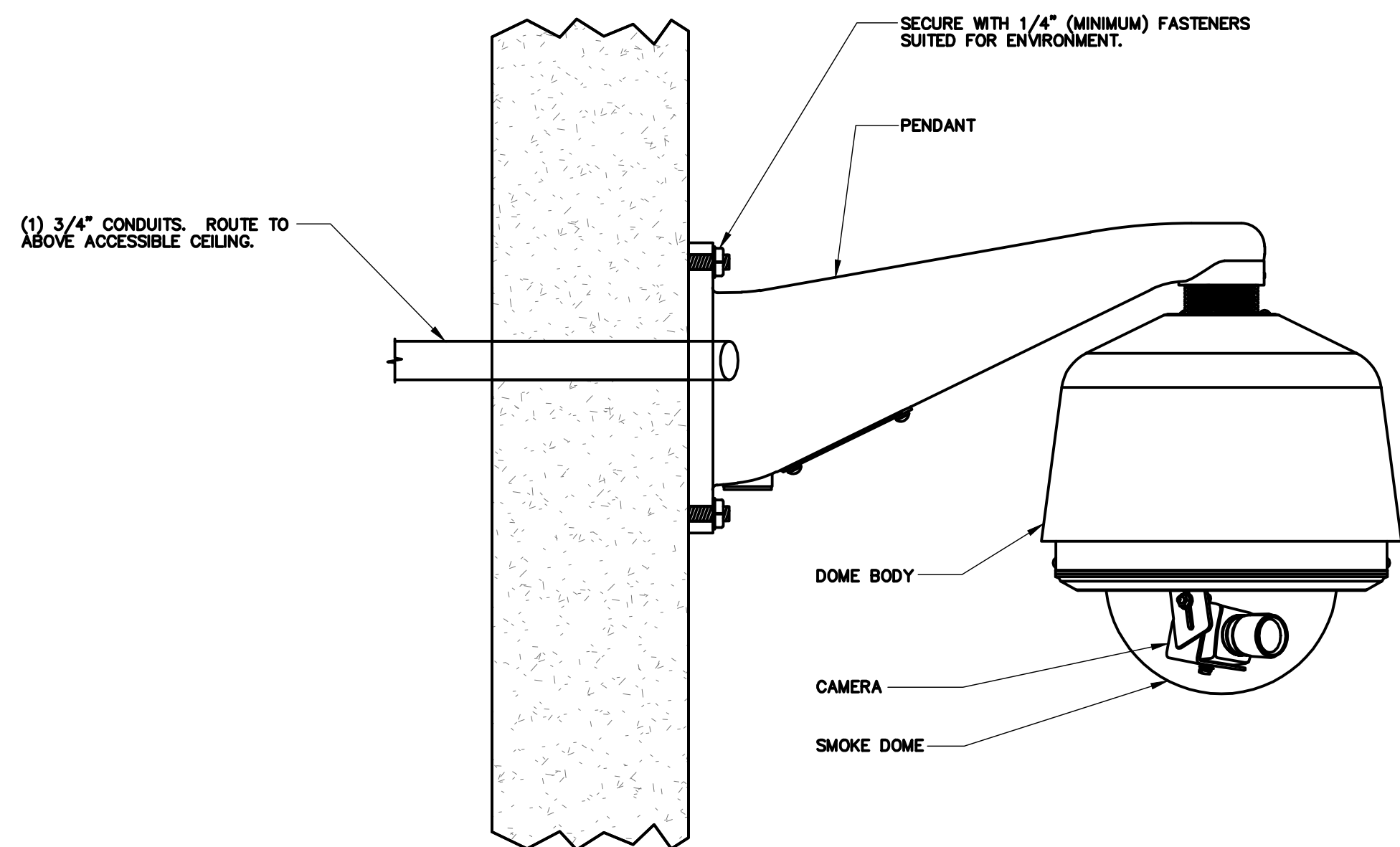


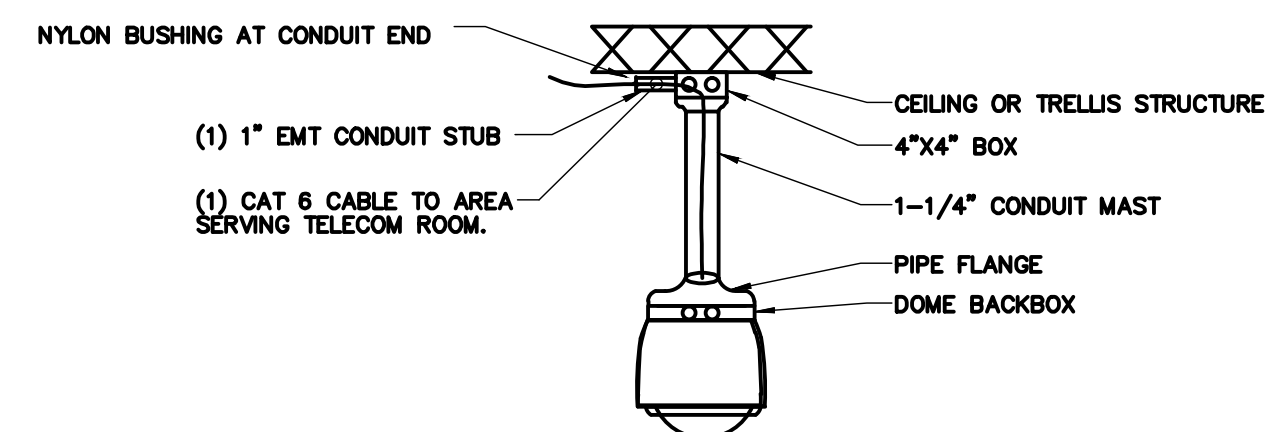
No.	Description	Date	CONSULTANTS:		ARCHITECTS/ENGINEERS:		  		APPROVED:		APPROVED: President A.F.G. 2250	APPROVED: Energy Engineer	APPROVED: Medical Center Director	Drawing Title: <div style="text-align: center; border: 1px solid black; padding: 5px;">SITE PLAN</div> Scale: <div style="text-align: center; border: 1px solid black; padding: 5px;">AS SHOWN</div> Building Number: <div style="text-align: center; border: 1px solid black; padding: 5px;">SITE</div>	Project Title: <div style="text-align: center; border: 1px solid black; padding: 5px;">REPLACE SURVEILLANCE SYSTEM</div> Approved: <div style="border: 1px solid black; padding: 2px;">TWC - JCMVAMC</div> Checked By: <div style="border: 1px solid black; padding: 2px;">DAVLAR</div> Drawn By: <div style="border: 1px solid black; padding: 2px;">KEIEVE</div>	Date: <div style="border: 1px solid black; padding: 2px;">08.23.13</div> Project No. <div style="border: 1px solid black; padding: 2px;">623.12.105</div> Drawing No. <div style="border: 1px solid black; padding: 2px; font-size: 1.5em;">00 TY001</div> Dwg. 26 of 122	<div style="writing-mode: vertical-rl; transform: rotate(180deg); text-align: center;">Department of Veterans Affairs</div> 
			  		APPROVED:		APPROVED:	APPROVED: Safety Manager	APPROVED: Associate Director								
			  		APPROVED:		APPROVED:	APPROVED: Infection Control Nurse	APPROVED: Chief of Staff								
			  		APPROVED:		APPROVED:	APPROVED: Industrial Hygienist	APPROVED: Chief of Engineering Service								



NO SCALE

NOTES:

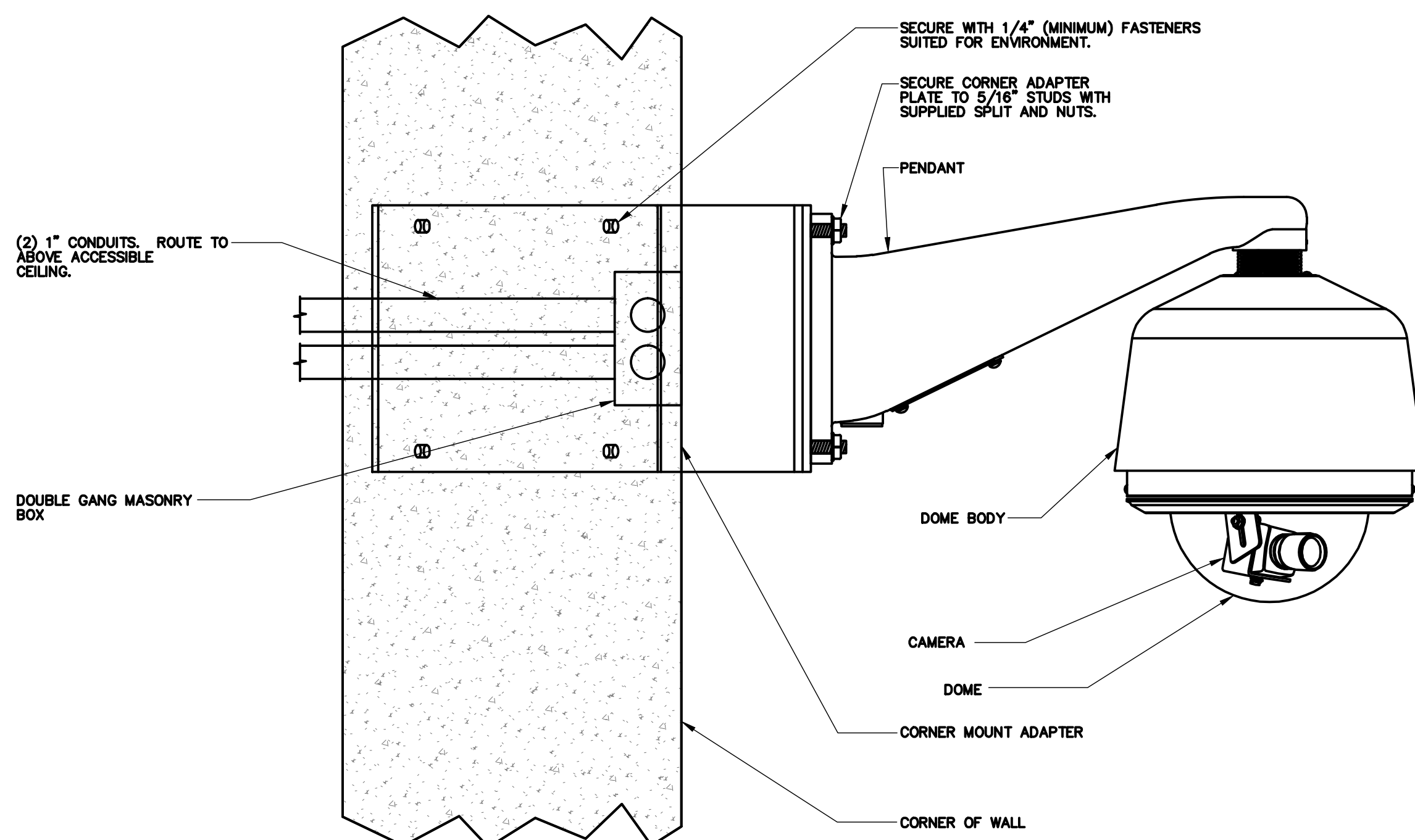
1. SECURE WALL MOUNT BASE PLATE TO CMU WITH MINIMUM 1/4" MASONRY FASTENERS. DO NOT ANCHOR TO FACE OF BRICK.
2. SEAL WALL MOUNT BASE PLATE TO FACE BRICK TO PREVENT WATER INFILTRATION.
3. REFER TO MANUFACTURER SPECIFICATIONS FOR INSTALLATION.



NO SCALE

NOTES:

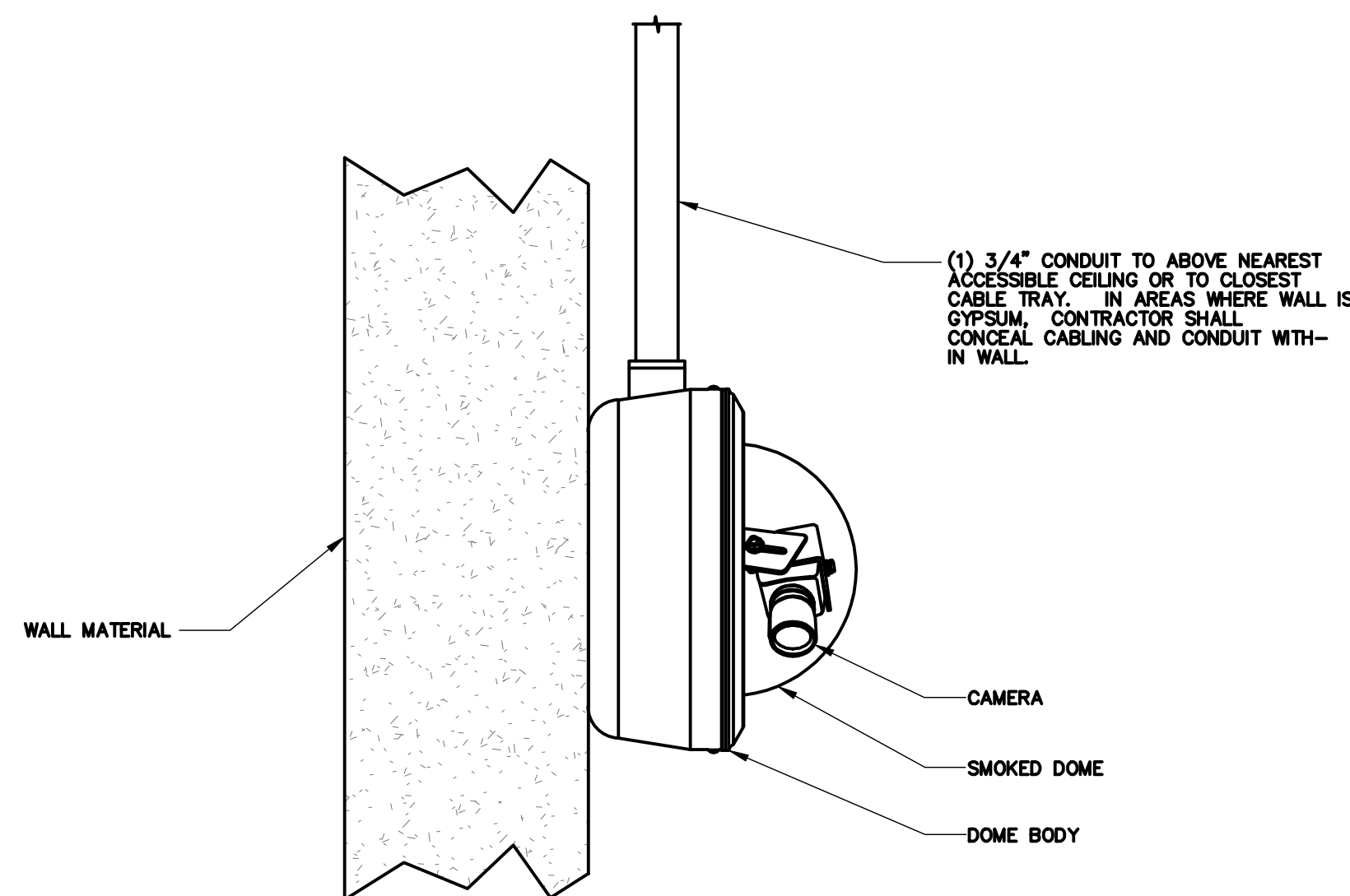
1. COORDINATE INSTALLATION WITH OWNER PRIOR INSTALLATION.
2. CONTRACTOR SHALL ENSURE SUPPORT OF ALL OPEN CABLE WITH APPROPRIATE MEANS.
3. THE DETAIL IS DIAGRAMMATIC, AND IS NOT INTENDED TO CONVEY ALL EQUIPMENT, CONDUCTORS, CONNECTIONS, AND QUANTITIES REQUIRED. CONTRACTOR SHALL PROVIDE EQUIPMENT AS NECESSARY TO SUPPORT ALL CAMERAS AS SHOWN ON PLANS.
4. PAINT RACEWAY TO MATCH FINISH OF EXISTING WALLS.
5. ALL SHIELDING SHALL BE TERMINATED WITH AN EMI PLUG FOR DIRECT CONNECTION TO DEVICE.
6. COORDINATE WITH OWNER FOR MAST LENGTH.



NO SCALE

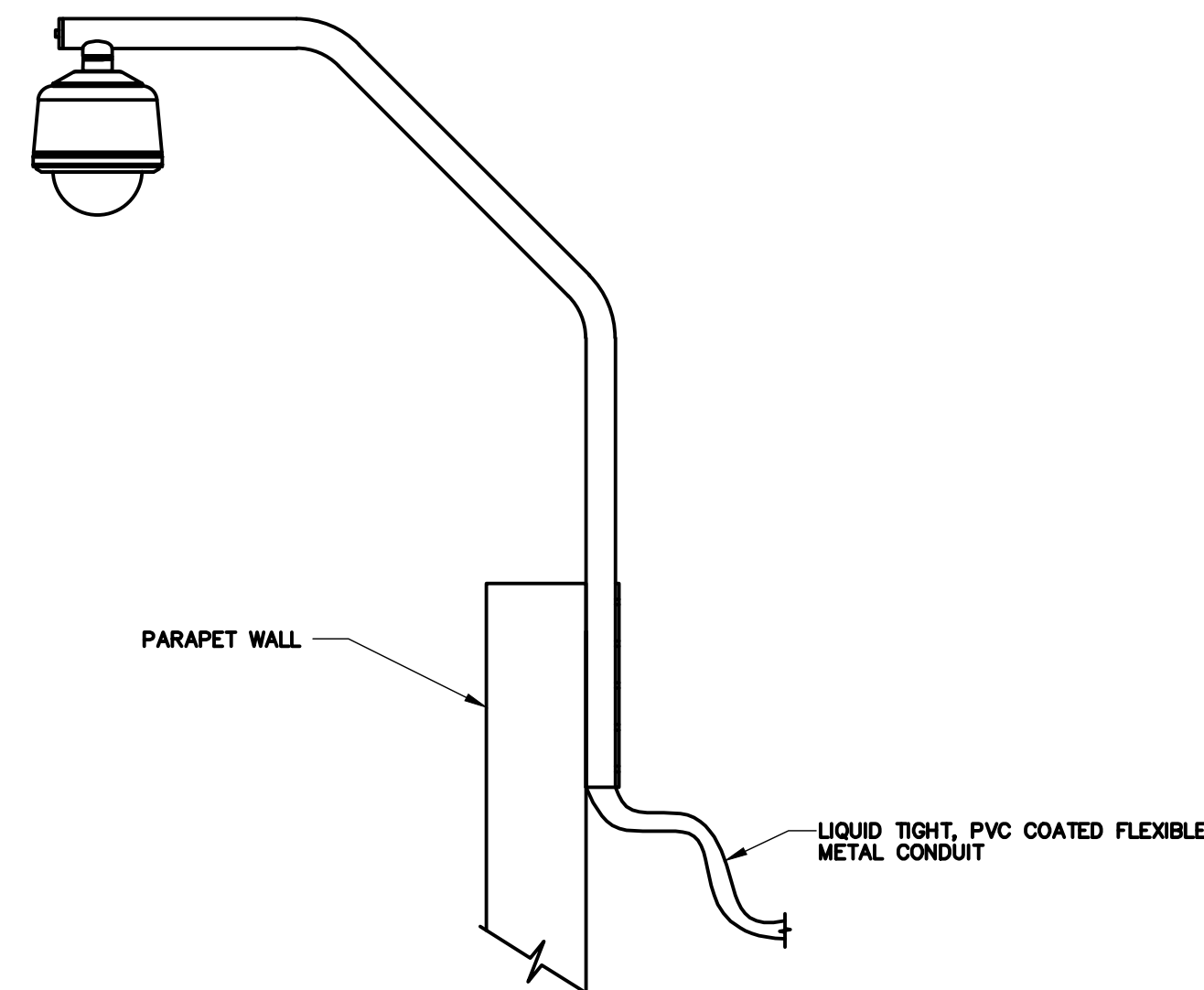
NOTES:

1. SECURE WALL MOUNT BASE PLATE TO CMU WITH MINIMUM 1/4" MASONRY FASTENERS. DO NOT ANCHOR TO FACE BRICK.
2. SEAL WALL MOUNT BASE PLATE TO FACE BRICK TO PREVENT WATER INFILTRATION.
3. REFER TO MANUFACTURER SPECIFICATIONS FOR INSTALLATION INFORMATION.



NOTES:

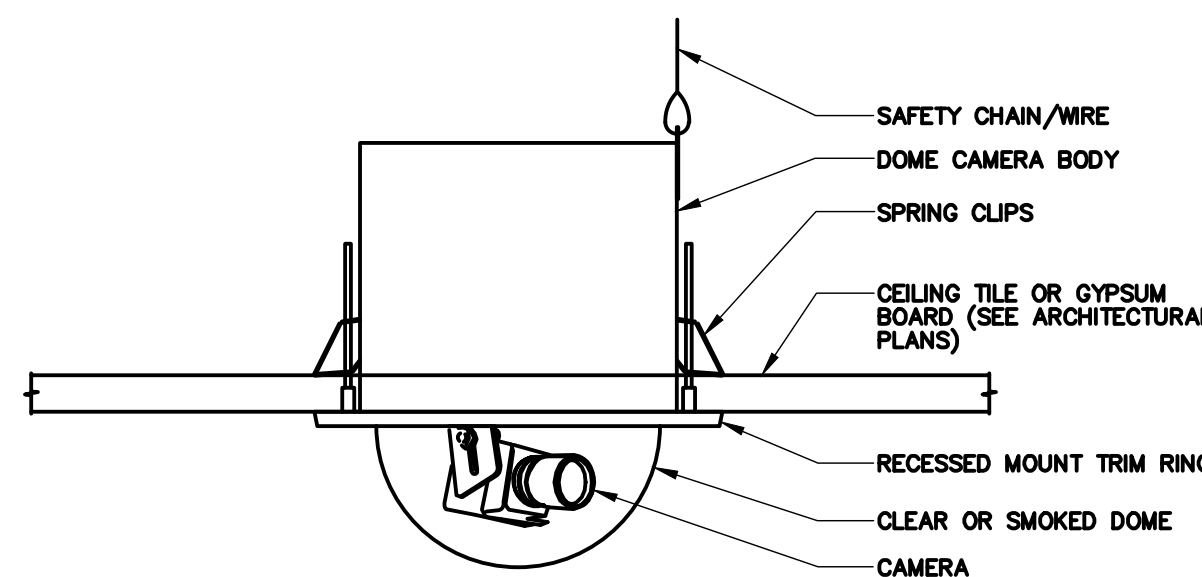
1. COORDINATE EXACT LOCATION OF CAMERA ON SITE WITH WORK. BY OTHER TRADES TO ENSURE DESIRED VIEWING AREA AND SERVICE ACCESS AFTER COMPLETION OF PROJECT AND TO MINIMIZE DAMAGE TO EXISTING DAMAGE TO INSTALLED CAMERA OR ASSOCIATED CABLES.
2. CONDUIT SHALL STUB TO NEAREST ACCESSIBLE CEILING AND TERMINATE ORIENTED HORIZONTALLY AT THE HEIGHT OF THE ASSOCIATED CABLE TRAY OR J-HOOK ROUTE. CONDUIT RUN SHALL NOT BE USED AS A TRAY FOR ANY OTHER CABLES. CONDUIT SHALL BE SECURED TO WALLS BETWEEN JUNCTION BOX AND END OF CONDUIT. WHERE CONDUIT STUBS THROUGH A WALL IN TO A CORRIDOR OR TERMINATES AT A RESCATED J-HOOK RACK, THE CONDUIT SHOULD NOT EXTEND MORE THAN 1/2 INCHES IN TO THE CORRIDOR. WHERE CONDUIT STUBS TO AN ASSOCIATED CABLE TRAY, CONDUIT SHALL EXTEND TO A SERVICE TRAY. ALL CONDUITS MUST BE FITTED WITH A NYLON BUSHING ON EACH END OF THE CONDUIT.
3. INSTALLING CONTRACTOR SHALL FURNISH AND INSTALL FIRESTOP MATERIALS FOR CAMERA ROUGH-INS PER PROJECT REQUIREMENTS. REFER TO SPECIFICATIONS FOR FIRESTOP REQUIREMENTS.
4. PROVIDE TO CLOSED CIRCUIT (CCTV) INDIVIDUAL CAMERA REQUIREMENTS SCHEDULE FOR MOUNTING



NO SCALE

NOTES:

1. SECURE WALL MOUNT BASE PLATE TO PARAPET WALL WITH MINIMUM 1/4" MASONRY FASTENERS. COORDINATE WITH OWNER FOR APPROVED MOUNTING LOCATION (E.G. BRICK, BLOCK, ETC.)
2. SEAL WALL MOUNT BASE PLATE TO PREVENT WATER INFILTRATION.
3. CONTRACTOR SHALL ENSURE SUPPORT OF ALL OPEN CABLE WITH APPROPRIATE MEANS.
4. THE DETAIL IS DIAGRAMMATIC, AND IS NOT INTENDED TO CONVEY ALL EQUIPMENT, CONDUCTORS, CONNECTIONS, AND QUANTITIES REQUIRED. CONTRACTOR SHALL PROVIDE EQUIPMENT AND NECESSARY TO SUPPORT CAMERAS AS SHOWN ON PLANS.
5. CONTRACTOR SHALL PROVIDE ROOF PENETRATION NEAR CAMERA LOCATION. PROVIDE WEATHER HEAD PENETRATION OR APPROPRIATE PENETRATION TO SUPPORT CCTV CABLEING. COORDINATE FINAL LOCATION WITH OWNER PRIOR TO INSTALLATION.
6. CONTRACTOR SHALL PROVIDE ALL LABOR AND MATERIAL TO PROPERLY SEAL ROOF PENETRATION AND ANCHOR POINTS TO PREVENT WATER INTRUSION.

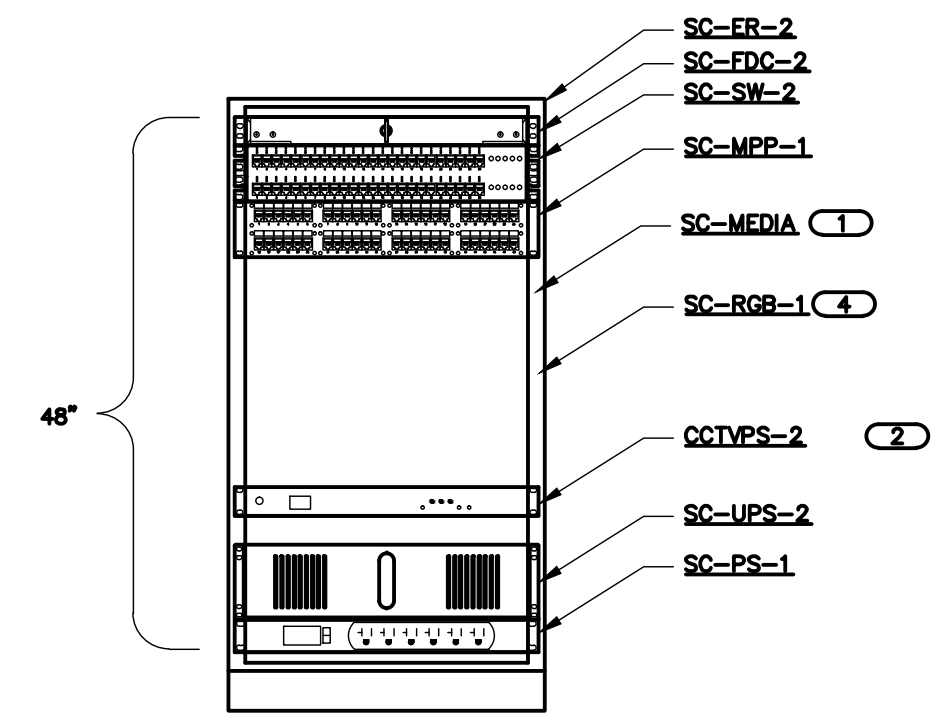


NO SCALE

NOTES:

1. COORDINATE INSTALLATION WITH CEILING INSTALLATION.
2. REFER TO MANUFACTURER SPECIFICATIONS FOR INSTALLATION

VA FORM 08-6231 PRINTED ON: August 20, 2013 ORIGINAL SIZE OF SHEET IS 30" X 42"



2 RACK ELEVATION - 48 PORT SWITCH

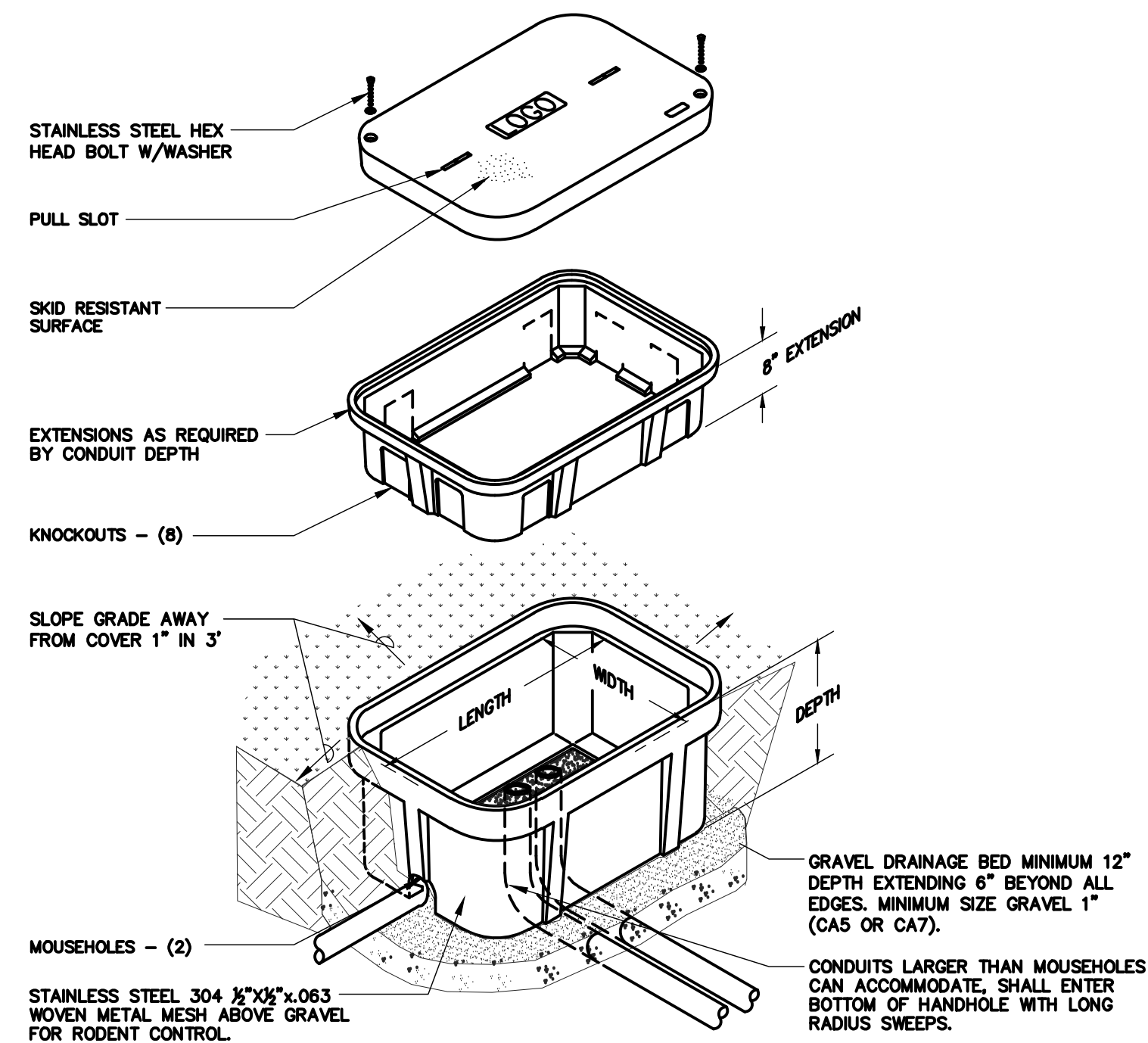
NO SCALE

NOTES:

1. COORDINATE MOUNTING LOCATIONS WITH OWNER.
2. REFER TO 2/00 TY401 FOR CONNECTIVITY DIAGRAM.
3. REFER TO 00 TY600 FOR TECHNOLOGY EQUIPMENT SCHEDULE.
4. RACK SHALL HAVE TWO DOOR POSITION SWITCHES; ONE FOR THE FRONT AND ONE FOR THE WALL SIDE. SWITCHES SHALL BE PLUNGER OR ROLLER, THEY SHALL NOT BE MAGNETIC.
5. NETWORK VIDEO RECORDER MAY BE PRESENT IN THE RACK.

KEYNOTES:

- 1 MEDIA CONVERTERS ARE ONLY PRESENT WHEN AN EXTERIOR CAMERA IS TERMINATED AT THIS RACK.
- 2 POWER SUPPLY IS ONLY PRESENT WHEN AN EXTERIOR CAMERA IS TERMINATED AT THIS RACK. ALTERNATIVELY, A NON-RACK MOUNTED POWER SUPPLY MAY BE USED, AC-CTVSP-1.
- 3 CONTRACTOR SHALL FURNISH AND INSTALL PLYWOOD BACKBOARD IF RACK IS WALL MOUNTED. RACK MAY BE FLOOR MOUNTED WITH USE OF OPTIONAL CONTRACTOR FURNISHED BASE.
- 4 RACK MOUNT GROUNDING BUS BAR/BOUNDED TO NEAREST TELECOMMUNICATIONS GROUNDING BUS BAR. ALL ACTIVE EQUIPMENT SHALL BE BONDED TO THE SC-RGB-1.



7 EXTERIOR HANDHOLE DETAIL SC-HH

NO SCALE

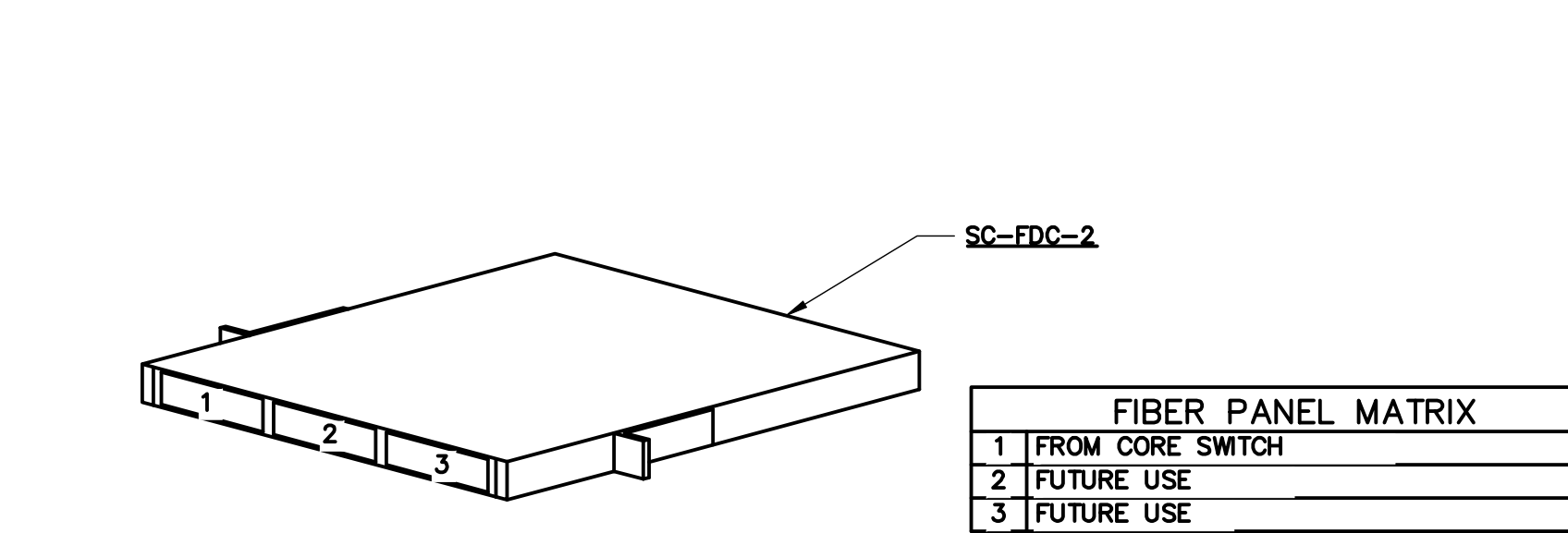
NOTES:

1. ALL DIMENSIONS ARE NOMINAL INSIDE CLEARANCES.
2. ALL SPLICES OR DEVICES IN HANDHOLE SHALL BE SUBMERSIBLE
3. SEAL ALL CONDUIT ENDS WITH DUCTSEAL

NO SCALE

NOTES:

1. ALL DIMENSIONS ARE NOMINAL INSIDE CLEARANCES.
2. ALL SPLICES OR DEVICES IN HANDHOLE SHALL BE SUBMERSIBLE
3. SEAL ALL CONDUIT ENDS WITH DUCTSEAL



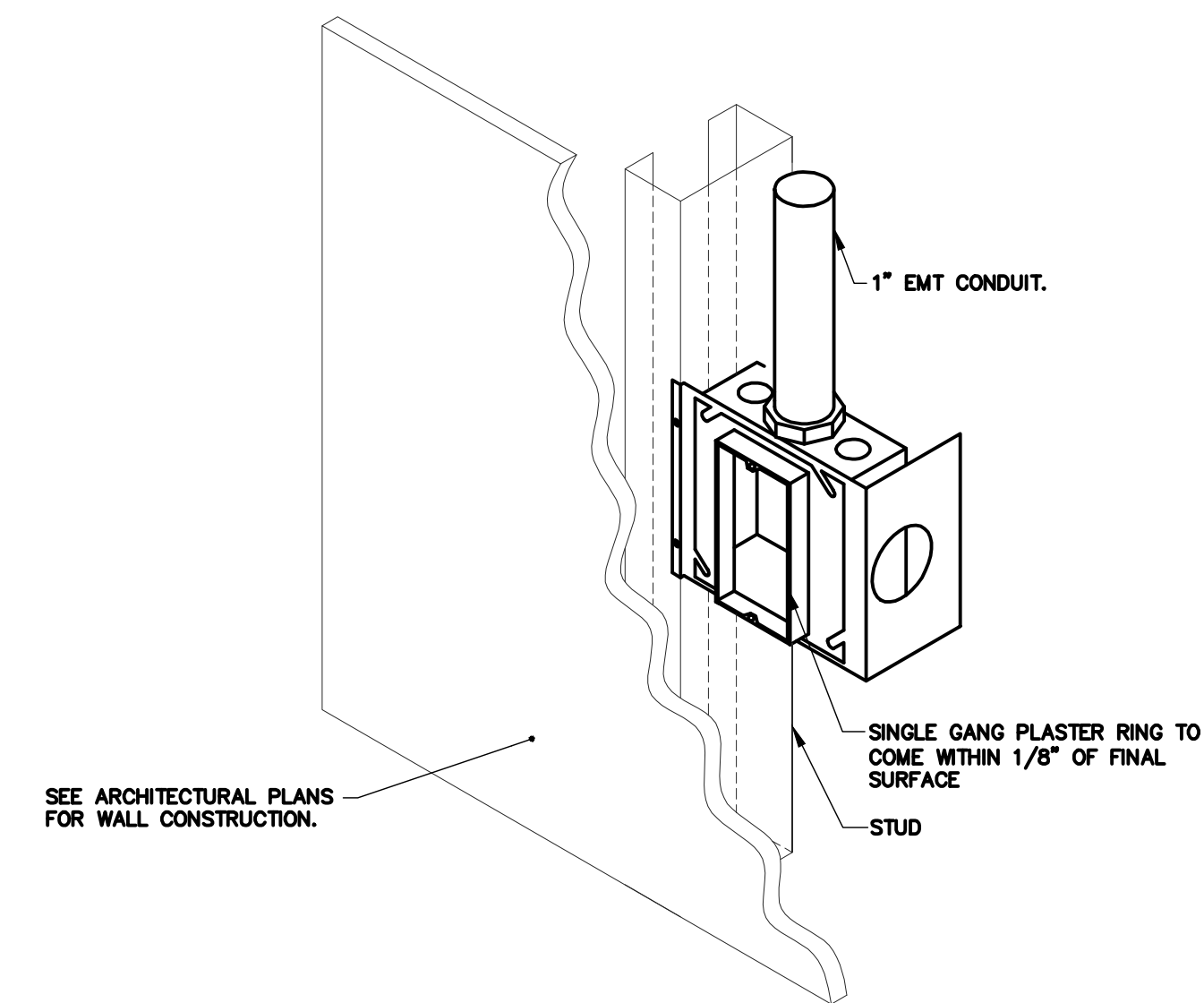
5 FIBER DISTRIBUTION CABINET -4RU

NO SCALE

NOTES:

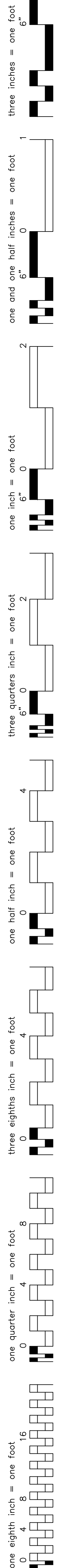
1. COORDINATE MOUNTING LOCATIONS WITH OWNER.
2. REFER TO 3/00 TY401 FOR CONNECTIVITY DIAGRAM.
3. REFER TO 00 TY600 FOR TECHNOLOGY EQUIPMENT SCHEDULE.

- ① MEDIA CONVERTERS ARE ONLY PRESENT WHEN AN EXTERIOR CAMERA IS TERMINATED AT THIS RACK.
- ② CONTRACTOR SHALL FURNISH NUMBER OF SERVER TO MEET SPECIFICATIONS. CONTRACTOR SHALL FURNISH CTV-1 WITH VASS SERVER.
- ③ SECOND RACK CONTRACTOR SHALL FURNISH AND INSTALL RACK, SC-MPP-1, SC-UPS-1, SC-PS-1 IN ADDITION TO REQUIRED SERVER(S) AND STORAGE.
- ④ RACK MOUNT GROUNDING BUS BAR BONDED TO NEAREST COMMUNICATIONS GROUNDING BUS BAR. ALL ACTIVE EQUIPMENT SHALL BE BONDED TO THE SC-RGB-1



9 TECHNOLOGY ROUGH-IN MOUNTING DETAIL

NO SCALE



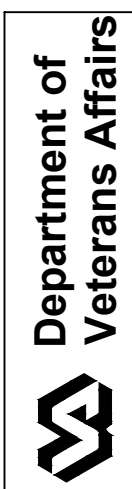
NO SCALE

NOTES:

1. THIS RISER IS DIAGRAMATIC AND MAY NOT SHOW ACTUAL ROUTING OR CLARIFICATION OF CONNECTION LOCATIONS AND CABLE TYPE. SEE PLANS FOR ADDITIONAL REQUIREMENTS. REFER TO 00TYS00, 501,502 AND 504
2. LEGEND:
CAT 6 OR ACCESS CONTROL CABLE _____
3. NETWORK SWITCHES AND CONTROL PANELS TO WHICH DEVICES ARE SHOWN AND NOT NECESSARILY THE ONLY POSSIBLE TERMINATION LOCATION. DUPLICATIONS MAY BE WITHIN CABLE DISTANCE LIMITATIONS OF MULTIPLE TRUNKS
4. REFER TO DRAWING 00T403 FOR FIBER BACKBONE CONNECTING THE V

- A
B
C
D
E
F

VA FORM 08-6231 PRINTED ON: August 20, 2013 ORIGINAL SIZE OF SHEET IS 30" X 42"





KEYNOTES:

- ① FOUR (4) VOICE GRADE CABLE PAIRS REQUIRED FOR NEW ZETRON CONSOLE, TO BE ROUTED TO 205B-22, TELEPHONE ROOM
- ② ROOM 1D-137, EXISTING ZETRON CONSOLE TO REMAIN.
- ③ ROOM 301-22,, LOCATION OF NEW, SECONDARY ZETRON CONSOLE.

CONSULTANTS:

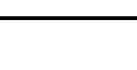
**K J
W W** **ENGINEERING
CONSULTANTS**

Experience you can build on

#15 SUNNEN DRIVE, SUITE 104
ST. LOUIS, MISSOURI 63145
314.645.1132
FAX: 314.645.1173
www.jew.com

**STRUCTURAL | MECHANICAL | ELECTRICAL
TECHNOLOGY | MEDICAL EQUIPMENT SOLUTIONS**

K2W, P.C.
Midwest State Certification of Authority #002309882



Dept. of Veterans Affairs
 Jack C. Montgomery
 Medical Center
 1011 Honor Height Drive
 Muskogee, Oklahoma 74401

Drawing Title: TECHNOLOGY RISER DIAGRAMS
Scale: AS SHOWN
Building Number: SITE

Date: 08.23.13

Project No. 623.12.105

Drawing No. 00 TY402

Dwg. 31 or 122

