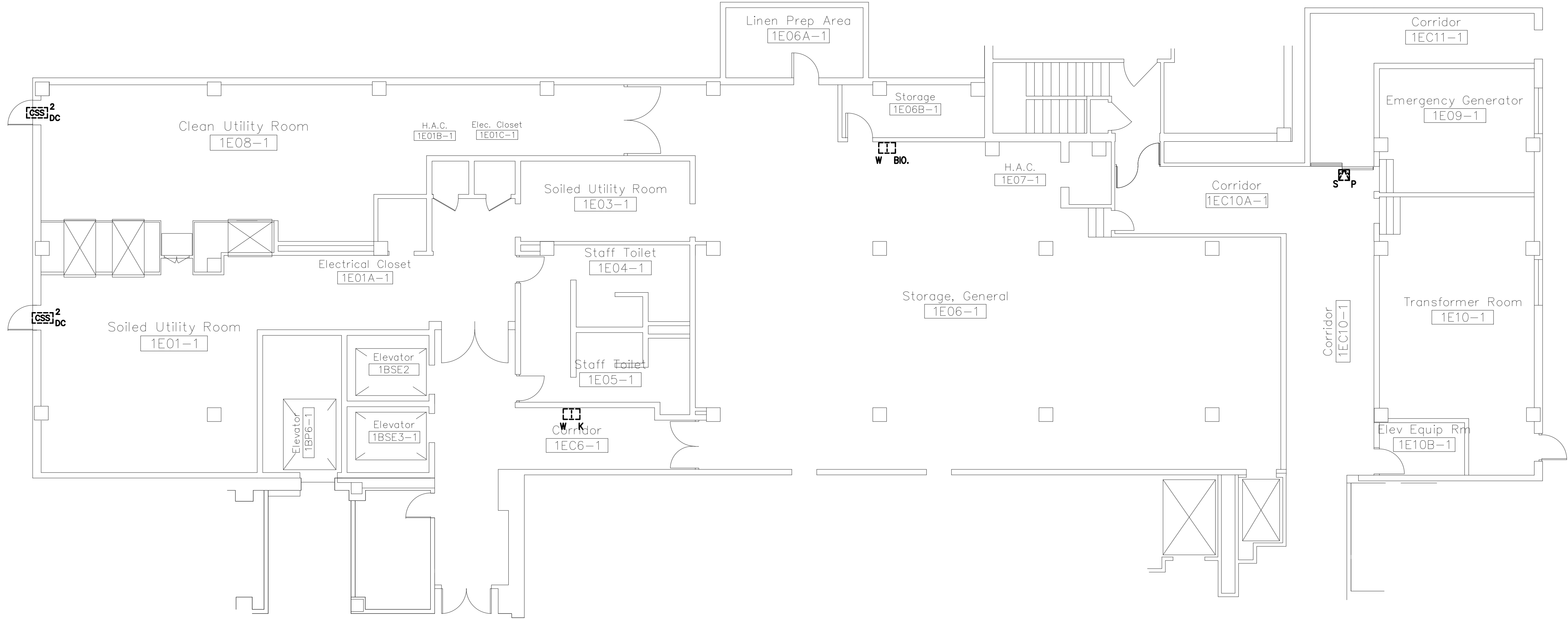


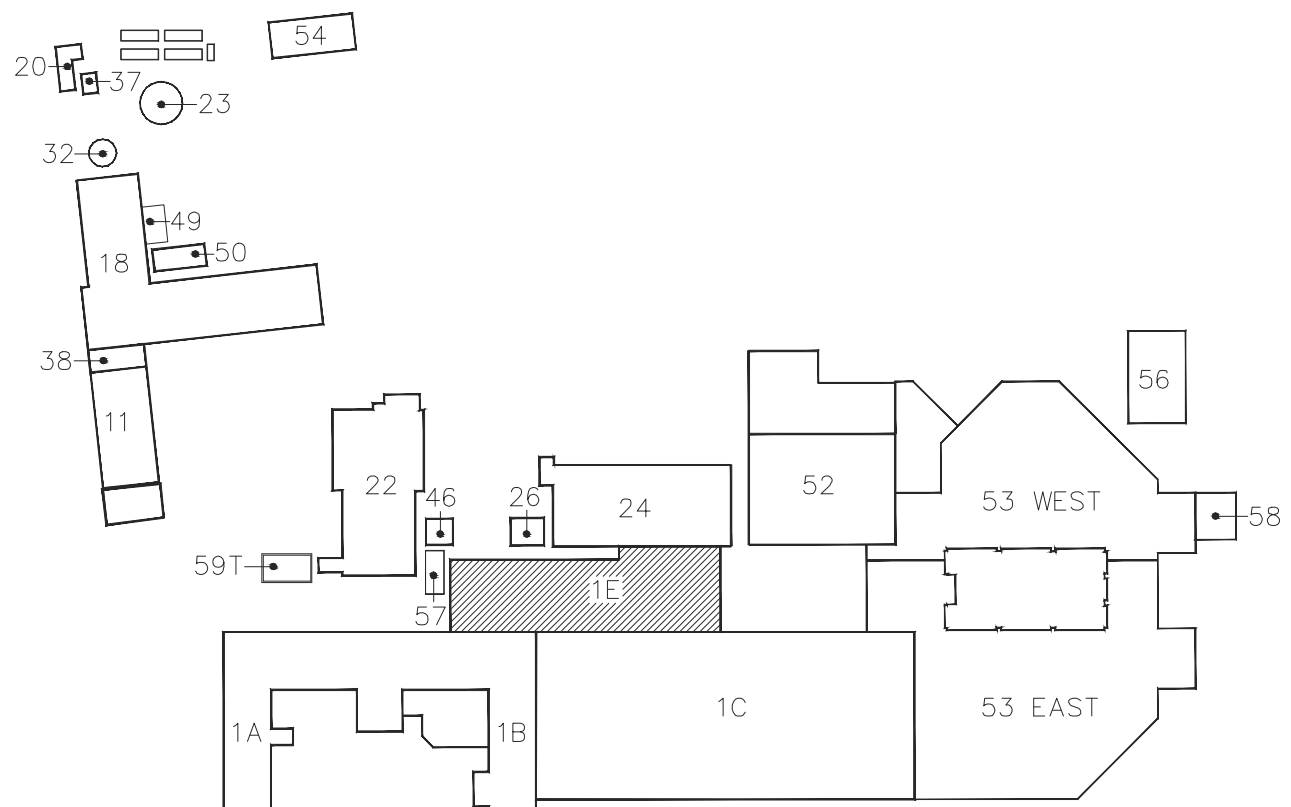
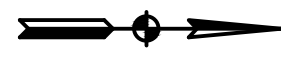
one eighth inch = one foot  
0 4 8 12 16  
one quarter inch = one foot  
0 4 8  
three eighths inch = one foot  
0 4 8  
one half inch = one foot  
0 4 8  
three quarters inch = one foot  
0 4 8  
one inch = one foot  
0 6 12  
one and one half inches = one foot  
0 6 12  
three inches = one foot  
0 6 12

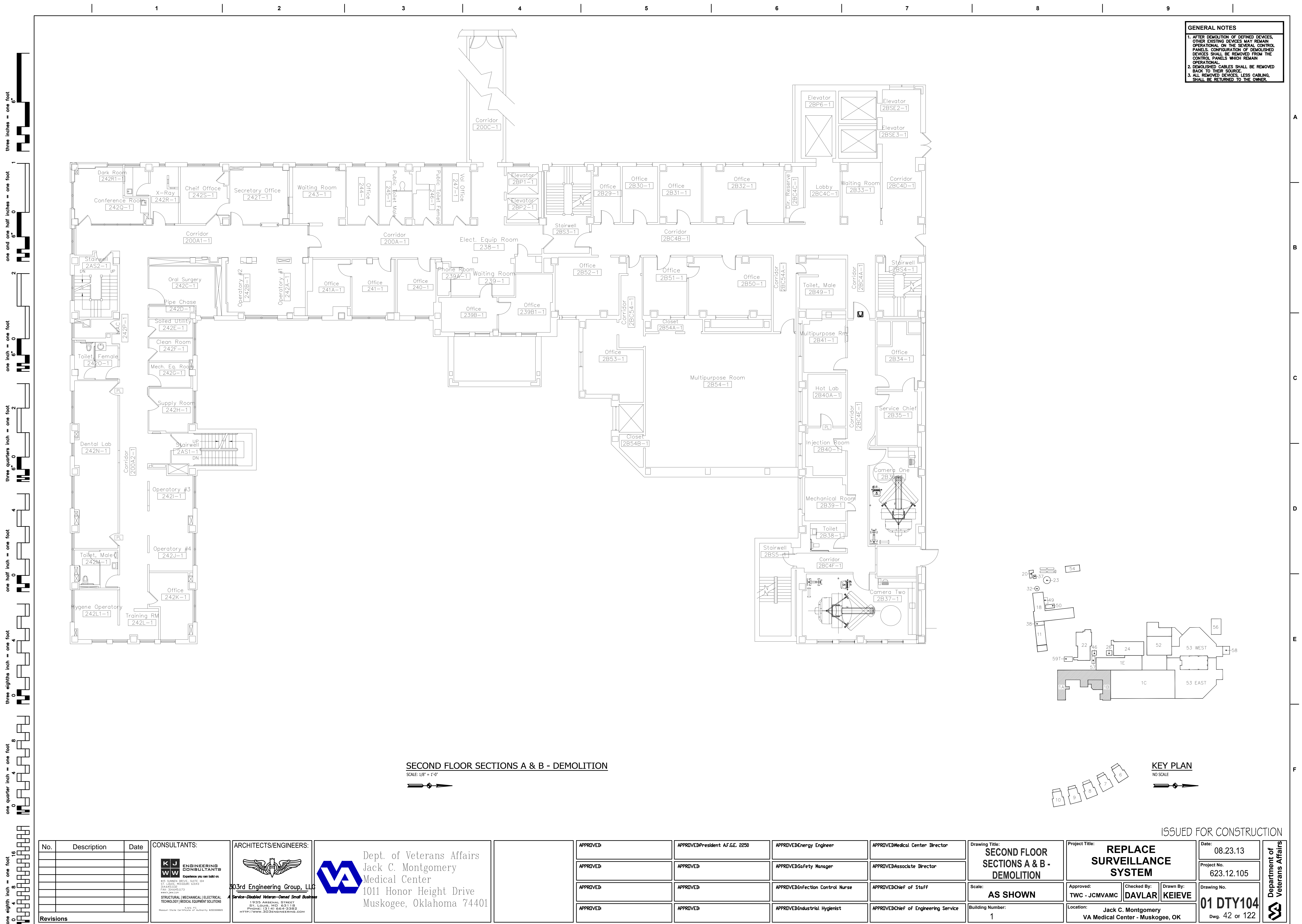
GENERAL NOTES  
1. AFTER DEMOLITION OF DEFINED DEVICES, OTHER EXISTING DEVICES MAY REMAIN OPERATIONAL. ON THE SEVERAL CONTROL PANELS, CONFIGURATION OF DEMOLISHED DEVICES SHALL BE REMOVED FROM THE CONTROL PANELS WHICH REMAIN OPERATIONAL.  
2. DEMOLISHED CABLES SHALL BE REMOVED BACK TO THEIR SOURCE.  
3. ALL REMOVED DEVICES, LESS CABLING, SHALL BE RETURNED TO THE OWNER.



FIRST FLOOR SECTION E - DEMOLITION

SCALE: 1/8" = 1'-0"

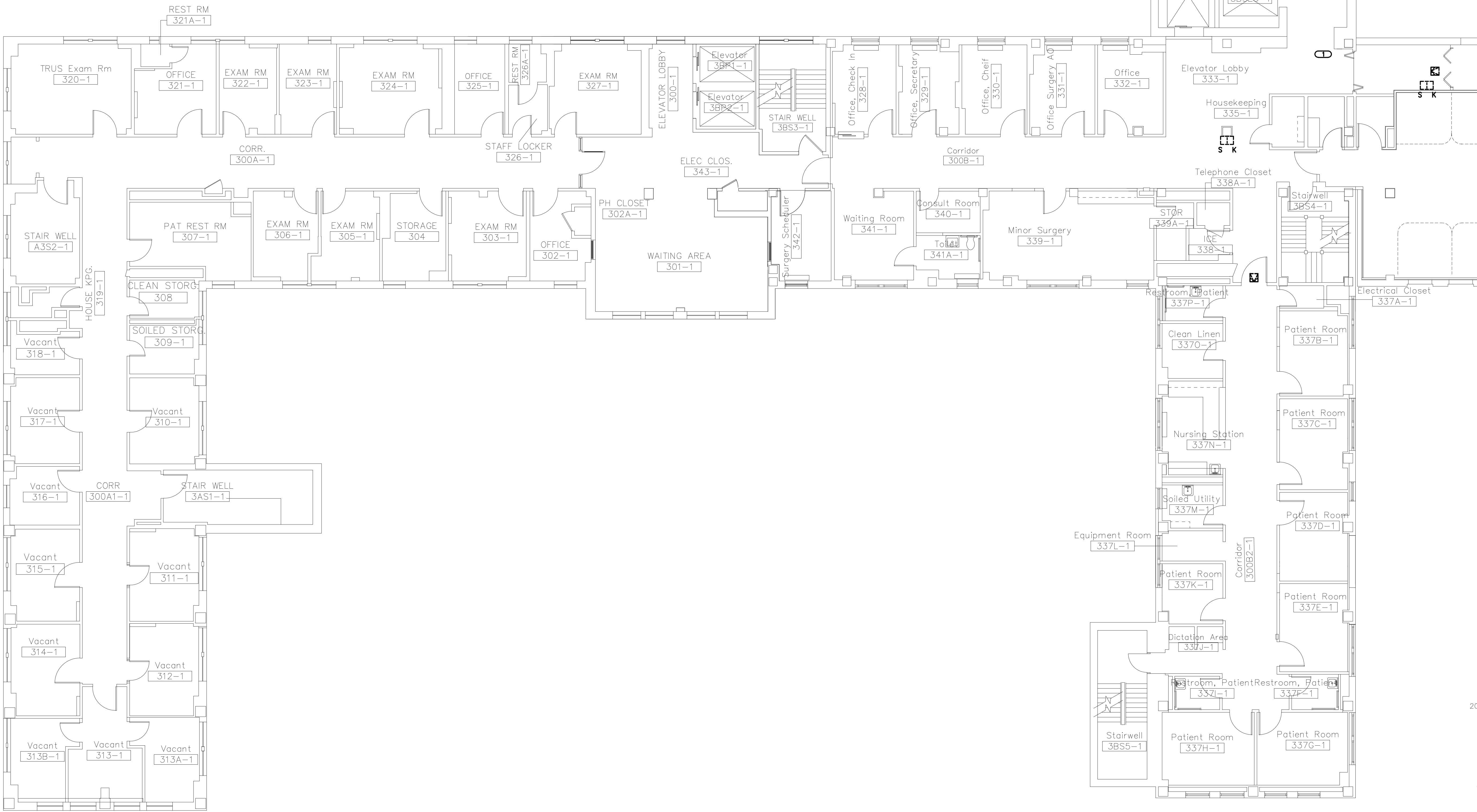




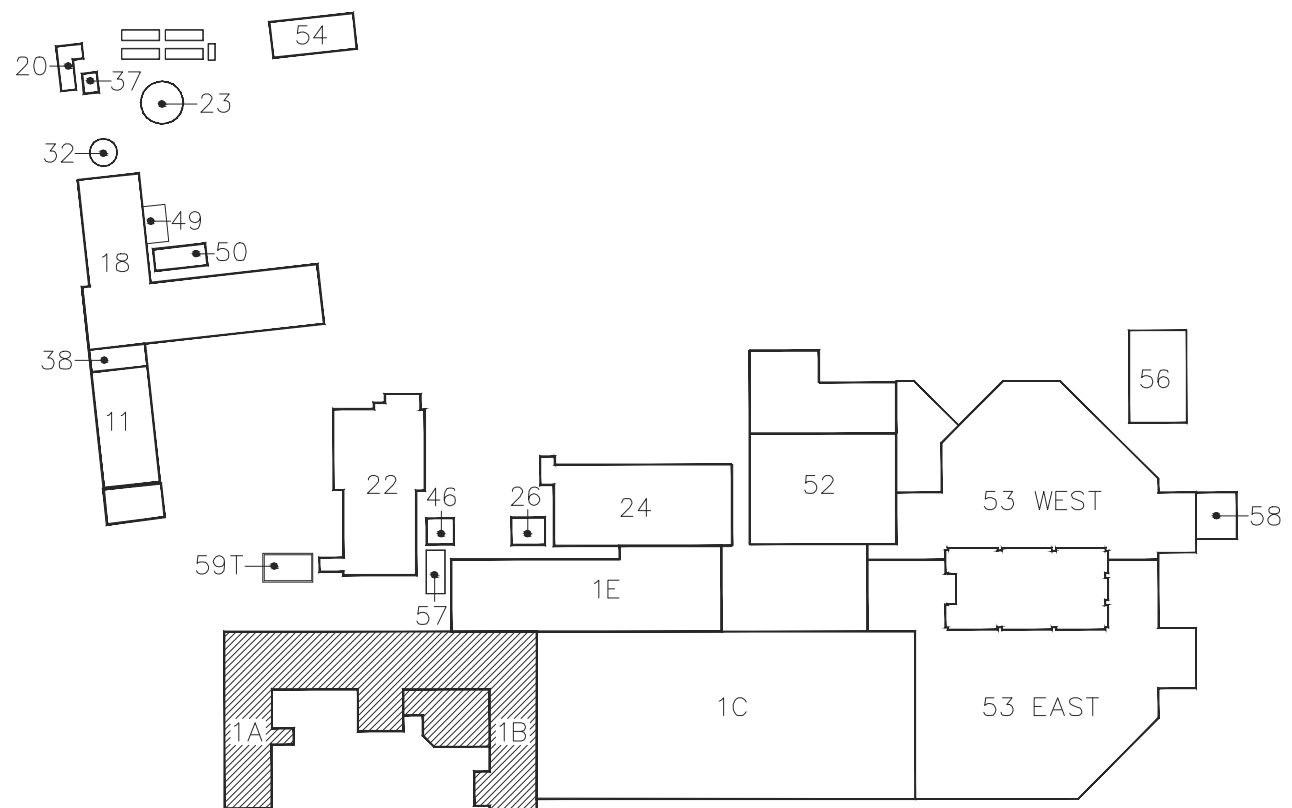




one eighth inch = one foot  
0 4 8 16  
one quarter inch = one foot  
0 4 8  
three eighths inch = one foot  
0 4 8  
one half inch = one foot  
0 4 8  
three quarters inch = one foot  
0 4 8  
one inch = one foot  
0 6 12  
one and one half inches = one foot  
0 6 12  
two inches = one foot  
0 6 12  
three inches = one foot  
0 6 12  
four inches = one foot  
0 6 12  
five inches = one foot  
0 6 12  
six inches = one foot  
0 6 12  
seven inches = one foot  
0 6 12  
eight inches = one foot  
0 6 12  
nine inches = one foot  
0 6 12  
ten inches = one foot  
0 6 12  
eleven inches = one foot  
0 6 12  
twelve inches = one foot  
0 6 12

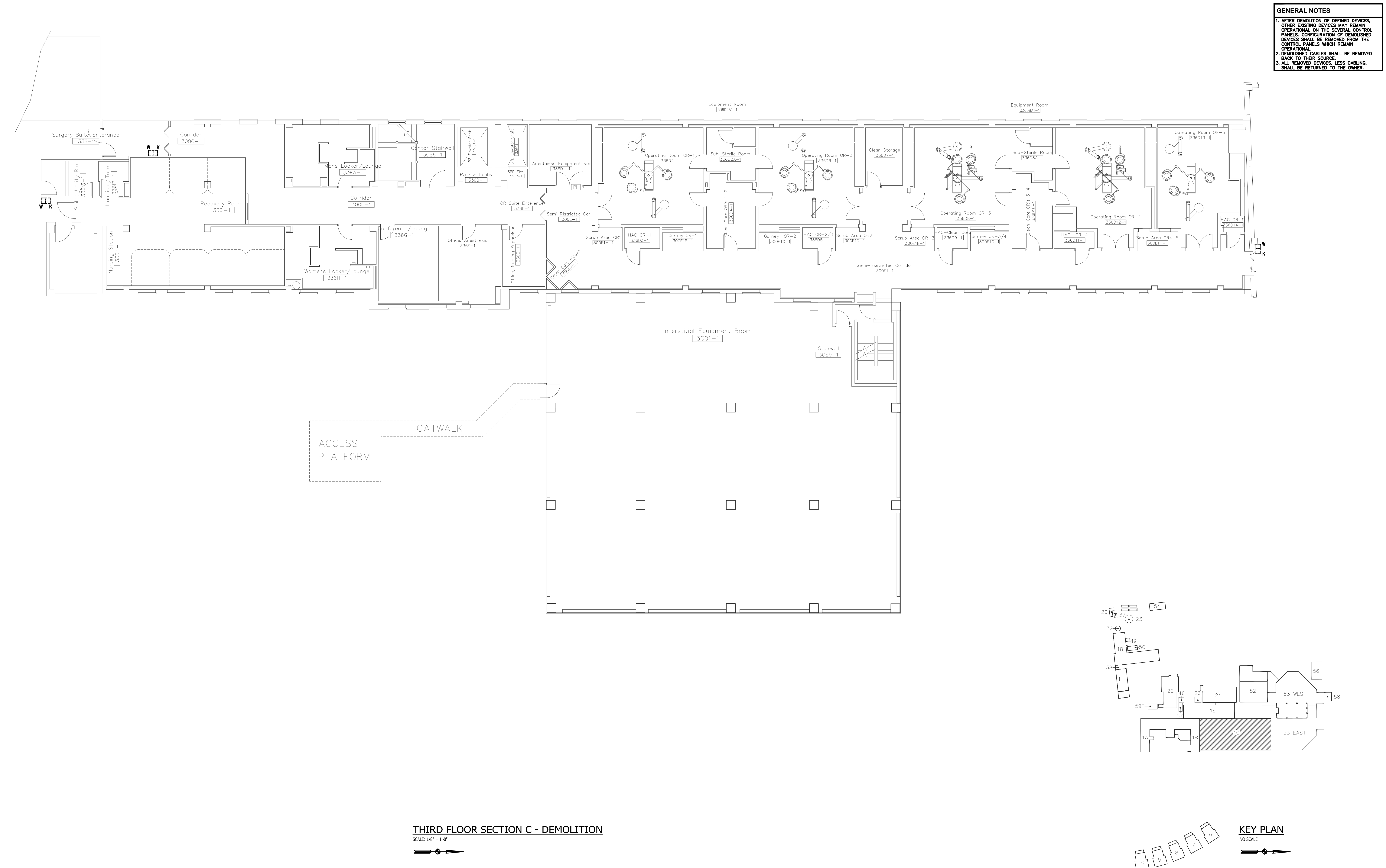


THIRD FLOOR SECTIONS A & B - DEMOLITION  
SCALE: 1/8" = 1'-0"







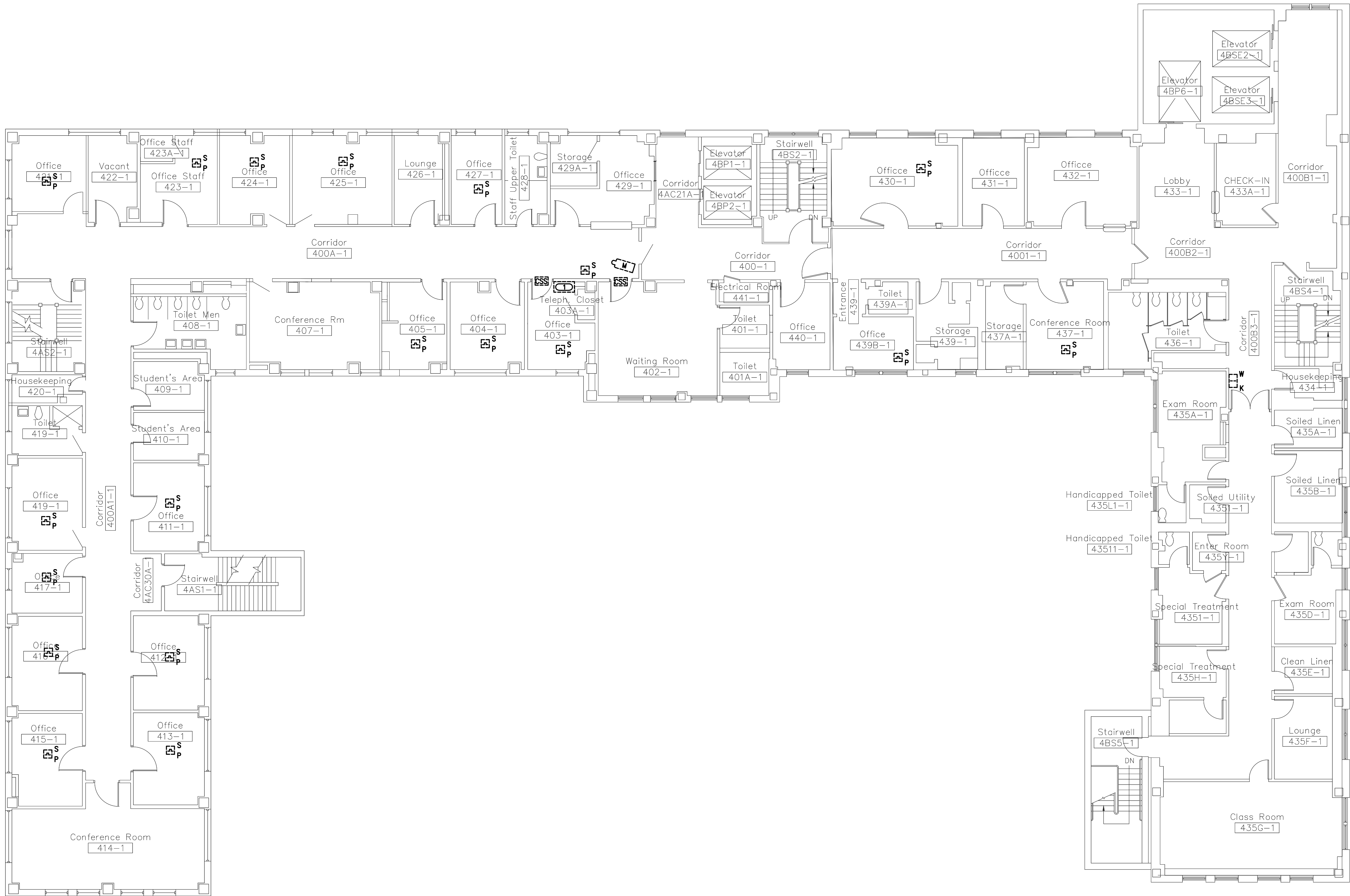
one eighth inch = one foot  
0 4 8 16  
one quarter inch = one foot  
0 4 8  
three eighths inch = one foot  
0 4 8  
one half inch = one foot  
0 4 8  
three quarters inch = one foot  
0 2 4  
one inch = one foot  
0 6 12  
one and one half inches = one foot  
0 6 12  
three inches = one foot  
0 6 12



THIRD FLOOR SECTION C - DEMOLITION  
SCALE: 1/8" = 1'-0"

No. Description Date			CONSULTANTS:		ARCHITECTS/ENGINEERS:		Dept. of Veterans Affairs Jack C. Montgomery Medical Center 1011 Honor Height Drive Muskogee, Oklahoma 74401		APPROVED		APPROVEDPresident AF.G.E. 2250		APPROVEDEnergy Engineer		APPROVEDMedical Center Director		Drawing Title: THIRD FLOOR SECTION C - DEMOLITION		Project Title: REPLACE SURVEILLANCE SYSTEM		Date: 08.23.13		Department of Veterans Affairs		
			 KJWW ENGINEERING CONSULTANTS Experience you can build on 4700 DUNN DRIVE, SUITE 104 ST. LOUIS, MISSOURI 63143 203-411-1136 FAX: 314-651-1173 WWW.KJWC.COM		 303rd Engineering Group, LLC Service-Disabled Veteran-Owned Small Business 1925 ARSENAL STREET ST. LOUIS, MO 63118 PHONE: (314) 564-3282 HTTP://WWW.303ENGINEERING.COM				APPROVED		APPROVED		APPROVEDSafety Manager		APPROVEDAssociate Director		Scale: AS SHOWN		Approved: TWC - JCMVAMC		Checked By: DAVLAR			Drawing No. 01 DTY107	
			STRUCTURAL   MECHANICAL   ELECTRICAL TECHNOLOGY   MEDICAL EQUIPMENT SOLUTIONS KJWW ST. MISSOURI STATE OFFICE OF AUTHORITY #20000000						APPROVED		APPROVED		APPROVEDInfection Control Nurse		APPROVEDChief of Staff		Building Number: 1		Location: Jack C. Montgomery VA Medical Center - Muskogee, OK		Drawing No. 01 DTY107				
Revisions									APPROVED		APPROVED		APPROVEDIndustrial Hygienist		APPROVEDChief of Engineering Service						Dwg. 45 of 122				

one eighth inch = one foot  
0 4 8 16  
one quarter inch = one foot  
0 4 8  
three eighths inch = one foot  
0 4 8  
one half inch = one foot  
0 4 8  
three quarters inch = one foot  
0 4 8  
one inch = one foot  
0 6 12  
two inches = one foot  
0 6 12  
three inches = one foot  
0 6 12  
one and one half inches = one foot  
0 6 12  
two and one half inches = one foot  
0 6 12  
three inches = one foot  
0 6 12



**GENERAL NOTES**

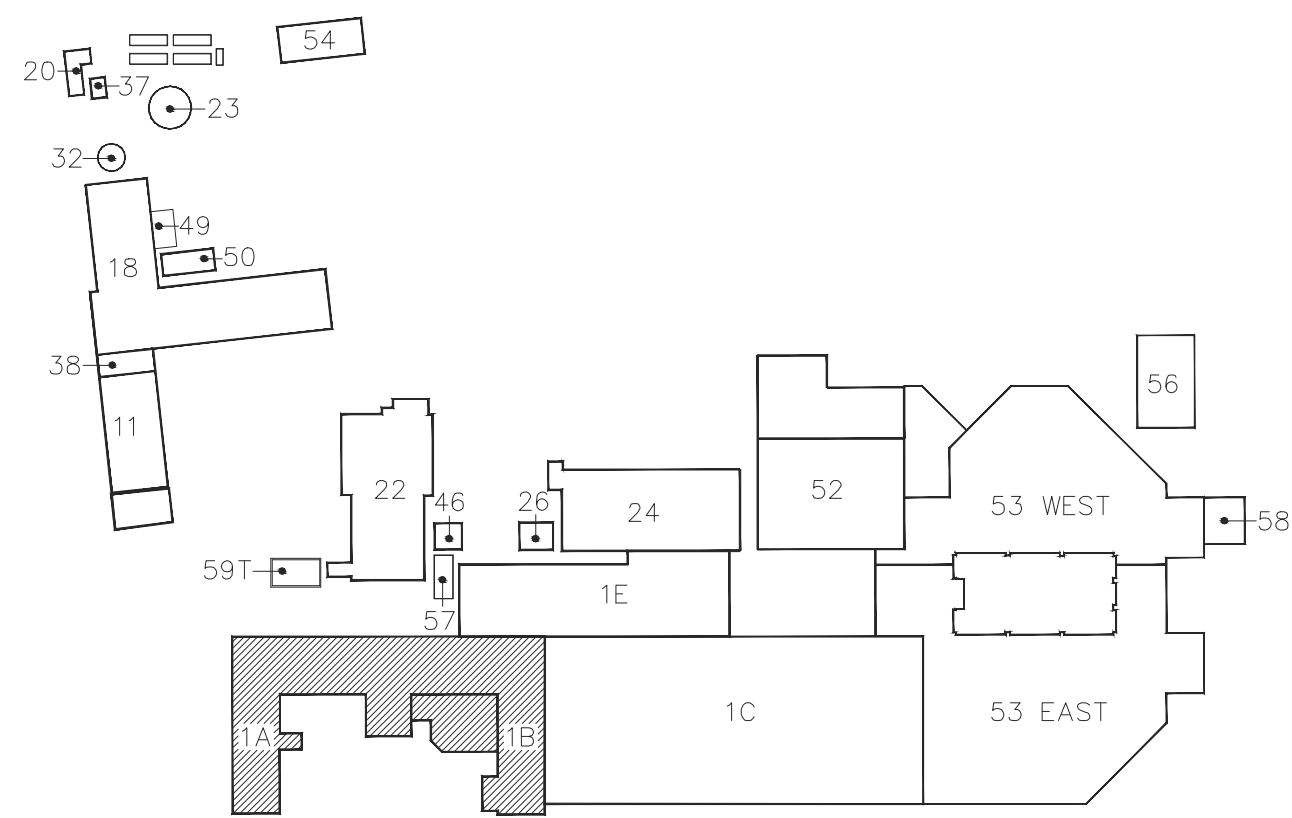
1. AFTER DEMOLITION OF DEFINED DEVICES, OTHER EXISTING DEVICES MAY REMAIN OPERATIONAL. ON THE SEVERAL CONTROL PANELS, CONFIGURATION OF DEMOLISHED DEVICES SHALL BE REMOVED FROM THE CONTROL PANELS WHICH REMAIN OPERATIONAL.

2. DEMOLISHED CABLES SHALL BE REMOVED BACK TO THEIR SOURCE.

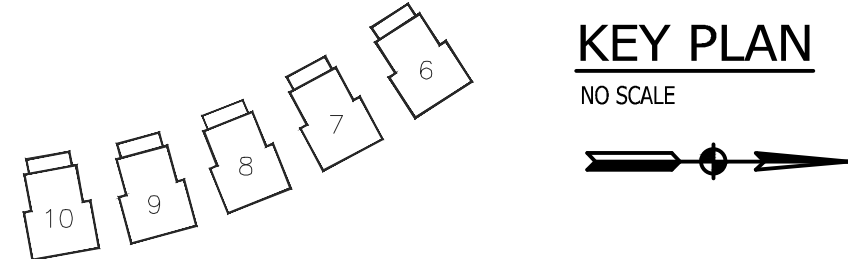
3. ALL REMOVED DEVICES, LESS CABLING, SHALL BE RETURNED TO THE OWNER.

**KEYNOTES**


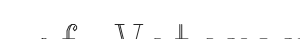

1. REMOVE GE/CADDEX PANEL BOX.



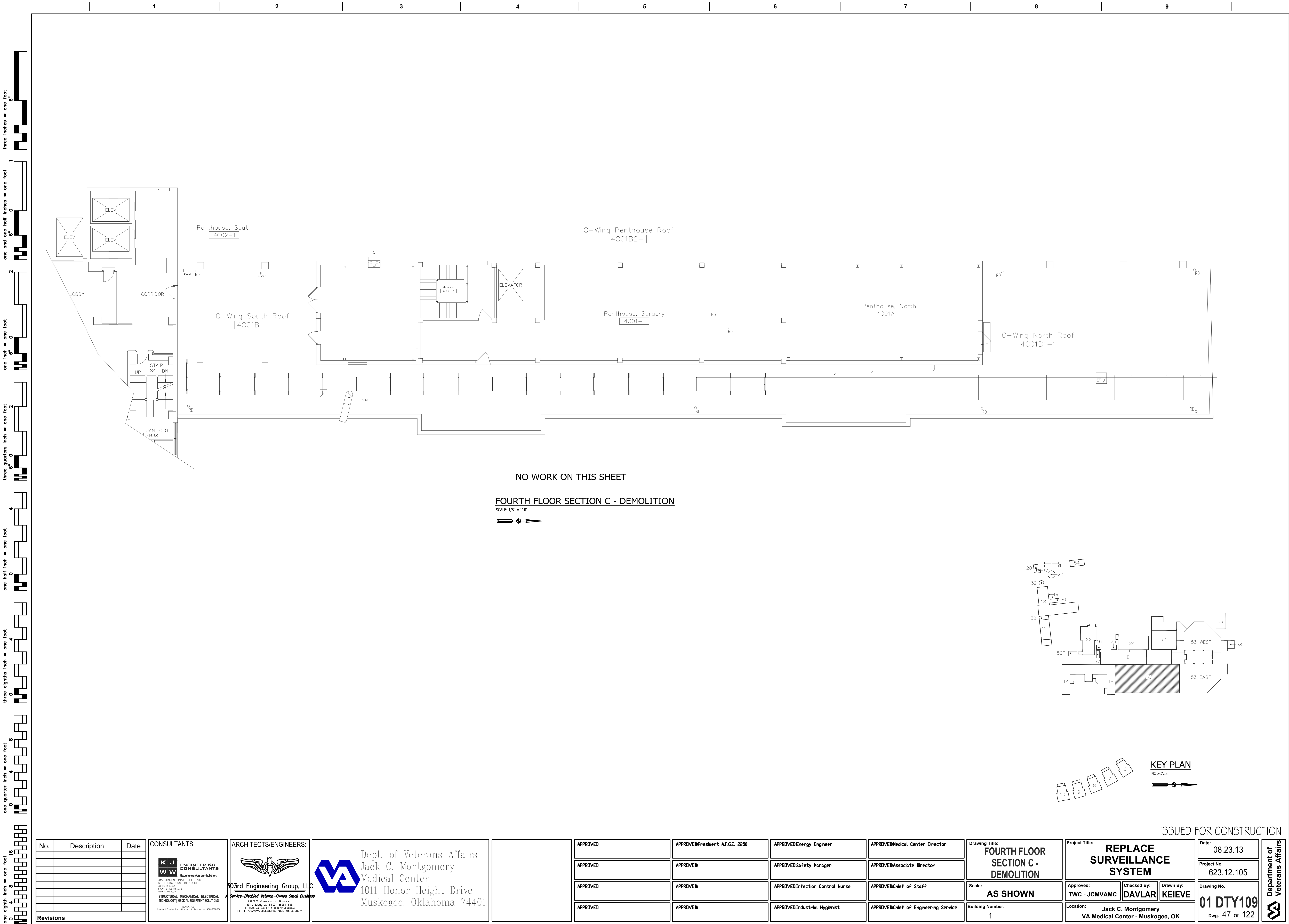
**FOURTH FLOOR SECTIONS A & B - DEMOLITION**  
SCALE: 1/8" = 1'-0"

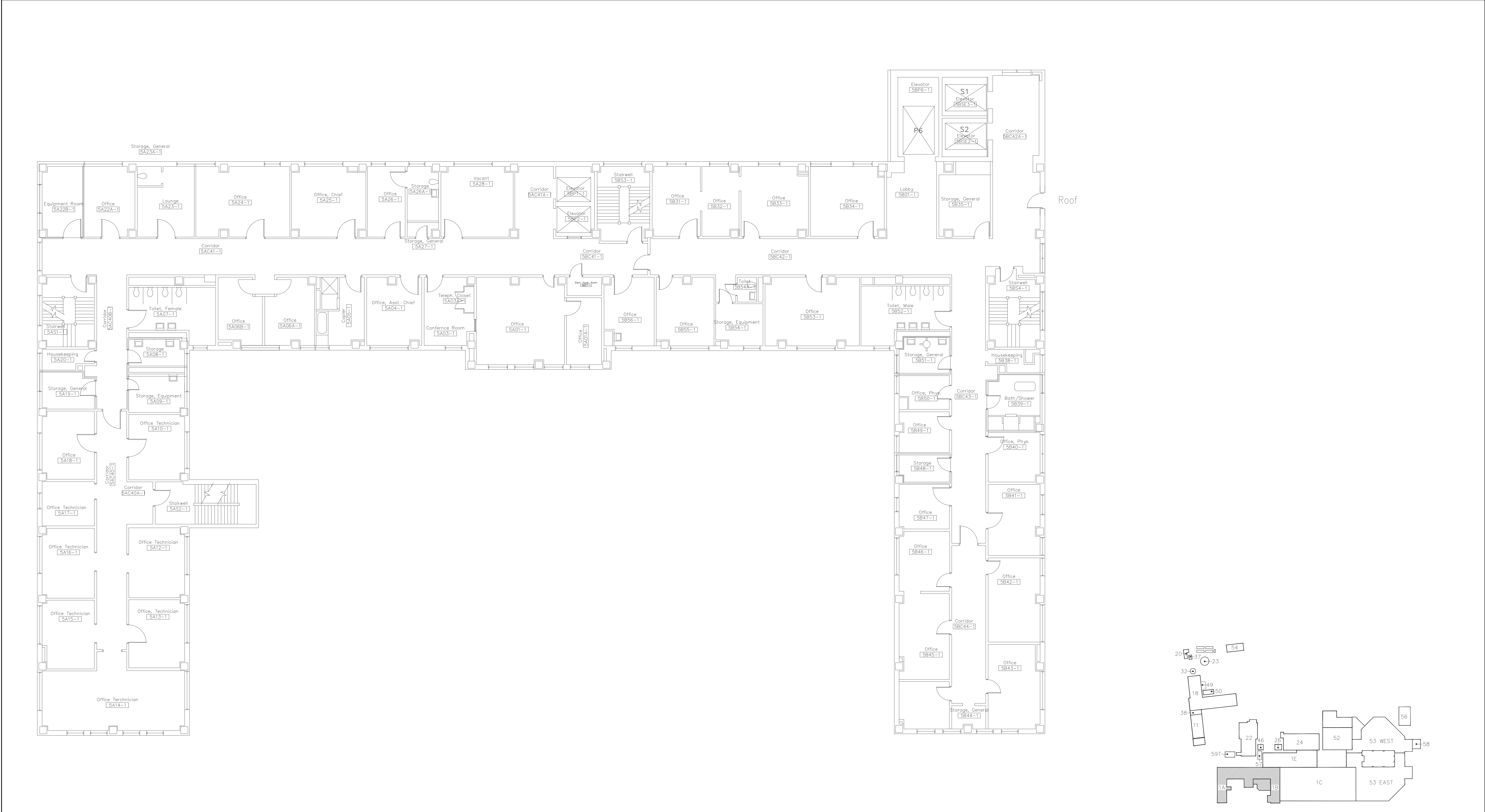


ISSUED FOR CONSTRUCTION

No.	Description	Date	CONSULTANTS: <div><div><div>KJW</div><div>ENGINEERING CONSULTANTS</div><div>Experience you can build on</div></div><div>870 SUMMIT DRIVE, SUITE 104 ST. LOUIS, MISSOURI 63105 PHONE: 314.435.1173 WWW.KJW.COM</div><div>STRUCTURAL   MECHANICAL   ELECTRICAL TECHNOLOGY   MEDICAL EQUIPMENT SOLUTIONS</div><div>KJW AF Product 1516 (CAPABILITY OF Authority) 805200002</div></div>	ARCHITECTS/ENGINEERS: <div><div><div></div><div>303rd Engineering Group, LLC</div><div>Service-Disabled Veteran-Owned Small Business</div></div><div>1925 ARSENAL STREET ST. LOUIS, MO 63118 PHONE: 314.435.1173 HTTP://WWW.303ENGINEERING.COM</div></div>	<div><div><div></div><div>Dept. of Veterans Affairs Jack C. Montgomery Medical Center 1011 Honor Height Drive Muskogee, Oklahoma 74401</div></div></div>		APPROVED:	APPROVEDPresident AF.G.E. 2250	APPROVEDEnergy Engineer	APPROVEDMedical Center Director	Drawing Title: <b>FOURTH FLOOR SECTIONS A &amp; B - DEMOLITION</b>	Project Title: <b>REPLACE SURVEILLANCE SYSTEM</b>	Date: 08.23.13	Project No. 623.12.105	Drawing No. <b>01 DTY108</b> Dwg. 46 of 122	Department of Veterans Affairs 
							APPROVED:	APPROVED	APPROVEDSafety Manager	APPROVEDAssociate Director						
							APPROVED:	APPROVED	APPROVEDInfection Control Nurse	APPROVEDChief of Staff						
							APPROVED:	APPROVED	APPROVEDIndustrial Hygienist	APPROVEDChief of Engineering Service						
							APPROVED:	APPROVED								
Revisions									Scale: <b>AS SHOWN</b>	Building Number: 1	Approved: TWC - JCMVAMC	Checked By: DAVLAR	Drawn By: KEIEVE	Location: Jack C. Montgomery VA Medical Center - Muskogee, OK		







Department of  
Veterans Affairs