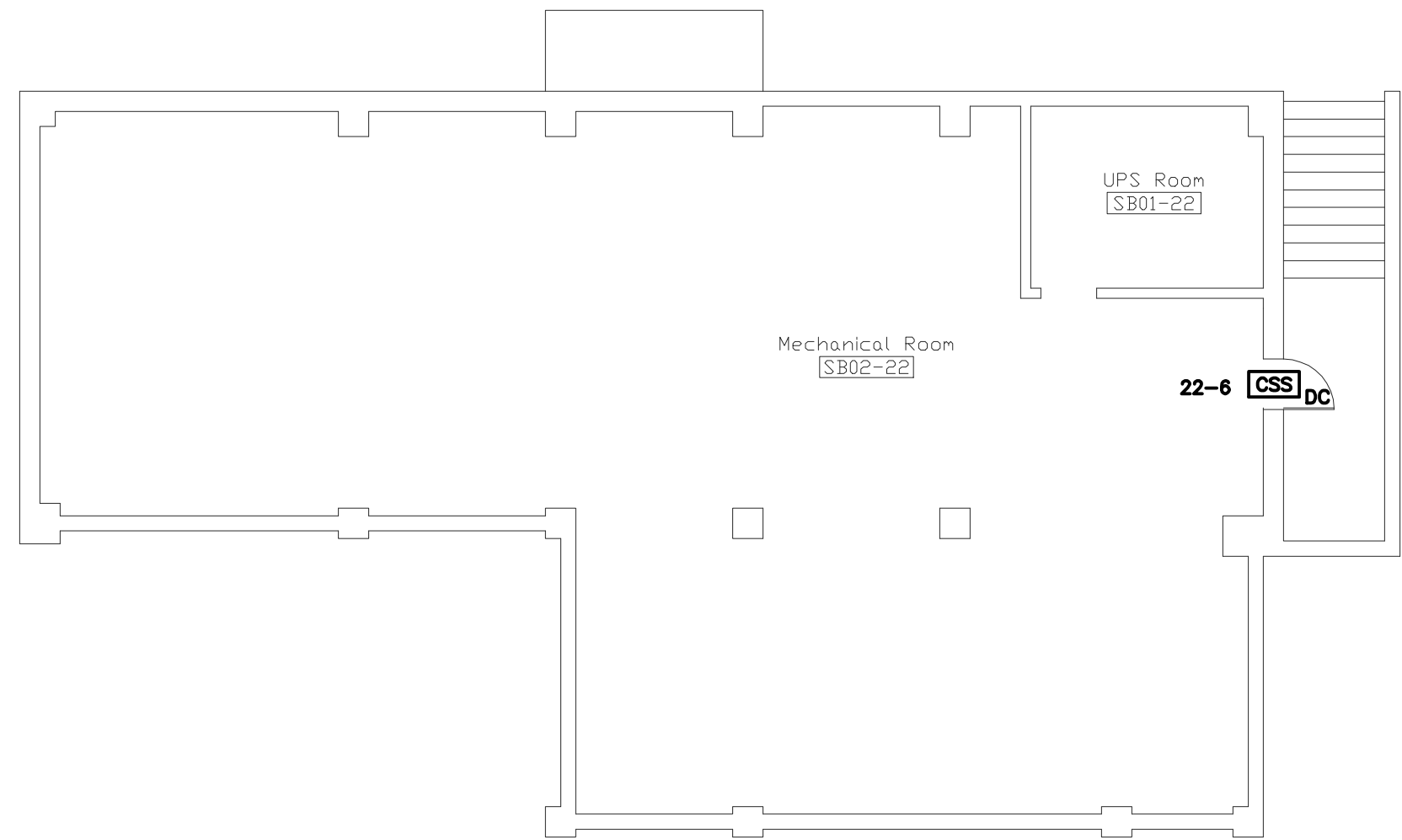
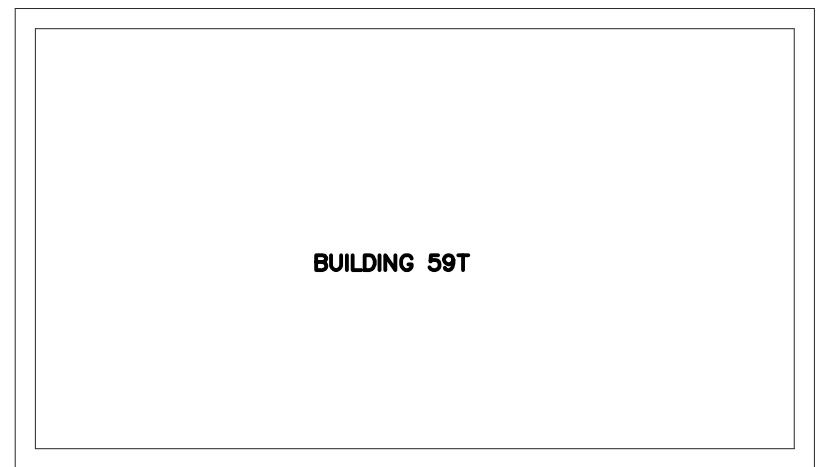


one eighth inch = one foot
one quarter inch = one foot
three eighths inch = one foot
one half inch = one foot
three quarters inch = one foot
one inch = one foot
two inches = one foot
three inches = one foot
four inches = one foot
five inches = one foot
six inches = one foot
seven inches = one foot
eight inches = one foot
nine inches = one foot
ten inches = one foot
eleven inches = one foot
twelve inches = one foot
thirteen inches = one foot
fourteen inches = one foot
fifteen inches = one foot
sixteen inches = one foot
seventeen inches = one foot
eighteen inches = one foot
nineteen inches = one foot
twenty inches = one foot
twenty one inches = one foot
twenty two inches = one foot
twenty three inches = one foot
twenty four inches = one foot
twenty five inches = one foot
twenty six inches = one foot
twenty seven inches = one foot
twenty eight inches = one foot
twenty nine inches = one foot
thirty inches = one foot
thirty one inches = one foot
thirty two inches = one foot
thirty three inches = one foot
thirty four inches = one foot
thirty five inches = one foot
thirty six inches = one foot
thirty seven inches = one foot
thirty eight inches = one foot
thirty nine inches = one foot
forty inches = one foot
forty one inches = one foot
forty two inches = one foot
forty three inches = one foot
forty four inches = one foot
forty five inches = one foot
forty six inches = one foot
forty seven inches = one foot
forty eight inches = one foot
forty nine inches = one foot
fifty inches = one foot
fifty one inches = one foot
fifty two inches = one foot
fifty three inches = one foot
fifty four inches = one foot
fifty five inches = one foot
fifty six inches = one foot
fifty seven inches = one foot
fifty eight inches = one foot
fifty nine inches = one foot
sixty inches = one foot
sixty one inches = one foot
sixty two inches = one foot
sixty three inches = one foot
sixty four inches = one foot
sixty five inches = one foot
sixty six inches = one foot
sixty seven inches = one foot
sixty eight inches = one foot
sixty nine inches = one foot
seventy inches = one foot
seventy one inches = one foot
seventy two inches = one foot
seventy three inches = one foot
seventy four inches = one foot
seventy five inches = one foot
seventy six inches = one foot
seventy seven inches = one foot
seventy eight inches = one foot
seventy nine inches = one foot
eighty inches = one foot
eighty one inches = one foot
eighty two inches = one foot
eighty three inches = one foot
eighty four inches = one foot
eighty five inches = one foot
eighty six inches = one foot
eighty seven inches = one foot
eighty eight inches = one foot
eighty nine inches = one foot
ninety inches = one foot
ninety one inches = one foot
ninety two inches = one foot
ninety three inches = one foot
ninety four inches = one foot
ninety five inches = one foot
ninety six inches = one foot
ninety seven inches = one foot
ninety eight inches = one foot
ninety nine inches = one foot
one hundred inches = one foot



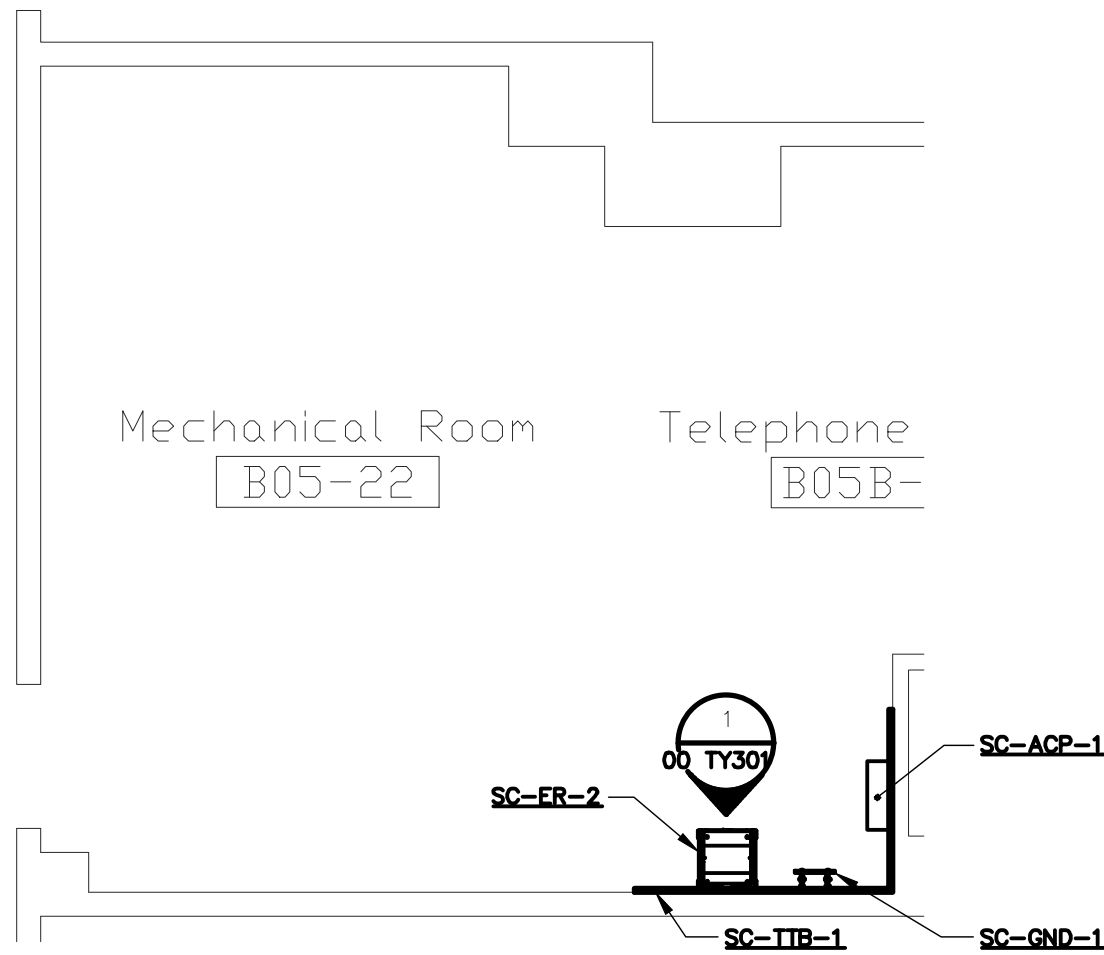
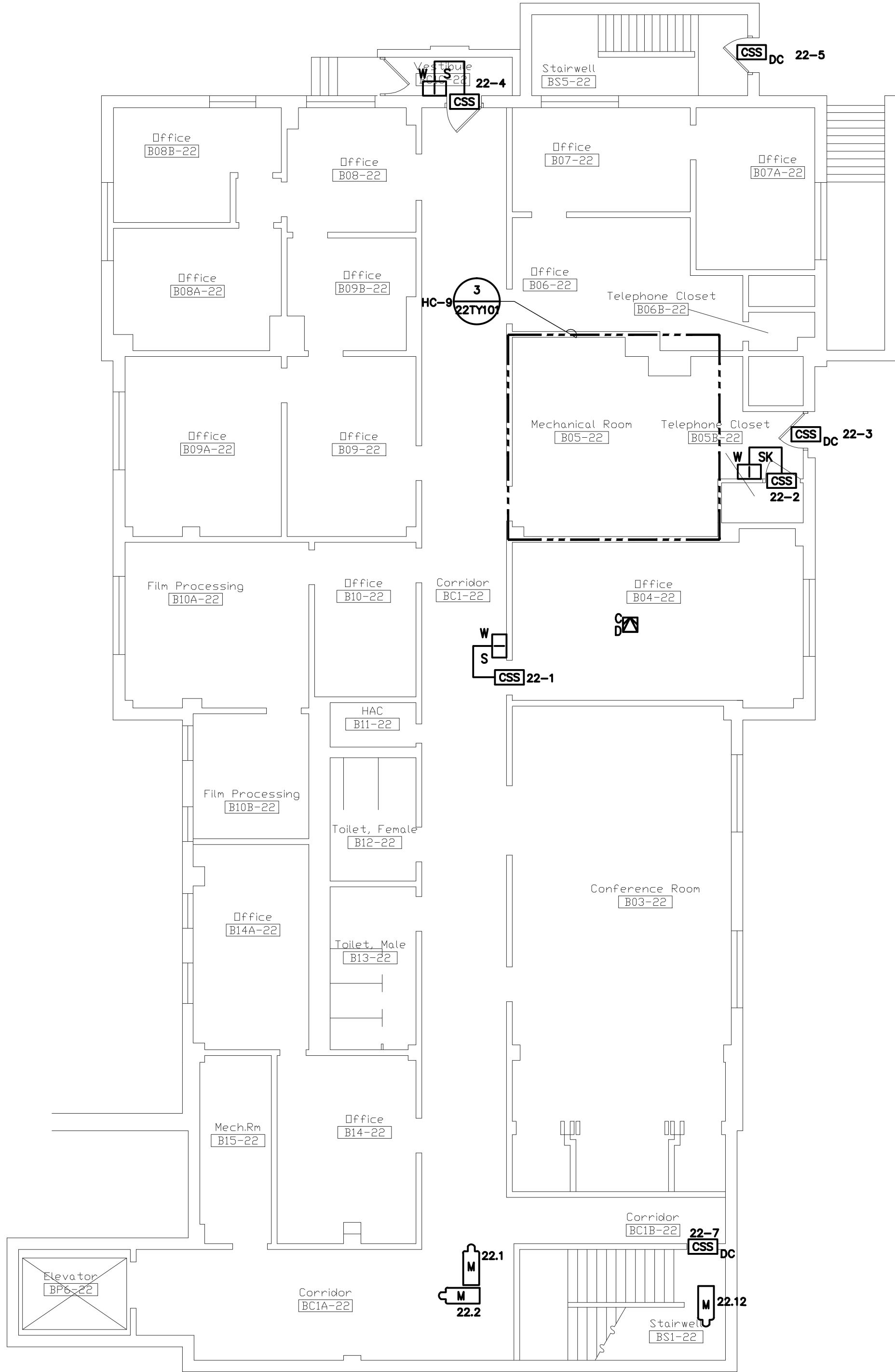
BUILDING 22 SUB-BASEMENT - SECURITY

SCALE: 1/8"=1'-0"



BUILDING 22 BASEMENT - SECURITY

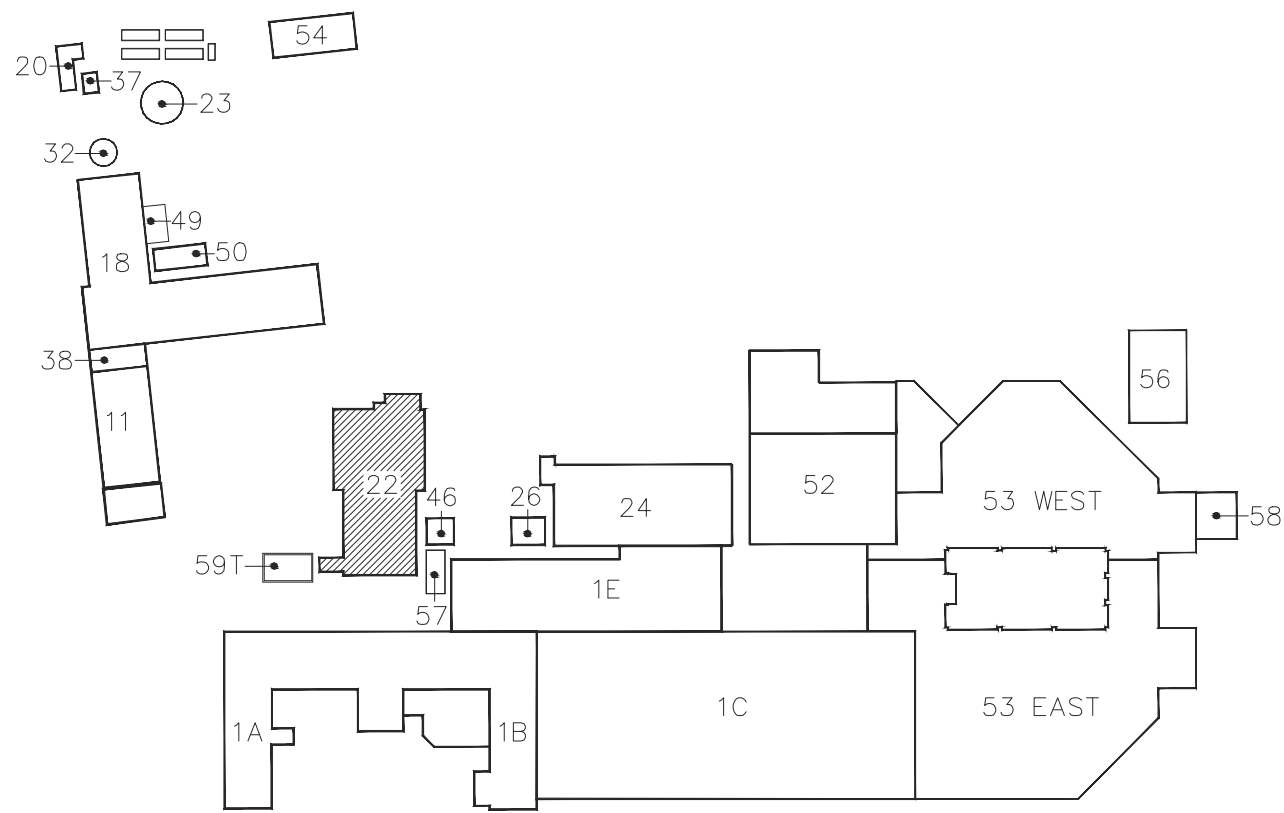
SCALE: 1/8"=1'-0"



TECHNOLOGY ROOM LAYOUT HC-9

SCALE: 1/4"=1'-0"

- NOTES:**
1. REFER TO ELECTRICAL DRAWINGS FOR GROUNDING RISER DIAGRAM.
 2. REFER TO 2/00 TY401 FOR CONNECTIVITY RISER DIAGRAM.
 3. REFER TO 00 TY600 FOR TECHNOLOGY GENERAL EQUIPMENT SCHEDULE.

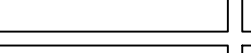
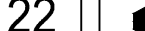




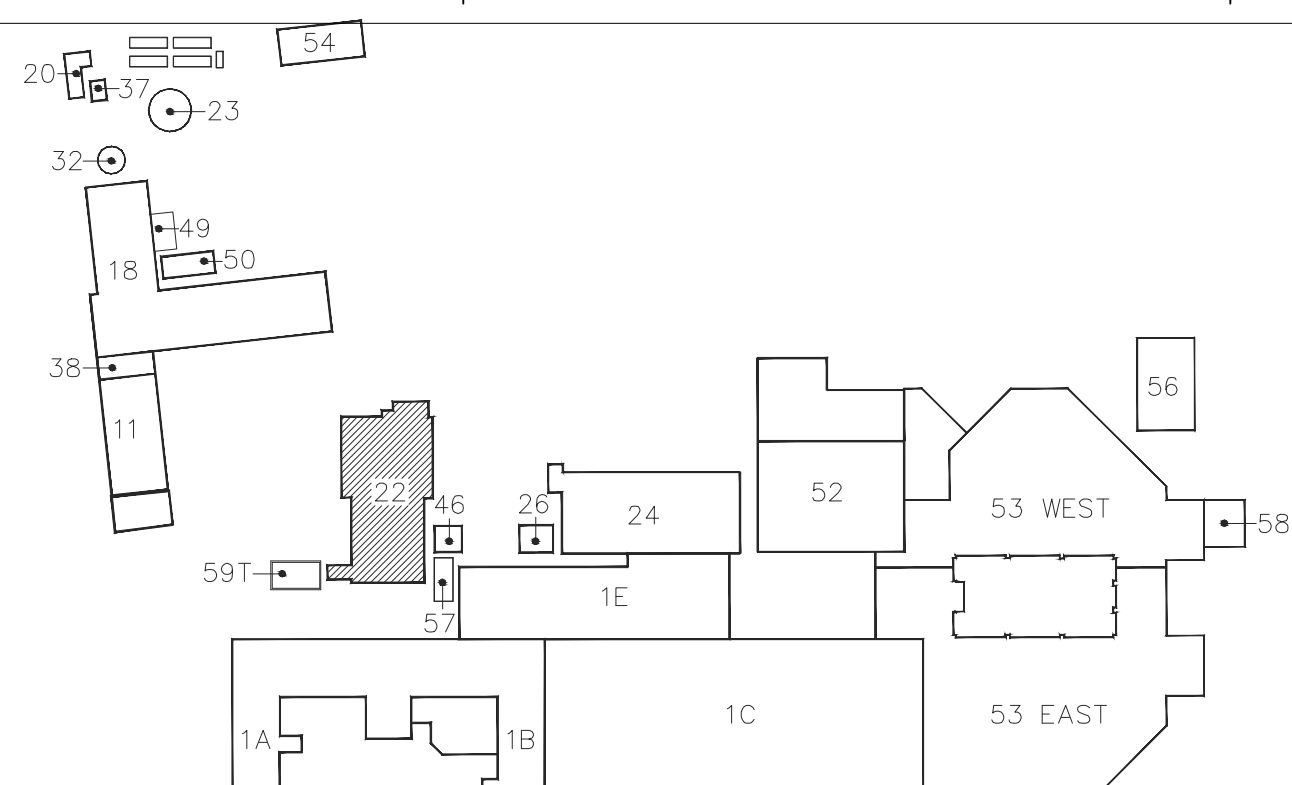
KEY PLAN

NO SCALE

SCALE: 1/8"=1'-0"

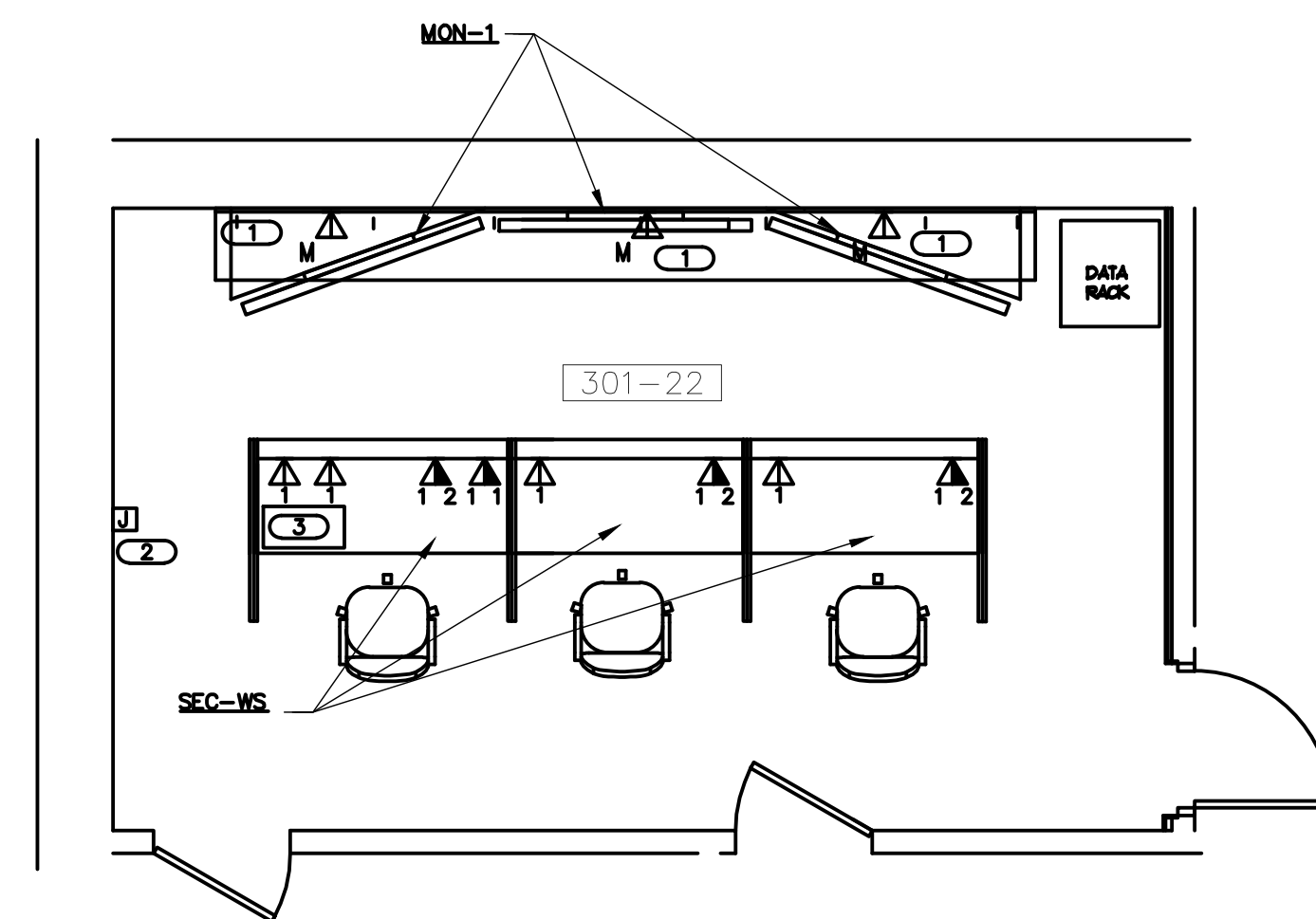
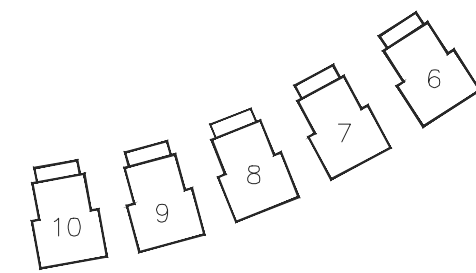
ISSUED FOR CONSTRUCTION

No.	Description	Date	CONSULTANTS:	ARCHITECTS/ENGINEERS:	<div><div>Dept. of Veterans Affairs Jack C. Montgomery Medical Center 1011 Honor Height Drive Muskogee, Oklahoma 74401</div></div>	APPROVED:	APPROVED:President A.F.G.E. 2250	APPROVED:Energy Engineer	APPROVED:Medical Center Director	Drawing Title:	Project Title:	Date:	<div>Department of Veterans Affairs</div> <div></div>			
			<div><div></div><div>ENGINEERING CONSULTANTS</div><div>Experience you can build on</div><div>875 DUNN DRIVE, SUITE 104 ST. LOUIS, MISSOURI 63143 203-711-1136 FAX: 203-711-1173 WWW.KJWW.COM</div><div>STRUCTURAL MECHANICAL ELECTRICAL TECHNOLOGY MEDICAL EQUIPMENT SOLUTIONS</div><div>Missouri State Capital City, St. Louis, Missouri 63102-0001</div></div>	<div></div> <div>303rd Engineering Group, LLC Service-Disabled Veteran-Owned Small Business 1925 ARSENAL STREET ST. LOUIS, MO 63118 PHONE: (314) 564-3282 HTTP://WWW.303ENGINEERING.COM</div>			APPROVED:	APPROVED:	APPROVED:Safety Manager	APPROVED:Associate Director	Scale:	Approved:		Checked By:	Drawn By:	Project No:
							APPROVED:	APPROVED:	APPROVED:Infection Control Nurse	APPROVED:Chief of Staff	AS SHOWN	TWC - JCMVAMC		DAVLAR	KEIEVE	22 TY101
							APPROVED:	APPROVED:	APPROVED:Industrial Hygienist	APPROVED:Chief of Engineering Service	Building Number:	Location:				Dwg. 73 of 122
											22	Jack C. Montgomery VA Medical Center - Muskogee, OK				
Revisions																

KEYNOTES

KEYNOTES

1. THIS CAMERA IS AL
00TY001



Date:
08.23.13

Project No.
623.12.105

Drawing No.
22 TY102

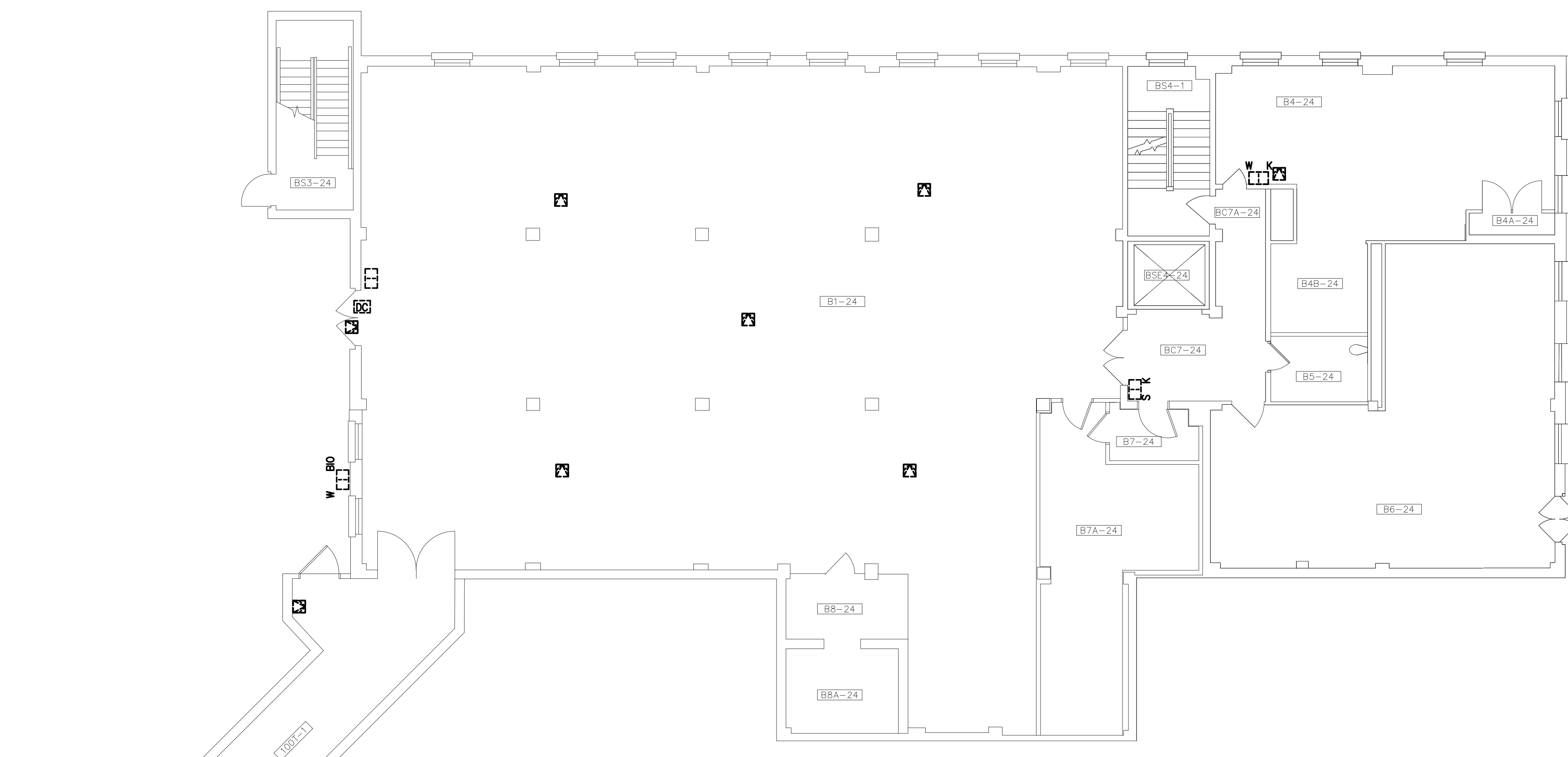
Dwg. 74 of 122



Department of
Veterans Affairs

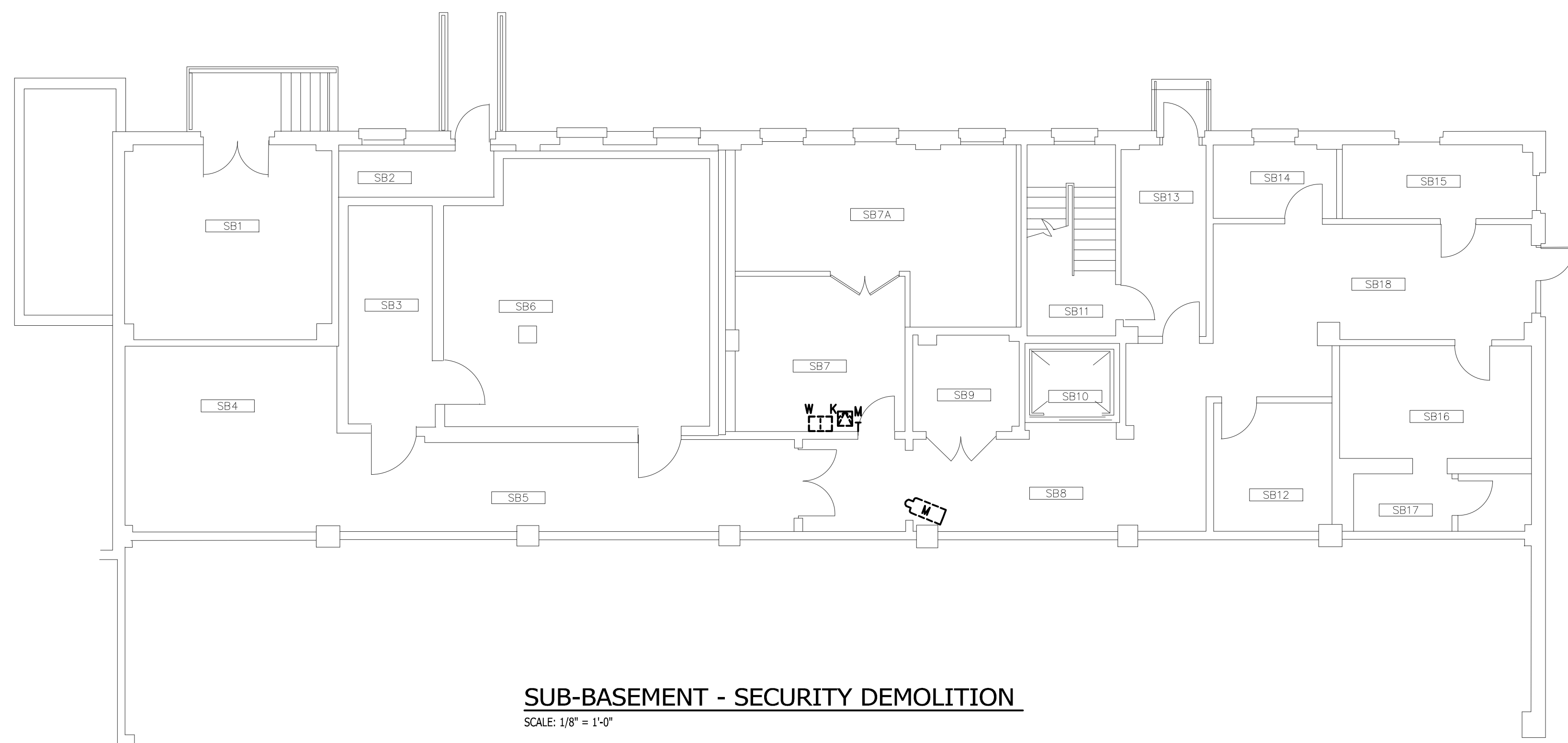
GENERAL NOTES

1. AFTER DEMOLITION OF DEFINED DEVICES, OTHER EXISTING DEVICES MAY REMAIN OPERATIONAL ON THE SEVERAL CONTROL PANELS. CONFIGURATION OF DEMOLISHED DEVICES SHALL BE REMOVED FROM THE CONTROL PANELS WHICH REMAIN OPERATIONAL.
2. DEMOLISHED CABLES SHALL BE REMOVED BACK TO THEIR SOURCE.
3. ALL REMOVED DEVICES, LESS CABLEING, SHALL BE RETURNED TO THE OWNER.



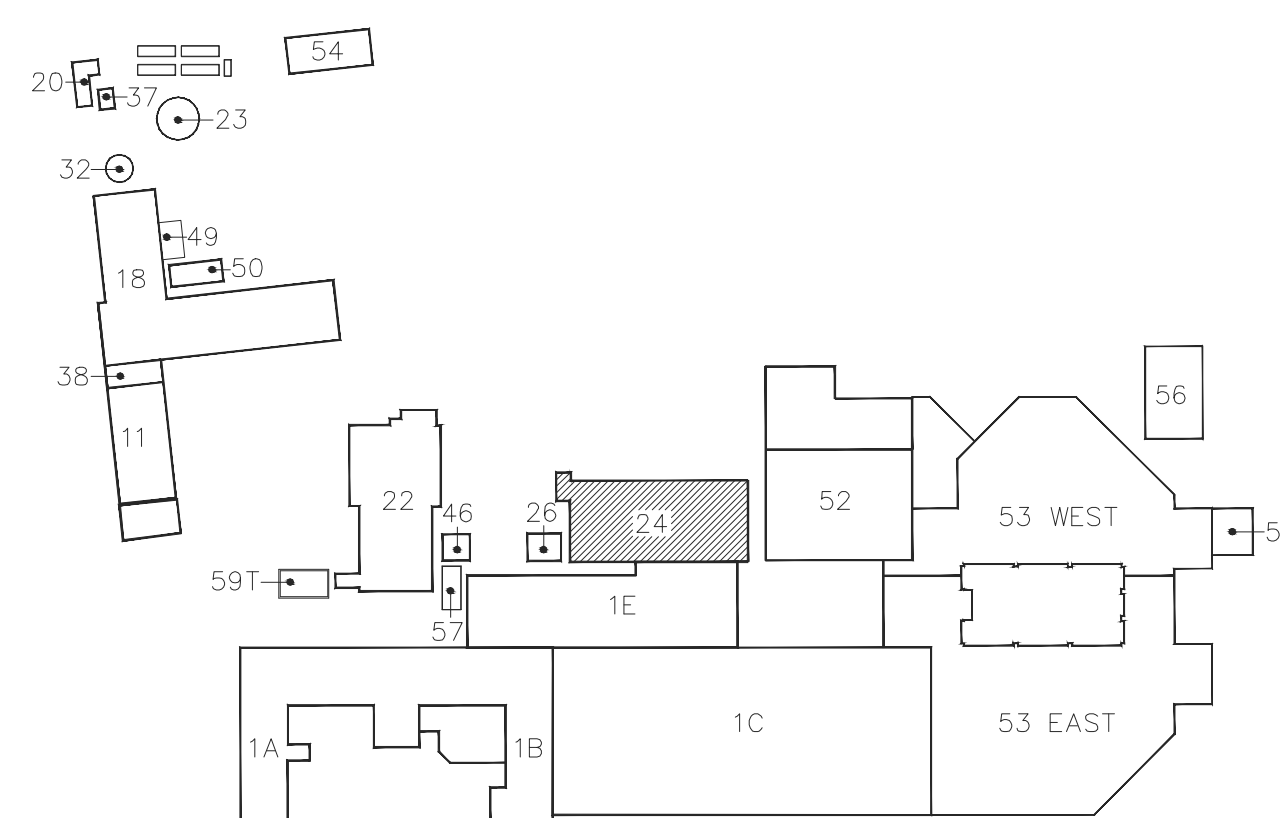
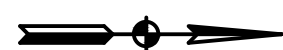
BASEMENT - SECURITY DEMOLITION

SCALE: 1/8" = 1'-0"



SUB-BASEMENT - SECURITY DEMOLITION

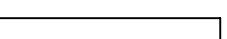

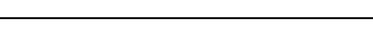
SCALE: 1/8" = 1'-0"



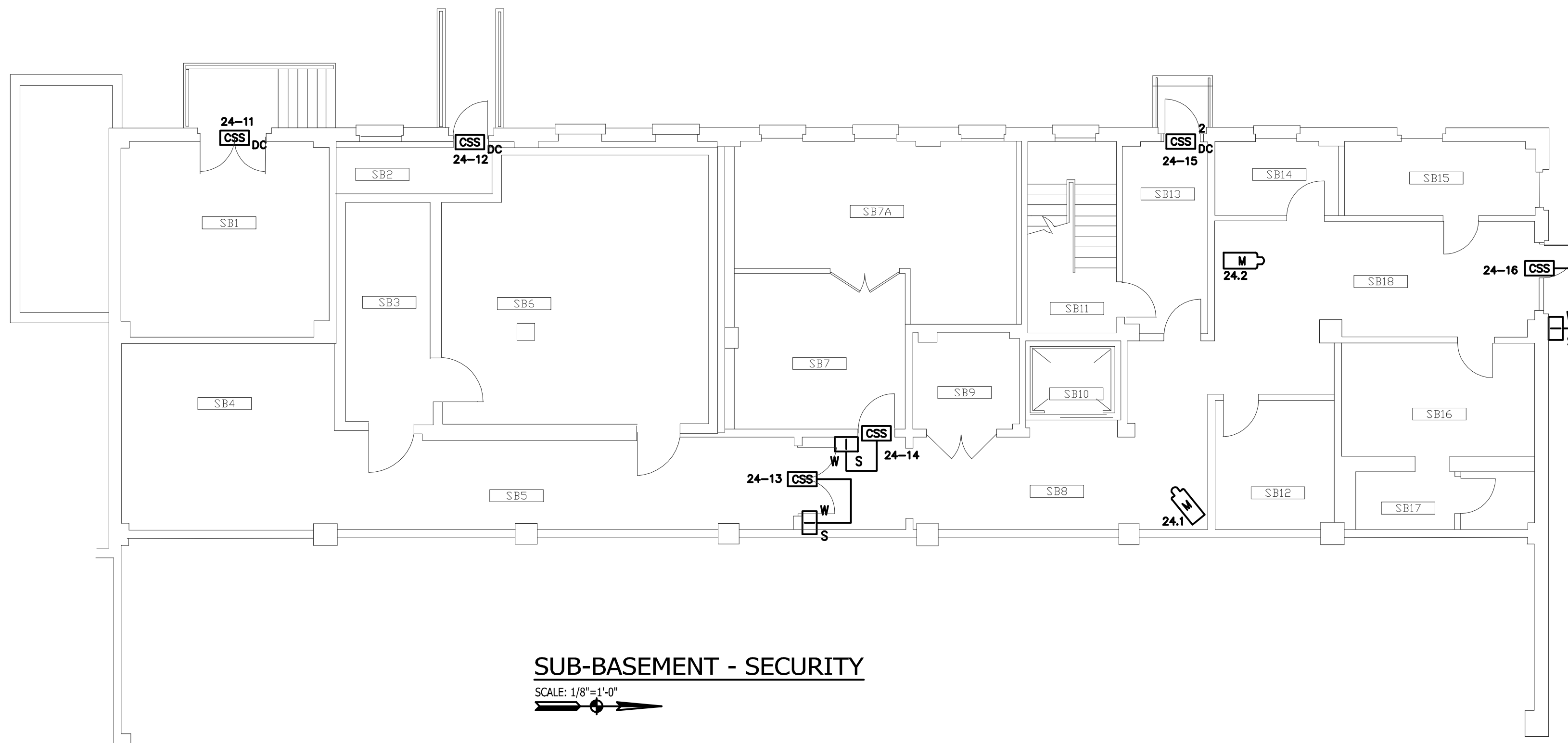
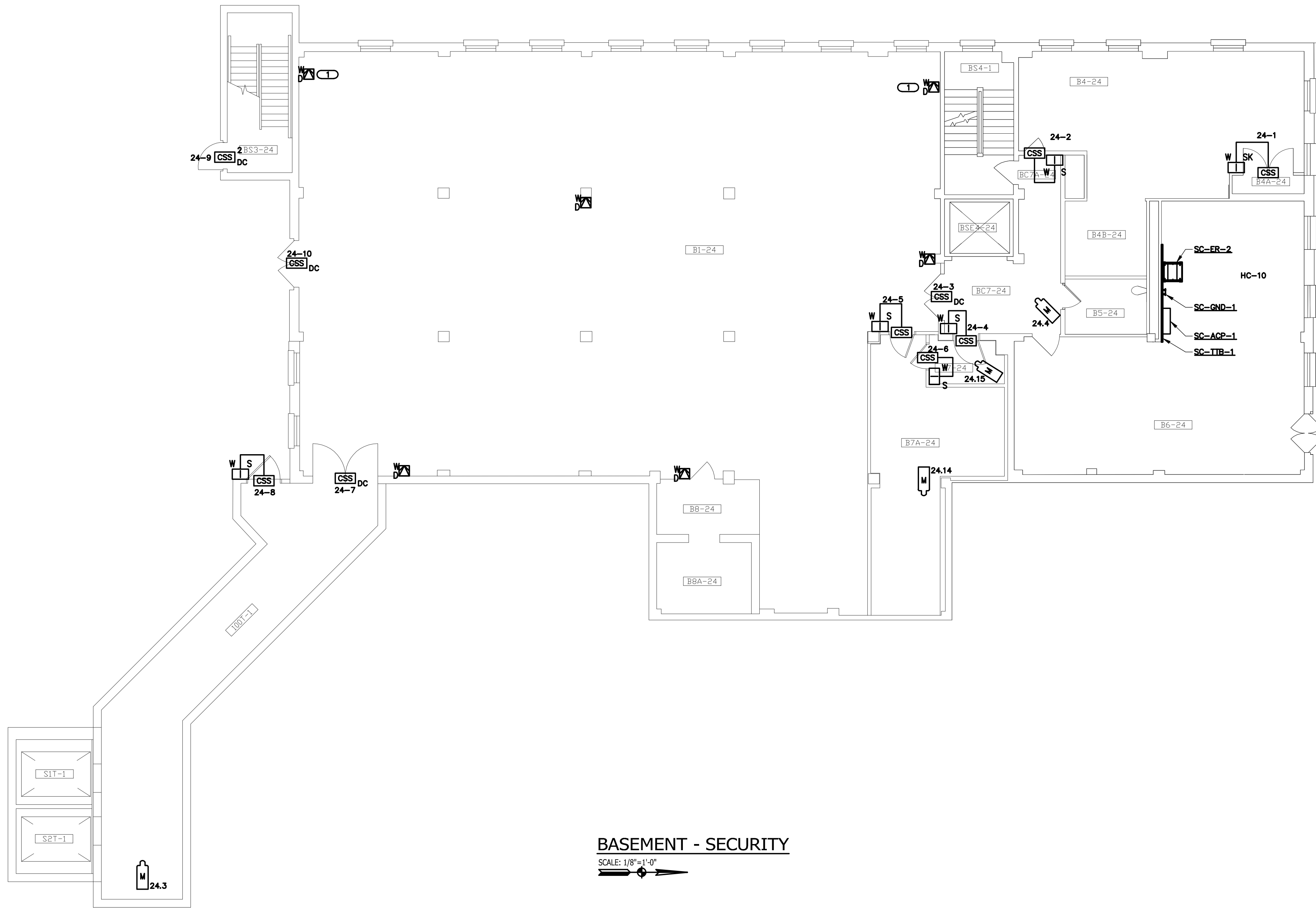
KEY PLAN

NO SCAL



No.	Description	Date	CONSULTANTS:	ARCHITECTS/ENGINEERS:			APPROVED:	APPROVED:President A.F.G.E. 2250	APPROVED:Energy Engineer	APPROVED:Medical Center Director	Drawing Title: SUB-BASEMENT AND BASEMENT - DEMOLITION	Project Title: REPLACE SURVEILLANCE SYSTEM	Date: 08.23.13	 Department of Veterans Affairs			
			 KJWW ENGINEERING CONSULTANT Experience you can build on 1717 12TH STREET, SUITE 104 JACKSONVILLE, FL 32206 TEL: 904.251.1177 FAX: 904.251.1177 WWW.KJWWENGINEERING.COM <small>Member: State (FL) License of Authority: 900000000</small>	 303rd Engineering Group, LLC <i>A Service-Disabled Veteran-Owned Small Business</i> 1930 ARSENAL STREET JACKSONVILLE, FL 32206 PHONE: 904.416.6646/3382 HTTP://WWW.D3ENGINEERING.COM							Project No. 623.12.105	Drawing No. 24 DTY101 Dwg. 75 or 122					
													Scale: AS SHOWN		Approved: TWC - JCMVAMC	Checked By: DAVLAR	Drawn By: KEIEVE
													Building Number: 24		Location: Jack C. Montgomery VA Medical Center - Muskogee, OK		
Revisions							APPROVED:	APPROVED:	APPROVED:Infection Control Nurse	APPROVED:Chief of Staff							
							APPROVED:	APPROVED:	APPROVED:Safety Manager	APPROVED:Associate Director							
							APPROVED:	APPROVED:	APPROVED:Industrial Hygienist	APPROVED:Chief of Engineering Service							

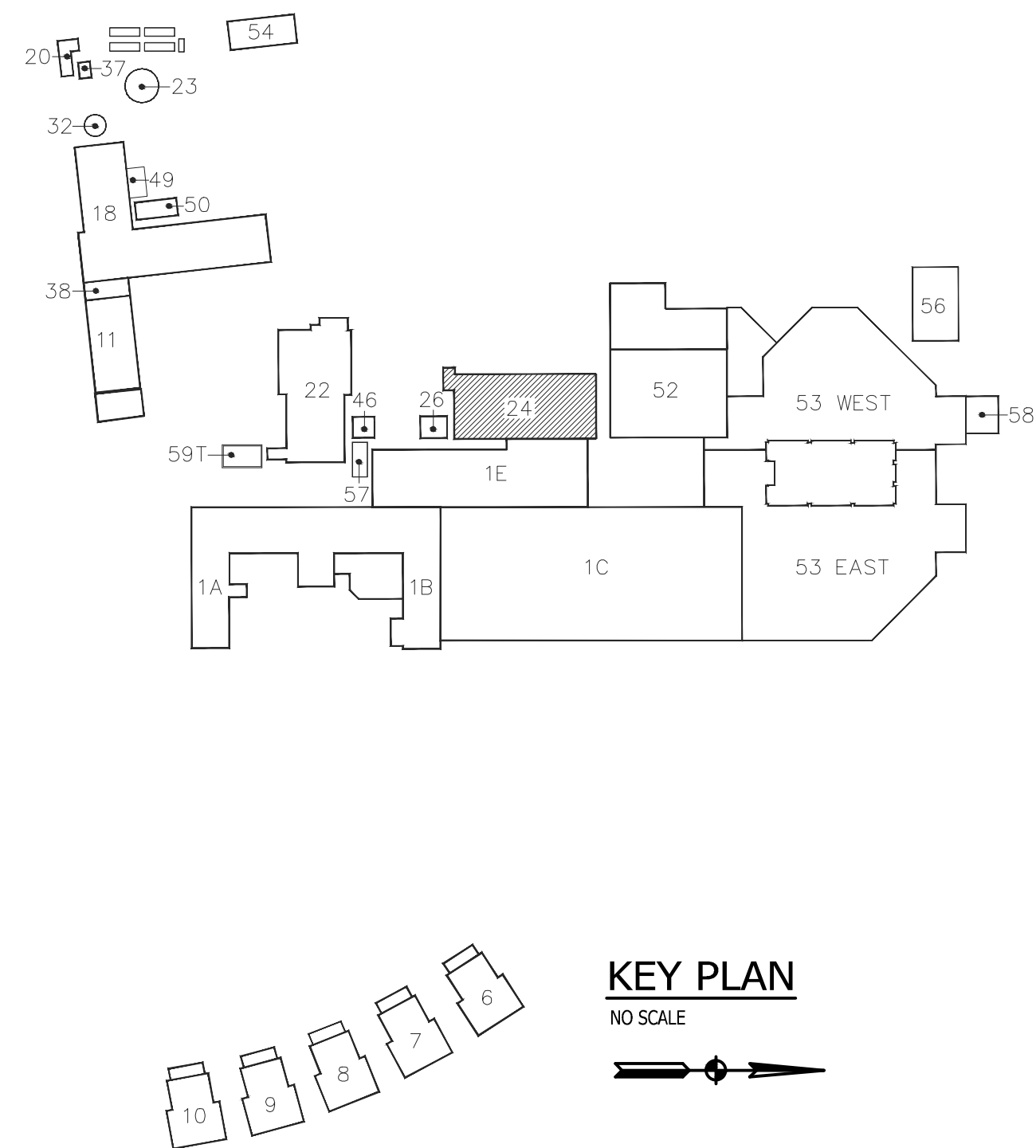
one eighth inch = one foot
one quarter inch = one foot
three eighths inch = one foot
one half inch = one foot
three quarters inch = one foot
one inch = one foot
two inches = one foot
three inches = one foot
four inches = one foot
five inches = one foot
six inches = one foot
seven inches = one foot
eight inches = one foot
nine inches = one foot
ten inches = one foot
eleven inches = one foot
twelve inches = one foot
thirteen inches = one foot
fourteen inches = one foot
fifteen inches = one foot
sixteen inches = one foot
seventeen inches = one foot
eighteen inches = one foot
nineteen inches = one foot
twenty inches = one foot
twenty one inches = one foot
twenty two inches = one foot
twenty three inches = one foot
twenty four inches = one foot
twenty five inches = one foot
twenty six inches = one foot
twenty seven inches = one foot
twenty eight inches = one foot
twenty nine inches = one foot
thirty inches = one foot
thirty one inches = one foot
thirty two inches = one foot
thirty three inches = one foot
thirty four inches = one foot
thirty five inches = one foot
thirty six inches = one foot
thirty seven inches = one foot
thirty eight inches = one foot
thirty nine inches = one foot
forty inches = one foot
forty one inches = one foot
forty two inches = one foot
forty three inches = one foot
forty four inches = one foot
forty five inches = one foot
forty six inches = one foot
forty seven inches = one foot
forty eight inches = one foot
forty nine inches = one foot
fifty inches = one foot
fifty one inches = one foot
fifty two inches = one foot
fifty three inches = one foot
fifty four inches = one foot
fifty five inches = one foot
fifty six inches = one foot
fifty seven inches = one foot
fifty eight inches = one foot
fifty nine inches = one foot
sixty inches = one foot
sixty one inches = one foot
sixty two inches = one foot
sixty three inches = one foot
sixty four inches = one foot
sixty five inches = one foot
sixty six inches = one foot
sixty seven inches = one foot
sixty eight inches = one foot
sixty nine inches = one foot
seventy inches = one foot
seventy one inches = one foot
seventy two inches = one foot
seventy three inches = one foot
seventy four inches = one foot
seventy five inches = one foot
seventy six inches = one foot
seventy seven inches = one foot
seventy eight inches = one foot
seventy nine inches = one foot
eighty inches = one foot
eighty one inches = one foot
eighty two inches = one foot
eighty three inches = one foot
eighty four inches = one foot
eighty five inches = one foot
eighty six inches = one foot
eighty seven inches = one foot
eighty eight inches = one foot
eighty nine inches = one foot
ninety inches = one foot
ninety one inches = one foot
ninety two inches = one foot
ninety three inches = one foot
ninety four inches = one foot
ninety five inches = one foot
ninety six inches = one foot
ninety seven inches = one foot
ninety eight inches = one foot
ninety nine inches = one foot
one hundred inches = one foot

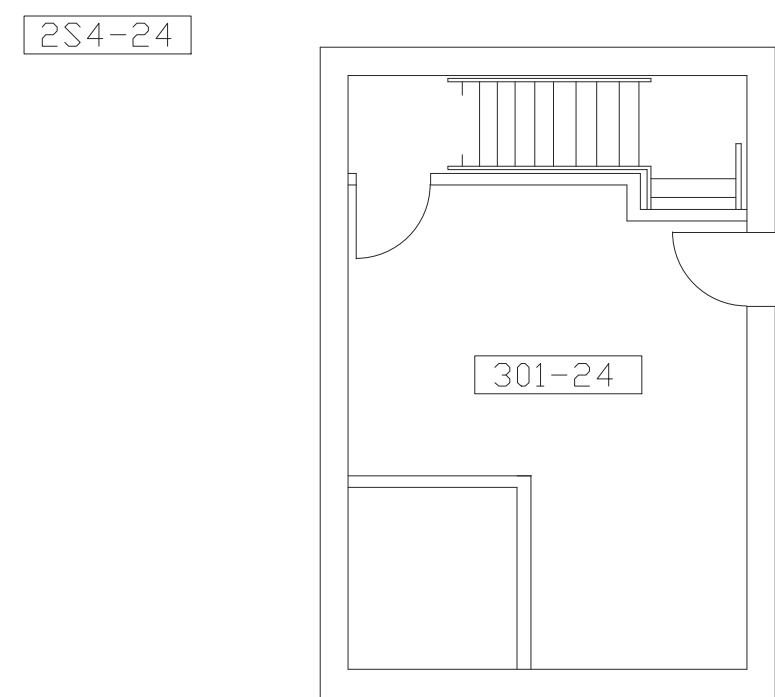


GENERAL NOTES
1. NETWORK CABLES TO DEVICES ON THIS SHEET SHALL BE ROUTED TO HC-10.

KEYNOTES

1. NARROW, LONG RANGE FIELD OF VIEW ALONG WINDOWS



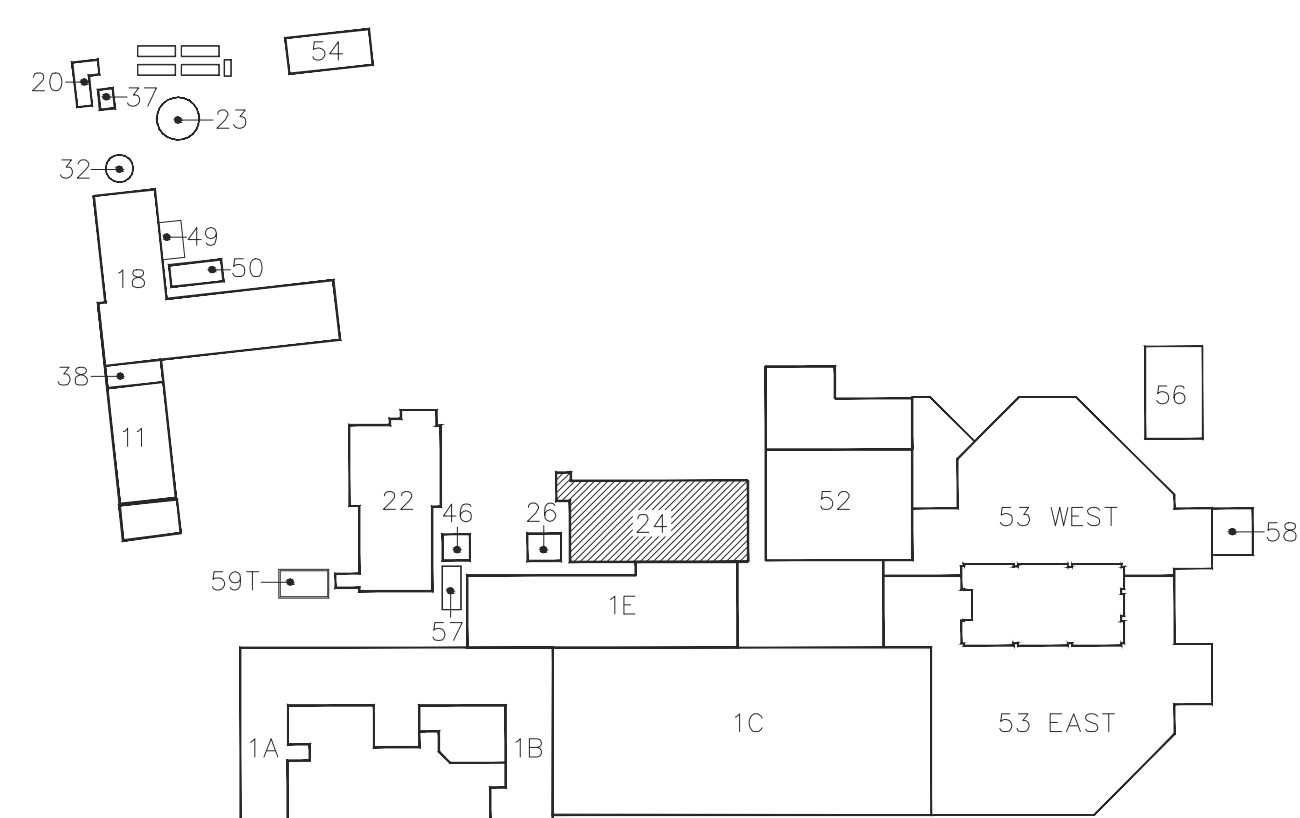


SCALE: 1/8"=1'-0"

1. NETWORK CABLES TO DEVICES ON THIS SHEET SHALL BE ROUTED TO HC-10. REFER TO 24TY101 FOR LOCATION.

1. THIS CAMERA IS ALSO SHOWN ON SHEET
00TY001.

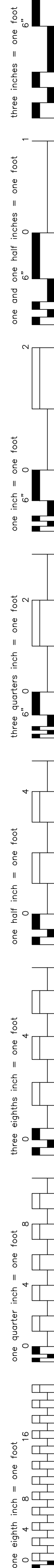
SCALE: 1/8"=1'-0"



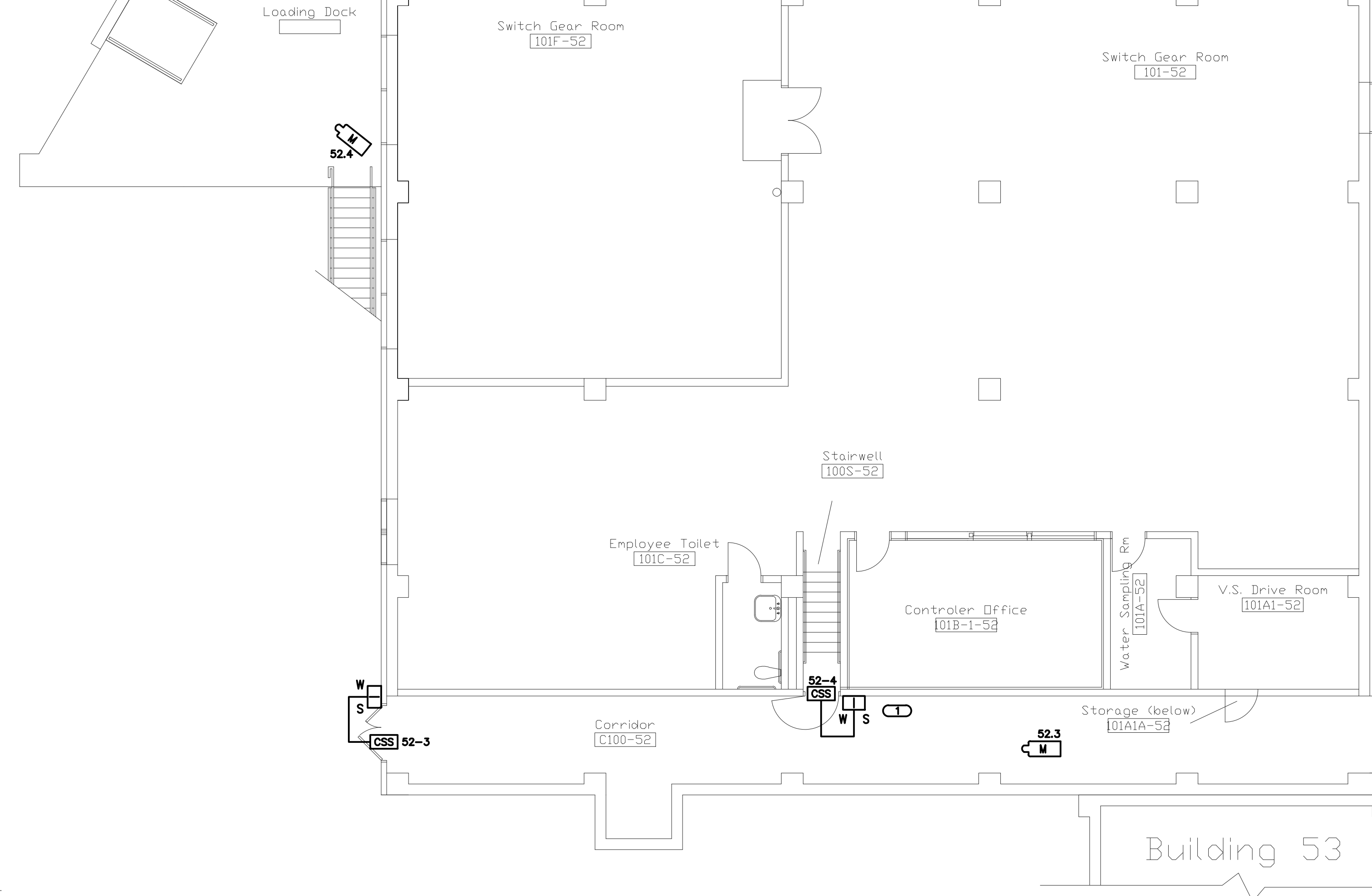
SCALE: 1/8"=1'-0"

NO SCALE

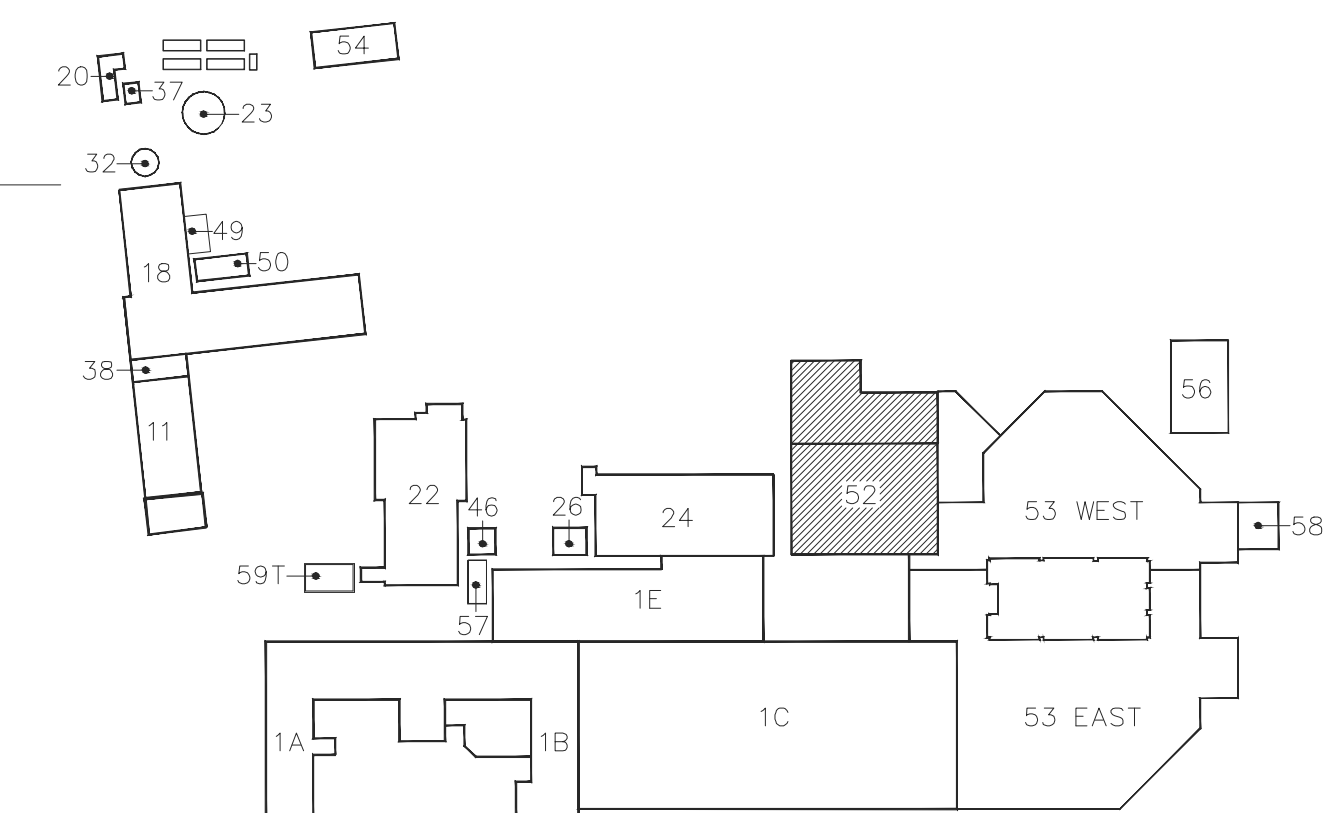
VA FORM 08-6231 PRINTED ON: August 20, 2013 ORIGINAL SIZE OF SHEET IS 30" X 42"



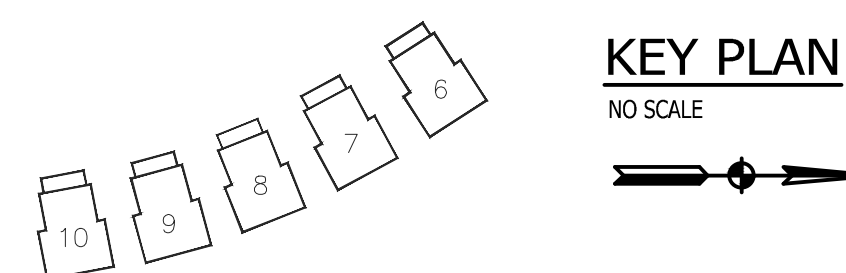
SCALE: 1/8"=1'-0"



SCALE: $1/8" = 1'-0"$



NO SCALE



ISSUED FOR CONSTRUCTION

No.	Description	Date	CONSULTANTS:		ARCHITECTS/ENGINEERS:				APPROVED:		APPROVED:President A.F.G. 2250		APPROVED:Energy Engineer		APPROVED:Medical Center Director		Drawing Title: <div>FIRST AND SECOND FLOOR</div>		Project Title: <div>REPLACE SURVEILLANCE SYSTEM</div>			Date: <div>08.23.13</div>		Department of Veterans Affairs <div></div>				
			<div><div><div>KJWW</div><div>ENGINEERING CONSULTANTS</div><div>Experience you can build on.</div><div>4710 Green Valley Road, Suite 104 Dallas, Texas 75242 Phone: (214) 353-0600 Fax: (214) 353-1773 www.kjww.com</div></div><div>303rd Engineering Group, LLC Service-Disabled Veterans-Owned Small Business 1935 ARSENAL STREET SUITE 100, BOX 878 PHOENIX, AZ 85016 PHONE: (602) 664-3382 HTTP://WWW.303ENGINEERING.COM</div></div>		<div><div><div></div><div>Dept. of Veterans Affairs Jack C. Montgomery Medical Center 1011 Honor Height Drive Muskogee, Oklahoma 74401</div></div></div>				APPROVED:		APPROVED:		APPROVED:Safety Manager		APPROVED:Associate Director		Scale: <div>AS SHOWN</div>		Approved: TWC - JCMVAMC			Checked By: DAVLAR			Drawn By: KEIEVE		Project No. <div>623.12.105</div>	
									APPROVED:		APPROVED:		APPROVED:Infection Control Nurse		APPROVED:Chief of Staff		Building Number: <div>52</div>		Location: Jack C. Montgomery VA Medical Center - Muskogee, OK			Drawing No. <div>52 TY101</div>			Dwg. 80 or 122			
									APPROVED:		APPROVED:		APPROVED:Industrial Hygienist		APPROVED:Chief of Engineering Service													
Revisions																												