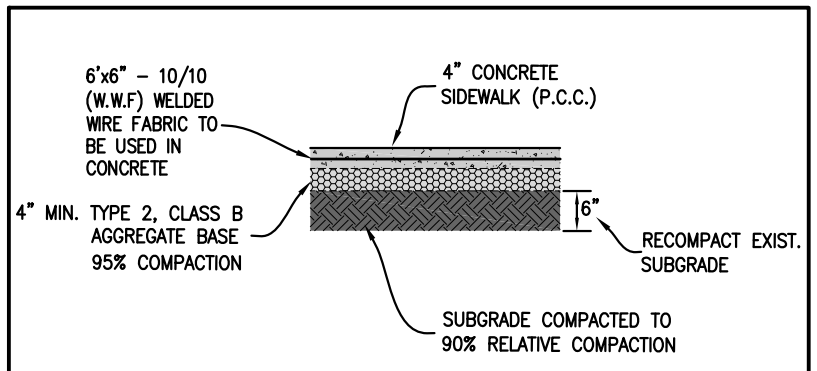
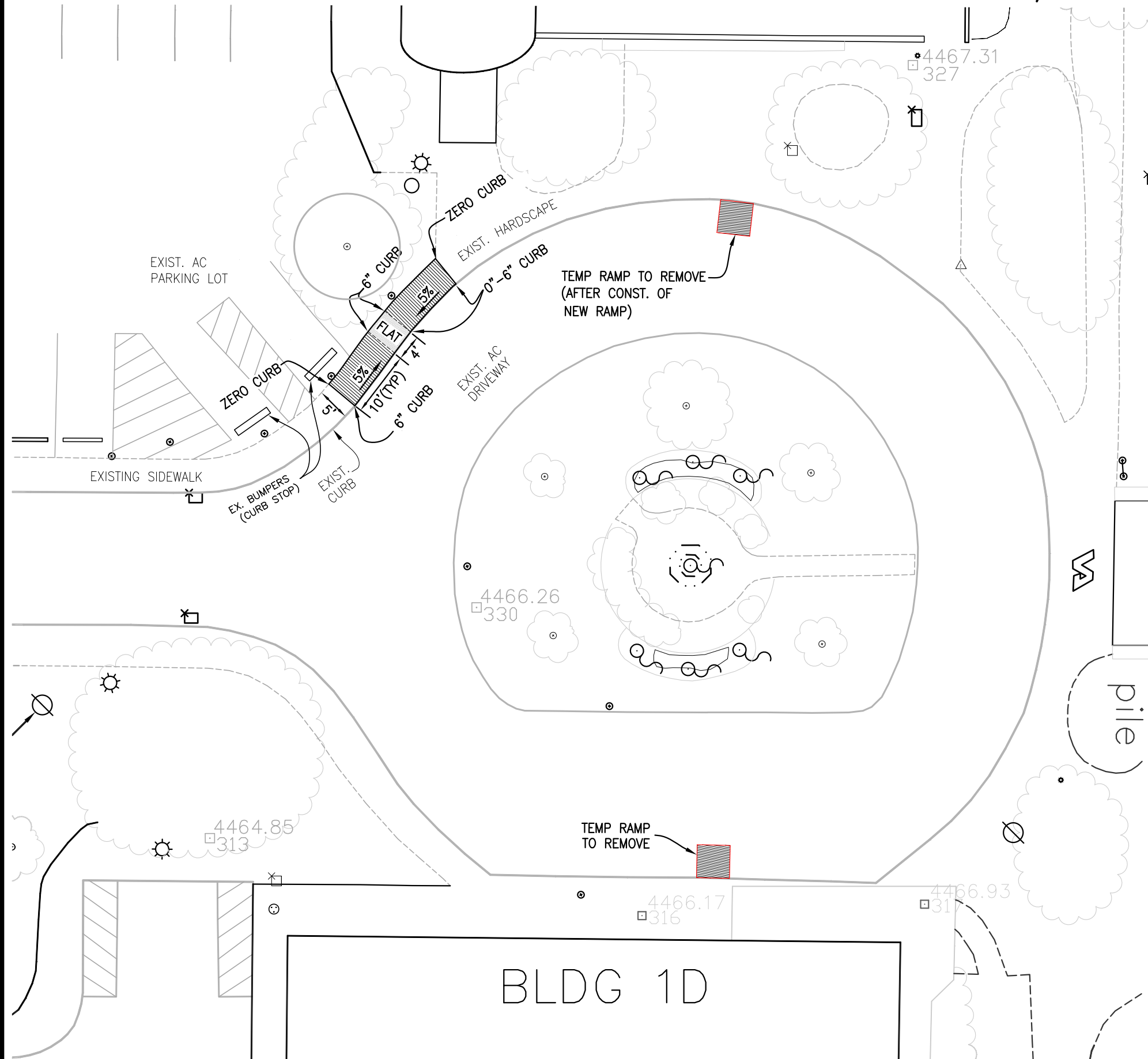
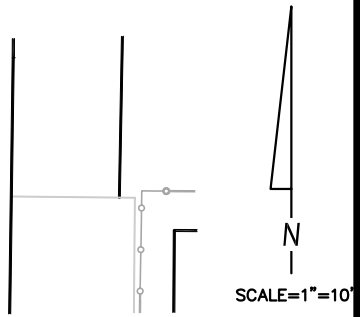


CLC ADA RAMP CONSTRUCTION / DEMO



TYPICAL SECTION
NOT TO SCALE



CONSTRUCTION NOTES:

1. THE CONTRACTOR SHALL VERIFY IN FIELD, ALL ELEVATIONS, DIMENSIONS, FLOW LINES AND EXISTING CONDITIONS. ANY DISCREPANCIES SHALL BE CALLED TO THE ATTENTION OF THE ENGINEER (COTR) PRIOR TO PROCEEDING WITH CONSTRUCTION. THE CONTRACTOR IS RESPONSIBLE FOR ANY AND ALL DAMAGE TO EXISTING UTILITIES DURING CONSTRUCTION.
2. FIBER-REINFORCED PORTLAND CEMENT CONCRETE (P.C.C.) SHALL HAVE THE FOLLOWING CHARACTERISTICS: 4000 PSI MIN. COMPRESSIVE STRENGTH AT 28 DAYS, MIN. 6 SACKS OF CEMENT PER CUBIC YARD WITH MAX. WATER-CEMENT RATIO OF 0.45, AIR ENTRAINMENT 6% \pm 1.5%.
3. WEAKENED PLANE JOINTS SHALL BE CONSTRUCTED EVERY 5' MIN.
4. CONCRETE REMOVAL SHALL BE NEAT SAW CUT LINES
5. 6'x6" - 10/10 (W.W.F) WELDED WIRE FABRIC TO BE USED IN CONCRETE

1 A
S

Date:
10-16-2014
Drawn by:
CG

CLC ADA RAMP

VAMC. RENO

Department of Veterans Affairs

VA