

DENTAL DOOR, STAIRWAY, & IT CLOSETS

THIS PROJECT INCLUDES THE FOLLOWING ITEMS:

1. INSTALL NEW STOREFRONT GLASS DOOR IN THE DENTAL WING.
2. REMOVE AND REPLACE RUBBER TREADS AND RISERS IN STAIR WELL.
3. IT CLOSETS UPGRADE. THIS WORK ENCOMPASSES VARIOUS CLOSETS LOCATED THROUGHOUT THE FACILITY. LOCATIONS ARE NOT SHOWN ON THESE DRAWINGS. LOCATIONS WILL BE PROVIDED AT THE TIME OF WORK.

VA FACILITY MANAGEMENT SERVICES, CONTRACTING OFFICERS (CO) AND CONTRACTING OFFICERS REPRESENTATIVE (COR) SHALL BE IN DAILY CONTACT WITH THE CONTRACTOR.

THE HOSPITAL WILL BE IN USE THROUGHOUT THE CONSTRUCTION PERIOD REQUIRING STRICT ADHERENCE TO INFECTION CONTROL AS DEFINED IN THE ICRA, AND IN THE "INFECTION CONTROL POLICY". THE CHEYENNE VAMC SITE ALSO REQUIRES ADHERENCE TO THE CHEYENNE VAMC "CONSTRUCTION CONTROL POLICY" INCLUDED IN THE STATEMENT OF WORK. ADDITIONALLY, ALL NOISY ACTIVITIES SHALL BE LIMITED TO AFTER 4:00 PM, MONDAY THROUGH FRIDAY AND ON WEEKENDS.

CONTRACTOR(S) ARE REQUIRED TO VISIT THE SITE PRIOR TO BIDDING AT AN AGREED UPON TIME BETWEEN THE CO, AND THE COR. PRIOR TO THE START OF WORK IT IS THE CONTRACTORS RESPONSIBILITY TO BRING TO THE ATTENTION OF THE COR ANY DEFICIENCIES IN THE EXISTING CONDITIONS, MATERIALS, METHODS, PROCEDURES OR OTHER AREAS OF CONFLICT BETWEEN THE WORK REQUIRED AND THE CONTRACT DOCUMENTS.

THE DESIGN PRESENTED ON THESE DRAWINGS ESTABLISHES THE GENERAL ARCHITECTURAL REQUIREMENTS FOR THE PROJECT. IT DOES NOT PRESENT ALL DETAILS REQUIRED FOR CONSTRUCTION. THE CONTRACTOR IS EXPECTED TO EXERCISE SOUND JUDGEMENT IN ACCORDANCE WITH CODE REQUIREMENTS.

THE DRAWINGS INDICATE LOCATION, DIMENSIONS, AND TYPICAL DETAILS OF CONSTRUCTION. FEATURES OF CONSTRUCTION SHOWN ARE TYPICAL AND APPLY GENERALLY FOR SIMILAR CONDITIONS. THE DRAWINGS DO NOT ILLUSTRATE EVERY CONDITION. IN THE EVENT THAT CERTAIN FEATURES ARE NOT FULLY SHOWN ON THE DRAWINGS OR CALLED FOR IN THE SPECIFICATIONS, THEIR CONSTRUCTION SHALL BE OF THE SAME CHARACTER AS SHOWN FOR SIMILAR CONDITIONS, OR IN ACCORDANCE WITH CONVENTIONAL PRACTICES OF APPLICABLE BUILDING CODES, OR AS CLARIFIED BY THE CONTRACTING OFFICER. WHERE DISCREPANCIES OCCUR, THEY SHALL BE REPORTED TO THE CONTRACTING OFFICER FOR RESOLUTION.

APPLICABLE CODES

1. IN ADDITION TO VA REQUIREMENTS, CONTRACTOR SHALL ADHERE TO NFPA 101, 2012 INTERNATIONAL BUILDING CODE, AND NFPA 70.

DEMOLITION

1. Perform demolition in such a manner as to eliminate hazards to persons and property and to minimize interference with use of adjacent areas. Prevent spread of flying particles and dust. Take necessary precautions to avoid damages to existing items to remain in place. Any damaged items shall be repaired or replaced as approved by the COR and at no additional cost to the government. Existing items not specifically designated for removal shall remain in place, unless otherwise directed by the COR.

WALL FINISHES

1. Provide finish texture to match adjacent walls. Provide 1 prime coat and two finish coats latex, semi-gloss paint, color to match adjacent walls. Provide resilient cove base.

FLOORING

1. Provide to match existing, adjacent flooring.

FIRESTOP

1. Install firestop material where required by code.

DOOR LOUVERS – Provide louver with security grille, PLSL as manufactured by Anemostat Door Products, or approved equal. Submit for approval to the COR.

Material: 12 GA. (2.5 mm) cold rolled steel security grille frame with 1 $\frac{3}{16}$ " (21 mm) square holes on 1" (25 mm) centers. 20 GA. (1 mm) cold rolled steel louver blades.

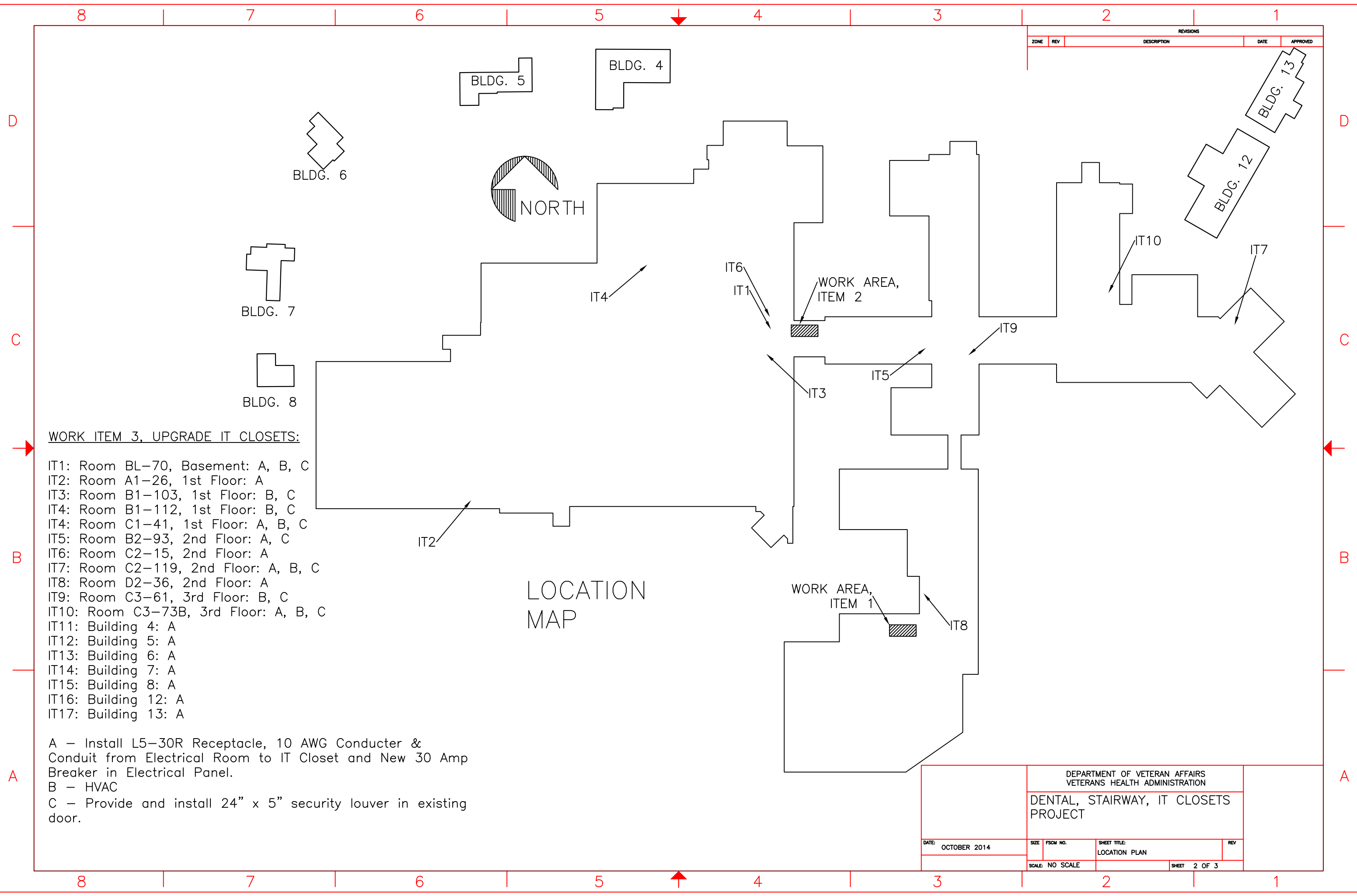
Finish: Grey primer, bronze baked enamel.

Installation: In accordance with manufacturer's installation instructions.

REVISIONS			
ZONE	REV	DESCRIPTION	DATE

DEPARTMENT OF VETERAN AFFAIRS VETERANS HEALTH ADMINISTRATION			
DENTAL, STAIRWAY, IT CLOSETS PROJECT			
DATE: OCTOBER 2014	SIZE	FSDM NO.	SHEET TITLE: TITLE SHEET & NOTES
			REV
SCALE: NO SCALE		SHEET 1 OF 3	

REVISIONS				
ZONE	REV	DESCRIPTION	DATE	APPROVED



WORK ITEM 3, UPGRADE IT CLOSETS:

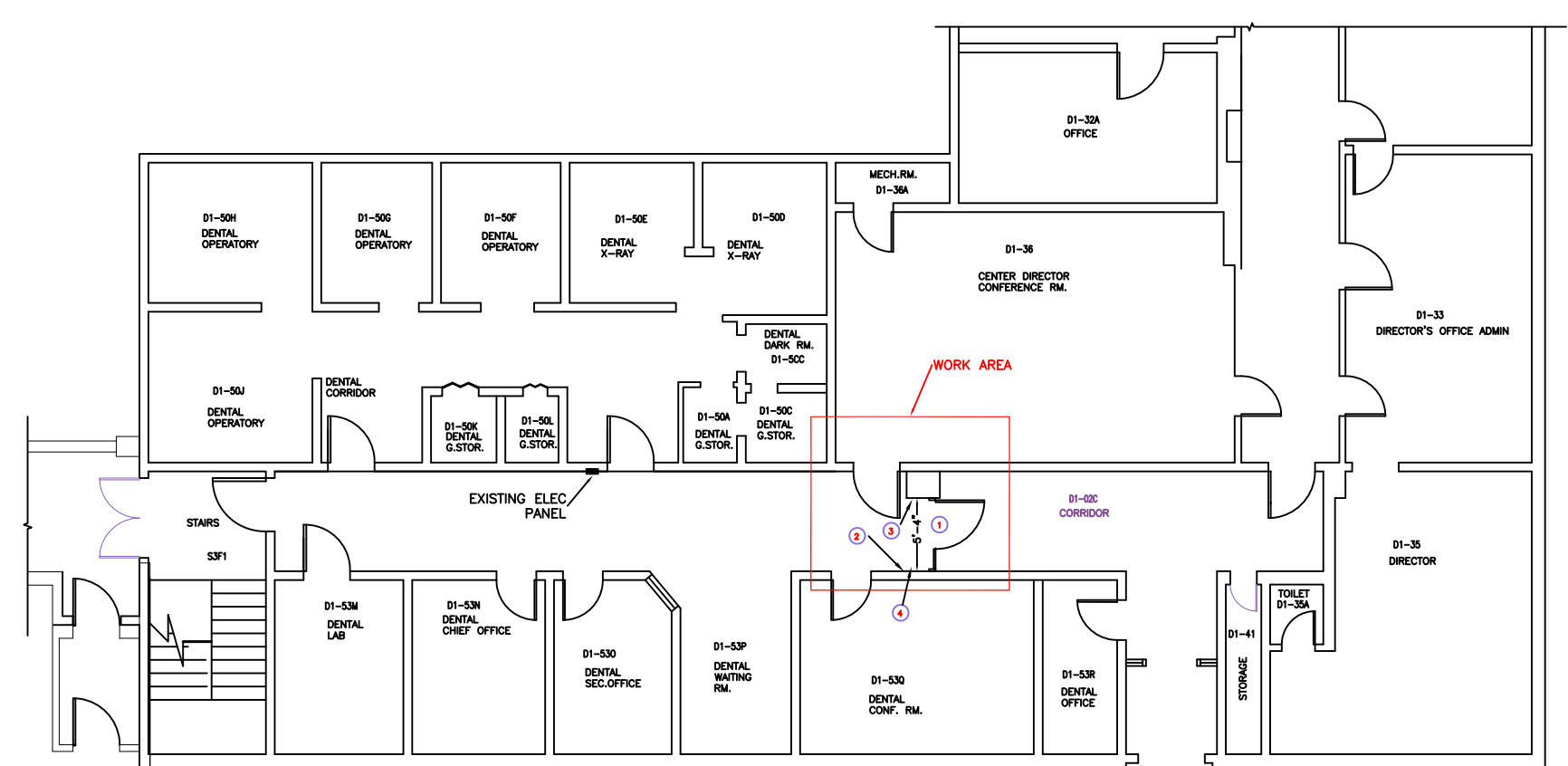
- IT1: Room BL-70, Basement: A, B, C
- IT2: Room A1-26, 1st Floor: A
- IT3: Room B1-103, 1st Floor: B, C
- IT4: Room B1-112, 1st Floor: B, C
- IT4: Room C1-41, 1st Floor: A, B, C
- IT5: Room B2-93, 2nd Floor: A, C
- IT6: Room C2-15, 2nd Floor: A
- IT7: Room C2-119, 2nd Floor: A, B, C
- IT8: Room D2-36, 2nd Floor: A
- IT9: Room C3-61, 3rd Floor: B, C
- IT10: Room C3-73B, 3rd Floor: A, B, C
- IT11: Building 4: A
- IT12: Building 5: A
- IT13: Building 6: A
- IT14: Building 7: A
- IT15: Building 8: A
- IT16: Building 12: A
- IT17: Building 13: A

- A - Install L5-30R Receptacle, 10 AWG Conductor & Conduit from Electrical Room to IT Closet and New 30 Amp Breaker in Electrical Panel.
- B - HVAC
- C - Provide and install 24" x 5" security louver in existing door.

LOCATION MAP

DEPARTMENT OF VETERAN AFFAIRS VETERANS HEALTH ADMINISTRATION			
DENTAL, STAIRWAY, IT CLOSETS PROJECT			
DATE: OCTOBER 2014	SIZE FSDM NO.	SHEET TITLE: LOCATION PLAN	REV
SCALE: NO SCALE		SHEET 2 OF 3	

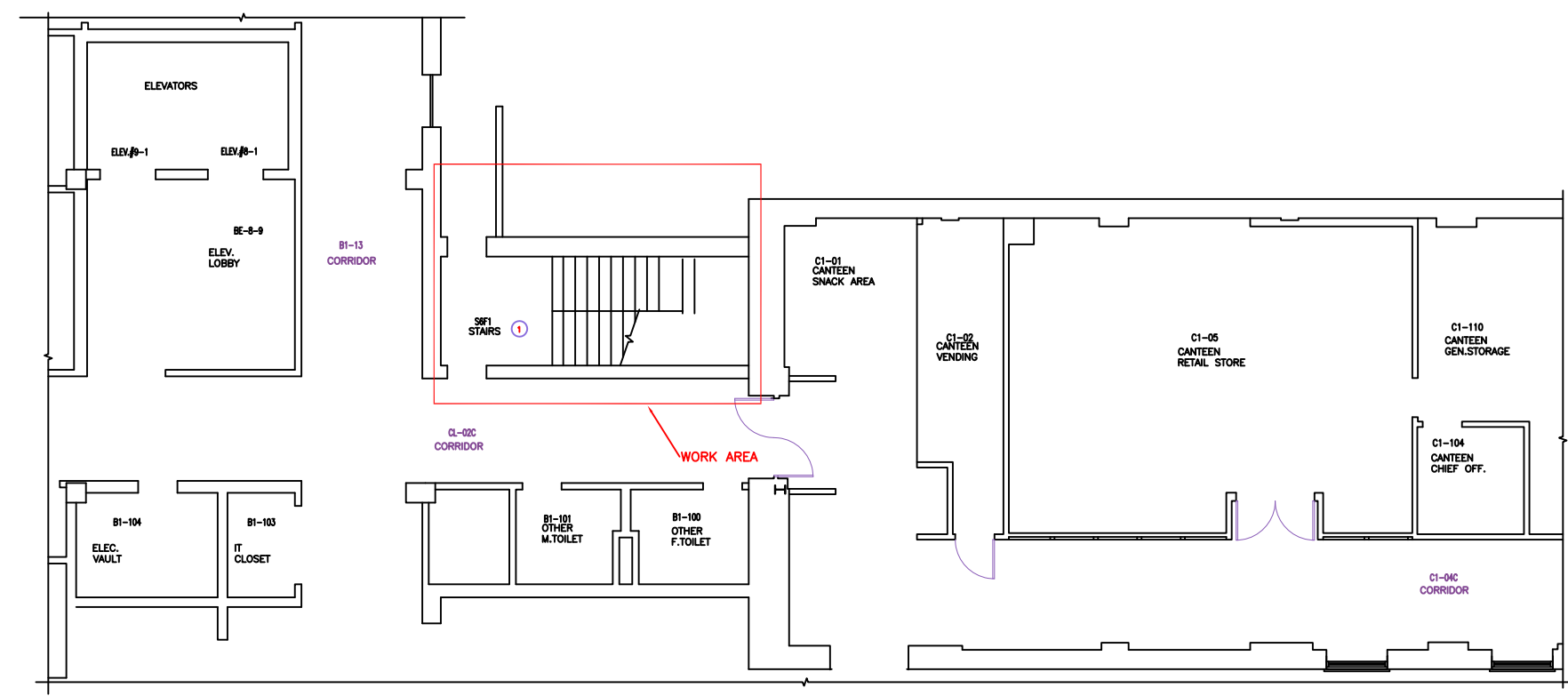
REVISIONS				
ZONE	REV	DESCRIPTION	DATE	APPROVED



FLOOR PLAN - DENTAL WING

PLAN NOTES

- ① NEW DOOR WITH TWO OPERABLE LEAVES. ACTIVE LEAF 42" WIDE, INACTIVE LEAF 18" WIDE. HARDWARE: PUSH BAR, PULL HANDLE, BUTT HINGES, 10" HANDICAP BOTTOM RAIL. INACTIVE LEAF TO HAVE STANDARD TOP AND BOTTOM FLUSH BOLTS. INCLUDE AUTOMATIC OPERATOR WITH STAINLESS STEEL REMOTE ACTIVATED SWITCHES. SWITCHES TO BE LOCATED AT TIME OF INSTALLATION. GLASS 1/2" CLEAR TEMPERED. INSTALL ELECTRICAL SERVICE FROM EXISTING ELECTRICAL PANEL LOCATED IN HALLWAY TO AUTOMATIC OPERATOR AND SWITCHES.
- ② MODIFY HANDRAIL AND BASE BOARD TO ACCOMMODATE NEW DOOR.
- ③ REMOVE HANDRAIL AND BASE BOARD. REUSE HANDRAIL MATERIALS TO MODIFY EXISTING HANDRAIL ON OPPOSITE WALL. REPAIR AND FINISH WALL TO MATCH EXISTING, ADJACENT SURFACES.
- ④ RELOCATE EXISTING EMERGENCY LIGHT LOCATED IN CEILING TILE.
- ⑤ ADJUST & MODIFY CEILING TILE SYSTEM, WALLS, FLOORING, & RESILIENT BASE TO ACCOMMODATE CHANGES MADE BECAUSE OF PROJECT WORK. REPAIR ALL ADJACENT SURFACES IMPACTED BY WORK TO MATCH EXISTING SURFACES.
- ⑥ WORK TO BE ACCOMPLISHED ON THE WEEKENDS.



FLOOR PLAN - STAIRWAY

PLAN NOTES

- ① REMOVE & REPLACE RUBBER TREADS & RISERS IN STAIRWELL FROM BASEMENT TO THIRD FLOOR. TOTAL OF 70 STEPS. NEW RUBBER TREADS & RISERS TO BE 45" WIDE. WORK TO BE ACCOMPLISHED ON WEEKENDS.

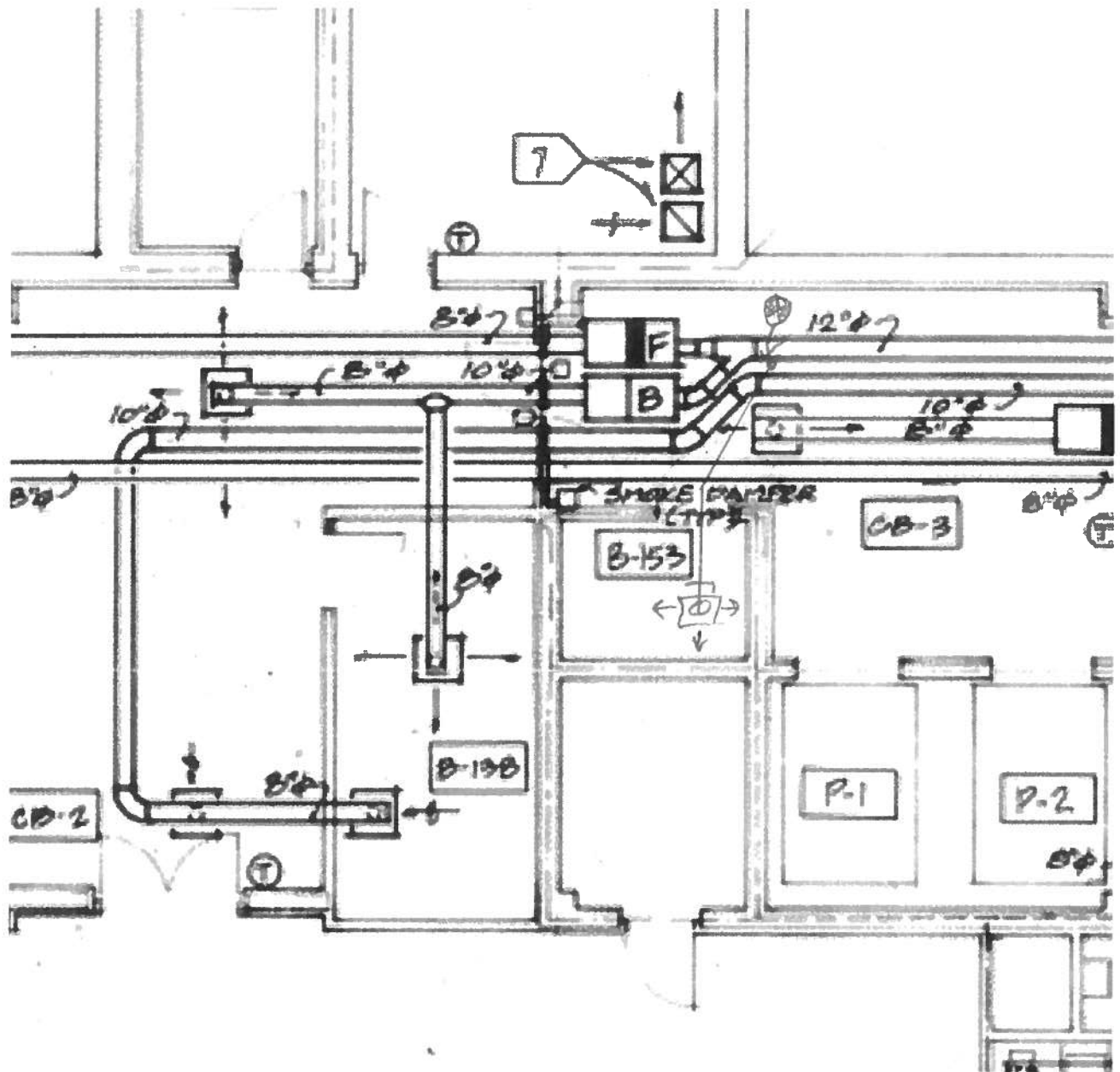
DEPARTMENT OF VETERAN AFFAIRS VETERANS HEALTH ADMINISTRATION			
DENTAL, STAIRWAY, IT CLOSETS PROJECT			
DATE: OCTOBER 2014	SIZE FSCM NO.	SHEET TITLE: FLOOR PLAN - DENTAL WING, STAIRWAY	REV
SCALE: NO SCALE		SHEET 3 OF 3	

IT CLOSETS – HVAC DRAWINGS

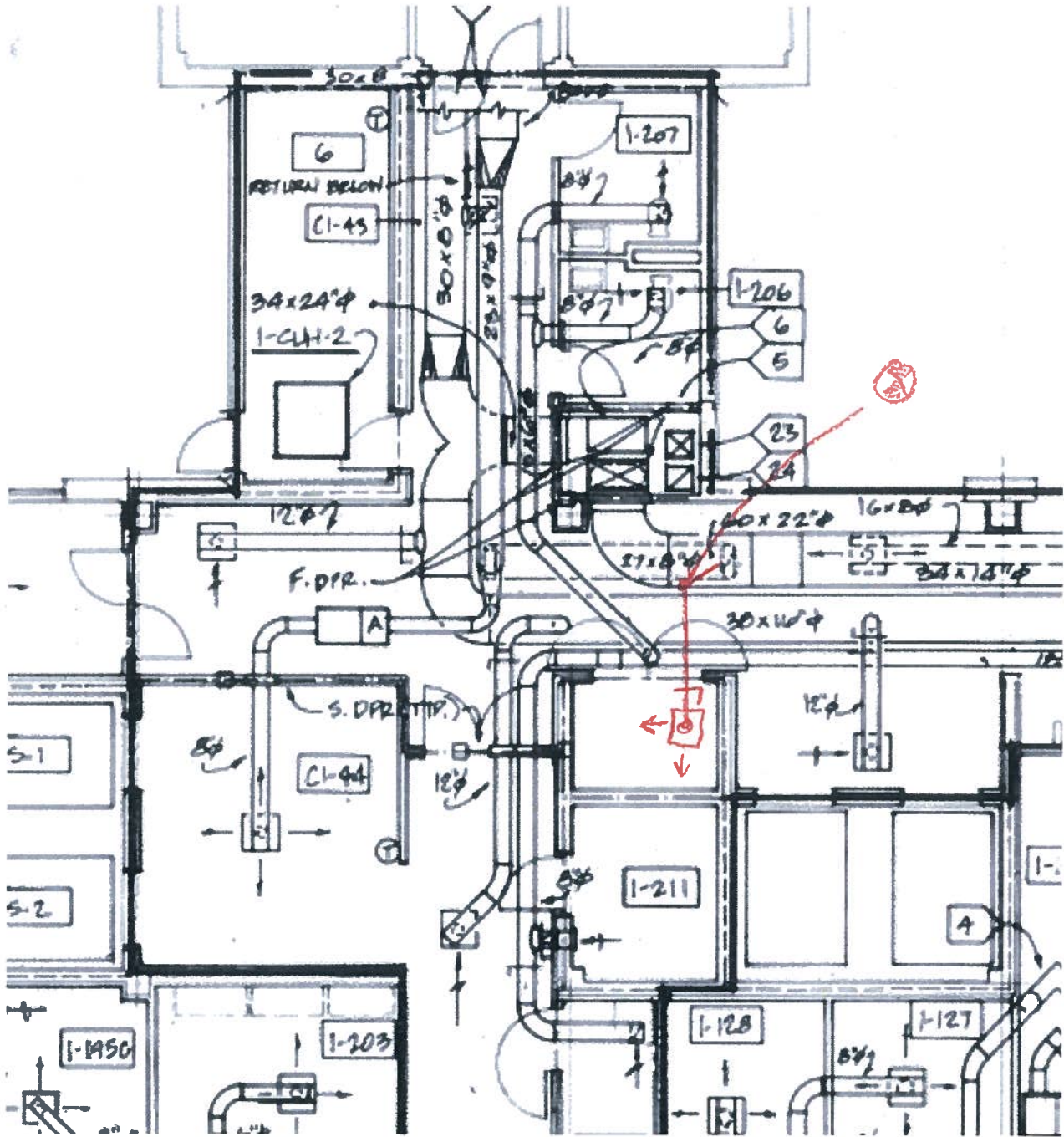
1. Room BL-70
2. Room B1-103
3. Room B1-112
4. Room C1-41
5. Room C3-73B

BL-70

Tap into existing medium pressure duct in hallway w/ 6" round tap. Run 6" dia duct into IT closet and install manual volume damper in space above closet. Provide 1" duct wrap insulation. Set initial flow to 250 cfm. Install 24" x 5" security louver 12" above bottom edge of door.

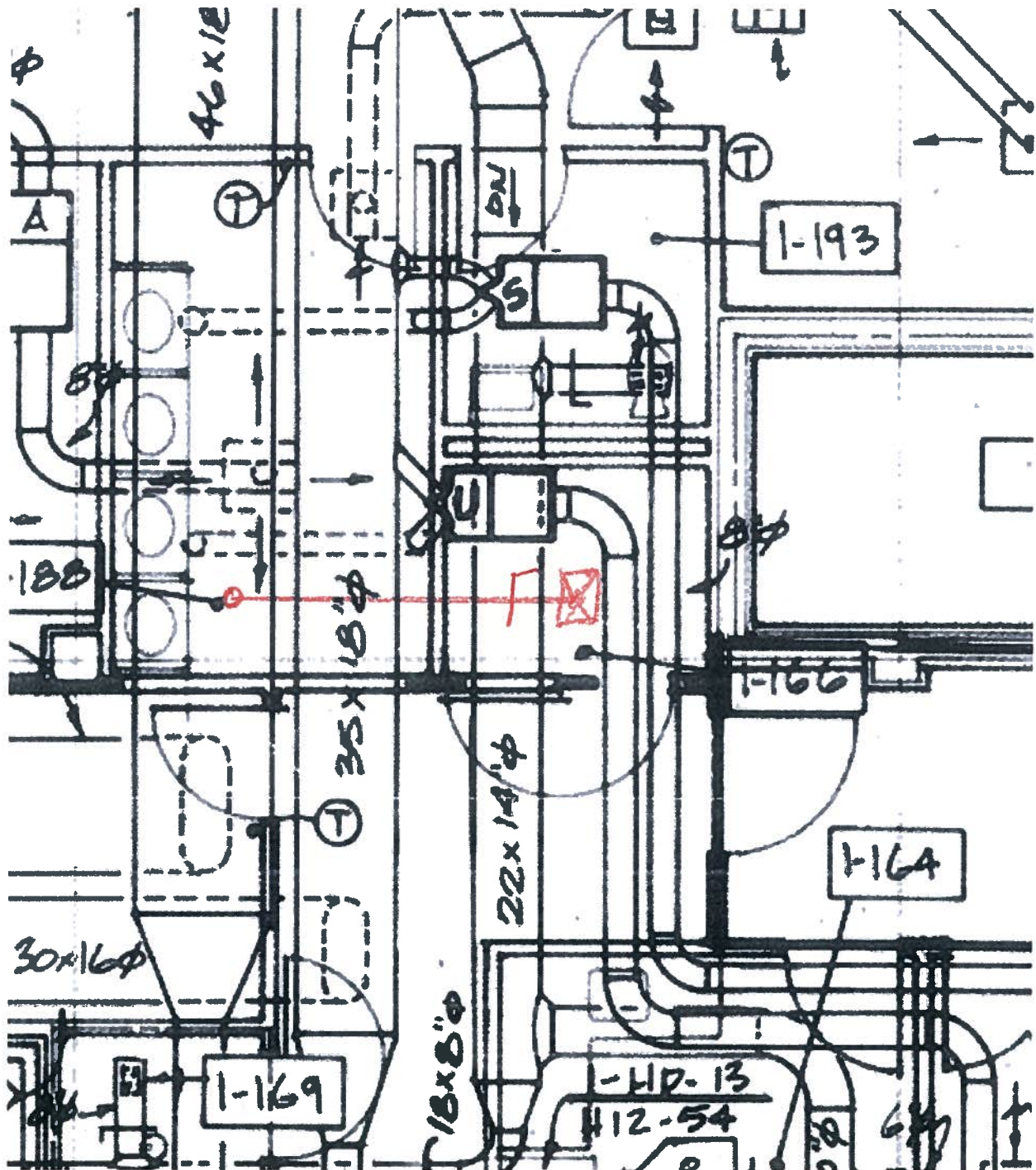


Tap into existing medium pressure duct in hallway w/ 6" round tap. Run 6" dia duct into IT closet and install manual volume damper in space above closet. Provide 1" duct wrap insulation. Set initial flow to 250 cfm. Install 24" x 5" security louver 12" above bottom edge of door.



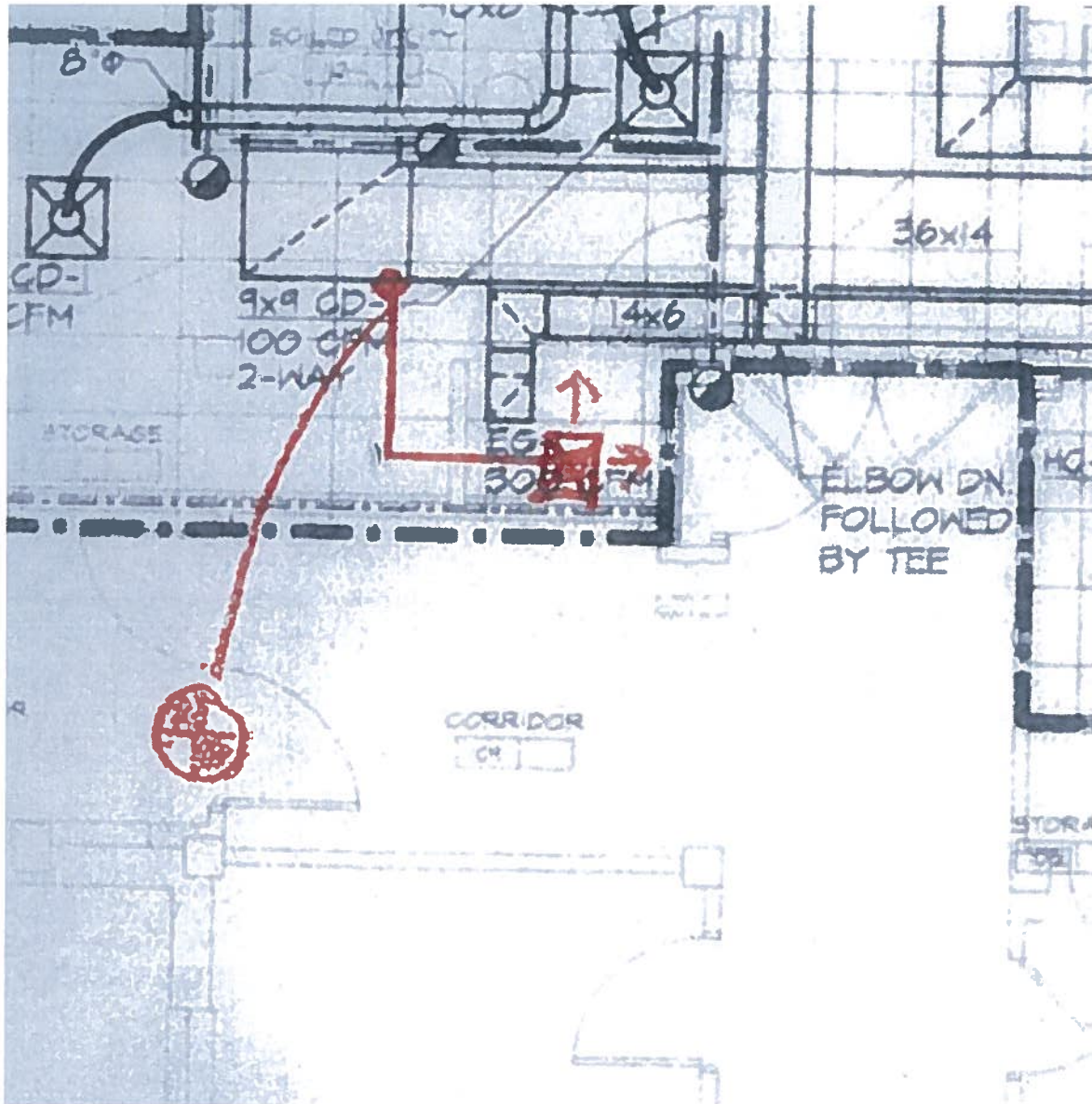
B1-112

Tap into existing medium pressure duct in hallway w/ 6" round tap. Run 6" dia duct into IT closet and install manual volume damper in space above closet. Provide 1" duct wrap insulation. Set initial flow to 250 cfm. Install 24" x 5" security louver 12" above bottom edge of door.



C1-41

Tap into existing medium pressure duct in storage room w/ 6" round tap. Run 6" dia duct into IT closet and install manual volume damper in space above closet. Provide 1" duct wrap insulation. Set initial flow to 250 cfm. Install 24" x 5" security louver 12" above bottom edge of door.



Tap into existing medium pressure duct in break room w/ 6" round tap. Run 6" dia duct into IT closet and install manual volume damper in space above closet. Provide 1" duct wrap insulation. Set initial flow to 250 cfm. Install 24" x 5" security louver 12" above bottom edge of door.

