

A three inches = one foot
B one and one half inches = one foot
C one inch = one foot
D three quarters inch = one foot
E one half inch = one foot
F one quarter inch = one foot
one eighth inch = one foot

GENERAL NOTES

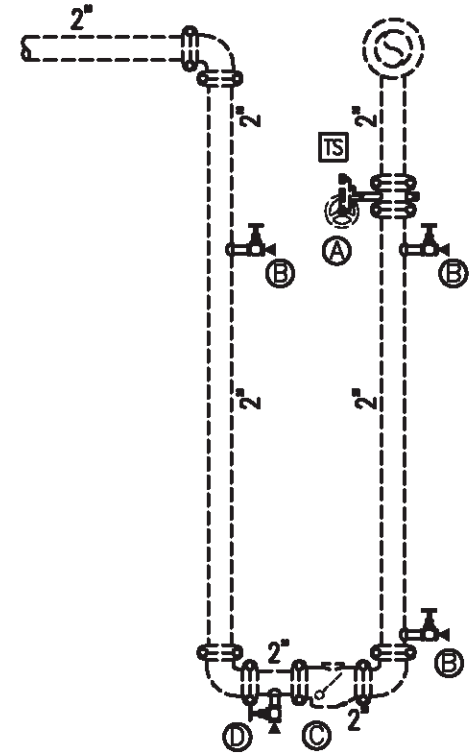
1. ALL CEILINGS OPEN TO STRUCTURE UNLESS OTHERWISE NOTED.
2. ALL COUPLINGS TO BE ZERO FLEX/RIGID UNLESS OTHERWISE NOTED AND/OR REQUIRED BY CODE.
3. PIPE ROUTING AND HEAD LOCATIONS ARE SCHEMATIC IN NATURE AND SHOWN FOR BIDDING PURPOSES. CONTRACTOR IS RESPONSIBLE FOR FINAL PIPE ROUTING AND HEAD LOCATIONS.
4. EXISTING SPRINKLER PIPE NOTED:-----
5. NEW SPRINKLER PIPE NOTED:-----
6. ALL ROOMS ARE CLASSIFIED AS LIGHT HAZARD OCCUPANCY (0.10 GPM/SQ FT OVER REMOTE AREA - 100 GPM HOSE) PER NFPA 13 UNLESS OTHERWISE NOTED WITH SYMBOLS BELOW. SEE REMOTE AREA NOTES FOR REMOTE AREA MODIFICATIONS AS APPLICABLE.

(OHT) ORDINARY HAZARD GROUP 1 - 0.15 GPM/SQ FT OVER REMOTE AREA - 250 GPM HOSE

PLAN KEY NOTES

- ◇ REMOVE EXISTING CAP AND EXTEND MAIN AS SHOWN.
- ◇ INSTALL NEW MECH. TEE AND ROUTE PIPE UNDER NEW OVERHEAD DOOR.

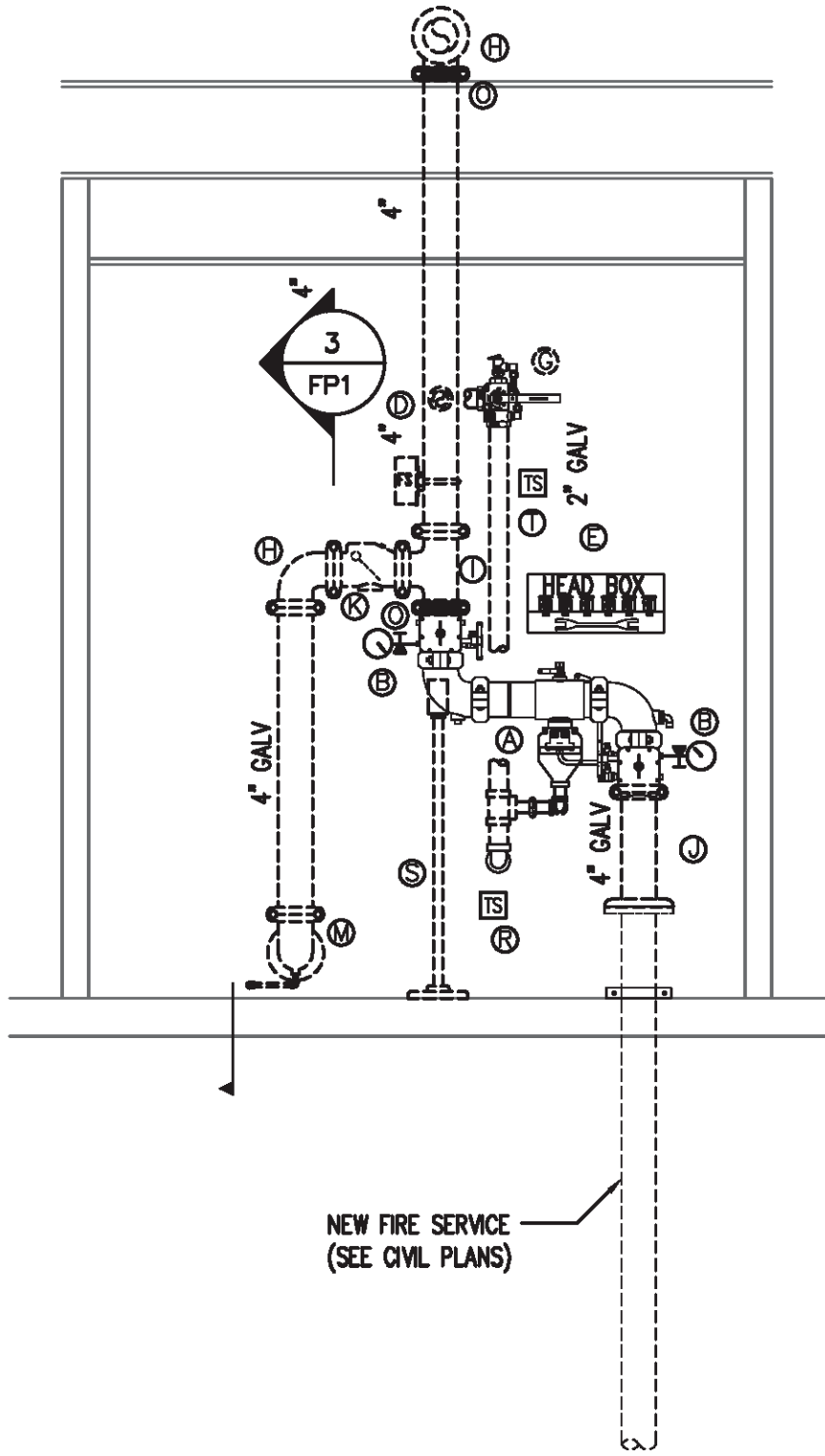
NOTE:
CONTRACTOR TO CONFIRM ALL
EXISTING PIPE SIZES AND ROUTING.



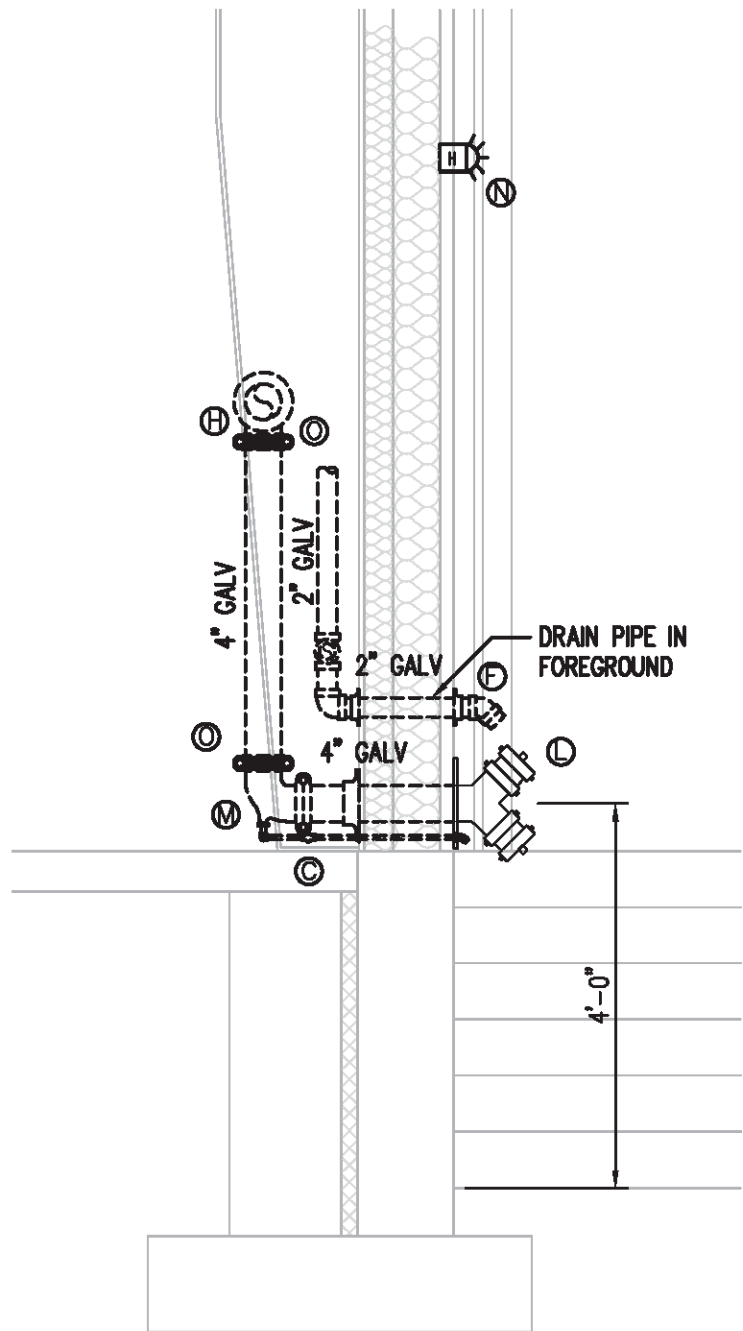
EXISTING ANTIFREEZE LEGEND

- ① 2 1/2" BUTTERFLY VALVE WITH BUILT-IN TAMPER SWITCH
- ② 1/2x-4 NIPPLE, 1/2" GLOBE VALVE AND 1/2 PLUG - "TEST CONNECTION"
- ③ 2 1/2" GROOVED CHECK VALVE WITH 1/32" HOLE IN CLAPPER
- ④ 1/2x-4 NIPPLE, 1/2" GLOBE VALVE - VALVE FOR PUMPED FILL AND DRAINAGE

1 EXISTING WAREHOUSE ANTIFREEZE LOOP
FP1.2 1/2" = 1'-0"



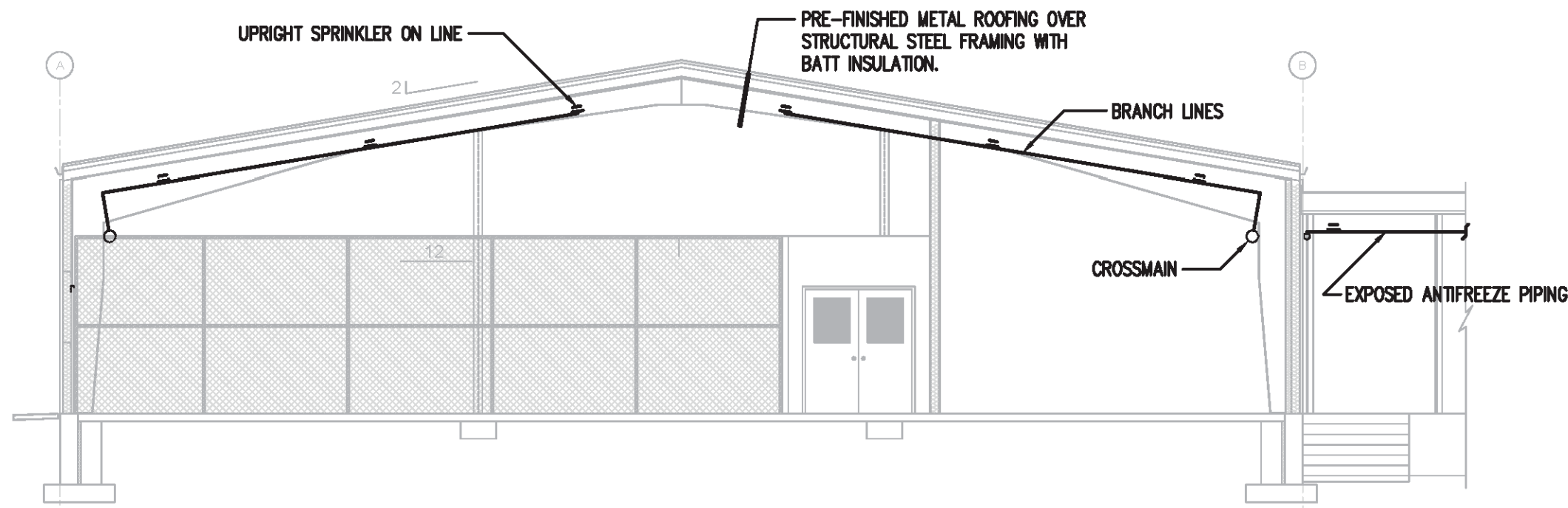
2 WAREHOUSE RISER DETAIL
FP1.2 1/2" = 1'-0"



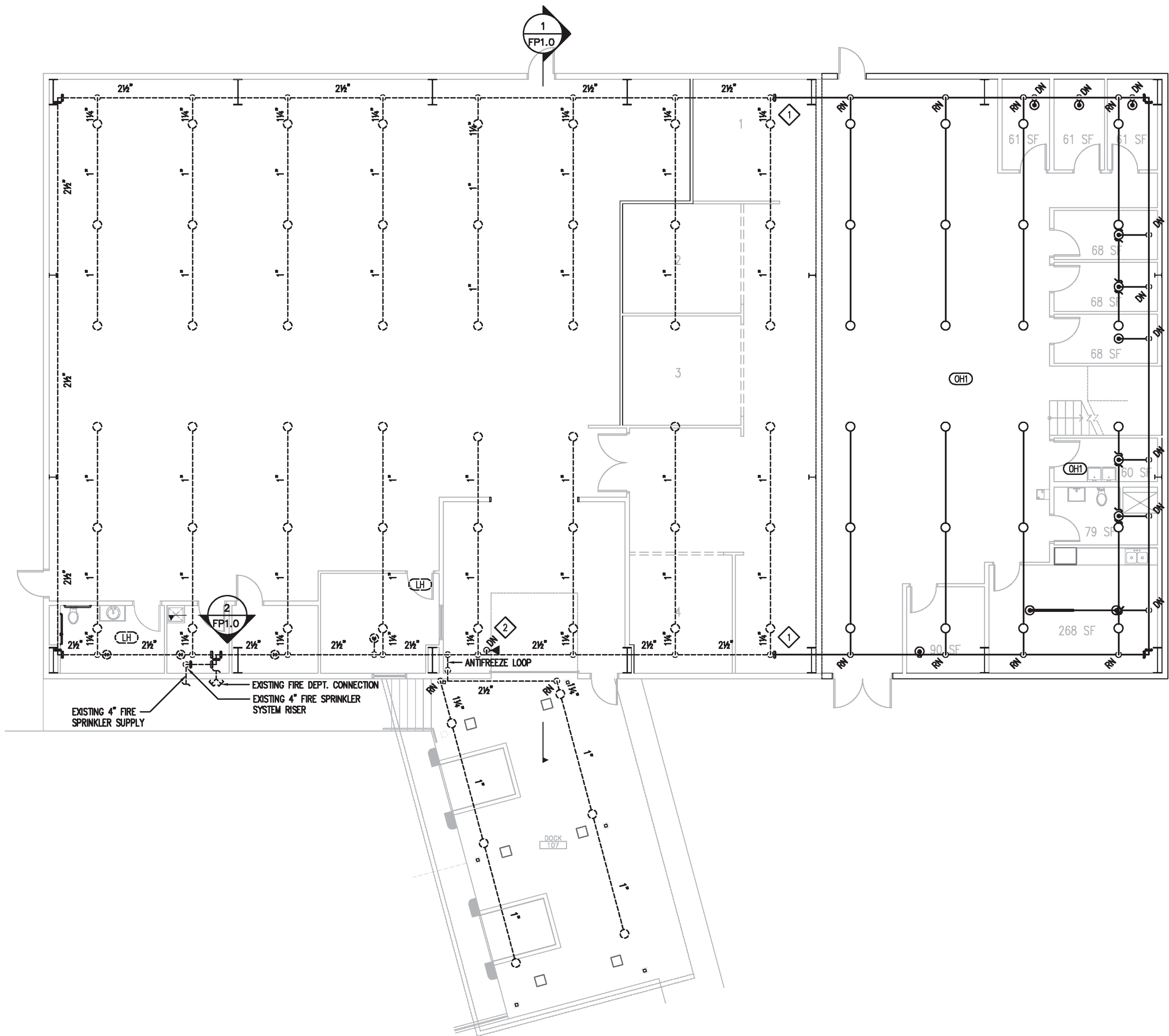
3 WAREHOUSE FDC DETAIL
FP1.2 1/2" = 1'-0"

EXISTING WAREHOUSE RISER LEGEND

- ① REDUCED PRESSURE ZONE ASSEMBLY WITH GROOVED BUTTERFLY VALVES AND BUILT-IN TAMPER SWITCHES
- ② 1/2x1/4 GALV HEX BUSH, 1/2x-3 GALV NIPPLE, 1/2" 3-WAY VALVE, 1/2" WATER GAUGE, 1/2" PLUG
- ③ 1/2" BALL DRIP PIPED TO EXTERIOR
- ④ 4" FLOW SWITCH
- ⑤ SPARE HEAD CABINET (12) WITH WRENCH. MINIMUM OF (2) EACH STYLE HEAD USED.
- ⑥ GMI 45', 2GALVx-2 TOE, (2) 2" SOLID GALV WALL PLATES
- ⑦ 2" TEST-AND-DRAIN VALVE WITH PRESSURE RELIEF VALVE
- ⑧ 4" GROOVED ELL
- ⑨ 4" GROOVED TEE
- ⑩ 4" GROOVED FLANGE
- ⑪ 4" GROOVED CHECK VALVE
- ⑫ 4x2 1/2x2 1/2 FDC W/ PLUGS & CHAINS, ID PLATE, SOLID GALV WALL PLATE.
- ⑬ GROOVED ELL, W/ 1/4x1/4 GALV HEX BUSHING
- ⑭ EXTERIOR HORN/STROBE ASSEMBLY FOR LOCAL ALARM OF WATER FLOW SWITCHES
- ⑮ 4" FLEX COUPLING
- ⑯ NOT USED
- ⑰ 1" SCREWED UNION
- ⑱ TAMPER SWITCH FOR OS&Y VALVE
- ⑳ 2" DIAMETER PIPESTAND



4 FIRE SPRINKLER WAREHOUSE REFERENCE SECTION
FP1.2 1/8" = 1'-0"



A NEW WAREHOUSE ADDITION - FIRE SPRINKLER PLAN
FP1.2 1/8" = 1'-0"

CONSTRUCTION DOCUMENTS

Revisions	Date	CONSULTANTS: Sprinkler Technology Design, Inc. 2011 North 22nd Avenue Suite #4 Bozeman, MT 59718 Phone 406-582-1938 Fax 406-585-8332 Email info@sprinklertechnologydesign.com	STAMP: 	ARCHITECT/ENGINEERS: Gray & Lockett architecture & engineering Gray & Lockett Architecture and Engineering, PLLC A Service-Disabled Veteran-Owned Small Business 1510 Wind River Drive, SE Huntsville, AL 35802-3939 (256) 527-0342 (C)	Drawing Title WAREHOUSE ADDITION FIRE SPRINKLER PLANS	Approved Project Director CONSTRUCTION ENGINEER	Project Title OEF/OIF CLINICAL EXPANSION			Project Number VA-259-12-C-0262 Building Number 170 Drawing Number FP1.2 Dwg. 60 of 75	Office of Construction and Facilities Management
							Location FORT HARRISON, MONTANA	Date 12-11-2013	Checked JAA	Drawn RWB	