

one eighth inch = one foot

0 4 8 16

one quarter inch = one foot

0 4 8

three eighths inch = one foot

0 4 8

one half inch = one foot

0 4

three quarters inch = one foot

0 2

one inch = one foot

0 6"

one and one half inches = one foot

0 6"

two inches = one foot


0 6"

three inches = one foot

0 6"

	FIRE-RATED, SMOKE BARRIER LINE, 1 HOUR		ELEVATION INDICATOR, EXTERIOR
	FIRE-RATED, SMOKE BARRIER LINE, 2 HOUR		ELEVATION INDICATOR, INTERIOR, MULTIPLE VIEW
	FIRE-RATED, SMOKE BARRIER LINE, 3 HOUR		ELEVATION INDICATOR, INTERIOR, SINGLE VIEW
	FIRE-RATED, SMOKE BARRIER LINE, 1 HOUR (EXISTING)		BUILDING SECTION INDICATOR
	FIRE-RATED, SMOKE BARRIER LINE, 2 HOUR (EXISTING)		DETAIL INDICATOR
	FIRE-RATED, SMOKE BARRIER LINE, 3 HOUR (EXISTING)		FURNITURE, FIXTURE, & EQUIPMENT INDICATOR
	HIDDEN FEATURES LINE		GRAPHIC SCALE, $\frac{1}{8}$ "=1'-0"
	NEW LINE		ROOM NAME AND NUMBER
	SMOKE BARRIER LINE		COLUMN GRID
	BREAK, STRAIGHT (SEE SECTION INDICATORS, BUILDING, WITH BREAK STANDARDS)		KEYNOTE
	DETAIL INDICATOR		WALL OR PARTITION TYPE
	DETAIL INDICATOR		FIRE EXTINGUISHER CABINET
	DETAIL INDICATOR FOR SMALL CONDITIONS		CORNER GUARD
	DIMENSION LINE		NORTH ARROW
	DRAWING BLOCK TITLE, TYPICAL		MATCHLINE
			WINDOW TAG

THIS LEGEND IS COMPRISED OF STANDARD SYMBOLS AND ABBREVIATIONS AND APPLIES TO THIS SET OF DRAWINGS TO THE EXTENT APPLICABLE.

		CONSULTANTS:		<div><div>5 Feb 2014</div><div>BLAKE VAN GANSEBEEK</div><div>LICENSE</div><div>No 73599</div><div>STATE OF</div><div>FLORIDA</div><div>PROFESSIONAL ENGINEER</div><div>11/11/11</div></div>		ARCHITECT/ENGINEERS:		<div><div>PARADIGM</div><div>ENGINEERS AND CONSTRUCTORS</div><div>9 Oak Drive - Ocala, FL 34472 - PH: 502.339.8511 - <a href="http://www.paradigmusa.com">www.paradigmusa.com</a></div></div>		<div>Drawing Title</div> <div>ARCHITECTURAL SYMBOLS AND LEGENDS</div> <div>Approved Project Director</div>		<div>Project Title</div> <div>RENOVATE REHABILITATIVE MEDICINE</div> <div>Location LAKE CITY VA MEDICAL CENTER 699 S. MARION AVE, LAKE CITY, FL 32025</div> <div>Date 02-06-14</div> <div>Checked JCP</div> <div>Drawn DML</div>		<div>Project Number</div> <div>573AA-12-101</div> <div>Building Number</div> <div>64</div> <div>Drawing Number</div> <div>A-001</div>		<div>Office of Construction and Facilities Management</div> <div> Department of Veterans Affairs</div>	
Revisions:		Date															



three inches = one foot  
one and one half inches = one foot  
one inch = one foot  
three quarters inch = one foot  
one half inch = one foot  
three eighths inch = one foot  
one quarter inch = one foot  
one eighth inch = one foot

DEMOLITION PLAN LEGEND

- EXISTING PARTITION TO REMAIN  
EXISTING PARTITION TO BE REMOVED  
EXISTING DOOR & FRAME TO REMAIN  
EXISTING DOOR, FRAME & PARTITION TO BE REMOVED  
EXISTING DOOR & HARDWARE TO BE REMOVED  
TEMPORARY DUSTPROOF PARTITION  
EXISTING MILLWORK TO REMAIN  
EXISTING WINDOW TO REMAIN  
EXISTING FIXTURES TO REMAIN  
AREA NOT IN CONTRACT

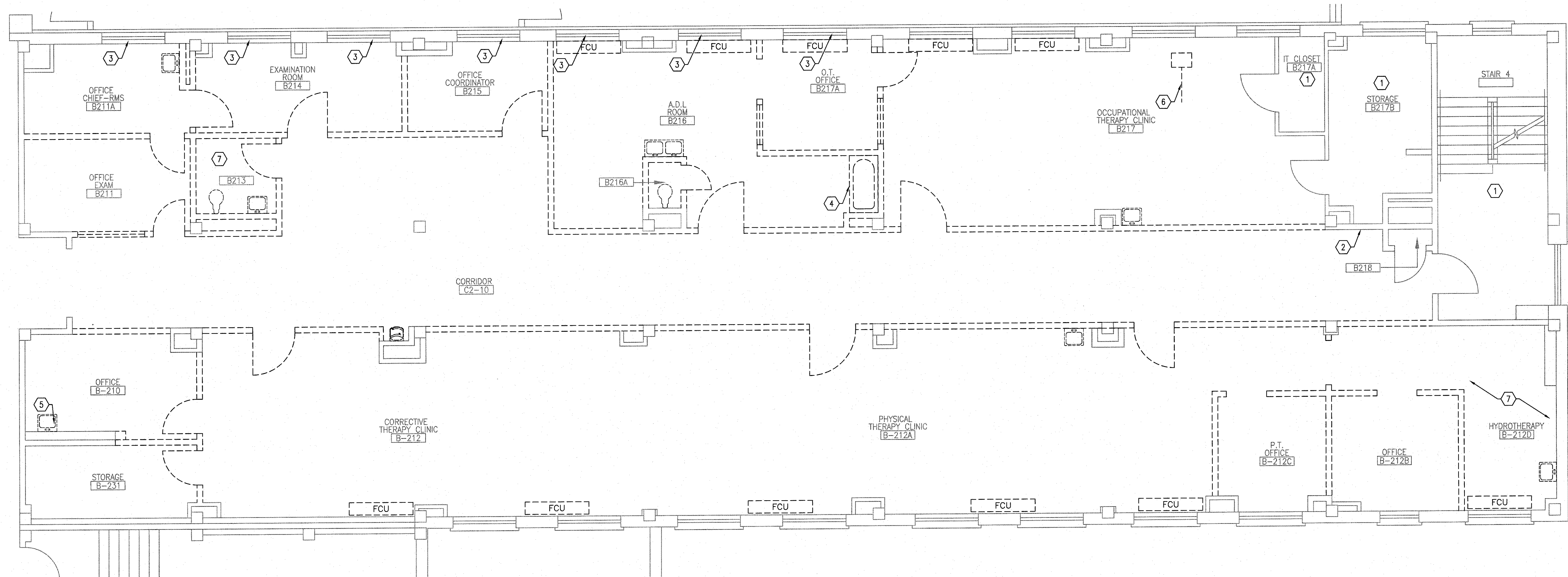
NOTE: ALL SYMBOLS MAY NOT BE USED

KEY NOTES

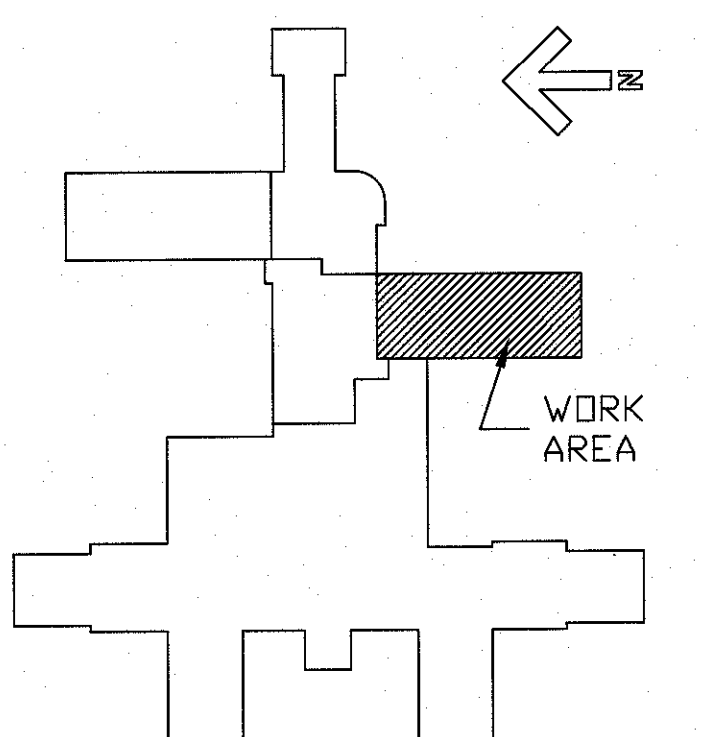
- NO WORK IN THIS ROOM.
- EXISTING FIRE EXTINGUISHER TO BE SALVAGED. STROBE LIGHT TO REMAIN.
- EXISTING WINDOW TREATMENT TO REMAIN. PROVIDE DUST BARRIER DURING CONSTRUCTION.
- TUB TO BE SALVAGED FOR RE-USE.
- REMOVE EXISTING PIPING BACK TO SOURCE AND PATCH WALL.
- SALVAGE PATIENT LIFT FOR RE-USE.
- REMOVE CERAMIC TILE AND PREPARE FLOOR FOR NEW FINISHES.

DEMOLITION PLAN NOTES

- THESE DOCUMENTS WERE PREPARED FROM DRAWINGS PROVIDED BY THE VA AND ON-SITE OBSERVATIONS. SHOULD SITE CONDITIONS DIFFER FROM WHAT IS INDICATED FROM THESE DOCUMENTS, NOTIFY THE CONTACTING OFFICER'S REPRESENTATIVE AT ONCE FOR CLARIFICATION.
- REFER TO SHEET 1.A-001 FOR LEGEND, ABBREVIATIONS, AND OTHER GENERAL NOTES RELATED TO THIS PROJECT.
- SEE SHEET 1.GC101 FOR PHASING INFORMATION.
- REFER TO MECHANICAL, ELECTRICAL, AND PLUMBING SHEETS FOR SPECIFIC DEMOLITION NOTES FOR OTHER THAN GENERAL DEMOLITION. PERFORM DAILY CLEANUP, PROTECT ALL AREAS TO REMAIN FORM DAMAGE.
- 70% OF CONSTRUCTION WASTE IS TO BE DIVERTED FROM A LANDFILL.
- ALL SALVAGED MATERIAL IS TO BE TURNED OVER TO THE V.A. UNLESS NOTED OTHERWISE.
- ASBESTOS ABATEMENT IS INCLUDED IN THIS PROJECT. PLEASE REFER TO ASBESTOS ABATEMENT PLAN FOR LOCATIONS.



DEMOLITION PLAN  
1/4" = 1'-0"



FULLY SPRINKLERED  
BID DOCUMENTS

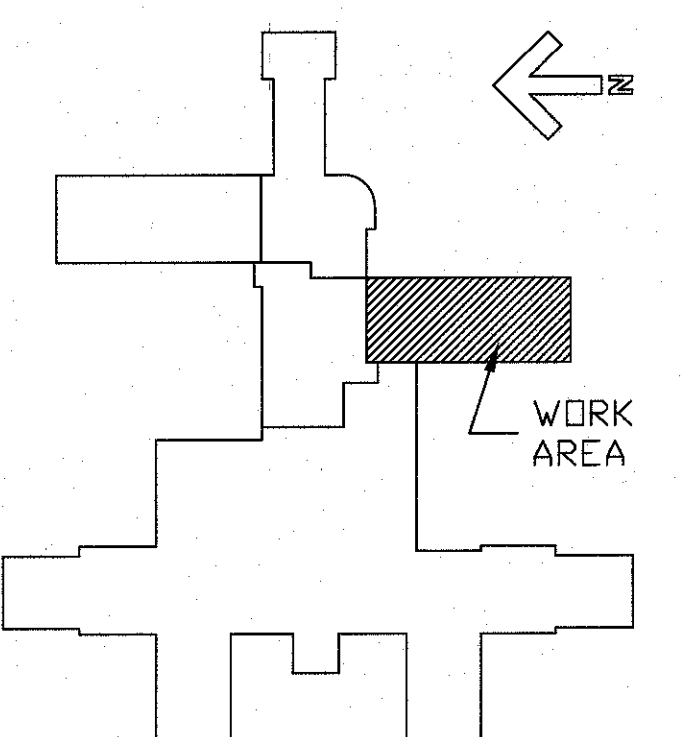
CONSULTANTS:			ARCHITECT/ENGINEERS:		Drawing Title DEMOLITION PLAN		Project Title RENOVATE REHABILITATIVE MEDICINE		Project Number 573A4-12-101		
					Approved Project Director		Location LAKE CITY VA MEDICAL CENTER 619 S. MARION AVE., LAKE CITY, FL 32025		Building Number 64		
Revisions		Date		9 Oak Drive - Ocala, FL 34472 - PH: 502.339.8511 - www.paradigmusa.com		Date 02-06-14		Checked JCP		Drawn DML, JPM	
								Drawing Number AD101		Office of Construction and Facilities Management Department of Veterans Affairs	





- ### GENERAL PLAN NOTES

- |   |
|---|
| A |
| B |
| C |
| D |
| E |
| F |



Department of  
Veterans Affairs

[illegible]

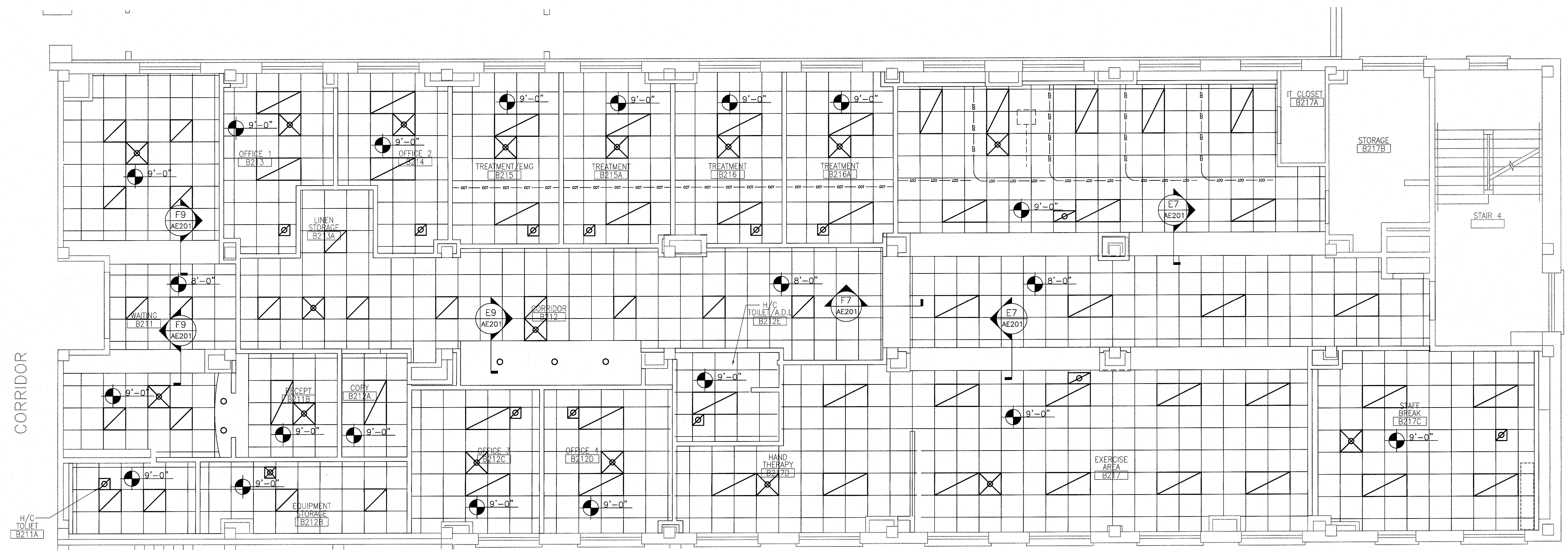




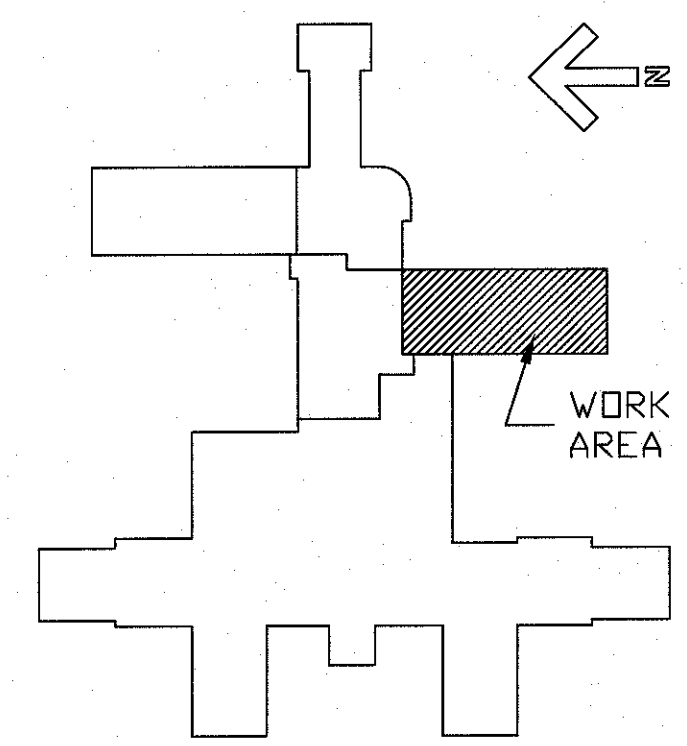


three inches = one foot  
one and one half inches = one foot  
one inch = one foot  
three quarters inch = one foot  
one half inch = one foot  
one quarter inch = one foot  
one eighth inch = one foot  
one quarter inch = one foot  
one eighth inch = one foot  
one eighth inch = one foot

- REFLECTED CEILING PLAN LEGEND**
- 2' X 4' ACOUSTICAL TILE CEILING
  - 2' X 2' ACOUSTICAL TILE CEILING
  - 2' X 2' FLUORESCENT LIGHT
  - 2' X 4' FLUORESCENT LIGHT
  - RECESSED CAN LIGHT
  - HVAC RETURN
  - HVAC SUPPLY
  - CURTAIN TRACT



**F1 REFLECTED CEILING PLAN**  
1/4" = 1'-0"



**FULLY SPRINKLERED  
BID DOCUMENTS**

Office of  
Construction  
and Facilities  
Management

Department of  
Veterans Affairs

<b>CONSULTANTS:</b>			<b>ARCHITECT/ENGINEERS:</b>		<b>Drawing Title</b> REFLECTED CEILING PLAN	<b>Project Title</b> RENOVATE REHABILITATIVE MEDICINE	<b>Project Number</b> 573A4-12-101
			 9 Oak Drive - Ocala, FL 34472 - Ph: 502.339.8511 - www.paradigmusa.com		<b>Approved Project Director</b>	<b>Location</b> LAKE CITY VA MEDICAL CENTER 69 S MARION AVE, LAKE CITY, FL 32025	<b>Building Number</b> 64
<b>Revisions</b>					<b>Date</b> 02-06-14	<b>Checked</b> JCP	<b>Drawn</b> SAT
<b>Date</b>							<b>Drawing Number</b> AE102



three inches = one foot  
one and one half inches = one foot  
one inch = one foot  
three quarters inch = one foot  
one half inch = one foot  
three eighths inch = one foot  
one eighth inch = one foot  
one quarter inch = one foot  
one eighth inch = one foot

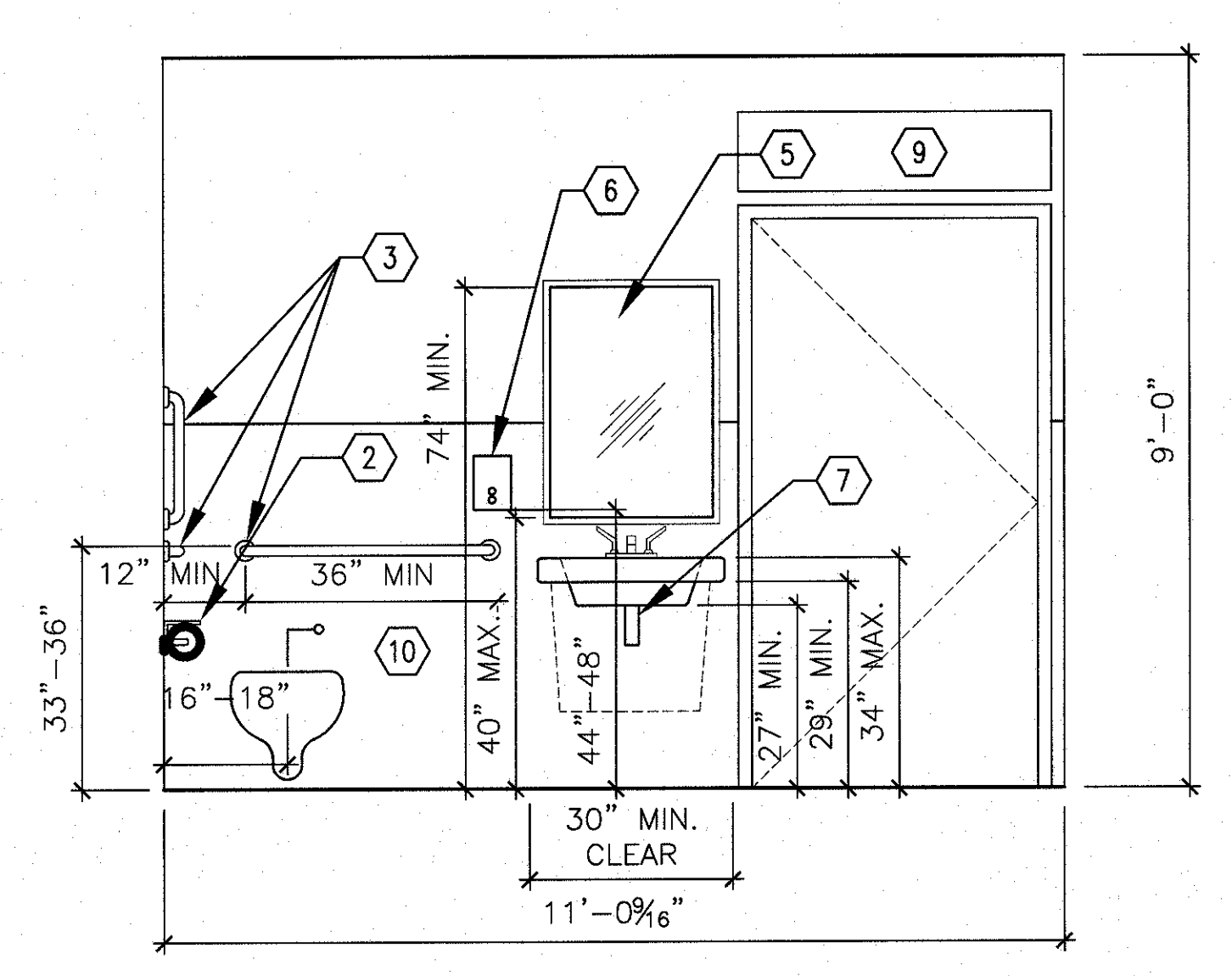
KEYNOTES

1

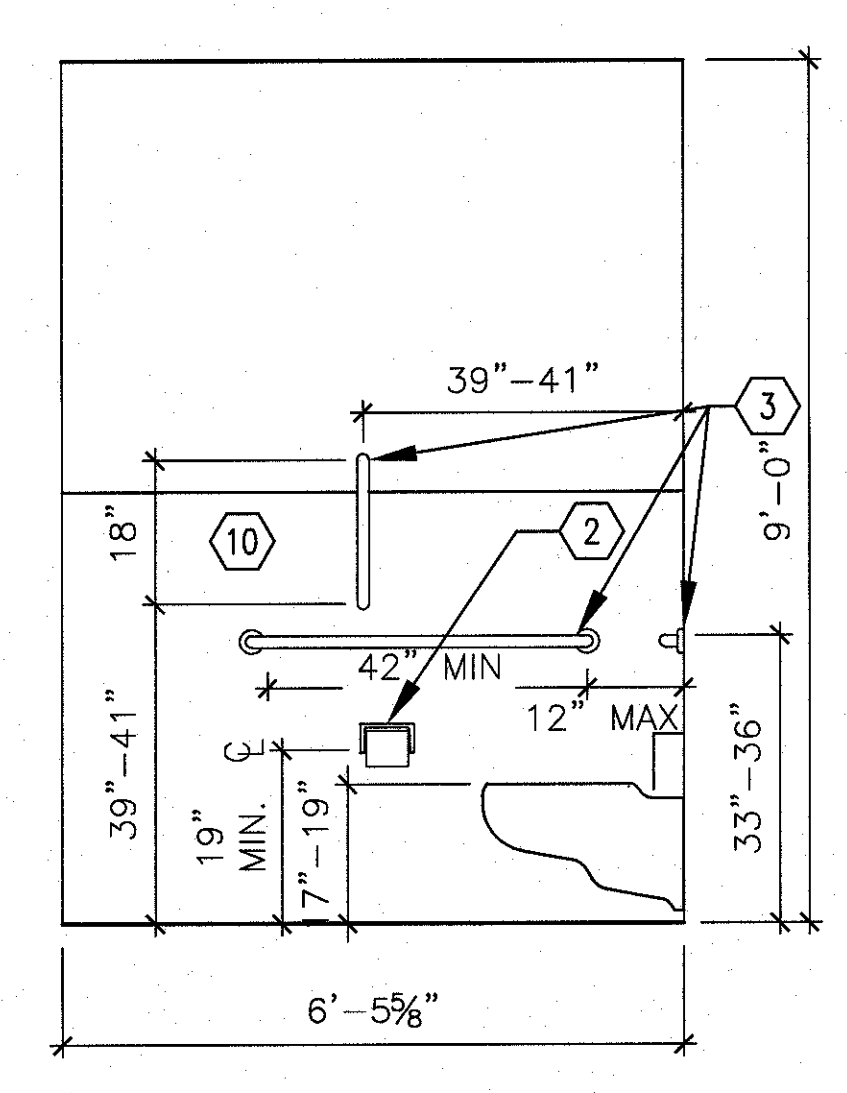
GENERAL NOTES

1. PAPER TOWEL DISPENSER / WASTE RECEPTACLE
2. TOILET TISSUE DISPENSER W/ STAINLESS STEEL SHELF
3. GRAB BAR
4. CLOTHES HOOK
5. METAL FRAMED MIRROR
6. SOAP DISPENSER
7. EXPOSED DRAINPIPE TO BE INSULATED
8. AUTO DOOR OPERATOR CONTROL
9. AUTO DOOR OPERATOR
10. TILE WAINSCOT

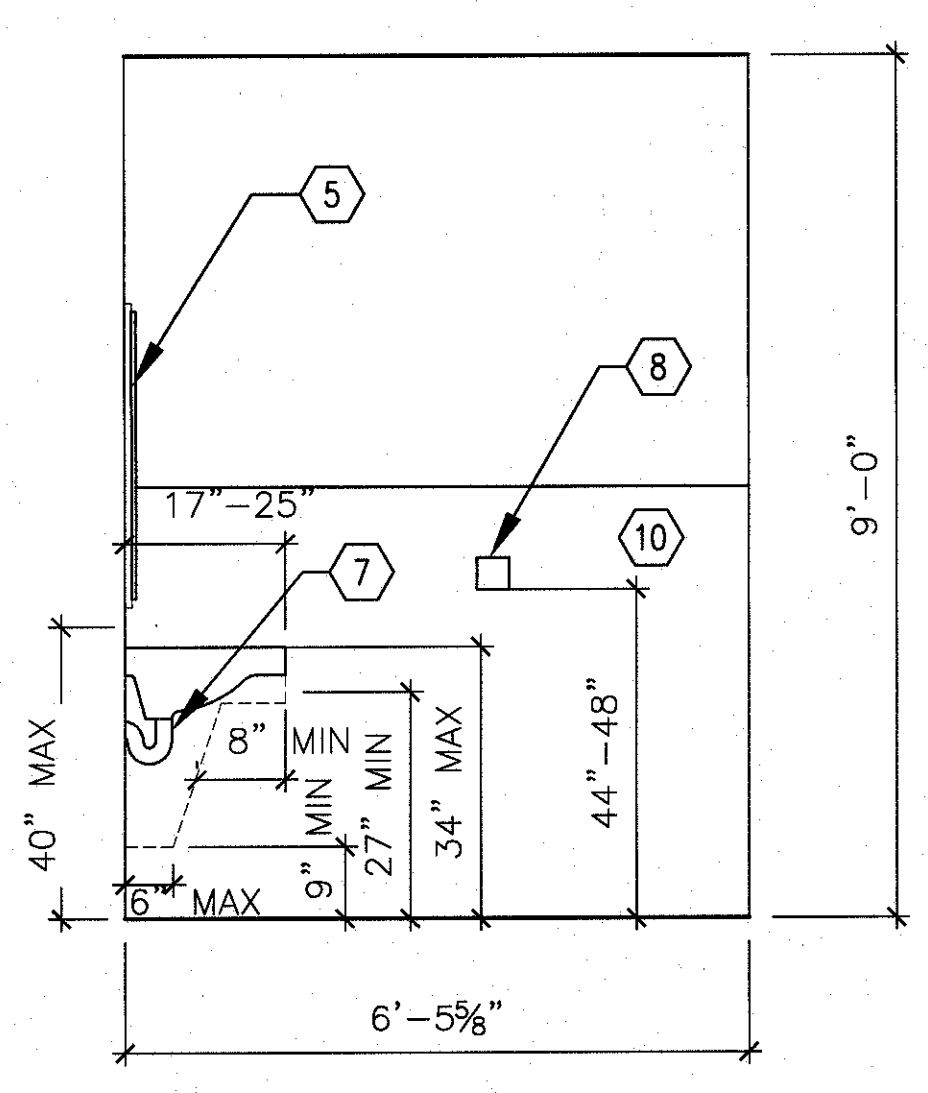
- A. SEE E1/ID601 FOR WALL FINISHES.
- B. PROVIDE BLOCKING AS NECESSARY



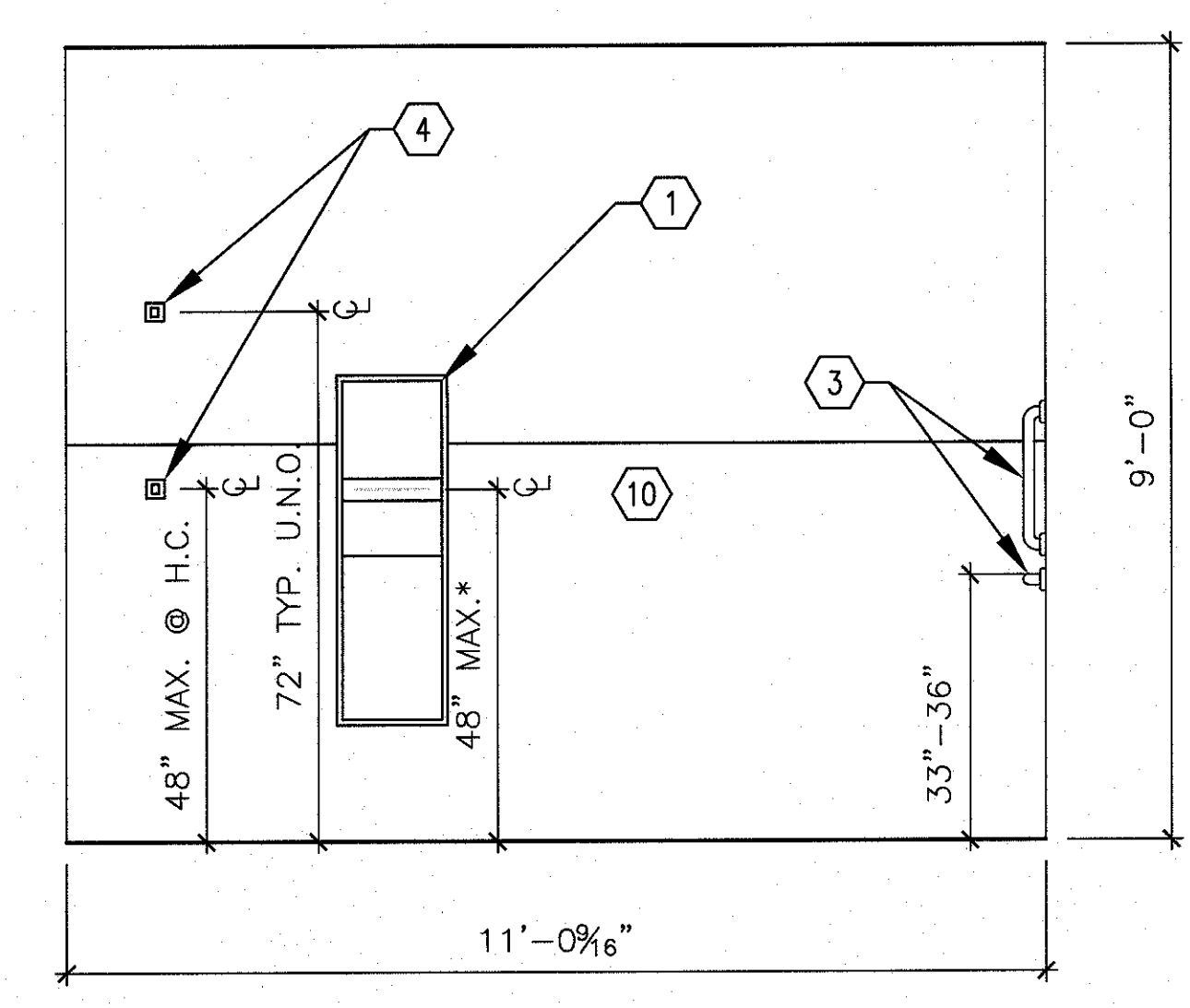
D1 BATHROOM ELEVATION  
1/2" = 1'-0"



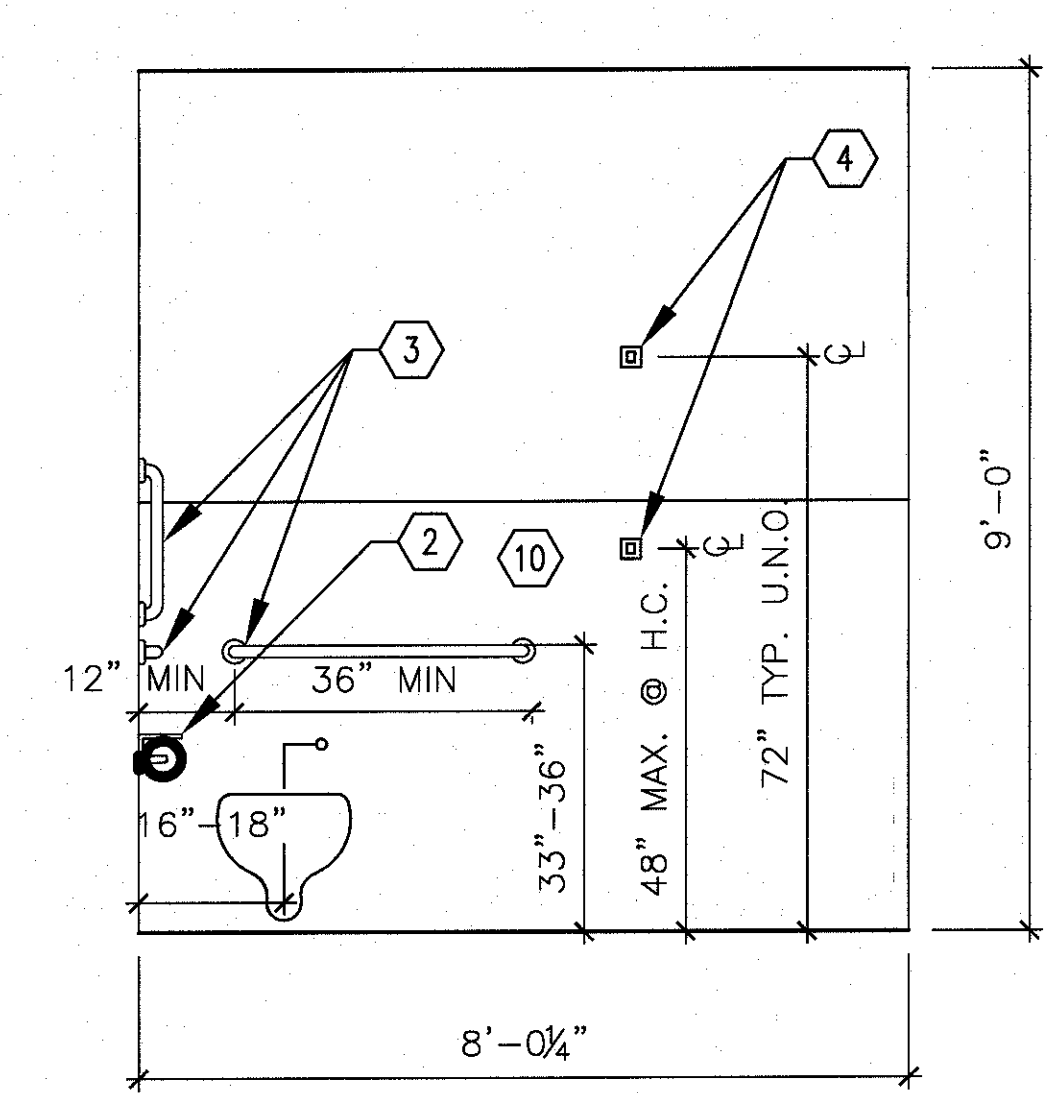
D3 BATHROOM ELEVATION  
1/2" = 1'-0"



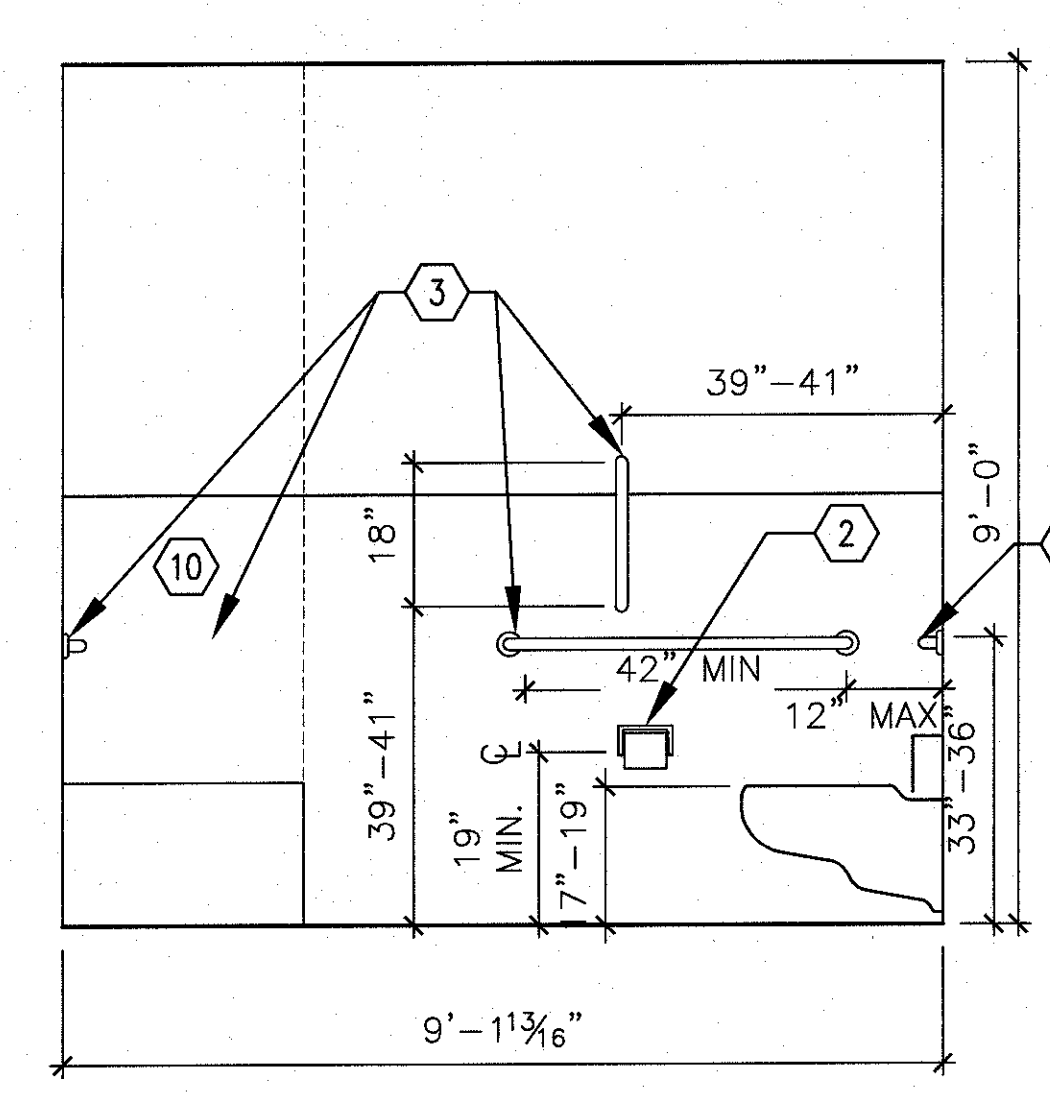
D4 BATHROOM ELEVATION  
1/2" = 1'-0"



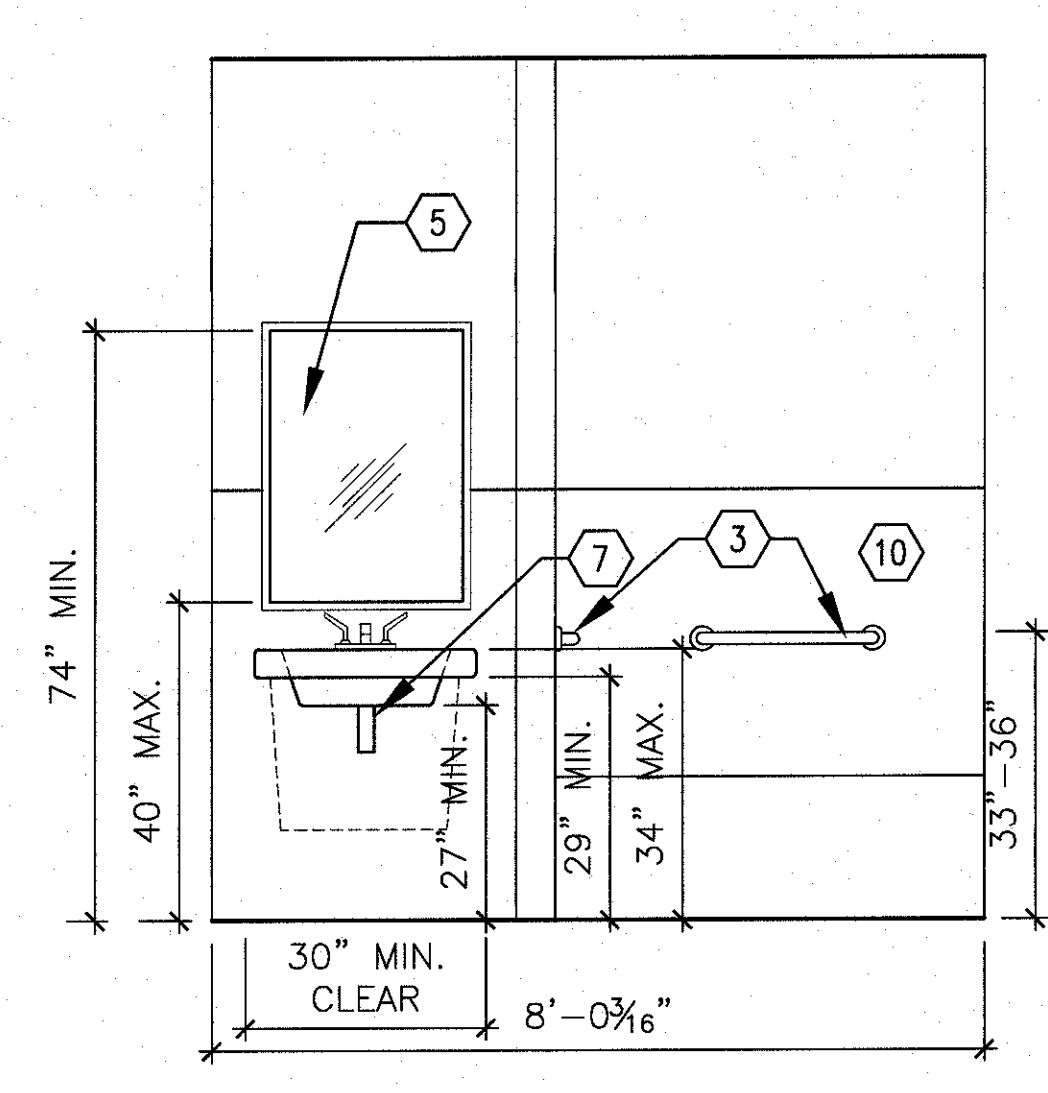
D6 BATHROOM ELEVATION  
1/2" = 1'-0"



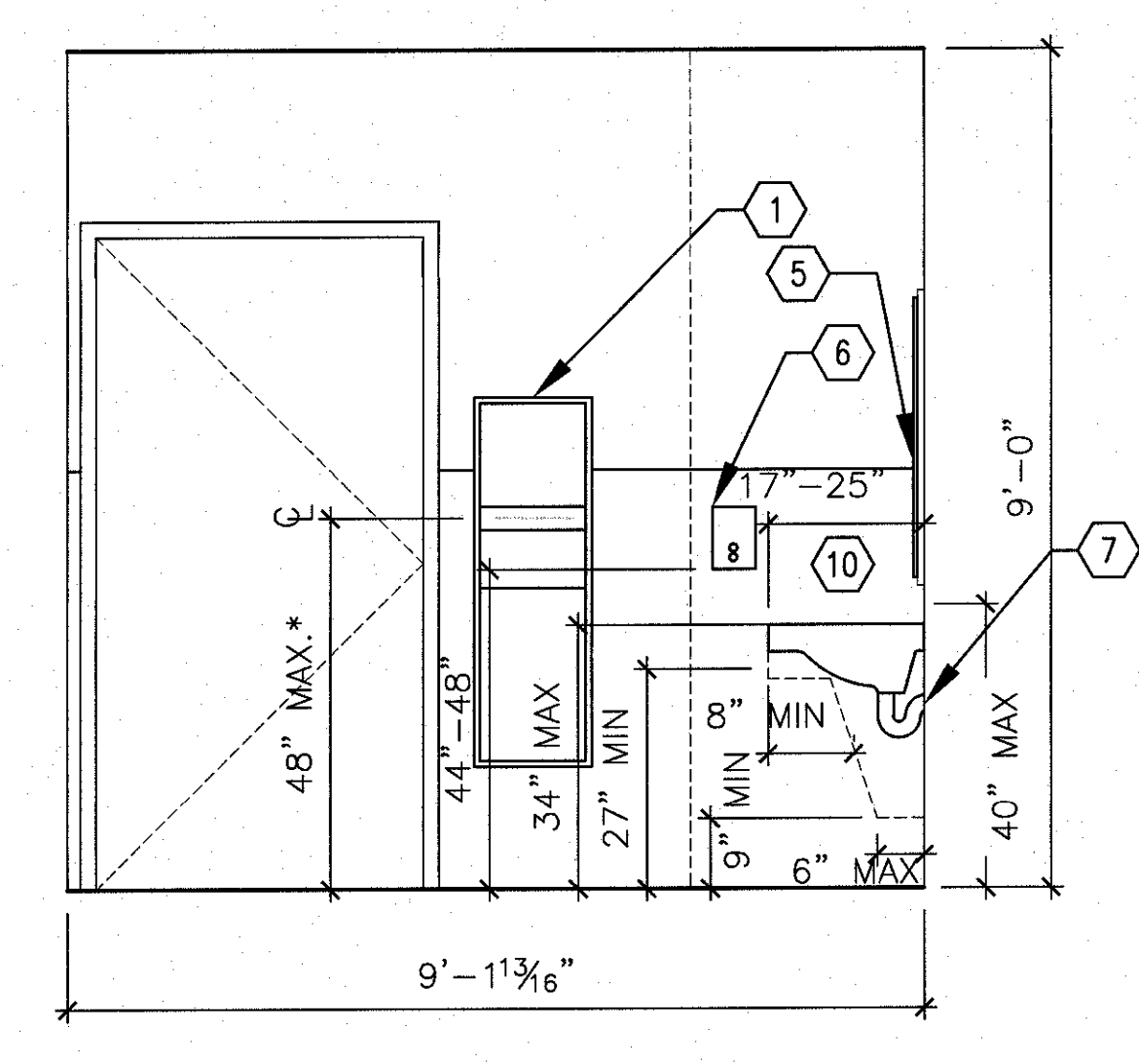
F1 BATHROOM ELEVATION  
1/2" = 1'-0"



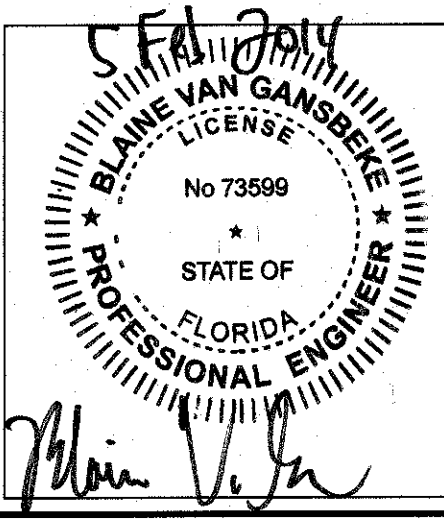
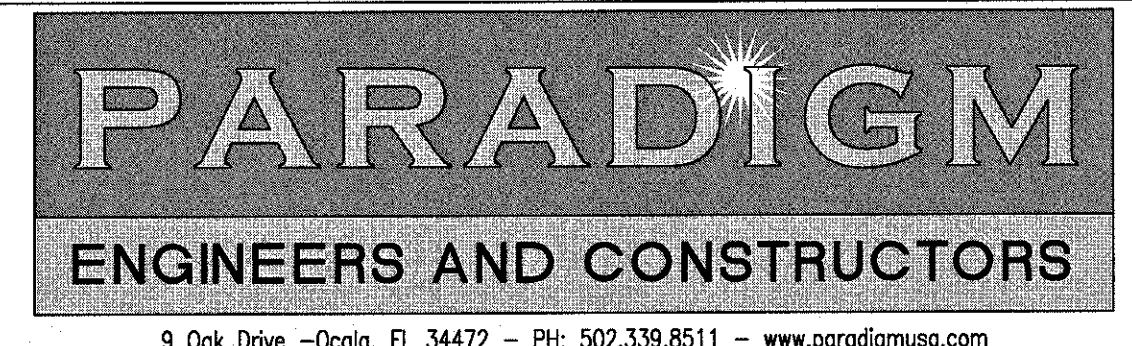
F3 BATHROOM ELEVATION  
1/2" = 1'-0"



F4 BATHROOM ELEVATION  
1/2" = 1'-0"



F6 BATHROOM ELEVATION  
1/2" = 1'-0"

<b>CONSULTANTS:</b>			<b>ARCHITECT/ENGINEERS:</b>  9 Oak Drive - Ocala, FL 34472 - PH: 502.339.8511 - www.paradigmusa.com	<b>Drawing Title</b> INTERIOR ELEVATIONS		<b>Project Title</b> RENOVATE REHABILITATIVE MEDICINE		<b>Project Number</b> 573A4-12-101	
<b>Revisions:</b>				<b>Approved Project Director</b>		<b>Location</b> LAKE CITY VA MEDICAL CENTER 69 S MARKIN AVE, LAKE CITY, FL 32025		<b>Building Number</b> 64	
<b>Date</b>				<b>Date</b> 02-06-14		<b>Checked</b> JCP		<b>Drawn</b> SAT	
								<b>Drawing Number</b> AE202	

VA FORM 08-6231

FULLY SPRINKLERED  
BID DOCUMENTS

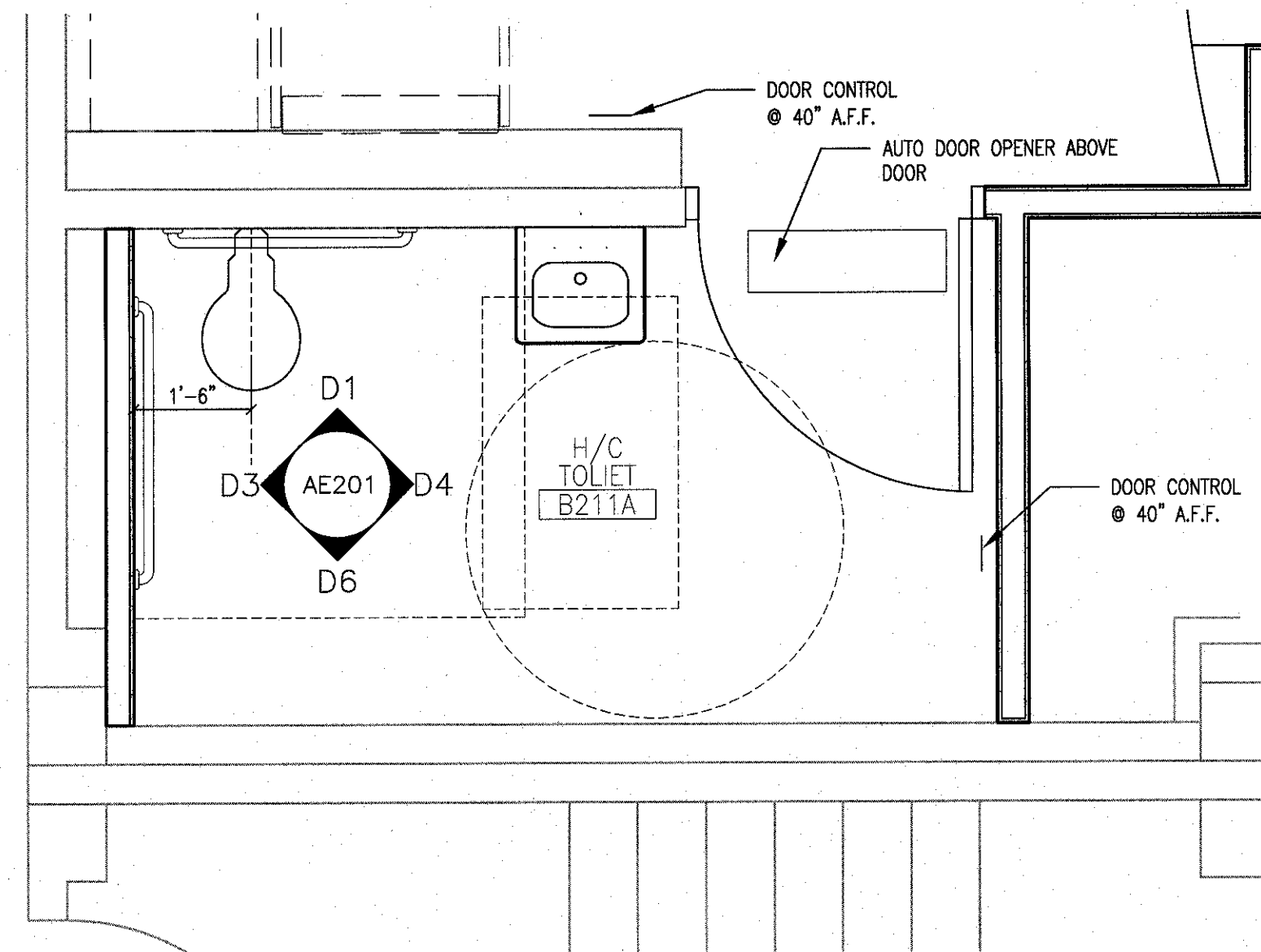
Office of  
Construction  
and Facilities  
Management

Department of  
Veterans Affairs

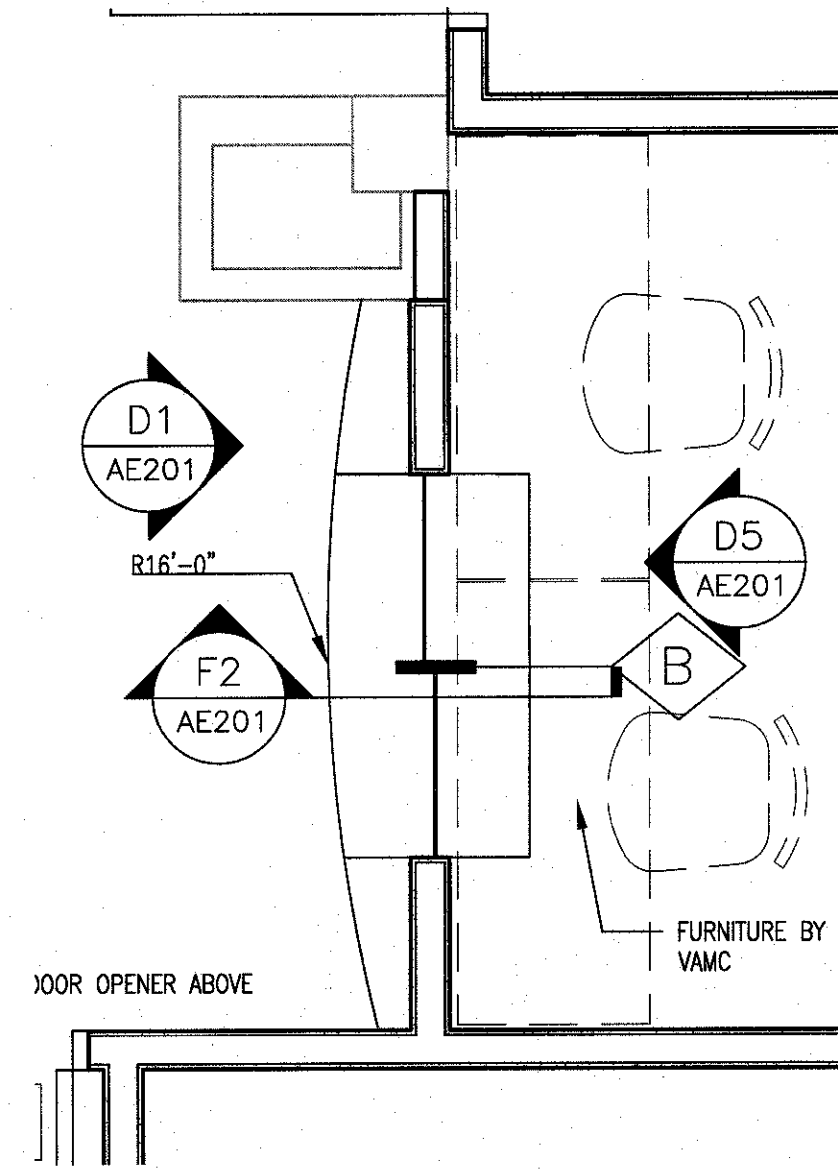


one eighth inch = one foot  
one quarter inch = one foot  
three eighths inch = one foot  
one half inch = one foot  
three quarters inch = one foot  
one inch = one foot  
one and one half inches = one foot  
two inches = one foot  
three inches = one foot

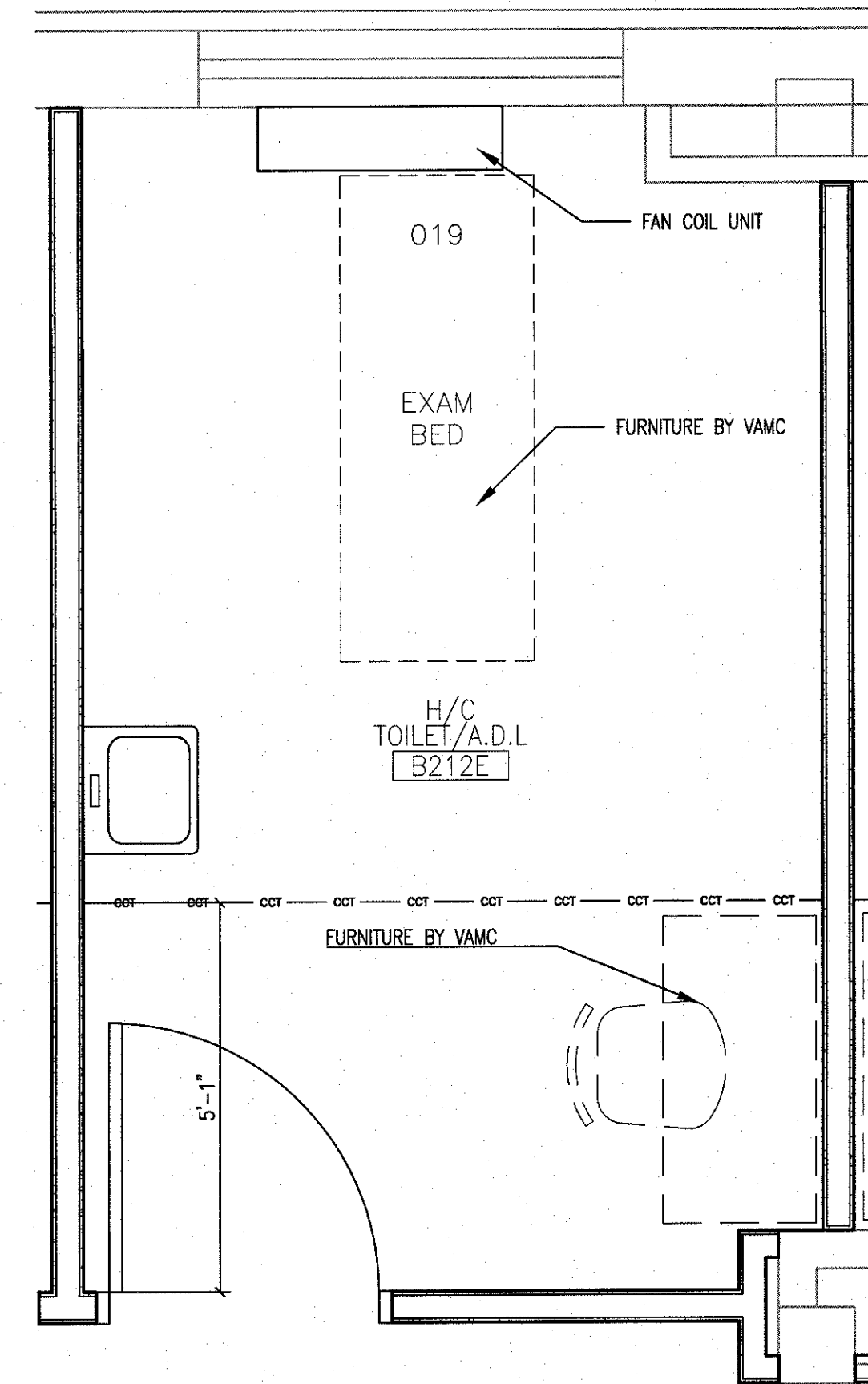
1 2 3 4 5 6 7 8 9



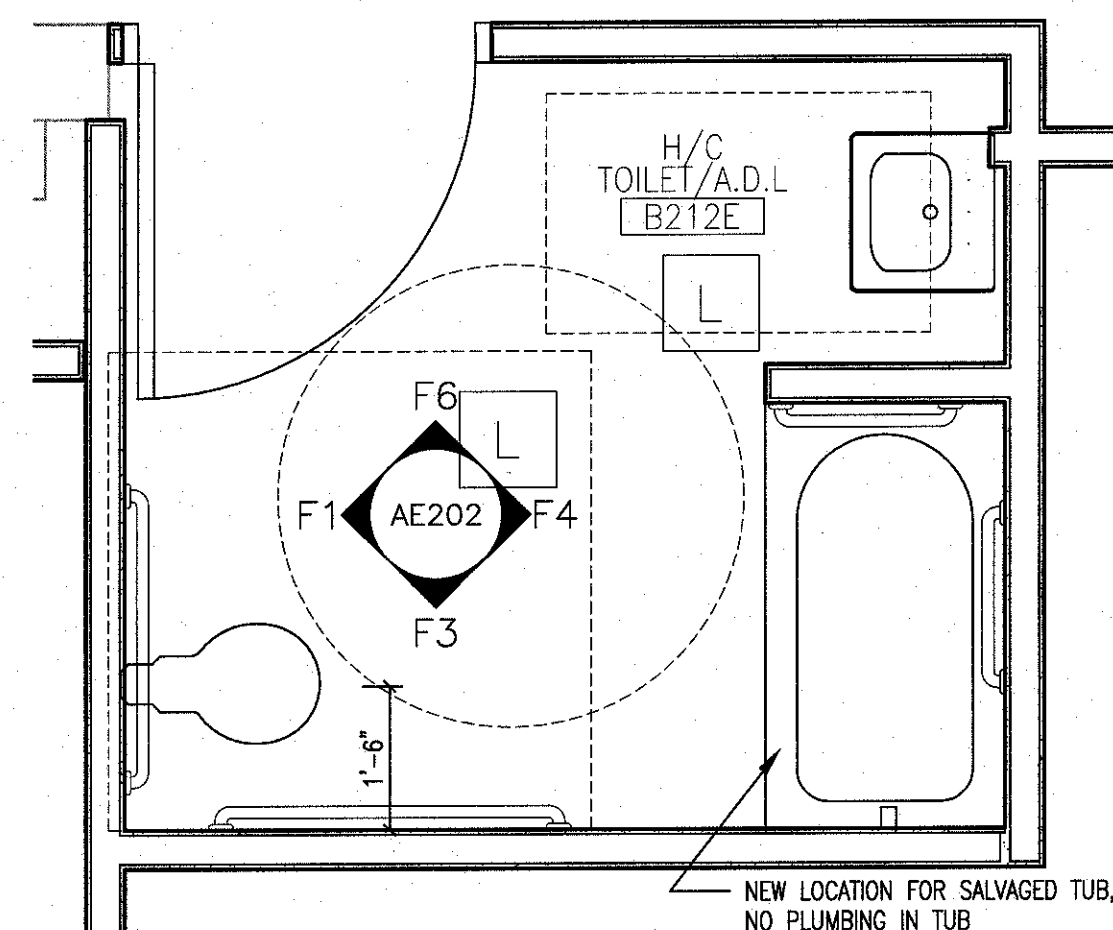
D1 RESTROOM PLAN  
1/2" = 1'-0"



D4 RECEPTION DESK PLAN  
1/2" = 1'-0"



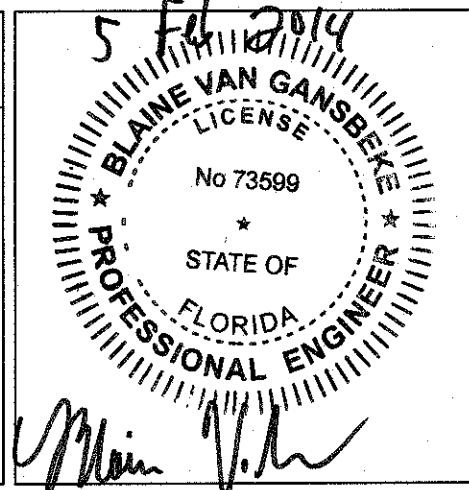
E6 TREATMENT ROOM PLAN  
1/2" = 1'-0"



F1 RESTROOM PLAN  
1/2" = 1'-0"

Revisions	Date

CONSULTANTS:



ARCHITECT/ENGINEERS:

**PARADIGM**

ENGINEERS AND CONSTRUCTORS

9 Oak Drive - Ocala, FL 34472 - PH: 502.339.8511 - www.paradigmusa.com

Drawing Title
ENLARGED PLANS
Approved Project Director

Project Title
RENOVATE REHABILITATIVE MEDICINE
Location
LAKE CITY VA MEDICAL CENTER 69 S. MARION AVE. LAKE CITY, FL 32025
Date
02-06-14
Checked
JCP
Drawn
SAT

Project Number
573A4-12-101
Building Number
64
Drawing Number
AE401

FULLY SPRINKLERED  
BID DOCUMENTS

Office of  
Construction  
and Facilities  
Management

Department of  
Veterans Affairs

1 2 3 4 5 6 7 8 9







