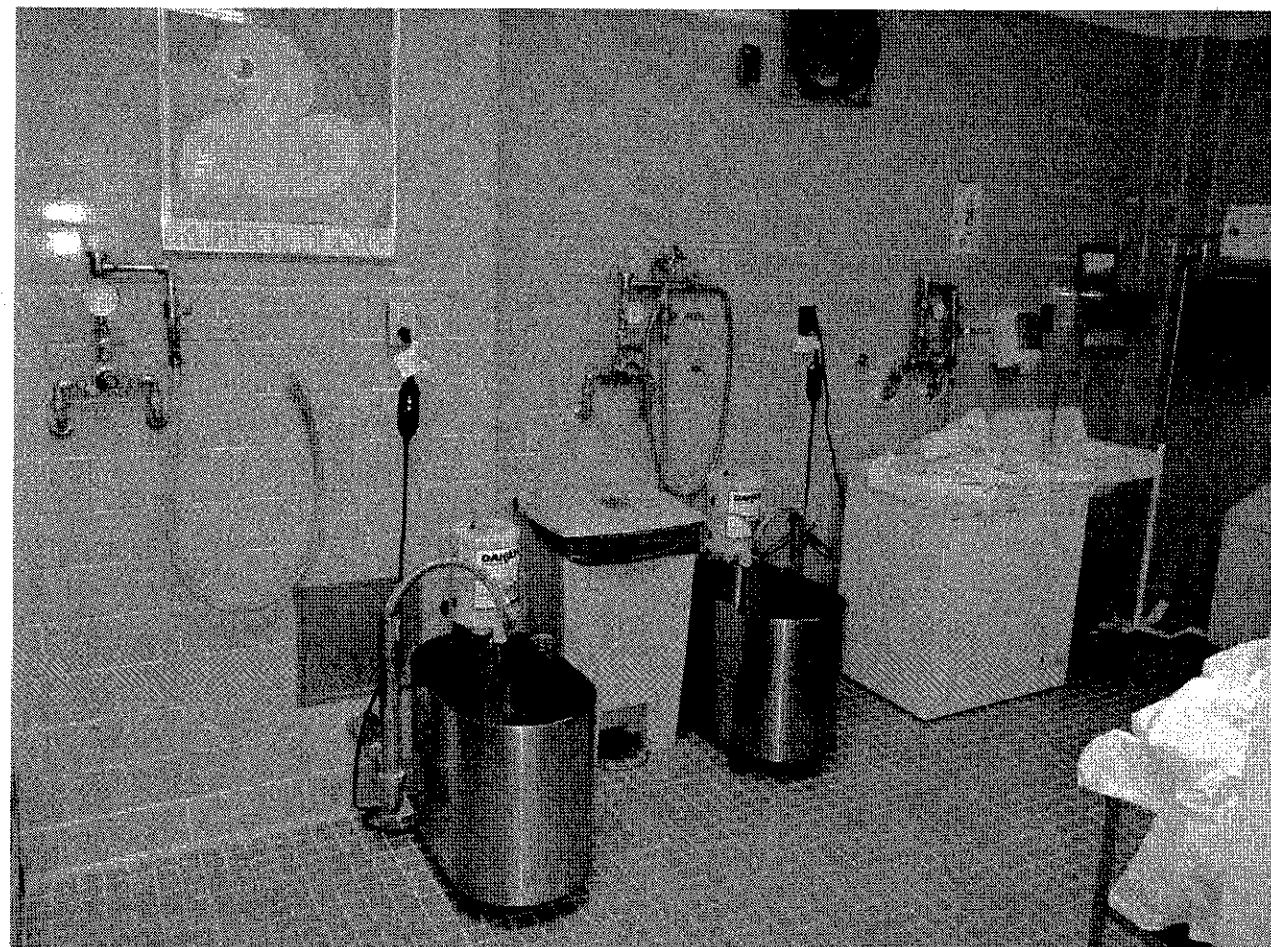


three inches = one foot
one and one half inches = one foot
one inch = one foot
three quarters inch = one foot
one half inch = one foot
one quarter inch = one foot
three eighths inch = one foot
one eighth inch = one foot



B3 EXISTING PHOTO - HYDROTHERAPY B-212D
1/4" = 1'-0"

LEGEND

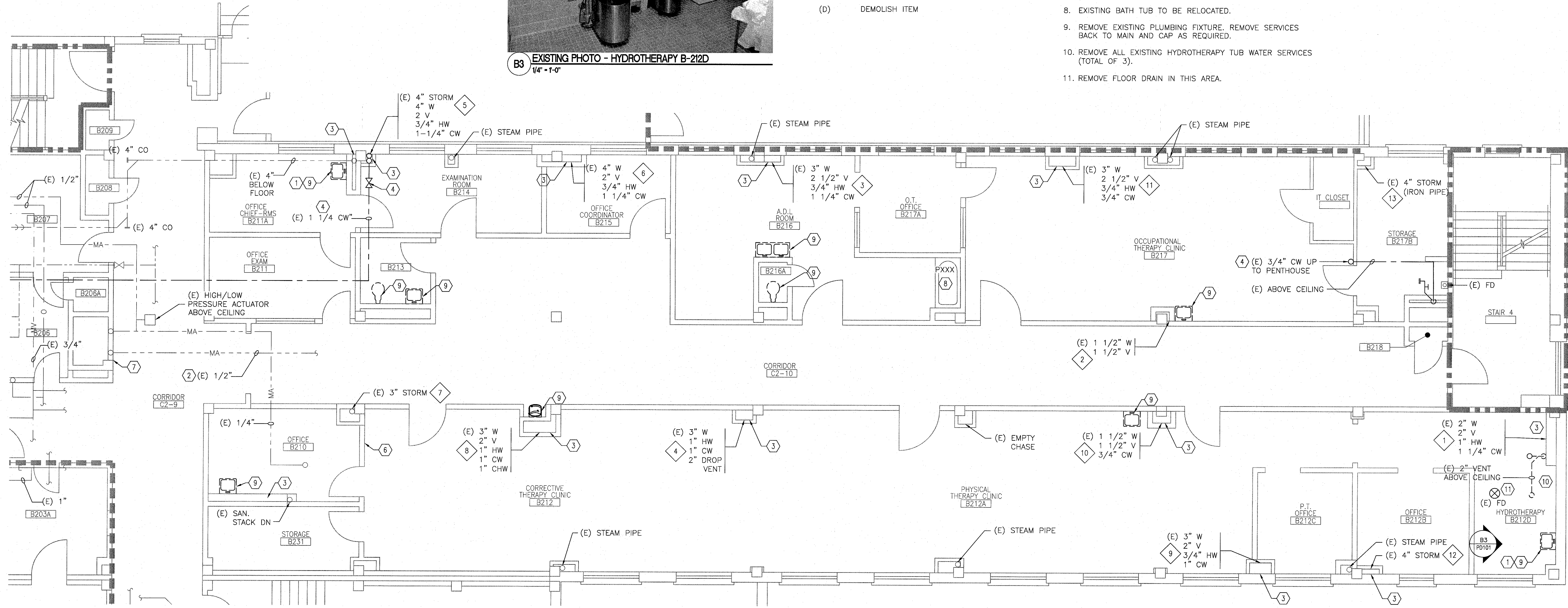
- END OF DEMOLITION
- EXISTING ITEMS TO BE DEMOLISHED
- PHOTO INDICATOR
- RISER NUMBER (EXAMPLE = 1)
- FLOOR DRAIN
- EXISTING ITEM
- DEMOLISH ITEM

KEY NOTES

- DEMOLISH EXISTING PLUMBING LINES AS SHOWN IN THE PERIMETER AREA OF THE 2ND FLOOR. REMOVE ALL EXISTING TOILETS, LAVATORIES, SINKS, FLOOR DRAINS, ETC.
- DEMOLISH EXISTING OXYGEN, MEDICAL AIR, AND VACUUM LINES BACK TO MAIN.
- EXISTING PLUMBING SHAFT TO REMAIN.
- EXISTING CW VALVE AND PIPING TO REMAIN.
- VENT RISER TO BE REPLACED FROM FLOOR LEVEL OF 2ND FLOOR TO JUST BELOW ROOF.
- EXISTING MED GAS ALARM PANEL.
- EXISTING MED GAS ZONE VALVE BOX.
- EXISTING BATH TUB TO BE RELOCATED.
- REMOVE EXISTING PLUMBING FIXTURE. REMOVE SERVICES BACK TO MAIN AND CAP AS REQUIRED.
- REMOVE ALL EXISTING HYDROTHERAPY TUB WATER SERVICES (TOTAL OF 3).
- REMOVE FLOOR DRAIN IN THIS AREA.

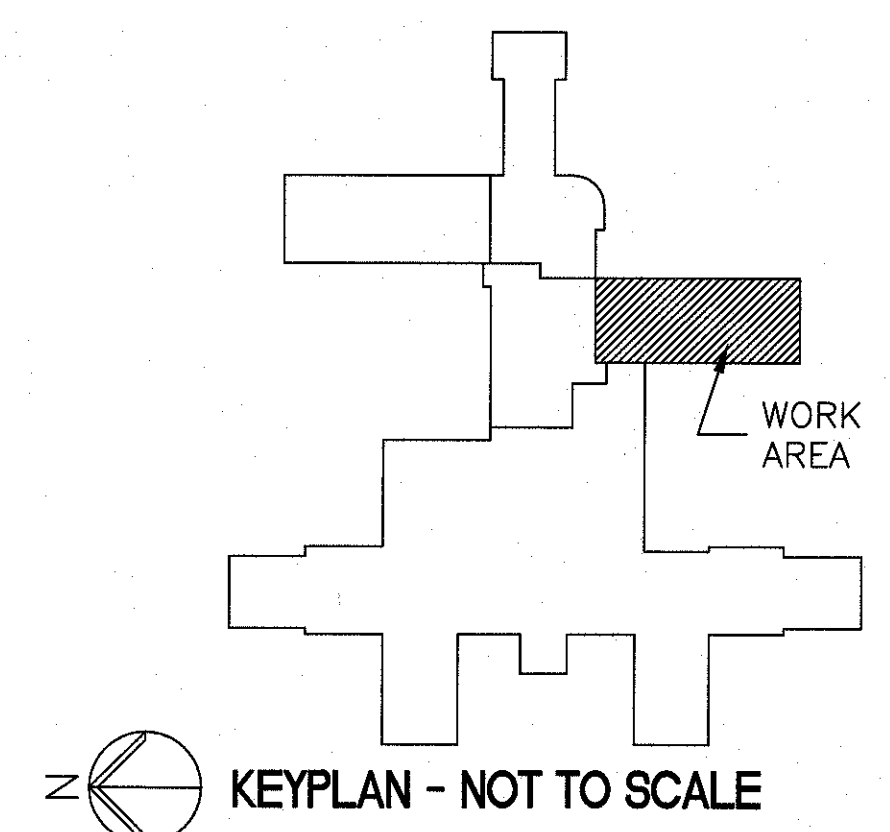
NOTES

- REFER TO DWG. M-001 FOR LEGEND, ABBREVIATIONS, AND GENERAL NOTES RELATED TO THIS SHEET.
- ALL EXISTING PIPING, DUCTWORK, SPRINKLERS, CONDUIT, LIGHTING OR OTHER CONSTRUCTION SHALL BE RELOCATED AS NECESSARY FOR ALL DEMOLITION AND INSTALLATION WORK.
- CONTRACTOR SHALL COORDINATE ALL NEW MECHANICAL WORK WITH CONDUIT LIGHTING AND ELECTRICAL WORK, AND VERIFY HEIGHTS.



E1 PARTIAL FLOOR PLAN
1/4" = 1'-0"

GENERAL NOTE:
ALL EXISTING PIPING, DUCTWORK, SPRINKLERS, CONDUIT, LIGHTING OR OTHER CONSTRUCTION SHALL BE RELOCATED AS NECESSARY FOR ALL DEMOLITION AND INSTALLATION WORK.



KEYPLAN - NOT TO SCALE

FULLY SPRINKLERED
BID DOCUMENTS

		CONSULTANTS:			ARCHITECT/ENGINEERS:		Drawing Title		Project Title		Project Number		Office of Construction and Facilities Management
							PLUMBING DEMOLITION PLAN SECOND FLOOR		RENOVATE REHABILITATIVE MEDICINE		573A4-12-101		
								Approved Project Director		Location LAKE CITY VA MEDICAL CENTER 69 S. MARION AVE. LAKE CITY, FL 32025		Building Number 64	
										Date 02-05-2014		Drawing Number PD101	
										Checked KLP		Drawn JDM	
Revisions		Date				9 Oak Drive, Ocala FL 34472 - PH: 502.339.8511 - www.paradigmusa.com						Department of Veterans Affairs	

three inches = one foot
one and one half inches = one foot
one inch = one foot
three quarters inch = one foot
one half inch = one foot
three eighths inch = one foot
one quarter inch = one foot
one eighth inch = one foot

LEGEND

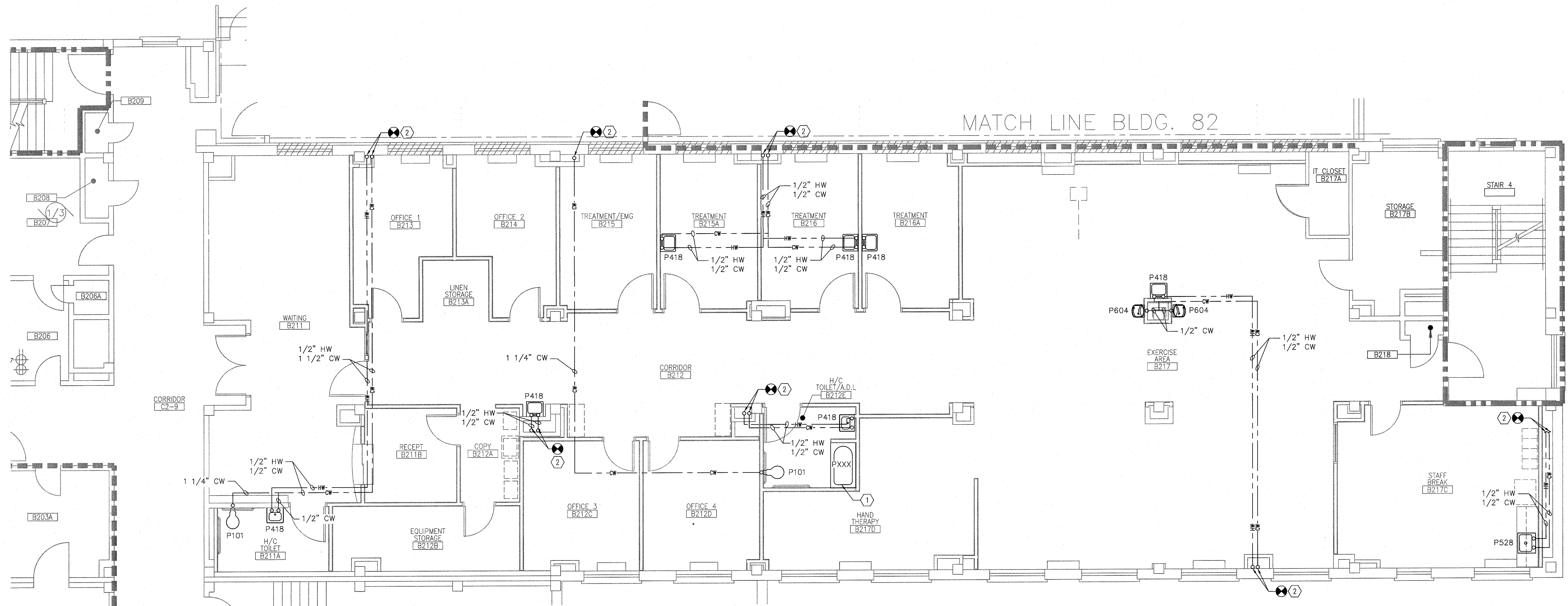
- CONNECTION BETWEEN NEW AND EXISTING
- NEW COLD WATER
- NEW HOT WATER PIPING
- NEW HOT WATER RETURN
- CW EXISTING COLD WATER
- HW EXISTING HOT WATER
- HW RETURN EXISTING HOT WATER RETURN

KEY NOTES

- RELOCATED BATH TUB; NO PLUMBING CONNECTIONS.
- TIE INTO EXISTING RISER THIS LOCATION.

NOTES

- A. REFER TO DWG. M-001 FOR LEGEND, ABBREVIATIONS, AND GENERAL NOTES RELATED TO THIS SHEET.
- B. ALL EXISTING PIPING, DUCTWORK, SPRINKLERS, CONDUIT, LIGHTING OR OTHER CONSTRUCTION SHALL BE RELOCATED AS NECESSARY FOR ALL DEMOLITION AND INSTALLATION WORK.

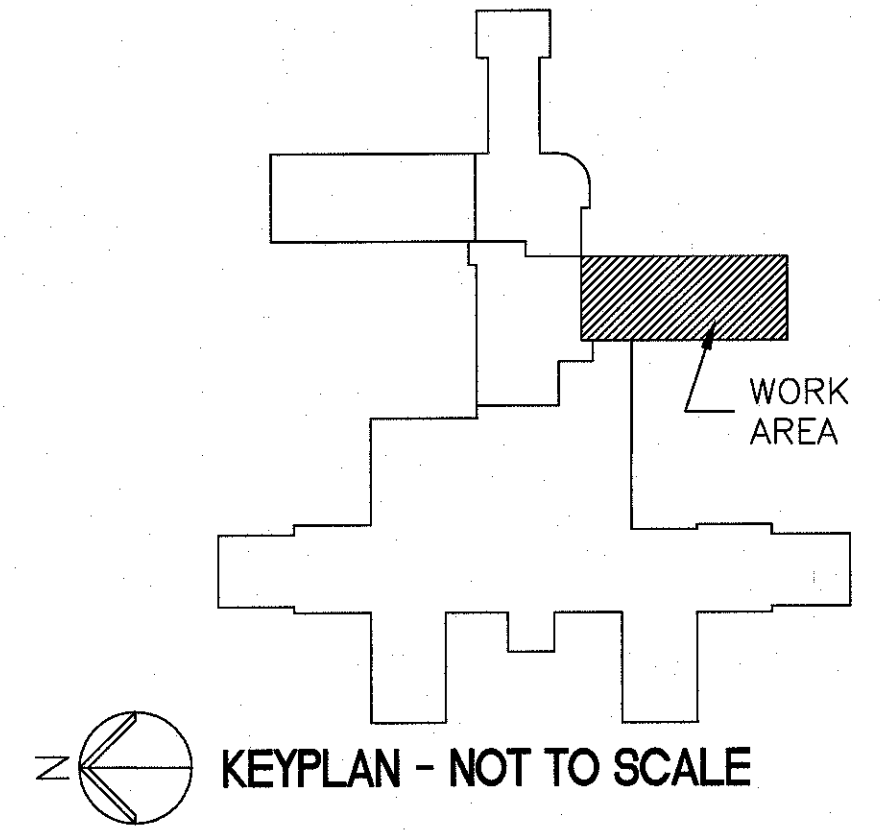


E1 PARTIAL FLOOR PLAN
1/4" = 1'-0"

PLUMBING FIXTURE SCHEDULE										
MARK	DESCRIPTION	WASTE PIPE		VENT PIPE		COLD WATER		HOT WATER		REMARKS
		IN	[mm]	IN	[mm]	IN	[mm]	IN	[mm]	
P-101	WATER CLOSET FLOOR MTD	3	[75]	2	[50]	1.25	[31]	-	-	
P-418	LAVATORY	2	[50]	1.5	[38]	0.5	[13]	0.5	[13]	
P-528	SINK	2	[75]	1.5	[50]	0.5	[13]	0.5	[13]	
P-604	WATER COOLER	2	[75]	1.5	[50]	0.5	[13]	0.5	[13]	

FIXTURE UNIT HOOK-UP SCHEDULE				
TYPE	WASTE PIPE SIZE, IN.	VENT PIPE SIZE, IN.	CW SUPPLY PIPE SIZE, IN.	HW SUPPLY PIPE SIZE, IN.
WATER CLOSET FLUSH VALVE	4"	2"	1-1/4"	----
LAVATORY	1-1/2"	1-1/2"	1/2"	1/2"
SINK	2"	1-1/2"	1/2"	1/2"
WATER COOLER	2"	1-1/2"	1/2"	-

GENERAL NOTE:
ALL EXISTING PIPING, DUCTWORK, SPRINKLERS, CONDUIT, LIGHTING OR OTHER CONSTRUCTION SHALL BE RELOCATED AS NECESSARY FOR ALL DEMOLITION AND INSTALLATION WORK.



FULLY SPRINKLERED
BID DOCUMENTS

CONSULTANTS:			ARCHITECT/ENGINEERS: 2008 VA FORM 08-6231	Drawing Title PLUMBING PLAN SECOND FLOOR		Project Title RENOVATE REHABILITATIVE MEDICINE		Project Number 573A4-12-101		Office of Construction and Facilities Management 		
Revisions				Approved Project Director		Location LAKE CITY VA MEDICAL CENTER 608 S. MARION AVE. LAKE CITY, FL 32025		Building Number 64				
Date		Date		Date		Date		Drawing Number PL101				

three inches = one foot
one and one half inches = one foot
one inch = one foot
three quarters inch = one foot
one half inch = one foot
three eighths inch = one foot
one quarter inch = one foot
one eighth inch = one foot
one sixteenth inch = one foot

LEGEND

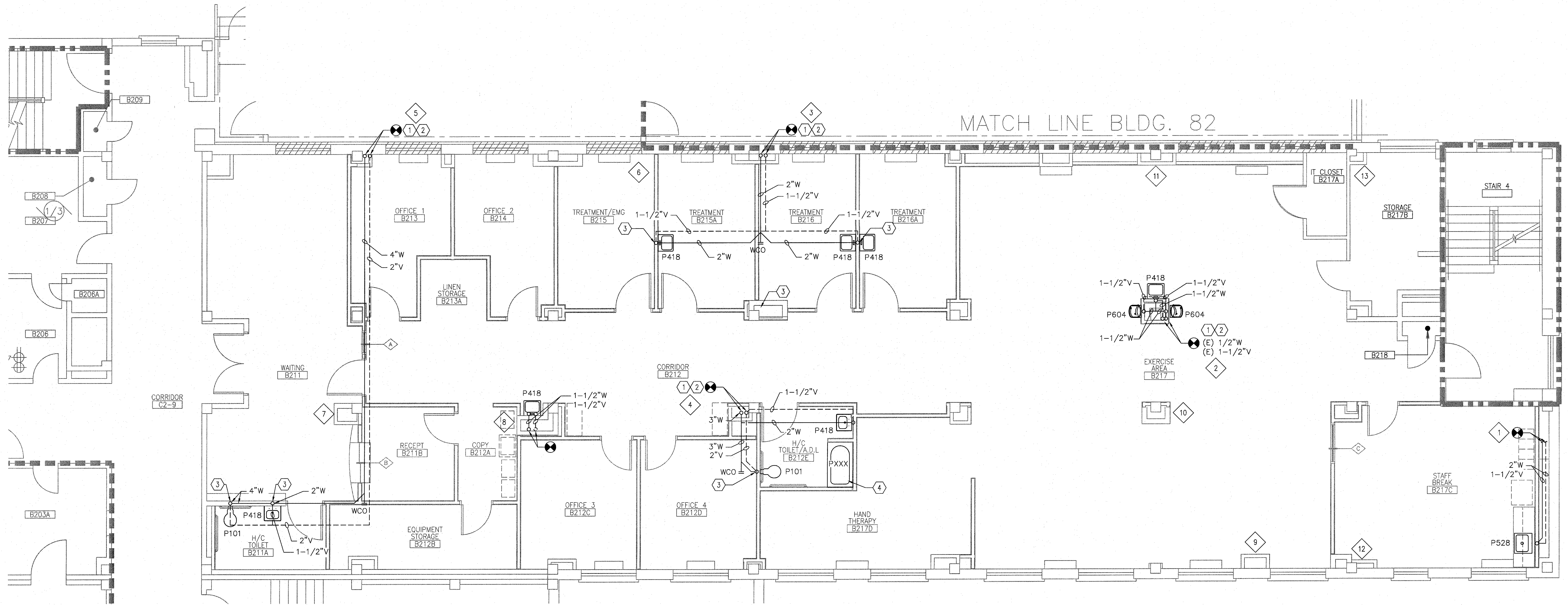
- CONNECTION BETWEEN NEW AND EXISTING
- EXISTING SANITARY LINE
- EXISTING VENT LINE
- RISER NUMBER (EXAMPLE = 1)

KEY NOTES

- TIE IN WASTE AT EXISTING RISER.
- TIE IN VENT AT EXISTING RISER.
- FLOOR PENETRATION TO BELOW.
- RELOCATED BATH TUB; NO PLUMBING CONNECTIONS.

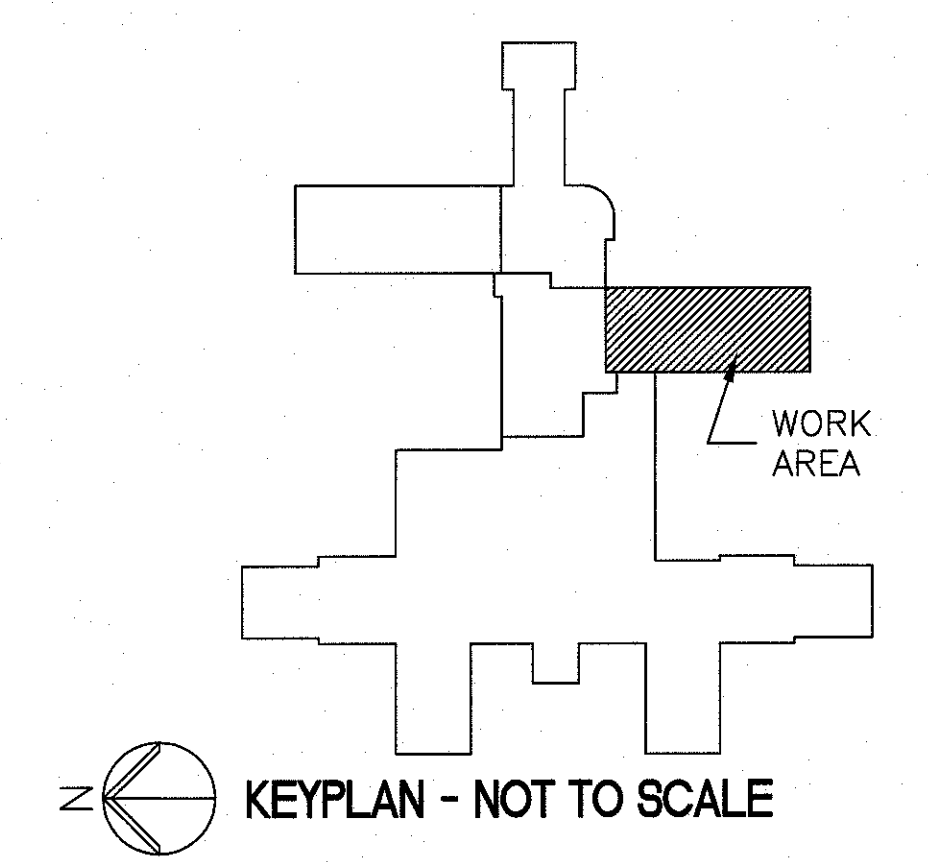
NOTES

- A. REFER TO DWG. M-001 FOR LEGEND, ABBREVIATIONS, AND GENERAL NOTES RELATED TO THIS SHEET.
- B. ALL EXISTING PIPING, DUCTWORK, SPRINKLERS, CONDUIT, LIGHTING OR OTHER CONSTRUCTION SHALL BE RELOCATED AS NECESSARY FOR ALL DEMOLITION AND INSTALLATION WORK.



E1 PARTIAL FLOOR PLAN
1/4" = 1'-0"

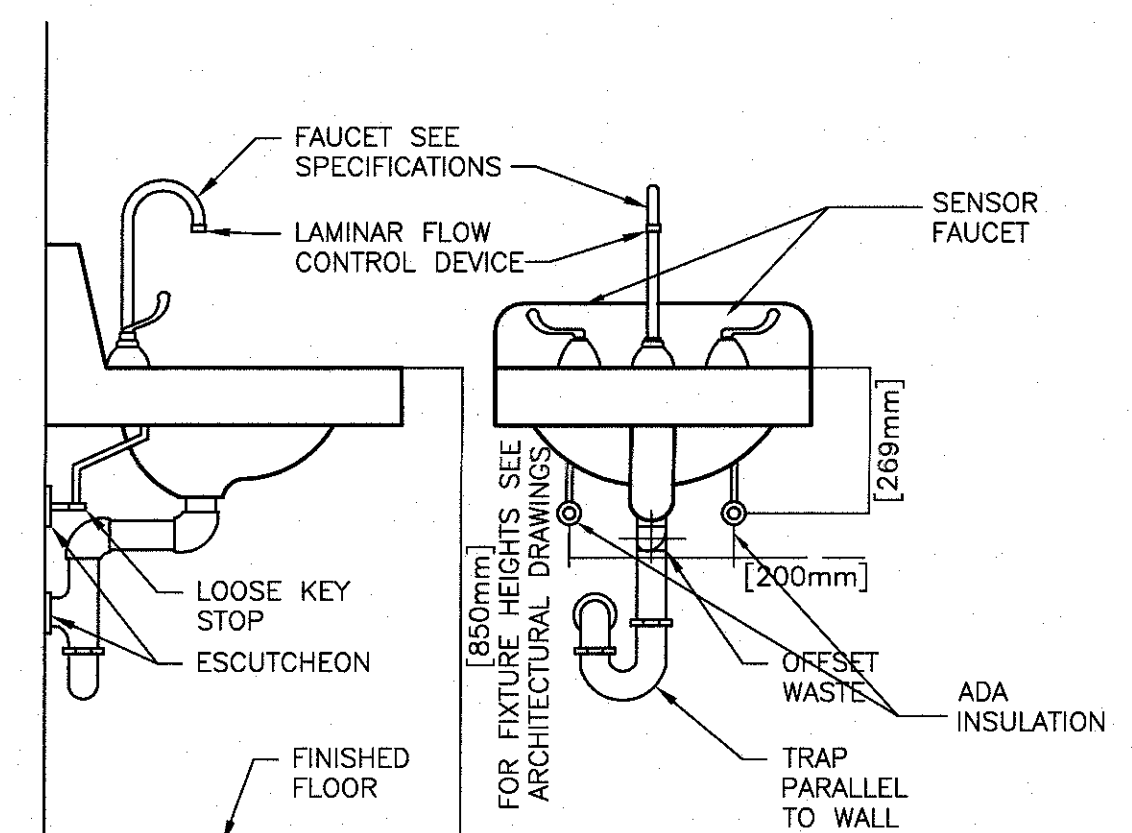
GENERAL NOTE:
ALL EXISTING PIPING, DUCTWORK, SPRINKLERS, CONDUIT, LIGHTING OR OTHER CONSTRUCTION SHALL BE RELOCATED AS NECESSARY FOR ALL DEMOLITION AND INSTALLATION WORK.



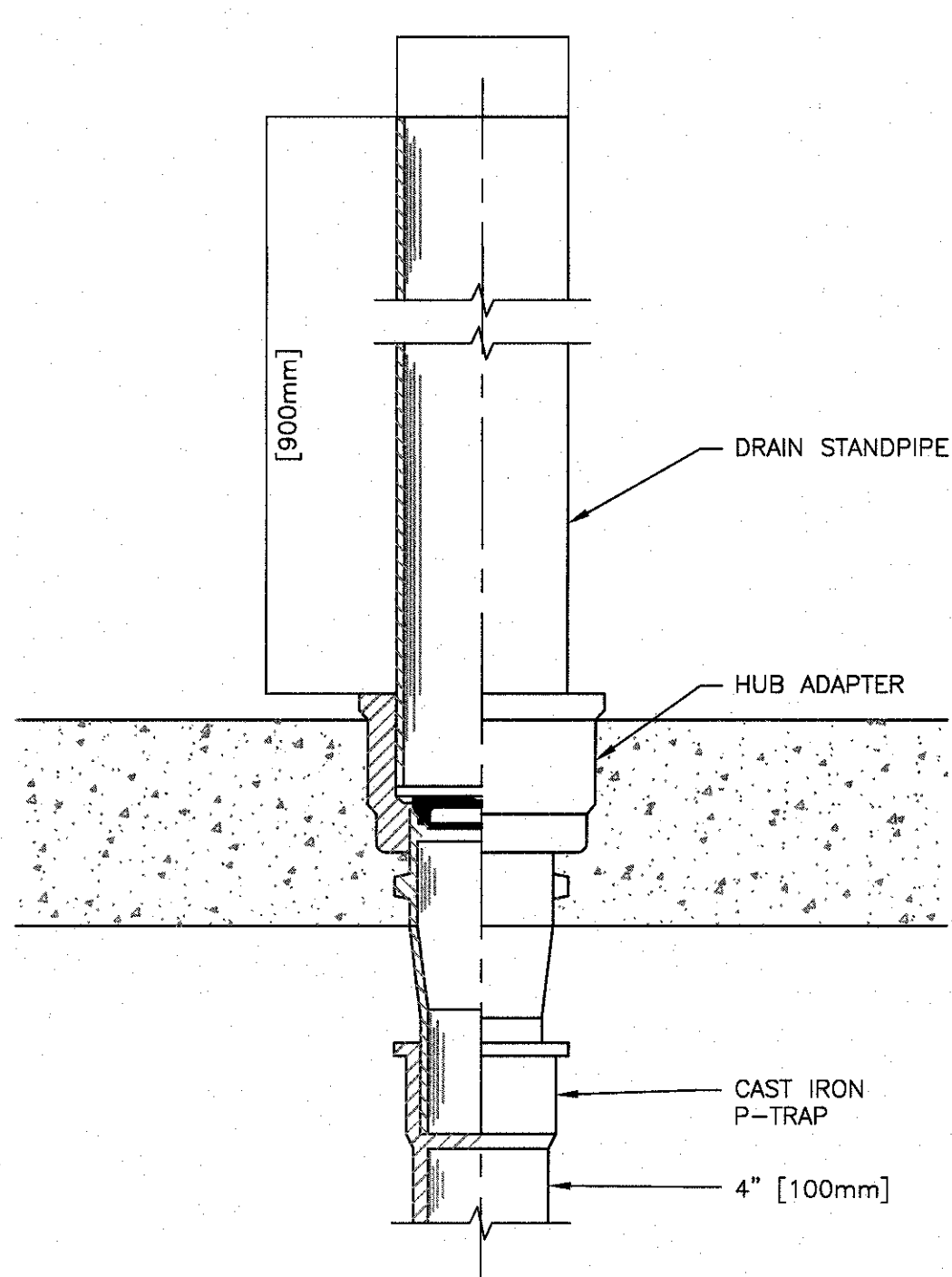
FULLY SPRINKLERED
BID DOCUMENTS

		CONSULTANTS:			ARCHITECT/ENGINEERS:		Drawing Title		Project Title			Project Number 573A4-12-101		Office of Construction and Facilities Management 	
							SANITARY PLAN SECOND FLOOR		RENOVATE REHABILITATIVE MEDICINE			Building Number 64			
							Approved Project Director		Location LAKE CITY VA MEDICAL CENTER 610 S. MARION AVE., LAKE CITY, FL 32025			Drawing Number PS101			
Revisions		Date							Date 02-05-2014		Checked KLP		Drawn JDM		

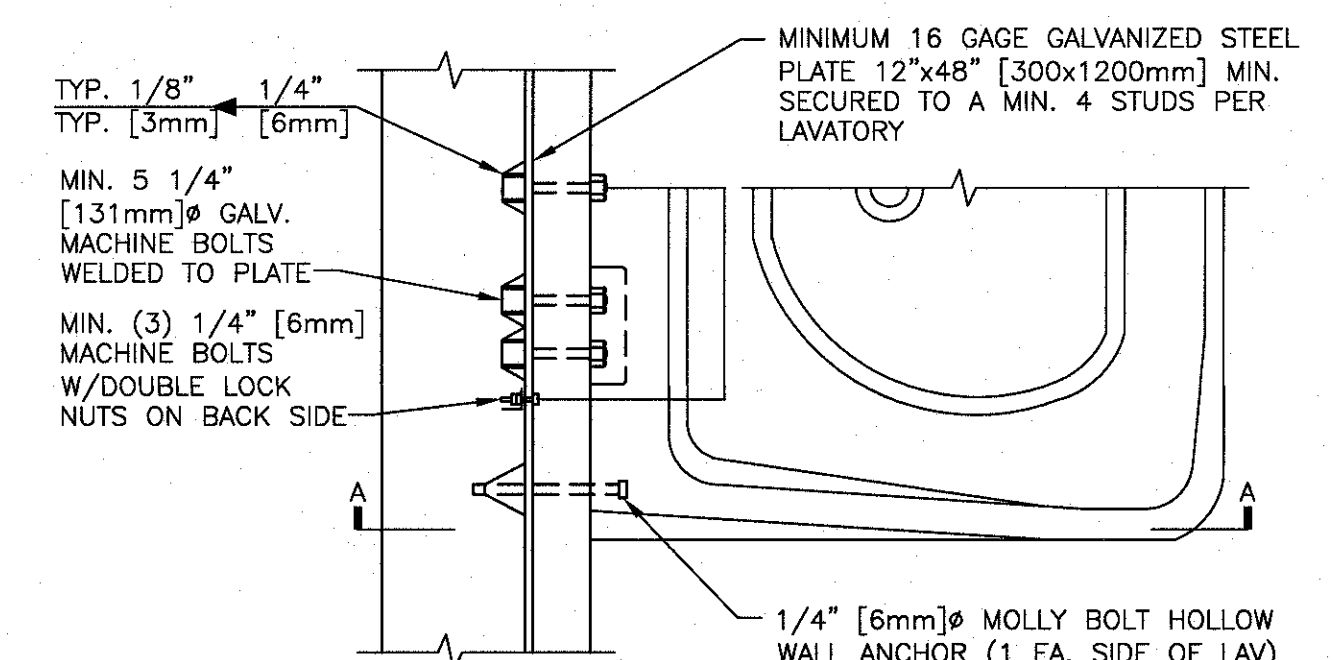
three inches = one foot
one and one half inches = one foot
one inch = one foot
three quarters inch = one foot
one half inch = one foot
three eighths inch = one foot
one quarter inch = one foot
one eighth inch = one foot



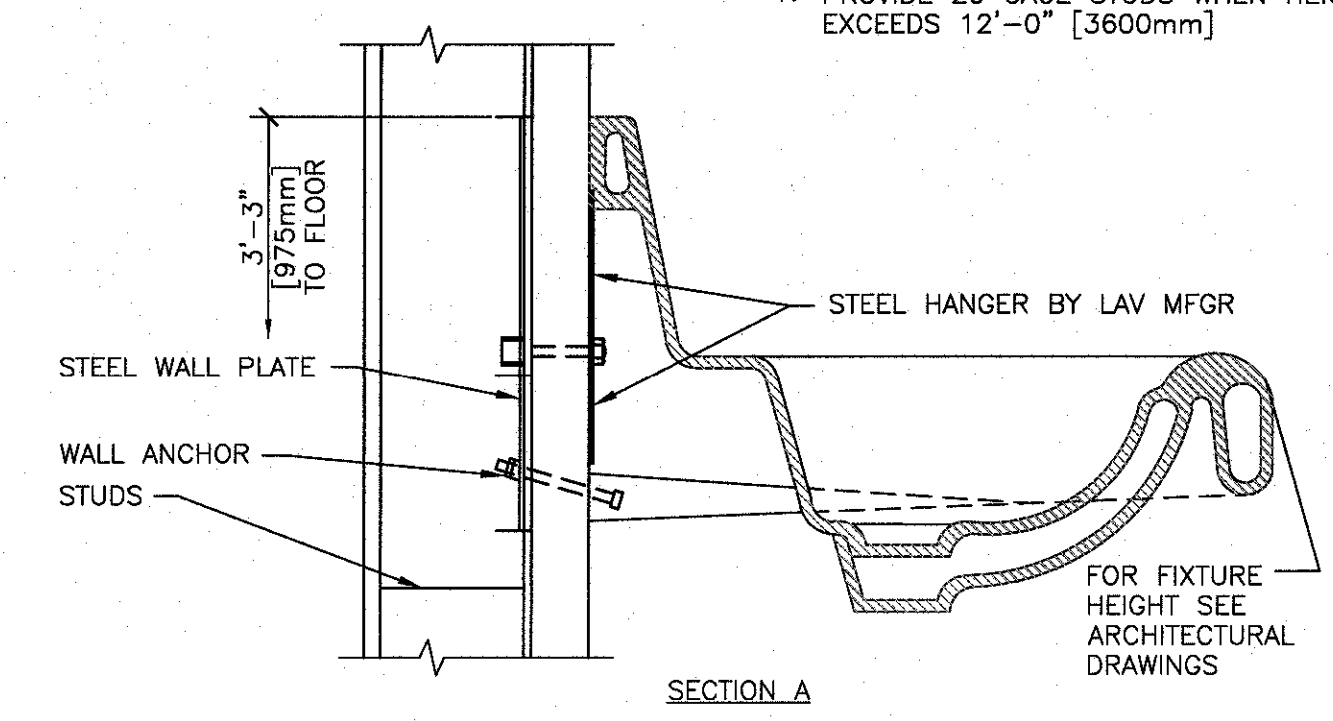
B8 TYPICAL WHEELCHAIR LAVATORY DETAIL
NOT TO SCALE



D6 HUB DRAIN AND STANDPIPE
NOT TO SCALE



D8 LAVATORY MOUNTING DETAIL
NOT TO SCALE



GENERAL NOTE:
ALL EXISTING PIPING, DUCTWORK, SPRINKLERS, CONDUIT, LIGHTING OR OTHER CONSTRUCTION SHALL BE RELOCATED AS NECESSARY FOR ALL DEMOLITION AND INSTALLATION WORK.

FULLY SPRINKLERED
BID DOCUMENTS

CONSULTANTS:		ARCHITECT/ENGINEERS:		Drawing Title		Project Title		Project Number		Office of Construction and Facilities Management Department of Veterans Affairs	
		PARADIGM ENGINEERS AND CONSTRUCTORS		PLUMBING DETAILS		RENOVATE REHABILITATIVE MEDICINE		573A4-12-101			
		9 Oak Drive, Ocala FL 34472 - Ph: 502.339.8511 - www.paradigmusa.com		Approved Project Director		Location LAKE CITY VA MEDICAL CENTER 600 S. MARION AVE. LAKE CITY, FL 32025		Building Number 64			
Revisions						Date 02-05-2014		Checked KLP		Drawing Number PS601	