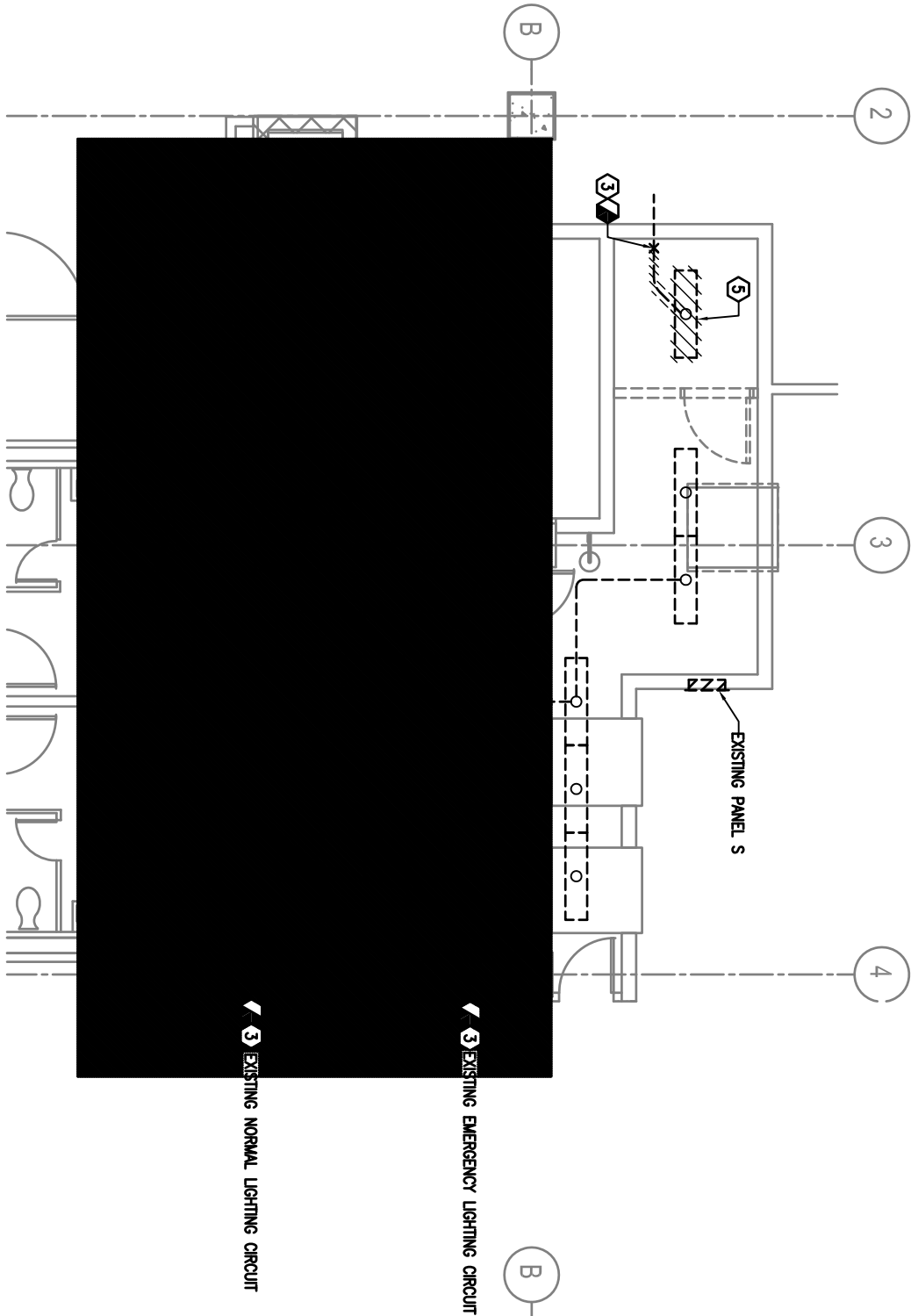
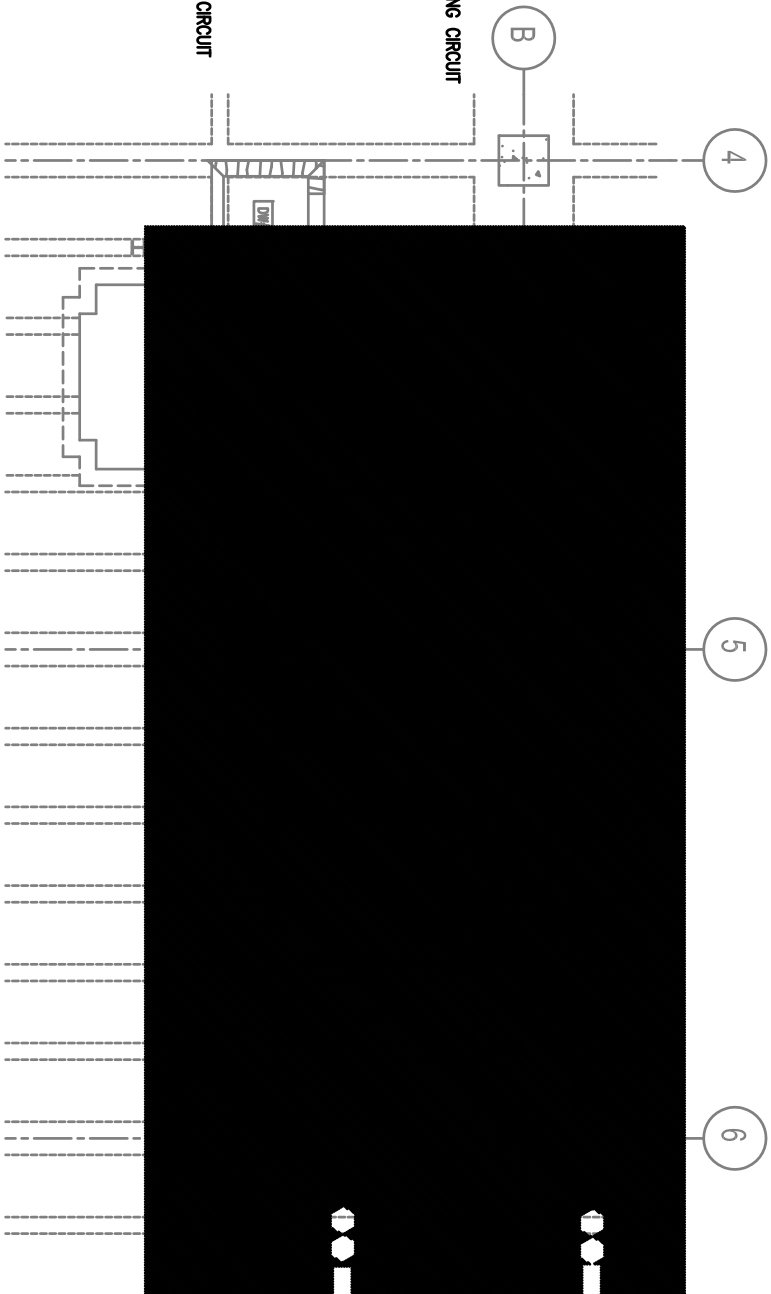


**BASEMENT PLAN - MECHANICAL DEMOLITION**  
SCALE: 1/4" = 1'-0"



**BASEMENT PLAN - ELECTRICAL DEMOLITION**  
SCALE: 1/4" = 1'-0"



**CRAWL SPACE PIPING PLAN - MECHANICAL DEMOLITION**  
SCALE: 1/4" = 1'-0"

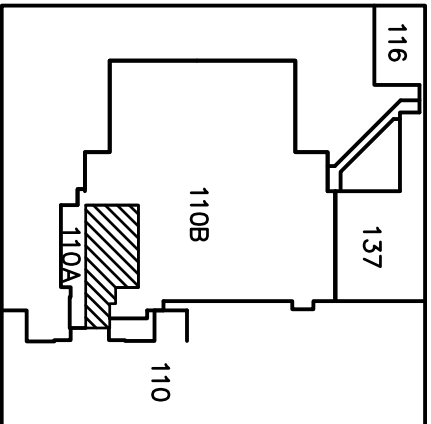
**MECHANICAL DEMOLITION NOTES**

- REMOVE MAKE-UP AIR DUCTWORK AND ALL APPURTENANCES AS INDICATED. PREPARE DUCTWORK FOR NEW/EXISTING CONNECTION.
- 
- 
- 
- DISCONNECT ETO STERILIZERS FROM EMERGENCY VENT LINE. PREPARE REMAINING PIPING FOR NEW/EXISTING CONNECTION.
- 
- 
- 
- 
- REMOVE TRANSFER GRILLE AND ASSOCIATED DUCTWORK AS INDICATED. CAP AND ABANDON REMAINING.

**ELECTRICAL DEMOLITION NOTES**

- 
- 
- REMOVE CONDUIT AND CONDUCTORS TO THIS POINT. TERMINATE AND RETAIN EXISTING CONDUCTORS FOR RECONNECTION TO LIGHTING FIXTURES.
- 
- REMOVE LIGHTING FIXTURES AND RETAIN FOR RENOVATION AND RECONNECTION TO EXISTING CIRCUIT.
- 
- 
- 
- 
- 

**KEY PLAN**



1/4" = 1'-0"

Drawing Title		Project Title		Date	
DEMOLITION FLOOR PLANS		SPS RENOVATION FOR CART WASH VIA HAMPTON		09-12-2014	
Location: HAMPTON, VIRGINIA		Drawing No: 100A-MD101		Project No: 590-14-108	
Printed: SEPTEMBER 12, 2014		Drawing No: 083		Drawing No: MK	
Drawing No: 083		Drawing No: MK		Drawing No: AD	
SHEET 17 OF 23		SHEET 17 OF 23		SHEET 17 OF 23	

ARCHITECT/ENGINEERS:		CONSULTANTS:	
TOLAND MIZELL MOLNAR		CLARK NEXSEN	
435 SPENCE DRIVE, SALISBURY, NC 28144		4525 MAIN STREET, SUITE 1400, VIRGINIA BEACH, VIRGINIA 23462	
757-465-5600		757-465-5600	
WWW.TOLANDMIZELLMOLNAR.COM		WWW.CLARKNEXSEN.COM	

