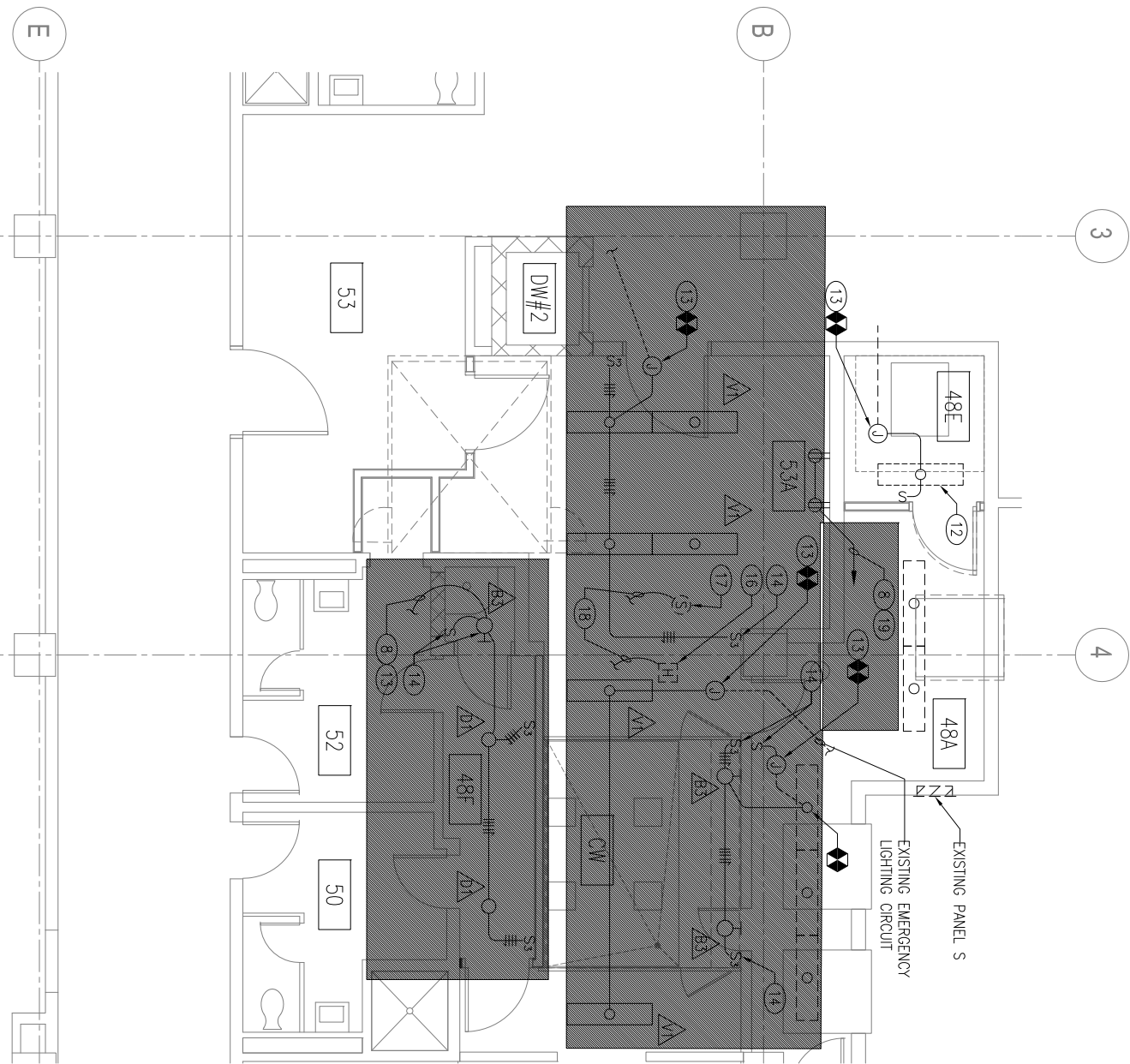
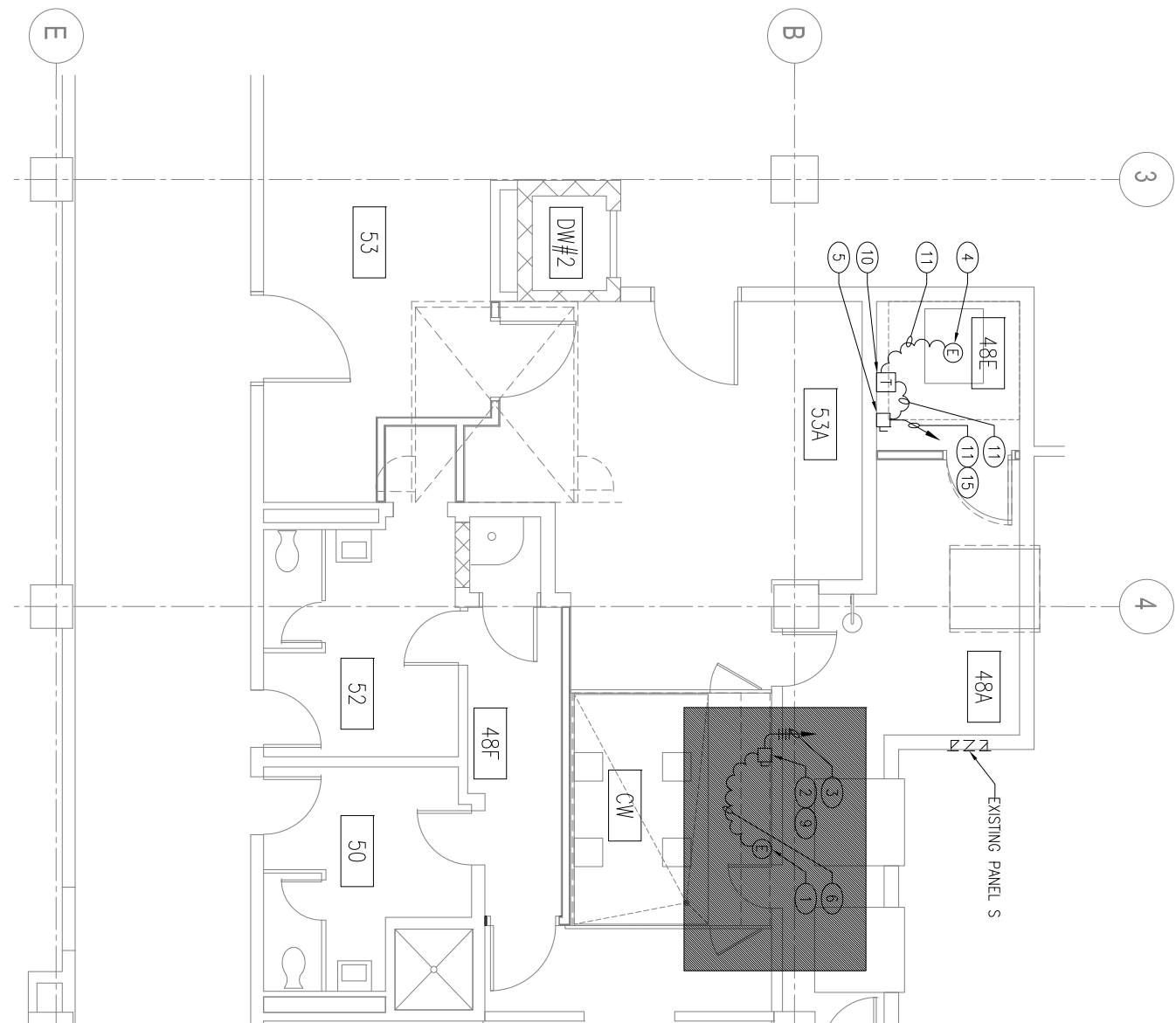


T:\ENGINEERING\NRM\_MINOR\_PROJECTS 2014\590-14-108 SPS CART WASHER & ETO ABATOR\FINAL DESIGN DOCUMENTS\ETO ONLY DRAWINGS\DRAWINGS\4 MECHANICAL-ELECTRICAL\CAD\ME102 NEW WORK ELECTRICAL AND POWER.DWG



**BASEMENT PLAN - ELECTRICAL NEW WORK**  
SCALE: 1/4" = 1'-0"

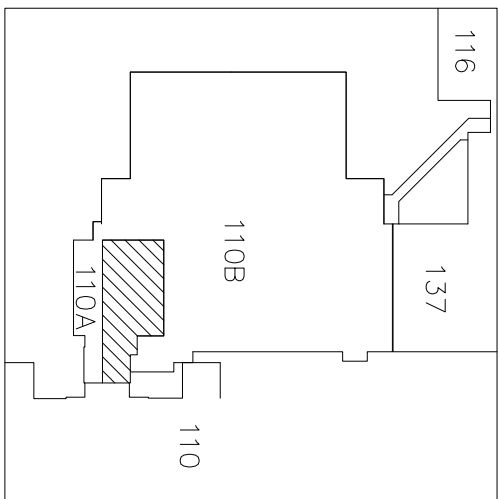


**BASEMENT PLAN - POWER NEW WORK**  
SCALE: 1/4" = 1'-0"

## NEW WORK ELECTRICAL NOTES

- CART WASHER CONNECTION - 15.2 FLA, 208V, 1PH, FINAL CONNECTION SHALL BE MADE TO A GRAY TYPE TRANSFORMER FURNISHED AND INSTALLED BY THE CART WASHER SUPPLIER.
- DISCONNECT SWITCH - 3P, 60A, 240V, FUSE AT 30A WITH RFI FUSES, NEMA 1.
- 3#6, 1#10 GND IN 1" TO EXISTING PANEL S. UTILIZE EXISTING 3P, 60A CIRCUIT BREAKER IN SPACES 11A, 11B.
- E.O. ABATOR CONNECTION - 30 FLA, 220-230V, 1PH.
- DISCONNECT SWITCH - 2P, 60A, 240V, FUSE AT 40A WITH RFI FUSES, NEMA 1.
- 3#10, 1#10 GND, 3/4" C.
- EF-2 (LOCATED IN GRANT SPACE), 1/3HP, 120V.
- 2#12, 1#12 GND, 3/4" C.
- COORDINATE EXACT LOCATION WITH THE CART WASHER SUPPLIER.
- BOOST TRANSFORMER - 1.0 KVA, INPUT: 208V, 1PH; OUTPUT: 220V, 1PH; 10 KVA MAX OUTPUT. WALL MOUNT IMMEDIATELY ADJACENT TO THE DISCONNECT SWITCH, UNIT WEIGHT IS APPROXIMATELY 16 LBS.
- 2#8, 1#10 GND, 3/4" C.
- RE-INSTALL EXISTING LIGHTING FIXTURE AT THIS LOCATION.
- INTERCEPT EXISTING LIGHTING CIRCUIT, PROVIDE JUNCTION BOX AND EXTEND CIRCUITRY AS SHOWN.
- SURFACE MOUNT
- TO EXISTING PANEL 11E02, SPACES 20 & 22. PROVIDE A 2P, 40A CIRCUIT BREAKER IN EXISTING SPACES. CIRCUIT BREAKER ALC RATING SHALL MATCH EXISTING BREAKERS.
- RE-INSTALL EXISTING AUDIO-VISUAL ALARM AT THIS LOCATION.
- RE-INSTALL EXISTING SPEAKER AT THIS LOCATION.
- INTERCEPT AND EXTEND EXISTING CIRCUITRY TO RE-INSTALLED DEVICE.
- TO EXISTING PANEL 11X02, PROVIDE A 1P, 20A CIRCUIT BREAKER IN EXISTING SPACE #13. CIRCUIT BREAKER ALC RATING SHALL MATCH EXISTING BREAKER.

## KEY PLAN



0 1' 5' 10' 15'

1/4" = 1'-0"

| Revisions | Date |
|-----------|------|
|           |      |

ARCHITECT/ENGINEERS:  
**TOLAND MIZELL MOLNAR**  
435 SPENCE DRIVE, SALISBURY, NC 28144

CONSULTANTS:  
**CLARK•NEXSEN**  
4525 MAIN STREET, SUITE 1400  
VIRGINIA BEACH, VIRGINIA 23462  
757-465-5600 FAX 757-465-5608  
WWW.CLARKNEXSEN.COM

## FINAL SUBMITTAL

Drawing Title  
**NEW WORK ELECTRICAL AND POWER**

Location  
**HAMPPTON, VIRGINIA**

Project Title  
**SPS RENOVATION FOR CART WASH VA HAMPTON**

Printed: **SEPTEMBER 12, 2014**  
Building No. **083**  
Checked by: **MLK**  
Drawn by: **MLK**

Date  
**09-12-2014**  
Project No.  
**590-14-108**

Sheet **10A-ME102**  
SHEET **9** OF **23**

