

T:\ENGINEERING\NRM_MINOR_PROJECTS 2014\590-14-108 SPS CART WASHER & ETO ABATOR\FINAL DESIGN DOCUMENTS\ETO ONLY DRAWINGS\DRAWINGS\4 MECHANICAL-ELECTRICAL\CAD\ME401 PARTIAL FLOOR PLANS.DWG

Revisions	Date

ARCHITECTENGINEERS:
TOLAND MIZELL MOLNAR
435 SPENCE DRIVE, SALISBURY, NC 28144

CONSULTANTS:
CLARK•NEXSEN
4525 MAIN STREET SUITE 1400
VIRGINIA BEACH, VIRGINIA 23462
757-465-5600 FAX 757-465-5608
WWW.CLARKNEXSEN.COM

FINAL SUBMITTAL

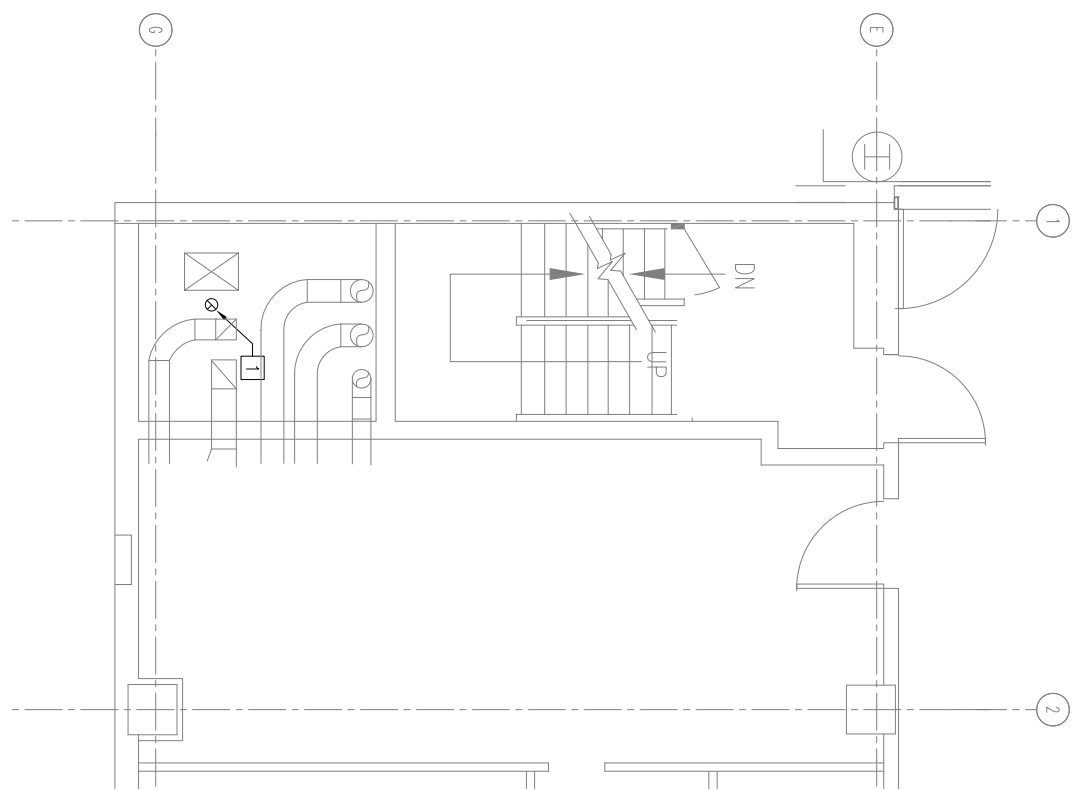
Drawing Title
PARTIAL FLOOR PLANS

Project Title
**SPS RENOVATION FOR
CART WASH VA HAMPTON**

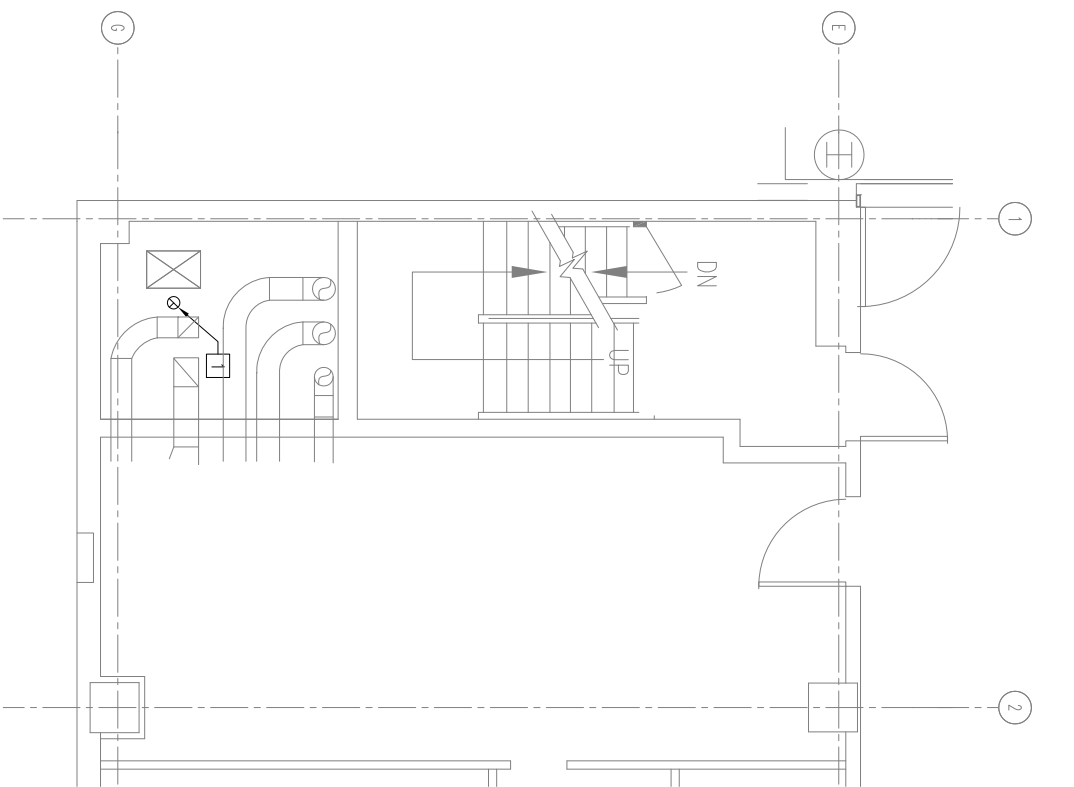
Date
09-12-2014
Project No.
590-14-108

Printed: **SEPTEMBER 12, 2014**
Building No. **083** Checked by: **WPK** Drawn by: **KQ**
110A-ME401
SHEET **20** OF **23**
Department of Veterans Affairs

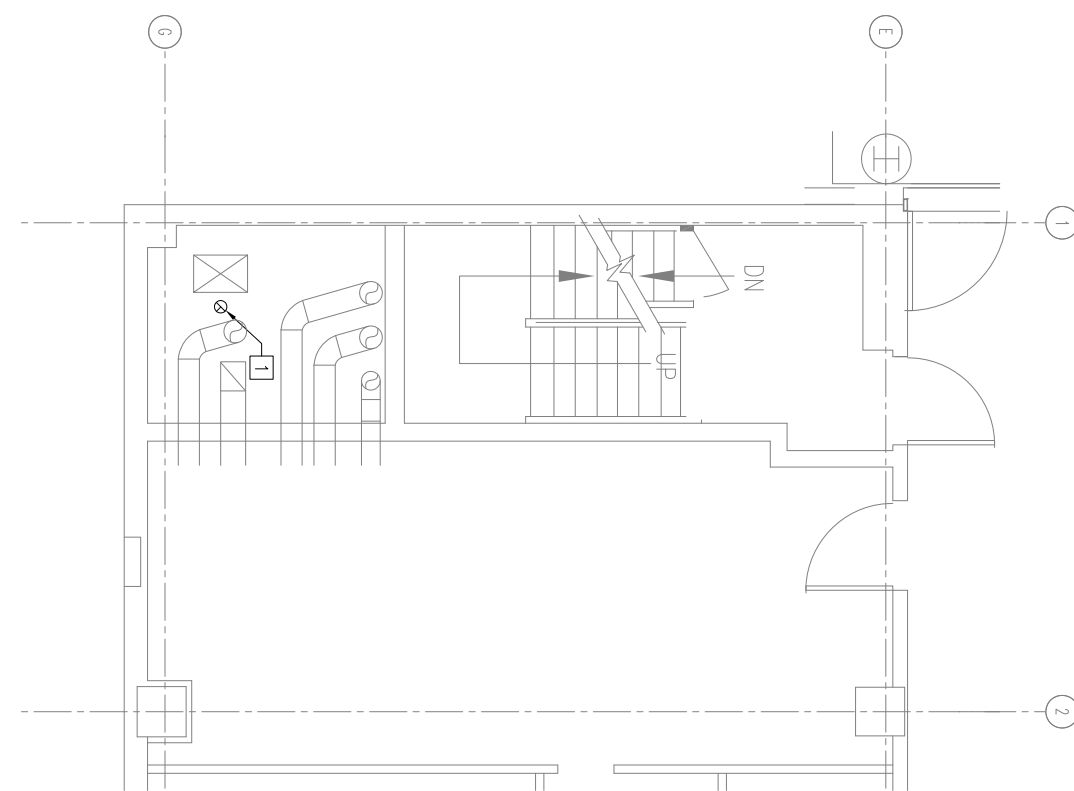
FIRST PLAN - NEW WORK
SCALE: 1/4" = 1'-0"



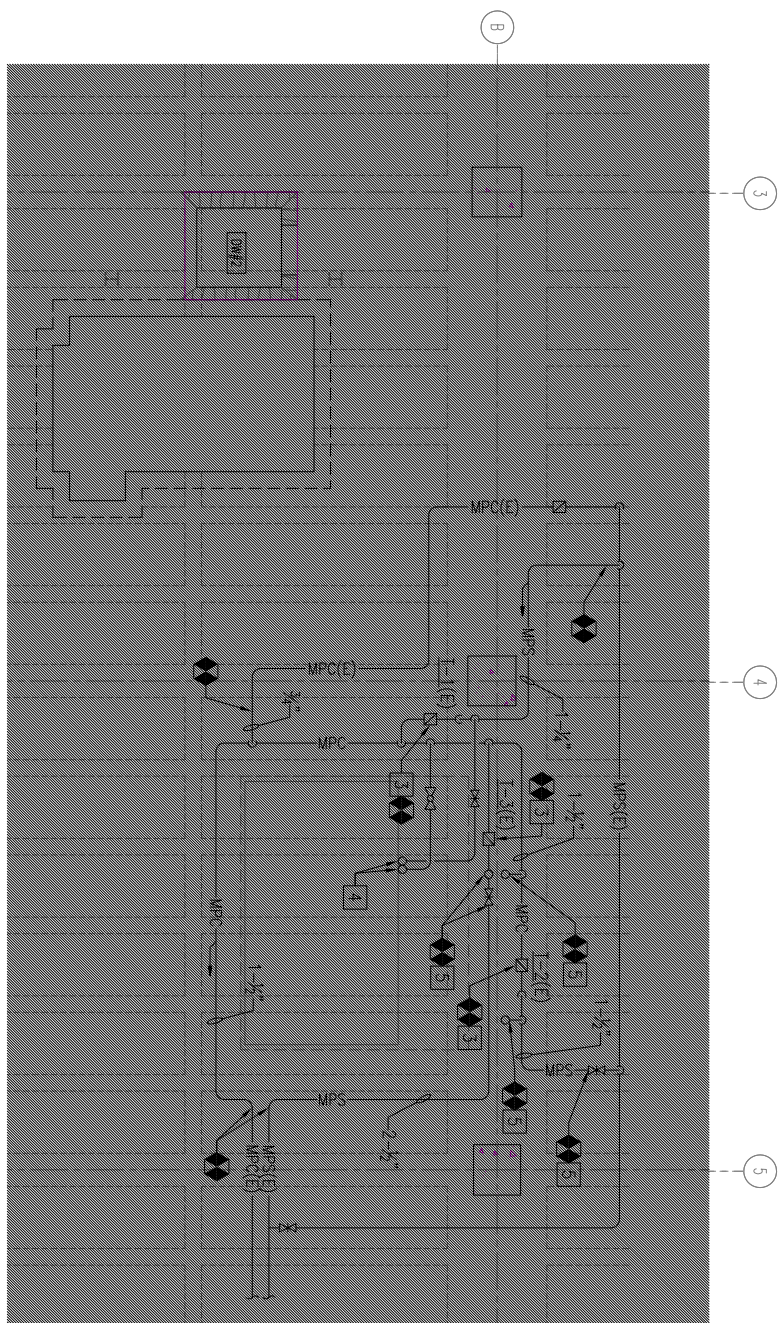
SECOND PLAN - NEW WORK
SCALE: 1/4" = 1'-0"



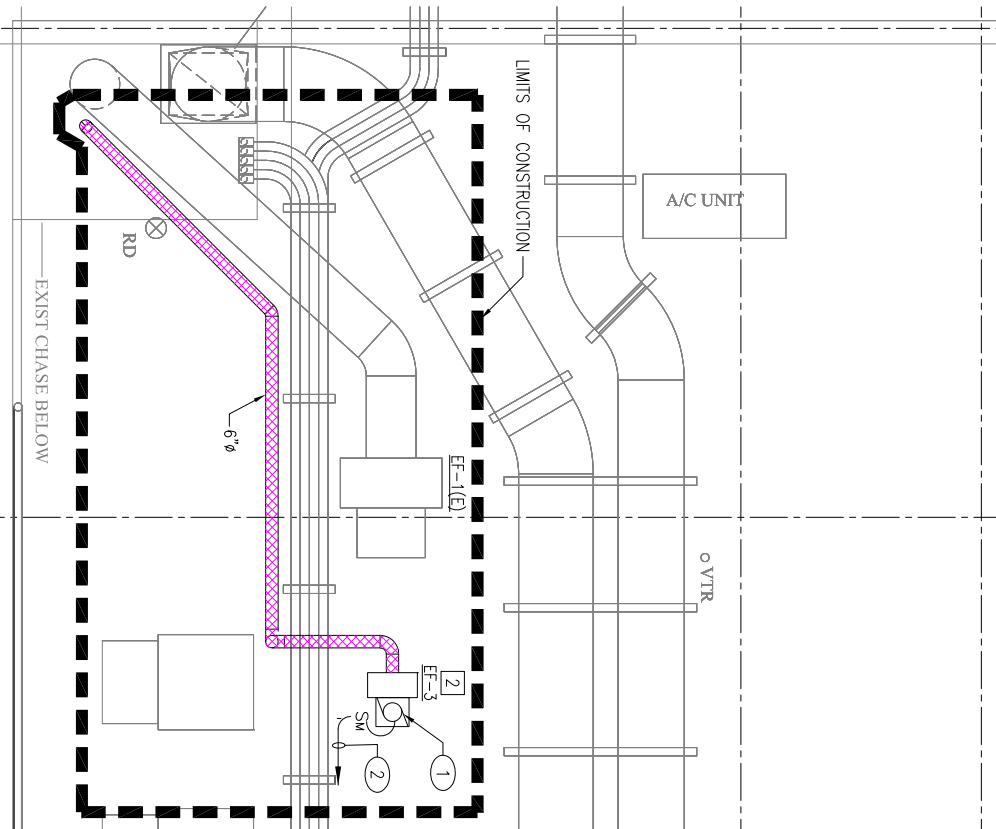
THIRD PLAN - NEW WORK
SCALE: 1/4" = 1'-0"



CRAWL SPACE PIPING PLAN - NEW WORK
SCALE: 1/4" = 1'-0"



ROOF PLAN - NEW WORK
SCALE: 1/4" = 1'-0"



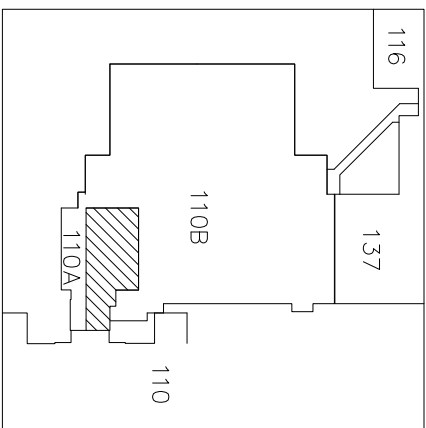
NEW WORK MECHANICAL NOTES

- 6" STAINLESS STEEL ETO EXHAUST DUCTWORK UP AND DOWN IN SHIRT.
- UTILITY SET EXHAUST FAN. SEE DETAIL, SCHEDULE AND CONTROL DRAWING, SHEET ME601.
- EXISTING/RELOCATED STEAM TRAP. SEE END OF MAIN DRIP DETAIL, SHEET ME601.
- 1/2" MPS AND 3/4" MPC UP TO CART WASH EQUIPMENT ABOVE.
- PROVIDE NEW/EXISTING CONNECTION TO EXISTING STEAM STERILIZER. PIPING SHALL MATCH EXISTING.

NEW WORK ELECTRICAL NOTES

- EF-3, 1/3HP, 120V.
- 20A CIRCUIT, 2#12, 1#120, 3/4"C. ASSUME 150 LF TO CLOSEST POWER SOURCE.

KEY PLAN



1/4" = 1'-0"

