



REMARKS

1. REMOVE GYPSUM BD/METAL STUD
PARTITION AS INDICATED =====

ASBESTOS ABATEMENT SCHEDULE								
ROOM	FLOOR	WALL					CEILING	REMARKS
		N	E	S	W			
TENT ENCLOSURE -		TE 1A						
A606		-	-	-	-	-		1,2
TENT ENCLOSURE -		TE 1B						
B603		-	-	-	-	-		1,2
WORK AREA 1								
A606	F3	-	-	-	-	-		1
B601	F1	-	-	-	-	-		1
B603	F1	-	-	-	-	-		1
B605	F1	-	-	-	-	-		1

FLOOR

F1- REMOVE FLOOR TILE, ADHESIVE AND FLOOR LEVELING COMPOUND (IF ANY) 

F3- REMOVE CARPET TILE AND ADHESIVE, FLOOR TILE, ADHESIVE AND FLOOR LEVELING COMPOUND (IF ANY) 

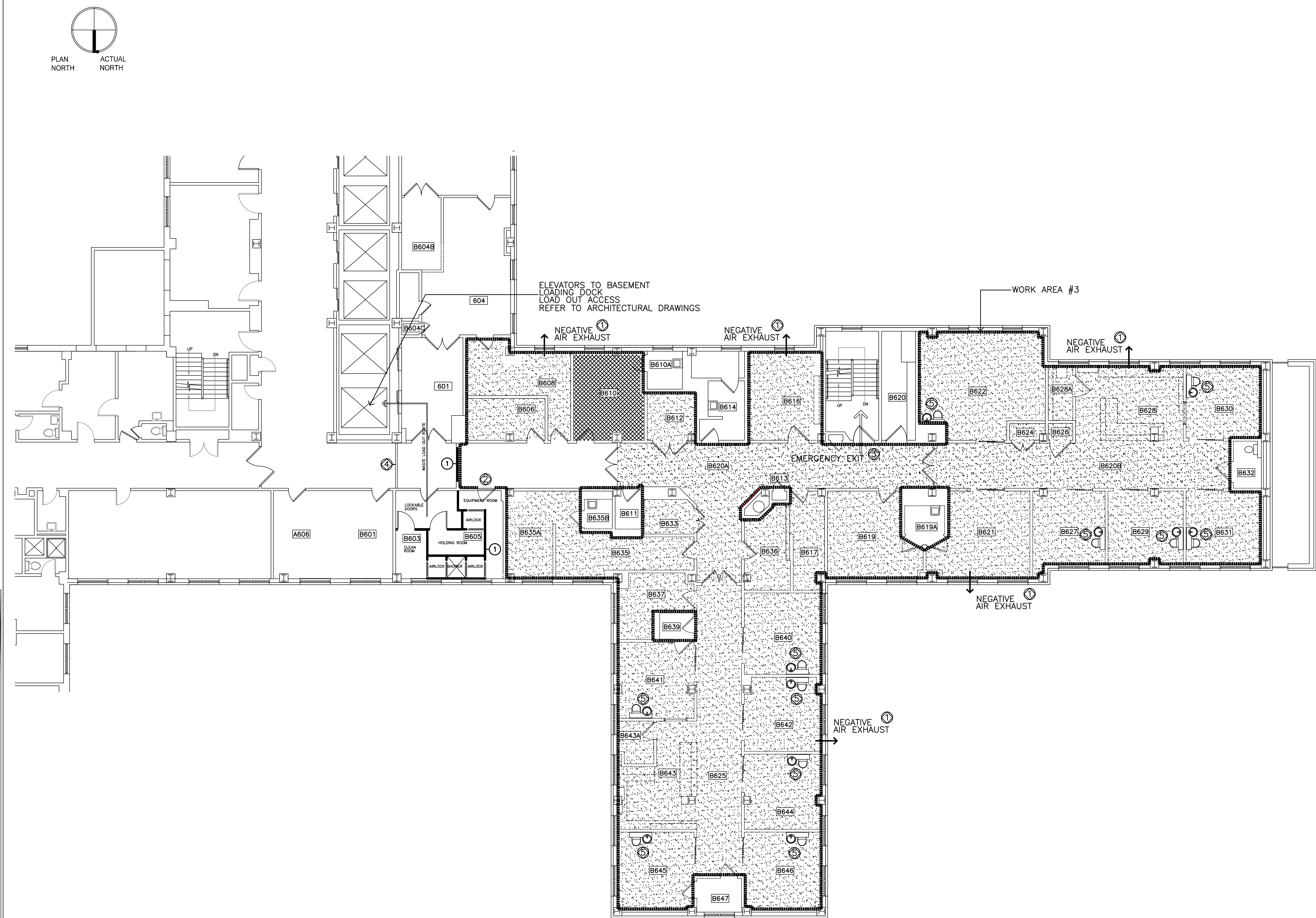
REMARKS

1- REFER TO PRE-ABATEMENT SELECTIVE DEMOLITION SCHEDULE

2- REMOVE THERMAL PIPE AND PIPE FITTING INSULATION
INSULATION AT CONCRETE FLOOR SLAB
PENETRATIONS SHALL BE REMOVED TO A DEPTH OF 3" BELOW TOP OF SLAB
CARE SHALL BE TAKEN NOT TO PENETRATE THRU SLAB TO FLOOR BELOW



three inches = one foot
one and one half inches = one foot
one inch = one foot
three quarters inch = one foot
one half inch = one foot
one quarter inch = one foot
one eighth inch = one foot



1
HA3
PARTIAL SIXTH FLOOR PLAN WEST
SCALE: 1/8"=1'-0"

PRE-ABATEMENT SELECTIVE DEMOLITION NOTES

ALL SCHEDULED PRE-ABATEMENT SELECTIVE DEMOLITION SHALL REMAIN IN PLACE UNTIL CRITICAL BARRIERS HAVE BEEN ESTABLISHED, THE REMAINDER OF THE REGULATED ABATEMENT WORK AREA HAS BEEN PLASTICIZED, NEGATIVE AIR HAS BEEN ESTABLISHED, AND PERSONAL AND WASTE DECONTAMINATION ENCLOSURES HAVE BEEN CONSTRUCTED

SELECTIVE DEMOLITION COMPONENTS SHALL THEN BE REMOVED AND DISPOSED OF AS ASBESTOS WASTE OR DECONTAMINATED IF POSSIBLE.

COMPLETE REMAINING CRITICAL BARRIER CONSTRUCTION AS REQUIRED PRIOR TO COMMENCEMENT OF PHASE IIB ABATEMENT

GENERAL NOTES

- COORDINATE HVAC, PLUMBING AND ELECTRICAL SHUT DOWNS WITH MEP CONTRACTORS
- FIRE DETECTION AND PROTECTION SYSTEMS SHALL REMAIN IN SERVICE. REQUIRED SHUTDOWNS SHALL BE COORDINATED WITH BUILDING MAINTENANCE DEPARTMENT AND LOCAL FIRE DEPARTMENT
- REMOVE NON-FRIABLE FLOOR TILE AND MASTIC IN COMPLIANCE WITH SUBPART 56-11.7 AND/OR APPLICABLE VARIANCE AV-A-3
- CONTRACTOR SHALL PROVIDE DOCUMENTATION THAT CHEMICAL MASTIC REMOVAL PRODUCT USED ARE COMPATIBLE WITH PROPOSED NEW FLOOR FINISHES
- REFER TO SPECIFICATIONS FOR PCB BALLAST AND FLUORESCENT TUBE REMOVAL, AND PACKAGING PROCEDURES. TURN PACKAGED ITEMS OVER TO VA FOR DISPOSAL AS DIRECTED BY ARCHITECT
- PERSONAL AND WASTE DECON SHALL BE CONSTRUCTED AT LOCATION INDICATED
A. REMOTE DECON WILL NOT BE ALLOWED ON THIS PROJECT

KEYED NOTES

- REMOVE WINDOW SASH- REINSTALL AT COMPLETION OF WORK
- REMOVE DOOR
- PROVIDE EMERGENCY EXIT PANEL IN CONTAINMENT ENCLOSURE
- TEMPORARY WALL BY GC CONTRACT
- REMOVE WATER CLOSET/LAV UNIT, MAKE AVAILABLE TO COR FOR SALVAGE

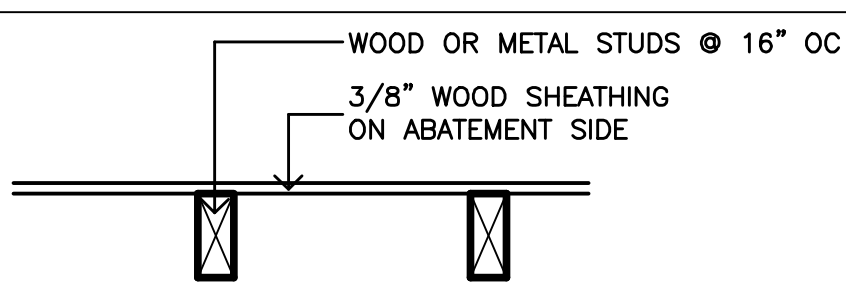
WORK SCHEDULE

- ACTUAL DATES MUST BE CONFIRMED AND COORDINATED WITH OWNER/PROJECT MANAGER
- ALLOCATED TIME:
WORK AREA 3: REGULAR WORK HOURS

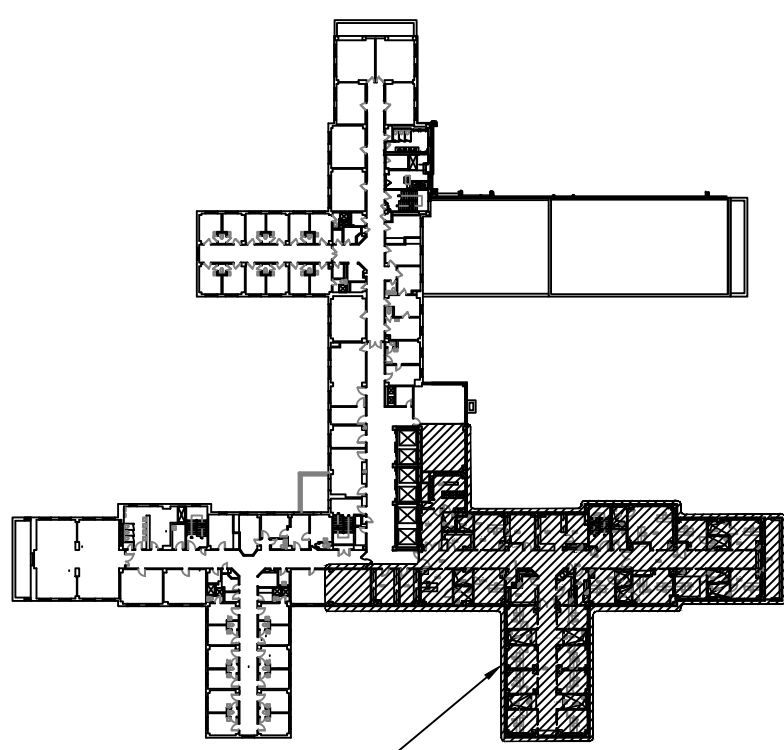
POST-ABATEMENT DEMOLITION NOTES

- POST-ABATEMENT SELECTIVE DEMOLITION SHALL BE PERFORMED WITHIN NEGATIVE AIR CONTAINMENT AS SPECIFIED FOR ABATEMENT PROCEEDURES
- REFER TO FOLLOWING DWG'S FOR POST ABATEMENT SELECTIVE DEMOLITION

AD-100 PD-151
AD-101 PD-161
MD-101 FX-101
ED-101



1
WALL TYPE
NO SCALE



KEY PLAN - SIXTH FLOOR
SCALE: NONE

PRE-ABATEMENT SELECTIVE DEMOLITION SCHEDULE

ROOM	FLOOR	WALLS				CEILING	REMARKS
		N	E	S	W		
WORK AREA 3							
B606	-	SDW1	SDW1	SDW1	SDW1	-	-
B608	-	SDW1	SDW1	SDW1	SDW1	-	-
B610	-	SDW1	SDW1	SDW1	SDW1	-	1
B612	-	SDW1	SDW1	SDW1	SDW1	-	1
B616	-	SDW1	SDW1	SDW1	SDW1	-	1
B617	-	SDW1	SDW1	SDW1	SDW1	-	1
B619	-	SDW1	SDW1	SDW1	SDW1	-	1
B620A	-	SDW1	SDW1	SDW1	SDW1	-	-
B620B	-	SDW1	SDW1	SDW1	SDW1	-	-
B621	-	SDW1	SDW1	SDW1	SDW1	-	1
B622	-	SDW1	SDW1	SDW1	SDW1	-	-
B624	-	SDW1	SDW1	SDW1	SDW1	-	-
B625	-	SDW1	SDW1	SDW1	SDW1	-	-
B626	-	SDW1	SDW1	SDW1	SDW1	-	-
B627	-	SDW1	SDW1	SDW1	SDW1	-	1
B628	-	SDW1	SDW1	SDW1	SDW1	-	1
B628A	-	SDW1	SDW1	SDW1	SDW1	-	1
B629	-	SDW1	SDW1	SDW1	SDW1	-	1
B630	-	SDW1	SDW1	SDW1	SDW1	-	1
B631	-	SDW1	SDW1	SDW1	SDW1	-	1
B633	-	SDW1	SDW1	SDW1	SDW1	-	1
B635	-	SDW1	SDW1	SDW1	SDW1	-	1
B635A	-	SDW1	SDW1	SDW1	SDW1	-	1
B636	-	SDW1	SDW1	SDW1	SDW1	-	1
B637	-	SDW1	SDW1	SDW1	SDW1	-	1
B640	-	SDW1	SDW1	SDW1	SDW1	-	1
B641	-	SDW1	SDW1	SDW1	SDW1	-	1
B642	-	SDW1	SDW1	SDW1	SDW1	-	1
B643	-	SDW1	SDW1	SDW1	SDW1	-	1
B643A	-	SDW1	SDW1	SDW1	SDW1	-	1
B644	-	SDW1	SDW1	SDW1	SDW1	-	1
B645	-	SDW1	SDW1	SDW1	SDW1	-	1
B646	-	SDW1	SDW1	SDW1	SDW1	-	1

WALL
SDW1- REMOVE VINYL BASE

CEILING
SDC1- REMOVE METAL PAN CEILING TILES
REFER TO DETAIL 3/HA1

REMARKS
1. REMOVE INDICATED WALLS AND ASSOCIATED COMPONENTS IN THEIR ENTIRETY

ASBESTOS ABATEMENT SCHEDULE

ROOM	FLOOR	WALL				CEILING	REMARKS
		N	E	S	W		
WORK AREA 3		NON-FRIABLE MATERIALS					
B606	F1	-	-	-	-	-	1
B608	F1	-	-	-	-	-	1
B610	F3	-	-	-	-	-	1
B612	F1	-	-	-	-	-	1
B616	F1	-	-	-	-	-	1
B617	F1	-	-	-	-	-	1
B619	F1	-	-	-	-	-	1
B620A	F1	-	-	-	-	-	1
B620B	F1	-	-	-	-	-	1
B621	F1	-	-	-	-	-	1
B622	F1	-	-	-	-	-	1
B624	F1	-	-	-	-	-	1
B625	F1	-	-	-	-	-	1
B626	F1	-	-	-	-	-	1
B627	F1	-	-	-	-	-	1
B628	F1	-	-	-	-	-	1
B628A	F1	-	-	-	-	-	1
B629	F1	-	-	-	-	-	1
B630	F1	-	-	-	-	-	1
B631	F1	-	-	-	-	-	1
B633	F1	-	-	-	-	-	1
B635	F1	-	-	-	-	-	1
B635A	F1	-	-	-	-	-	1
B636	F1	-	-	-	-	-	1
B637	F1	-	-	-	-	-	1
B640	F1	-	-	-	-	-	1
B641	F1	-	-	-	-	-	1
B642	F1	-	-	-	-	-	1
B643	F1	-	-	-	-	-	1
B643A	F1	-	-	-	-	-	1
B644	F1	-	-	-	-	-	1
B645	F1	-	-	-	-	-	1
B646	F1	-	-	-	-	-	1

FLOOR
F1- REMOVE FLOOR TILE, ADHESIVE AND FLOOR LEVELING COMPOUND (IF ANY)
F3- REMOVE CARPET TILE AND ADHESIVES

REMARKS
1- REFER TO PRE-ABATEMENT SELECTIVE DEMOLITION SCHEDULE

Revisions	Date



SMSA Architectural Services

9489 CROOKED HILL ROAD
CARSVILLE, NEW YORK 13318-0026
TEL: 516.726.6499
FAX: 315.839.5280

E-MAIL: smasrch@man.com



ASBESTOS DESIGNER CERT. NO. 89-00937

Reviewed: Facility Manager
Reviewed: Facility Director
Reviewed:
Reviewed:

Drawing Title
ASBESTOS ABATEMENT
Approved: Project Director

Project Title
RENOVATION FOR 6B WARD
Building Number
Location
Checked SMS
Drawn DJH
VAMC SYRACUSE, NY

Date
10-15-2014
Project No.
528A7-13-745
DRAWING NO.
HA3
Dwg. 7 of 81

