

GENERAL NOTES

3. FIRE PROTECTION SPRINKLER INSTALLATION SHALL MEET THE REQUIREMENTS OF THE FOLLOWING:
 - A. NFPA 13 AND 14, 2013 ED. & 101 ED. 2012.
 - B. LOCAL AND STATE REGULATIONS AND BC 2010 ED.
 - C. DVA FIRE PROTECTION MANUAL; SIXTH ED.; REVISED SEPTEMBER 2011.
2. SPRINKLER HEADS SHALL BE FM APPROVED QUICK RESPONSE IN ALL AREAS EXCEPT WHERE SPECIFICALLY PROHIBITED, IN COMPLIANCE WITH VA GUIDELINES AND NFPA REQUIREMENTS.
3. SPRINKLERS THROUGHOUT THE BUILDING TO BE ORDINARY TEMPERATURE RATED EXCEPT FOR ELECTRICAL ROOMS/CLOSETS, HEADS LOCATED WITH 15' OF AUTOCLOSE SHALL BE INTERMEDIATE TEMPERATURE RATED AND MECHANICAL ROOMS TO BE PROVIDED WITH HIGH TEMPERATURE RATED HEADS.
4. SPRINKLER PIPE SIZES AND SPRINKLER HEAD LOCATIONS SHALL CONFORM TO NFPA REQUIREMENTS. SPRINKLER HEADS INDICATED ON DRAWINGS ARE FOR DESIGN COORDINATION AND BUDGETARY PRICING ONLY.
5. PIPE HANGERS INCLUDING SEISMIC PROTECTION TO BE INSTALLED AS REQUIRED BY N.F.P.A. FOR SUPPORTING SPRINKLER PIPING. NO OTHER PIPING AND/OR DEVICES ARE TO BE ATTACHED TO THE SPRINKLER PIPE.
6. PIPING SHALL NOT BE LOCATED IN ANY ELECTRICAL ROOMS/CLOSETS OR TELECOMMUNICATION ROOMS/CLOSETS UNLESS THOSE PIPES SERVE ONLY THAT SPACE.
7. ALL SPRINKLER PIPE TO MAINTAIN A 6" - 0" MIN VERTICAL CLEARANCE FROM TOP OF ELECTRICAL CONTROL PANELS & SWITCHGEAR/TRANSFORMERS.
8. PROVIDE SPRINKLER ZONE FLOOR CONTROL VALVE ASSEMBLY CONSISTING OF CONTROL VALVE, CHECK VALVE, FLOW SWITCH, SELF-CONTAINED TEST AND DRAIN ASSEMBLY AND PRESSURE GAUGE, ON THE SPRINKLER MAIN BRANCH SERVING EACH FLOOR.
9. INSTALL PIPING SO THAT VALVES ARE ACCESSIBLE AND STEMS EXTEND VERTICALLY UP. ALL CONTROL VALVES SHALL BE EQUIPPED WITH TAMPER SWITCHES.
10. ALL WATER FLOW SWITCHES MUST BE ISOLATED BY MEANS OF A FITTING OR UNION ON BOTH SIDE TO FACILITATE REMOVAL AND SERVICE OF THE FLOW SWITCH.
11. THE FIRE PROTECTION CONTRACTOR SHALL PROVIDE THE QUANTITY OF SPRINKLER HEADS AS REQUIRED TO MAINTAIN THE MINIMUM COVERAGE REQUIRED BY NFPA 113 IS ALL AREAS THE BUILDING.
12. COORDINATE THE EXACT LOCATION OF ALL SPRINKLER HEADS, PIPING, EQUIPMENT, AND DEVICES WITH ARCHITECTURAL DRAWINGS AND THE RESPECTIVE DRAWINGS OF PIPING, DUCTWORK, DIFFUSERS, BEAMS, LIGHTS, ETC. THIS CONTRACTOR SHALL VERIFY THE EXACT LOCATION OF THESE COMPONENTS IN THE FIELD AND DOCUMENT ON THEIR SUBMITTALS.
13. PROVIDE COMPLETE AND FUNCTIONAL FIRE PROTECTION SYSTEMS FOR THE PROJECT. THE SYSTEMS SHALL CONFORM TO THE SPECIFICATIONS AND AS SHOWN ON DRAWINGS. ITEMS OR WORK NOT SHOWN OR SPECIFIED, BUT REQUIRED FOR COMPLETE SYSTEMS, SHALL BE PROVIDED AND CONFORM TO ACCEPTED TRADE PRACTICES. THE DRAWINGS AND SPECIFICATIONS ARE PRESENTED TO THE PROJECT AS A GUIDE ONLY. THE CONTRACTOR SHALL EXPAND ON THE PRIMARY CONTRACT REQUIREMENTS OF PROVIDING COMPLETE SYSTEMS, THE DRAWINGS ARE DIAGRAMMATIC AND INDICATE THE GENERAL ARRANGEMENT AND ROUTING OF THE SYSTEMS INCLUDED IN THIS CONTRACTORS WORK.
14. THESE DRAWINGS WERE PREPARED FROM INFORMATION TAKEN FROM THE ORIGINAL BUILDING DRAWINGS AND FIELD SURVEY INFORMATION COMPILED BY THE ENGINEERING DESIGN TEAM FOR THE PURPOSE OF ENGINEERING DESIGN. EXISTING CONDITIONS ARE SHOWN AS ACCURATELY AS POSSIBLE. THERE IS THE POSSIBILITY THAT CONDITIONS SHOWN ARE NOT EXACTLY AS EXISTING. CONTRACTOR SHALL VERIFY ALL DIMENSIONS, ELEVATIONS, LOCATIONS, SIZES AND CONDITIONS AT THE SITE AND DOCUMENT THAT ON THEIR SUBMITTALS.
15. THE CONTRACTOR WILL BE RESPONSIBLE FOR ENSURING THAT ALL RULES AND REGULATIONS, INCLUDING THOSE WHICH MAY BE ISSUED BY THE OWNER, ARE BEING OBSERVED, PARTICULARLY WORKPLACE SAFETY AND THE CONDUCT OF ALL THOSE EMPLOYED DIRECTLY AND INDIRECTLY BY HIM ON THE PREMISES, AND THE OWNER'S EMPLOYEES WHO MAY BE IMPACTED OR AFFECTED BY CONSTRUCTION ACTIVITIES. THE CONTRACTOR WILL INSTALL SIGNAGE, BARRIERS, AND OTHER MEANS TO PROVIDE WARNING AND PERSONNEL SAFETY. PLACEMENT OF SIGNAGE SHALL BE COORDINATED WITH THE OWNER AND HIS ONGOING OPERATIONS AND WILL PROMPTLY BE RESTORED WHEN WORK IN A PARTICULAR AREA HAS BEEN COMPLETED.
16. CONTRACTOR SHALL MAKE ALL NECESSARY SUBMISSIONS AND OBTAIN ALL NECESSARY PERMITS AND APPROVALS PRIOR TO STARTING FABRICATION AND CONSTRUCTION.

FIRE PROTECTION DESIGN CRITERIA

1. SYSTEM TYPE; WET PIPE
 - a. SPRINKLER HEAD SPACING AND PIPE SIZING SHALL BE:
 - a. TOILET ROOMS, TESTING AND OFFICE AREAS; LIGHT HAZARD (0.10 GPM/SQ.FT. OVER 1500 SQ.FT, 225 SQ.FT. PER SPRINKLER HEAD)
 - b. STORAGE ROOMS; ORDINARY GROUP II HAZARD (0.20 GPM/SQ.FT. OVER 1500 SQ.FT, 130 SQ.FT. PER SPRINKLER HEAD)
2. PROVIDE FOR AN ADDITIONAL WATER ALLOWANCE OF 250 GPM FOR INSIDE AND OUTSIDE HOSE STREAMS TO THE SPRINKLER HYDRAULIC REQUIREMENTS.
3. THE CALCULATED DEMAND INCLUDING HOSE STREAM REQUIREMENTS SHALL FALL NO LESS THAN 10 PERCENT BELOW THE AVAILABLE WATER SUPPLY.
4. SYSTEM SHALL BE DESIGNED ON A HYDRAULICALLY CALCULATED BASIS UTILIZING THE AREA DENSITY METHOD PER THE NFPA 13 BY THE SPRINKLER CONTRACTOR. CALCULATIONS AND SHOP DRAWINGS SHALL BE SIGNED AND SEALED BY A PROFESSIONAL ENGINEER LICENSED IN THE STATE OF NEW YORK.
5. SPRINKLER PIPE SIZES SHALL BE DETERMINED BY HYDRAULIC CALCULATIONS BASED ON EXISTING FIRE PUMP HYDRAULIC FLOW TEST DATA (SEE VAMC-STROUSE FOR CURRENT PUMP TEST DATA PRIOR TO START OF WORK).
 - DATE: - OCTOBER 28, 2013
 - SUCTION PRESSURE - 45 PSIG
 - DISCHARGE PRESSURE - 180 PSIG
 - RATED FIRE PUMP FLOW - 1000 GPM

LEGEND

	EXISTING		ABV CLG	ABOVE THIS CEILING
	FIRE PIPING		BLW FLR	BELOW THIS FLOOR
	SPRINKLER PIPING		(E)	EXISTING
	DRY SPRINKLER PIPING		EC	ELECTRICAL CONTRACTOR
	SPRINKLER DRAIN PIPING		FC	FIRE PROTECTION CONTRACTOR
	CHECK VALVE		PC	PLUMBING CONTRACTOR
	CONTROL VALVE		FHV	FIRE HOSE VALVE
	INSPECTORS TEST FITTING		FDC	FIRE DEPARTMENT CONNECTION
	PRESSURE GAUGE		SPR	SPRINKLER
	GROUND FACE UNION OR FLANGES			
	WATERFLOW SWITCH			
	TAMPER SWITCH			
	PENDENT SPRINKLER HEAD			
	RECESSED PENDENT SPRINKLER HEAD			
	UPRIGHT SPRINKLER HEAD			
	SIDEWALL SPRINKLER HEAD			
	1 HR FIRE RATED WALL			
	2 HR FIRE RATED WALL			
	SMOKE WALL			
	AREA OF WORK			

**BID DOCUMENTS
FULLY SPRINKLERED**

[illegible]

VA FORM 08-6231



Reviewed: Facility Manager
Reviewed: Facility Director
Reviewed:
Reviewed:

<p>Drawing Title</p> <p>FIRE PROTECTION NOTES, LEGEND AND DETAILS</p>
<p>Approved: Project Director</p>

Project Title		
RENOVATION FOR 6B WARD		
Building Number	Checked	Drawn
NO. 1	MC	PD
Location		
VAMC SYRACUSE, NY		

Date
10-15-2014

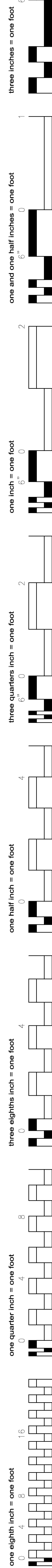
Project No.
528A7-13-745

DRAWING NO.
FX-001


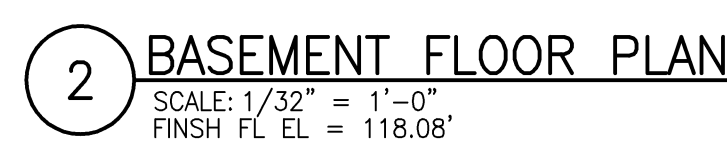
Dwg. **57** Of **81**



Department of
Veterans Affairs



1. REMOVE EXISTING FIRE HOSE VALVE IN CLOSET AND CAP PIPE AT STANDPIPE TO REMAIN.
2. EXISTING SPRINKLERS TO REMAIN IN THIS AREA.



VA HEALTHCARE NETWORK
UPSTATE NEW YORK

Department of Veterans Affairs

[illegible]

Miller-Remick LLC
 M.E.P. & Structural Engineering
 A Service Disabled Veteran Owned
 Small Business

1010 KINGS HIGHWAY SOUTH
 CHERRY HILL, NEW JERSEY 08034
 PHONE: (856)429-4000
 FAX: (856)429-5002

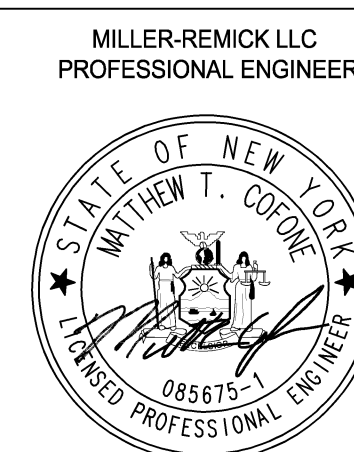


SDVOSB

**QPK
DESIGN**
ARCHITECTURE
ENGINEERING
SITE & PLANNING

450 SO. SALINA STREET P.O. BOX 29
STRAUSBURG, NEW YORK 12581-0029
TEL 315.472.7806 FAX 315.472.7800

QPK Job Number: 213247.00



Reviewed: Facility Manager
Reviewed: Facility Director
Reviewed:
Reviewed:

Drawing Title

FIRE PROTECTION

6TH FLOOR PLAN

Approved: Project Director

Project Title		
RENOVATION FOR 6B WARD		
Building Number	Checked	Drawn
NO. 1	MC	PD
Location		
VAMC SYRACUSE, NY		

Date	10-15-2014
Project No.	528A7-13-745
DRAWING NO.	FX-101
Drawn	58 Of 81