

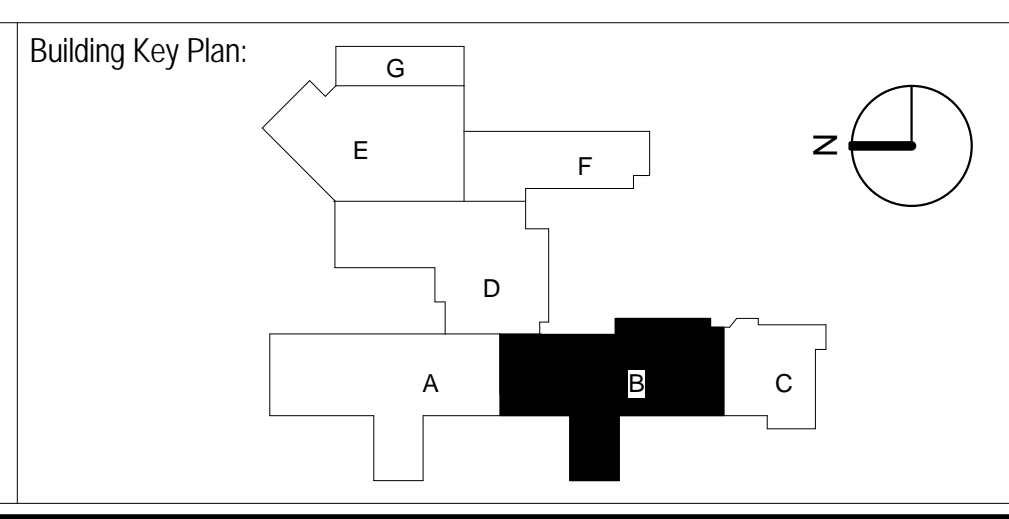
1 LEVEL 1 - AREA B  
3/16" = 1'-0"

NO	DESCRIPTION	DATE
0	100% SUBMITTAL	01/21/2014

**ARCHITECTS/ENGINEERS:**

**Burns & McDonnell**  
SINCE 1898

9400 Ward Parkway  
Kansas City, MO 64114  
Phone: (816) 333-0400  
Fax: (816) 822-3321  
http://burnsmcd.com



FACILITIES MANAGEMENT  
FLOOR PLAN DRAWINGS

- FOR REFERENCE ONLY -  
NOT FOR  
CONSTRUCTION



**VA EASTERN KANSAS HEALTH  
CARE SYSTEM**

Dwight D. Eisenhower VA Medical Center, Leavenworth  
Colmery-O'Neil VA Medical Center, Topeka

Drawing Title:  
**LEVEL 1 - AREA B**

Scale:  
**3/16" = 1'-0"**

Approved:

Project Title:  
**VA RTLS  
HOSPITAL**

Building Number:  
**1**

Checked By:  
**AS**

Drawn By:  
**TC**

Location:  
Colmery-O'Neil VA Medical Center,  
Topeka

Date:  
01/21/2014

Project No.  
74344

Drawing No.  
**AE211**

Dwg. Of

Department of  
Veterans Affairs