



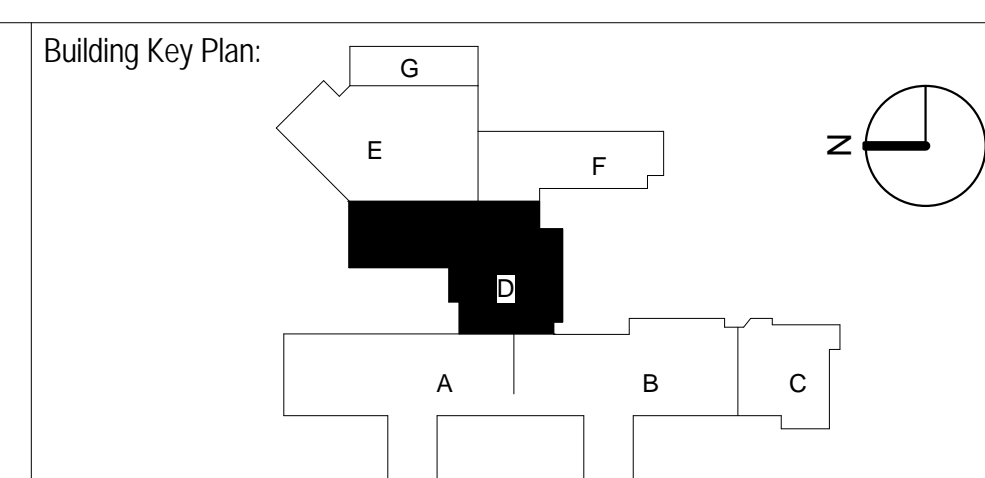
① LEVEL 4 - AREA D
 $\frac{3}{16}'' = 1'-0''$

[illegible]

ARCHITECTS/ENGINEERS:

The logo for Burns & McDonnell is a blue rectangular box with a white border. Inside the box, the text "Burns & McDonnell" is written in a white serif font, with "Burns &" on the top line and "McDonnell" on the bottom line. Below this text, the words "SINCE 1898" are written in a smaller, white, sans-serif font.

9400 Ward Parkway
Kansas City, MO 64114
Phone: (816) 333-9400
Fax: (816) 822-3321
<http://burnsmcd.com>



FACILITIES MANAGEMENT
FLOOR PLAN DRAWINGS

- FOR REFERENCE ONLY -
NOT FOR
CONSTRUCTION



**VA EASTERN KANSAS HEALTH
CARE SYSTEM**

Dwight D. Eisenhower VA Medical Center, Leavenworth
Colmery-O'Neil VA Medical Center, Topeka

Drawing Title: **LEVEL 4 - AREA D**

Scale: **$3/16" = 1'-0"$**

0 4' 8' 12'

SCALE IN FEET

Approved: _____

Project Title:		
<div> <div>VA</div> <div>RTL</div> <div>S</div> <div>HOSPITAL</div> </div>		
Building Number:	Checked By:	Drawn By:
1	AS	TC
Location: Colmery-O'Neill VA Medical Center, Topeka		

Date:	01/21/2014
Project No.	74344
Drawing No.	AE243
Dwg.	Of

**Department of
Veterans Affairs**