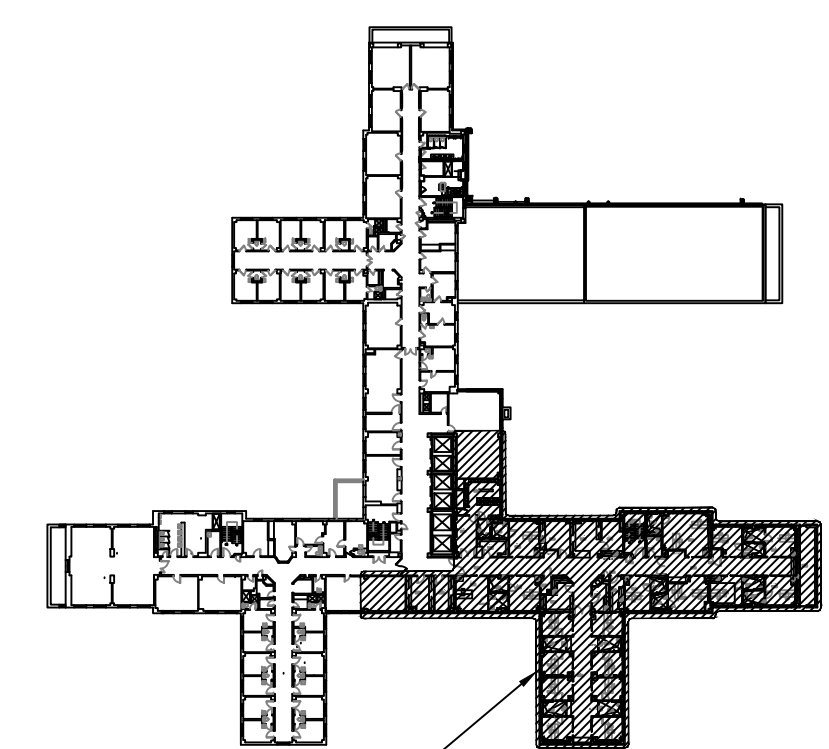


WALL TYPE
NO SCALE



KEY PAN - SIXTH FLOOR
SCALE: NONE



ROOM	FLOOR	WALLS				CEILING	REMARKS
		N	E	S	W		
TENT ENCLOSURE (TE) 1A & 1B							
A606	—	—	—	—	SDW1	SDC1	1
B601	—	—	SDW1	—	SDW1	SDC1	1
B603	—	—	SDW1	—	SDW1	SDC1	1
B605	—	—	SDW1	—	—	SDC1	1

WORK AREA 1							
A606	—	SDW1	SDW1	SDW1	—	—	—
B601	—	SDW1	—	SDW1	—	—	—
B603	—	SDW1	—	SDW1	—	—	—
B605	—	SDW1	—	SDW1	SDW1	—	—

WALL					
SDW1-	REMOVE VINYL BASE				

CEILING
SDC1- REMOVE PORTION OF METAL PAN CEILING
PER DETAIL 3/HA1

ROOM	FLOOR	WALL					CEILING	REMARKS
		N	E	S	W			
TENT ENCLOSURE- TE 1A								
A606		-	-	-	-	-	-	1,2
TENT ENCLOSURE- TE 1B								
B603		-	-	-	-	-	-	1,2
WORK AREA 1								
A606	F3	-	-	-	-	-	-	1
B601	F1	-	-	-	-	-	-	1
B603	F1	-	-	-	-	-	-	1
B605	F1	-	-	-	-	-	-	1

FLOOR	
F1-	REMOVE FLOOR TILE, ADHESIVE AND FLOOR LEVELING COMPOUND (IF ANY) 
F3-	REMOVE CARPET TILE AND ADHESIVE, FLOOR TILE, ADHESIVE AND FLOOR LEVELING COMPOUND (IF ANY) 

- 1- REFER TO PRE-ABATEMENT SELECTIVE
DEMOLITION SCHEDULE
- 2- REMOVE THERMAL PIPE AND PIPE FITTING
INSULATION
INSULATION AT CONCRETE FLOOR SLAB
PENETRATIONS SHALL BE REMOVED TO A
DEPTH OF 3" BELOW TOP OF SLAB
CARE SHALL BE TAKEN NOT TO
PENETRATE THRU SLAB TO FLOOR BELOW

[illegible]

9489 CROOKED HILL ROAD
CASSVILLE, NEW YORK 13318-0026
TEL 315.725.6499
FAX 315.839.5280

E-MAIL: smsearch@man.com



PROJECT DESIGNER CERT. NO. 88-00937

Reviewed: Facility Manager

Reviewed: Facility Director

Reviewed:

Reviewed:

Drawing Title

ASBESTOS ABATEMENT

Approved: Project Director

Project Title

RENOVATION FOR 6B WARD

Building Number

Checked

Drawn

Location
VAMC SYRACUSE, NY

Date	Particulars	Debit	Credit
	Balance b/d		
	By Cash		
	To Cash		
	By Bank		
	To Bank		
	By Sales		
	To Sales		
	By Purchases		
	To Purchases		
	By Salaries		
	To Salaries		
	By Rent		
	To Rent		
	By Interest		
	To Interest		
	By Dividend		
	To Dividend		
	By Profit		
	To Profit		
	By Balance c/d		
	To Balance c/d		

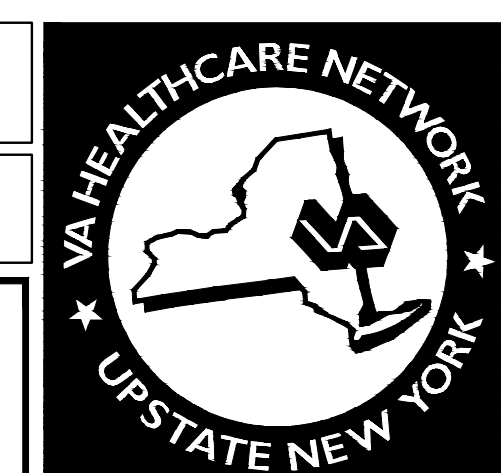
10-15-2014

528A7-13-745

	DRAWING NO.
--	-------------

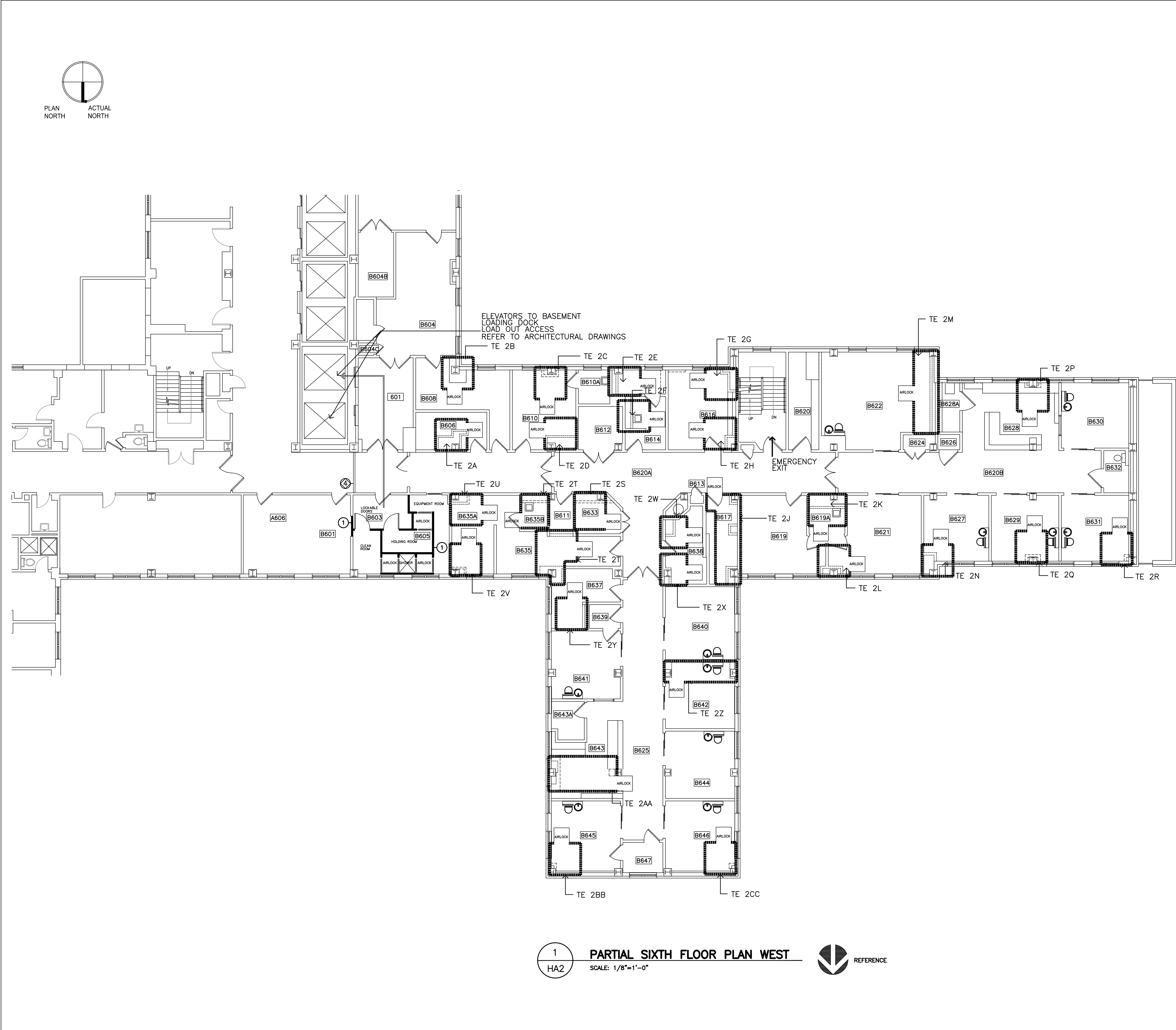
HA1

	THAT
--	------



Department of
Veterans Affairs

three inches = one foot
one and one half inches = one foot
one inch = one foot
three quarters inch = one foot
three eighths inch = one foot
one half inch = one foot
one quarter inch = one foot
one eighth inch = one foot



1
HA2
PARTIAL SIXTH FLOOR PLAN WEST
SCALE: 1/8"=1'-0"



WORK SEQUENCE FOR ABATEMENT CONTRACT

1. ESTABLISH REGULATED ABATEMENT WORK AREA
2. CONSTRUCT DECONTAMINATION AND WASTE LOAD OUT UNIT
3. PROVIDE NEGATIVE AIR EXHAUST AS INDICATED
4. PROCEED WITH ABATEMENT PER ASBESTOS ABATEMENT SCHEDULE AND SPECIFICATIONS

GENERAL NOTES

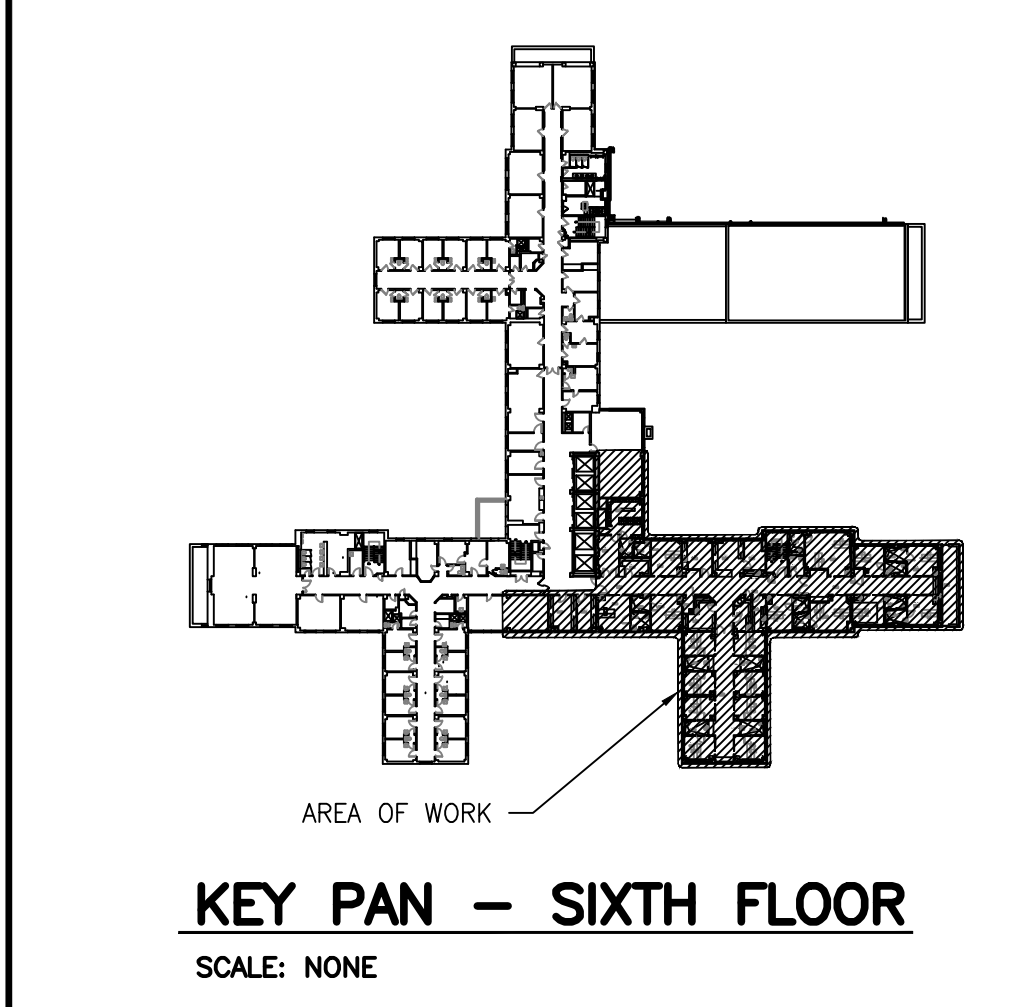
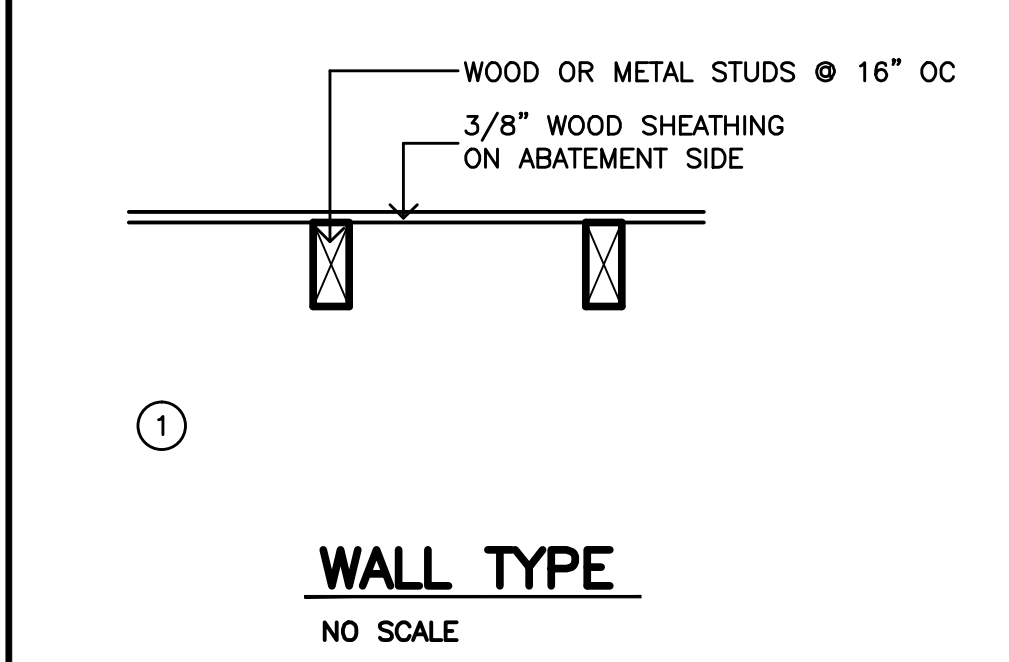
1. COORDINATE HVAC, PLUMBING AND ELECTRICAL SHUT DOWNS WITH MEP CONTRACTORS
2. FIRE DETECTION AND PROTECTION SYSTEMS SHALL REMAIN IN SERVICE. REQUIRED SHUTDOWNS SHALL BE COORDINATED WITH BUILDING MAINTENANCE DEPARTMENT AND LOCAL FIRE DEPARTMENT
5. REFER TO SPECIFICATIONS FOR PCB BALLAST AND FLUORESCENT TUBE REMOVAL AND PACKAGING PROCEDURES. TURN PACKAGED ITEMS OVER TO VA FOR DISPOSAL AS DIRECTED BY ARCHITECT
6. PERSONAL AND WASTE DECON SHALL BE CONSTRUCTED AT LOCATION INDICATED. A REMOTE DECON WILL NOT BE ALLOWED ON THIS PROJECT
7. ABATEMENT OF FRIABLE TSI IN TENT ENCLOSURES INDICATED SHALL BE PERFORMED PER 56-7.11 (f) (GLOVE BAG ABATEMENT)

KEYED NOTES

④ TEMPORARY WALL BY GC CONTRACT

WORK SCHEDULE

1. ACTUAL DATES MUST BE CONFIRMED AND COORDINATED WITH OWNER/PROJECT MANAGER
2. ALLOTTED TIME:
TENT ENCLOSURES: REGULAR WORK HOURS



PRE-ABATEMENT SELECTIVE DEMOLITION SCHEDULE

ALL SCHEDULED PRE-ABATEMENT SELECTIVE DEMOLITION SHALL REMAIN IN PLACE UNTIL CRITICAL BARRIERS HAVE BEEN CONSTRUCTED AND NEGATIVE AIR HAS BEEN ESTABLISHED AND PERSONAL AND WASTE DECONTAMINATION ENCLOSURES HAVE BEEN CONSTRUCTED

ROOM	FLOOR	WALLS				CEILING	REMARKS
		N	E	S	W		
TENT ENCLOSURE (TE) 2A THRU TE 2CC							
B606	-					SDC1	1
B608	-					SDC1	1
B610	-					SDC1	1
B614	-					SDC1	1
B616	-					SDC1	1
B617	-					SDC1	1
B619A	-					SDC1	1
B621	-					SDC1	1
B622	-					SDC1	1
B627	-					SDC1	1
B628	-					SDC1	1
B629	-					SDC1	1
B631	-					SDC1	1
B633	-					SDC1	1
B635	-					SDC1	1
B635A	-					SDC1	1
B635B	-					SDC1	1
B636	-					SDC1	1
B637	-					SDC1	1
B642	-					SDC1	1
B643	-					SDC1	1
B645	-					SDC1	1
B646	-					SDC1	1

CEILING
SDC1- REMOVE PORTION OF METAL PAN CEILING PER DETAIL 3/HA1

REMARKS

1. REMOVE GYPSUM BD/METAL STUD PARTITION AS INDICATED

ROOM	FLOOR	WALL				CEILING	REMARKS
		N	E	S	W		
TENT ENCLOSURE (TE) 2A THRU 2CC						FRIABLE	
B606	-	-	-	-	-	-	1,2
B608	-	-	-	-	-	-	1,2
B610	-	-	-	-	-	-	1,2
B614	-	-	-	-	-	-	1,2
B616	-	-	-	-	-	-	1,2
B617	-	-	-	-	-	-	1,2
B619A	-	-	-	-	-	-	1,2
B621	-	-	-	-	-	-	1,2
B622	-	-	-	-	-	-	1,2
B627	-	-	-	-	-	-	1,2
B628	-	-	-	-	-	-	1,2
B629	-	-	-	-	-	-	1,2
B631	-	-	-	-	-	-	1,2
B633	-	-	-	-	-	-	1,2
B635	-	-	-	-	-	-	1,2
B635A	-	-	-	-	-	-	1,2
B636	-	-	-	-	-	-	1,2
B637	-	-	-	-	-	-	1,2
B642	-	-	-	-	-	-	1,2
B643	-	-	-	-	-	-	1,2
B645	-	-	-	-	-	-	1,2
B646	-	-	-	-	-	-	1,2

REMARKS

- 1- REFER TO PRE-ABATEMENT SELECTIVE DEMOLITION SCHEDULE
- 2- REMOVE THERMAL PIPE AND PIPE FITTING INSULATION AT CONCRETE FLOOR SLAB PENETRATIONS SHALL BE REMOVED TO A DEPTH OF 3" BELOW TOP OF SLAB CARE SHALL BE TAKEN NOT TO PENETRATE THRU SLAB TO FLOOR BELOW

Revisions

Date

Miller-Remick LLC
M.E.P. & Structural Engineering
A Service Disabled Veteran Owned Small Business
1010 KINGS HIGHWAY SOUTH
CHERRY HILL, NEW JERSEY 08034
PHONE: (856) 428-4000
FAX: (856) 428-5002

SDVOSS
SERVICE DISABLED VETERAN OWNED SMAL BUSINESS

SMSA Architectural Services
9489 CROOKED HILL ROAD
CARLSVILLE, NEW YORK 13318-0026
TEL: 315.725.4499
FAX: 315.839.5280
E-MAIL: smsoarch@msn.com

REGISTERED ARCHITECT & MICHAEL STEINFELD
PROJECT DESIGNER CERT. NO. 89-00937

Reviewed: Facility Manager

Reviewed: Facility Director

Reviewed:

Reviewed:

Drawing Title
ASBESTOS ABATEMENT

Approved: Project Director

Project Title
RENOVATION FOR 6B WARD

Building Number
HA2

Checked
SMS

Drawn
DJH

Location
VAMC SYRACUSE, NY

Date
10-15-2014

Project No.
528A7-13-745

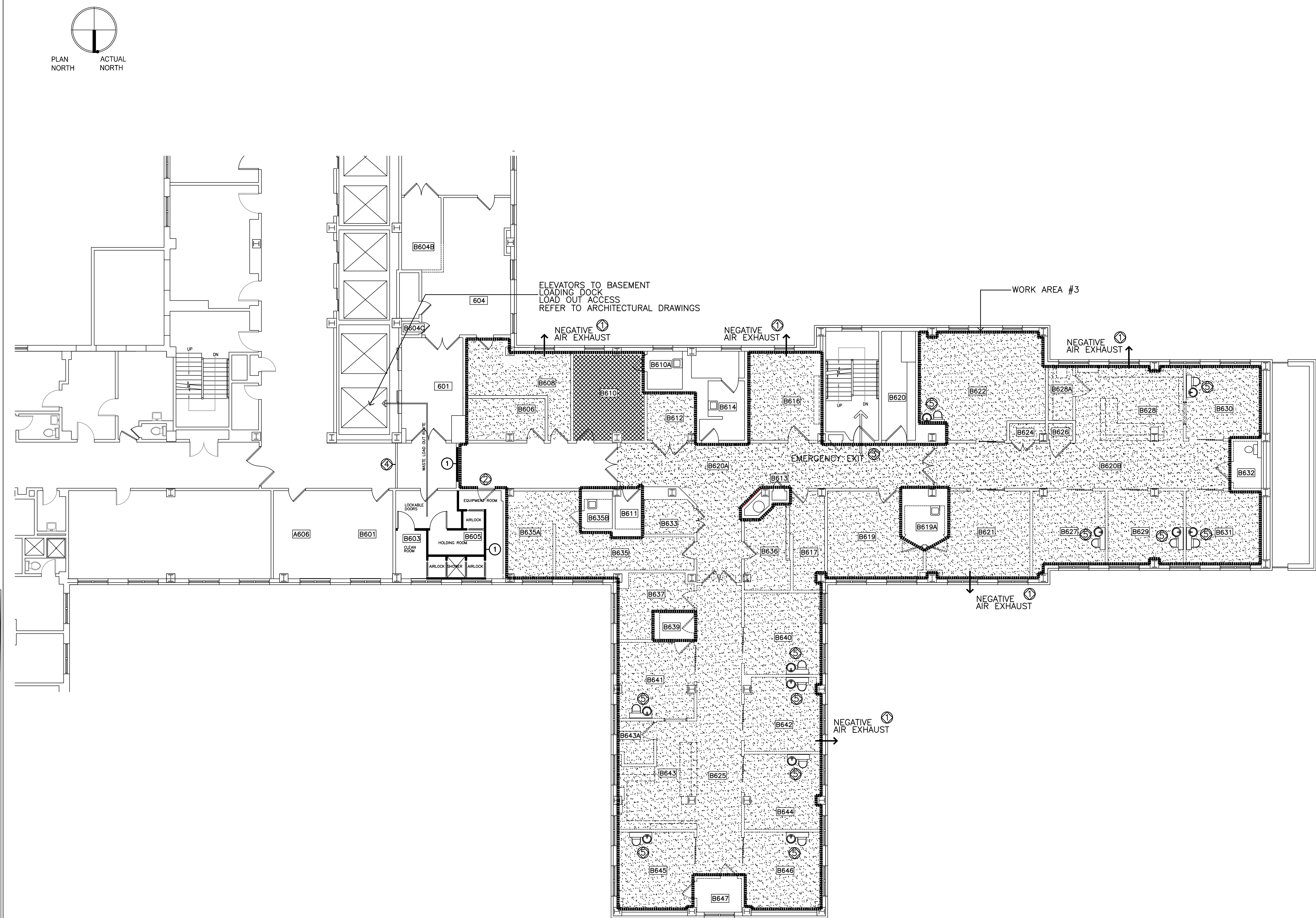
DRAWING NO.
HA2

Dwg. 6 of 81

VA HEALTHCARE NETWORK
UPSTATE NEW YORK

Department of Veterans Affairs

three inches = one foot
one and one half inches = one foot
one inch = one foot
three quarters inch = one foot
one half inch = one foot
one quarter inch = one foot
one eighth inch = one foot



1
HA3
PARTIAL SIXTH FLOOR PLAN WEST
SCALE: 1/8"=1'-0"

PRE-ABATEMENT SELECTIVE DEMOLITION NOTES

ALL SCHEDULED PRE-ABATEMENT SELECTIVE DEMOLITION SHALL REMAIN IN PLACE UNTIL CRITICAL BARRIERS HAVE BEEN ESTABLISHED, THE REMAINDER OF THE REGULATED ABATEMENT WORK AREA HAS BEEN PLASTICIZED, NEGATIVE AIR HAS BEEN ESTABLISHED, AND PERSONAL AND WASTE DECONTAMINATION ENCLOSURES HAVE BEEN CONSTRUCTED

SELECTIVE DEMOLITION COMPONENTS SHALL THEN BE REMOVED AND DISPOSED OF AS ASBESTOS WASTE OR DECONTAMINATED IF POSSIBLE.

COMPLETE REMAINING CRITICAL BARRIER CONSTRUCTION AS REQUIRED PRIOR TO COMMENCEMENT OF PHASE IIB ABATEMENT

GENERAL NOTES

- COORDINATE HVAC, PLUMBING AND ELECTRICAL SHUT DOWNS WITH MEP CONTRACTORS
- FIRE DETECTION AND PROTECTION SYSTEMS SHALL REMAIN IN SERVICE. REQUIRED SHUTDOWNS SHALL BE COORDINATED WITH BUILDING MAINTENANCE DEPARTMENT AND LOCAL FIRE DEPARTMENT
- REMOVE NON-FRIABLE FLOOR TILE AND MASTIC IN COMPLIANCE WITH SUBPART 56-11.7 AND/OR APPLICABLE VARIANCE AV-A-3
- CONTRACTOR SHALL PROVIDE DOCUMENTATION THAT CHEMICAL MASTIC REMOVAL PRODUCT USED ARE COMPATIBLE WITH PROPOSED NEW FLOOR FINISHES
- REFER TO SPECIFICATIONS FOR PCB BALLAST AND FLUORESCENT TUBE REMOVAL, AND PACKAGING PROCEDURES. TURN PACKAGED ITEMS OVER TO VA FOR DISPOSAL AS DIRECTED BY ARCHITECT
- PERSONAL AND WASTE DECON SHALL BE CONSTRUCTED AT LOCATION INDICATED
A. REMOTE DECON WILL NOT BE ALLOWED ON THIS PROJECT

KEYED NOTES

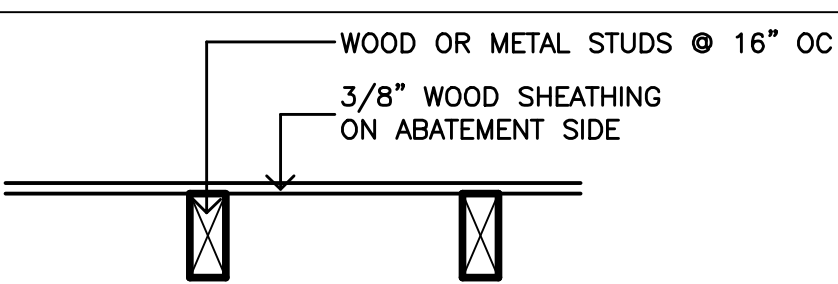
- REMOVE WINDOW SASH- REINSTALL AT COMPLETION OF WORK
- REMOVE DOOR
- PROVIDE EMERGENCY EXIT PANEL IN CONTAINMENT ENCLOSURE
- TEMPORARY WALL BY GC CONTRACT
- REMOVE WATER CLOSET/LAV UNIT, MAKE AVAILABLE TO COR FOR SALVAGE

WORK SCHEDULE

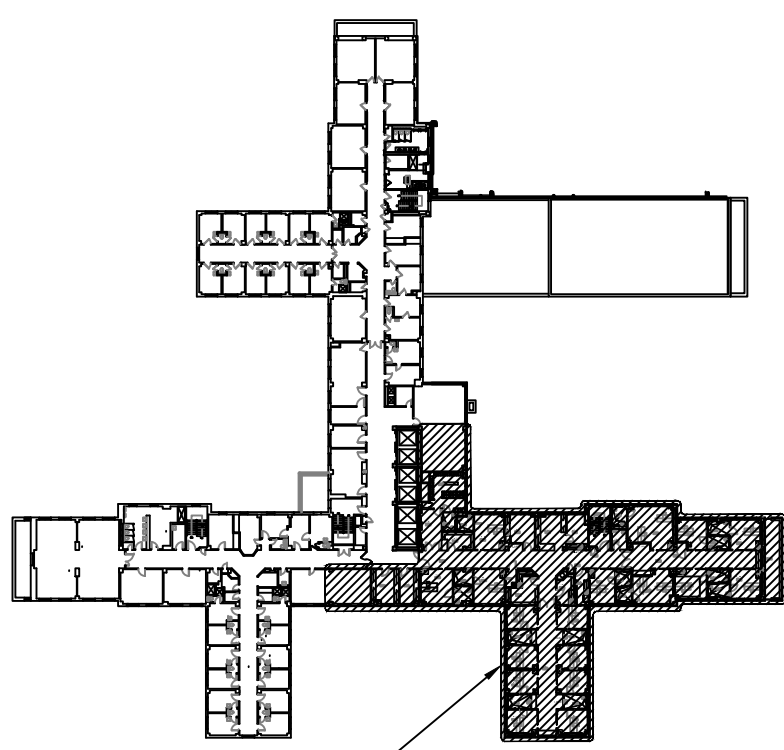
- ACTUAL DATES MUST BE CONFIRMED AND COORDINATED WITH OWNER/PROJECT MANAGER
- ALLOTTED TIME:
WORK AREA 3: REGULAR WORK HOURS

POST-ABATEMENT DEMOLITION NOTES

- POST-ABATEMENT SELECTIVE DEMOLITION SHALL BE PERFORMED WITHIN NEGATIVE AIR CONTAINMENT AS SPECIFIED FOR ABATEMENT PROCEEDURES
- REFER TO FOLLOWING DWG'S FOR POST ABATEMENT SELECTIVE DEMOLITION
AD-100 PD-151
AD-101 PD-161
MD-101 FX-101
ED-101



1
WALL TYPE
NO SCALE



KEY PLAN - SIXTH FLOOR
SCALE: NONE

PRE-ABATEMENT SELECTIVE DEMOLITION SCHEDULE

ROOM	FLOOR	WALLS				CEILING	REMARKS
		N	E	S	W		
WORK AREA 3							
B606	-	SDW1	SDW1	SDW1	SDW1	-	-
B608	-	SDW1	SDW1	SDW1	SDW1	-	-
B610	-	SDW1	SDW1	SDW1	SDW1	-	1
B612	-	SDW1	SDW1	SDW1	SDW1	-	1
B616	-	SDW1	SDW1	SDW1	SDW1	-	1
B617	-	SDW1	SDW1	SDW1	SDW1	-	1
B619	-	SDW1	SDW1	SDW1	SDW1	-	1
B620A	-	SDW1	SDW1	SDW1	SDW1	-	-
B620B	-	SDW1	SDW1	SDW1	SDW1	-	-
B621	-	SDW1	SDW1	SDW1	SDW1	-	1
B622	-	SDW1	SDW1	SDW1	SDW1	-	-
B624	-	SDW1	SDW1	SDW1	SDW1	-	-
B625	-	SDW1	SDW1	SDW1	SDW1	-	-
B626	-	SDW1	SDW1	SDW1	SDW1	-	-
B627	-	SDW1	SDW1	SDW1	SDW1	-	1
B628	-	SDW1	SDW1	SDW1	SDW1	-	1
B628A	-	SDW1	SDW1	SDW1	SDW1	-	1
B629	-	SDW1	SDW1	SDW1	SDW1	-	1
B630	-	SDW1	SDW1	SDW1	SDW1	-	1
B631	-	SDW1	SDW1	SDW1	SDW1	-	1
B633	-	SDW1	SDW1	SDW1	SDW1	-	1
B635	-	SDW1	SDW1	SDW1	SDW1	-	1
B635A	-	SDW1	SDW1	SDW1	SDW1	-	1
B636	-	SDW1	SDW1	SDW1	SDW1	-	1
B637	-	SDW1	SDW1	SDW1	SDW1	-	1
B640	-	SDW1	SDW1	SDW1	SDW1	-	1
B641	-	SDW1	SDW1	SDW1	SDW1	-	1
B642	-	SDW1	SDW1	SDW1	SDW1	-	1
B643	-	SDW1	SDW1	SDW1	SDW1	-	1
B643A	-	SDW1	SDW1	SDW1	SDW1	-	1
B644	-	SDW1	SDW1	SDW1	SDW1	-	1
B645	-	SDW1	SDW1	SDW1	SDW1	-	1
B646	-	SDW1	SDW1	SDW1	SDW1	-	1

WALL
SDW1- REMOVE VINYL BASE

CEILING
SDC1- REMOVE METAL PAN CEILING TILES
REFER TO DETAIL 3/HA1

REMARKS
1. REMOVE INDICATED WALLS AND ASSOCIATED COMPONENTS IN THEIR ENTIRETY

ASBESTOS ABATEMENT SCHEDULE

ROOM	FLOOR	WALL				CEILING	REMARKS
		N	E	S	W		
WORK AREA 3		NON-FRIABLE MATERIALS					
B606	F1	-	-	-	-	-	1
B608	F1	-	-	-	-	-	1
B610	F3	-	-	-	-	-	1
B612	F1	-	-	-	-	-	1
B616	F1	-	-	-	-	-	1
B617	F1	-	-	-	-	-	1
B619	F1	-	-	-	-	-	1
B620A	F1	-	-	-	-	-	1
B620B	F1	-	-	-	-	-	1
B621	F1	-	-	-	-	-	1
B622	F1	-	-	-	-	-	1
B624	F1	-	-	-	-	-	1
B625	F1	-	-	-	-	-	1
B626	F1	-	-	-	-	-	1
B627	F1	-	-	-	-	-	1
B628	F1	-	-	-	-	-	1
B628A	F1	-	-	-	-	-	1
B629	F1	-	-	-	-	-	1
B630	F1	-	-	-	-	-	1
B631	F1	-	-	-	-	-	1
B633	F1	-	-	-	-	-	1
B635	F1	-	-	-	-	-	1
B635A	F1	-	-	-	-	-	1
B636	F1	-	-	-	-	-	1
B637	F1	-	-	-	-	-	1
B640	F1	-	-	-	-	-	1
B641	F1	-	-	-	-	-	1
B642	F1	-	-	-	-	-	1
B643	F1	-	-	-	-	-	1
B643A	F1	-	-	-	-	-	1
B644	F1	-	-	-	-	-	1
B645	F1	-	-	-	-	-	1
B646	F1	-	-	-	-	-	1

FLOOR
F1- REMOVE FLOOR TILE, ADHESIVE AND FLOOR LEVELING COMPOUND (IF ANY)
F3- REMOVE CARPET TILE AND ADHESIVES

REMARKS
1- REFER TO PRE-ABATEMENT SELECTIVE DEMOLITION SCHEDULE

Revisions	Date



SMSA Architectural Services

9489 CROOKED HILL ROAD
CARSVILLE, NEW YORK 13318-0026
TEL: 516.726.6499
FAX: 315.839.5280
E-MAIL: smasrch@mac.com



Reviewed: Facility Manager
Reviewed: Facility Director
Reviewed:
Reviewed:

Drawing Title
ASBESTOS ABATEMENT
Approved: Project Director

Project Title
RENOVATION FOR 6B WARD
Building Number
Location
Checked
SMS
Drawn
DJH

Date
10-15-2014
Project No.
528A7-13-745
Drawing No.
HA3
Dwg. 7 of 81

