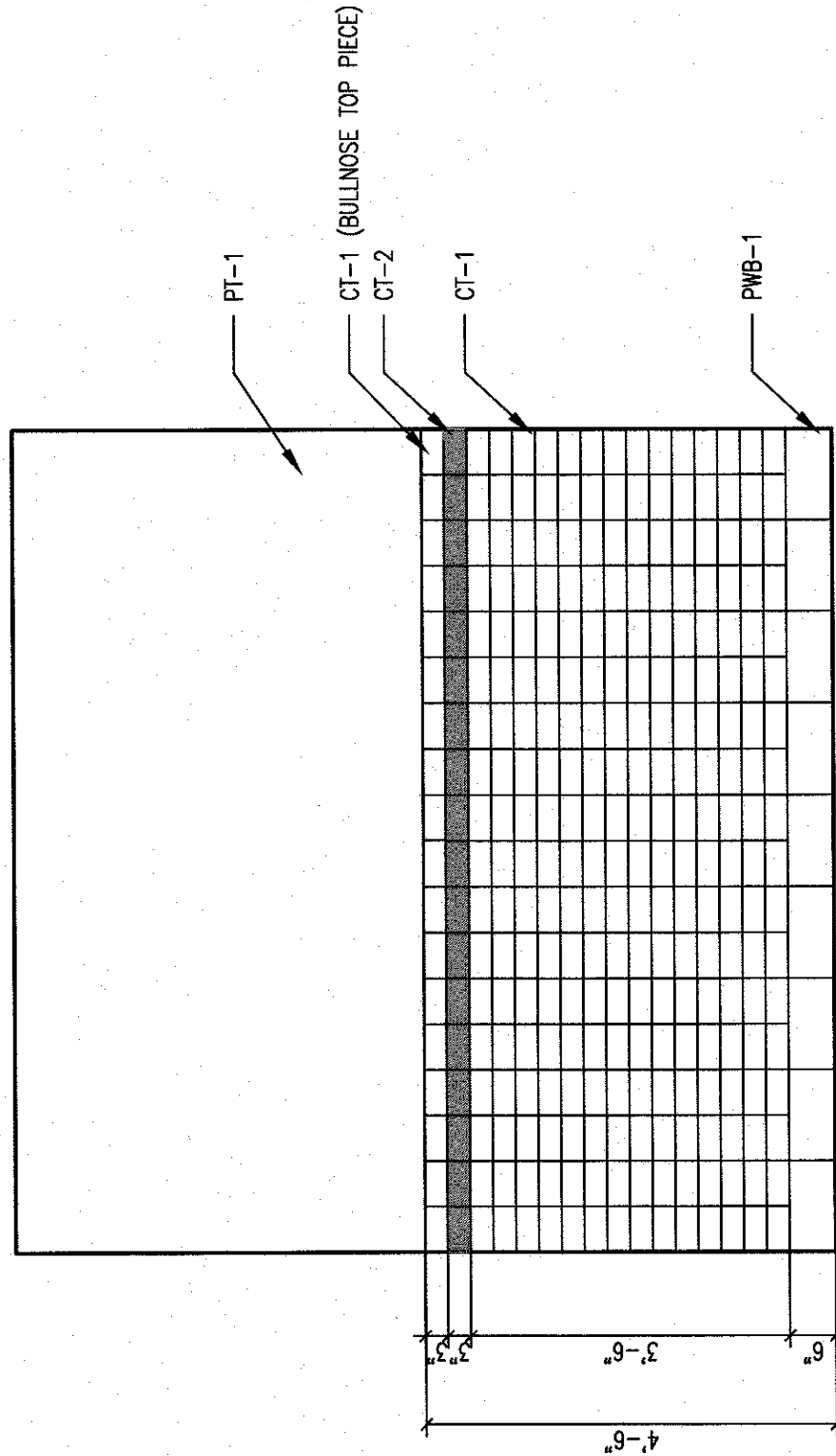


ROOM FINISH SCHEDULE										
ROOM #	ROOM	FLOOR	BASE	NORTH WALL	EAST WALL	SOUTH WALL	WEST WALL	CEILING	CEILING HEIGHT	COMMENTS
B211	WAITING	OPT-1	VB-1	PT/CR-1	PT/CR-1	PT/CR-1	PT/CR-1	ACT-1	8'-0"/9'-0"	COORDINATE INSTALLATION OF CR-1 WITH BACK OF WAITING CHAIR HEIGHT
B211A	H/C TOILET	PT-1	PWB-1	CT/PT	CT/PT	CT/PT	CT/PT	ACT-1	9'-0"	REFER TO E1 THIS SHEET FOR TILE ELEVATION
B211B	RECEPT.	OPT-1	VB-2	PT-1	PT-1	PT-2	PT-1	ACT-1	9'-0"	
B212	CORRIDOR	VCT-2	VB-1	WP-1/PT-1	WP-1/PT-1	WP-1/PT-1	WP-1/PT-1	ACT-1	8'-0"	WP-1 WAINSCOT TO 4'-6" A.F.F. REFER TO E1 THIS SHEET
B212A	COPY	VCT-2	VB-1	WP-1/PT-1	WP-1/PT-1	WP-1/PT-1	WP-1/PT-1	ACT-1	9'-0"	WP-1 WAINSCOT TO 4'-6" A.F.F. REFER TO E1 THIS SHEET
B212B	EQUIP. STORAGE	VCT-1	VB-2	PT-1	PT-1	PT-1	PT-1	ACT-1	9'-0"	
B212C	OFFICE 3	PT-1	VB-2	PT-1	PT-1	PT-1	PT-2	ACT-1	9'-0"	
B212D	OFFICE 4	OPT-1	VB-2	PT-1	PT-1	PT-1	PT-2	ACT-1	9'-0"	
B212E	H/C TOILET	PT-1	PWB-1	CT/PT	CT/PT	CT/PT	CT/PT	ACT-1	9'-0"	REFER TO E1 THIS SHEET FOR TILE ELEVATION
B213	OFFICE 1	OPT-1	VB-2	PT-1	PT-2	PT-1	PT-1	ACT-1	9'-0"	
B213A	LINEN STORAGE	VCT-1	VB-1	PT-1	PT-1	PT-1	PT-1	ACT-1	9'-0"	
B214	OFFICE 2	OPT-1	VB-2	PT-1	PT-2	PT-1	PT-1	ACT-1	9'-0"	
B215	TREATMENT/EMG	VCT-1	VB-2	PT-1	PT-1	PT-1	PT-1	ACT-1	9'-0"	
B215A	TREATMENT	VCT-1	VB-2	PT-1	PT-1	PT-1	PT-1	ACT-1	9'-0"	
B216	TREATMENT	VCT-1	VB-2	PT-1	PT-1	PT-1	PT-1	ACT-1	9'-0"	
B216A	TREATMENT	VCT-1	VB-2	PT-1	PT-1	PT-1	PT-1	ACT-1	9'-0"	
B217	EXERCISE AREA	RT-1/RT-2	VB-1	PT-1	PT-1	PT-1	PT-2	ACT-1	8'-0"/9'-0"	REFER TO A101 FOR FLOOR PATTERN INFORMATION
B217C	STAFF BREAK/WORK	OPT-1/VCT-1	VB-2	PT	PT	PT	PT	ACT-1	9'-0"	
B217D	HAND THERAPY	VCT-1	VB-1	PT-2	PT-2	PT-1	PT-1	ACT-1	9'-0"	



E1 1/2" = 1'-0"

FINISH LEGEND

FINISH	FLOORS	
CPT-1	CARPET TILE (OFFICES)	MANNINGTON- GINSENG (1221)-24" x 24" MONTAGE
VCT-1	VINYL TILE (CORRIDOR)	MANNINGTON (12x12) EXCELON
VCT-2	VINYL TILE	MANNINGTON (18x18) EXCELON
VB-1	VINYL BASE, 6"	JOHNSONITE
VB-2	VINYL BASE, 4"	JOHNSONITE
PFT-1	PORCELAIN FLOOR TILE, BATHROOM	STONEPEAK- QUARTZITE LINE (12" x 12") USG1212098
RT-1	RUBBER TILE	MANNINGTON - 18" x 18" COLOR SPEC , HATCH (861)
RT-2	RUBBER TILE (ACCENT)	MANNINGTON - 18" X 18" COLOR SPEC, WATERFALL (877)
FINISH	WALLS	
PT-1	PAINT, FIELD	COLOR TBD, SHERWIN WILLIAMS PROMAR 200, SEMI-GLOSS
PT-2	PAINT, ACCENT	COLOR TBD, SHERWIN WILLIAMS PROMAR 200, SEMI-GLOSS
PT-3	PAINT, TRIM	COLOR TBD, SHERWIN WILLIAMS PROMAR 200, SEMI-GLOSS
PT-4	DOOR STAIN/PAINT	TBD, COORDINATE WITH LAKE CITY VA INTERIOR DESIGNER FOR CAMPUS STANDARD
PT-5	PAINT, CEILING	FLAT CEILING WHITE
WP-1	WALL PROTECTION	INPRO- RIGID SHEET WALL PROTECTION W/ TOP CAP
CG-1	CORNER GUARD	INPRO- 150 SURFACE MOUNT CORNER GUARD
CR-1	CHAR RAIL, WAITING	JOHNSONITE-CHR-XX 3"
CT-1	CERAMIC WALL TILE, WAINSCOT TOILET ROOMS	FLORIDA TILE - STREAMLINE 9- DORIC 311- (3" x 6")
CT-2	CERAMIC TILE WALL ACCENT	FLORIDA TILE - STREAMLINE 9- IVY SHADOW LISTELLO 518 GREY (3" x6")
PWB-1	PORCELAIN TILE WALL BASE	STONEPEAK- QUARTZITE LINE COVE BASE (6" x 12") US6612C098
MT-1	MOSAIC TILE ACCENT	CROSSVILLE-EBBAFLOW-LINEAR MIXED MOSAIC-MOON AND STARS EF02/1MIKMO5-TO BE INSTALLED VERTICALLY, PWB-1 SHALL BE COVE BASE PIECE
FINISH	OTHER	
SS-1	SOLID SURFACE (RECEPTION)	CORIAN, SANDALWOOD
PL-1	PLASTIC LAMINATE (CASEWORK)	WILSONART AMBER CHERRY 7919K-78
FINISH	CEILING	
ACT-1	ACOUSTICAL CEILING TILE	ARMSTRONG- FISSED SQUARE LAY-IN, 756A
CCT-1	CUBICLE CURTAIN TRACK	INPRO CLICKEZE

CONSULTANTS:

Revision

Date

ARCHITECT/ENGINEERS:

PARADIGM

ENGINEERS AND CONSTRUCTORS

9 Oak Drive - Ocala, FL 34472 - PH: 352.339.8511 - www.paradigmusa.com

5 Feb 2014

STATE OF FLORIDA

PROFESSIONAL ENGINEER

167369

W. G. J. Jr.

APPROVED PROJECT DIRECTOR

DATE: 02-06-14

CHECKED: JCP

DRAWN: DML

LOCATION: LAKE CITY VA MEDICAL CENTER
89 S. WILSON AVE. LAKE CITY, FL 32025

FINISH SCHEDULE AND LEGEND

DRAWING TITLE

PROJECT NUMBER: 579A4-12-101

BUILDING NUMBER: 64

DRAWING NUMBER: ID601

OFFICE OF CONSTRUCTION AND FACILITIES MANAGEMENT

DEPARTMENT OF VETERANS AFFAIRS

FULLY SPRINKLERED
BID DOCUMENTS