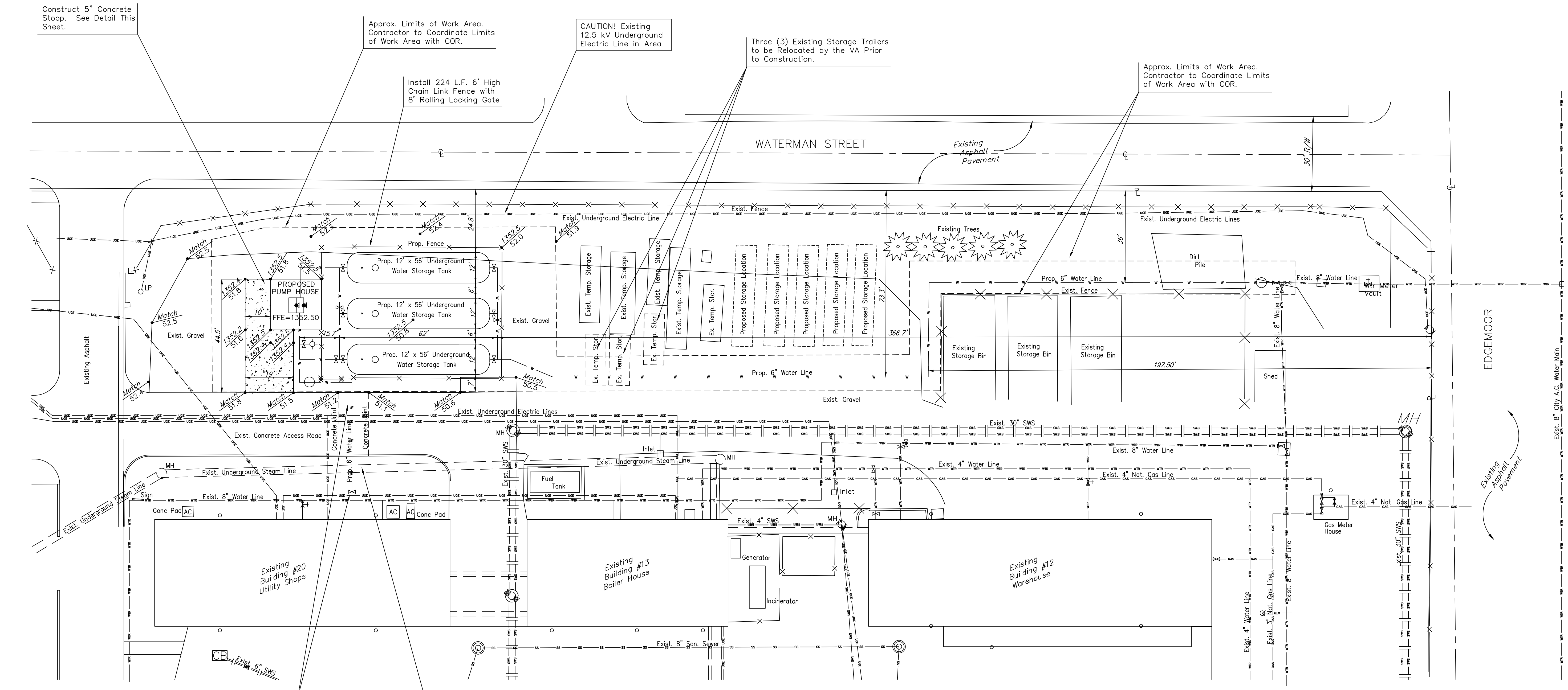
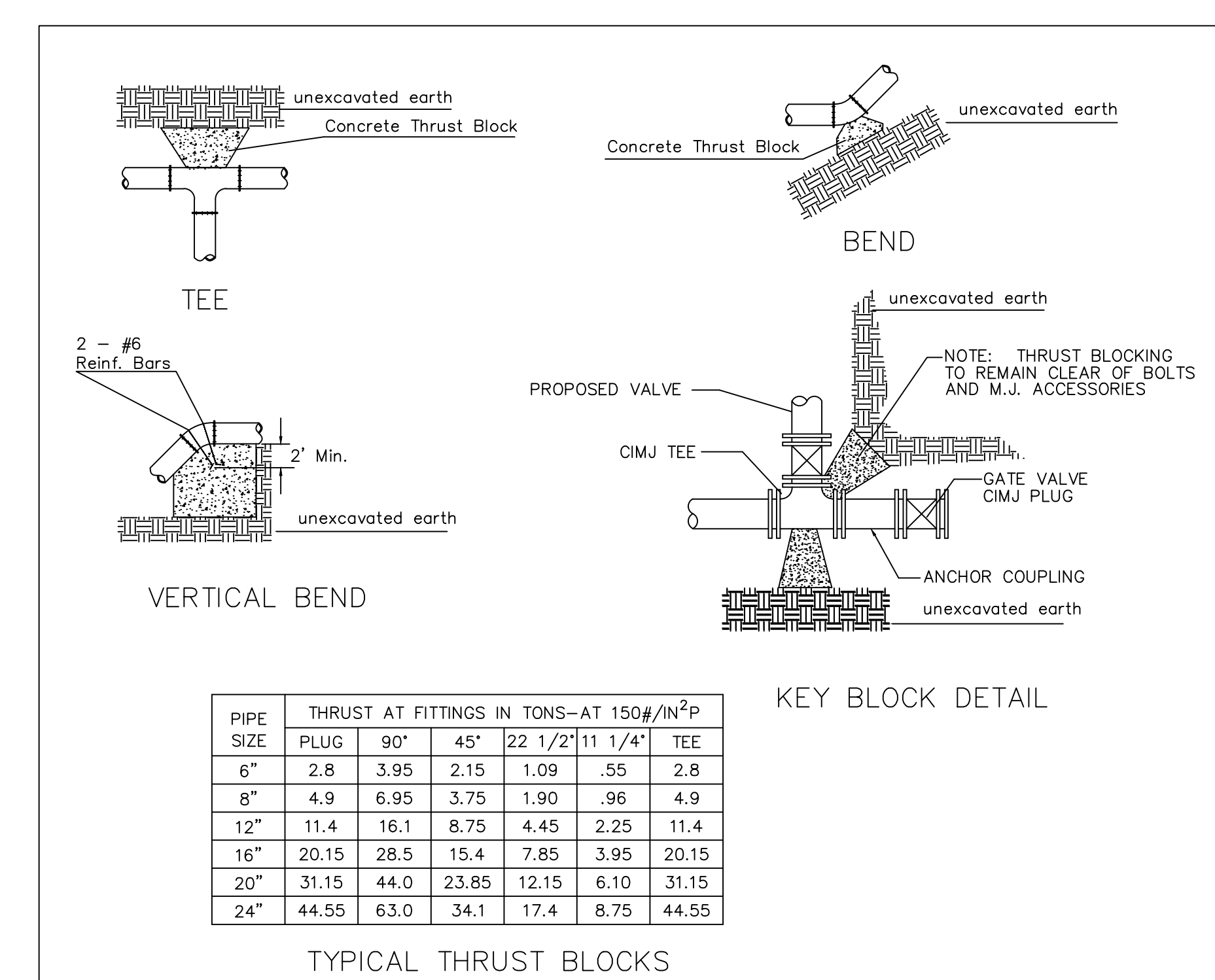
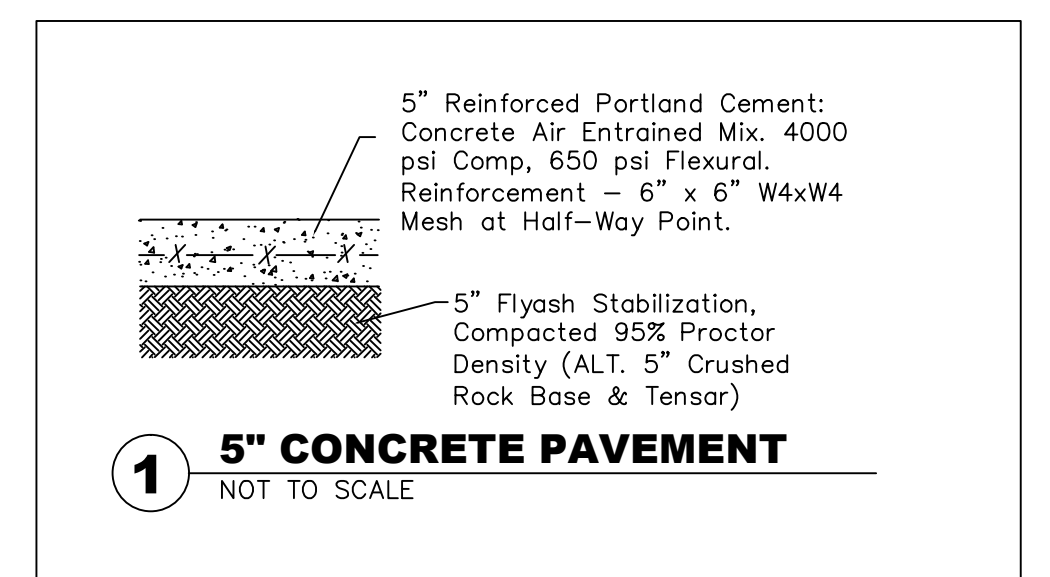


three inches = one foot
one and one-half inch = one foot
one inch = one foot
three-quarters inch = one foot
one-half inch = one foot
three-eighths inch = one foot
one-quarter inch = one foot
one-eighth inch = one foot

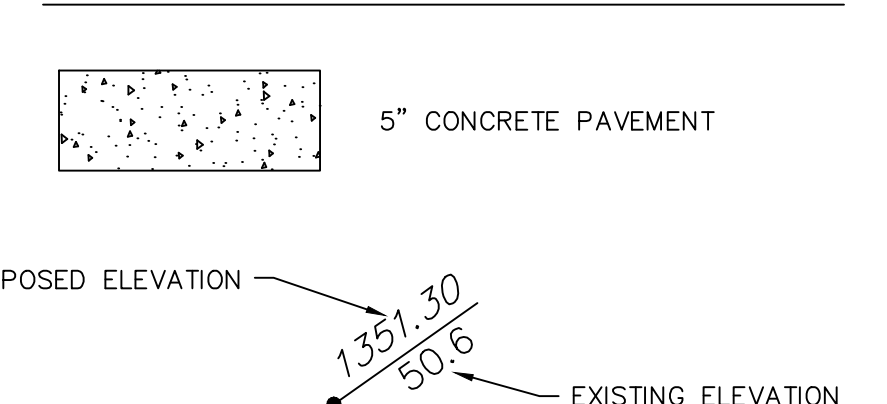


GRADING NOTES

- Contractor shall be required to provide notice to Kansas One Call at 687-2470 a minimum of two (2) working days prior to any excavation or work adjacent to utilities.
- The Contractor must notify the following in case of an emergency:
Kansas Gas Service (Gas).....1-888-482-4850
Aquila Energy (Gas).....1-800-303-0357
Westar Energy (Electric).....383-8650
Cox Communications (Cablevision).....262-4270
AT&T (Phone).....268-2759
City of Wichita Water Dept. (Water).....268-4563
or 268-4908
City of Wichita Sewer Maint. (San. Sewer).....268-4024
or 262-6000
City of Wichita Storm Sewer Maint. (Storm Sewer).....268-4090
City of Wichita Traffic Maint. (Traf. Control).....268-4034
- Existing utilities and their locations, as shown on the plans, represent the best information obtainable for design. Location information has been obtained from the various utility companies and is either from company record drawings or company provided field locations. The Contractor will be required to work around existing utilities which do not conflict with proposed construction.
- The Contractor shall verify all utility locations prior to construction of this project.
- Cross-Slopes on sidewalks around building shall not exceed 1/4" per foot (or 2%). Notify Engineer of any discrepancies prior to forming of walks.
- Contractor shall coordinate limits of work area with COR.
- Contractor shall provide temporary construction fencing as directed by COR.
- Contractor shall install 4" thickness of KDOT SB-1 crushed rock in all areas where existing gravel has been disturbed by construction. This shall include but not be limited to area within proposed chain link fence over water storage tanks and extend east past proposed pump house to match into existing undisturbed gravel.

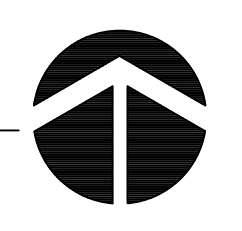


LEGEND:



SITE GRADING PLAN

Scale 1"= 20'-0"



Baughman Company, P.A.
315 Ellis - Wichita, KS 67211
F316-262-7271 F316-262-0149

BLDG. LOCATION & ORIENTATION CHANGES	4-1-13
REVISIONS	DATE



PROJECT TITLE CONSTRUCT BACKUP WATER SYSTEM	
LOCATION WICHITA VAM&ROC 5500 E KELLOGG	
ISSUE DATE 6-20-2014	CHECKED R.B.K.
	DRAWN R.M.C.

PROJECT NUMBER 589A7-12-127
BUILDING NUMBERS
DRAWING NUMBER C100
DWG 2 OF 8

Office of Facilities Management

Department of Veterans Affairs