

GENERAL NOTES

COR = CONTRACTING OFFICER'S REPRESENTATIVE

VENTILATION SYSTEM MATERIALS LIST

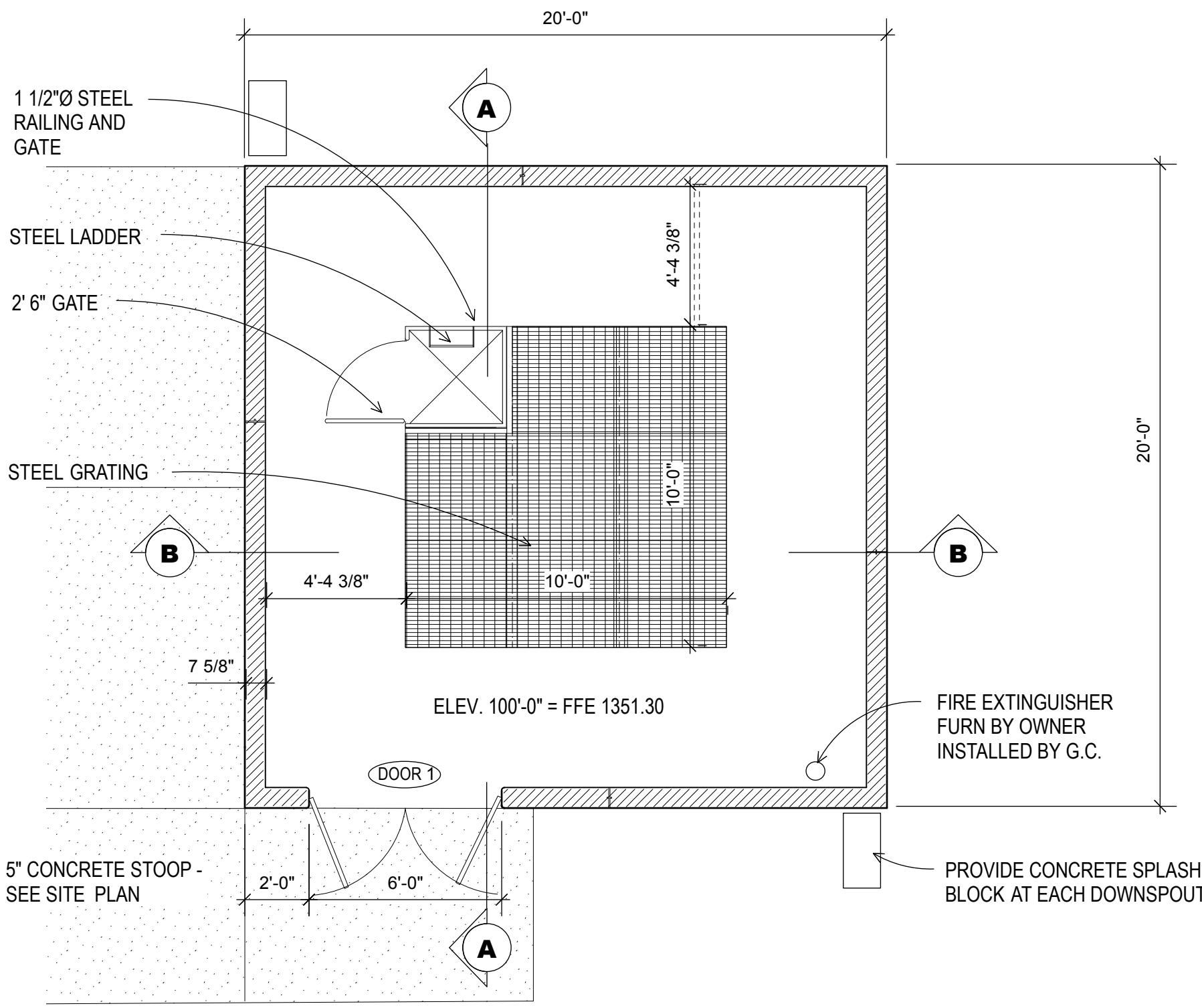
EXHAUST FAN:
EXHAUST FAN SHALL BE GREENHECK MODEL S1-16-428-B6, (OR EQUAL BY COOK, PENN OR OTHER), WALL- MOUNTED DIRECT DRIVEN PROPELLER FAN WITH 16" DIA. ALUMINUM PROPELLER, SQUARE STEEL VENTURI, 1/3 H.P., 115/60/1, 1160 RPM MOTOR, GRAVITY TYPE DISCHARGE DAMPER, AND FACTORY WALL MOUNTING SLEEVE, WITH REAR WIRE GUARD. FAN SHALL BE AMCA AIR AND SOUND CERTIFIED, AND HAVE A MINIMUM CAPACITY OF 1500 CFM AT 0.25" WG ESP.

THERMOSTAT:
FURNISH A LINE VOLTAGE WALL MOUNTED THERMOSTAT WITH POSITIVE OFF POSITION, FOR INSTALLATION BY THE ELECTRICAL CONTRACTOR AND WIRE AS SHOWN ON THE PLANS SO THE EXHAUST FAN OPERATES AND INTAKE DAMPER OPENS ANYTIME THE SPACE TEMPERATURE IS ABOVE SET POINT.

WEATHER PROOF LOUVER:
STATIONARY WEATHERPROOF LOUVERS SHALL BE GREENHECK MODEL EDK-402 (OR EQUAL BY RUSKIN, AMERICAN WARMING & VENTILATING, PENN OR OTHER), WITH CONCEALED BLADE BRACES, BLADES SET AT 37 DEG. AND MINIMUM 12 GAUGE HEAVY DUTY ALUMINUM CONSTRUCTION **WITH ALL JOINTS AND SEAMS WELDED. FURNISH THE LOUVERS WITH A KYMAR OR EQUIVALENT, DARK BRONZE FINISH.** FURNISH WITH 1/2" SQUARE ALUMINUM BIRDSCREEN AND FLANGED TYPE FRAME FOR MOUNTING IN THE MASONRY WALLS. LOUVERS SHALL BE AMCA AIR AND WATER CERTIFIED FOR NO WATER CARRYOVER AND A MAXIMUM OF 0.04" S.P. DROP AT 650 FPM FREE AREA VELOCITY.

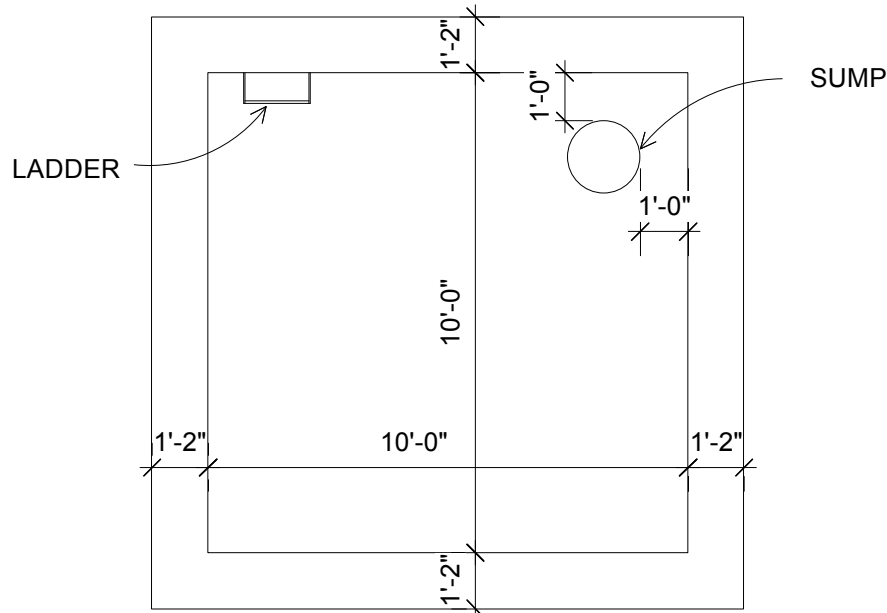
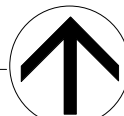
INTAKE DAMPER:
THE AIR INTAKE DAMPER SHALL BE LOW LEAK TYPE EQUAL TO GREENHECK "VCD-43" SERIES, (OR EQUAL BY PENN, RUSKIN OR OTHER), LOW LEAK OPPOSED BLADE DAMPER WITH EXTRUDED ALUMINUM FRAME, ALUMINUM AIRFOIL BLADES, CONCEALED LINKAGE, 1/2" CADMIUM PLATED EXTENDED STEEL OPERATOR SHAFTS, NEOPRENE RUBBER BLADE GASKETS, EXTRUDED ALUMINUM MOLDED NYLON SLEEVE TYPE BEARINGS AND STAINLESS SPRING STEEL SIDE SEALS. DAMPER SHALL LEAK NO MORE THAN 5.0 CFM PER SQUARE FOOT OF DAMPER AREA WITH 3" OF DIFFERENTIAL PRESSURE ACROSS THE DAMPER. FURNISH THE DAMPER WITH A BELIMO NF-120S SERIES, (2) POSITION SPRING RETURN DAMPER ACTUATOR, 115/60/1, RATED FOR 60 IN-LBS OF TORQUE.

ELECTRICAL CONTRACTOR SHALL WIRE THE DAMPER ACTUATOR IN PARALLEL WITH THE EXHAUST FAN SO THAT THE DAMPER IS OPEN ANY TIME THE FAN IS ON.



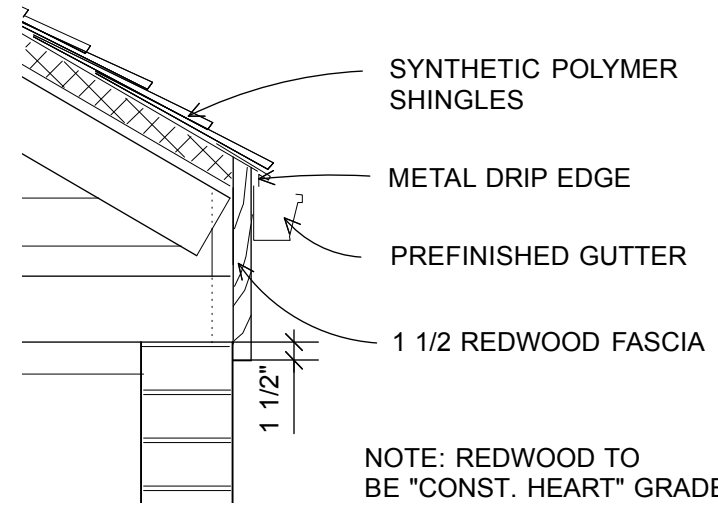
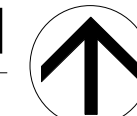
FLOOR PLAN

1/4" = 1'-0"



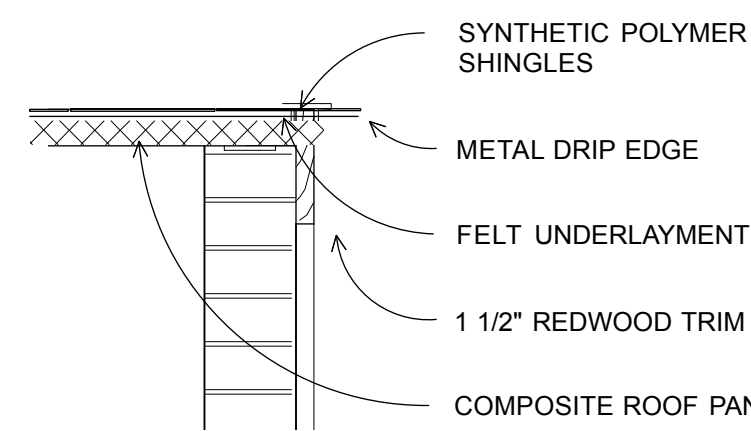
PUMP PIT PLAN

1/4" = 1'-0"



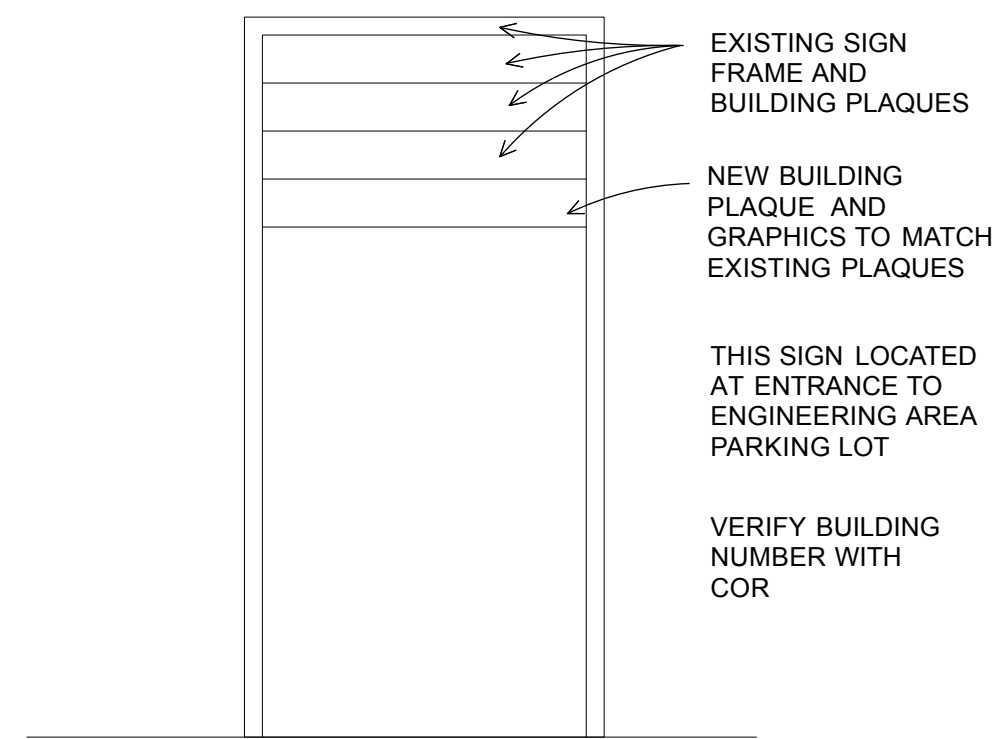
EAVE DETAIL

3/4" = 1'-0"



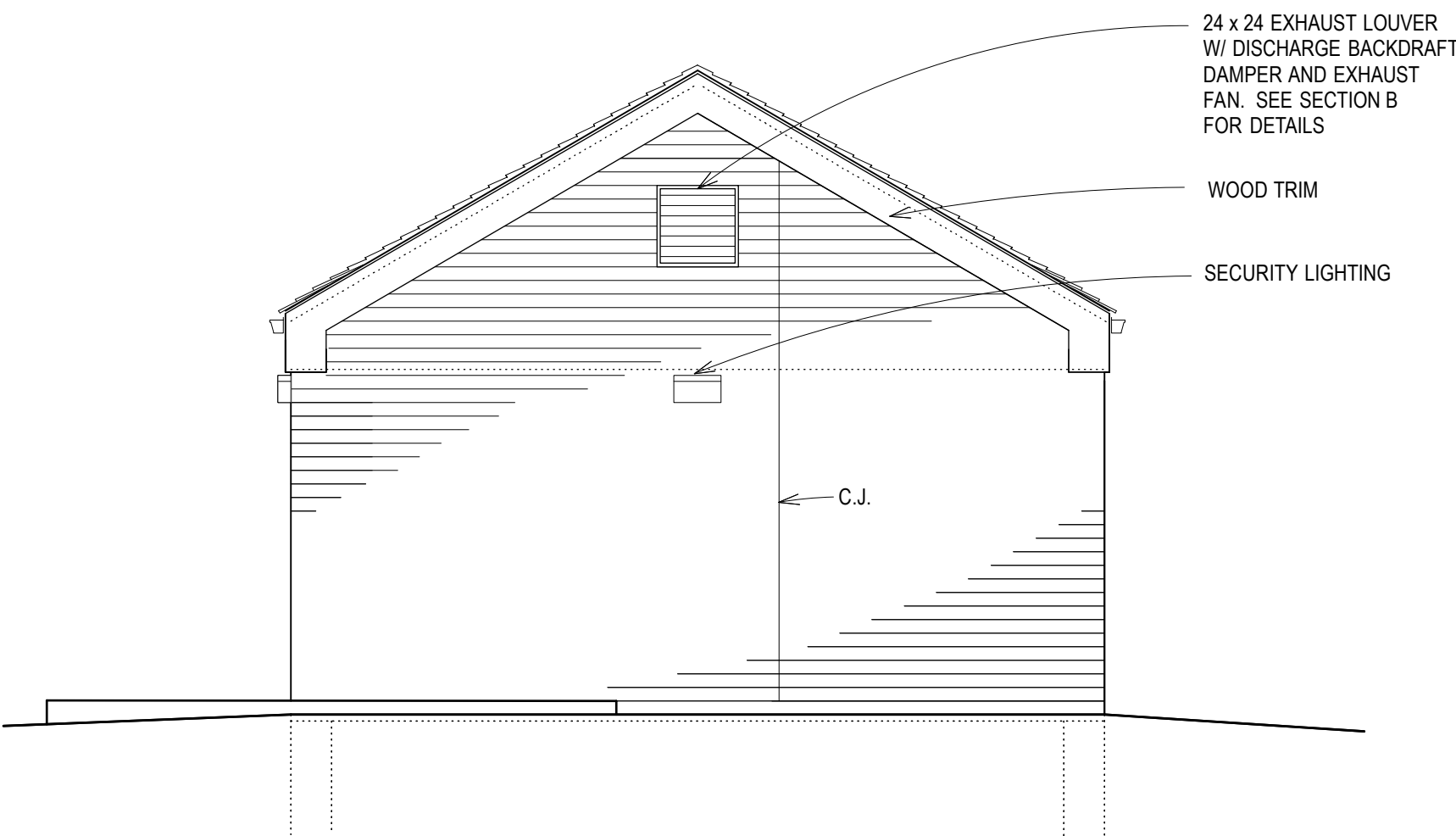
GABLE DETAIL

3/4" = 1'-0"



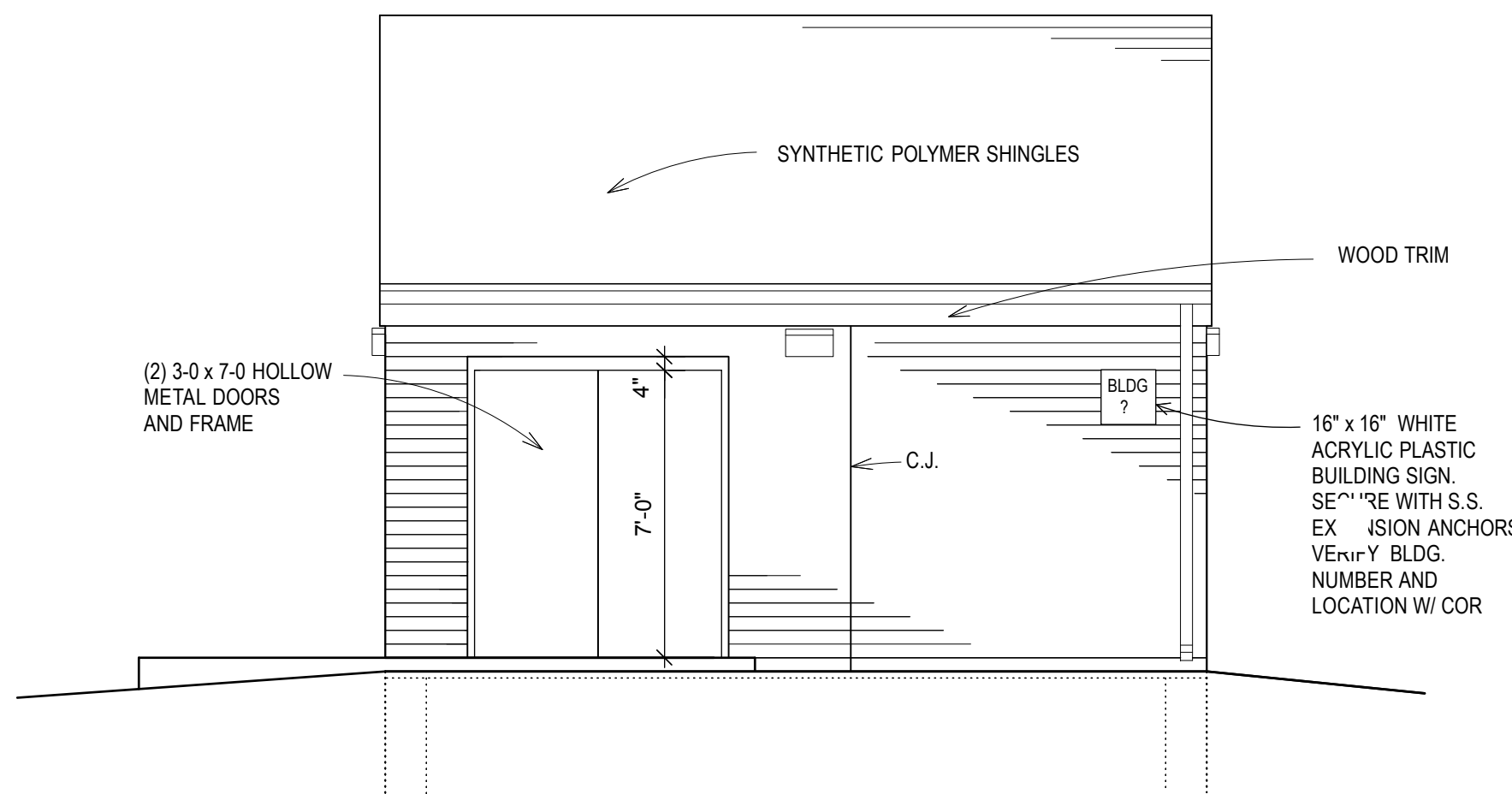
SITE DIRECTORY SIGN

NO SCALE



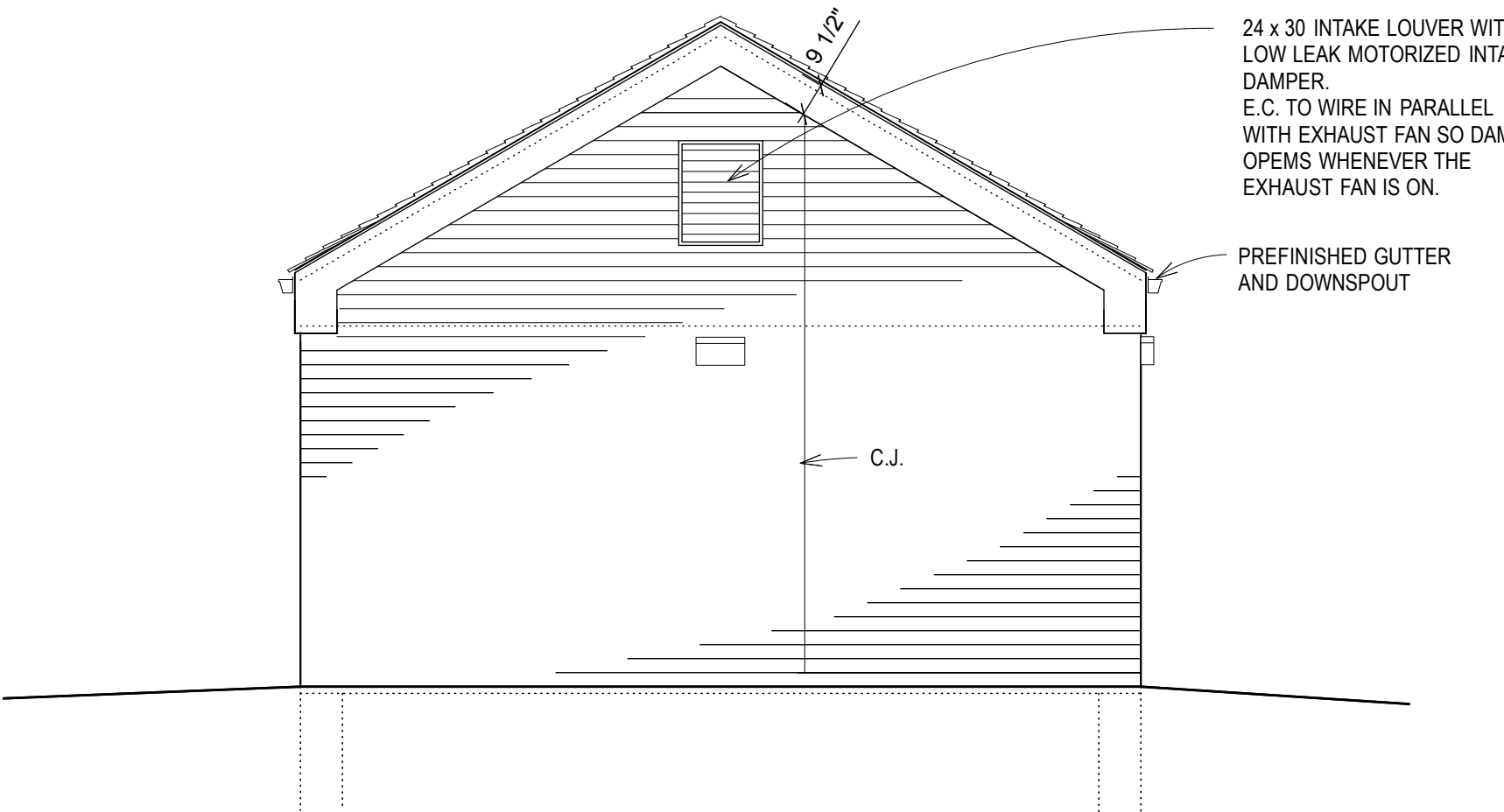
EAST ELEVATION

1/4" = 1'-0"



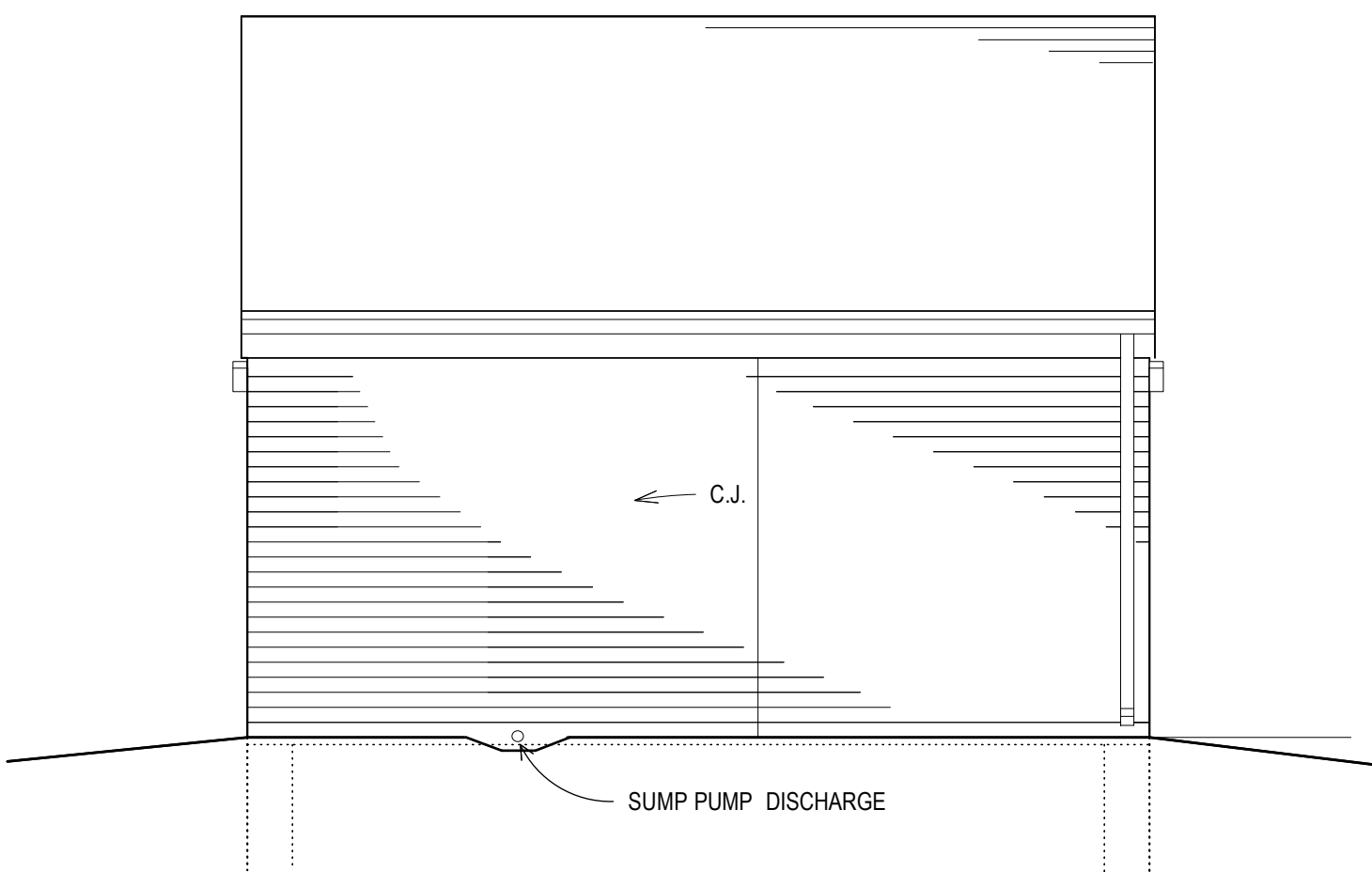
SOUTH ELEVATION

1/4" = 1'-0"



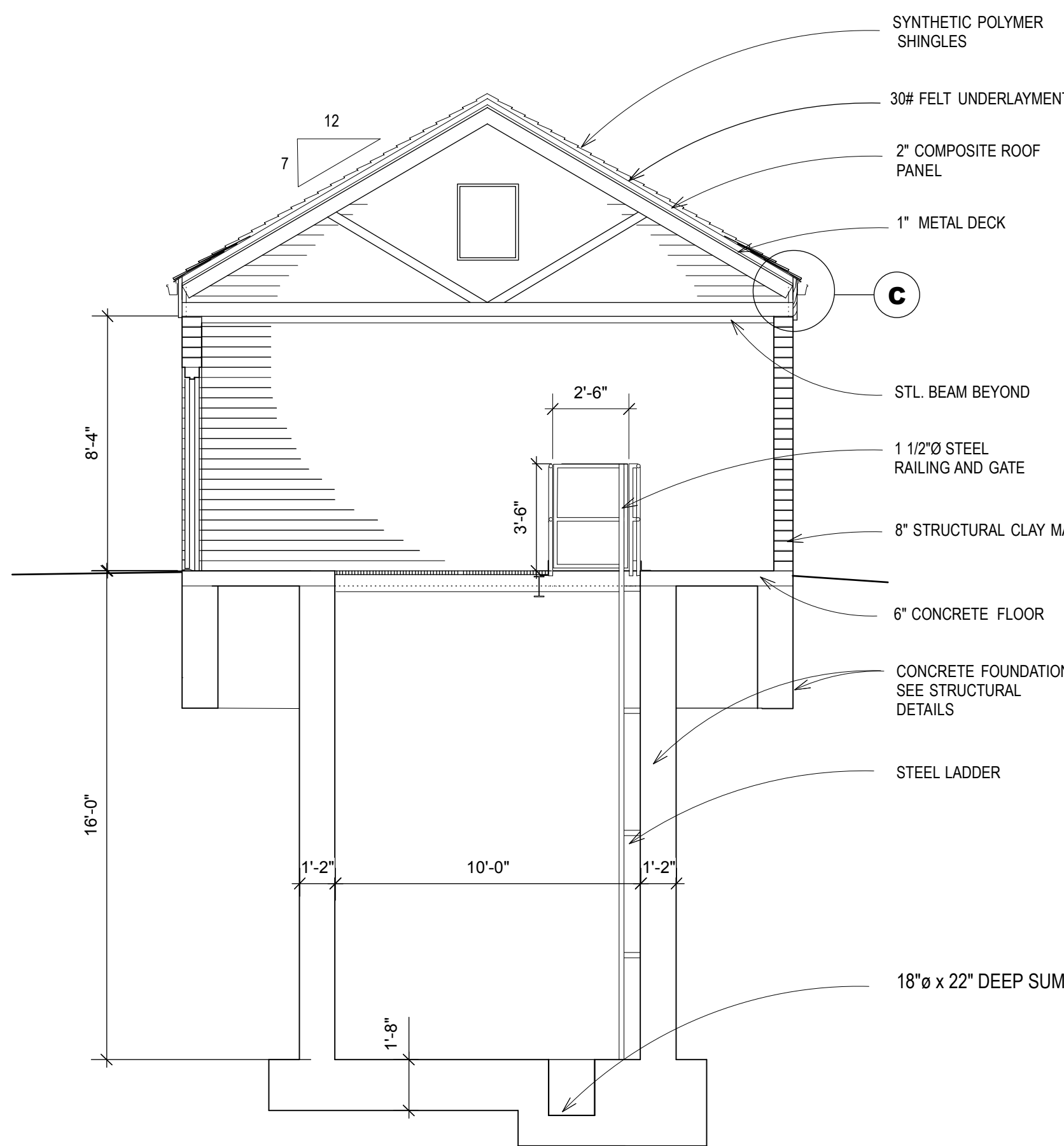
WEST ELEVATION

1/4" = 1'-0"



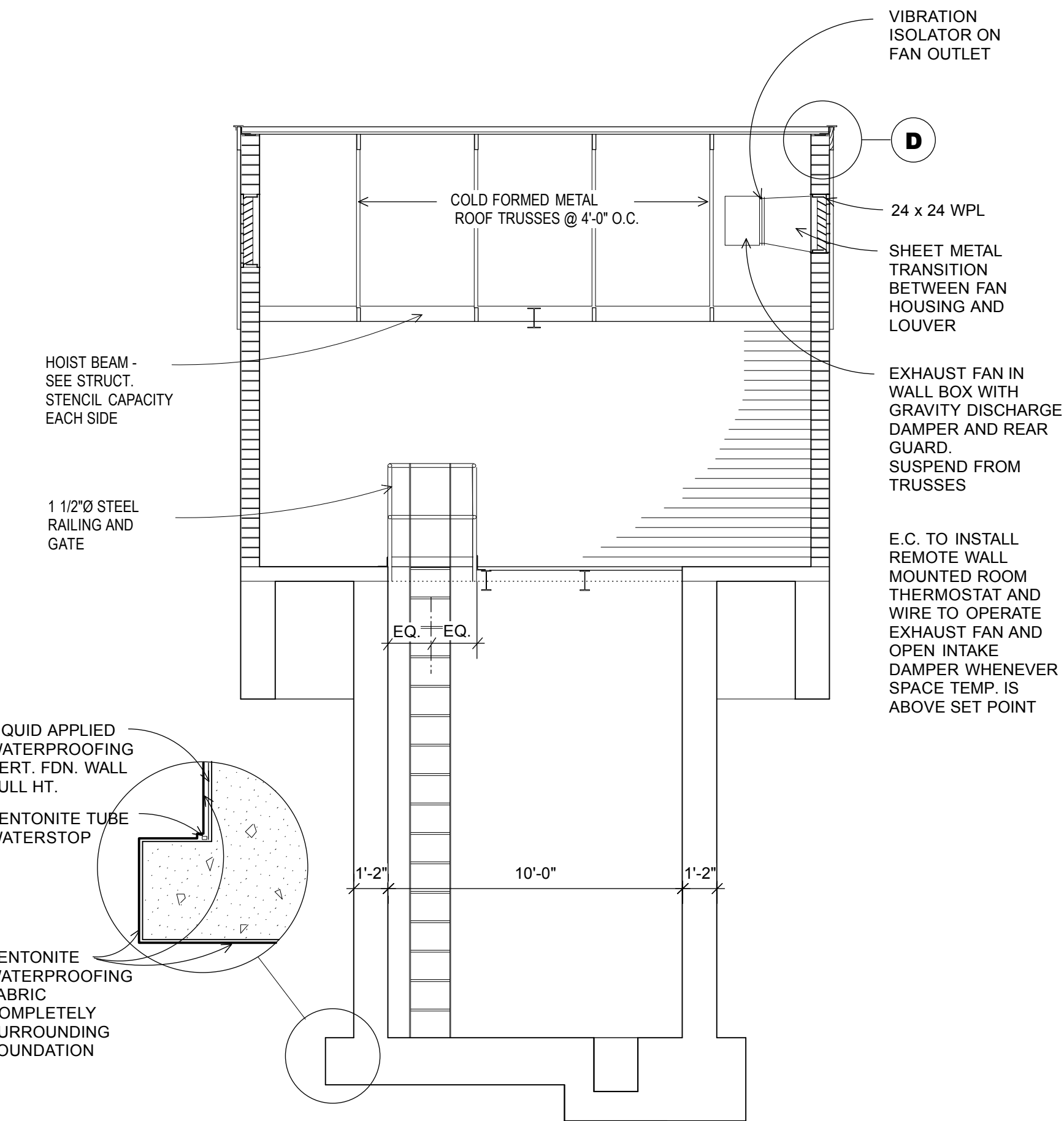
NORTH ELEVATION

1/4" = 1'-0"



SECTION LOOKING WEST

1/4" = 1'-0"



SECTION LOOKING NORTH

1/4" = 1'-0"

BLDG. LOCATION & ORIENTATION CHANGES	4-1-13
REVISIONS	DATE



PROJECT TITLE
CONSTRUCT BACKUP WATER SYSTEM

PROJECT NUMBER
589A7-12-127

BUILDING NUMBERS

LOCATION
WICHITA VAM&ROC
5500 E. KELLOGG

ISSUE DATE
6-20-2014

CHECKED
R.B.K.

DRAWN
R.M.C.

DRAWING NUMBER
A100

DWG 6 OF 8

Office of
Facilities
Management



Department of
Veterans Affairs