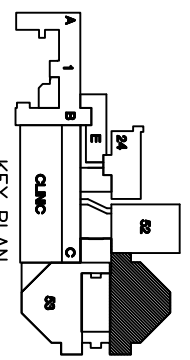
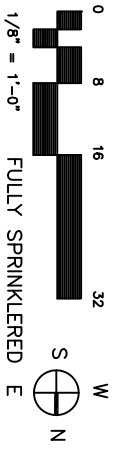


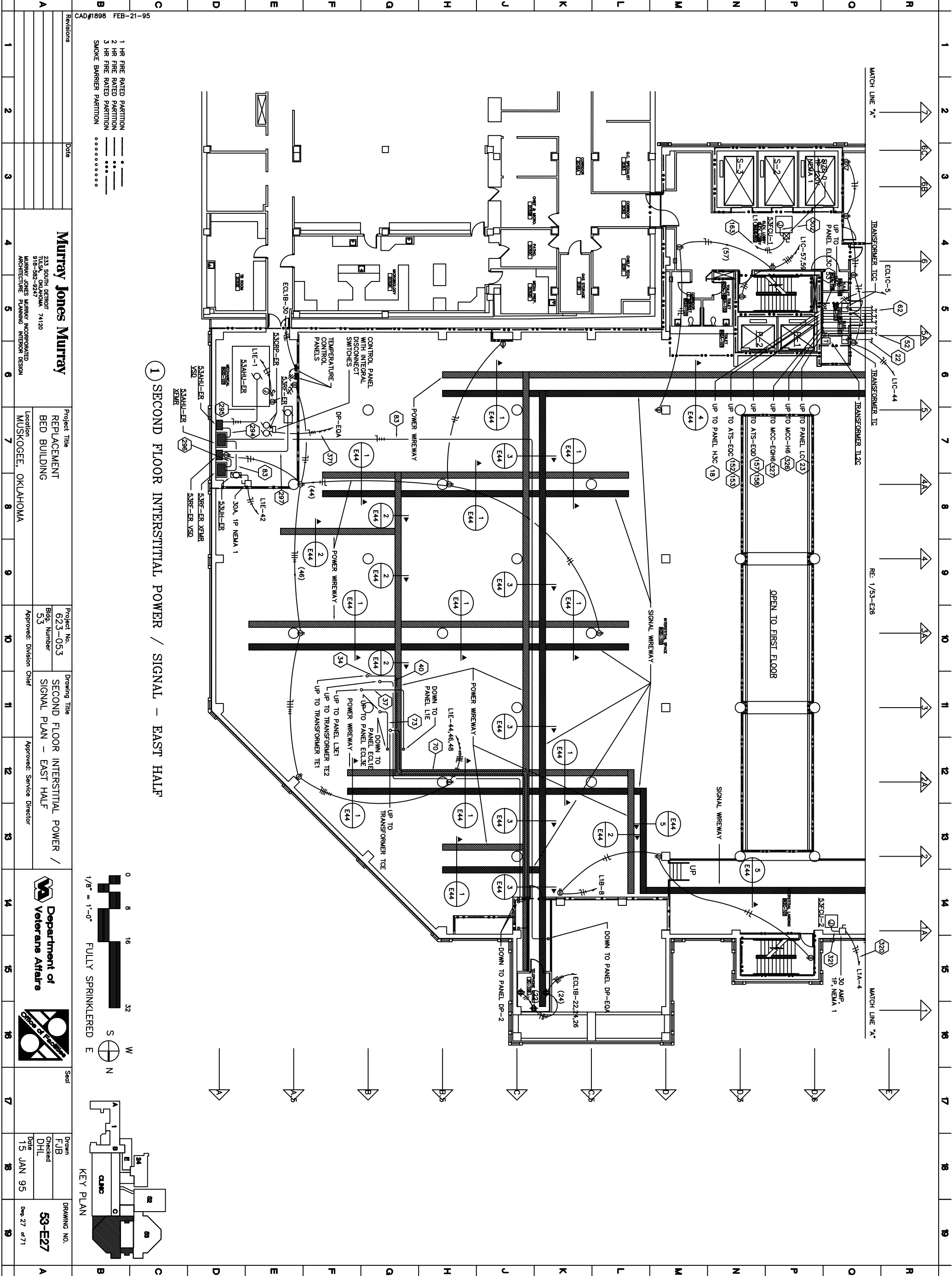
1 SECOND FLOOR INTERSTITIAL POWER / SIGNAL PLAN - WEST HALF

CAD#1899 JAN-17-95

Revisions	Date
1 HR FIRE RATED PARTITION	----
2 HR FIRE RATED PARTITION	----
3 HR FIRE RATED PARTITION	----
SMOKE BARRIER PARTITION



<p>Murray Jones Murray 233 SOUTH DETROIT TULSA, OKLAHOMA 74120 918-582-9247 MURRAY JONES MURRAY INCORPORATED ARCHITECTURE PLANNING INTERIOR DESIGN</p>				<p>Project Title REPLACEMENT BED BUILDING</p>		<p>Project No. 623-053</p>		<p>Drawing Title SECOND FLOOR INTERSTITIAL POWER / SIGNAL PLAN - WEST HALF</p>		<p>Location MUSKOGEE, OKLAHOMA</p>		<p>Bldg. Number 53</p>		<p>Approved: Division Chief</p>		<p>Approved: Service Director</p>		<p>Seal</p>		<p>Drawn FJB</p>		<p>DRAWING NO. 53-E26</p>	
1	2	3	4	5	6	7	8	9	10	11	12	13	14	15	16	17	18	19	20	21	22		



1 SECOND FLOOR INTERSTITIAL POWER / SIGNAL - EAST HALF

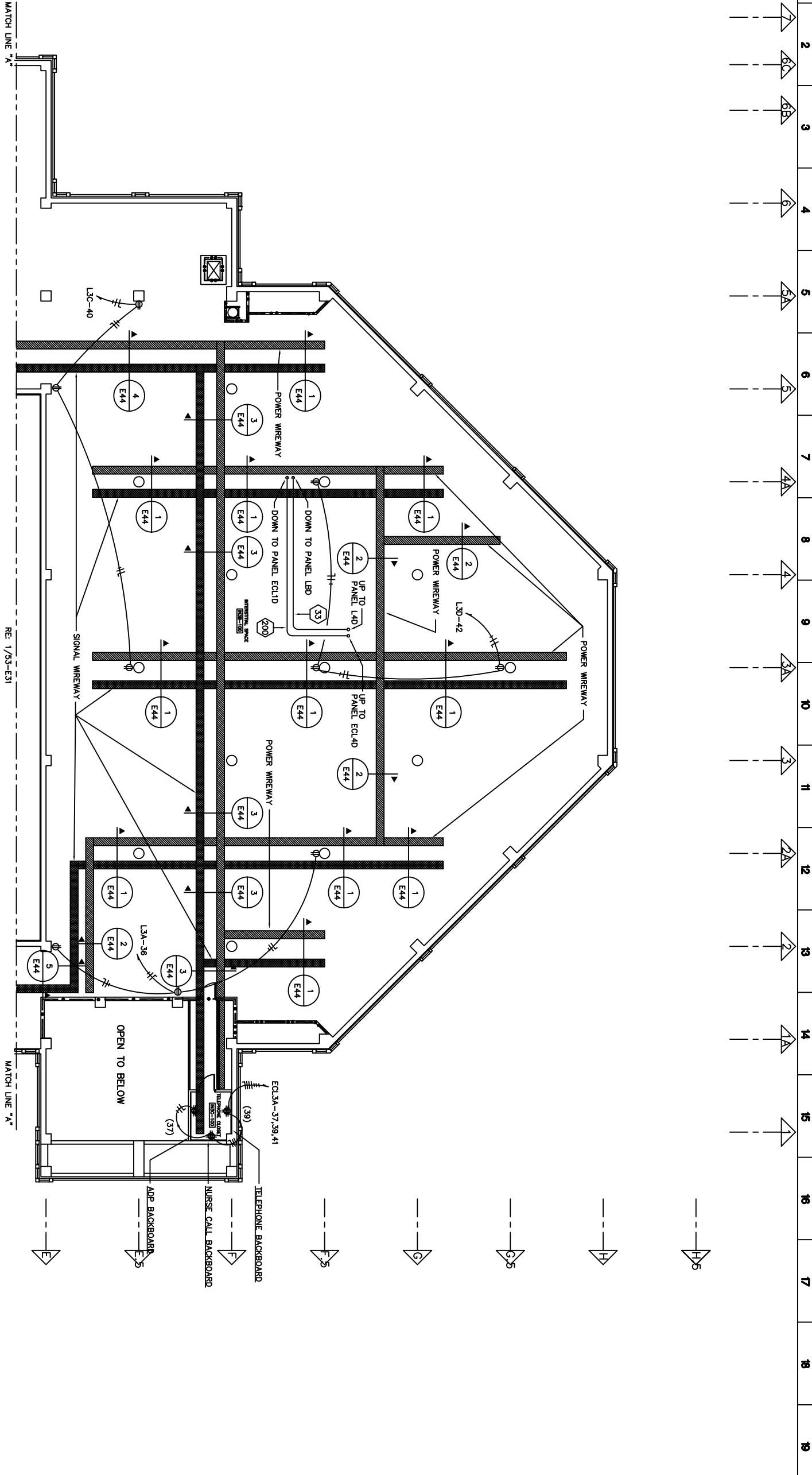
- CAD#1898 FEB-21-95
- 1 HR FIRE RATED PARTITION
 - 2 HR FIRE RATED PARTITION
 - 3 HR FIRE RATED PARTITION
 - SMOKE BARRIER PARTITION

Revisions	Date

<p>Murray Jones Murray</p> <p>233 SOUTH DETROIT TULSA, OKLAHOMA 74120</p> <p>918-582-9247 MURRAY JONES MURRAY INCORPORATED ARCHITECTURE PLANNING INTERIOR DESIGN</p>	<p>Project Title REPLACEMENT BED BUILDING</p> <p>Location MUSKOGEE, OKLAHOMA</p>	<p>Project No. 623-053</p> <p>Bldg. Number 53</p>	<p>Drawing Title SECOND FLOOR INTERSTITIAL POWER / SIGNAL PLAN - EAST HALF</p> <p>Approved: Division Chief</p> <p>Approved: Service Director</p>
---	--	---	--

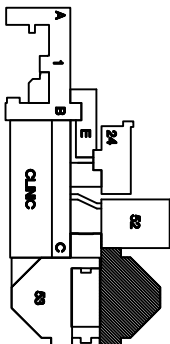
<p>0 8 16 32</p> <p>1/8" = 1'-0"</p> <p>FULLY SPRINKLERED</p> <p>S</p> <p>N</p> <p>E</p> <p>W</p>	<p>KEY PLAN</p>
---	-----------------

<p>Drawn FJB</p> <p>Checked DHL</p> <p>Date 15 JAN 95</p>	<p>DRAWING NO. 53-E27</p> <p>Dep. 27 of 71</p>
---	---



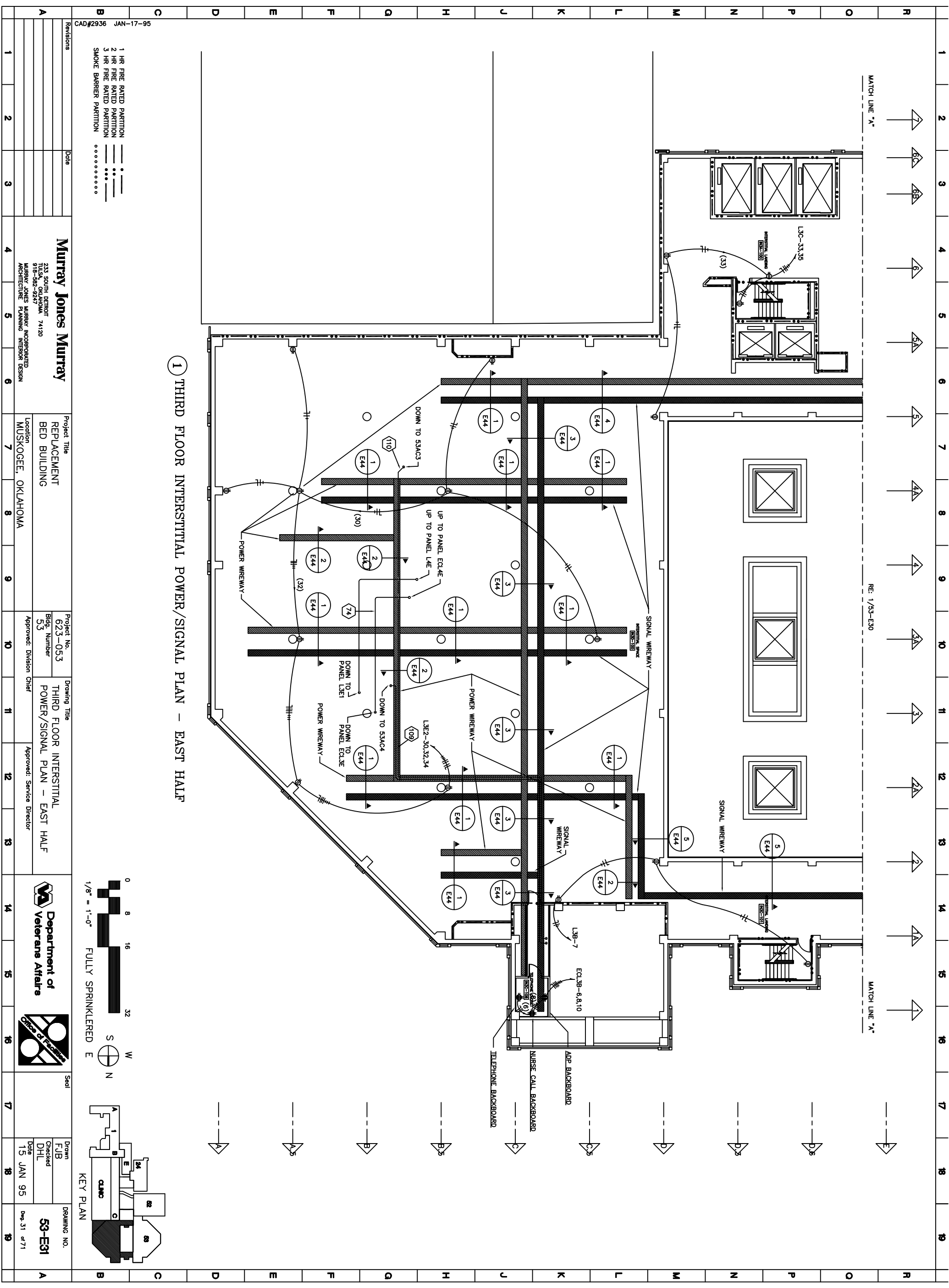
1 THIRD FLOOR INTERSTITIAL POWER/SIGNAL PLAN - WEST HALF

- 1 HR FIRE RATED PARTITION
- 2 HR FIRE RATED PARTITION
- 3 HR FIRE RATED PARTITION
- SMOKE BARRIER PARTITION



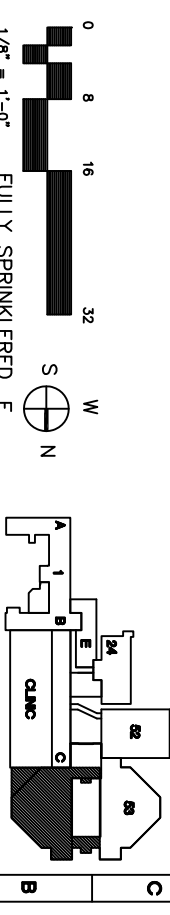
Murray Jones Murray 233 SOUTH DETROIT TULSA, OKLAHOMA 74120 918-582-9247 MURRAY JONES MURRAY INCORPORATED ARCHITECTURE PLANNING INTERIOR DESIGN		Project Title REPLACEMENT BED BUILDING	Project No. 623-053 Bldg. Number 53	Drawing Title THIRD FLOOR INTERSTITIAL POWER/SIGNAL PLAN - WEST HALF	Location MUSKOGEE, OKLAHOMA	Approved: Division Chief	Approved: Service Director	Seal	Drawn FJB	Drawing NO. 53-E30
Date	Date	Date	Date	Date	Date	Date	Date	Checked DHL	Date 15 JAN 95	Dep. 30 of 71

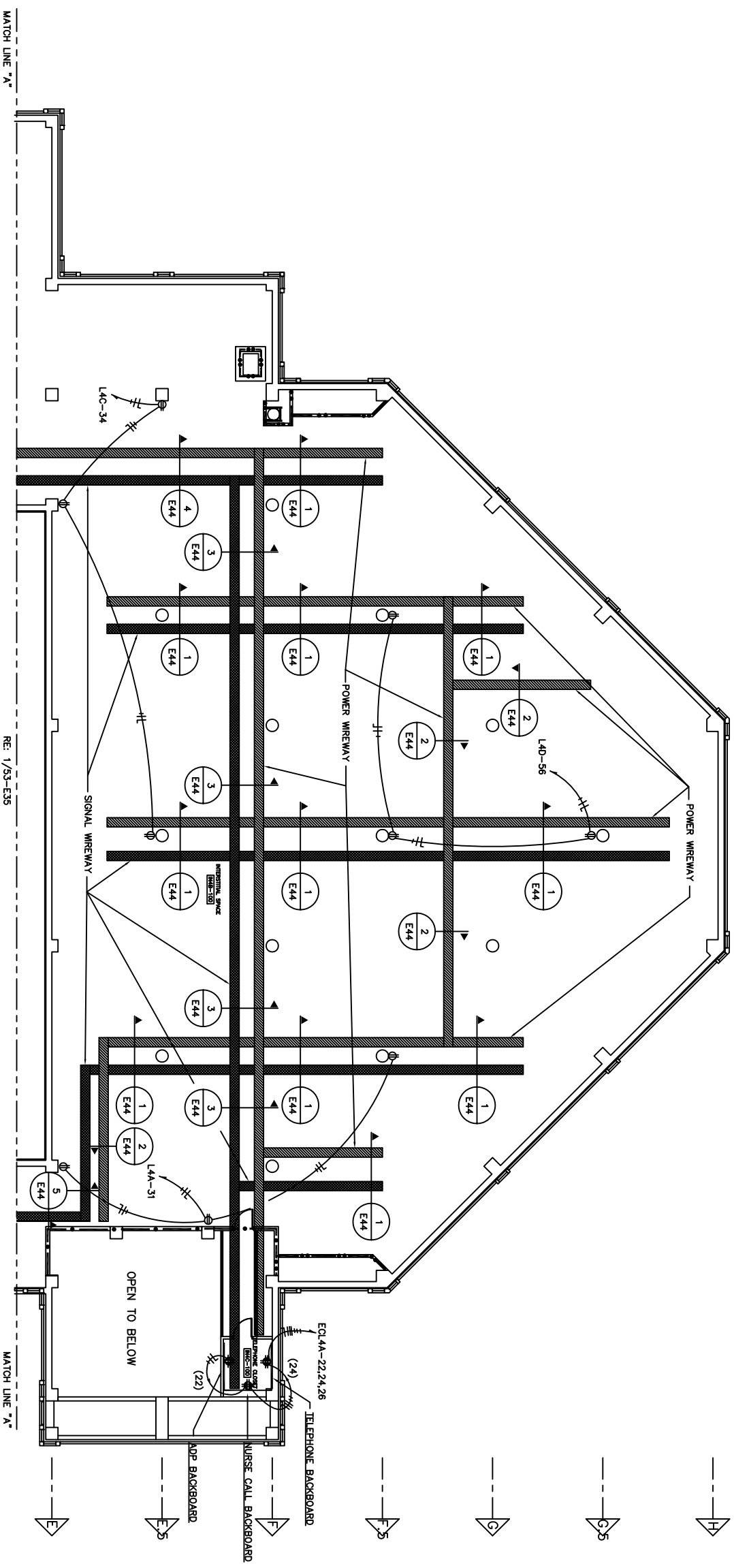
Revisions	Date	Description



1 THIRD FLOOR INTERSTITIAL POWER/SIGNAL PLAN - EAST HALF

Revisions 1 HR FIRE RATED PARTITION 2 HR FIRE RATED PARTITION 3 HR FIRE RATED PARTITION SMOKE BARRIER PARTITION		Date 1 2 3 4 5 6 7 8 9 10 11 12 13 14 15 16 17 18 19	
Murray Jones Murray 233 SOUTH DETROIT TULSA, OKLAHOMA 74120 918-582-9247 MURRAY JONES MURRAY INCORPORATED ARCHITECTURE PLANNING INTERIOR DESIGN		Project Title REPLACEMENT BED BUILDING Location MUSKOGEE, OKLAHOMA	
Project No. 623-053 Bldg. Number 53		Drawing Title THIRD FLOOR INTERSTITIAL POWER/SIGNAL PLAN - EAST HALF	
Approved: Division Chief		Approved: Service Director	
Draft FJB Checked DHL Date 15 JAN 95		DRAWING NO. 53-E31 Dep. 31 of 71	

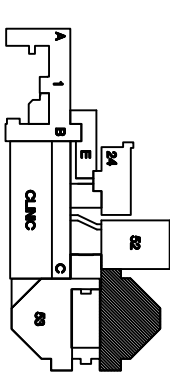
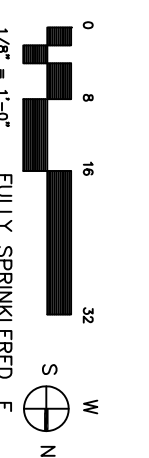




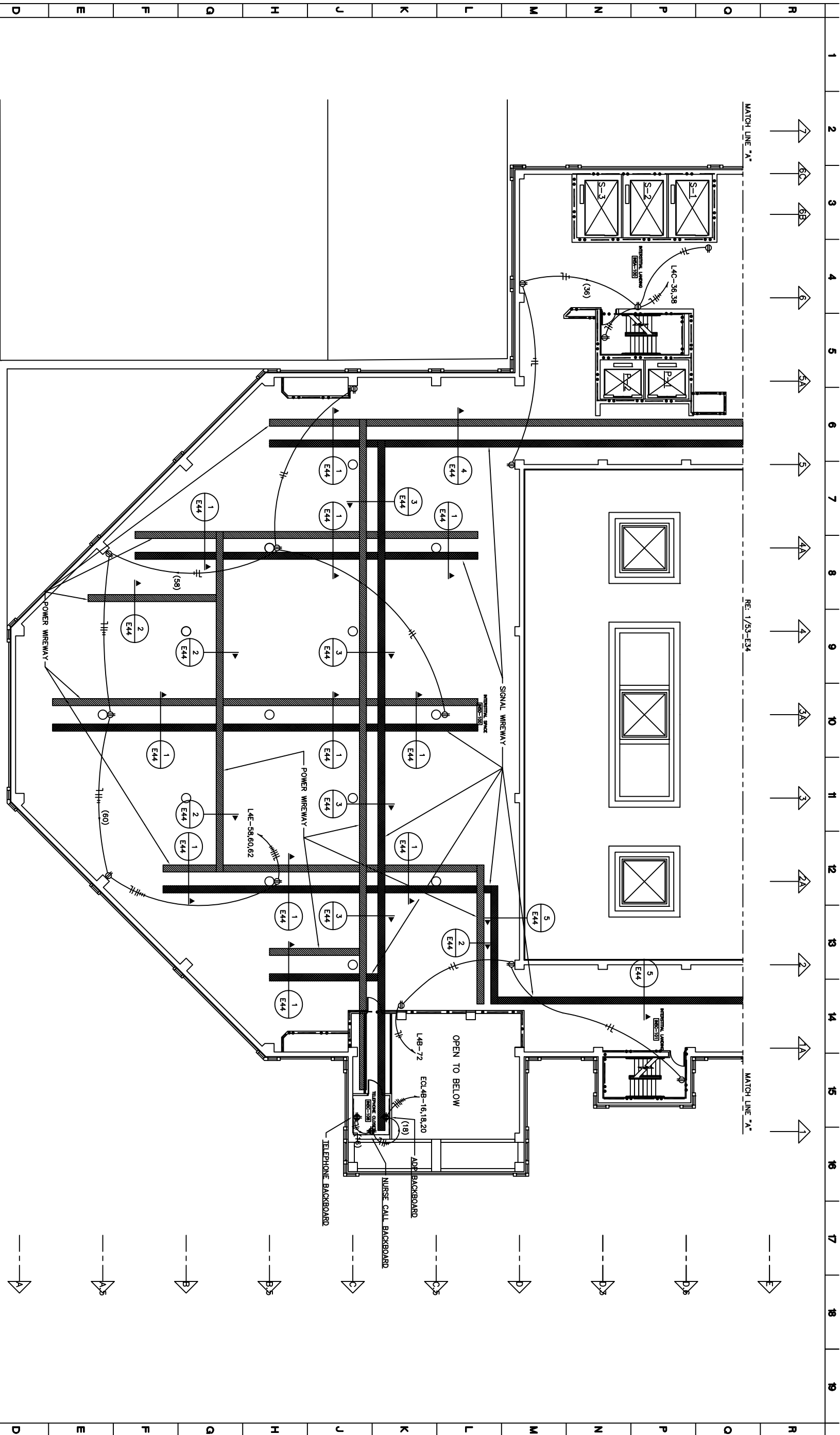
1 FOURTH FLOOR INTERSTITIAL POWER/SIGNAL PLAN - WEST HALF

CAD#2956 JAN-17-95

Revisions	Date
1 HR FIRE RATED PARTITION	----
2 HR FIRE RATED PARTITION	-----
3 HR FIRE RATED PARTITION
SMOKE BARRIER PARTITION



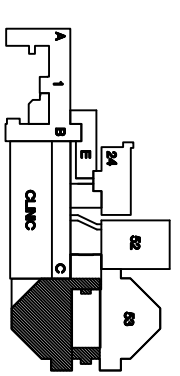
Murray Jones Murray 233 SOUTH DETROIT TULSA, OKLAHOMA 74120 918-582-9247 MURRAY JONES MURRAY INCORPORATED ARCHITECTURE PLANNING INTERIOR DESIGN		Project Title REPLACEMENT BED BUILDING	Project No. 623-053	Drawing Title FOURTH FLOOR INTERSTITIAL POWER/SIGNAL PLAN - WEST HALF	Dept. Department of Veterans Affairs	Drawn FJB	DRAWING NO. 53-E34
Location MUSKOGEE, OKLAHOMA		Bldg. Number 53	Approved: Division Chief	Approved: Service Director	Date 15 JAN 95	Checked DHL	Dep. 34 of 71
1	2	3	4	5	6	7	8



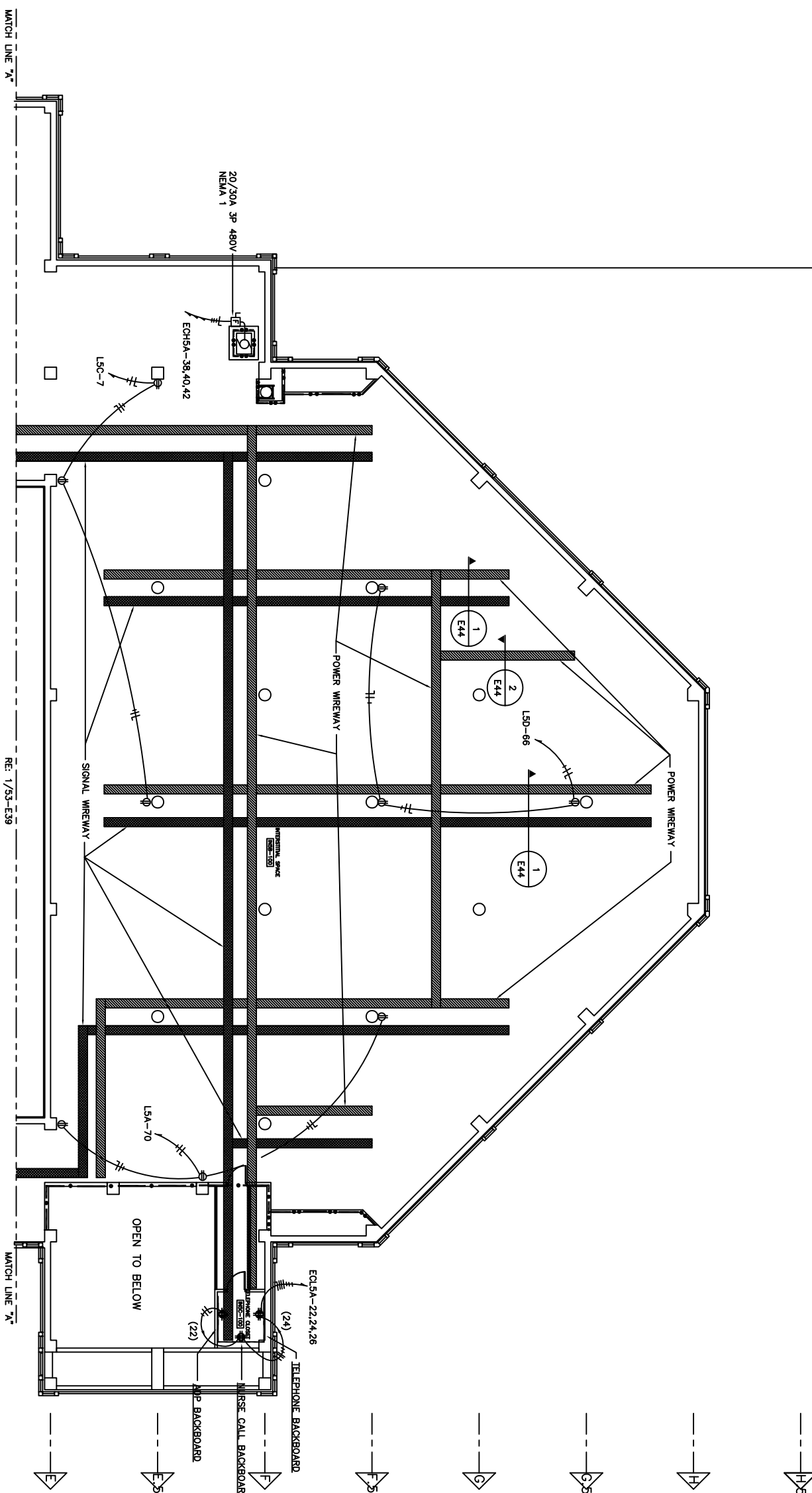
1 FOURTH FLOOR INTERSTITIAL POWER/SIGNAL PLAN - EAST HALF

CAD#2958 JAN-17-95

Revisions	Date
1 HR FIRE RATED PARTITION
2 HR FIRE RATED PARTITION
3 HR FIRE RATED PARTITION
SMOKE BARRIER PARTITION



Murray Jones Murray 233 SOUTH DETROIT TULSA, OKLAHOMA 74120 918-582-9247 MURRAY JONES MURRAY INCORPORATED ARCHITECTURE PLANNING INTERIOR DESIGN		Project Title REPLACEMENT BED BUILDING	Project No. 623-053	Drawing Title FOURTH FLOOR INTERSTITIAL POWER/SIGNAL PLAN - EAST HALF	Dept of Veterans Affairs	Scale 1/8" = 1'-0"	Drawn FJB	DRAWING NO. 53-E35
Location MUSKOGEE, OKLAHOMA		Bidg. Number 53	Approved: Division Chief 	Approved: Service Director 		Checked DHL	Date 15 JAN 95	Dep. 35 of 71
Revisions 1 2 3	Date 	Project Title REPLACEMENT BED BUILDING	Project No. 623-053	Drawing Title FOURTH FLOOR INTERSTITIAL POWER/SIGNAL PLAN - EAST HALF	Dept of Veterans Affairs	Scale 1/8" = 1'-0"	Drawn FJB	DRAWING NO. 53-E35
1 2 3	Date 	Location MUSKOGEE, OKLAHOMA	Bidg. Number 53	Approved: Division Chief 		Scale 1/8" = 1'-0"	Checked DHL	Date 15 JAN 95



① FIFTH FLOOR INTERSTITIAL POWER/SIGNAL PLAN - WEST HALF

CAD#2978 JAN-17-95

Revisions	Date
1 HR FIRE RATED PARTITION
2 HR FIRE RATED PARTITION
3 HR FIRE RATED PARTITION
SMOKE BARRIER PARTITION

0 8 16 32
 1/8" = 1'-0"
 FULLY SPRINKLERED
 E

W N

KEY PLAN

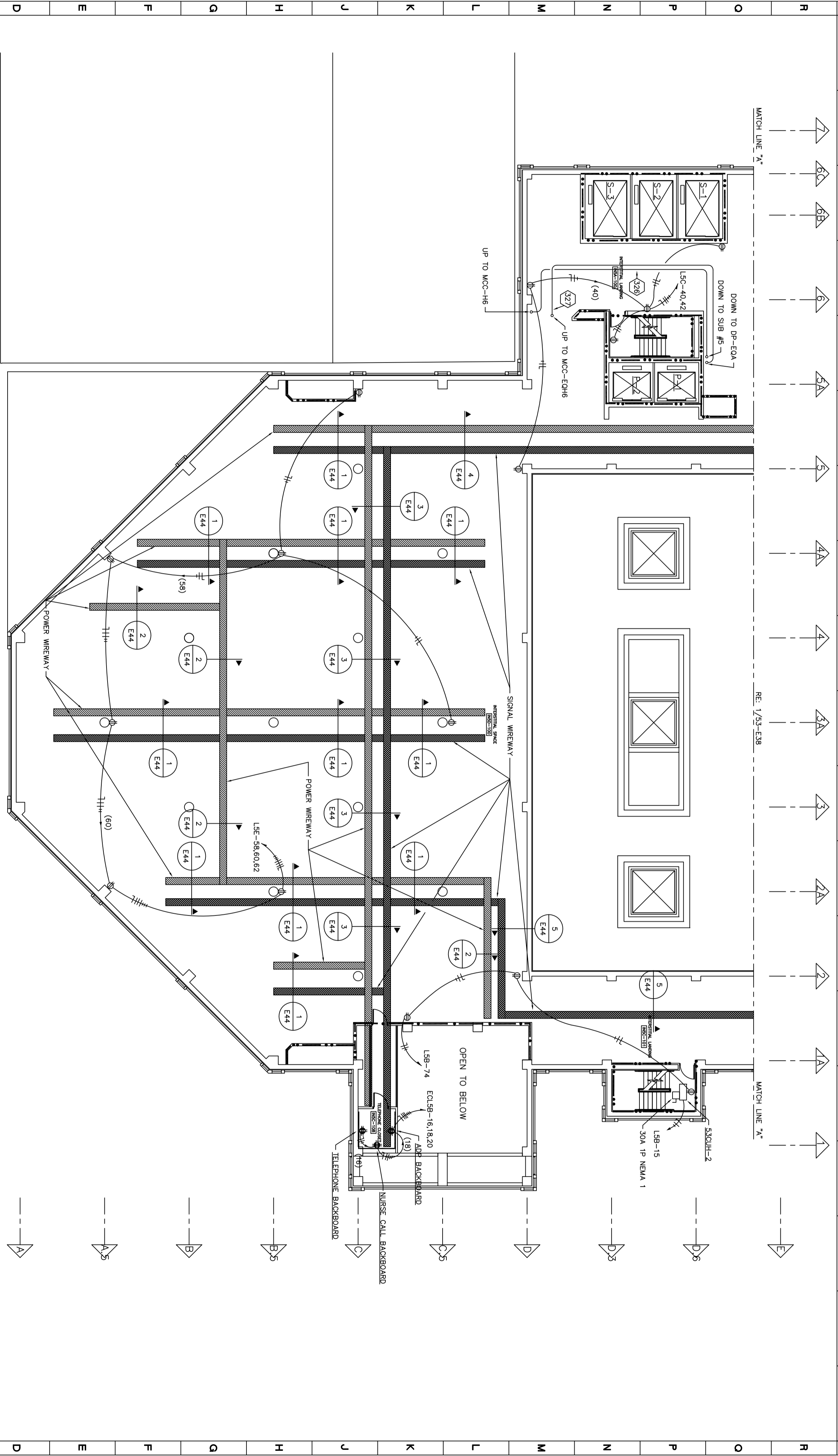
Murray Jones Murray 233 SOUTH DETROIT TULSA, OKLAHOMA 74120 918-582-9247 MURRAY JONES MURRAY INCORPORATED ARCHITECTURE PLANNING INTERIOR DESIGN				Project Title REPLACEMENT BED BUILDING		Project No. 623-053		Drawing Title FIFTH FLOOR INTERSTITIAL POWER/SIGNAL PLAN - WEST HALF	
Location MUSKOGEE, OKLAHOMA				Bidg. Number 53		Approved: Division Chief		Approved: Service Director	
Revisions		Date		Drawn FJB		Checked DHL		Date 15 JAN 95	
1		2		3		4		53-E38 Dep. 38 of 71	



Scale

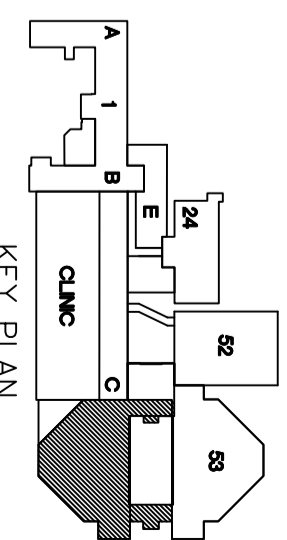
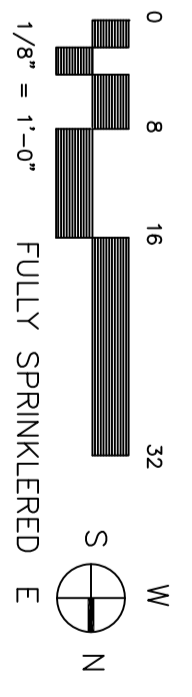
DRAWING NO.

1 2 3 4 5 6 7 8 9 10 11 12 13 14 15 16 17 18 19



1 FIFTH FLOOR INTERSTITIAL POWER/SIGNAL PLAN - EAST HALF

- 1 HR FIRE RATED PARTITION
- 2 HR FIRE RATED PARTITION
- 3 HR FIRE RATED PARTITION
- SMOKE BARRIER PARTITION



Revisions		Date
1		
2		
3		
4		
5		
6		
7		
8		
9		
10		
11		
12		
13		
14		
15		
16		
17		
18		
19		

Murray Jones Murray 233 SOUTH DETROIT TULSA, OKLAHOMA 74120 918-582-9247 MURRAY JONES MURRAY INCORPORATED ARCHITECTURE PLANNING INTERIOR DESIGN		Project Title REPLACEMENT BED BUILDING	Project No. 623-053	Drawing Title FIFTH FLOOR INTERSTITIAL POWER/SIGNAL PLAN - EAST HALF	 Department of Veterans Affairs	Location MUSKOGEE, OKLAHOMA	Bidg. Number 53	Approved: Division Chief	Approved: Service Director	Seal	Drawn FJB	DRAWING NO. 53-E39
											Checked DHL	Date 15 JAN 95

CAD#2980 JAN-17-95