

C:\Users\VA005HNSCP1\AppData\Local\Temp\KdJulaab_23752\VA-403.dwg December 01, 2014 - 2:22pm VA005HNSCP1
three eighths inch = one foot
0 4 8 16
one eighth inch = one foot
0 4 8 16
one quarter inch = one foot
0 4 8 16
one half inch = one foot
0 4 8 16
three quarters inch = one foot
0 2 4 6 8
one inch = one foot
0 6 12
one and one half inches = one foot
0 6 12
three inches = one foot
0 6 12

RECORD DOCUMENTS	17SEP08
For Construction	08-23-08
Revisions:	Date

CONSULTANTS:

ARCHITECT/ENGINEERS:

Drawing Title 1/16" = 1'-0" HVAC PIPING PLAN 1ST LEVEL
Approved: Project Director

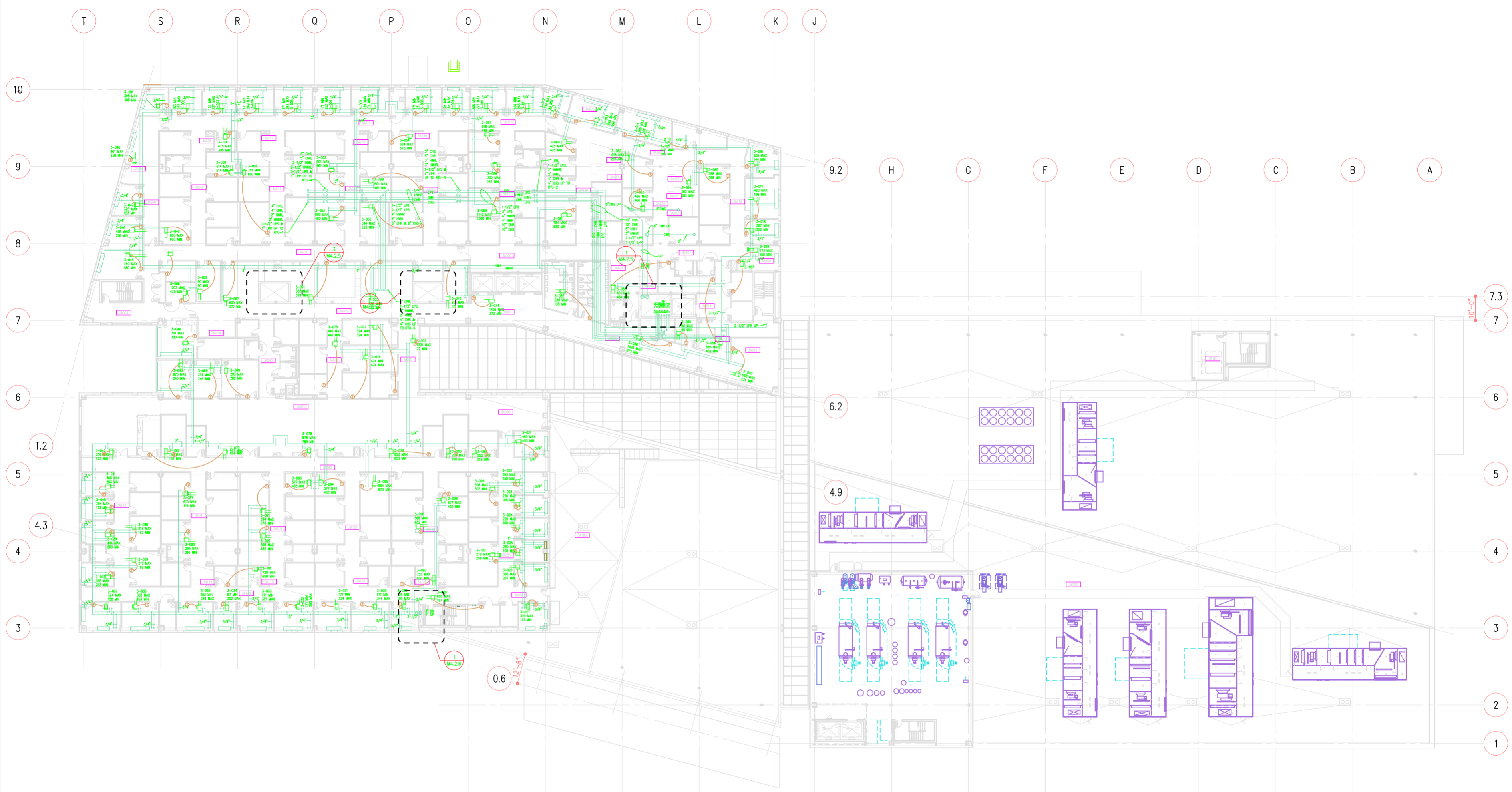
Project Title CHALMERS P. WYLIE VA OUTPATIENT CLINIC
Location COLUMBUS, OHIO
Date
Checked
Drawn

Project Number 757-001 Building Number
Drawing Number H3.1 Dwg. of

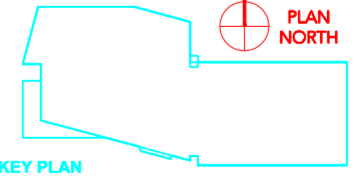
Office of
Facilities
Management

Department of Veterans Affairs

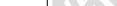
C:\Users\VAHQSP1\AppData\Local\Temp\VAHQSP1_25000\VAHQSP1_25000.dwg December 01, 2014 - 2:53pm VAHQSP1
one eighth inch = one foot
one quarter inch = one foot
one half inch = one foot
three eighths inch = one foot
three quarters inch = one foot
one inch = one foot
one and one half inches = one foot
two inches = one foot
three inches = one foot

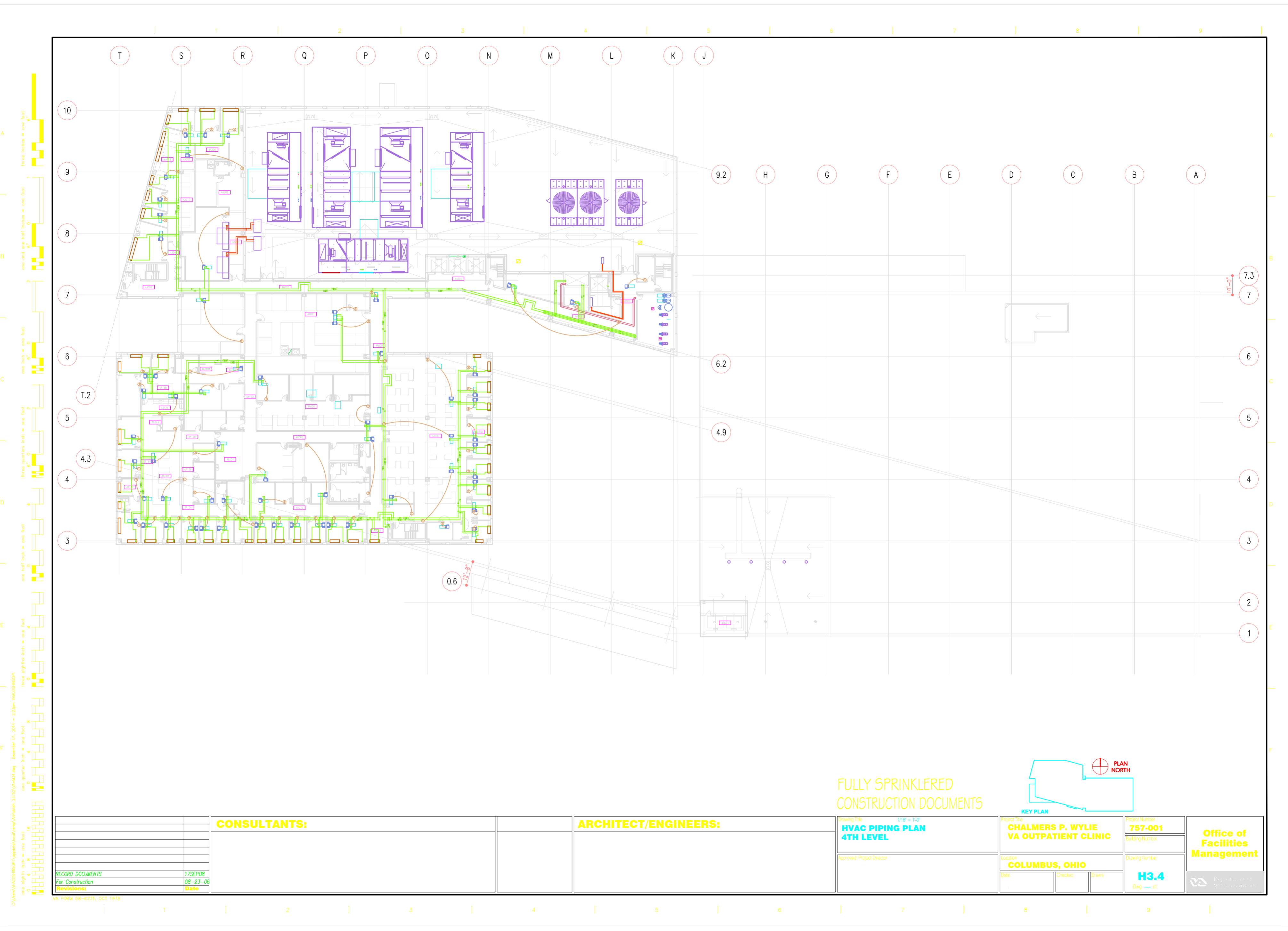


FULLY SPRINKLERED
CONSTRUCTION DOCUMENTS

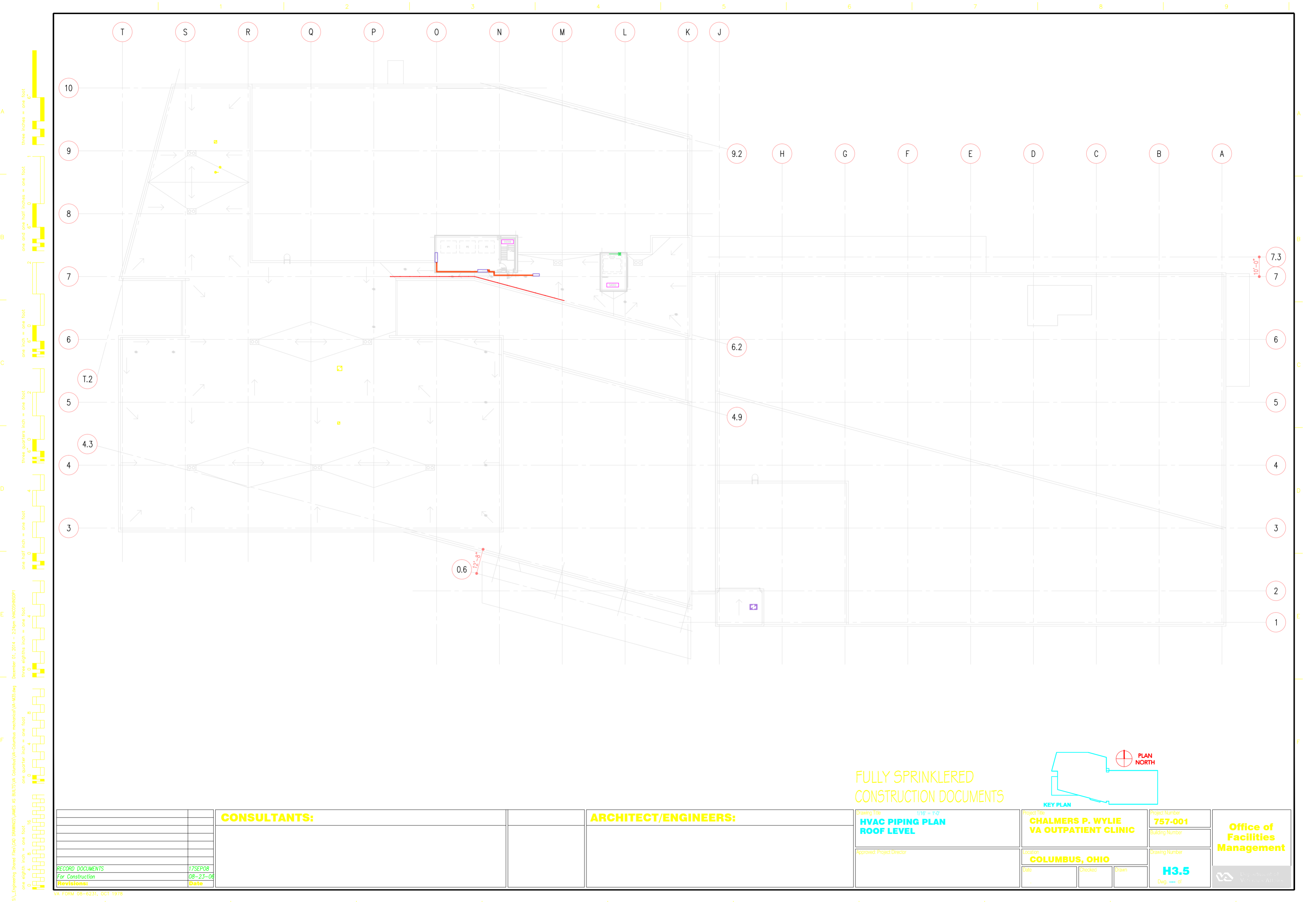


		CONSULTANTS:		ARCHITECT/ENGINEERS:	Drawing Title 1/16" = 1'-0" HVAC PIPING PLAN 3RD LEVEL	Project Title CHALMERS P. WYLIE VA OUTPATIENT CLINIC	Project Number 757-001	Office of Facilities Management	
							Building Number		
						Approved: Project Director	Location COLUMBUS, OHIO		Drawing Number H3.3
						Date	Checked		Drawn
RECORD DOCUMENTS	17SEP08								
For Construction	08-23-08								
Revisions:	Date								

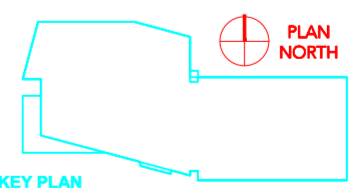
 Department of
Facilities Management

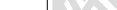


		CONSULTANTS:		ARCHITECT/ENGINEERS:	Drawing Title 1/16" = 1'-0" HVAC PIPING PLAN 4TH LEVEL	Project Title CHALMERS P. WYLIE VA OUTPATIENT CLINIC	Project Number 757-001	Office of Facilities Management
							Building Number	
							Drawing Number	
							H3.4	
							Dwg. --- of	
RECORD DOCUMENTS For Construction	17SEP08 08-23-08				Approved: Project Director	Location COLUMBUS, OHIO		
Revisions:	Date					Date	Checked	Drawn



FULLY SPRINKLERED
CONSTRUCTION DOCUMENTS



		CONSULTANTS:		ARCHITECT/ENGINEERS:	Drawing Title HVAC PIPING PLAN ROOF LEVEL		Project Title CHALMERS P. WYLIE VA OUTPATIENT CLINIC		Project Number 757-001		Office of Facilities Management	
										Building Number		
										Drawing Number		
										H3.5		
										Dwg. --- of		
RECORD DOCUMENTS For Construction		17SEP08 08-23-08			Approved: Project Director		Location COLUMBUS, OHIO				 Department of Veterans Affairs	
Revisions:		Date			Date		Checked		Drawn			

S:\Engineering Shared Files\00 DRAWINGS\AMES 65 BUILD\VA-Columbus\VA-Columbus mechanical\VA-MB5.rvt December 01, 2014 - 2:24pm VACOSHMS001
one eighth inch = one foot
one quarter inch = one foot
one half inch = one foot
three eighths inch = one foot
three quarters inch = one foot
one inch = one foot
one and one half inches = one foot
three inches = one foot
one eighth inch = one foot
one quarter inch = one foot
one half inch = one foot
three eighths inch = one foot
three quarters inch = one foot
one inch = one foot
one and one half inches = one foot
three inches = one foot