



1010 Kings Highway South
Building Two – 2nd Floor
Cherry Hill, NJ 08034

Phone: 856-429-4000
Fax: 856-429-5002
E-mail: office@miller-remick.com

Request for Information

Contractor RFI No.: **1**
Contractor/Supplier: **C&S**

Request Date: **11/26/14**

M-R RFI Log No.: **03 (Pre-Bid)**

Response Date: **00/00/14**

VA Project No.: **528-13-C-0179**

M-R Project No.: **3-0499-0046**

Project Name: **Renovate 6B Ward Syracuse VAMC**

RFI: (Attachments ☐ Yes ☒ No)

1. TU-09 and TU-17 are on drawings but not on schedule?
2. TU-6 is listed twice on schedule, is there one or two?
3. TU-6, TU-7, TU-8, TU-10, TU-12, TU-14 and TU-15 are on schedule but not on drawing. Do they exist?
4. Addendum -1 drawings have nothing clouded. What where the changes on this addendum?
5. Exception is taken to 50% expandable capability of medical gas area alarms. Because the panels are located in the same room, we propose one panel with 8 modules - it is full. Expansion would require a new panel (and zone valve box-ie. Opening the wall.)
6. Drawings P-161,162,163 all the medical gas drops show a single drop at the head wall, Isometric drawings on P-303 has single drops at the head walls. Drawing AS-204 –detail; 1F has medical gas boxes on both sides of the bed. What is the correct detail? Are there to be medical gas boxes both sides of the beds?
7. Drawing AS-204 detail-1F has a manufactured head wall drawn, is this what is being provided? If so is the layout and count of devises on this Detail correct?

RFI Response (with attached revised drawings):

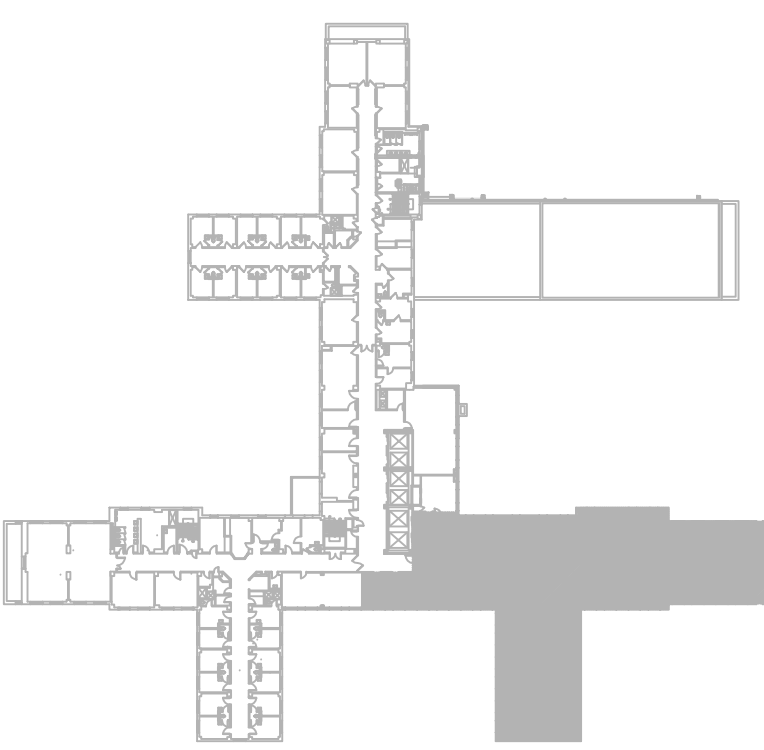
1. Drawing MH-101 was revised to change TU-6 to TU-9. Drawing MP-103 was revised to change TU-17 to TU-15. See attached revised drawings with the changes clouded.
2. Drawing M-602 was revised to change TU-6 in Soiled Utility to TU-9. See attached revised drawings with the change clouded.
3. These terminal units are shown on the ductwork plans (MH drawings) but not on the piping plans (MP drawings) since there are no heating coils associated with these boxes.
4. The changes to the drawings have to do with a partition type change. The changes are clouded and shown on Drawings GI-100, AS-102, & AS-400.
5. The use of a double or 8 module alarm panel would provide expansion space of two modules (one per wing) which is acceptable subject to owner approval.

RFI Response (continued):

6. As noted on plumbing plan drawings to refer to detail 9 on drawing P-401 which indicates multiple medical gas outlets per bed and refers to the architectural drawings for outlet quantity and arrangement.
7. Yes, that is what is being specified. Yes, detail is correct.

**T. Harrigan, PE
Miller-Remick**

11/26/14



**BID DOCUMENTS
FULLY SPRINKLERED**

1. DUCT SIZES SERVING VAV BOXES AND AIR FLOW CONTROL BOXES ARE THE SAME AS THE INLET SIZE OF THE BOX UNLESS NOTED OTHERWISE.
2. REFERENCE DRAWING MP-101 FOR THERMOSTAT LOCATIONS.
3. CONTRACTOR TO COORDINATE PATIENT LIFT TRACK SUPPORTS WITH DUCT WORK AND PIPING.
4. CONTRACTOR TO COORDINATE DUCT INSTALLATION WITH LIGHTING FIXTURES AND PROVIDE CHANGE IN DUCT ELEVATION AS REQUIRED.

1. CONTRACTOR TO CAP EXISTING DUCT.
2. CONTRACTOR TO CONNECT TO THE EXISTING EXHAUST SYSTEM AND BALANCE TO THE CFM SHOWN ON DRAWINGS.
3. CONTRACTOR SHALL COORDINATE WITH INFECTION CONTROL AND PHASING PLANS.

1 6TH FLOOR
SCALE: 1/4" = 1'-0"



Miller-Remick LLC
 M.E.P. & Structural Engineering
 A Service Disabled Veteran Owned
 Small Business

1010 KINGS HIGHWAY SOUTH
 CHERRY HILL, NEW JERSEY 08034
 PHONE: (856)428-4000
 FAX: (856)428-5002



**QPK
DESIGN**
ARCHITECTURE
ENGINEERING
SITE & PLANNING

450 SO. SALINA STREET P.O. BOX 29
STRAUSVILLE, NEW YORK 13501-0029
TEL 315.472.7806 FAX 315.472.7800

QPK Job Number: 213247.00

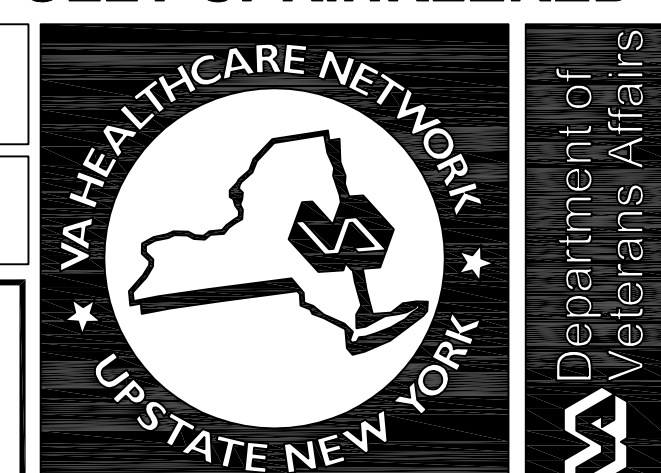


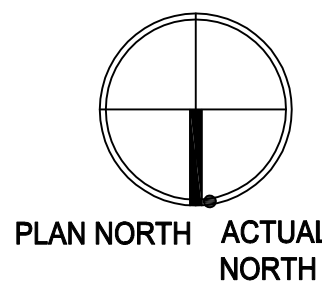
Drawing Title

**MECHANICAL
6TH FLOOR - DUCTWORK
PLAN - NEW WORK**

Approved: Project Director

Date	10-15-2014
Project No.	528A7-13-745
DRAWING NO.	MH-101
Dwg. 31	Of 81



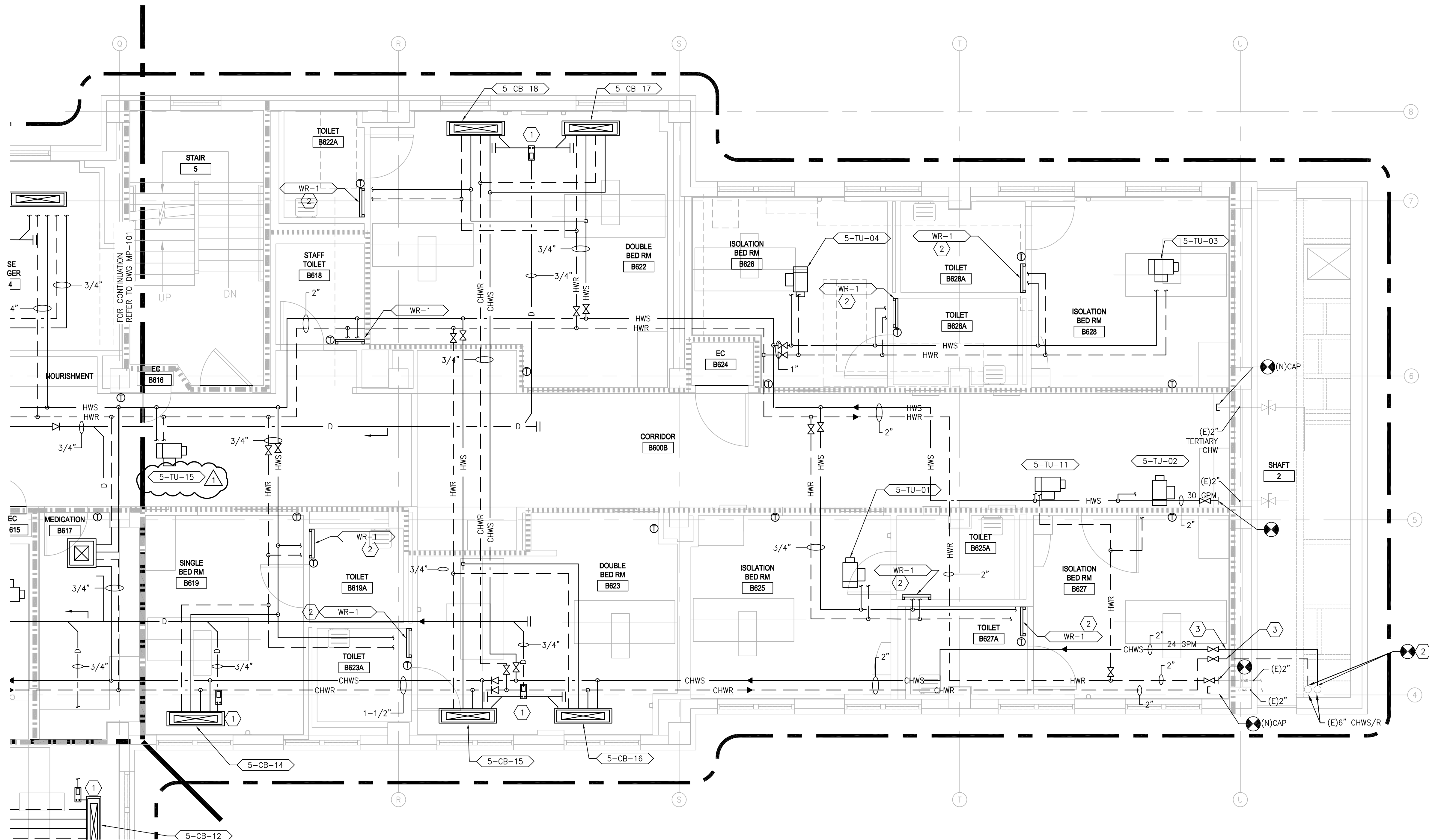


GENERAL SHEET NOTES:

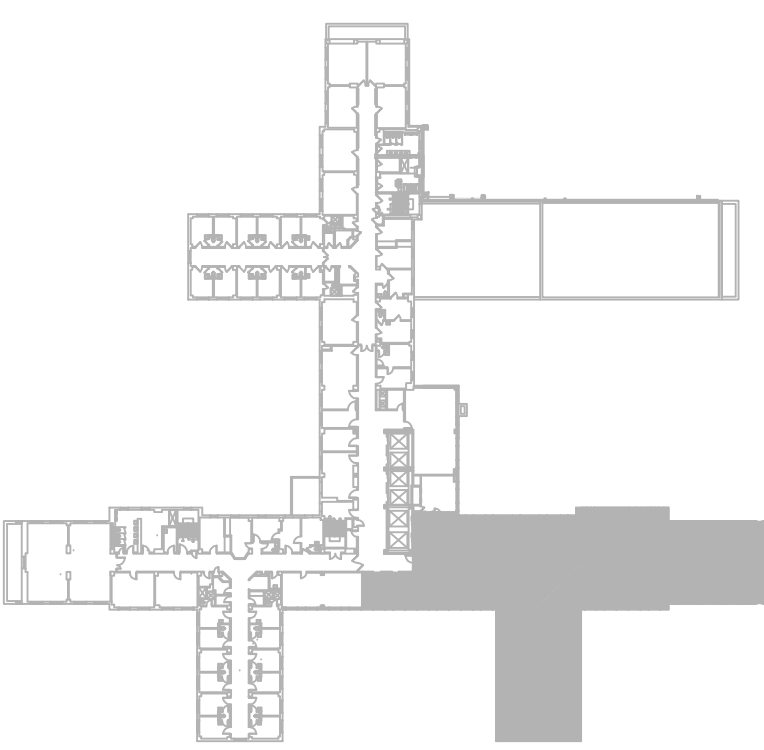
- CONTRACTOR TO ROUTE DISCHARGE OF CONDENSATE PUMP TO NEAREST INDIRECT DRAIN LOCATED IN ROOM B607. SEE SCHEDULE AND DETAIL FOR FURTHER CLARIFICATION.
- ALL BRANCH PIPING TO BE 3/4" UNLESS NOTED OTHERWISE. PIPE SIZE BASED ON 2" AND UNDER IS COPPER PIPING, OVER 2" IS SCHEDULE 40.

SHEET KEYNOTES:

- CONTRACTOR TO PROVIDE LITTLE GIANT CONDENSATE OR APPROVED EQUAL CONDENSATE PUMP MODEL VCCC-20ULS 115V/1.5 AMP WITH 10' HEAD AND 45 GPM.
- COORDINATE PIPING CONNECTIONS WITH ACCESS PANEL LOCATIONS. REFER TO 10/M-501 & ARCHITECTURAL ELEVATIONS.
- CONTRACTOR TO ROUTE NEW CHILLED WATER SUPPLY AND RETURN PIPING THROUGH SHAFT AND TIE INTO EXISTING SECONDARY (45°) CHILLED WATER LOOP. CONTRACTOR TO ENSURE THAT PIPE PENETRATION MAINTAINS EXISTING WALL FIRE AND SMOKE RATING.



1 6TH FLOOR - MECHANICAL PIPING PLAN
SCALE: 1/4" = 1'-0"



KEY PLAN
SCALE: NONE

BID DOCUMENTS
FULLY SPRINKLERED

<div>Revisions</div> <div>REVISED TU TAG NUMBER PER RFI 1</div> <div>11-26-14</div> <div>Date</div>		<div> Miller-Remick LLC M.E.P. & Structural Engineering A Service Disabled Veterans Owned Small Business 1010 KINGS HIGHWAY SOUTH CHERRY HILL, NEW JERSEY 08034 PHONE: (856) 425-4000 FAX: (856) 425-9002</div> <div> SDVOSB Service Disabled Veterans Owned Small Business</div>	<div> QPK DESIGN ARCHITECTURE ENGINEERING SITE & PLANNING 400 1/2 JAVANA STREET SYRACUSE, NEW YORK 13201-5027 TEL: 315-475-7866 FAX: 315-475-7860 OPK Job Number: 21247.00</div>	<div> MILLER-REMIK LLC PROFESSIONAL ENGINEER</div>	<div>Reviewed: Facility Manager</div> <div>Reviewed: Facility Director</div> <div>Reviewed:</div> <div>Reviewed:</div>	<div>Drawing Title</div> <div>MECHANICAL 6TH FLOOR - PIPING PLAN</div> <div>Approved: Project Director</div>	<div>Project Title</div> <div>RENOVATION FOR 6B WARD</div> <div>Building Number</div> <div>NO. 1</div> <div>Location</div> <div>VAMC SYRACUSE, NY</div>	<div>Date</div> <div>10-15-2014</div> <div>Project No.</div> <div>528A7-13-745</div> <div>DRAWING NO.</div> <div>MP-103</div> <div>Dwg. 36 of 81</div>	<div> VA HEALTHCARE NETWORK UPSTATE NEW YORK</div> <div> Department of Veterans Affairs</div>
---	--	---	---	---	--	---	--	---	---

NOTES
1. INSTALL PER THE MANUFACTURERS RECOMMENDATIONS
2. THE CONTRACTOR IS RESPONSIBLE FOR TRANSITIONING FROM THE DUCT WORK TO THE INLET OF THE TERMINAL UNIT.


NOTES:

1. CONTRACTOR TO MAINTAIN 15 TIMES THE DIAMETER OF STRAIGHT DUCT PRIOR TO INLET OF DEVICE.
2. CONTRACTOR TO INSTALL PER THE MANUFACTURER.
3. CONTRACTOR IS RESPONSIBLE FOR TRANSITIONING FROM THE CONTROL DEVICE TO THE DUCT WORK.




BID DOCUMENTS FULLY SPRINKLERED



	11-26-14
Revisions	Date

The image contains three logos. On the left is the Miller-Remick LLC logo, featuring a stylized triangle of horizontal lines to the left of the text "Miller-Remick LLC" and "A Service Disabled Veteran Owned Small Business". In the center is the SDVOSB logo, which is a circular emblem with "UNITED STATES OF AMERICA" at the top, "SDVOSB" in the center, and "C.V.E." at the bottom, flanked by olive and arrow branches. On the right is the QPK Design logo, consisting of a large white "Q" on a black square background, followed by the text "QPK DESIGN ARCHITECTURE ENGINEERING SITE & PLANNING" and contact information: "450 SO. SANRAV STREET P.O. BOX 22 STANFORD, NEW YORK 14155-0022" and "QPK Job Number: 21324700".

MILLER-REMICK LLC
PROFESSIONAL ENGINEER



The seal is circular with the text "STATE OF NEW YORK" at the top and "LICENSED PROFESSIONAL ENGINEER" at the bottom. In the center, it reads "MATTHEW T. COPONE" above a small crest. Below the crest is the license number "085675-1". A signature is written across the seal.

Reviewed: Facility Manager
Reviewed: Facility Director
Reviewed:
Reviewed:

<p>Drawing Title</p> <p>MECHANICAL SCHEDULES</p>
<p>Approved: Project Director</p>

Project Title		
RENOVATION FOR 6B WARD		
Building Number	Checked	Drawn
NO. 1	GFE	VRR
Location		
VAMC SYRACUSE, NY		

Date	10-15-2014
Project No.	528A7-13-745
DRAWING NO.	M-602
Dwg. 40	Of 81