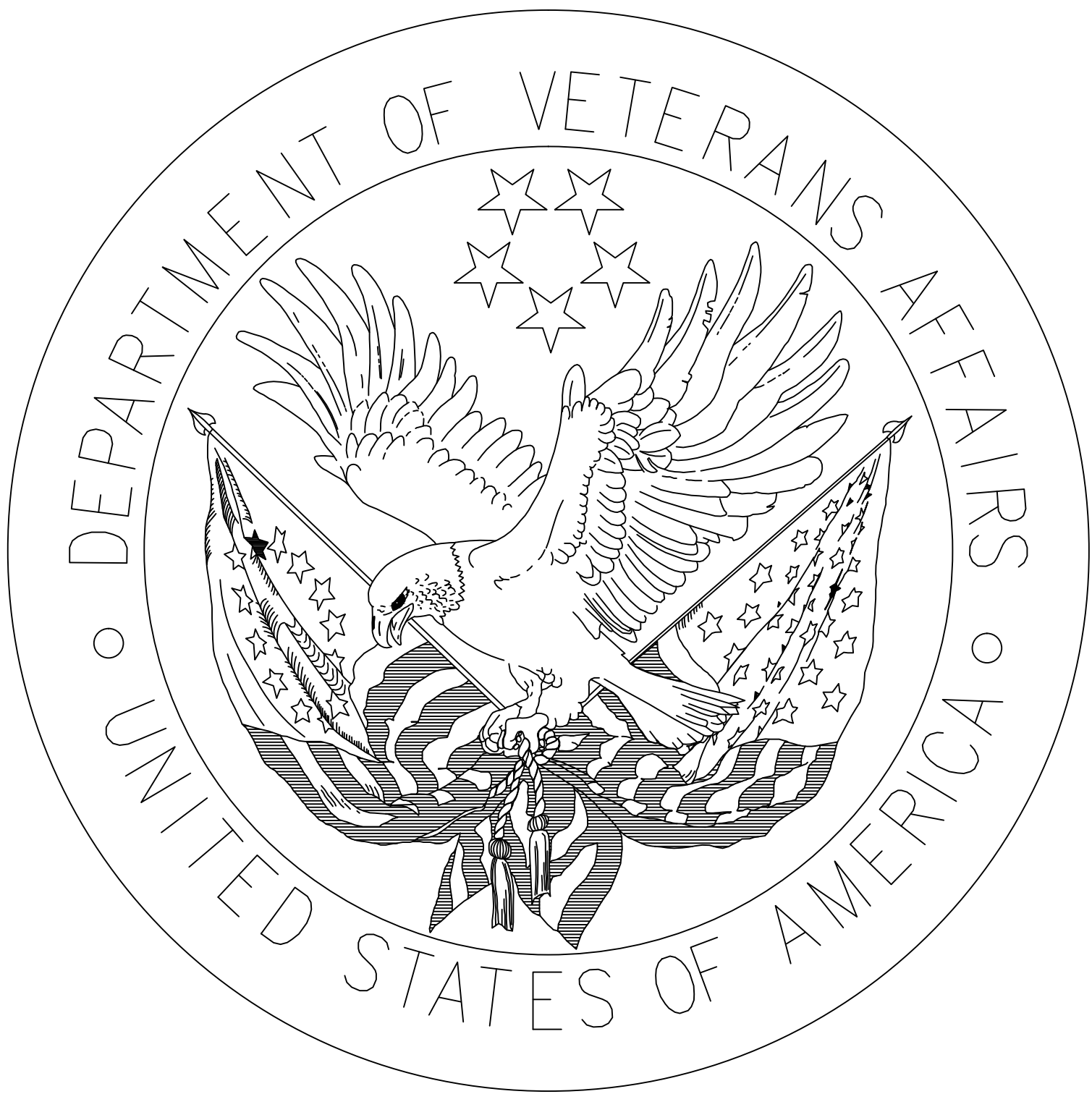


DEPARTMENT OF VETERANS AFFAIRS
SYRACUSE VA MEDICAL CENTER
800 IRVING AVE SYRACUSE, NY 13210

INSTALL REVOLVING DOORS AT MAIN ENTRANCES
PROJECT: 528A7-13-754



Scope of Work:

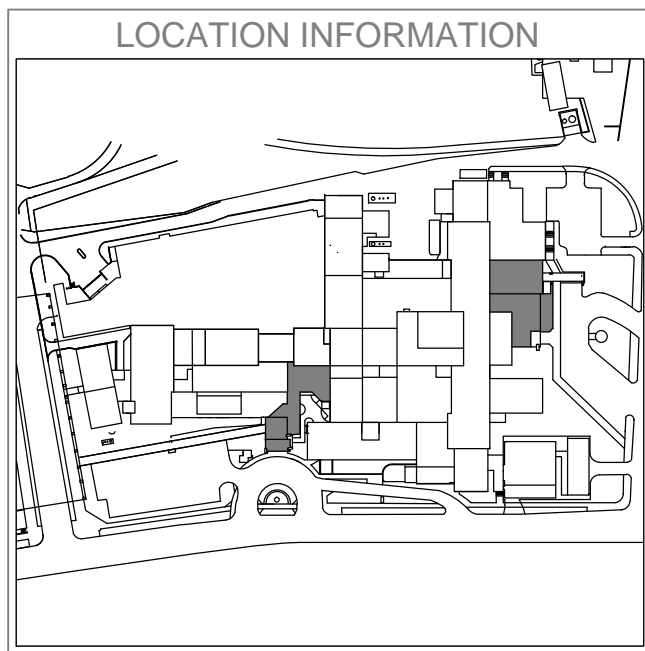
The Syracuse VAMC requires the installation of revolving entrance doors at the Irving Avenue main entrance and the University Place Emergency Department entrance at the VAMC Syracuse. Demolish existing doors, ceiling, flooring, electrical, and sprinkler systems as necessary to support the replacement of the existing sliding and hinged swinging doors with a motorized revolving door and an electric operated handicap entrance hinged swinging door at each location.

Additionally, Install sliding entry door in outer curtain wall of the main entrance vestibule located on Irving Avenue. Demolish existing doors, track, and adjacent curtain wall as necessary to prepare opening for new sliding door installation. Alter, repair and replace sprinkler piping, ceiling system, lighting, flooring, and finishes to facilitating the installation of all doors indicated to be replaced on the drawings. Provide all controls, safeties, signage, and supporting equipment for a successful installation and a complete and operable entry door system.

INDEX	
SHEET NUMBER	CONTENT
G-001	COVER AND INDEX
AD-101	MAIN ENTRANCES, DEMOLITION
A-101	MAIN ENTRANCES, INSTALLATION
A-201	MAIN ENTRANCES, ELEVATIONS
A-501	ARCHITECTURAL DETAILS AND DOOR SCHEDULE
E-101	MAIN ENTRANCES, ELECTRICAL
FP-101	MAIN ENTRANCES, FIRE PROTECTION
S-101	SITE PLAN

Project Notes:

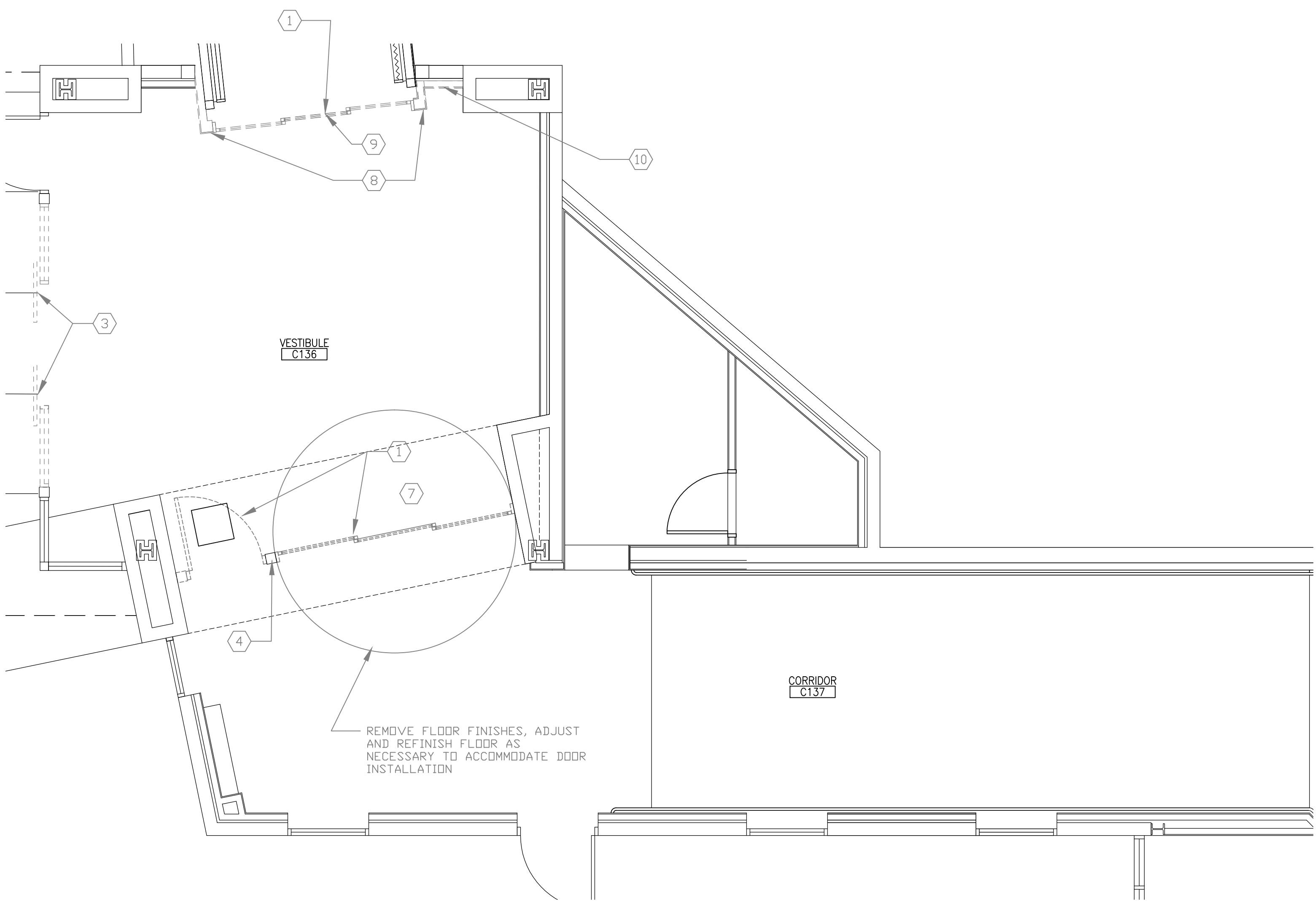
- 1) Installation of the push pad operated automatic swinging doors, and sidewalk at University Place entrance, will occur prior to the commencement of the installation of the revolving doors at both the Irving St. and University Place entrances to ensure a means of egress is available at all times.
- 2) All work that restricts access/egress will be coordinated for nights and weekends so as to minimize patient disruptions.
- 3) Installation shall not occur at both the Irving and Stadium Place entrances concurrently. One full entrance shall remain fully operational at all times throughout the duration of the project. Construction on the second entrance is to be completed only after the operation/completion of the first is deemed to be acceptable by the COR.



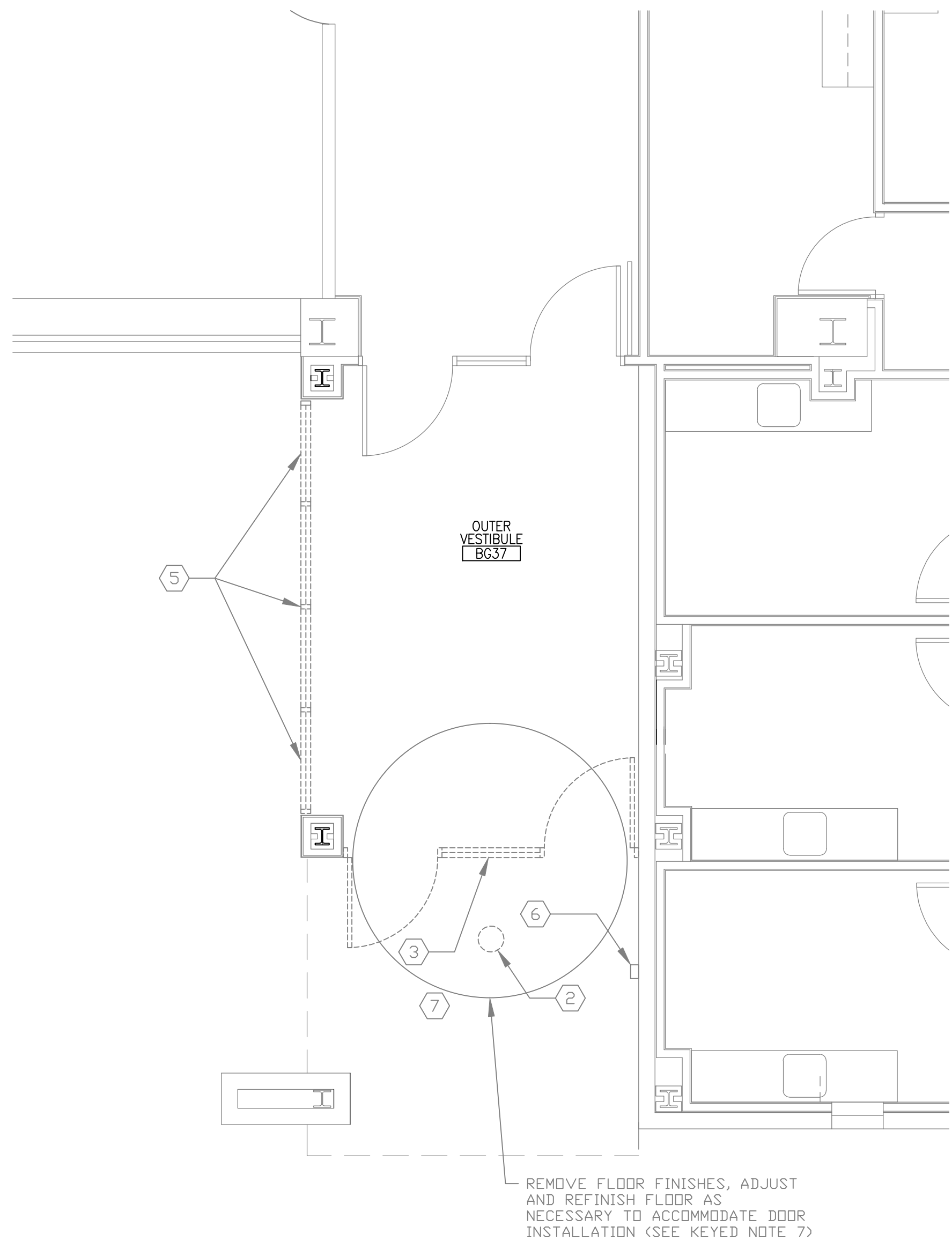
			(Company Logo/Information Block)		Drawing Title COVER SHEET	Project Title INSTALL REVOLVING DOORS AT MAIN ENTRANCES		Date 12/1/2014
						Project No. 528A7-13-754		
					Approved: Facility Manager	Building Number 1	Checked MA	Drawn AWG
						Location VAMC SYRACUSE, NY		DRAWING NO. G-001
Revisions		Date						Dwg. 1 Of 8

VA HEALTHCARE NETWORK
UPSTATE NEW YORK

DEPT. OF VETERANS AFFAIRS



1 FIRST FLOOR ENTRANCE DEMOLITION
1/4" = 1'-0"



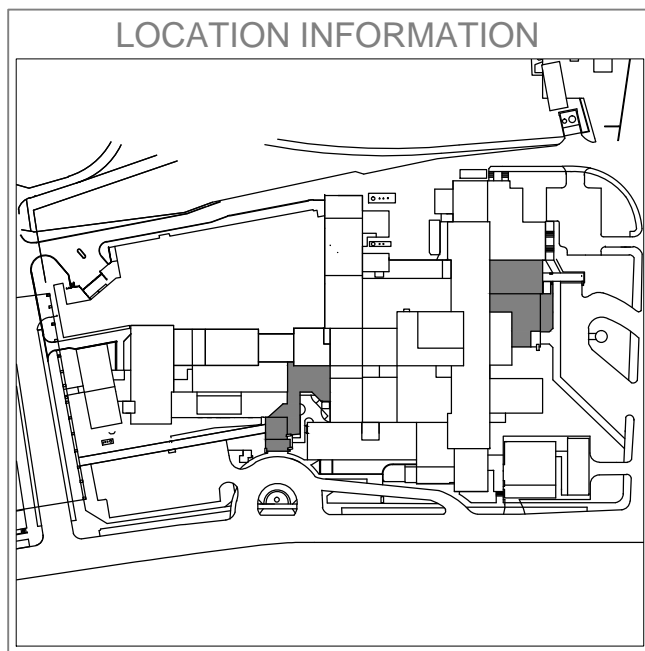
2 GROUND FLOOR ENTRANCE DEMOLITION
1/4" = 1'-0"

KEYED NOTES:

- 1 PRIOR TO INSTALLATION OF REVOLVING DOOR REMOVE EXISTING AUTOMATIC DOOR, INCLUDING FRAME HARDWARE, AND MECHANICAL EQUIP., RETAIN WIRING FOR USE DURING INSTALLATION OF NEW DOORS. REMOVE OVER DOOR HEATER, SAVE FOR RE-USE.
- 2 REMOVE EXISTING RECESSED LIGHT FIXTURE
- 3 REMOVE EXISTING AUTOMATIC DOORS INCLUDING FRAMES, HARDWARE, AND MECH. EQUIPMENT, RETAIN WIRING FOR USE DURING INSTALLATION OF NEW DOOR, DO NOT REMOVE WALL ABOVE EXISTING DOORS
- 4 RETAIN EXISTING 4"x4" TS COLUMN AND ALUMINUM BRAKE METAL WRAP
- 5 REMOVE GLAZING AND STOREFRONT FRAMING, PREPARE SURFACES FOR NEW STOREFRONT WALL INSTALLATION
- 6 REMOVE EXISTING CARD READER, SAVE FOR RE-INSTALLATION NEAR NEW SWINGING DOOR
- 7 RADIANT TUBING LOCATED IN CONCRETE BELOW NEW DOOR LOCATION, USE CAUTION WHEN CHIPPING/CUTTING CONCRETE
- 8 REMOVE EXISTING WALL TO THE EXTENT SHOWN IN ITS ENTIRETY. PATCH AND PREPARE THE DAMAGED FLOOR AND DECK ABOVE FOR NEW WALL AND FINISHES
- 9 REMOVE EXISTING OVER DOOR HEATER, TURN OVER TO MEDICAL CENTER AND REMOVE ALL SERVICING CONDUIT AND WIRING
- 10 REMOVE TWO SWITCHES AND RECEPTACLE, TEMPORARILY FEED POWER TO LIGHTING DURING CONSTRUCTION OF NEW WALL PRIOR TO REPLACING SWITCHES AND RECEPTACLE IN NEW MASONRY WALL. REMOVE FIRE EXTINGUISHER CABINET AND SAVE FOR REINSTALLATION. REMOVE JOHNSON CONTROLS THERMOSTAT AND SAVE FOR REINSTALLATION

GENERAL NOTES:

1. ALL SURFACES EXPOSED OR DAMAGED DURING DEMOLITION ARE TO BE REPAIRED TO AS NEW CONDITION WITH FINISHED MATCHING SURROUNDING. WHERE A UNIFORM APPEARANCE WITH EXISTING FINISHES CANNOT BE PROVIDED AREAS SURROUNDING THOSE DISTURBED BY DEMOLITION SHALL BE REFINISHED SO AS TO PROVIDE UNIFORMITY.



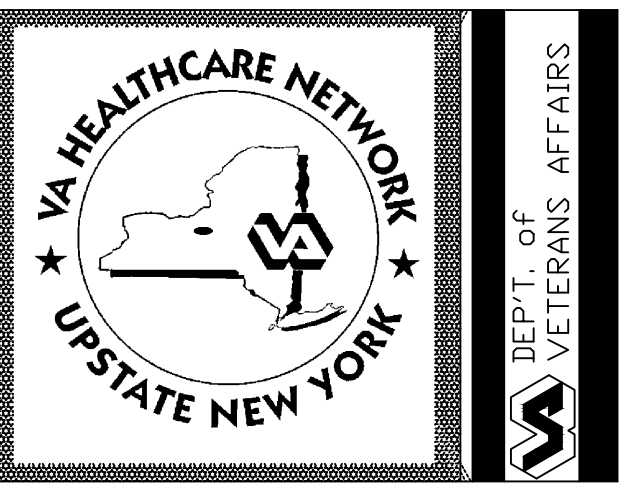
Revisions				Date

(Company Logo/Information Block)

Drawing Title
MAIN ENTRANCES DEMOLITION
Approved: Facility Manager

Project Title
INSTALL REVOLVING DOORS AT MAIN ENTRANCES
Building Number
1
Location
VAMC SYRACUSE, NY

Date
12/1/2014
Project No.
528A7-13-754
DRAWING NO.
AD-101
Dwg. 2 Of 8



1 2 3 4 5 6 7 8 9 10 11 12 13 14 15 16 17 18 19 20 21 22 23 24

GENERAL NOTES:

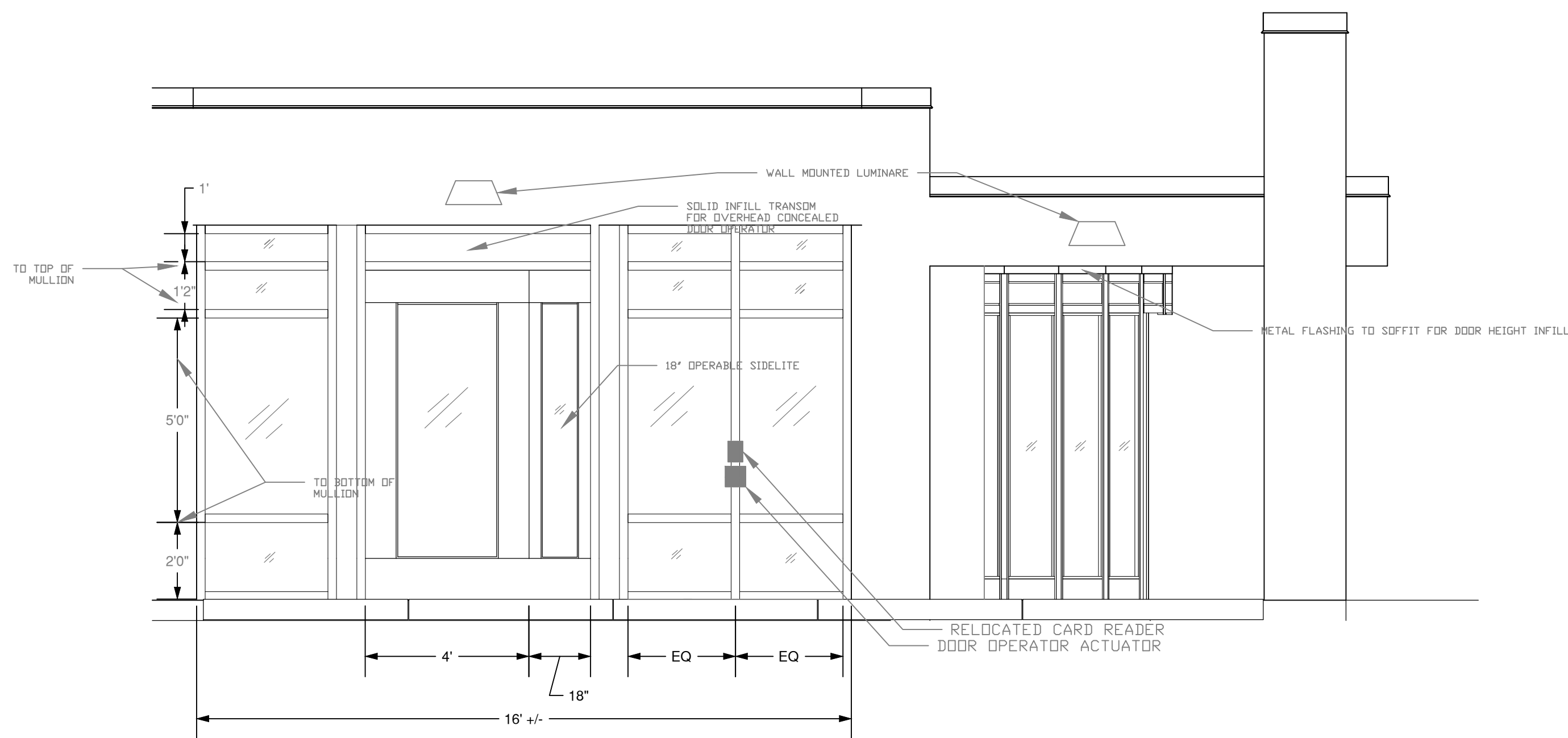
1. ALL NEW GLAZING AT UNIVERSITY PLACE IS TO BE INSULATING, TEMPERED TYPE, THIS INCLUDES ALL STOREFRONT GLAZING AS WELL AS GLASS FOR REVOLVING DOOR PANELS AND SWING DOORS

2. GLAZING OF REVOLVING DOOR DRUM AT IRVING AVE ENTRANCE WILL BE CURVED LAMINATED SAFETY TYPE. DOOR PANELS WILL BE AS STATED ABOVE FOR UNIVERSITY PLACE. ALL OTHER GLASS SHALL BE TEMPERED INSULATING TYPE.

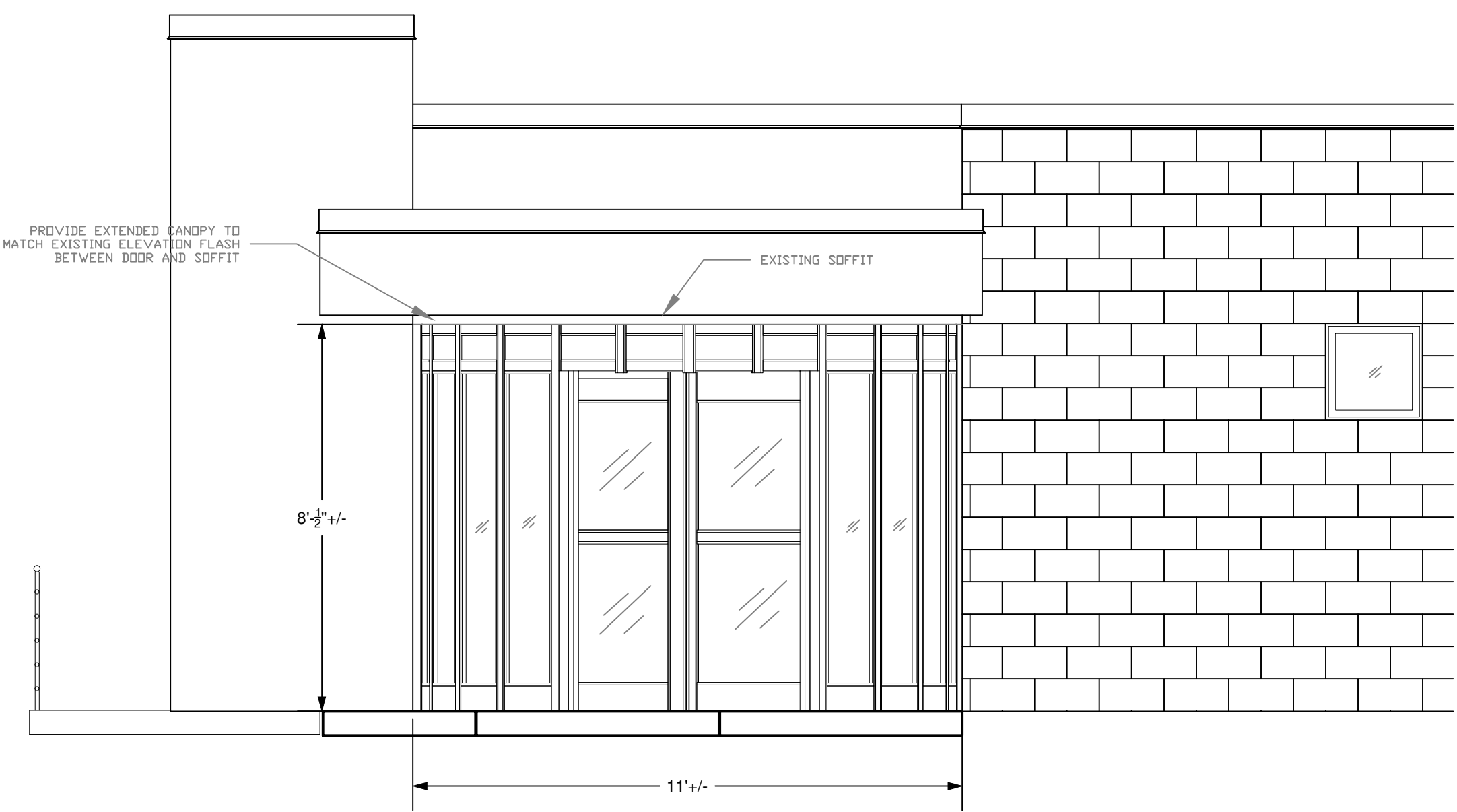
3. VERIFY ALL MEASUREMENTS PRIOR TO PURCHASE OR MANUFACTURE OF DIMENSIONALLY RESTRICTED ITEMS SUCH AS REVOLVING DOORS, STEEL FRAMING, GLAZING ETC.

KEYED NOTES:

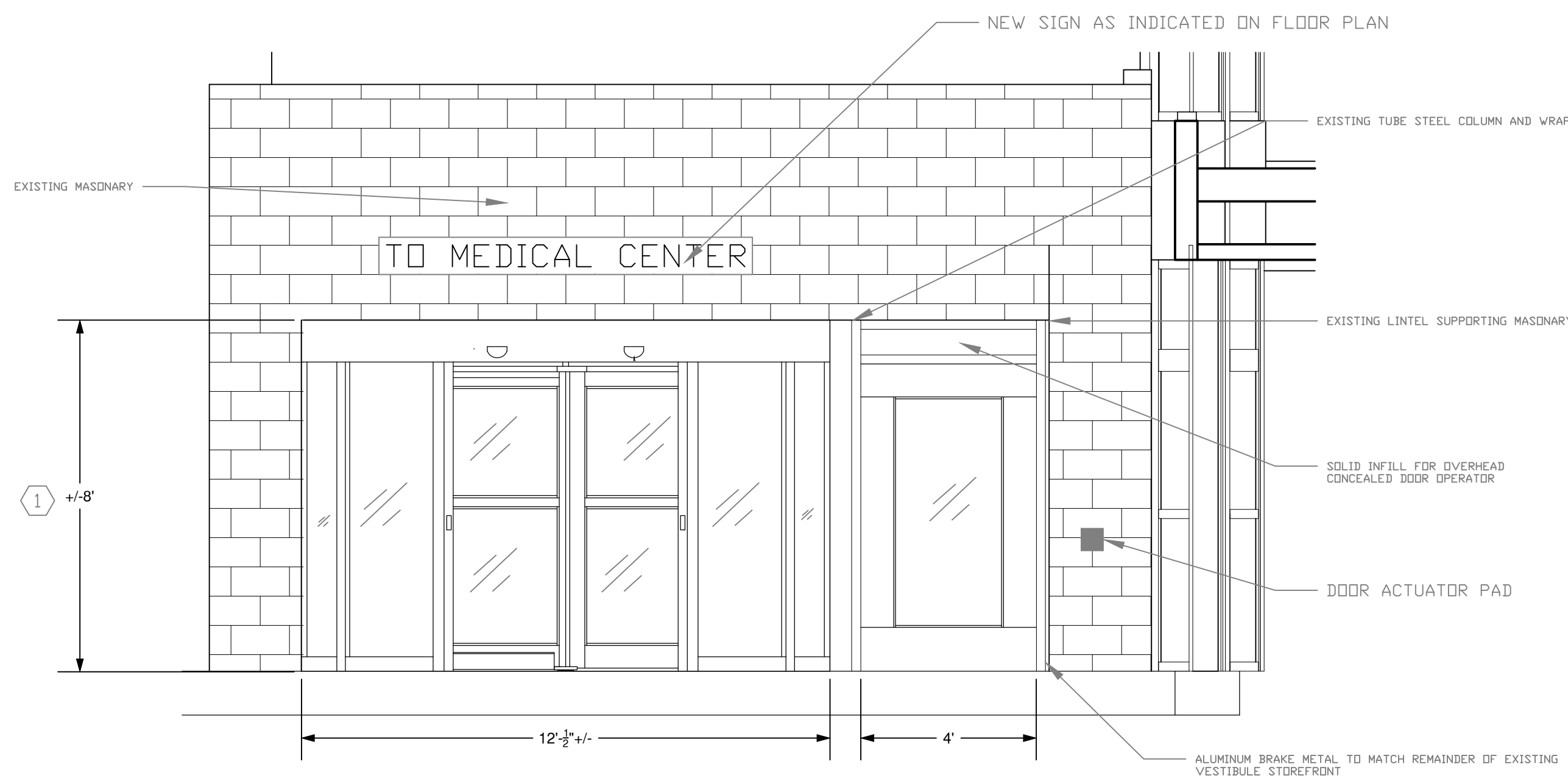
① DOOR HEIGHT RESTRICTED $\pm 1" < 8'0"$, CONTRACTOR SHALL PROVIDE AND INSTALL REVOLVING DOOR OF CUSTOM HEIGHT AS DICTATED BY FINISH OPENING AFTER ADJUSTMENTS TO FLOOR FINISHES. ANY ADJUSTMENTS MADE TO FLOORING SHALL NOT EXCEED SLOPE AS DICTATED BY ADA GUIDELINES OR CAUSE A DEPRESSION THAT CAN COLLECT WATER.



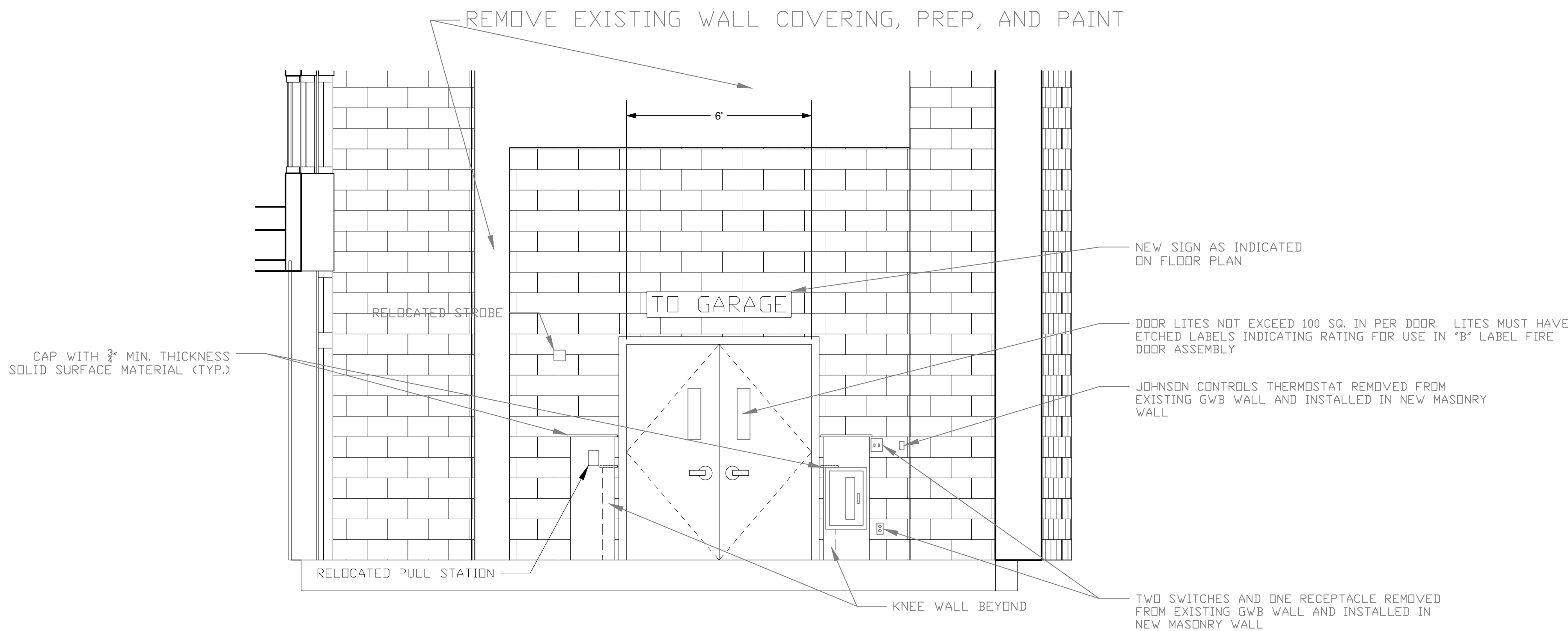
1 UNIVERSITY PLACE ENTRANCE — WEST
3/8" = 1'-0"



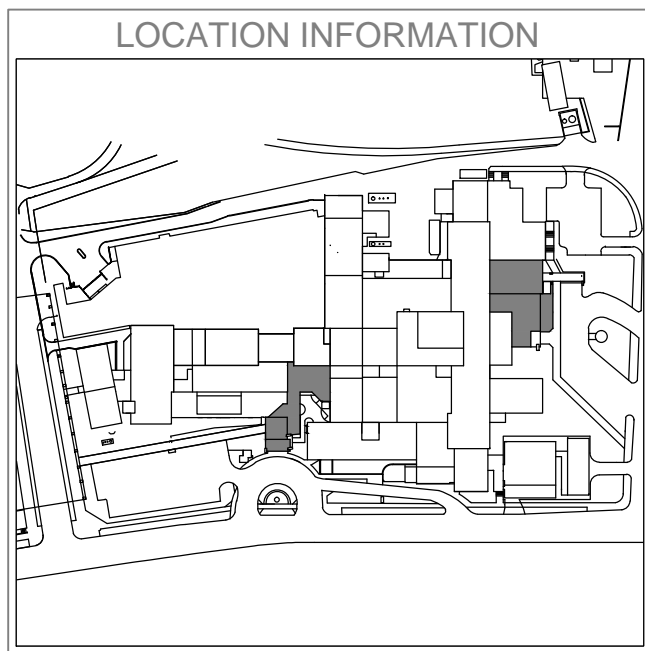
2 UNIVERSITY PLACE ENTRANCE — SOUTH
3/8" = 1'-0"



3 IRVING AVENUE ENTRANCE — NORTH
3/8" = 1'-0"



4 IRVING AVENUE ENTRANCE — SOUTH
3/8" = 1'-0"



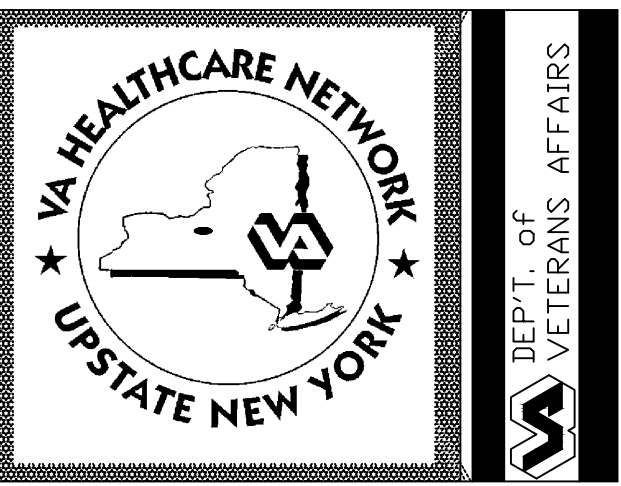
Revisions	Date

(Company Logo/Information Block)

Drawing Title
MAIN ENTRANCE ELEVATIONS
Approved: Facility Manager

Project Title
INSTALL REVOLVING DOORS AT MAIN ENTRANCES
Building Number
1
Location
VAMC SYRACUSE, NY

Date
12/1/2014
Project No.
528A7-13-754
Drawing No.
A-201
Dwg. 4 Of 8



1 2 3 4 5 6 7 8 9 10 11 12 13 14 15 16 17 18 19 20 21 22 23 24

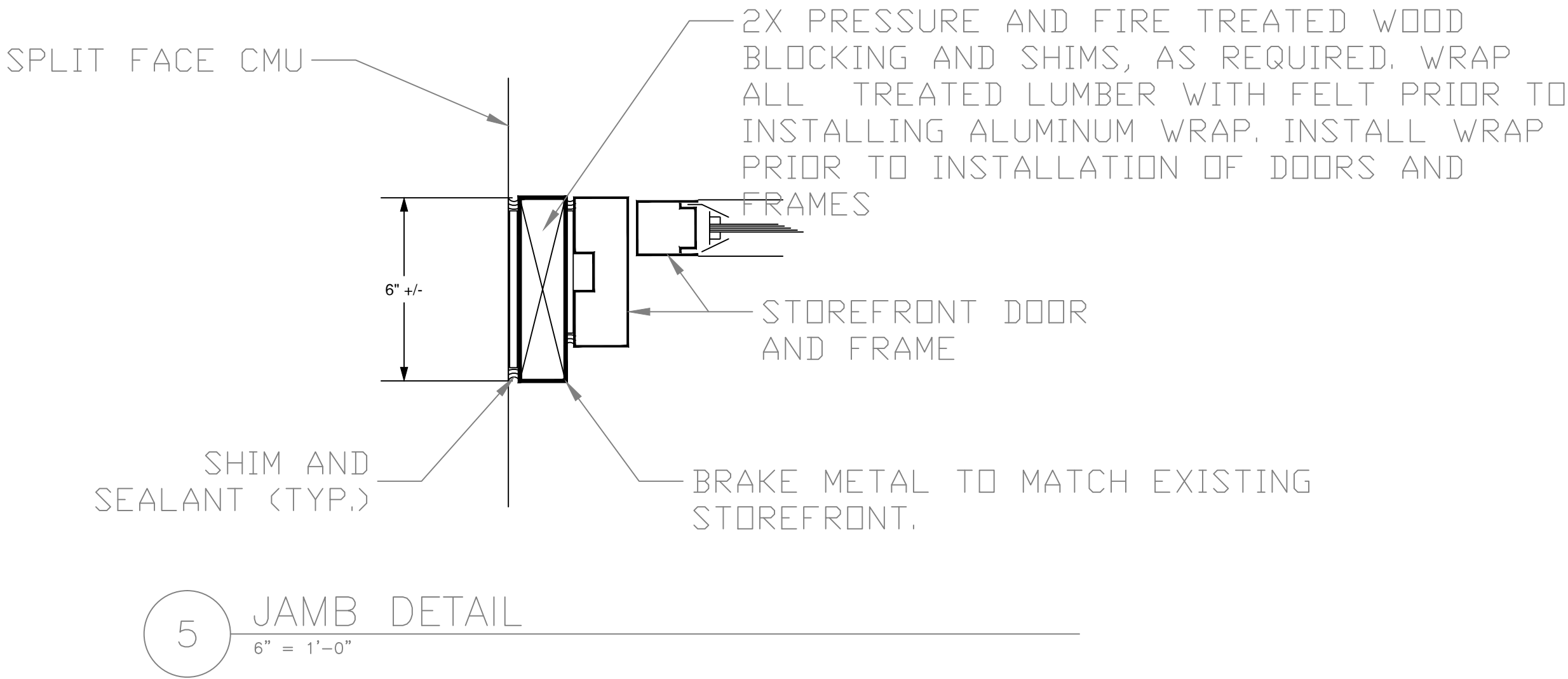
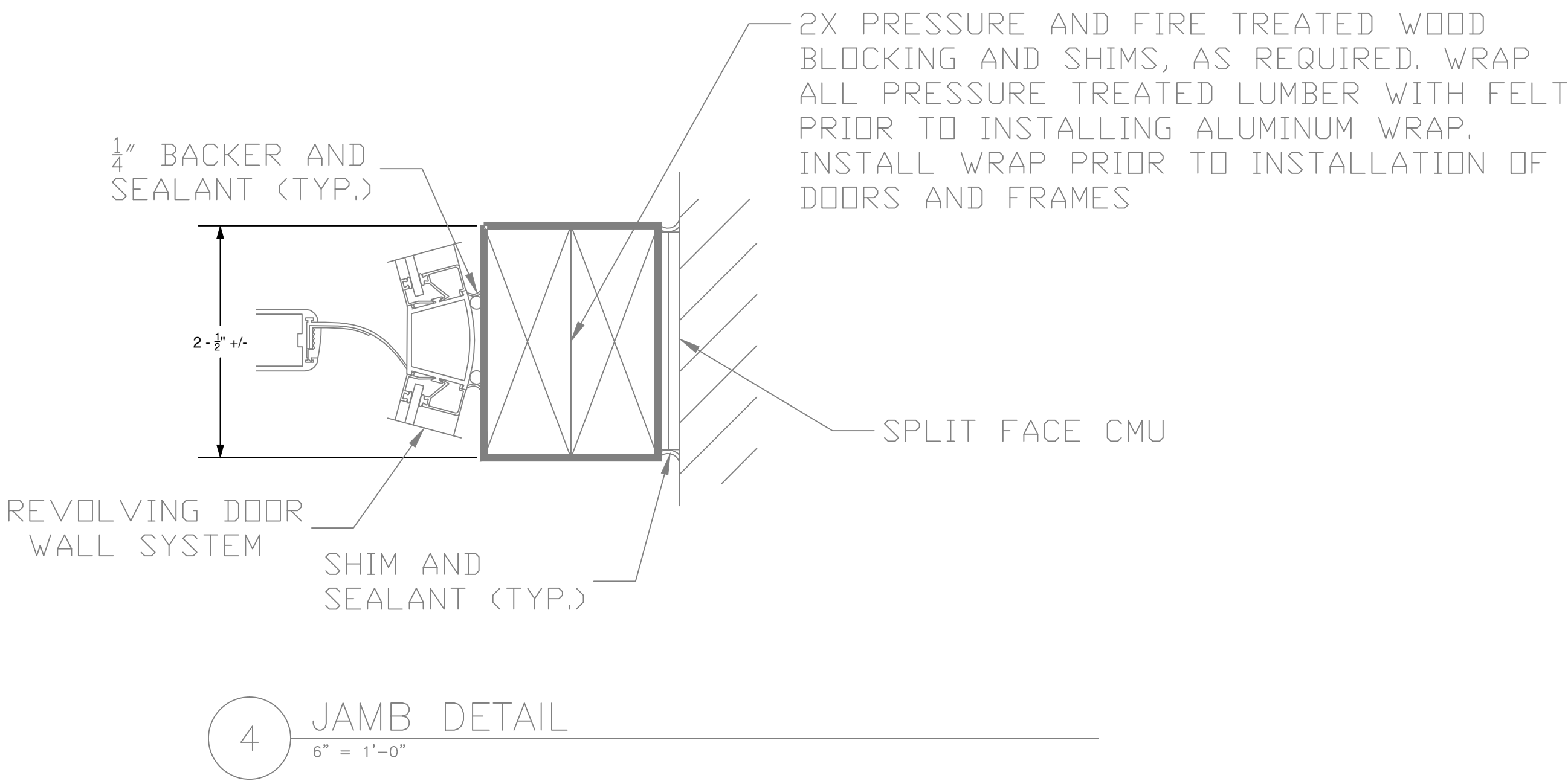
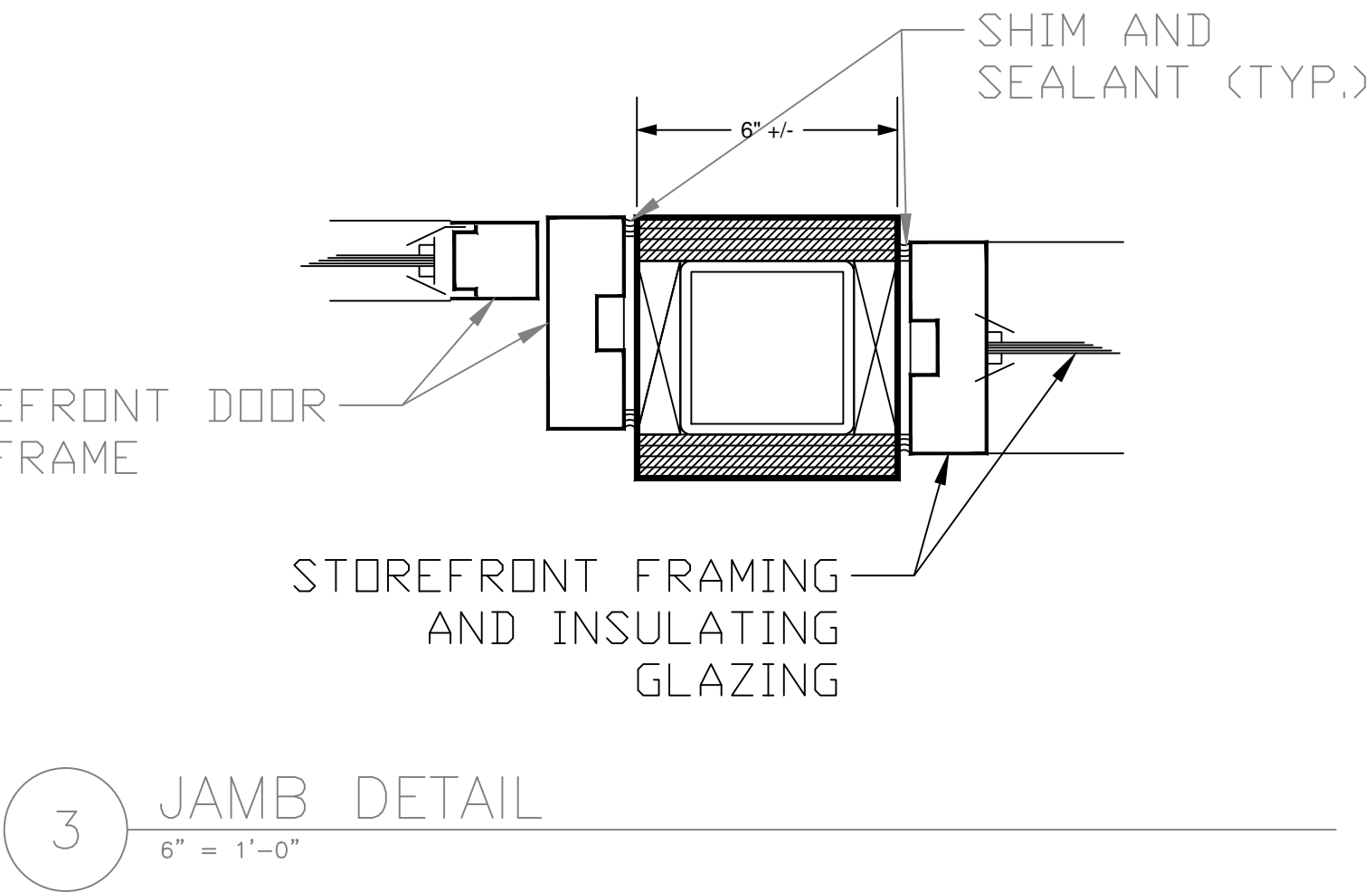
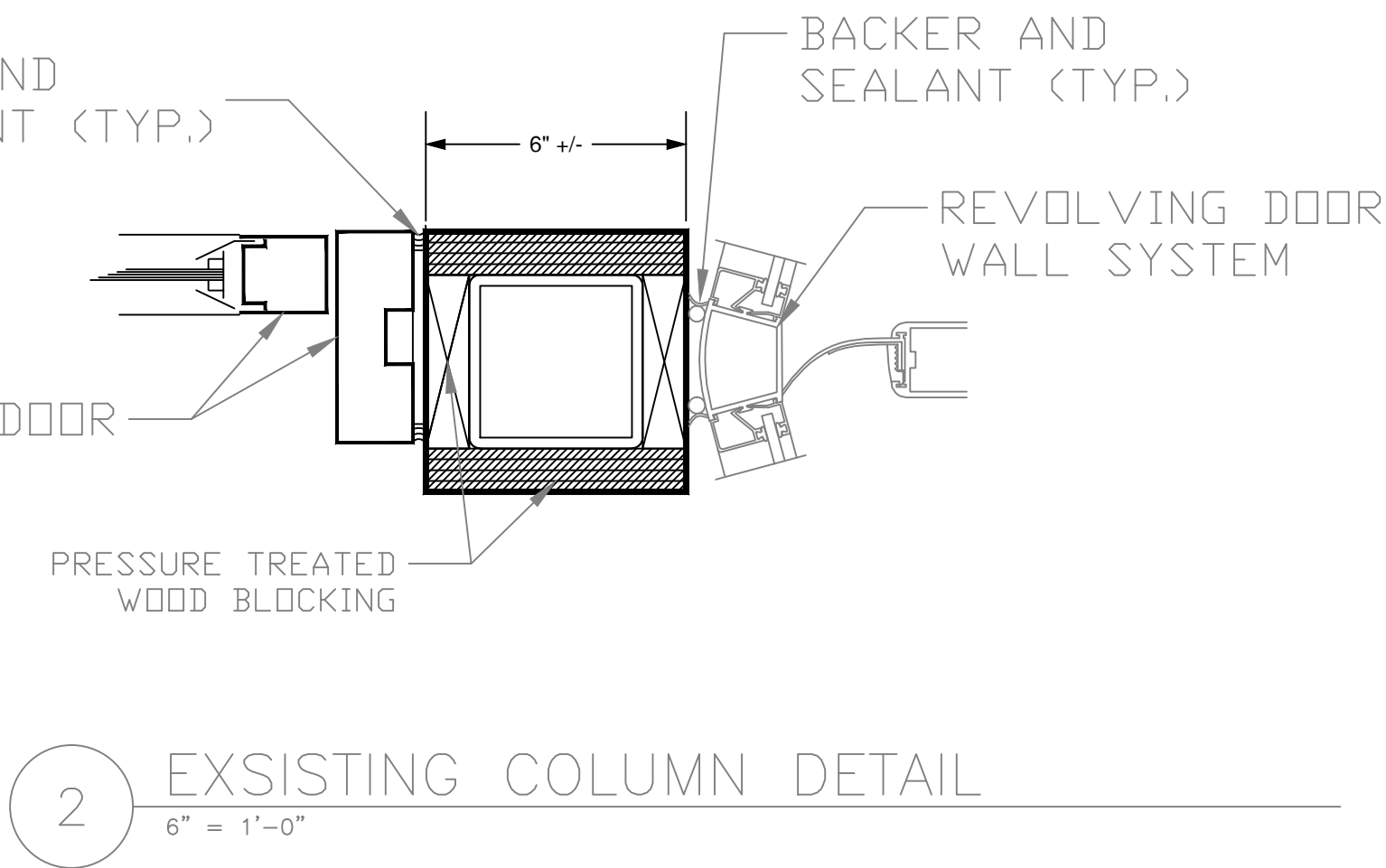
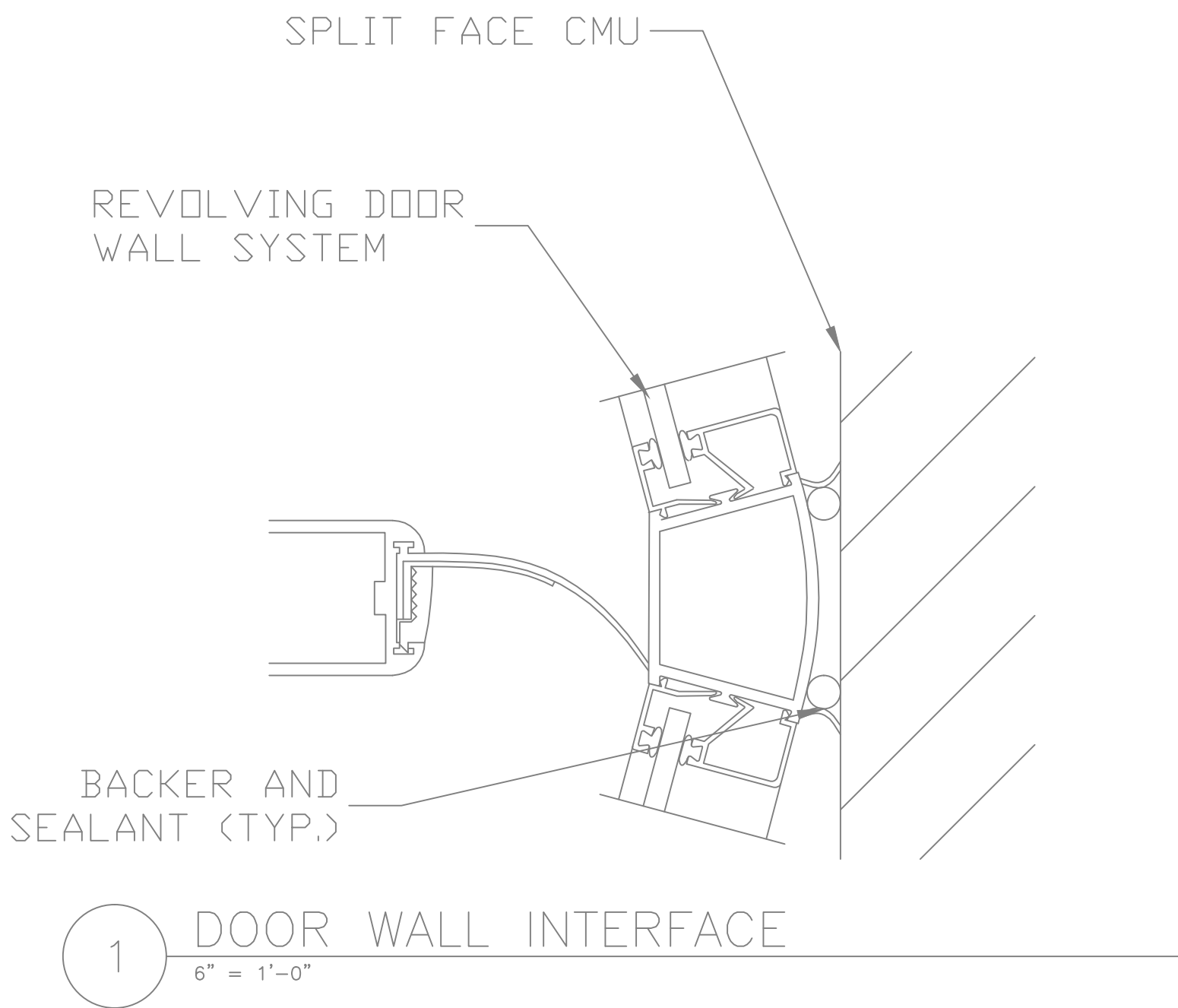
DOOR SCHEDULE

DOOR NO.	LOCATION		DOOR					FRAME				HWDR SET	FIRE LABEL	NOTES: (ALL DETAILS ARE FROM THIS SHEET, UNLESS NOTED OTHERWISE)
	FROM:	TO:	TYPE	MAT'L	HGT	WIDTH	THK	FINISH	MAT'L	HEAD	JAMB	FINISH		
C137A	VESTIBULE C136	CORRIDOR C137		ALUM	7'-0"	4'-0"	1 3/4"	--	ALUM	--	--	--	SEE TABLE	
C137B	VESTIBULE C136	CORRIDOR C137		ALUM	8'-0"	12'-0"	--	--	ALUM	--	--	--	PER SPEC.	
BG37A	EXTERIOR	OUTER VESTIBULE BG37		ALUM	8'-0"	11'-0"	--	--	ALUM	--	--	--	PER SPEC.	
BG37B	EXTERIOR	OUTER VESTIBULE BG37		ALUM	7'-0"	4'-0"	1 3/4"	--	ALUM	--	--	--	SEE TABLE	18" MANUALLY OPERABLE SIDE LITE TO BE INCLUDED AS INDICATED
C136A	GARAGE BRIDGE	VESTIBULE C136	PAIR	STL	7'-0"	6'-0"	1 3/4"	PNT.	STL	--	--	PNT.	SEE TABLE	SENSOR OPERATED SIDE HINGED DOOR PAIR W/ SURFACE MOUNT HWDR.
C136B	EXTERIOR	VESTIBULE C136		ALUM	9'	6'-6"	1 3/4"	PNT.	ALUM	--	--	PNT.	PER SPEC.	

DOOR HARDWARE

DOOR	REQUIRED HARDWARE AND ACCESSORIES
C137A	CONCEALED OPERATOR AND PRESENCE SENSOR, HANDICAP PAD ACTUATORS, POWER SUPPLY AND CONTROLLER, ELECTRIC EXIT DEVICES, FLOOR STOP, SELF ADHESIVE SEAL, CONTINUOUS TRANSFER HINGE, SURFACE MOUNTED HARDWARE, SELF ADHESIVE SEALS
BG37B	CONCEALED OPERATOR AND PRESENCE SENSOR, HANDICAP PAD ACTUATORS, POWER SUPPLY AND CONTROLLER INTEGRATED WITH BUILDING ACCESS CONTROLS AND FIRE ALARM SYSTEM, ELECTRIC EXIT DEVICE, MAGNETIC DOOR LOCK, FLOOR STOP, SELF ADHESIVE SEAL, CONTINUOUS TRANSFER HINGE, SURFACE MOUNTED, STOREROOM FUNCTION HARDWARE, SELF ADHESIVE SEALS, REX DEVICE. PROVIDE MANUAL FLUSH BOLTS FOR OPERABLE LEAF.
C136A	STEEL FIRE RATED FRAME, HEAVY DUTY OPERATOR AND PRESENCE SENSORS, HANDICAP PAD ACTUATORS, POWER SUPPLY AND CONTROLLER INTEGRATED WITH FIRE ALARM SYSTEM, ELECTRIC EXIT DEVICES, FLOOR STOP, SELF ADHESIVE SEAL, CONTINUOUS TRANSFER HINGE, FIRE RATED SURFACE MOUNTED EXIT HARDWARE, ELECTRIC LATCH SOLENOID WITH MAGNETICALLY HELD DOGGING, SELF ADHESIVE SEALS, STAINLESS STEEL KICK PLATES.

ALL HARDWARE LISTED ABOVE IS IN ADDITION TO ANY ITEMS REQUIRED BY THE SPECIFICATIONS AND IN SOME CASES MAY COINCIDE. ALL WORK TO BE INCLUDED FOR INSTALLATION OF HARDWARE AND ACCESSORIES LISTED IN SPECS AND TABLE ABOVE INCLUDING WIRING, CONDUIT, ETC.



Revisions	Date

(Company Logo/Information Block)

Drawing Title ARCHITECTURAL DETAILS AND DOOR SCHEDULE	Project Title INSTALL REVOLVING DOORS AT MAIN ENTRANCES	Date 12/1/2014
Approved: Facility Manager	Building Number 1	Checked MA
	Location VAMC SYRACUSE, NY	Drawn AWG

Project No. 528A7-13-754	DRAWING NO. A-501
Dwg. 5 Of 8	

LUMINAIRE SCHEDULE									
TYPE	QUANTITY	DESCRIPTION	WATTAGE	LUMENS	LAMPS	BALLAST	DISTRIBUTION CLASSIFICATION	BASIS OF DESIGN	NOTES
A	2	51W L.E.D. WALL MOUNT LUMINAIRE	27	2177	(1) 21 LED BARS	L.E.D DRIVER	BL2	MCGRAW-EDISON 1ST-B01-LED-E1-BL2-DP-P	1,2
NOTES: 1. PROVIDE INTEGRAL BUTTON TYPE PHOTO-CELL FOR LIGHT CONTROL 2. "EQUAL" FIXTURES MAY BE PROVIDED IF THEY MEET OR EXCEED THE LIGHT OUTPUT PER WATT, ARE APPROPRIATE FOR THE LOCATION, AND MEET RELATED SPECIFICATIONS AND LIGHT DISTRIBUTION PATTERNS.									

GENERAL NOTES:

- IN ADDITION TO THE REVOLVING DOOR OPERATOR, WIRE AND ENSURE OPERATION OF INTERIOR CEILING MOUNTED RECESSED LIGHTS INSTALLED IN REVOLVING DOOR
- ALL WIRING FOR BRANCH CIRCUIT WILL BE RUN IN CONDUIT TO DESIGNATED ELECTRICAL PANEL AS PER SPECIFICATION AND NEC.
- COORDINATE ELECTRICAL WORK AND PANEL SHUTDOWNS WITH COR AT LEAST 72 HOURS IN ADVANCE
- LABEL DOOR OPERATORS WITH ADHESIVE PRINTED LABEL INDICATING PANEL AND CIRCUIT NUMBER USED FOR POWER FEED.
- PROVIDE UPDATED PANEL SCHEDULES INDICATING ANY CHANGES MADE OVER THE COURSE OF INSTALLATION.
- SEE DRAWING AD-101 FOR ADDITIONAL NOTES ON AND LOCATIONS OF EXISTING EQUIPMENT TO BE REMOVED

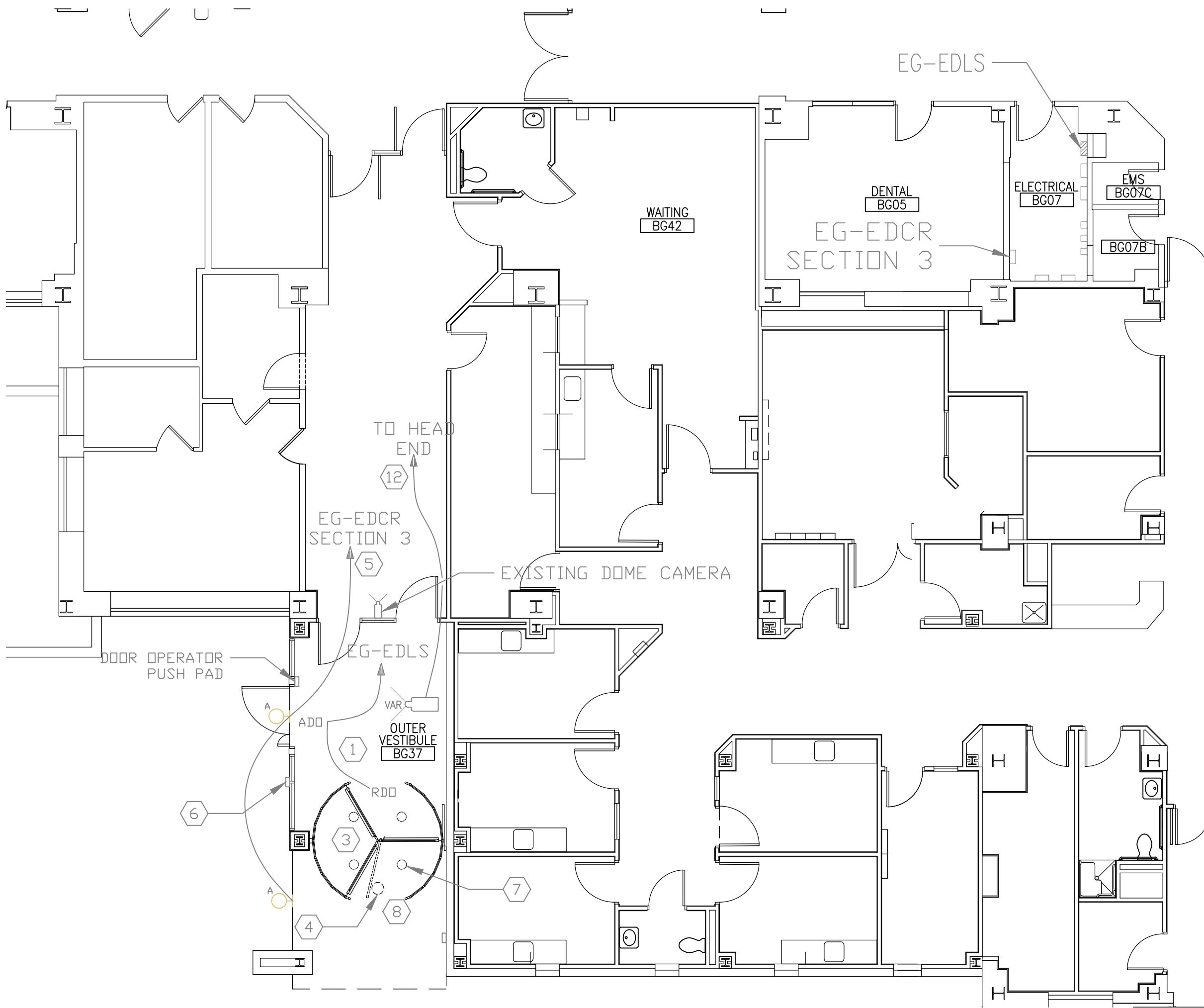
- EXISTING EQUIPMENT, SUCH AS LIGHTING FIXTURES, WIRING DEVICES, CONDUITS, ETC., SHOWN ON PLANS TO BE REMOVED COMPLETELY. CUT/CAP CONDUITS AT THE AREA OF WORK PERIMETER AND REMOVE CONDUIT WITHIN THE WORK AREA. DISCONNECT WIRING AT THE OVERCURRENT PROTECTIVE DEVICE AND REMOVE WIRING COMPLETELY FROM THE ABANDONED CONDUITS.
- REMOVE ALL ACCESSIBLE ABANDONED WIRING OF ALL TYPES, OR CAP AND LABEL IN JUNCTION BOX FOR RE-USE, IN COMPLIANCE WITH THE NATIONAL ELECTRIC CODE.
- MAINTAIN AND RESTORE, IF INTERRUPTED, ALL CONDUITS AND CONDUCTORS PASSING THROUGH RENOVATED AREAS AND SERVICING UNDISTURBED AREAS.
- NEW DOOR OPERATORS AT THE UNIVERSITY PLACE ENTRANCE, BOTH SWING AND REVOLVING, SHALL HAVE THE ABILITY TO BE REMOTELY CONTROLLED BY THE BUILDING COMMANDER SYSTEM. CONTRACTOR WILL BE RESPONSIBLE FOR WIRING, PROGRAMMING, AND ANY ADDITIONAL CARD READERS NECESSARY TO ENSURE THIS FUNCTIONALITY.

KEYED NOTES:

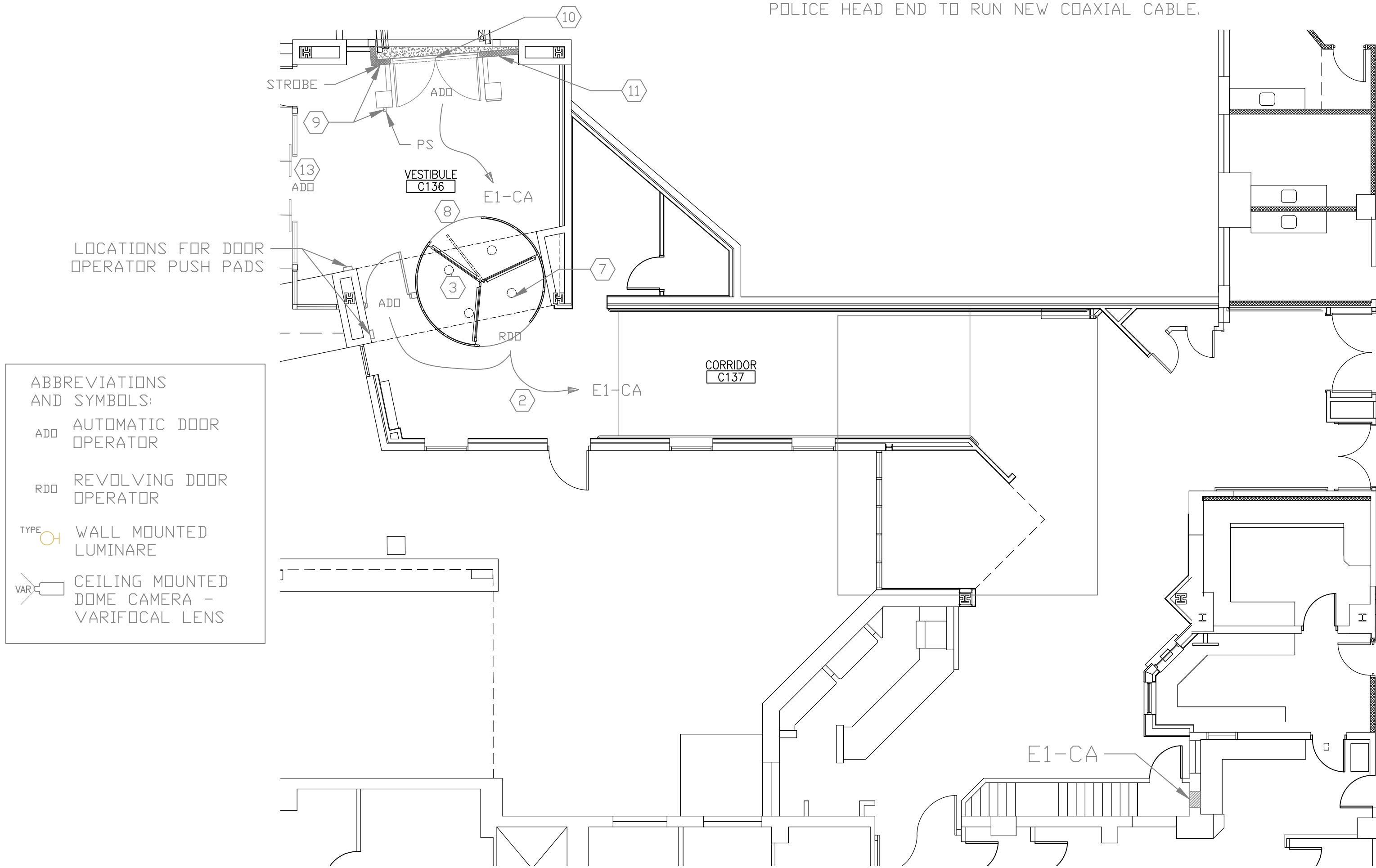
- PROVIDE 20 AMP, 120 VOLT BRANCH CIRCUITS FOR AUTOMATIC SWING AND REVOLVING DOOR OPERATORS FROM PANEL EG-EDLS, DEMO EXISTING CIRCUIT
- PROVIDE 20 AMP, 120 VOLT BRANCH CIRCUITS FOR AUTOMATIC SWING AND REVOLVING DOOR OPERATORS FROM PANEL ELSIA-A, DEMO EXISTING CIRCUIT
- DEMO ANY UNUSED EXISTING CONDUIT AND WIRING BACK TO ELECTRICAL PANELS AS PER SPECIFICATIONS.
- REMOVE EXISTING RECESSED LIGHT FIXTURE, PROVIDE INFILL FOR LIGHT LOCATION
- PROVIDE 20 AMP, 120 VOLT BRANCH CIRCUIT FOR EXTERIOR WALL MOUNTED LIGHTS FROM PANEL EG-EDCR SECTION 3
- LOCATION FOR RELOCATED CARD READER AND NEW DOOR ACTUATOR PAD. READER AND ACTUATOR ARE TO BE CONNECTED INTO BUILDING CONTROL SYSTEM AND PROGRAMMED AS PER VA POLICE GUIDANCE
- RECESSED LIGHTS INSTALLED AS PART OF DOOR PACKAGE TO BE WIRED AS PER MANUFACTURERS SPECIFICATIONS BY CONTRACTOR

- PROVIDE INTEGRATED DRUM BRAKE FOR REVOLVING DOORS TO DISABLE MANUAL/AUTOMATIC OPERATION. DRUM BRAKE OPERATION SHALL BE COORDINATED VIA BUILDING CONTROL SYSTEM TO ALLOW REMOTE LOCK OUT OF DOORS BY VA POLICE
- RELOCATE EXISTING PULL STATION AND STROBE FROM DEMOLISHED GWB WALL TO LOCATIONS INDICATED
- REMOVE EXISTING OVER DOOR HEATER, REINSTALL HEATER IN SAME LOCATION AFTER THE COMPLETION OF CONSTRUCTION OF NEW MASONRY WALL
- REINSTALL TWO SWITCHES AND RECEPTACLE THAT WERE PREVIOUSLY REMOVED. RECONNECT AT NEAREST JUNCTION.
- CONTRACTOR SHALL PROVIDE AND INSTALL CAMERA IN LOCATION SHOWN, AS WELL AS THE ASSOCIATED COAXIAL CABLE RUN TO POLICE HEAD END EQUIPMENT, REQUIRED TERMINATIONS, AND ACTIVATION. POWER SHALL BE PROVIDED FROM POWER SUPPLY LOCATED IN BG07. CONTRACTOR SHALL UTILIZE EXISTING DEDICATED COAXIAL CONDUIT RUN STARTING IN BG07 AND TERMINATING IN THE POLICE HEAD END TO RUN NEW COAXIAL CABLE.

- REUSE EXISTING CIRCUIT TO POWER NEW AUTOMATIC DOOR OPERATOR. RECONNECT AND MODIFY AS NECESSARY.

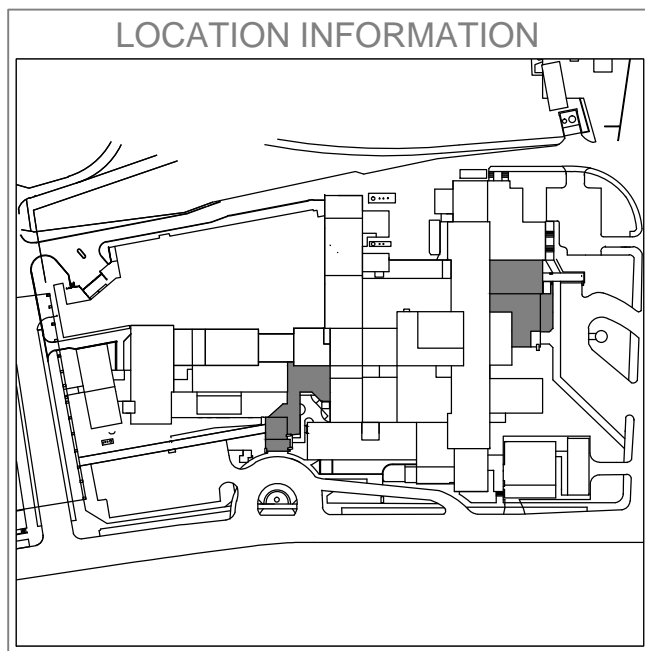


1 GROUND FLOOR ENTRANCE ELECTRICAL
1/8" = 1'-0"



ABBREVIATIONS AND SYMBOLS:	
ADD	AUTOMATIC DOOR OPERATOR
RDD	REVOLVING DOOR OPERATOR
TYPE	WALL MOUNTED LUMINAIRE
VAR	CEILING MOUNTED DOME CAMERA - VARIFOCAL LENS

2 FIRST FLOOR ENTRANCE ELECTRICAL
1/8" = 1'-0"



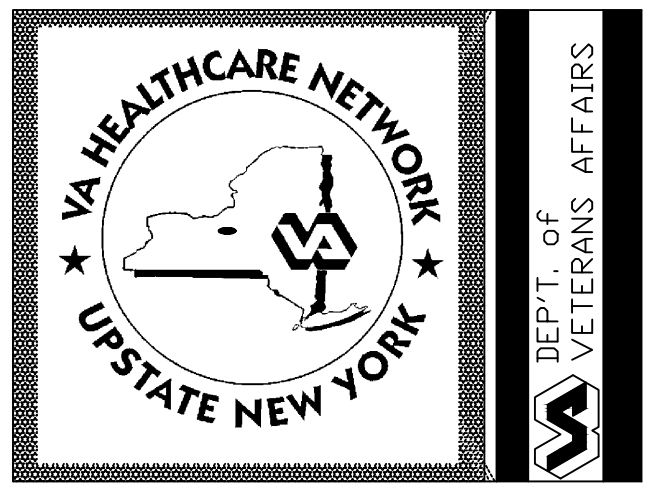
Revisions	Date

(Company Logo/Information Block)

Drawing Title
MAIN ENTRANCES ELECTRICAL
Approved: Facility Manager

Project Title
INSTALL REVOLVING DOORS AT MAIN ENTRANCES
Building Number 1
Location VAMC SYRACUSE, NY
Checked MA
Drawn AWG

Date 12/1/2014
Project No. 528A7-13-754
DRAWING NO. E-101
Dwg. 6 Of 8



1 2 3 4 5 6 7 8 9 10 11 12 13 14 15 16 17 18 19 20 21 22 23 24

A

B

C

D

E

F

G

H

J

K

L

M

N

P

Q

R

R

1

2

3

4

5

6

7

8

9

10

11

12

13

14

15

16

17

18

19

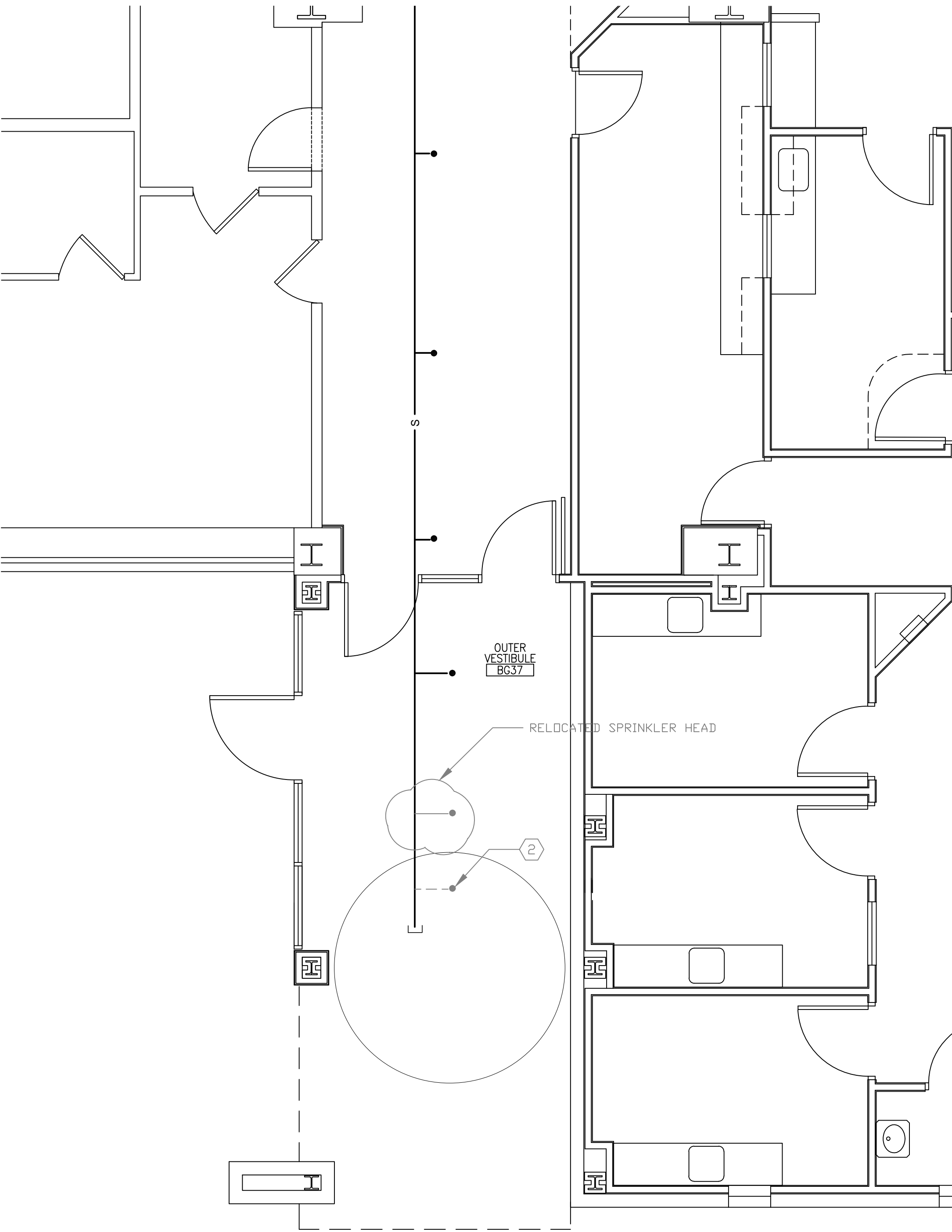
20

21

22

23

24



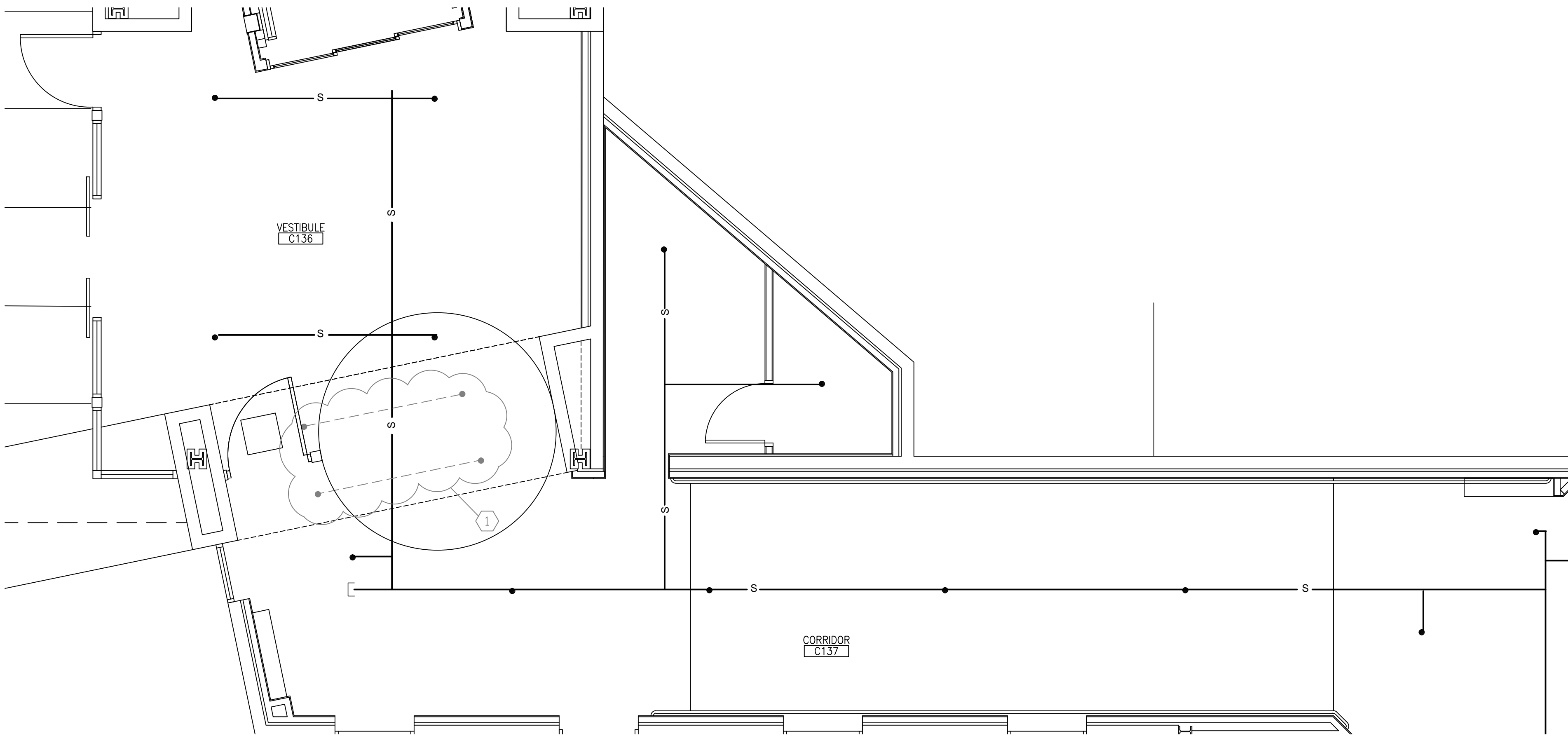
1 NEW UNIVERSITY PLACE ENTRANCE – FIRE PROTECTION
1/4" = 1'-0"

GENERAL NOTES:

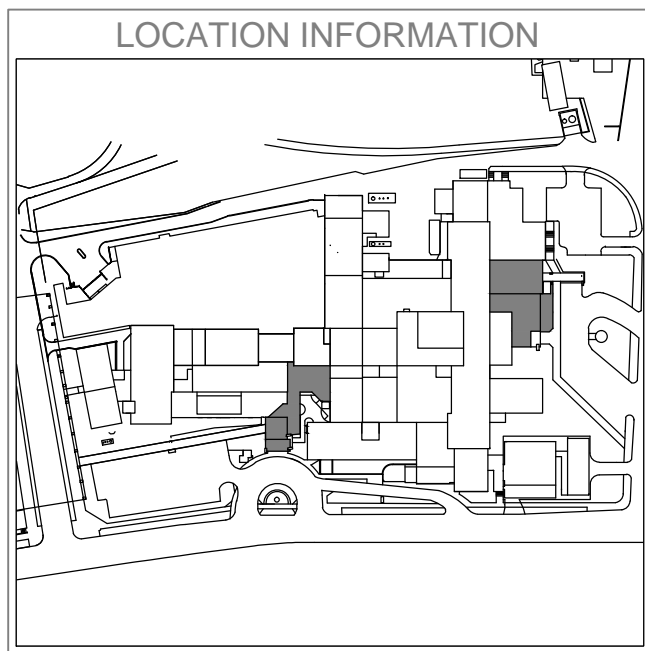
1. SHUTDOWN TIME OF SPRINKLER SYSTEMS WILL BE LIMITED TO THE SECTIONS BEING WORK ON, AND WILL BE ORGANIZED AT LEAST 48 HOURS IN ADVANCE WITH THE CDR
2. REPAIR SURFACES AND FINISHED TO MATCH SURROUNDING INCLUDING BUT NOT LIMITED TO PATCHING AND PAINTING OF ANY HOLES THAT REMAIN AFTER DEMOLITION OF SPRINKLER HEADS, INCLUDING THE REPLACEMENT OF SPRINKLER HEADS.

KEYED NOTES:

- 1 REMOVE FOUR EXISTING GLASS WETTING SPRINKLER HEADS UNDER SOFFIT, REMOVE BRANCH LINES SERVICING REMOVED SPRINKLER HEADS
- 2 REMOVE EXISTING SPRINKLER HEAD, RELOCATE ON SAME SPRINKLER LINE AS NOTED, SPRINKLER HEAD TYPE AND LINE DIAMETER TO MATCH EXISTING



2 NEW IRVING AVENUE ENTRANCE – FIRE PROTECTION
1/4" = 1'-0"



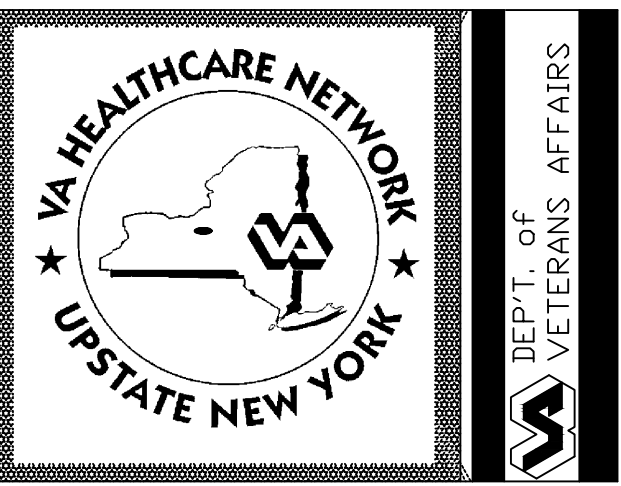
Revisions	Date

(Company Logo/Information Block)

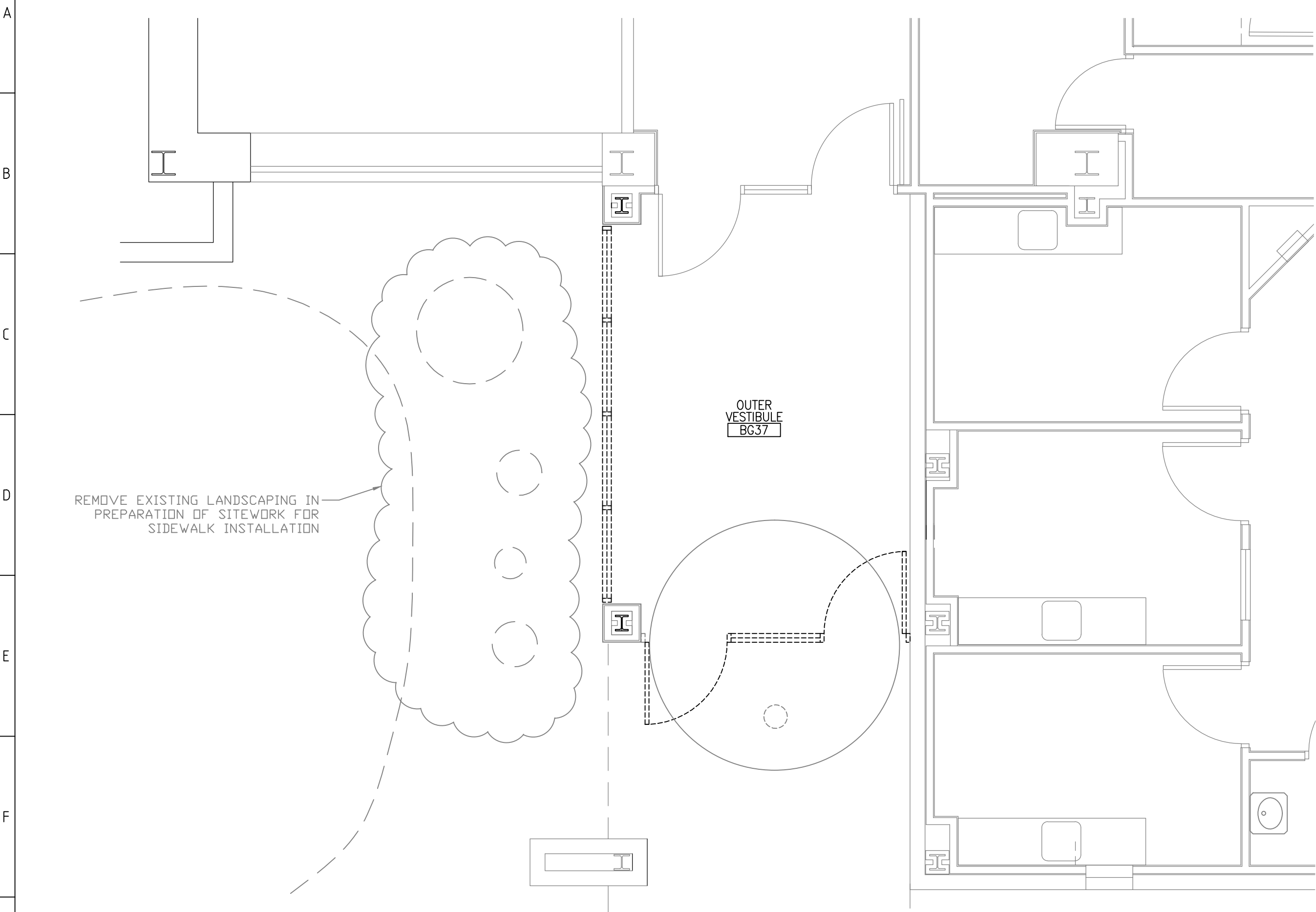
Drawing Title
MAIN ENTRANCE FIRE PROTECTION
Approved: Facility Manager

Project Title
INSTALL REVOLVING DOORS AT MAIN ENTRANCES
Building Number
1
Checked
MA
Drawn
AWG
Location
VAMC SYRACUSE, NY

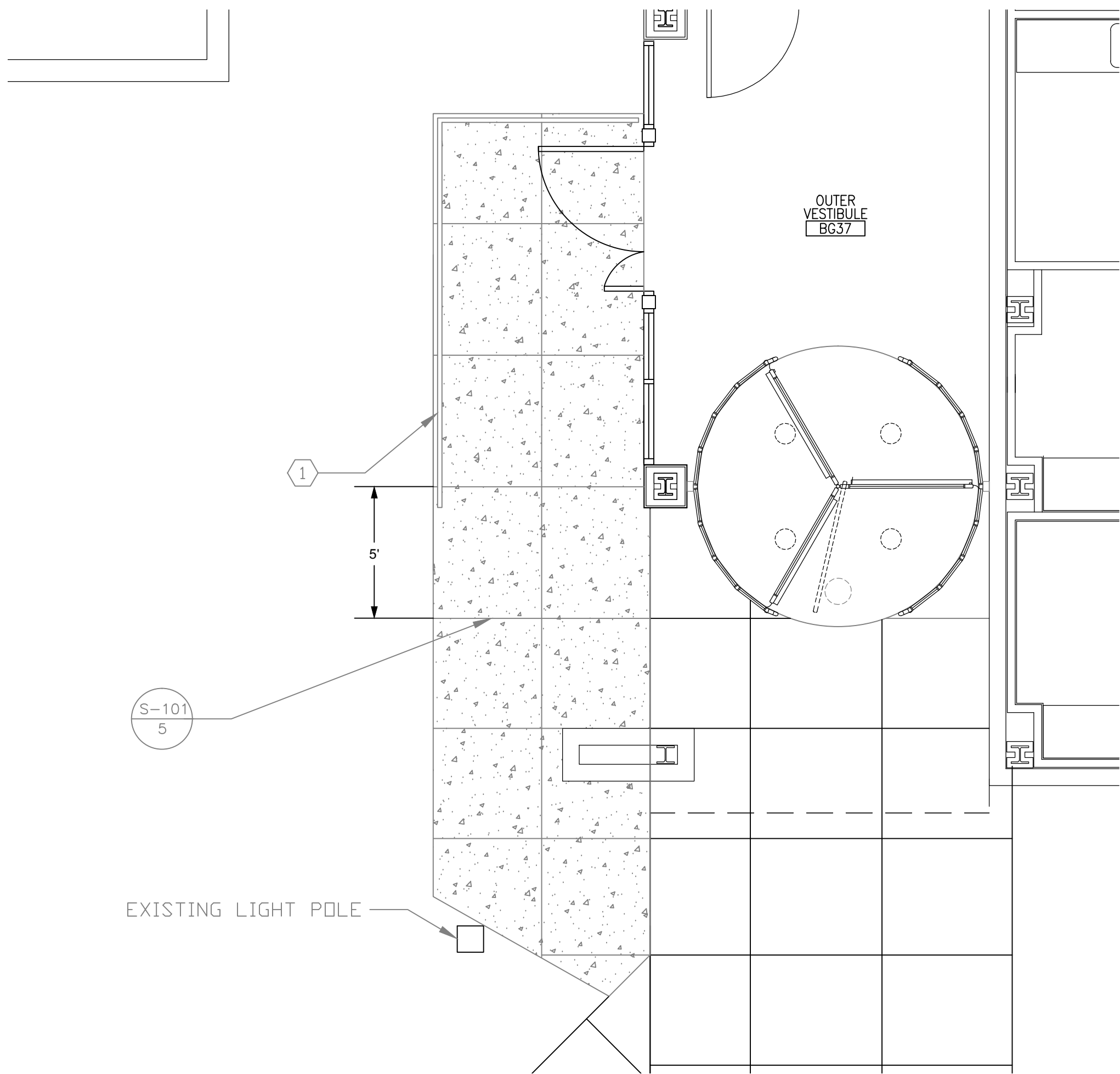
Date
12/1/2014
Project No.
528A7-13-754
DRAWING NO.
FP-101
Dwg. 7 Of 8



1 2 3 4 5 6 7 8 9 10 11 12 13 14 15 16 17 18 19 20 21 22 23 24



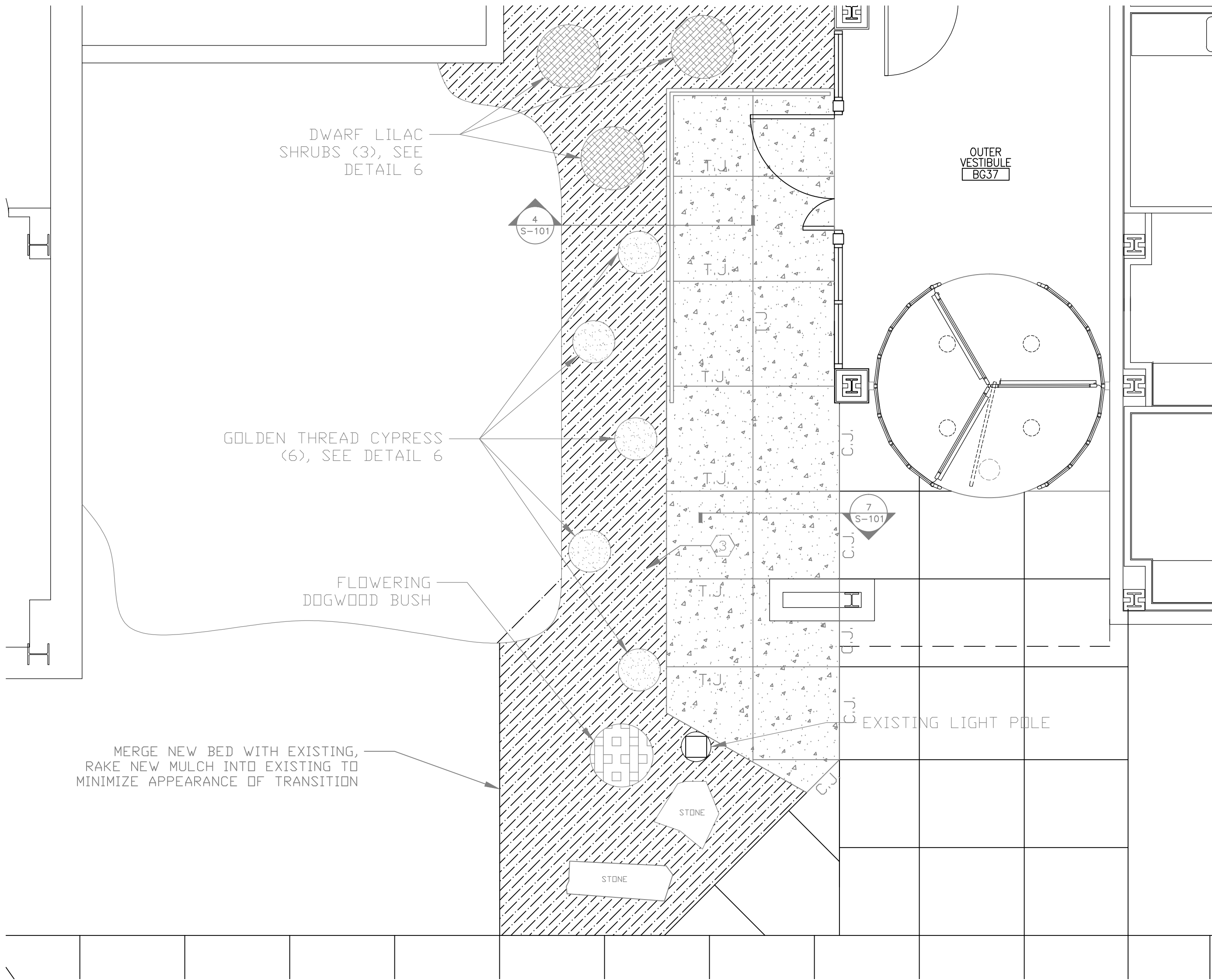
1 EXSISTING SITE REMOVAL
1/4" = 1'-0"



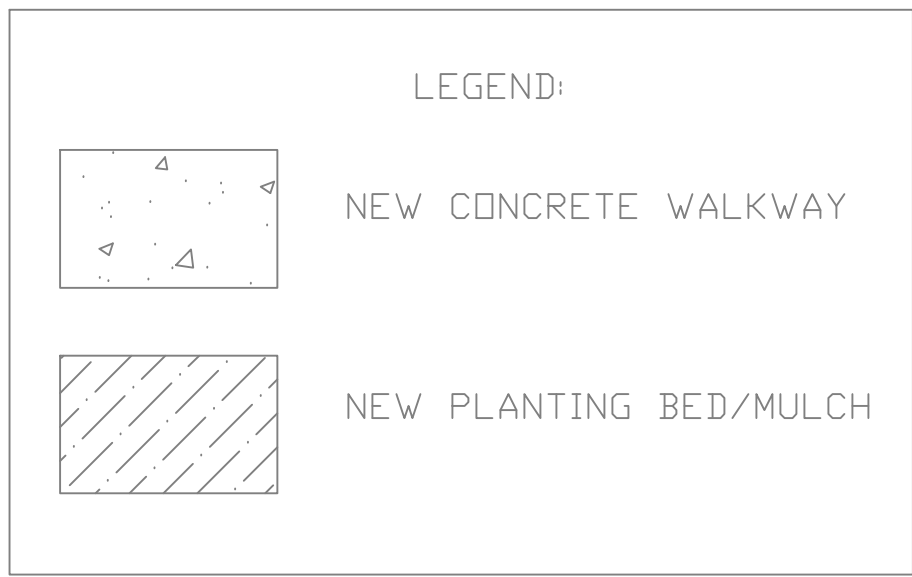
2 NEW SITE INSTALLATION – SIDEWALK AND RAILING
1/4" = 1'-0"

GENERAL NOTES:

1. ANY SITE IMPROVEMENTS THAT ARE DISTURBED OR ALTERED DURING CONSTRUCTION SHALL BE RESTORED TO SAME OR BETTER CONDITION THAN PRIOR TO THE COMMENCEMENT OF CONSTRUCTION
2. CONTRACTOR SHALL BE RESPONSIBLE FOR THE REMOVAL OF MATERIAL AND EARTH TO SUFFICIENT DEPTH SO AS TO ENABLE THE INSTALLATION OF PROPER FILL AND SUB-BASE FOR ALL SITE IMPROVEMENTS
3. CONTRACTOR IS RESPONSIBLE FOR ALL NECESSARY SHORING AND STABILIZATION NECESSARY TO ENSURE REMAINING STRUCTURE IS UNDAMAGED AND UNDISTURBED THROUGH TO COMPLETION OF WORK
4. PLANTING OF SHRUBS AND BUSHES WILL BE COMPLETED AS PER THE SPECIFICATIONS AND DETAILS LISTED BELOW
5. SITE WORK IS TO BE COORDINATED PRIOR TO STARTING WITH COR TO MINIMIZE THE EFFECT OF WORK ON THE MEDICAL CENTER AND CONCURRENT CONSTRUCTION PROJECTS

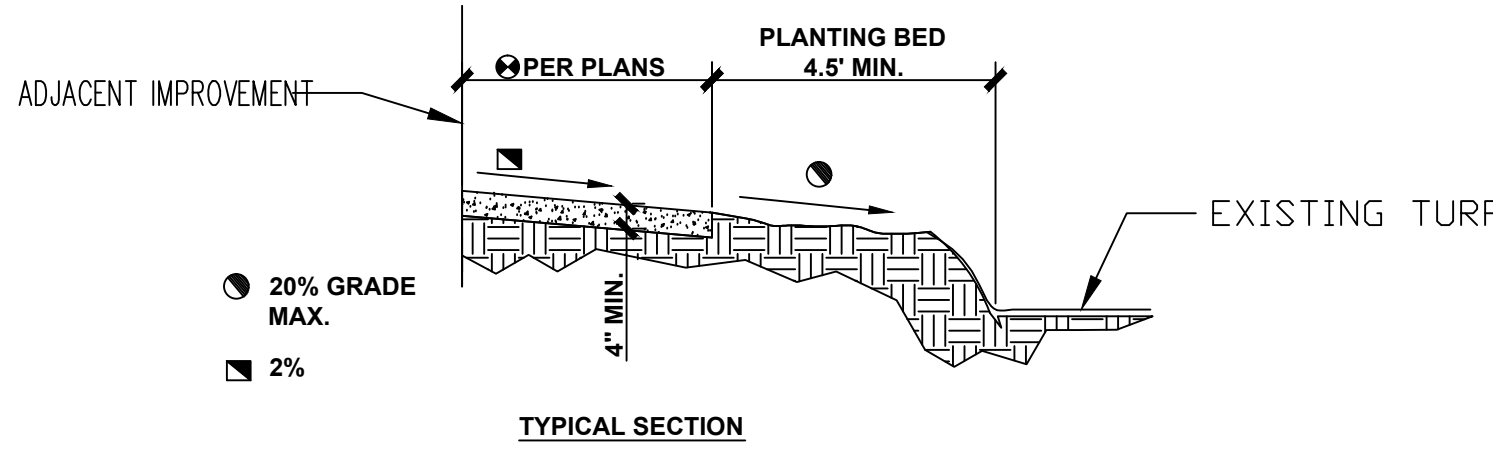


3 NEW SITE INSTALLATION – LANDSCAPING
1/4" = 1'-0"

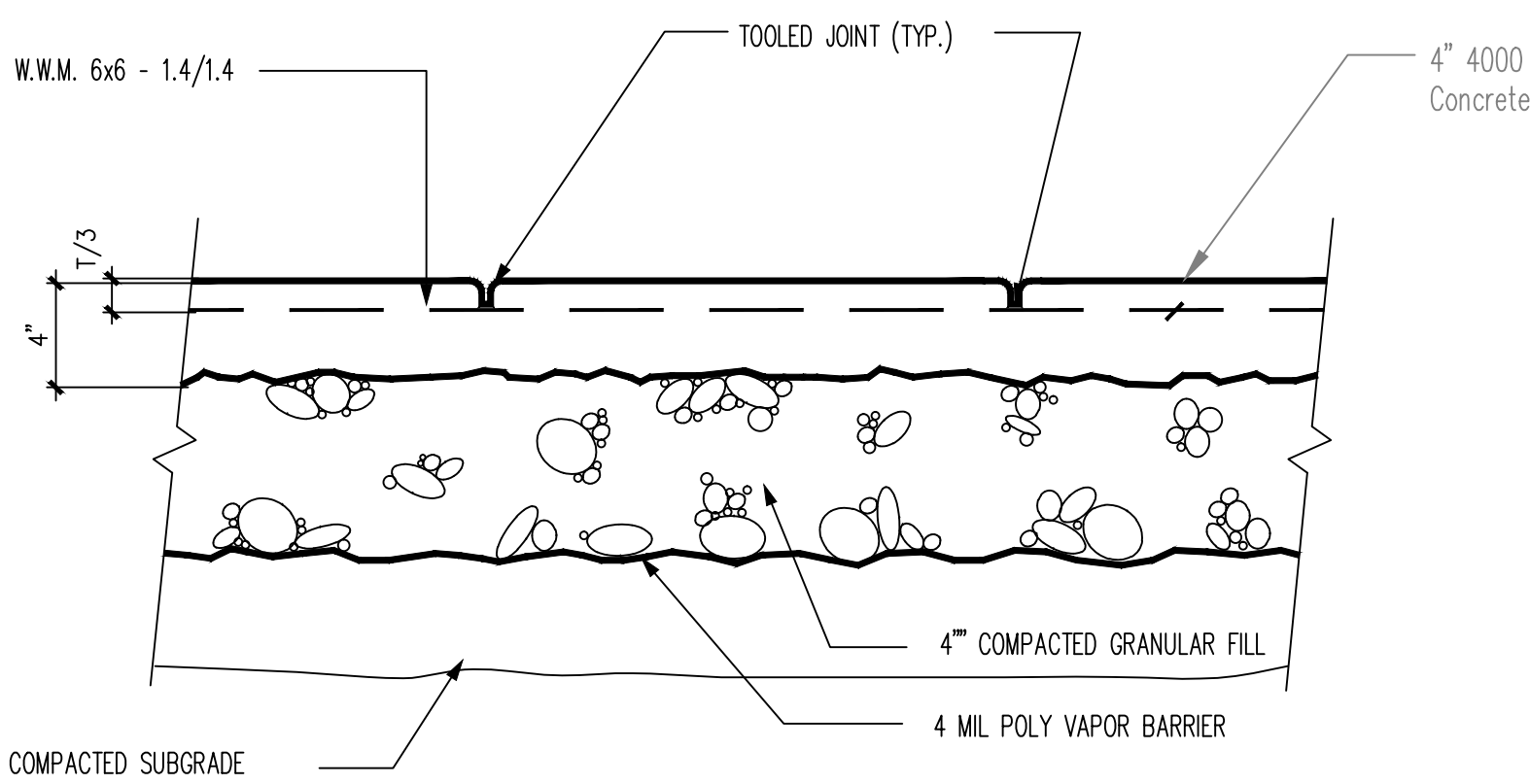


KEYED NOTES:

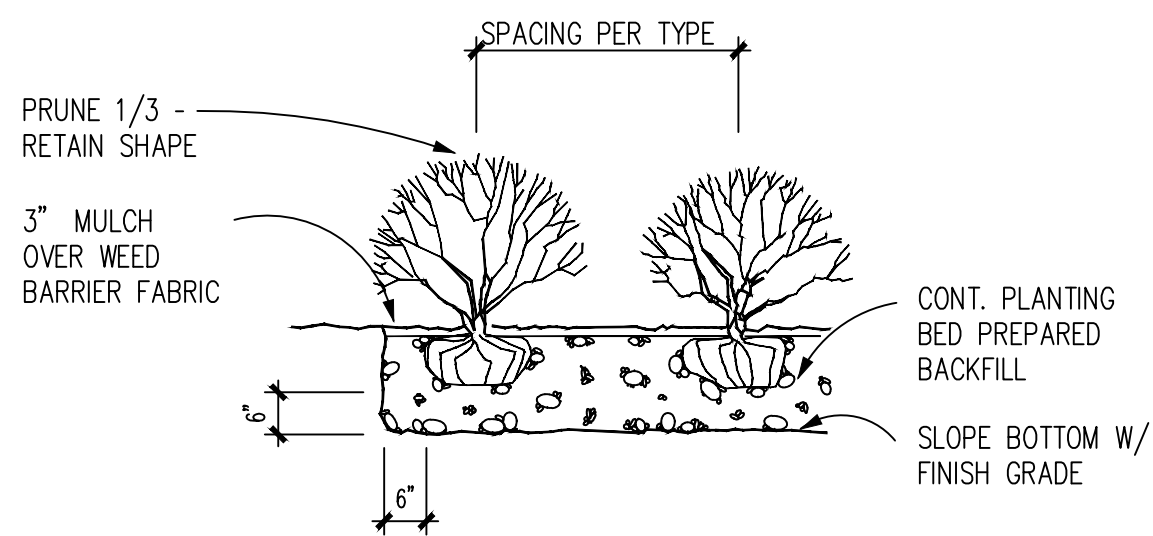
- 1 PROVIDE NEW ADA COMPLIANT 2" DIAMETER TUBULAR STEEL RAILING INSTALLED IN NEW SIDEWALK
- 2 ADJUST GRADE OF SITE SUCH THAT SIDEWALK IS INSTALLED LEVEL AND EVEN WITH EXISTING SIDEWALK ELEVATION, FILL AS INDICATED IN DETAIL 3 BELOW AND IN THE SPECIFICATION.
- 3 PROVIDE NEW PLANTING BED INCLUDING FILL, SOIL, MULCH AND PLANTS AS PER DRAWING DETAILS AND SPECIFICATIONS



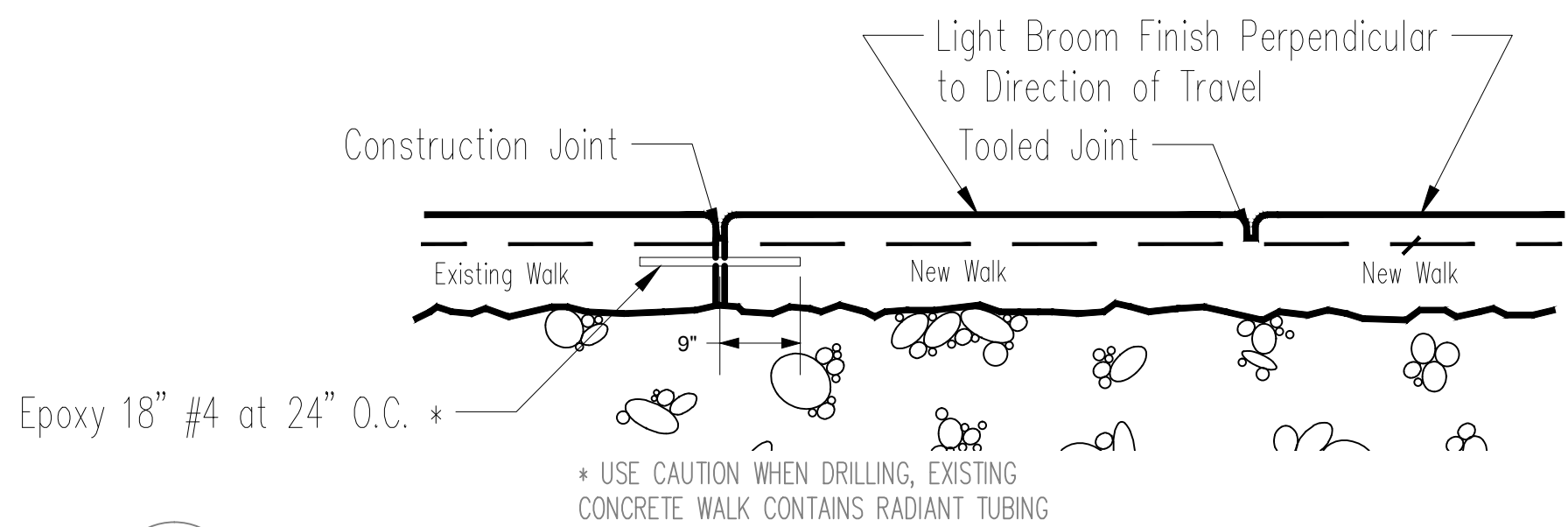
4 PLANTING AND SIDEWALK INTERFACE AND SLOPE
NTS



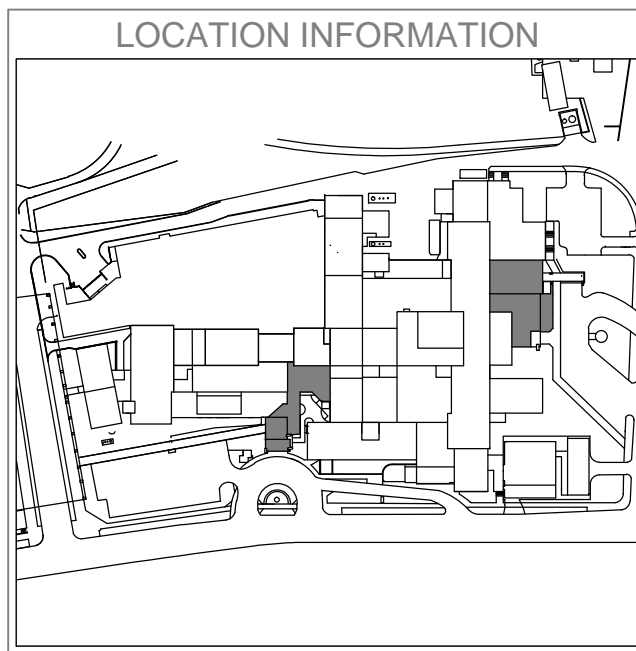
5 CONCRETE SIDEWALK DETAIL
NTS



6 SHRUB PLANTING DETAIL (TYP.)
NTS



7 CONCRETE SIDEWALK JOINTS
NTS



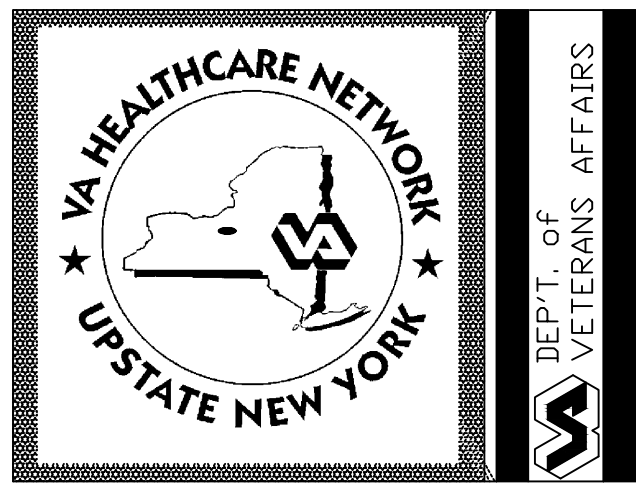
Revisions					Date

(Company Logo/Information Block)					

Drawing Title					
SITE PLAN AND DETAILS					
Approved: Facility Manager					

Project Title					
INSTALL REVOLVING DOORS AT MAIN ENTRANCES					
Building Number		Checked		Drawn	
1		MA		AWG	
Location					
VAMC SYRACUSE, NY					

Date					
12/1/2014					
Project No.					
528A7-13-754					
DRAWING NO.					
S-101					
Dwg.		8	Of	8	



1 2 3 4 5 6 7 8 9 10 11 12 13 14 15 16 17 18 19 20 21 22 23 24